

Nowell, Keith, Env. Health

From: Joshua Graber <jgrab@Langan.com>
Sent: Thursday, February 16, 2017 3:12 PM
To: Nowell, Keith, Env. Health
Subject: 260 30th Street
Attachments: 750635602 Figure 3 Site Plan with Chemical Concentrations R.pdf; 750635602 Figure 2 Site Plan.pdf

Joshua Graber, CHMM
Associate
Direct: 510.874.7086
Mobile: 415.254.8774
[File Sharing Link](#)

LANGAN

Phone: 510.874.7000 Fax: 510.874.7001
501 14th Street, 3rd Floor
Oakland, CA 94612-1420
www.langan.com

CALIFORNIA NEW JERSEY NEW YORK CONNECTICUT PENNSYLVANIA WASHINGTON, DC
VIRGINIA WEST VIRGINIA OHIO FLORIDA TEXAS ARIZONA
ABU DHABI ATHENS DOHA DUBAI ISTANBUL LONDON PANAMA






Langan's goal is to be SAFE (Stay Accident Free Everyday)

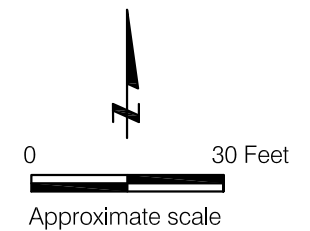
This message may contain confidential, proprietary, or privileged information. Confidentiality or privilege is not intended to be waived or lost by erroneous transmission of this message. If you receive this message in error, please notify the sender immediately by return email and delete this message from your system. Disclosure, use, distribution, or copying of a message or any of its attachments by anyone other than the intended recipient is strictly prohibited.

\\langan.com\data\OAK\data6\750635602\Cadd Data - 750635602\2D-DesignFiles\Environmental\750635602-N-SP0105.dwg 2/08/17



EXPLANATION

- B-18** ● Approximate location of environmental boring by Langan, February 2017
- B-13** ⊕ Approximate location of geotechnical boring by Langan, November 2016
- B-1** ● Approximate location of 5-foot boring by Langan Treadwell Rollo, April 2016
- B-3** ⊕ Approximate location of 20-foot boring by Langan Treadwell Rollo, April 2016
- B-5** ⊕ Approximate location of 15-foot boring by Langan Treadwell Rollo, April 2016
- B-7** ⊕ Approximate location of 10-foot boring by Langan Treadwell Rollo, April 2016
- B1** ⊕ Approximate location of boring by P&D Environmental, Inc., September 2014
- SB-1** ● Approximate location of boring by Faultline Associates, Inc., March 1997
-  Approximate location of abandoned in-place 1,000- gallon waste oil UST, March 1997
-  Approximate location of former USTs (350-gallon gasoline and 1,000-gallon diesel), removed in July 1992
-  Approximate location of floor drain
-  Approximate footprint of proposed 3000 Broadway Redevelopment
-  Approximate location of drain line piping



3000 BROADWAY REDEVELOPMENT		
260 30TH STREET		
Oakland, California		
SITE PLAN		
Date 02/08/17	Project No. 750635602	Figure 2
LANGAN		

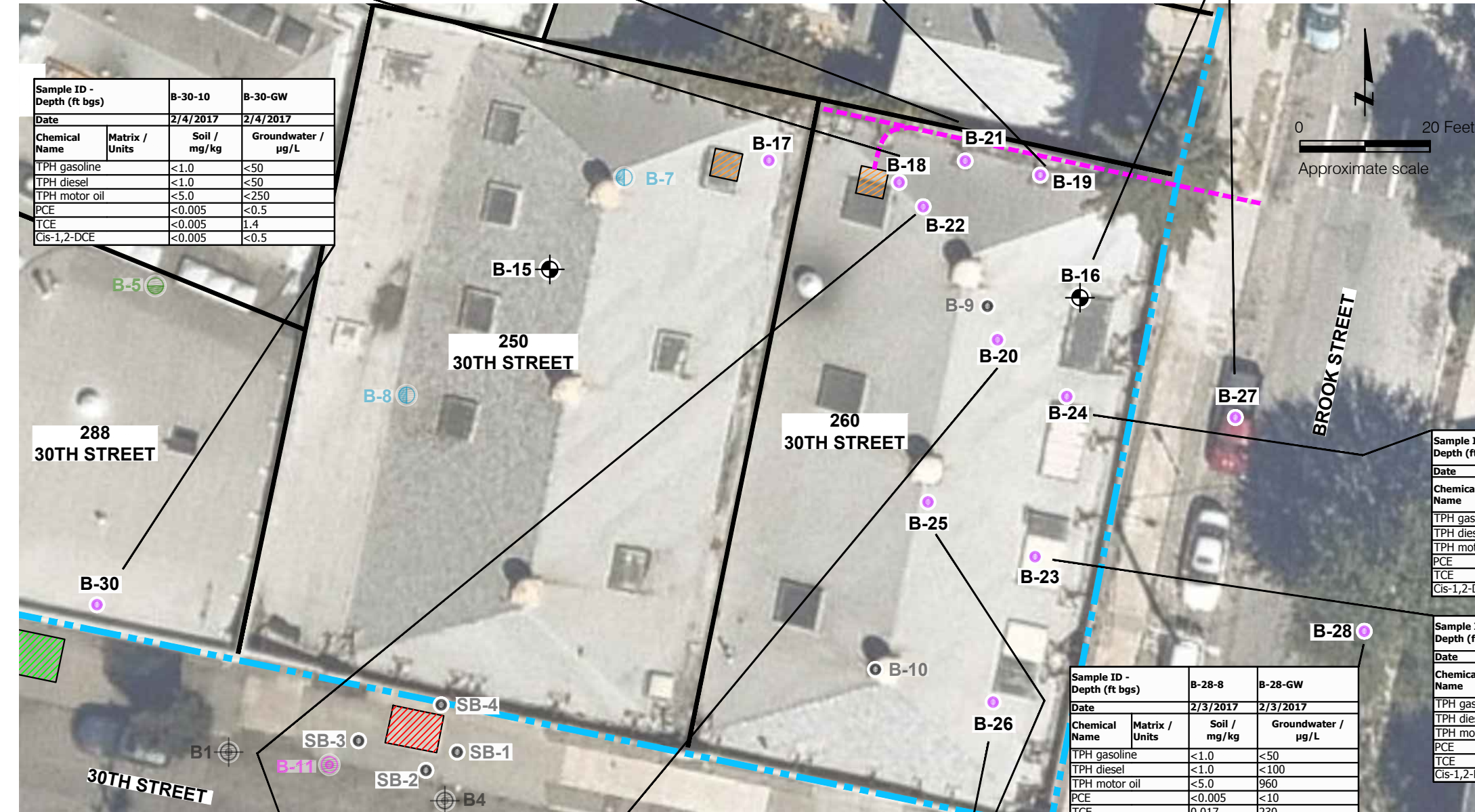
C:\Users\young\appdata\local\temp\AcPublish_7468\750635602-N-SP0106.dwg 2/14/17

Sample ID - Depth (ft bgs)				Sample ID - Depth (ft bgs)				Sample ID - Depth (ft bgs)				Sample ID - Depth (ft bgs)				Sample ID - Depth (ft bgs)					
B-18-10		B-18-GW		B-21-10		B-21-GW		B-19-10		B-19-GW		B-16-6		B-16-10		B-16-20.5		B-27-10		B-27-GW	
Date	Matrix / Units	Soil / mg/kg	Groundwater / µg/L	Date	Matrix / Units	Soil / mg/kg	Groundwater / µg/L	Date	Matrix / Units	Soil / mg/kg	Groundwater / µg/L	Date	Matrix / Units	Soil / mg/kg	Groundwater / µg/L	Date	Matrix / Units	Soil / mg/kg	Groundwater / µg/L		
2/2/2017				2/2/2017				2/1/2017				11/3/2016				11/3/2016			2/3/2017		
TPH gasoline	< 1.0	55		TPH gasoline	< 1.0	<50		TPH gasoline	< 1.0	<50		TPH gasoline	810	460	15	TPH gasoline		<1.0		<1.0	59
TPH diesel	< 1.0	200		TPH diesel	< 1.0	<100		TPH diesel	< 1.0	<100		TPH diesel	2,900	1,600	100	TPH diesel		<1.0		<1.0	<100
TPH motor oil	< 5.0	1,200		TPH motor oil	< 5.0	510		TPH motor oil	< 5.0	630		TPH motor oil	6,100	3,600	100	TPH motor oil		<5.0		<5.0	540
PCE	< 1.0	< 100		PCE	<0.025	<5.0		PCE	< 0.005	<1.2		PCE	2.0	0.059	0.013	PCE		<0.005		<0.005	<1.7
TCE	1.1	2,000		TCE	0.50	170		TCE	< 0.005	41		TCE	< 0.20	0.29	0.017	TCE		<0.005		<0.005	48
Cis-1,2-DCE	6.4	350		Cis-1,2-DCE	0.065	19		Cis-1,2-DCE	< 0.005	5		Cis-1,2-DCE	< 0.20	0.29	< 0.005	Cis-1,2-DCE		<0.005		<0.005	4.8

Sample ID - Depth (ft bgs)			
B-30-10		B-30-GW	
Date	Matrix / Units	Soil / mg/kg	Groundwater / µg/L
2/4/2017			
TPH gasoline	<1.0	<50	
TPH diesel	<1.0	<50	
TPH motor oil	<5.0	<250	
PCE	<0.005	<0.5	
TCE	<0.005	1.4	
Cis-1,2-DCE	<0.005	<0.5	

Sample ID - Depth (ft bgs)									
B-24-8		B-24-10		B-24-15		B-24-20		B-24-GW	
Date	Matrix / Units	Soil / mg/kg	Groundwater / µg/L	Date	Matrix / Units	Soil / mg/kg	Groundwater / µg/L		
2/1/2017				2/1/2017				2/1/2017	
TPH gasoline	< 1.0	12	< 1.0	< 1.0	< 1.0	1,400			
TPH diesel	< 1.0	70	< 1.0	< 1.0	250,000				
TPH motor oil	< 5.0	180	< 5.0	< 5.0	500,000				
PCE	<0.005	<0.005	<0.005	<0.005	<50				
TCE	<0.005	0.010	0.047	0.030	590				
Cis-1,2-DCE	<0.005	0.012	0.14	<0.005	1,600				

Sample ID - Depth (ft bgs)							
B-23-10		B-23-12.5		B-23-16		B-23-GW	
Date	Matrix / Units	Soil / mg/kg	Groundwater / µg/L	Date	Matrix / Units	Soil / mg/kg	Groundwater / µg/L
2/2/2017				2/2/2017			
TPH gasoline	<1.0	20	<1.0	250			
TPH diesel	<1.0	8.1	<1.0	40,000			
TPH motor oil	<5.0	25	<5.0	110,000			
PCE	<0.005	<0.005	<0.005	<12			
TCE	<0.005	<0.005	<0.005	470			
Cis-1,2-DCE	<0.005	<0.005	<0.005	210			



- EXPLANATION**
- B-18 ● Approximate location of environmental boring by Langan, February 2017
 - B-13 ⊕ Approximate location of geotechnical boring by Langan, November 2016
 - B-1 ● Approximate location of 5-foot boring by Langan Treadwell Rollo, April 2016
 - B-11 ⊕ Approximate location of 20-foot boring by Langan Treadwell Rollo, April 2016
 - B-5 ⊕ Approximate location of 15-foot boring by Langan Treadwell Rollo, April 2016
 - B-7 ⊕ Approximate location of 10-foot boring by Langan Treadwell Rollo, April 2016
 - B1 ⊕ Approximate location of boring by P&D Environmental, Inc., September 2014
 - SB-1 ● Approximate location of boring by Faultline Associates, Inc., March 1997
 - ▨ Approximate location of abandoned in-place 1,000-gallon waste oil UST, March 1997
 - ▨ Approximate location of former USTs (350-gallon gasoline and 1,000-gallon diesel), removed in July 1992
 - ▨ Approximate location of floor drain
 - Approximate footprint of proposed 3000 Broadway Redevelopment
 - - - Approximate location of drain line piping

Sample ID - Depth (ft bgs)			
B-22-10		B-22-GW	
Date	Matrix / Units	Soil / mg/kg	Groundwater / µg/L
2/1/2017			
TPH gasoline	< 1.0	120	
TPH diesel	< 1.0	<100	
TPH motor oil	< 5.0	680	
PCE	<0.33	<120	
TCE	5.0	6,100	
Cis-1,2-DCE	0.81	2,200	

Sample ID - Depth (ft bgs)			
B-20-10		B-20-GW	
Date	Matrix / Units	Soil / mg/kg	Groundwater / µg/L
2/1/2017			
TPH gasoline	< 1.0	75	
TPH diesel	< 1.0	2,400	
TPH motor oil	< 5.0	8,600	
PCE	< 0.01	<120	
TCE	0.21	4,700	
Cis-1,2-DCE	0.011	460	

Sample ID - Depth (ft bgs)							
B-26-10		B-26-15		B-26-GW			
Date	Matrix / Units	Soil / mg/kg	Groundwater / µg/L	Date	Matrix / Units	Soil / mg/kg	Groundwater / µg/L
2/2/2017				2/3/2017			
TPH gasoline	170	<1.0	110				
TPH diesel	1,500	<1.0	770				
TPH motor oil	2,800	<5.0	1,300				
PCE	<0.10	<0.005	<2.5				
TCE	<0.10	<0.005	63				
Cis-1,2-DCE	<0.10	<0.005	20				

Sample ID - Depth (ft bgs)			
B-28-8		B-28-GW	
Date	Matrix / Units	Soil / mg/kg	Groundwater / µg/L
2/3/2017			
TPH gasoline	<1.0	<50	
TPH diesel	<1.0	<100	
TPH motor oil	<5.0	960	
PCE	<0.005	<10	
TCE	0.017	230	
Cis-1,2-DCE	<0.005	37	

Sample ID - Depth (ft bgs)							
B-25-10		B-25-15.5		B-25-20		B-25-GW	
Date	Matrix / Units	Soil / mg/kg	Groundwater / µg/L	Date	Matrix / Units	Soil / mg/kg	Groundwater / µg/L
2/2/2017				2/2/2017			
TPH gasoline	18	3	<1.0	66			
TPH diesel	33	42	<1.0	5,100			
TPH motor oil	150	170	<5.0	18,000			
PCE	<0.005	<0.005	<0.005	<5.0			
TCE	0.011	0.0074	0.0075	210			
Cis-1,2-DCE	<0.005	<0.005	<0.005	29			

**3000 BROADWAY REDEVELOPMENT
260 30TH STREET
Oakland, California**

**SITE PLAN WITH
CHEMICAL CONCENTRATIONS**

Date 02/08/17 | Project No. 750635602 | Figure 3

LANGAN