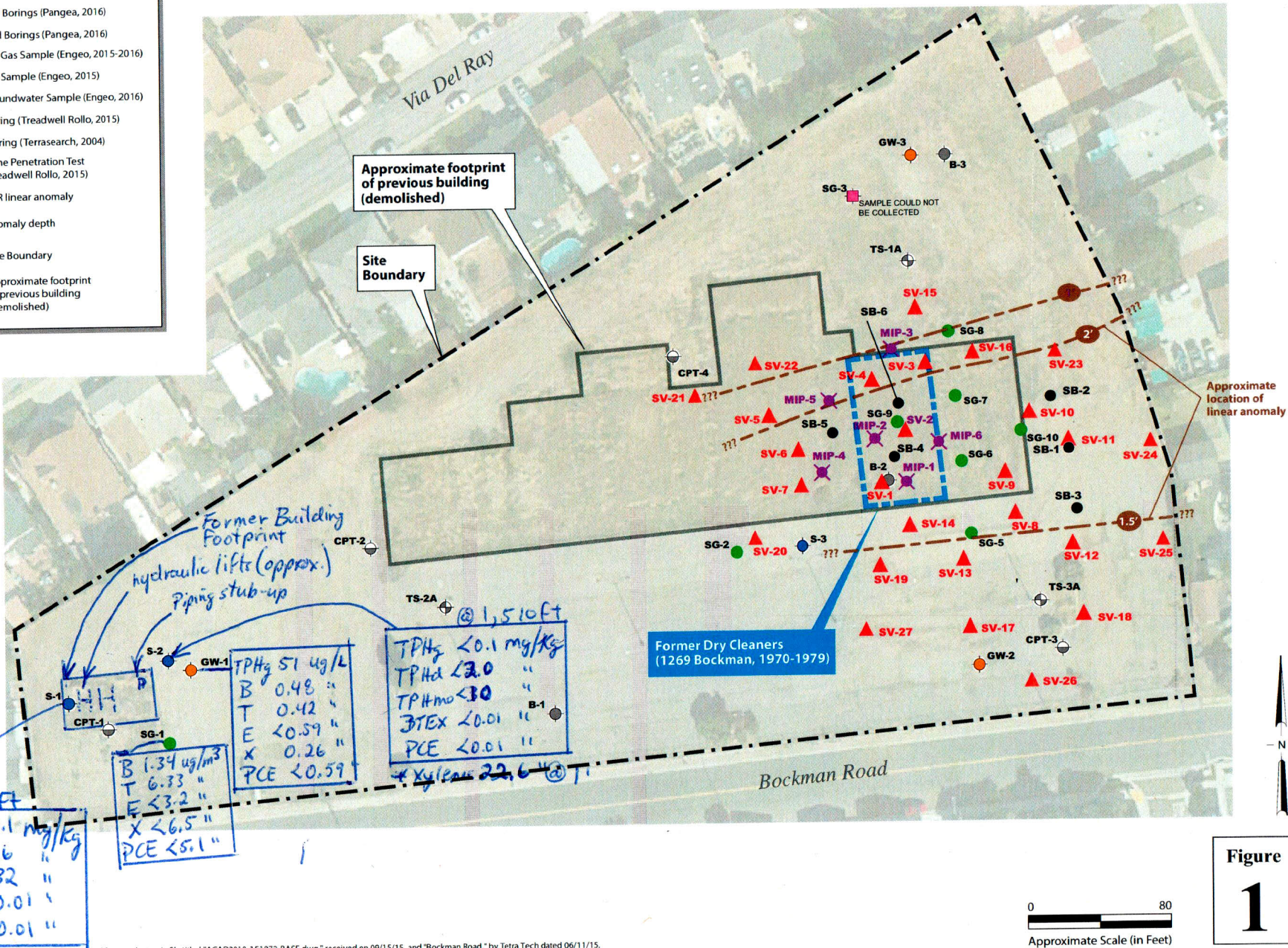


LEGEND

- SV-1 ▲ Soil Vapor Probe (Pangea, 2016)
- MIP-1 ✖ MIP Borings (Pangea, 2016)
- SB-1 ● Soil Borings (Pangea, 2016)
- SG-5 ● Soil Gas Sample (Engeo, 2015-2016)
- S-3 ● Soil Sample (Engeo, 2015)
- GW-3 ● Groundwater Sample (Engeo, 2016)
- B-3 ● Boring (Treadwell Rollo, 2015)
- TS-3A ● Boring (TerraSearch, 2004)
- CPT-4 ● Cone Penetration Test (Treadwell Rollo, 2015)
- - - GPR linear anomaly
- ②' Anomaly depth
- [---] Site Boundary
- [---] Approximate footprint of previous building (demolished)



Map courtesy of ENGEO Incorporated. Base map derived from a electronic file titled "ACAD2010-151072-BASE.dwg" received on 09/15/15, and "Bockman Road," by Tetra Tech dated 06/11/15.
 * ND @ 5, 10 ft bgs

1233 Bockman Road
 San Lorenzo, California



Figure
1

Site Map