

BASE MAP SOURCE: GOOGLE EARTH MAPPING SERVICE



VICINITY MAP
 BOCKMAN ROAD PROPERTY
 SAN LORENZO, CALIFORNIA

PROJECT NO.: 12181.000.000

SCALE: AS SHOWN

DRAWN BY: LL

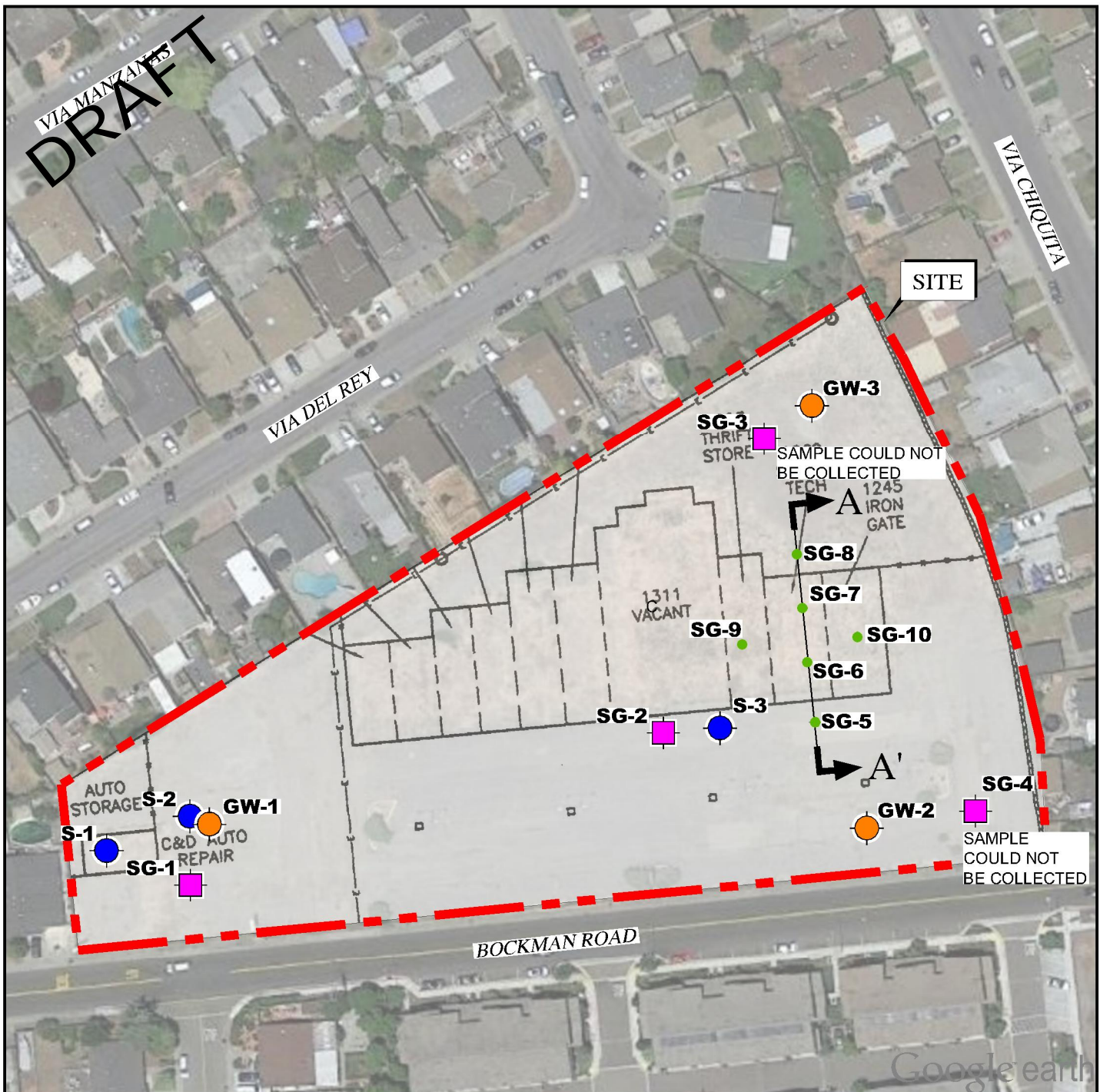
CHECKED BY: SM

FIGURE NO.

1

COPYRIGHT © 2016 BY ENGEO INCORPORATED. THIS DOCUMENT MAY NOT BE REPRODUCED IN WHOLE OR IN PART BY ANY MEANS WHATSOEVER, NOR MAY IT BE QUOTED OR EXCERPTED WITHOUT THE EXPRESS WRITTEN CONSENT OF ENGEO INCORPORATED.

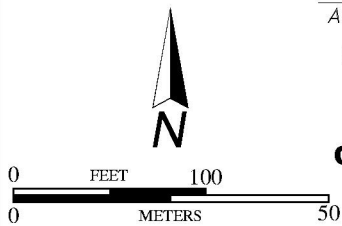
VIA MANAYAS
DRAFT



EXPLANATION

ALL LOCATIONS ARE APPROXIMATE

- SG-10** SOIL GAS SAMPLE (ENGEO, 2016)
 - S-3** SOIL SAMPLE (ENGEO, 2015)
 - GW-3** GROUNDWATER SAMPLE (ENGEO, 2015)
 - SG-4** SOIL GAS SAMPLE (ENGEO, 2015)
- A** **A'** CROSS SECTION



BASE MAP SOURCE: GOOGLE EARTH MAPPING SERVICE AND SECOR, 2004



SITE PLAN
BOCKMAN ROAD PROPERTY
SAN LORENZO, CALIFORNIA

PROJECT NO.: 12181.000.000

FIGURE NO.

SCALE: AS SHOWN

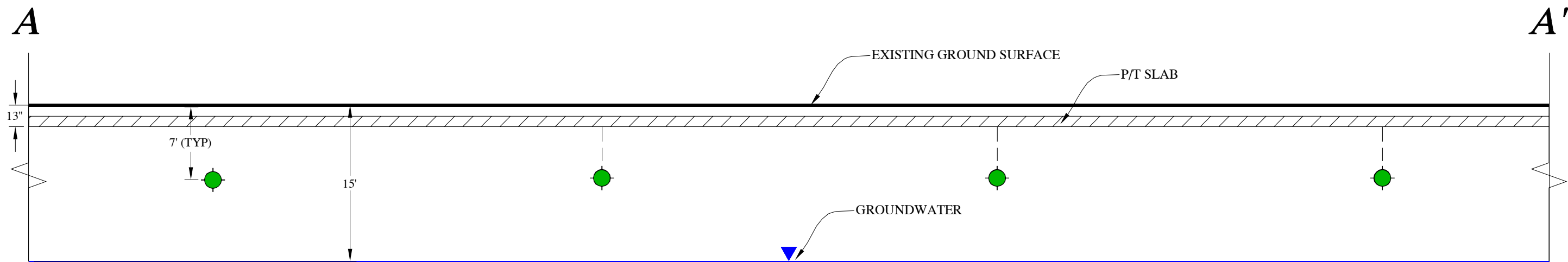
DRAWN BY: LL

CHECKED BY: SM

2

COPYRIGHT © 2016 BY ENGeo INCORPORATED. THIS DOCUMENT MAY NOT BE REPRODUCED IN WHOLE OR IN PART BY ANY MEANS WHATSOEVER, NOR MAY IT BE QUOTED OR EXCERPTED WITHOUT THE EXPRESS WRITTEN CONSENT OF ENGeo INCORPORATED.

DRAFT



EXPLANATION

ALL LOCATIONS ARE APPROXIMATE

 PROPOSED SOIL GAS SAMPLE



CROSS SECTION A-A'
BOCKMAN ROAD PROPERTY
SAN LORENZO, CALIFORNIA

PROJECT NO.: 12181.000.000
SCALE: NO SCALE
DRAWN BY: LL CHECKED BY: SM

FIGURE NO.
3

Table A - Summary of Soil Gas Analytical Results

Sample ID	Date	Depth	1,1-Difluoroethane	1,3-Butadiene	2-Butanone (MEK)	4-Methyl-2-Pentanone (MIBK)	Acetone	Benzene	Carbon Disulfide	Hexane	Tetrachloroethylene (PCE)	Toluene	Ethyl Benzene	m,p-Xylene	o-Xylene	Styrene
			µg/m ³	µg/m ³	µg/m ³	µg/m ³	µg/m ³	µg/m ³	µg/m ³	µg/m ³	µg/m ³	µg/m ³	µg/m ³	µg/m ³	µg/m ³	µg/m ³
RWQCB ESL¹			-	-	5.20E+06	-	3.20E+07	97	-	-	480	3.10E+05	1,100	1.00E+05	1.00E+05	9.40E+05
SG-10 @ 10'	6/24/2016	10	<1.0	2.24	99.8	<1.7	54.1	61.8	34.4	261	<1.8	76.2	<2.0	6.97	<1.6	<1.4
SG-5 @ 10'	6/24/2016	10	<13	<12	<17	<23	46.0	<19	144	<14	<24	<26	<27	<44	<22	<19
SG-6 @ 7'	6/24/2016	7	<1.4	<1.1	<1.5	<2.1	34.0	<1.6	<3.1	<1.8	256	4.14	143	NR	260	<2.2
SG-7 @ 10'	6/24/2016	10	3.42	7.79	23.3	<2.0	10.6	21.9	56.8	184	24.4	20.9	<4.9	<9.9	<4.9	<5.1
SG-8 @ 7'	6/24/2016	7	<1.4	6.14	5.82	9.59	<19	9.18	58.6	20.4	16.7	19.1	232	890	282	5.98
SG-9 @ 7'	6/24/2016	7	<1.4	4.33	<1.5	<2.1	<19	3.84	43.6	6.13	256	9.96	<2.2	4.69	<2.2	<2.2

Notes

- means ESL does not exist.

<13 indicates result is less than the laboratory reporting limit of 13 µg/m³.

¹ Regional Water Quality Control Board, Environmental Screening Levels - Indoor Air Direct Exposure Human Health Risk Screening Levels (Table IA-1), with an attenuation factor of 0.001 for future residential building, February 2016.