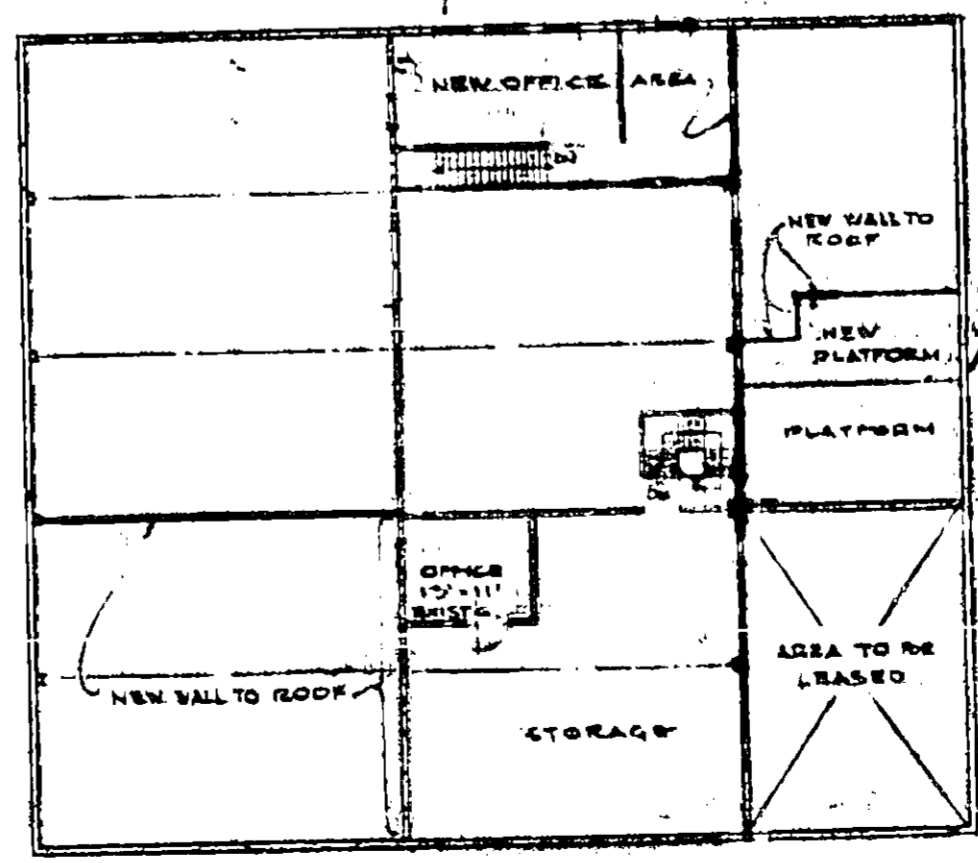


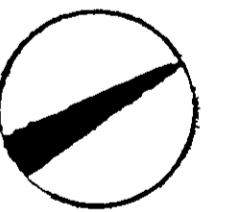
BRUSH ST.

SECOND ST.



NOTE: IN ADDITION TO SPECIFICATIONS DIVISION 2, SECT. 2.2.1, CONTRACTOR SHALL REMOVE EXISTING CURB & GUTTER (EAVES) ON FORMER 2ND STREET AND REGRADE AND CONSTRUCT AREA B TO GRADES SHOWN ON THIS SHEET AND ALSO INSTALL TEMPORARY DRIVEWAY RAMPS MARKED THUS

0.00 - EXISTING GRADE
 0.00 - NEW GRADE



REFERENCE PLANS

FIELD BOOKS 110

NOTE: ELEVATIONS SHOWN ARE CITY OF OAKLAND DATUM; ADD 6.20 TO OBTAIN PORT OF OAKLAND DATUM

NO.	REVISIONS	DATE

PORT OF OAKLAND
 OAKLAND, CALIFORNIA

DEMOLITION, ALTERATION, CONSTRUCTION OF BUILDINGS FOR CORPORATION YARD

SITE PLAN

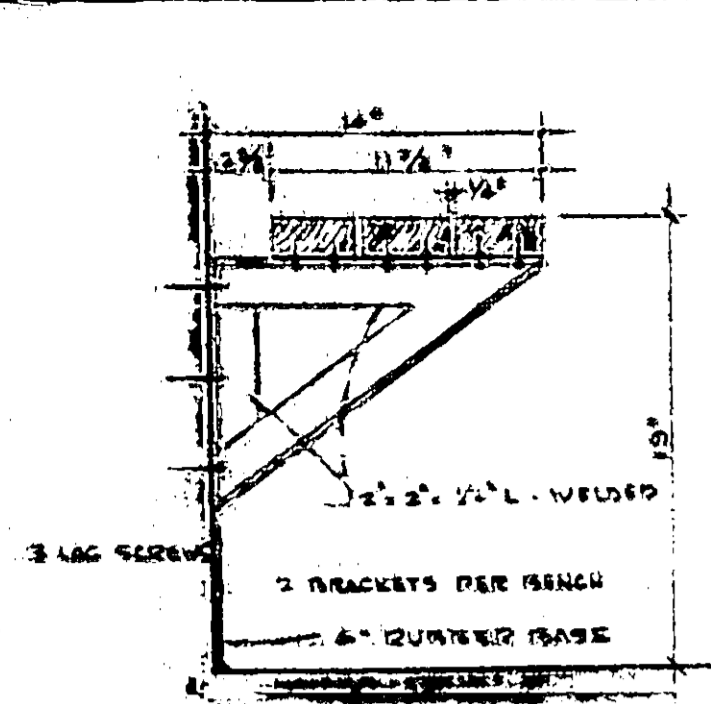
DATE 12-2-1970 FILE AA 1275 SHEET A1 OF 6 SHEETS

SCALE 1/8" = 20'-0"

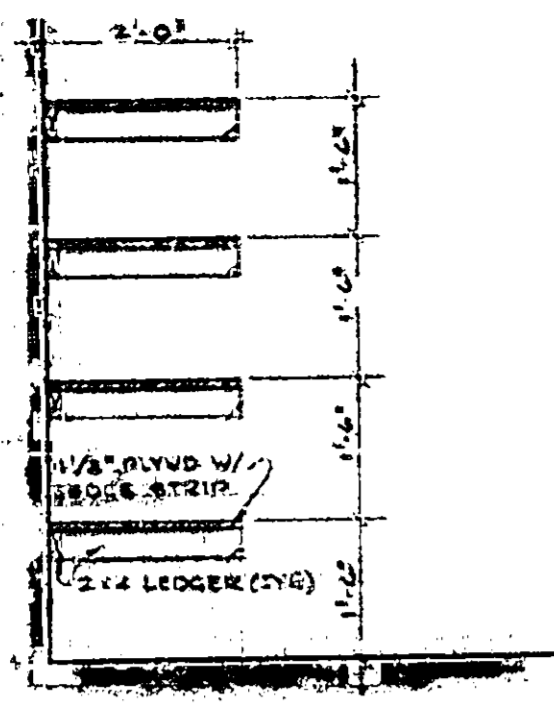
DRAWN *[Signature]*
 CHECKED *[Signature]*
 RECOMMENDED *[Signature]*
 APPROVED *[Signature]* ASST. CHIEF ENGINEER

CHIEF ENGINEER *[Signature]*

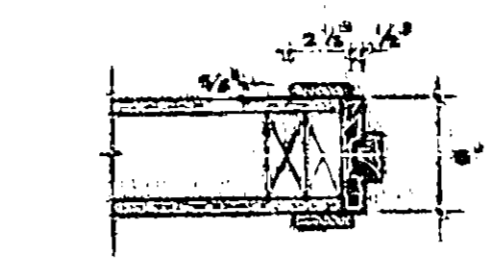
VENTILATION SHAFT WEST BOUNDARY LINE OF SOUTHERN RAY TOLL CROSSING



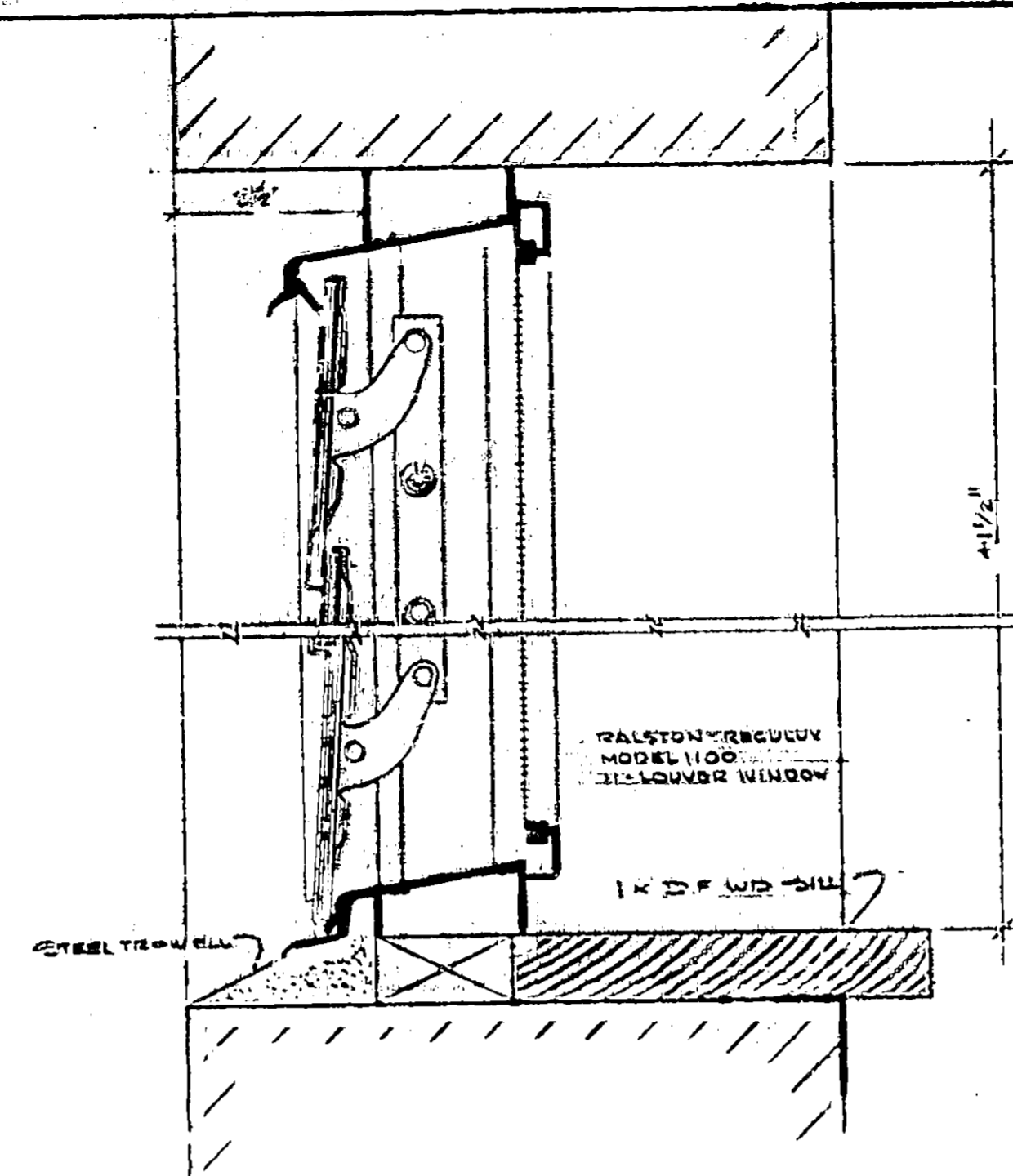
1 SECTION THRU BENCH RM 10
SCALE: 1/2" = 1'-0"



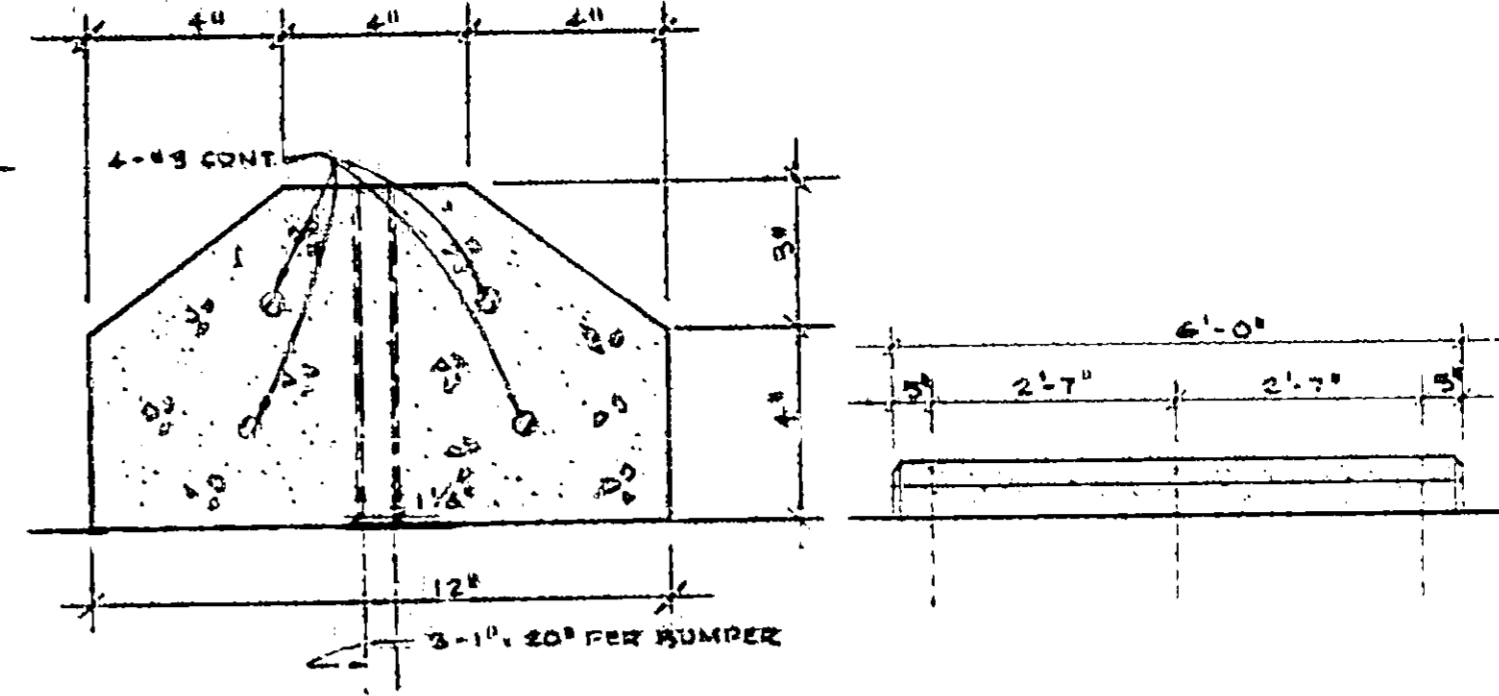
6 SECTION THRU SHELVING RM 23
SCALE: 1/2" = 1'-0"



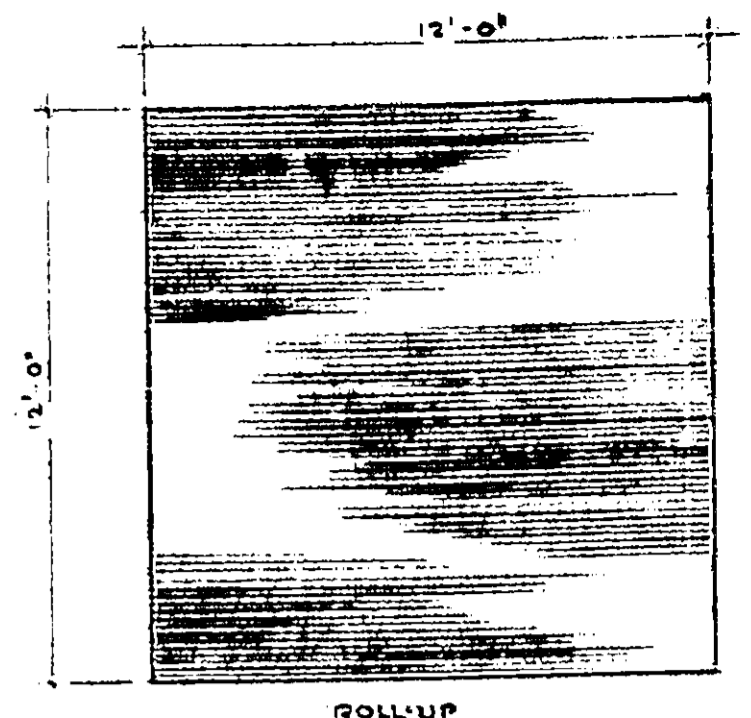
8 DOOR JAMB
SCALE: 1/2" = 1'-0"



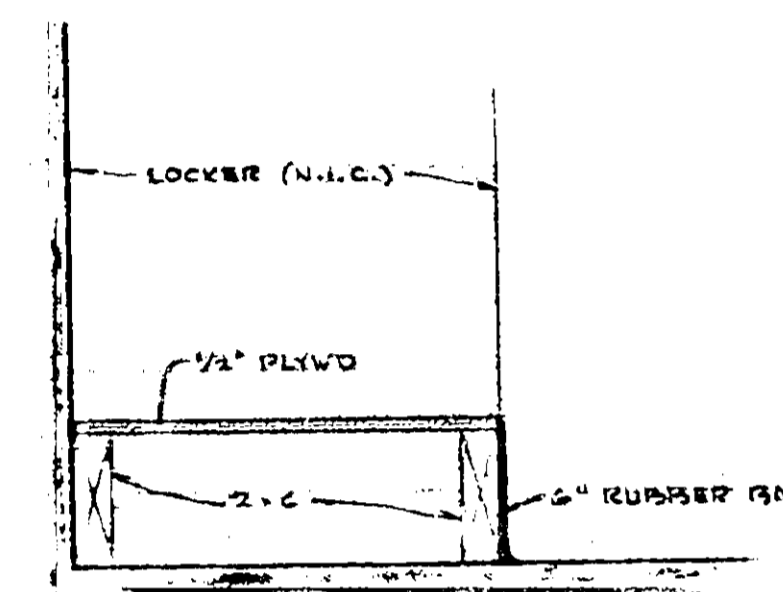
12 SECTION THRU HEAD & SILL
SCALE: HALF SIZE



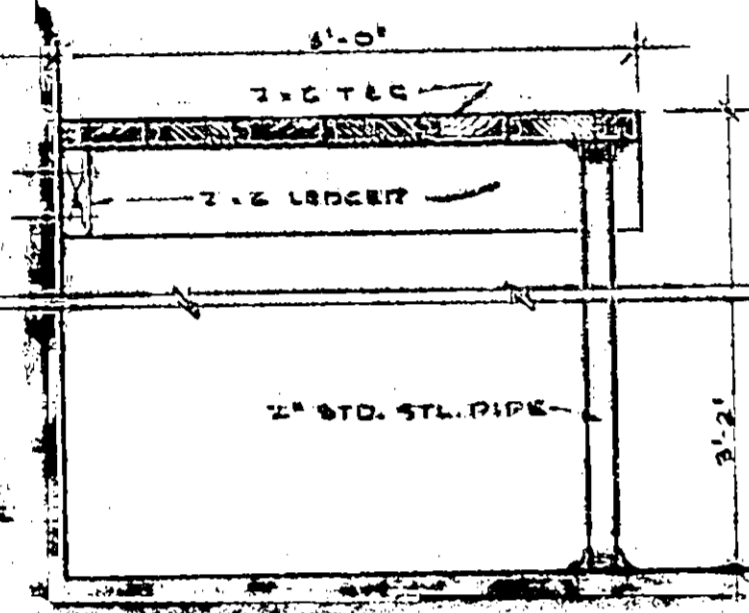
19 SECTION - TRUCK BUMPER
SCALE: 3/4" = 1'-0"



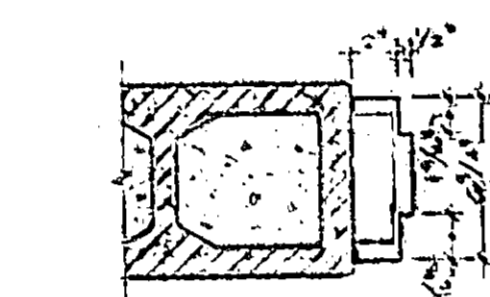
ELEVATION
SCALE: 1/2" = 1'-0"



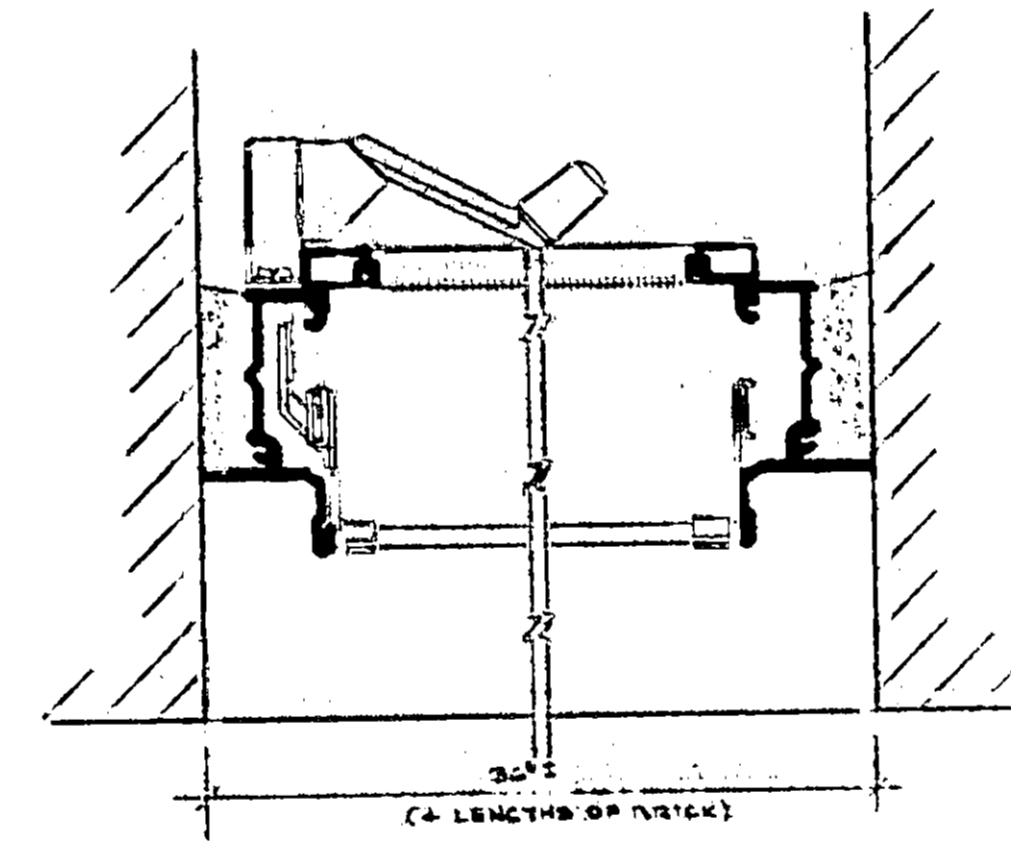
2 SECTION OF LOCKER BASE RM 5
SCALE: 1/2" = 1'-0"



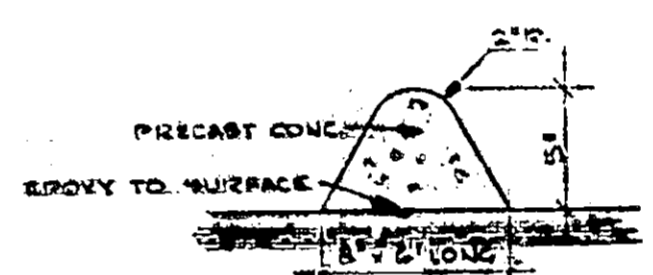
7 SECTION THRU WORK BENCH IN RM 16
SCALE: 1/2" = 1'-0"



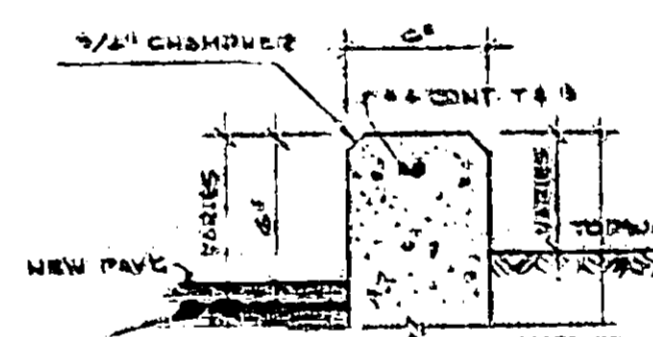
9 DOOR JAMB
SCALE: 1/2" = 1'-0"



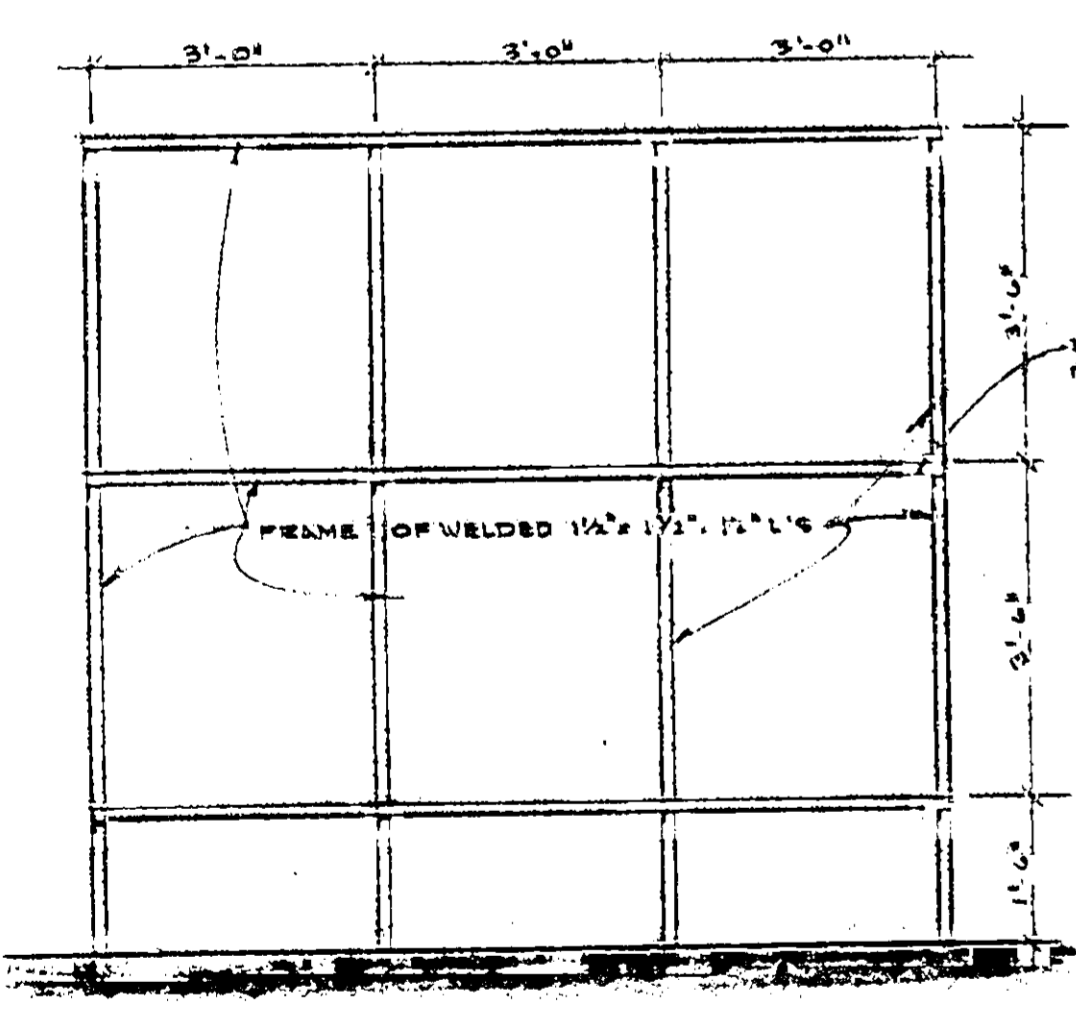
13 SECTION
SCALE: HALF SIZE



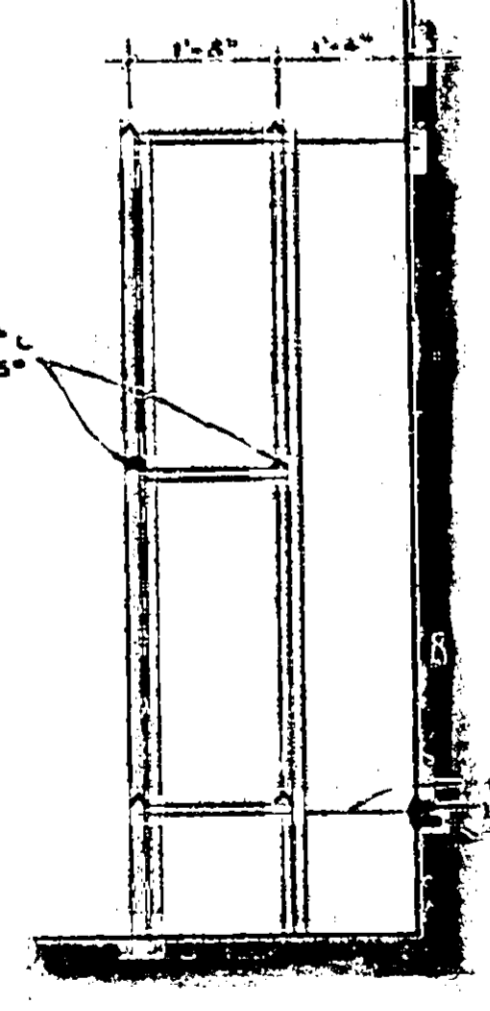
16 SECTION
SCALE: 1/2" = 1'-0"



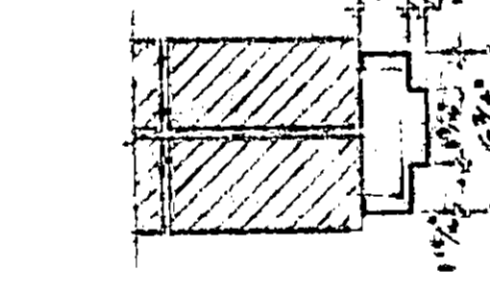
17 SECTION
SCALE: 1/2" = 1'-0"



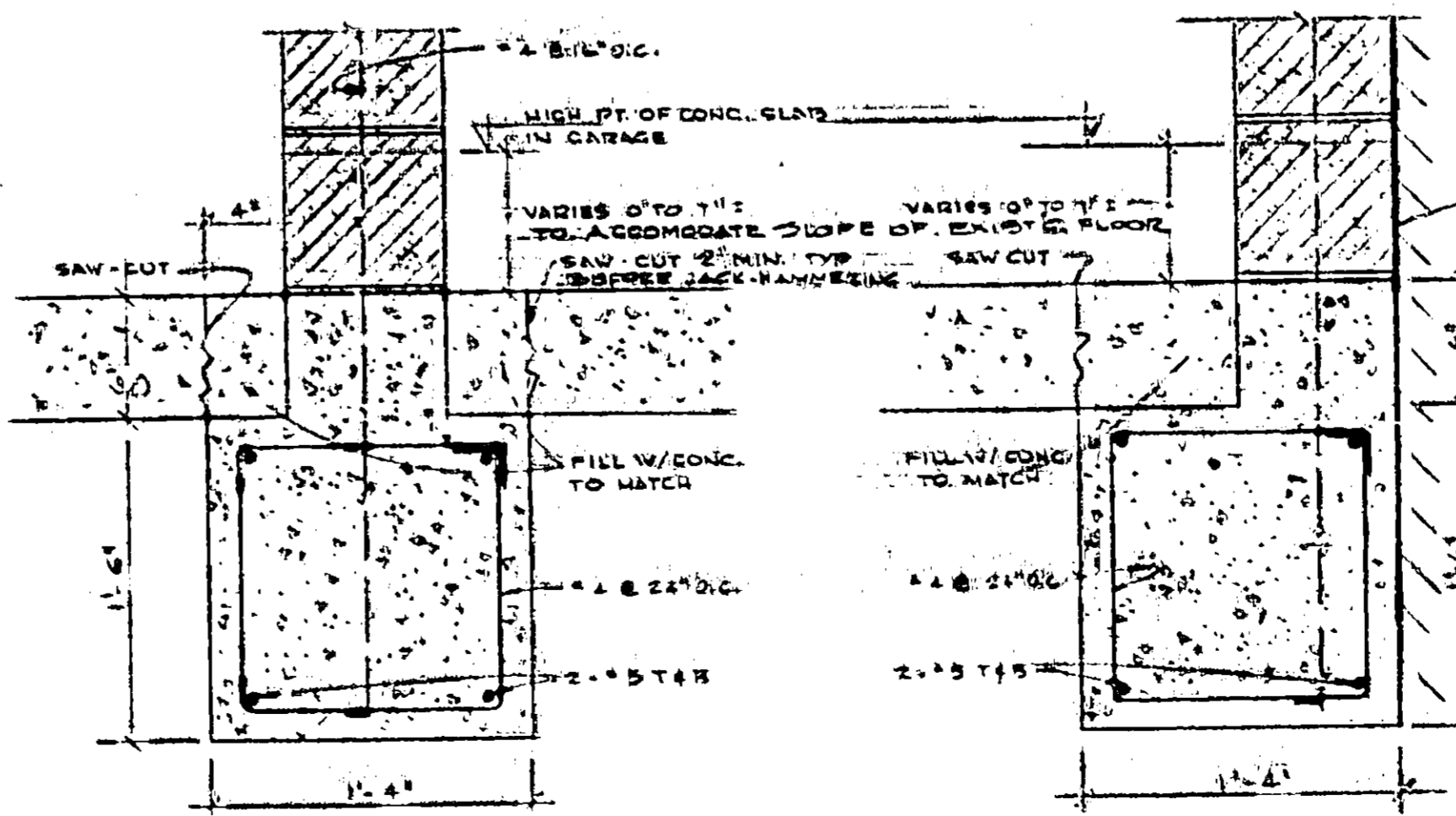
3 SECTION THRU TIRE RACK IN RM 21
SCALE: 1/2" = 1'-0"



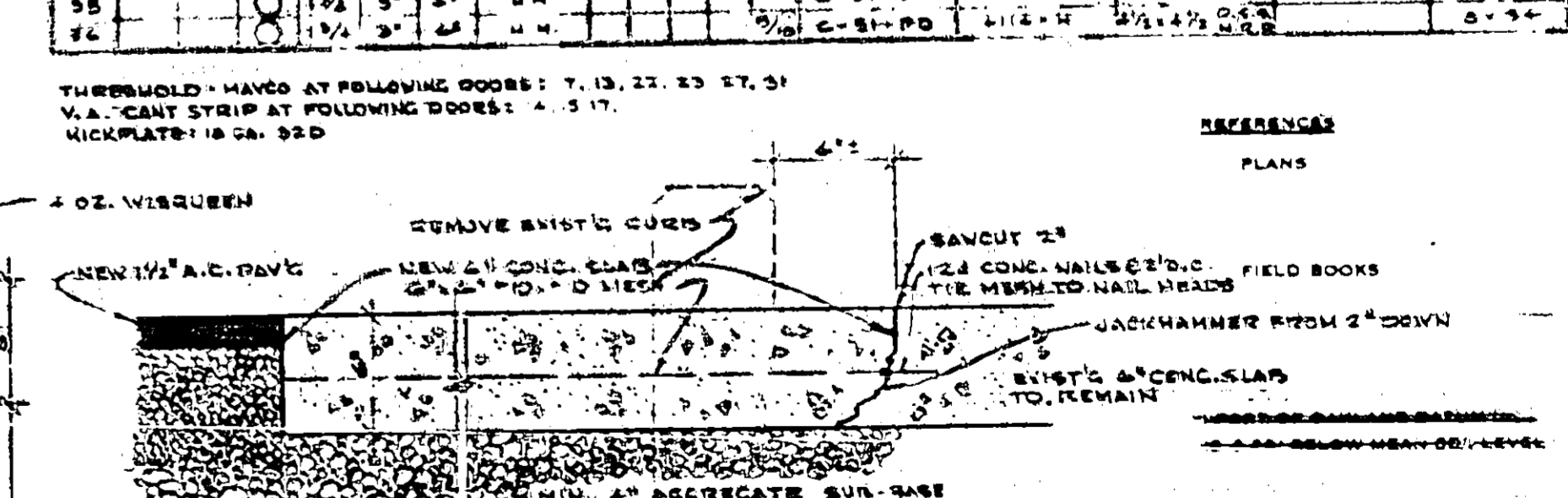
5 SECTION
SCALE: 1/2" = 1'-0"



10 DOOR JAMB
SCALE: 1/2" = 1'-0"



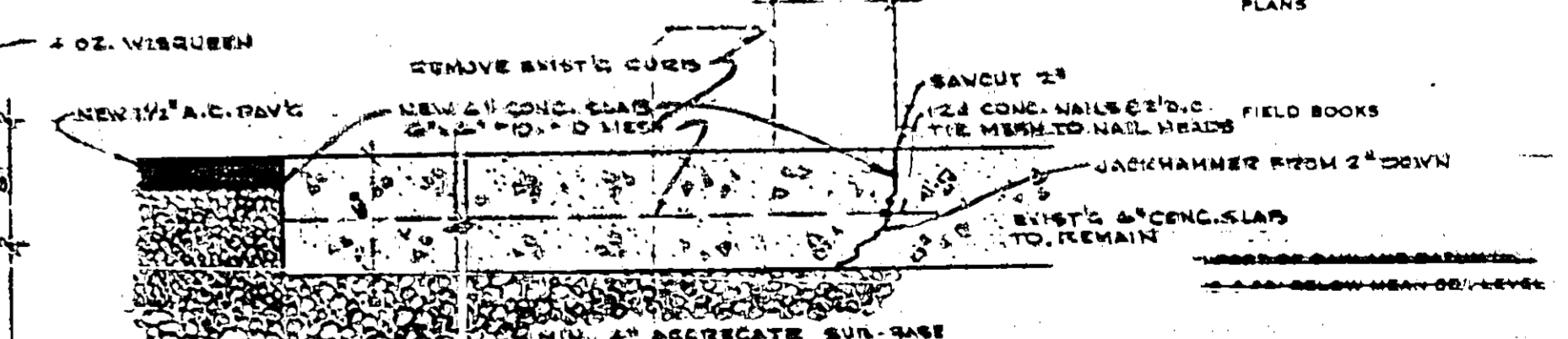
14 FOUNDATION DETAIL
SCALE: 1/2" = 1'-0"



15 FOUNDATION DETAIL
SCALE: 1/2" = 1'-0"

DOOR SCHEDULE										HARDWARE		
NO.	DESCRIPTION	NO.	TH.	W.	H.	TYPE	FIN.	LOCKSET	DOOR GL.	OUTSTIKERS	DOOR STOP	KICK PLATE
1	1 1/2" x 1 1/2" x 1 1/2" U.P.											
2	1 1/2" x 1 1/2" x 1 1/2" U.P.											
3	1 1/2" x 1 1/2" x 1 1/2" U.P.											
4	1 1/2" x 1 1/2" x 1 1/2" U.P.											
5	1 1/2" x 1 1/2" x 1 1/2" U.P.											
6	1 1/2" x 1 1/2" x 1 1/2" U.P.											
7	1 1/2" x 1 1/2" x 1 1/2" U.P.											
8	1 1/2" x 1 1/2" x 1 1/2" U.P.											
9	1 1/2" x 1 1/2" x 1 1/2" U.P.											
10	1 1/2" x 1 1/2" x 1 1/2" U.P.											
11	1 1/2" x 1 1/2" x 1 1/2" U.P.											
12	1 1/2" x 1 1/2" x 1 1/2" U.P.											
13	1 1/2" x 1 1/2" x 1 1/2" U.P.											
14	1 1/2" x 1 1/2" x 1 1/2" U.P.											
15	1 1/2" x 1 1/2" x 1 1/2" U.P.											
16	1 1/2" x 1 1/2" x 1 1/2" U.P.											
17	1 1/2" x 1 1/2" x 1 1/2" U.P.											
18	1 1/2" x 1 1/2" x 1 1/2" U.P.											
19	1 1/2" x 1 1/2" x 1 1/2" U.P.											
20	1 1/2" x 1 1/2" x 1 1/2" U.P.											
21	1 1/2" x 1 1/2" x 1 1/2" U.P.											
22	1 1/2" x 1 1/2" x 1 1/2" U.P.											
23	1 1/2" x 1 1/2" x 1 1/2" U.P.											
24	1 1/2" x 1 1/2" x 1 1/2" U.P.											
25	1 1/2" x 1 1/2" x 1 1/2" U.P.											
26	1 1/2" x 1 1/2" x 1 1/2" U.P.											
27	1 1/2" x 1 1/2" x 1 1/2" U.P.											
28	1 1/2" x 1 1/2" x 1 1/2" U.P.											
29	1 1/2" x 1 1/2" x 1 1/2" U.P.											
30	1 1/2" x 1 1/2" x 1 1/2" U.P.											
31	1 1/2" x 1 1/2" x 1 1/2" U.P.											
32	1 1/2" x 1 1/2" x 1 1/2" U.P.											
33	1 1/2" x 1 1/2" x 1 1/2" U.P.											
34	1 1/2" x 1 1/2" x 1 1/2" U.P.											
35	1 1/2" x 1 1/2" x 1 1/2" U.P.											
36	1 1/2" x 1 1/2" x 1 1/2" U.P.											
37	1 1/2" x 1 1/2" x 1 1/2" U.P.											
38	1 1/2" x 1 1/2" x 1 1/2" U.P.											
39	1 1/2" x 1 1/2" x 1 1/2" U.P.											
40	1 1/2" x 1 1/2" x 1 1/2" U.P.											
41	1 1/2" x 1 1/2" x 1 1/2" U.P.											
42	1 1/2" x 1 1/2" x 1 1/2" U.P.											
43	1 1/2" x 1 1/2" x 1 1/2" U.P.											
44	1 1/2" x 1 1/2" x 1 1/2" U.P.											
45	1 1/2" x 1 1/2" x 1 1/2" U.P.											
46	1 1/2" x 1 1/2" x 1 1/2" U.P.											
47	1 1/2" x 1 1/2" x 1 1/2" U.P.											
48	1 1/2" x 1 1/2" x 1 1/2" U.P.											
49	1 1/2" x 1 1/2" x 1 1/2" U.P.											
50	1 1/2" x 1 1/2" x 1 1/2" U.P.											

THRESHOLD - HANG AT FOLLOWING DOORS: 7, 13, 27, 37, 39
V.A. CANT STRIP AT FOLLOWING DOORS: 4, 5, 17
KICKPLATE: 18 GA. 320



REFERENCES
PLANS

REMOVE EXISTING CURBS
NEW 1 1/2" x 1 1/2" x 1 1/2" U.P.
NEW 2" CONC. SLAB
2" CONC. NAILS @ 12" O.C. FIELD BARS
TIE MESH TO NAIL HEADS
JACKHAMMER FROM 2" DOWN
EXISTING CONC. SLAB TO REMAIN

MIN. 2" AGGREGATE SUR-FACE

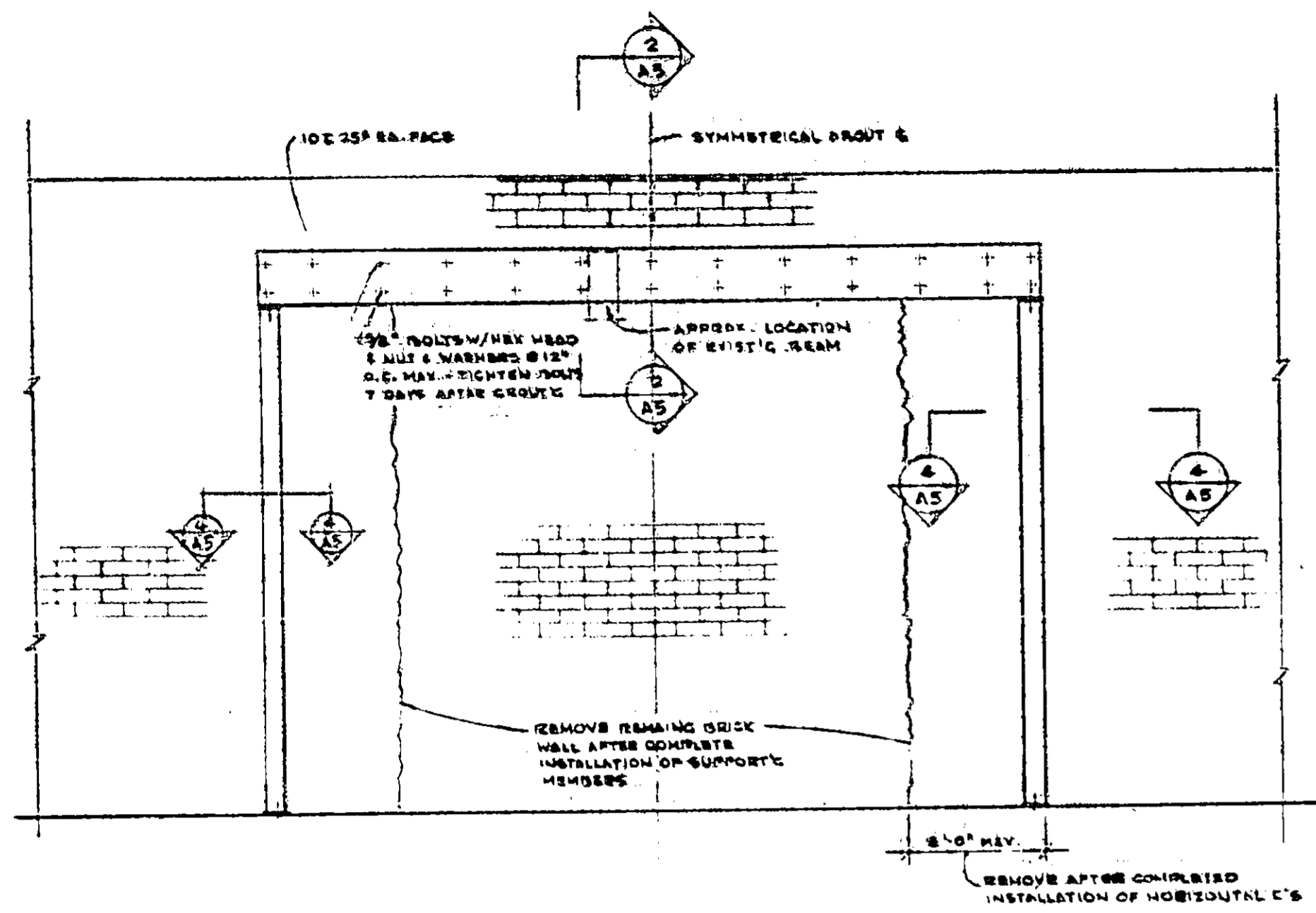
NO.	REVISIONS	DATE

PORT OF OAKLAND
OAKLAND, CALIFORNIA
DEMOLITION, ALTERATION, CONSTRUCTION
OF BUILDINGS FOR
CORPORATION YARD
DETAILS AND DOOR SCHEDULE & TYPES

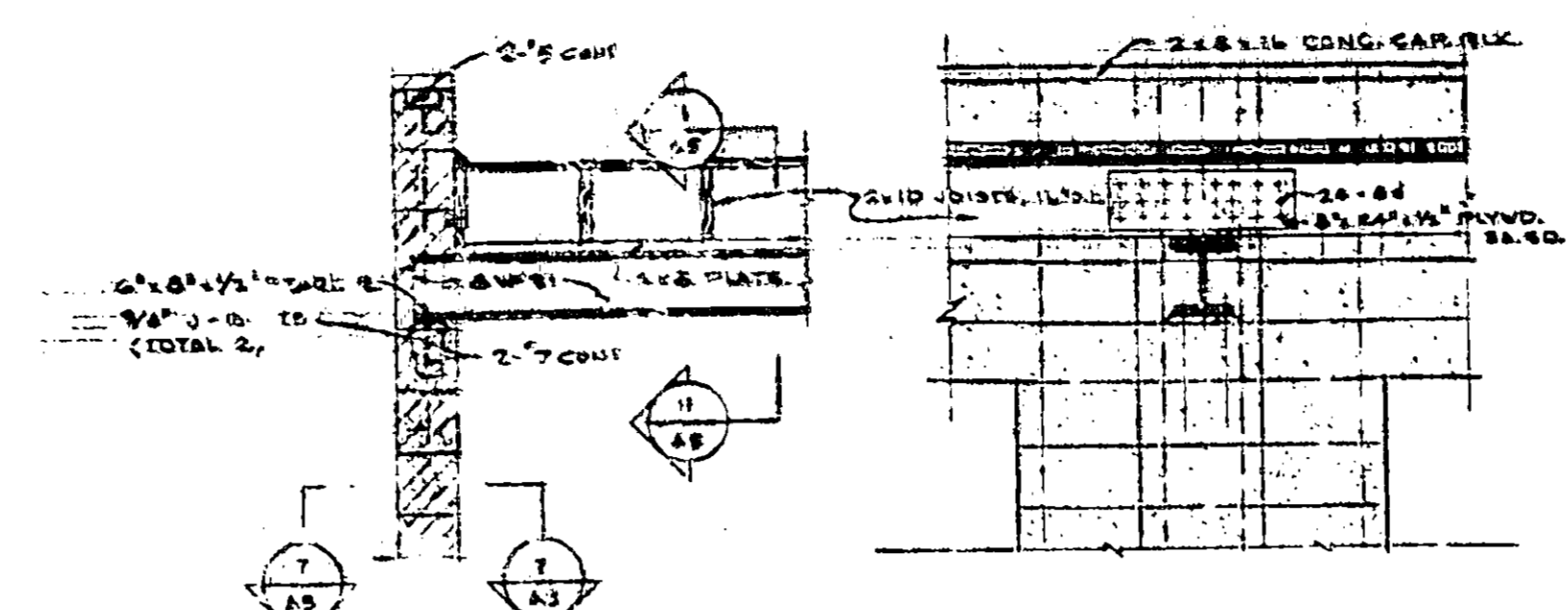
CHIEF ENGINEER

DATE 12-2-70
SCALE AS NOTED

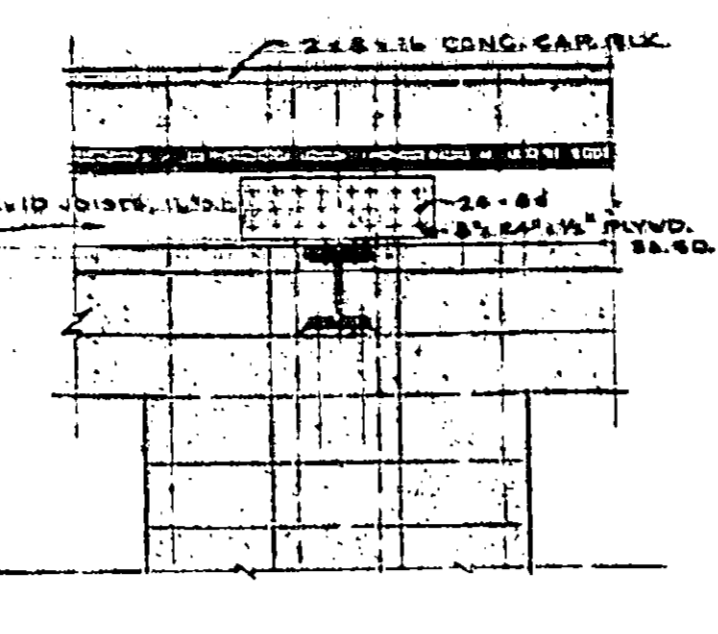
FILE AA 275
SHEET 8



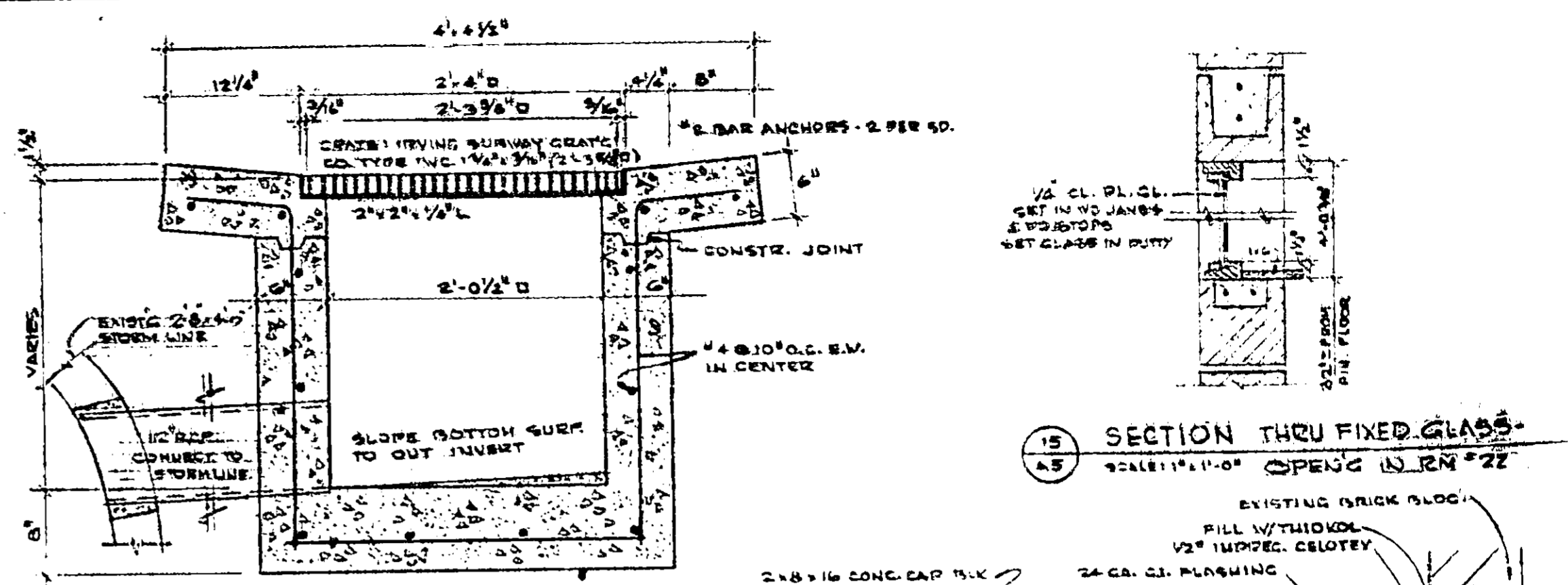
1 ELEVATION
SCALE: 1/2" = 1'-0"



7 SECTION
SCALE: 1/2" = 1'-0"

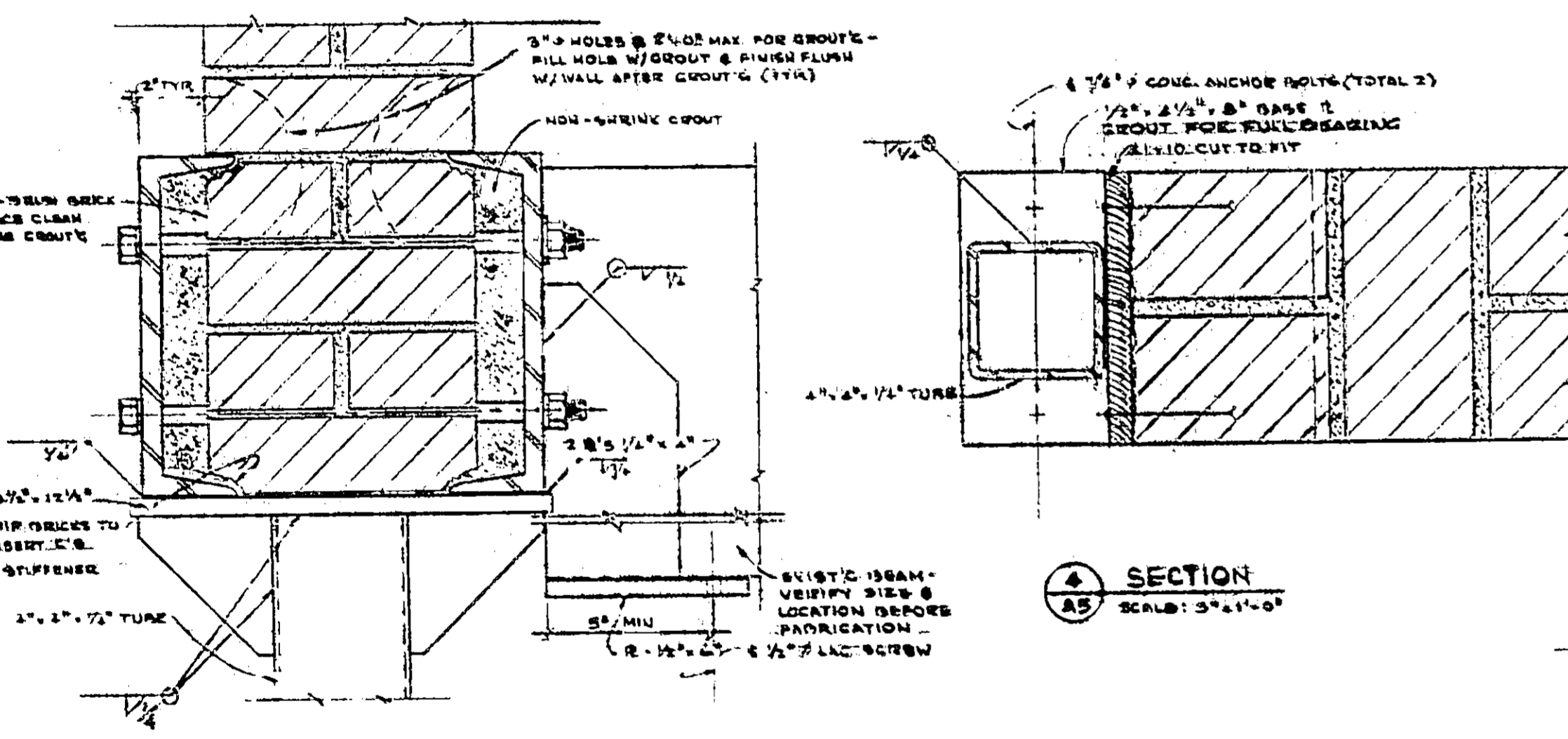


11 SECTION
SCALE: 1/2" = 1'-0"

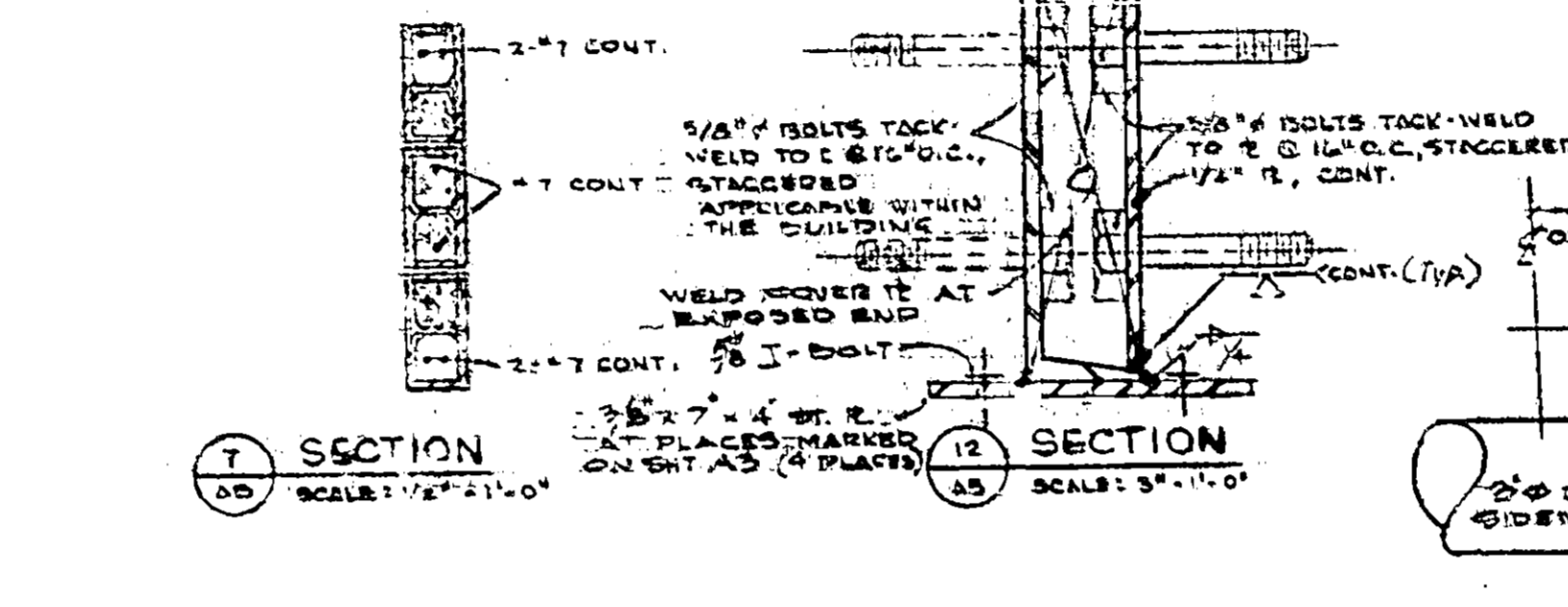


13 SECTION THRU CATCH BASIN
SCALE: 1/2" = 1'-0"

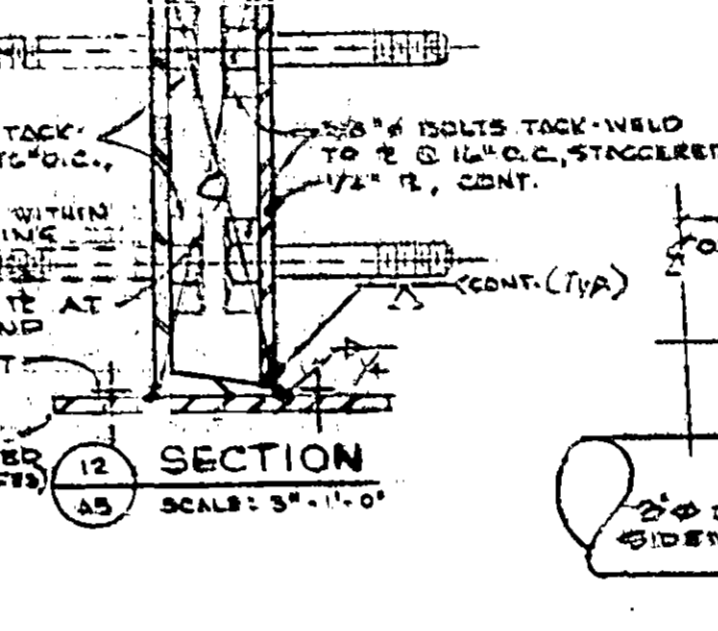
15 SECTION THRU FIXED GLASS
SCALE: 1/2" = 1'-0"



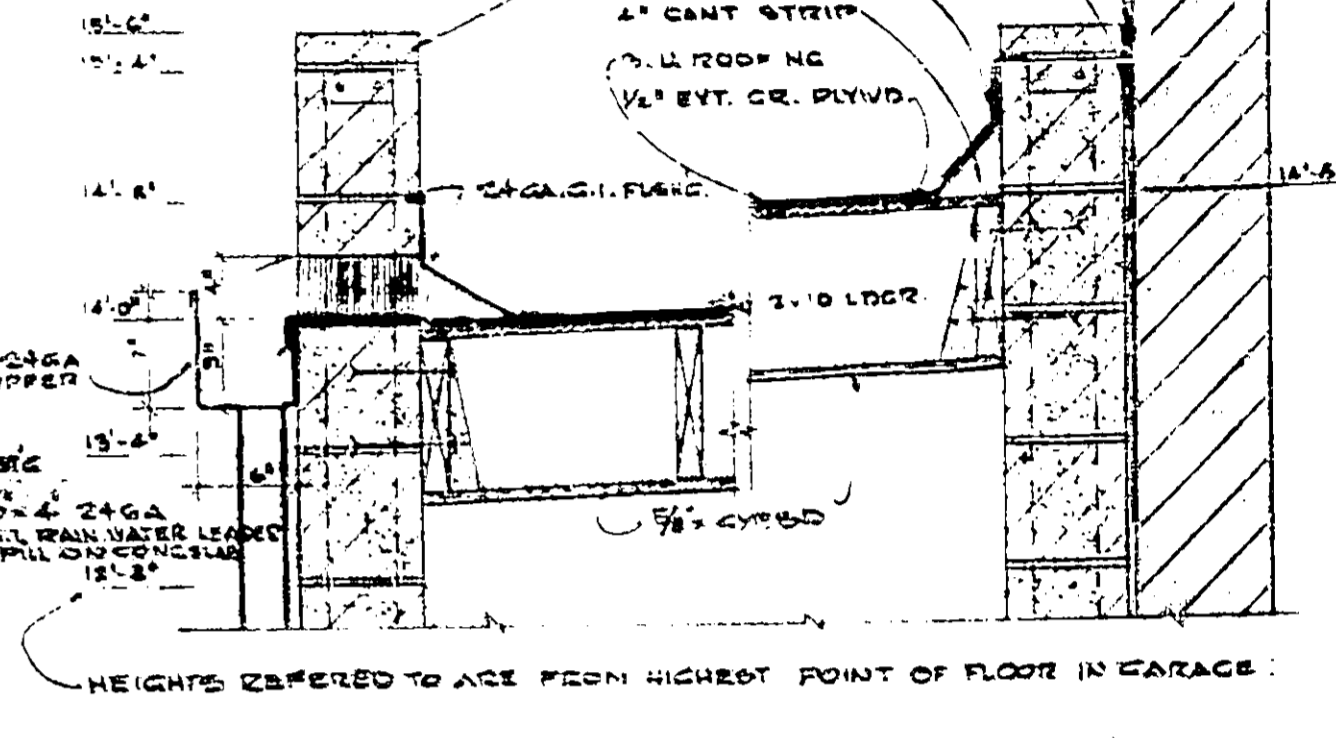
2 SECTION
SCALE: 3/4" = 1'-0"



12 SECTION
SCALE: 1/2" = 1'-0"

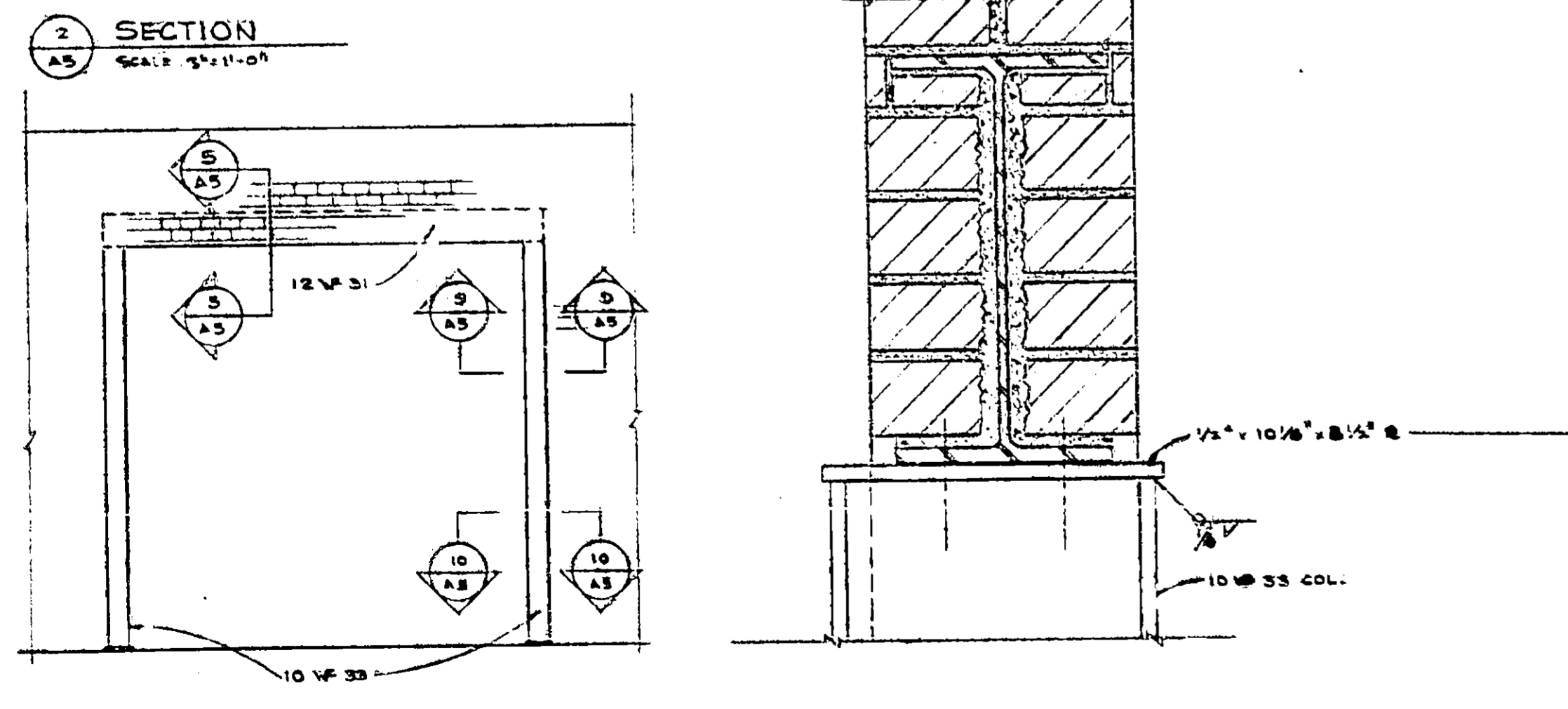


14 SECTION THRU DRIVEWAY
SCALE: 3/4" = 1'-0"

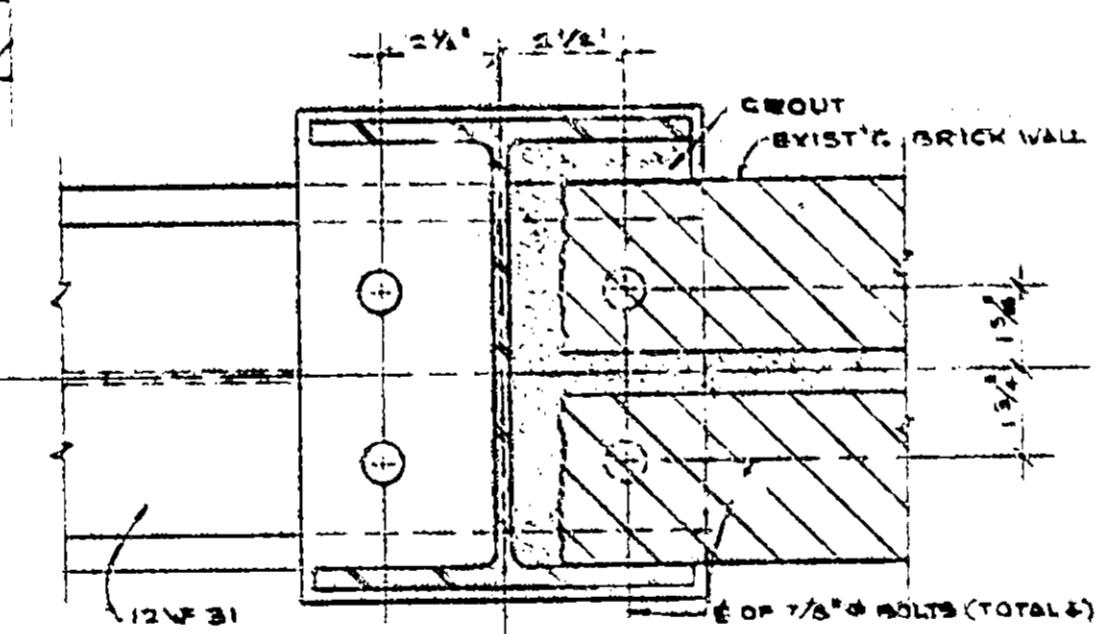


16 SECTION
SCALE: 1" = 1'-0"

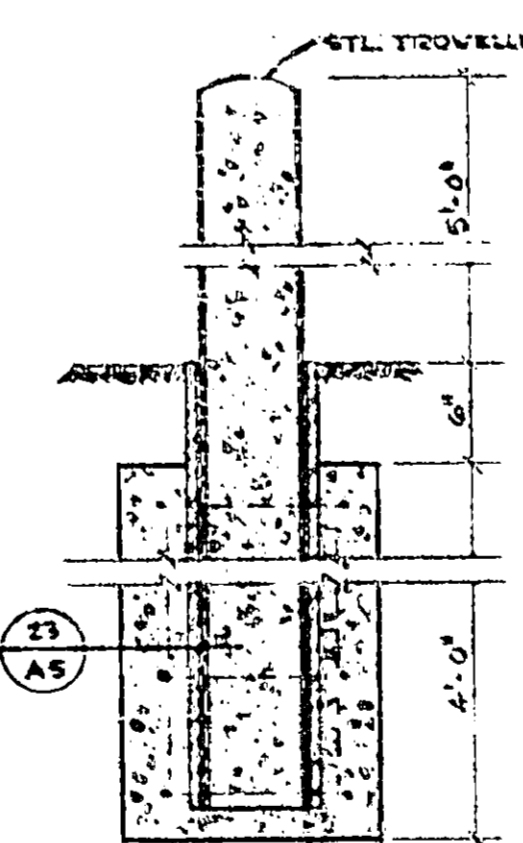
17 SECTION
SCALE: 1" = 1'-0"



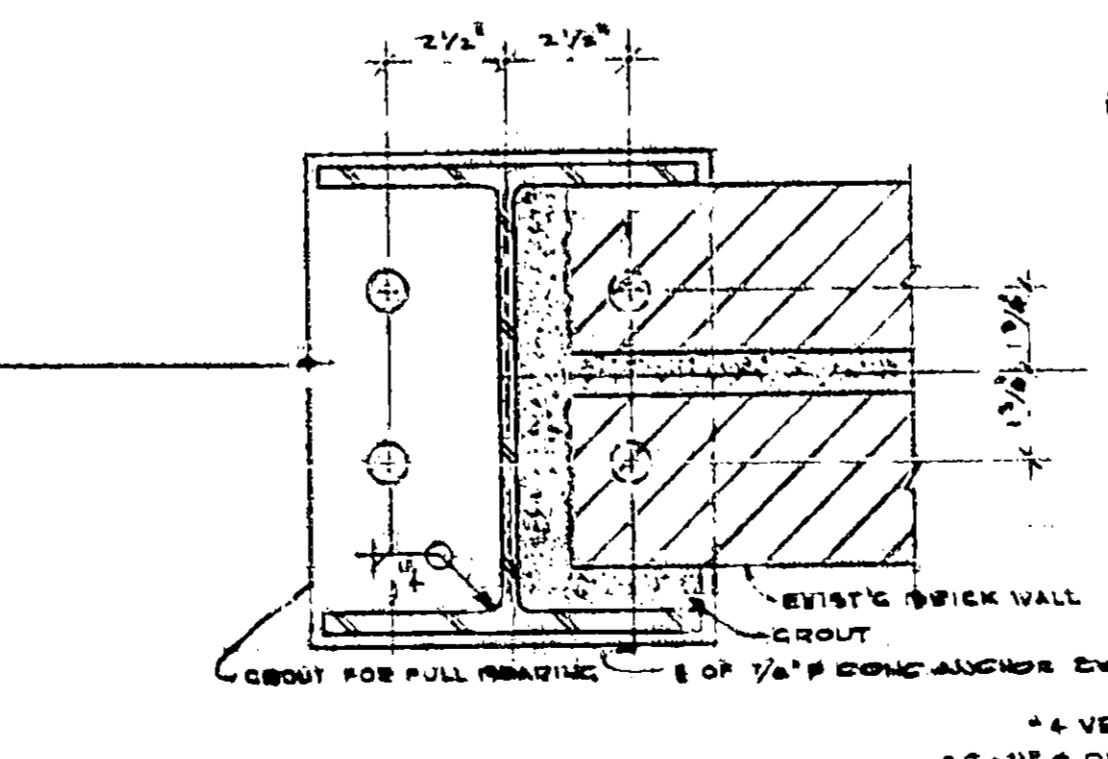
4 SECTION
SCALE: 3/4" = 1'-0"



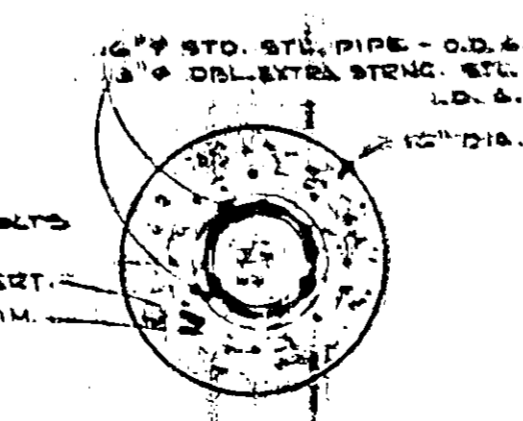
3 SECTION
SCALE: 3/4" = 1'-0"



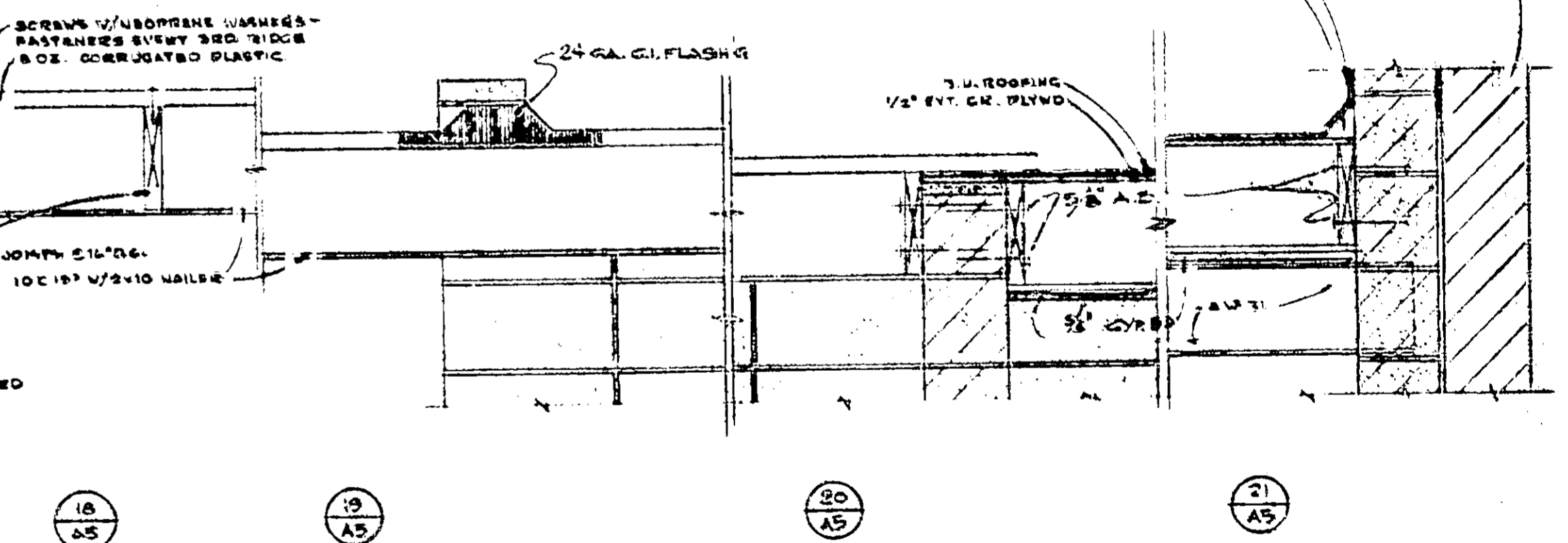
21 SECTION
SCALE: 3/4" = 1'-0"



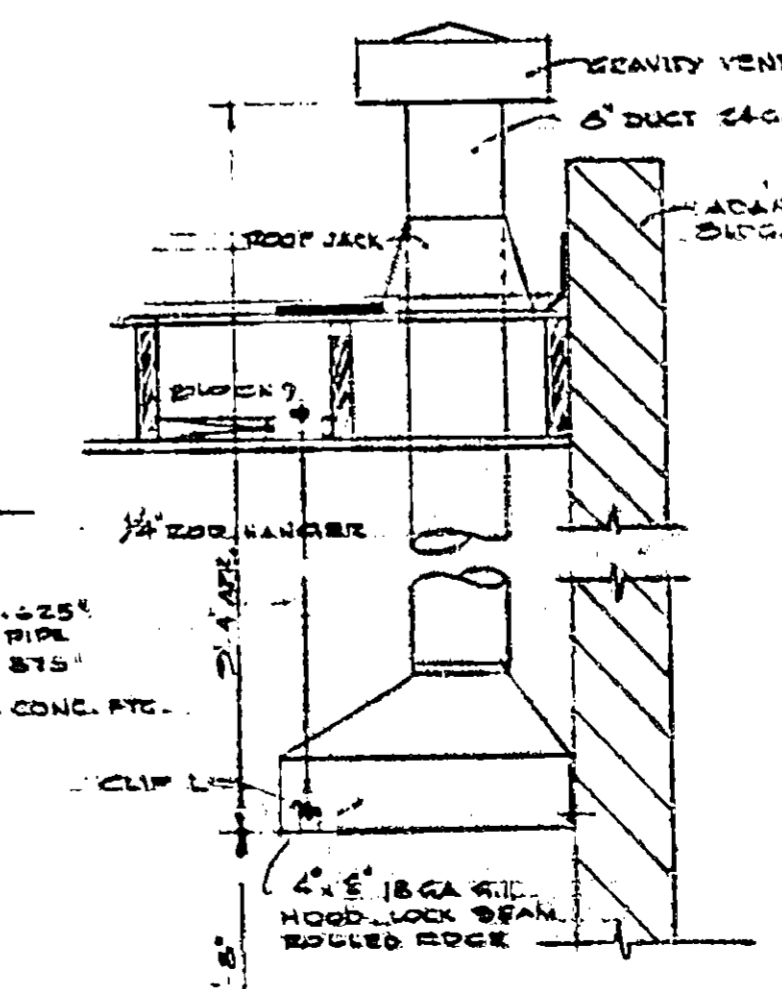
10 SECTION
SCALE: 3/4" = 1'-0"



22 SECTION
SCALE: 1" = 1'-0"



18 CANTILEVERED SECTION THRU ROOF
SCALE: 1/2" = 1'-0"



24 SECTION
SCALE: 3/4" = 1'-0"

NOTES:
CONTRACTOR SHALL ADEQUATELY SUPPORT FLOOR LOADS AND/OR ROOF LOADS AT EXISTING WALLS PRIOR TO CUTTING REQUIRED OPENINGS FOR ROOF WAYS AND WINDOWS. ALL SUCH WORK SHALL BE DONE IN ACCORDANCE WITH APPLICABLE EXISTING CODE REQUIREMENTS.

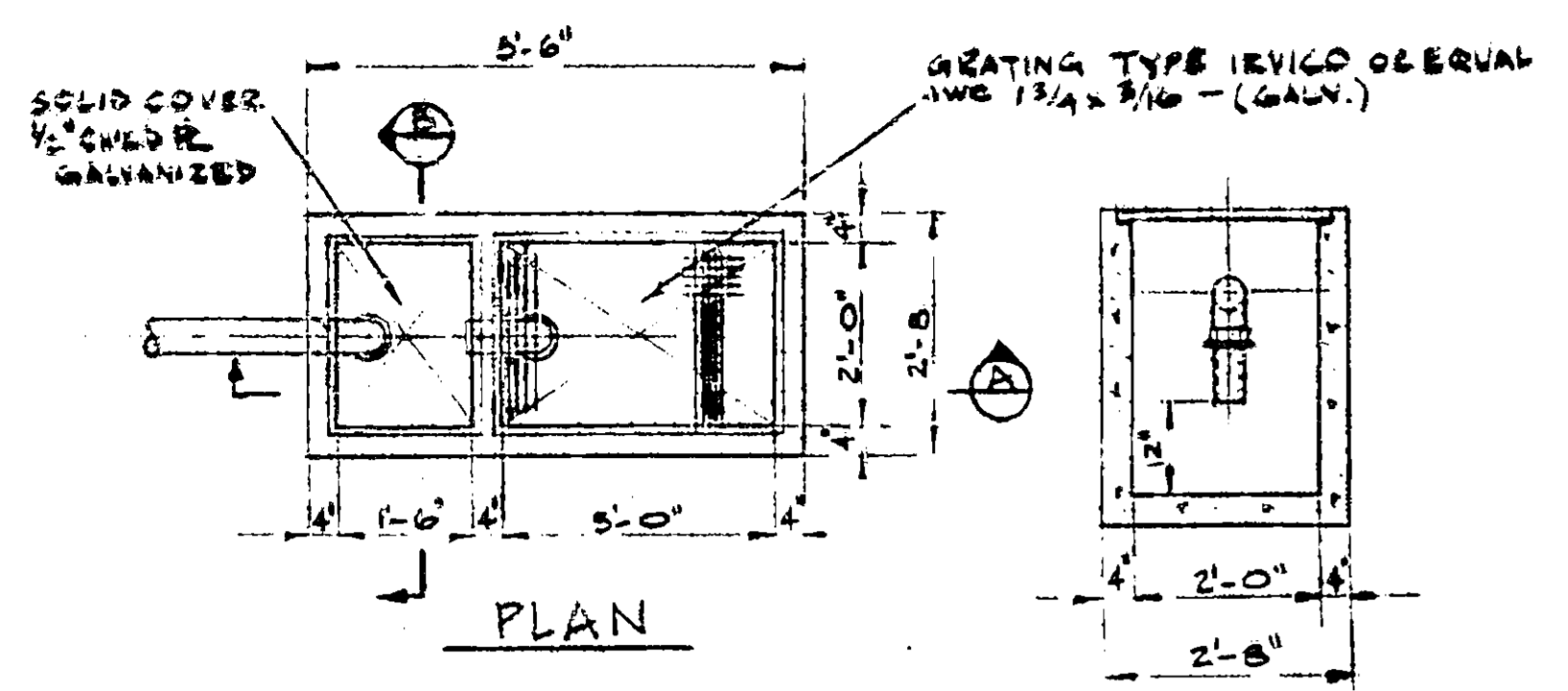
REFERENCES:
PLANS
FIELD BOOKS

NO.	REVISIONS	DATE

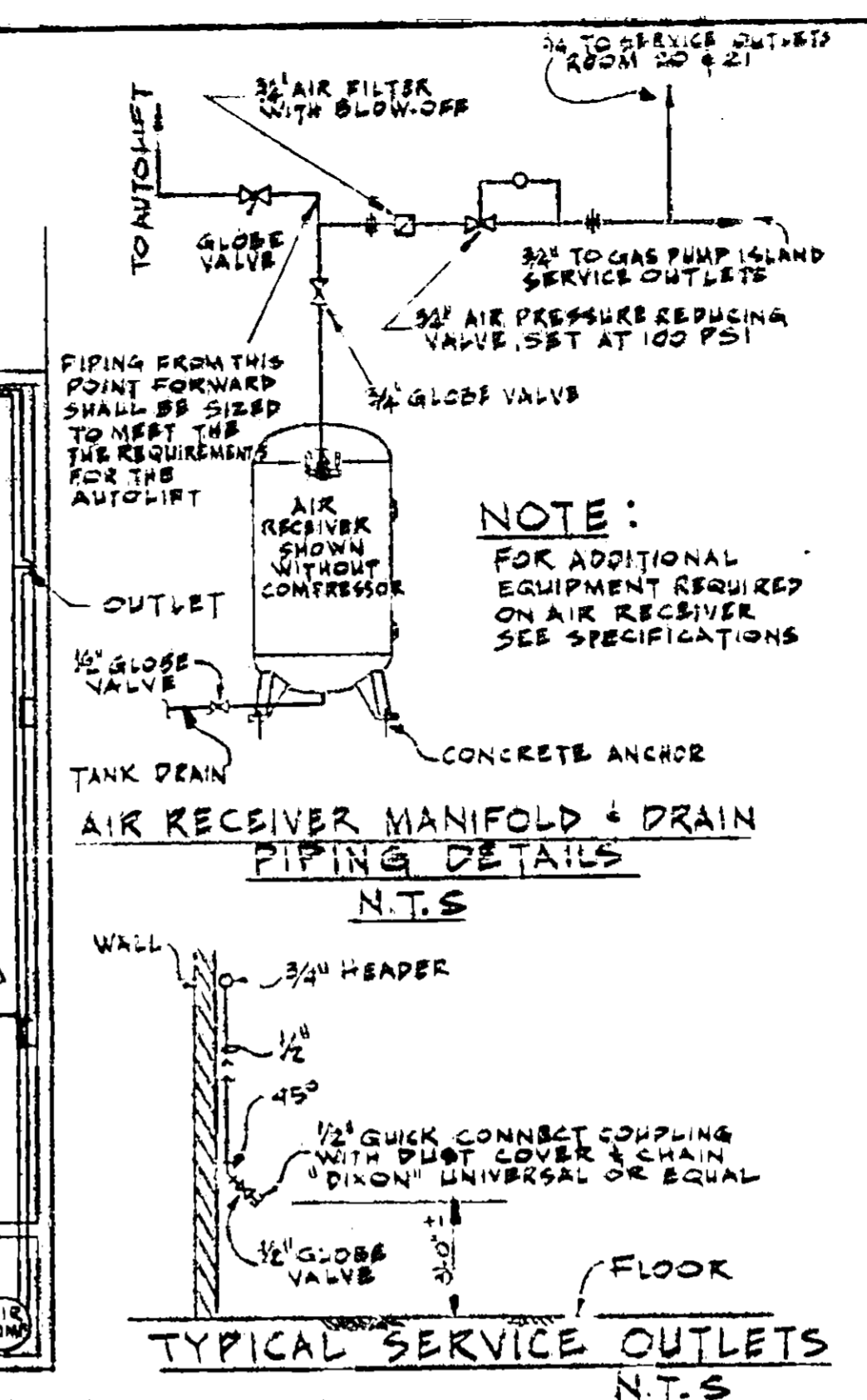
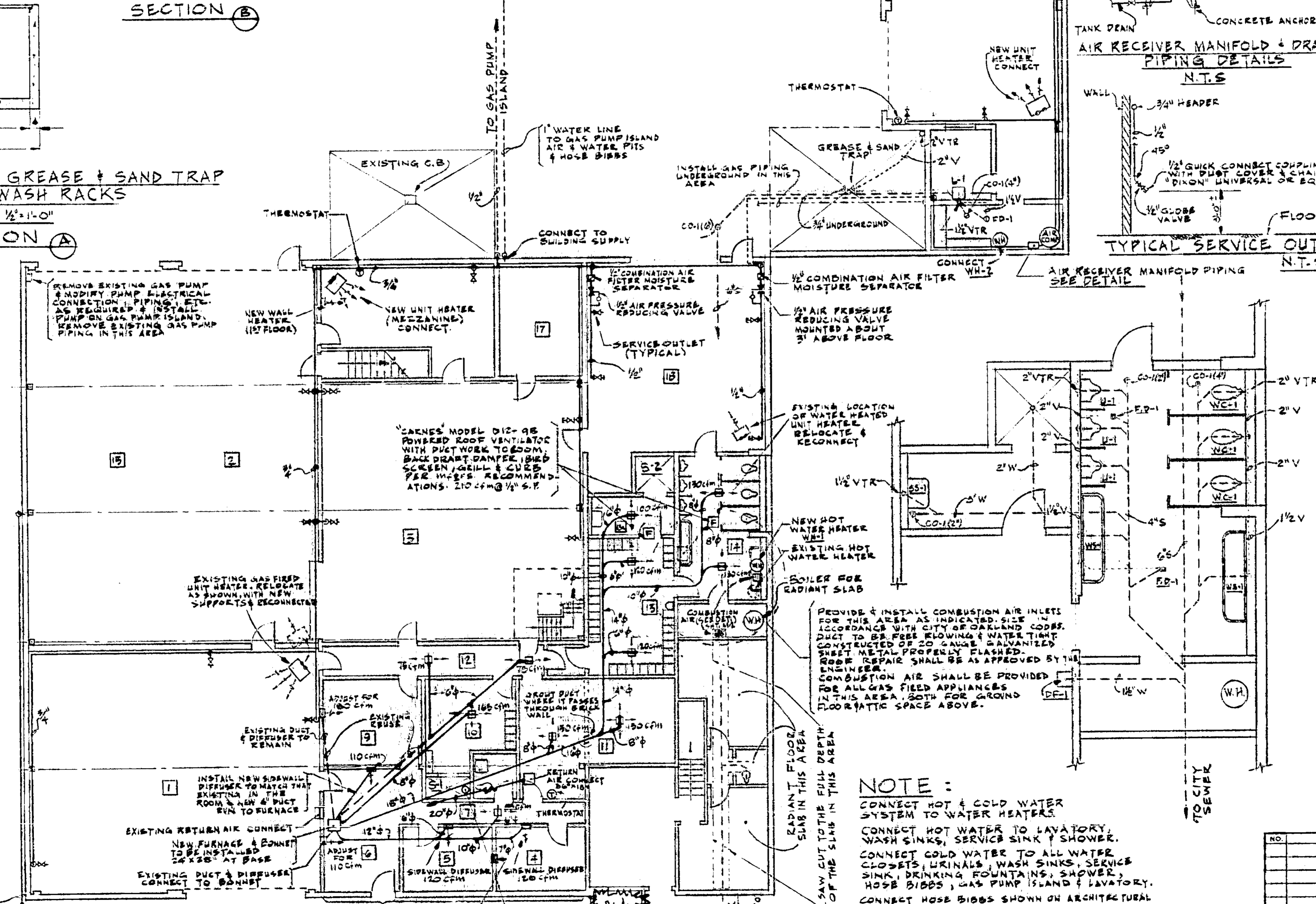
DRAWN: *[Signature]*
 CHECKED: *[Signature]*
 RECOMMENDED: *[Signature]*
 APPROVED: *[Signature]*
 ASST. CHIEF ENGINEER

PORT OF OAKLAND
 OAKLAND, CALIFORNIA
 DEMOLITION, ALTERATION, CONSTRUCTION OF BUILDINGS FOR CORPORATION YARD DETAILS
 DATE: 12-2-70
 FILE: AA1275
 SHEET: A5 OF 5 SHEETS

MICROFILMED MAY 15 1971



DETAILS OF GREASE & SAND TRAP FOR AUTO WASH RACKS
SCALE 1/2" = 1'-0"
SECTION A



TYPICAL SERVICE OUTLETS
N.T.S.

- NOTES**
- WHERE CUTTING OF THE EXISTING CONCRETE SLAB IS NECESSARY FOR THE INSTALLATION OF UNDERGROUND PIPING CONDUIT ETC. THE CONCRETE SHALL FIRST BE SAW CUT TO A MINIMUM DEPTH OF 2".
 - PIPING SHALL BE FIRMLY SUPPORTED BY HANGERS, SUPPORTS, GUIDES, ANCHORS & SWAY BRACINGS. CHAIN STRAPS AND PLUMBERS TAPE SHALL NOT BE USED FOR HANGERS.
 - SIDEWALL DIFFUSERS FOR ROOMS #4 & #5 SHALL BE BARBER COLEMAN TYPE GEA 20"x3" WITH OPPOSED BLADE DAMPER.
 - THE CONTRACTOR SHALL FURNISH & INSTALL TWO SHOWERS (S-1 & S-2 ON DWG.) COMPLETE WITH (GLASS) CERAMIC DIAL LETTE NO. B-1420 PUSH-PULL SHOWER FITTING WITH NGEN UNIT.
 - WATER PIPING INSTALLED BELOW GRADE SHALL BE SCHEDULE 40 GALVANIZED STEEL PIPE WITH SCOTCH 51 TAPE 2" WIDE DOUBLE HALF LAPPED.
 - LAVATORY SHALL BE "NOBICH" #1405-V, 20" x 18" WITH # B-2045A CAPEI DIAL-BSE FITTING.

H & V LEGEND

SYMBOL	DESCRIPTION
---	EXISTING DUCTS TO BE REUSED
---	NEW DUCTS TO NEW DIFFUSERS AND/OR RETURN AIR GRILLES
☐	UNIT HEATER
☐	EXHAUST FAN
---	DIFFUSER 2WAY BLOW UNDER 125 CFM VPSV61
---	" 4WAY BLOW OVER 125 CFM VPSV61
---	" SIDEWALL

FIXTURE CONNECTION SCHEDULE

SPEC.	DWG.	ITEM DESCRIPTION	SIZE	V	HW	CW
WC	WC-1	WATER CLOSET	2"	2"	-	3/4"
UR	U-1	URINAL	2"	1 1/2"	-	3/4"
L-1	L-1	LAVATORY	2"	1 1/2"	1/2"	1/2"
WS	WS-1	WASH SINK	2"	1 1/2"	1/2"	1/2"
SS	SS-1	SERVICE SINK	3"	1 1/2"	1/2"	1/2"
DF	DF-1	DRINKING FOUNTAIN	1 1/2"	1 1/2"	-	1/2"
FCO	CO-1	FLOOR CLEANOUT	*	-	-	-
FD	FD-1	FLOOR DRAIN	2"	1 1/2"	-	-
S-1	S-1	SHOWER	2"	1 1/2"	1/2"	1/2"
S-2	S-2	SHOWER	2"	1 1/2"	1/2"	1/2"
WH-1	WH-1	WATER HEATER	-	-	3/4"	3/4"
WH-2	WH-2	WATER HEATER	-	-	3/4"	3/4"
HB-1	HB	HOSE BIBBS - SEE SPECS.	-	-	-	3/4"

* SEE DWG.

PLUMBING LEGEND

SYMBOL	DESCRIPTION
CW	COLD WATER
HW	HOT WATER
NG	NATURAL GAS
V	VENT
VTR	VENT THROUGH ROOF
S	SOIL LINE
W	WASTE LINE

NOTE:
CONNECT HOT & COLD WATER SYSTEM TO WATER HEATERS.
CONNECT HOT WATER TO LAVATORY, WASH SINKS, SERVICE SINK & SHOWER.
CONNECT COLD WATER TO ALL WATER CLOSETS, URINALS, WASH SINKS, SERVICE SINK, DRINKING FOUNTAINS, SHOWER, HOSE BIBBS, GAS PUMP ISLAND & LAVATORY.
CONNECT HOSE BIBBS SHOWN ON ARCHITECTURAL DRAWINGS.

NOTE:
PROVIDE OR MODIFY EXISTING FURNACE & RETURN PLenum AS REQUIRED TO FURNISH AN OUTSIDE AIR TEMPERATURE CONTROLLED DAMPER MOTOR OPERATED SYSTEM. THE WINTER CONDITION SHALL BE 25% OUTSIDE AIR FROM OUTSIDE OF THE BUILDING MIXED WITH RETURN ROOM AIR. THE SUMMER CONDITION SHALL BE 100% OUTSIDE AIR FROM OUTSIDE OF THE BUILDING EXPELLING ALL RETURN AIR. DAMPER MOTOR SHALL BE OF THE MODULATING TYPE.

PORT OF OAKLAND
OAKLAND, CALIFORNIA
INNER HARBOR
DEMOLITION, ALTERATION, CONST. OF BUILDING FOR
CORPORATION YARD
HEATING) & PLUMBING

NO. _____ REVISIONS _____ DATE _____

DATE 12-7-70 FILE AA.1275

SCALE 1/2" = 1'-0"

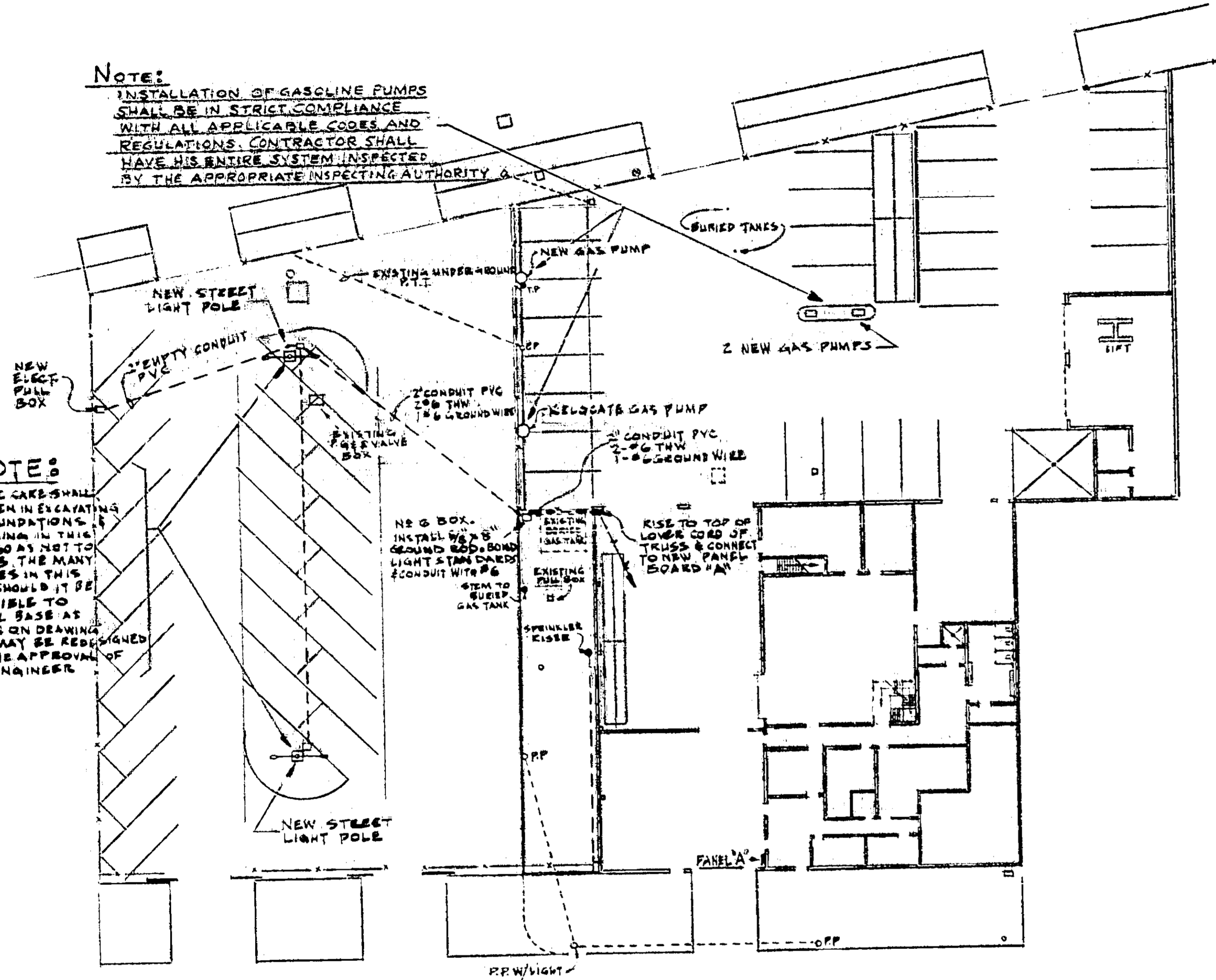
CHIEF ENGINEER

APPROVED _____

MICROFILMED

NOTE:
 INSTALLATION OF GASOLINE PUMPS SHALL BE IN STRICT COMPLIANCE WITH ALL APPLICABLE CODES AND REGULATIONS. CONTRACTOR SHALL HAVE HIS ENTIRE SYSTEM INSPECTED BY THE APPROPRIATE INSPECTING AUTHORITY.

NOTE:
 EXTREME CARE SHALL BE TAKEN IN EXCAVATING FOR FOUNDATIONS & TRENCHING IN THIS AREA SO AS NOT TO DISTURB THE MANY UTILITIES IN THIS AREA. SHOULD IT BE IMPOSSIBLE TO INSTALL BASE AS SHOWN ON DRAWING CASE MAY BE REDESIGNED WITH THE APPROVAL OF THE ENGINEER.

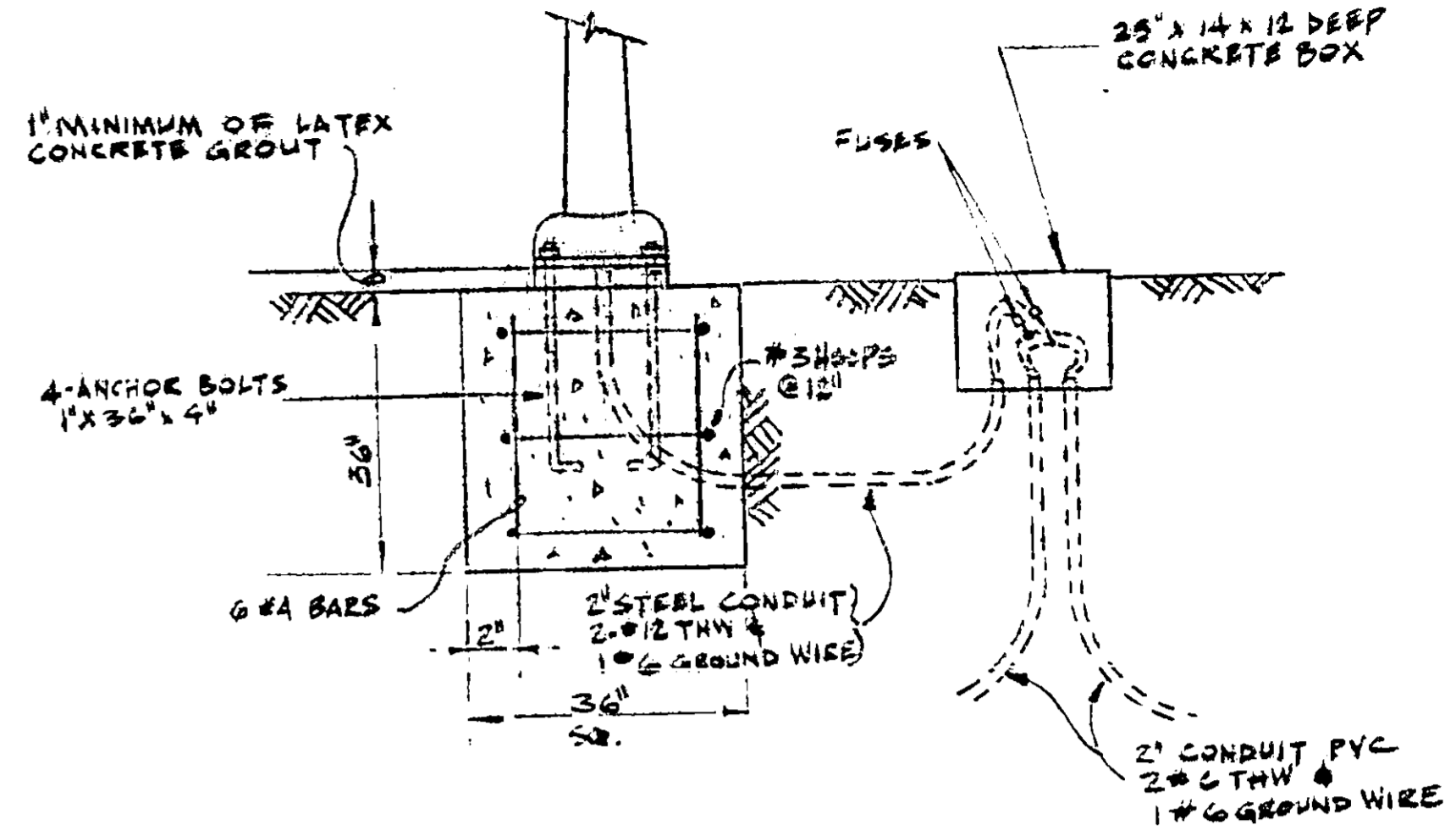


PLAN VIEW OF CORPORATION YARD

SCALE: 1" = 20'-0"

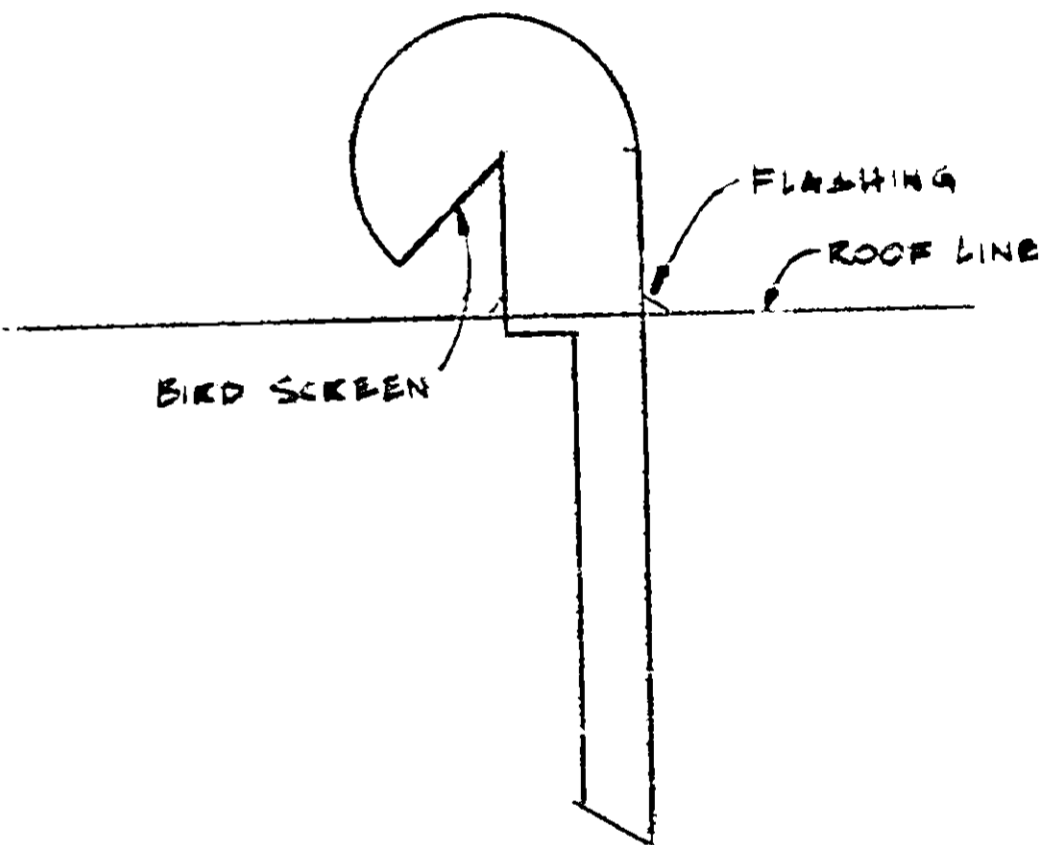
NOTE STREET LIGHT:

POLES: WELDRITE # N-28GD-2.
 LUMINAIRES: G.E. TYPE M-400A NO. C-723 G001 TYPE I WITH SELF CONTAINED REGULATOR BALLAST FOR 208 VOLTS.
 LAMPS: 400 WATT, DELUXE WHITE, H-400 DX 53-1 PAINT: INSIDE: 1 OUTSIDE PRIMER, ACRYLIC FINISH WITH 2 COATS AUTOMOTIVE ACRYLIC ENAMEL 4 MILS THICK. COLOR TO BE SELECTED BY ENGINEER.



PARK LIGHT FOUNDATION (TYP. 2 PLCS.)

N.T.S.



TYPICAL COMBUSTION AIR SUPPLY DETAIL (2 PLCS.)

N.T.S.

REFERENCES
 PLANS
 FIELD BOOKS

MICROFILMED MAY 13 1974

NO.	REVISIONS	DATE

PORT OF OAKLAND
 OAKLAND, CALIFORNIA
 INNER HARBOR
 DEMOLITION, ALTERATION, CONST.
 OF BUILDINGS FOR
 CORPORATION YARD
 MISCELLANEOUS

DATE 12-2-70 FILE AA 1275
 SCALE AS NOTED

DRAWN: [Signature]
 CHECKED: [Signature]
 RECOMMENDED: [Signature]
 APPROVED: [Signature] ASST. CHIEF ENGINEER

CHIEF ENGINEER
 SHEET M-25
 OF 3 SHEETS