

ASSESSOR'S MAP 49

1325 Code Area No. 14-006 14-003 1489

1327

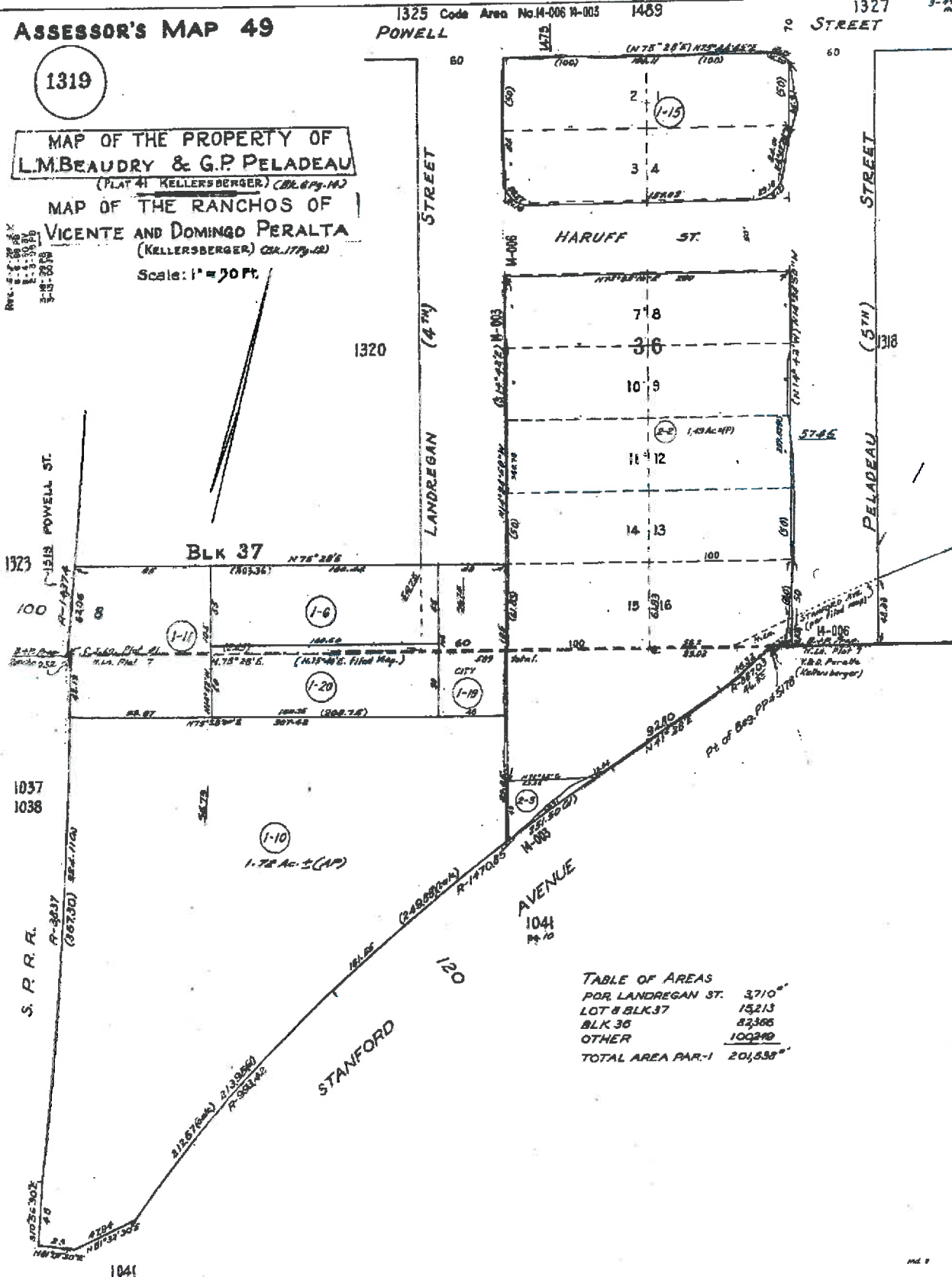
1319

**MAP OF THE PROPERTY OF
L.M. BEAUDRY & G.P. PELADEAU**
(PLAT 41 KELLERSBERGER) (BLK 879-14)

**MAP OF THE RANCHOS OF
VICENTE AND DOMINGO PERALTA**
(KELLERSBERGER) (CR. 1779-12)

Scale: 1" = 50 Ft.

REV. 4-1-1906
REV. 4-1-1908
REV. 4-1-1910
REV. 4-1-1912
REV. 4-1-1914
REV. 4-1-1916
REV. 4-1-1918
REV. 4-1-1920
REV. 4-1-1922
REV. 4-1-1924
REV. 4-1-1926
REV. 4-1-1928
REV. 4-1-1930
REV. 4-1-1932
REV. 4-1-1934
REV. 4-1-1936
REV. 4-1-1938
REV. 4-1-1940
REV. 4-1-1942
REV. 4-1-1944
REV. 4-1-1946
REV. 4-1-1948
REV. 4-1-1950
REV. 4-1-1952
REV. 4-1-1954
REV. 4-1-1956
REV. 4-1-1958
REV. 4-1-1960
REV. 4-1-1962
REV. 4-1-1964
REV. 4-1-1966
REV. 4-1-1968
REV. 4-1-1970
REV. 4-1-1972
REV. 4-1-1974
REV. 4-1-1976
REV. 4-1-1978
REV. 4-1-1980
REV. 4-1-1982
REV. 4-1-1984
REV. 4-1-1986
REV. 4-1-1988
REV. 4-1-1990
REV. 4-1-1992
REV. 4-1-1994
REV. 4-1-1996
REV. 4-1-1998
REV. 4-1-2000



**TABLE OF AREAS
FOR LANDREGAN ST.**

LOT 8 BLK 37	3710"
BLK 36	15213
OTHER	82386
TOTAL AREA PAR-1	100299

49-1319-1-19 Parcel History:

Formerly : 49-1319-1-5

Now : 49-1552-1



COUNTY OF ALAMEDA
Assessor's Office

[Help](#)

[New Query](#)

Property Value System

- History**
- Value
- Transfer
- Map
- Glossary

Parcel Number: **49-1552-1** Inactive: **N** Lien Date: **01/01/2015** Owner: **CITY OF EMERYVILLE**
 Property Address: **HOLLIS ST, EMERYVILLE, CA 94608**

[Parcel History](#)

Mailing Name	Historical Mailing Address	Document Date	Document Number	Value From Trans Tax	Parcel Count	Use
CITY OF EMERYVILLE List Owners	1333 PARK AVE , EMERYVILLE, CA 94608-3517	03/04/2011	2011-72406		1	0300
Attn: CITY ATTORNEY REDEVELOPMENT AGENCY OF THE CITY OF EMERYVILLE List Owners	2200 POWELL ST , EMERYVILLE, CA 94608-1809	02/14/2005	ASSR-896096		5	0300

All information on this site is to be assumed accurate for property assessment purposes only, and is based upon the Assessor's knowledge of each property. Caution is advised for use other than its intended purpose.

The Alameda County Intranet site is best viewed in Internet Explorer Version 5.5 or later.
 Click [here](#) for more information regarding supported browsers.

Copyright © 2001 Alameda County

R03185

ASSESSOR'S MAP 49

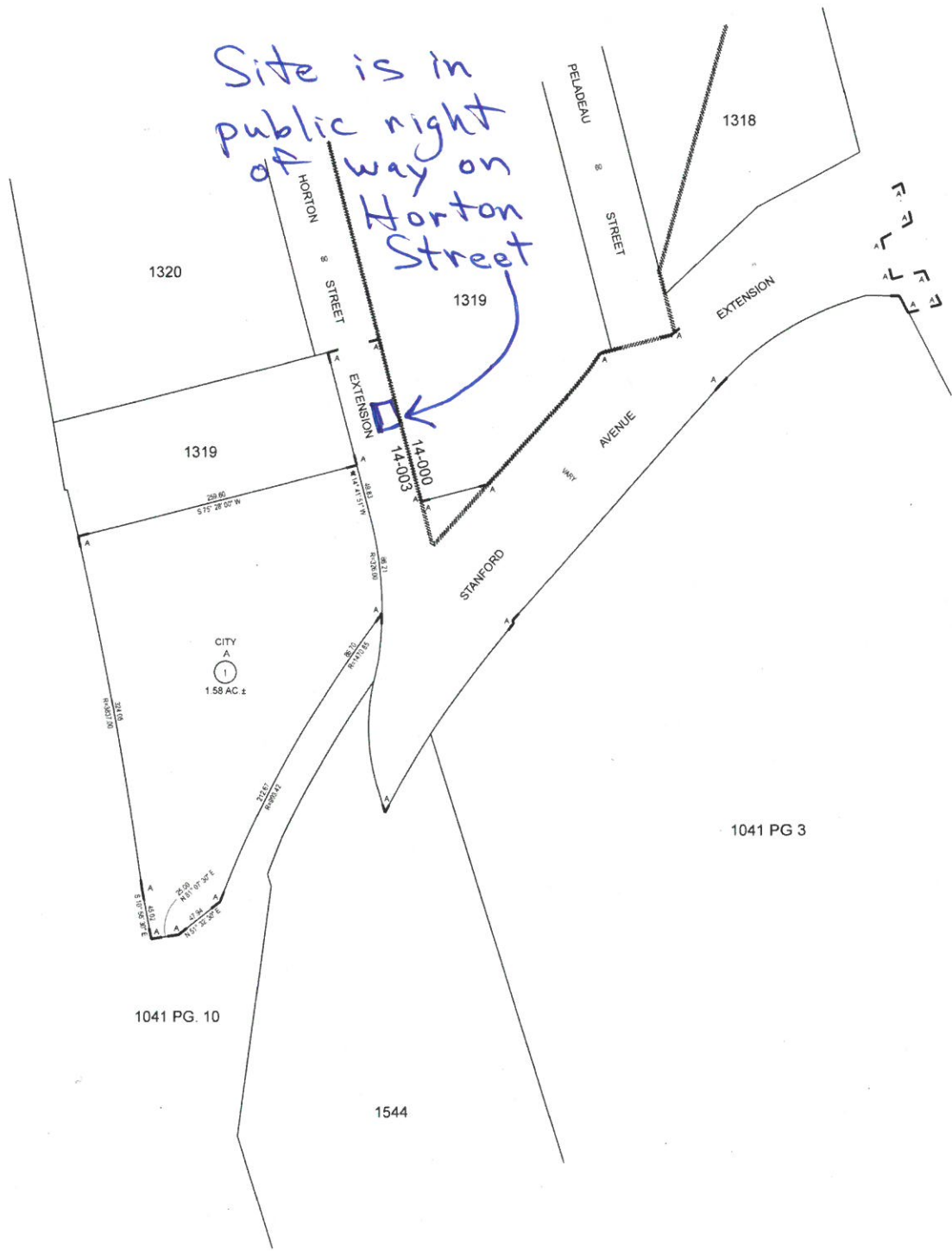
Code Area Nos. 14-000 14-003

1552 SCALE: 1" = 80'

(A) P.M. 7868 280/41-42



Site is in public right of way on Horton Street



REVISÉ: 07-13-11 LL
DRAWN: 05-03-06 ZC

CITY A
1
158 AC ±

1041 PG 3

1041 PG. 10

1544

FORMERLY: FOR BLK. 1041 & 1319