

# NEHERSON/BROADWAY GRAND REDEVELOPMENT PROJECT

CURRENT APN DESIGNATIONS (AS OF OCT. 2012)

1,1-DCA PLUME (ESTIMATED PLUME)

GW-1B (2003)	µg/L	TR-205 (2006)	µg/L	G-1 (2011)	µg/L	G-2 (2011)	µg/L	G-5 (2011)	µg/L	G-4 (2011)	µg/L	G-3 (2011)	µg/L
TCE	1.2	TCE	3.1	TCE	2.81	TCE	3.01	TCE	<0.5	TCE	<1.0	TCE	<1.0
1-1 DCA	7.3	1-1 DCA	8.8	1-1 DCA	74.1	1-1 DCA	46.8	1-1 DCA	<0.5	1-1 DCA	<1.0	1-1 DCA	<1.0
TPHg	<50	TPHg	<50	TPHg	<50	TPHg	62	TPHg	259	TPHg	593	TPHg	1,130
MTBE	<0.5	MTBE	<0.5	Lead (mg/kg)	38.9	Lead (mg/kg)	1,210	Lead (mg/kg)	33	Lead (mg/kg)	193	Lead (mg/kg)	--

TR-204 (2006)	µg/L
TCE	<0.5
1-1 DCA	<0.5
TPHg	<50
MTBE	<0.5

G-6 (2011)	µg/L
TCE	<20
1-1 DCA	<20
TPHg	35,900
Lead (mg/kg)	215

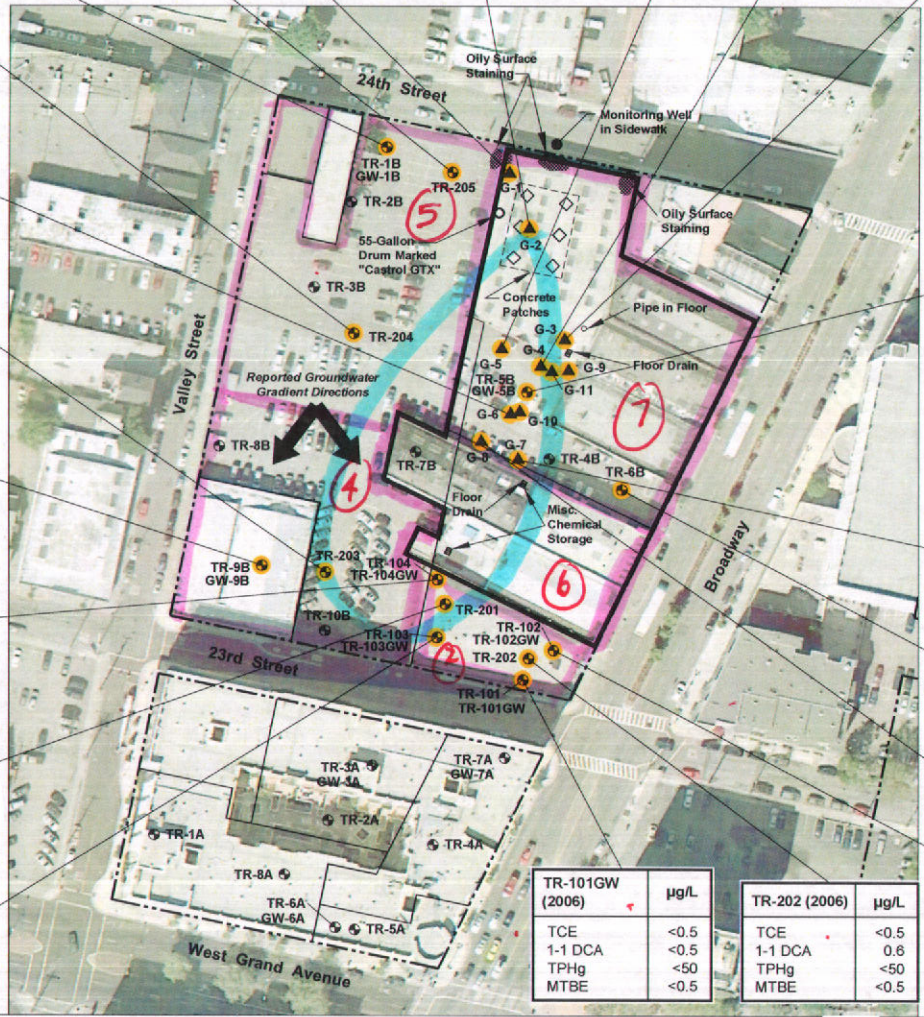
TR-203 (2006)	µg/L
TCA	34
1-1 DCE	7
TPHg	<50
MTBE	<0.5

GW-9B (2003)	µg/L
TCA	<0.5
1-1 DCE	<0.5
TPHg	<50
MTBE	<0.5

TR-104GW (2006)	µg/L
TCE	3.5
1-1 DCA	39
TPHg	<50
MTBE	0.5

TR-201 (2006)	µg/L
TCE	3.8
1-1 DCA	46
TPHg	<0.5
MTBE	<0.5

TR-103GW (2006)	µg/L
TCE	<0.5
1-1 DCA	<0.5
TPHg	<50
MTBE	<0.5



GW-5B (2003)	µg/L
TCE	<0.5
1-1 DCA	<0.5
TPHg	4,500
MTBE	1.6

G-7 (2011)	µg/L
TCE	<1.0
1-1 DCA	<1.0
TPHg	1,800
Lead (mg/kg)	119

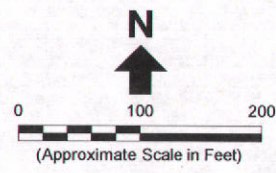
TR-6B-3.5 (2003)	µg/L
Lead	160

G-8 (2011)	µg/L
TCE	13.6
1-1 DCA	42.2
TPHg	1,400
Lead (mg/kg)	76.9

TR-102GW (2006)	µg/L
TCE	<0.5
1-1 DCA	<0.5
TPHg	<50
MTBE	<0.5

TR-101GW (2006)	µg/L
TCE	<0.5
1-1 DCA	<0.5
TPHg	<50
MTBE	<0.5

TR-202 (2006)	µg/L
TCE	<0.5
1-1 DCA	0.8
TPHg	<50
MTBE	<0.5



- Legend:**
- Subject Property
  - - - - - Approximate Boundary of Parcel A/B
  - ⊕ TR-5B — Approximate Location of Environmental Boring Performed by Treadwell & Rollo, Inc., June 2003
  - ⊕ GW-5B — Denotes Groundwater Sample Collected
  - ▲ G-3 — Soil and/or Groundwater Sampling Location

- Abbreviations:**
- µg/L = micrograms per liter (groundwater)
  - mg/kg = milligrams per kilogram (soil)
  - TCE = trichloroethene
  - 1-1 DCA = 1,1-dichloroethane
  - TPHg = total petroleum hydrocarbons as gasoline
  - MTBE = methyl tertiary butyl ether

- Notes:**
- All locations are approximate.
  - Basemap source: Google Earth Pro, date of imagery 1 October 2011.

**Erler & Kalinowski, Inc.**

Selected Soil and Groundwater Data

Signature Development Group  
Oakland, CA  
January 2012  
EKI B10088.00

Figure 4

1,1,DCA

01/10/2012 10:00:00 AM Page 4 of 12



NEIGHBORHOOD/BROADWAY GRAND REDEVELOPMENT  
 PARCELS (CURRENT APN DESIGNATIONS  
 OCTOBER 2012)

For Assessment Use Only

ASSESSOR'S MAP 8

Code Area Nos. 17-022

739 SCALE: 1" = 50'

- (A) MAP of the PACIFIC HOMESTEAD Liber W of Deeds, Page 2
- (B) LOCUST, BROADWAY & ELM STREET TRACT 4/7
- (C) P.M. 8832 306/28-27
- (D) P.M. 9872 314/53-54

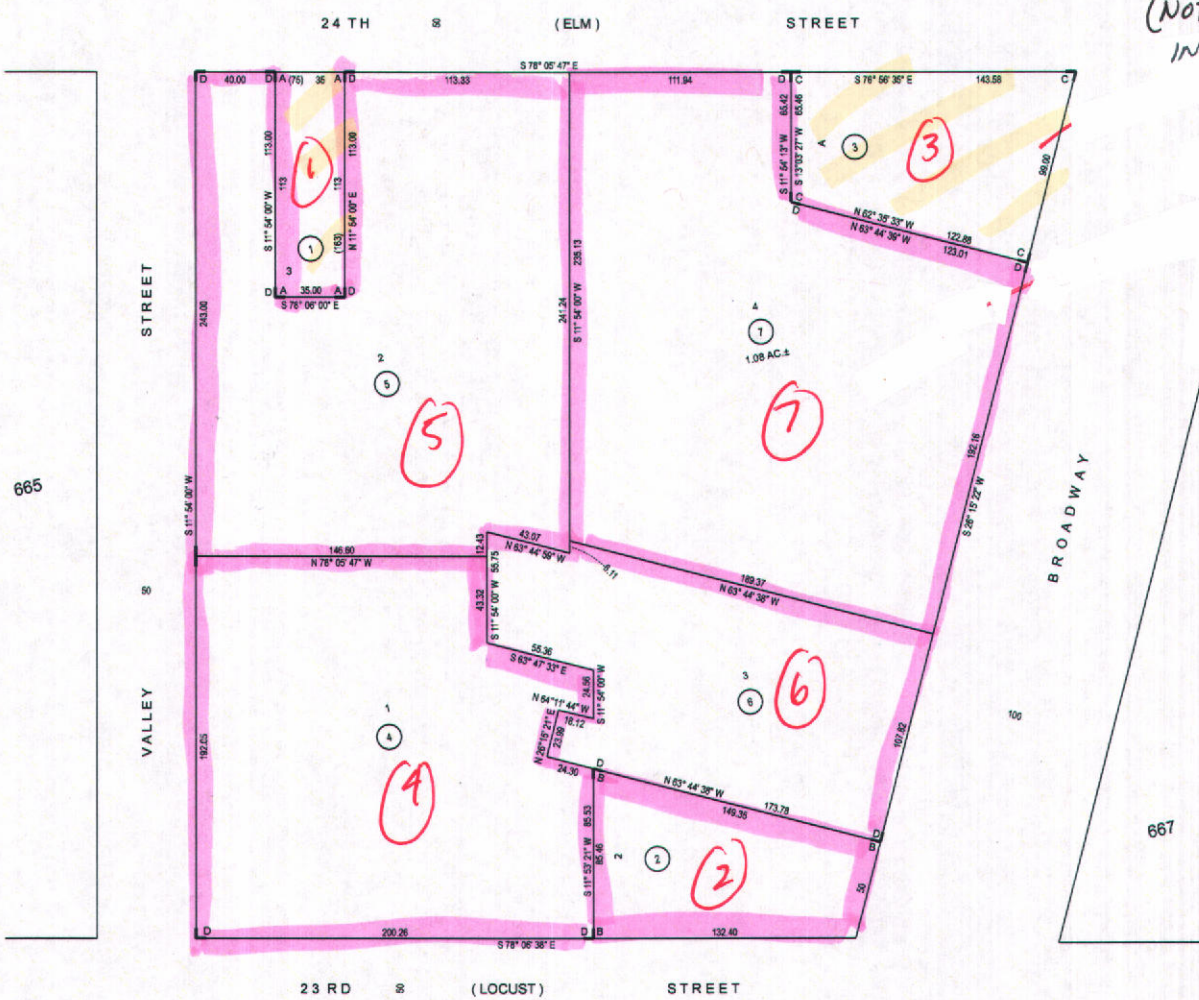


674

OUTPARCELS  
 (NOT INCLUDED  
 IN REDEVELOPMENT)

REVISED:

DRAWN: 01-28-10 CC



665

667

658

715  
718 thru 722

656

FORMERLY: BLK 666

TRA: 004C

REF:

HPN: 7

IND PG: