

## Detterman, Mark, Env. Health

---

**From:** Detterman, Mark, Env. Health  
**Sent:** Monday, April 07, 2014 12:03 PM  
**To:** 'Erik Oehlschlager'  
**Cc:** mkaufman@ci.emeryville.ca.us; mroberts@ci.emeryville.ca.us;  
mlamphere@lampherelaw.com  
**Subject:** RE: APEX: Revision of proposed soil boring locations

Erik,  
The revised locations look reasonable. I'll use this email as a work plan addendum to document the changes. You should use this email to document ACEH concurrence with the revised scope of work as also modified by the February 3, 2014 directive letter. Presuming the City will issue encroachment permits, I've also extended the submittal date for the site investigation report to June 13, 2014.  
Let me know if you have questions.

*Mark Detterman*  
*Senior Hazardous Materials Specialist, PG, CEG*  
*Alameda County Environmental Health*  
*1131 Harbor Bay Parkway*  
*Alameda, CA 94502*  
*Direct: 510.567.6876*  
*Fax: 510.337.9335*  
*Email: [mark.detterman@acgov.org](mailto:mark.detterman@acgov.org)*

*PDF copies of case files can be downloaded at:*

*<http://www.acgov.org/aceh/lop/ust.htm>*

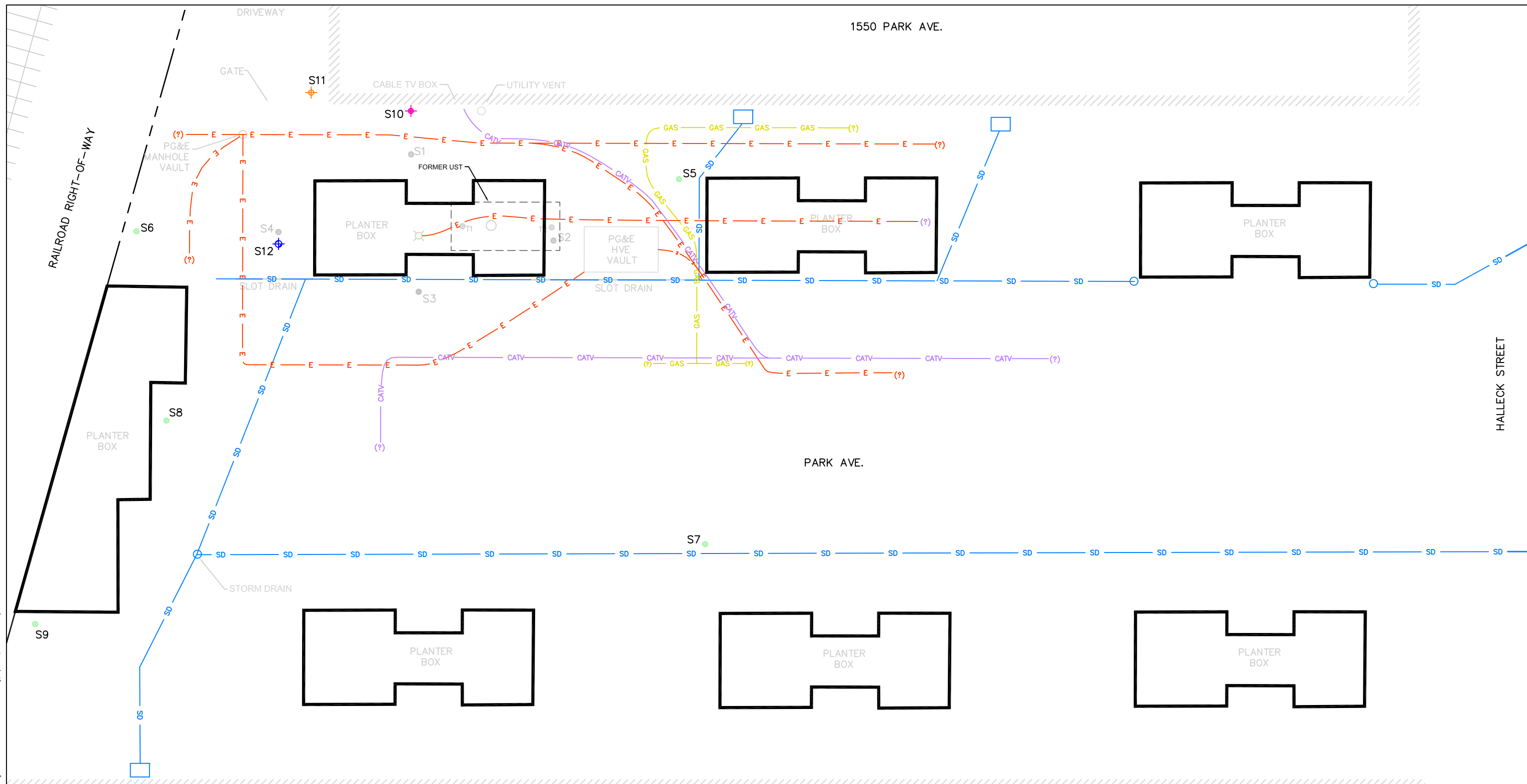
---

**From:** Erik Oehlschlager [<mailto:erik.oehlschlager@errg.com>]  
**Sent:** Friday, April 04, 2014 2:57 PM  
**To:** Detterman, Mark, Env. Health  
**Cc:** [mkaufman@ci.emeryville.ca.us](mailto:mkaufman@ci.emeryville.ca.us); [mroberts@ci.emeryville.ca.us](mailto:mroberts@ci.emeryville.ca.us); [mlamphere@lampherelaw.com](mailto:mlamphere@lampherelaw.com)  
**Subject:** APEX: Revision of proposed soil boring locations

Mark,  
Attached are a map of the storm drain layout provided by City of Emeryville and a map with new soil boring locations S7, S8, and S9. S7 has been relocated in the presumed up gradient direction of the former UST along the storm drain line to investigate preferential pathway. S8 and S9 have been moved to the west to investigate aerial and vertical extent along the railroad right-of-way.

**Erik Oehlschlager**  
Geologist  
ERRG  
4585 Pacheco Blvd.  
Martinez, CA 94553  
925.969.0750 **Main**  
925.839.2274 **Direct**  
925.577.4423 **Mobile**  
[erik.oehlschlager@errg.com](mailto:erik.oehlschlager@errg.com) **Email**

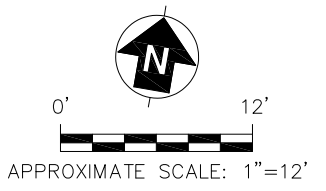
FILE NAME: N:\Graphics\2013\2013-094 APEX Emeryville\Fig3.dwg LAYOUT NAME: 3 PLOTTED: Friday, April 04, 2014 - 2:37pm




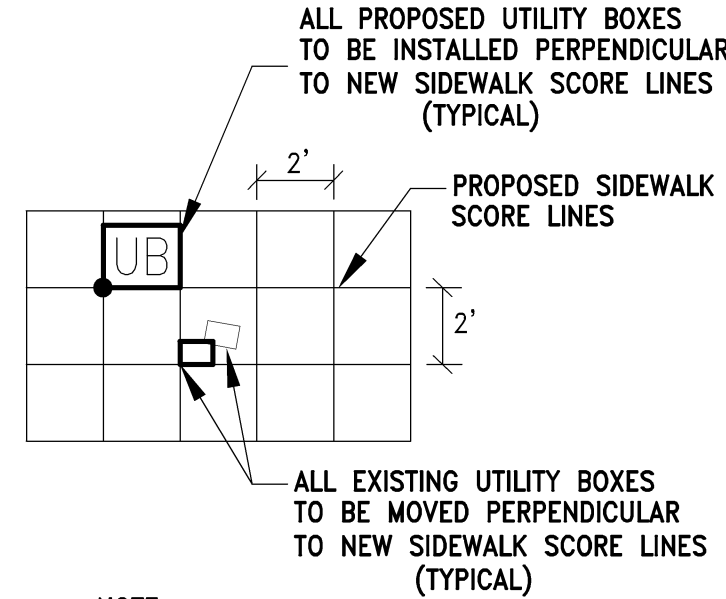
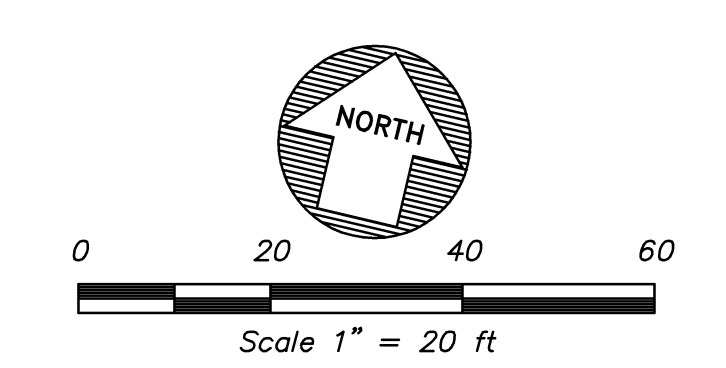
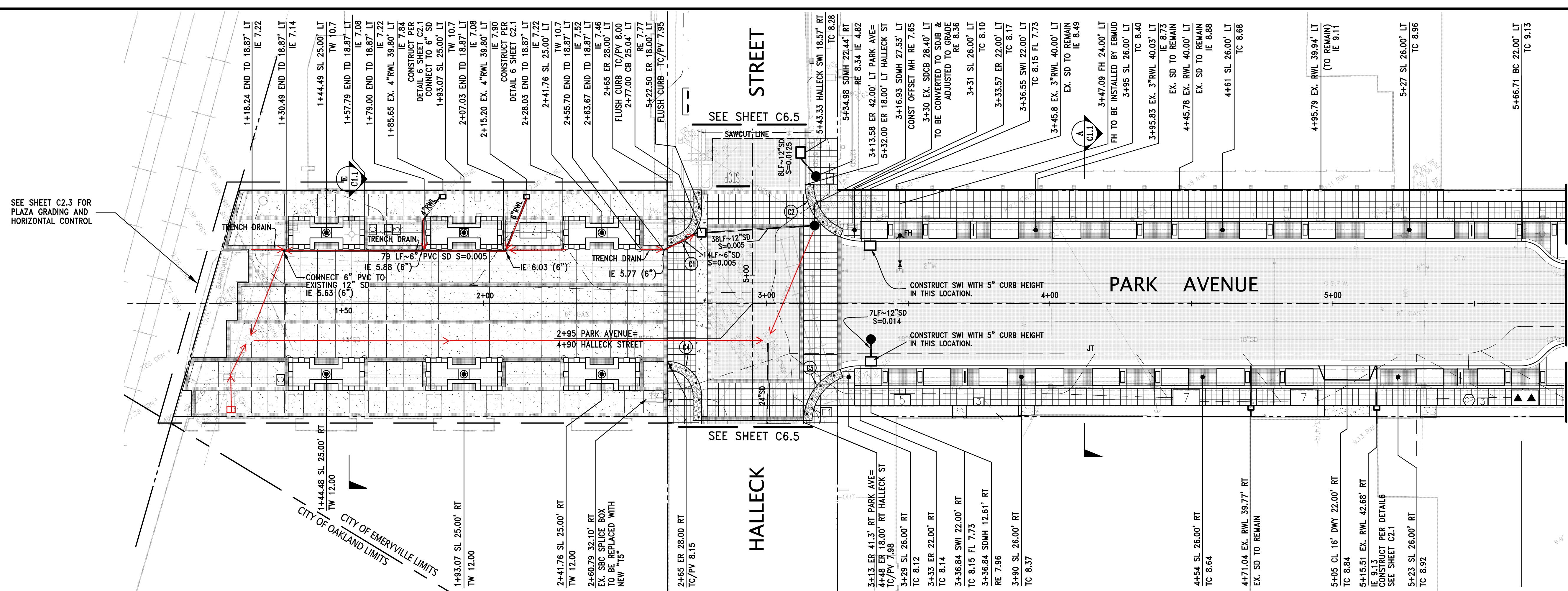
**LEGEND:**

- S3 ● PREVIOUS SOIL SAMPLE LOCATION
- S5 ● PROPOSED SOIL AND GROUNDWATER SAMPLE LOCATION
- S10 ◆ PROPOSED SOIL, GROUNDWATER, AND SOIL GAS SAMPLE LOCATION
- S11 ◆ PROPOSED SOIL GAS SAMPLE LOCATION
- S12 ◆ PROPOSED GROUNDWATER MONITORING WELL
- E — ELECTRICAL LINE
- SD — STORM DRAIN LINE
- CATV — CABLE TELEVISION LINE
- GAS — GAS LINE

4091 HALLECK ST., 1559 PARK AVE., 4099 HALLECK ST.



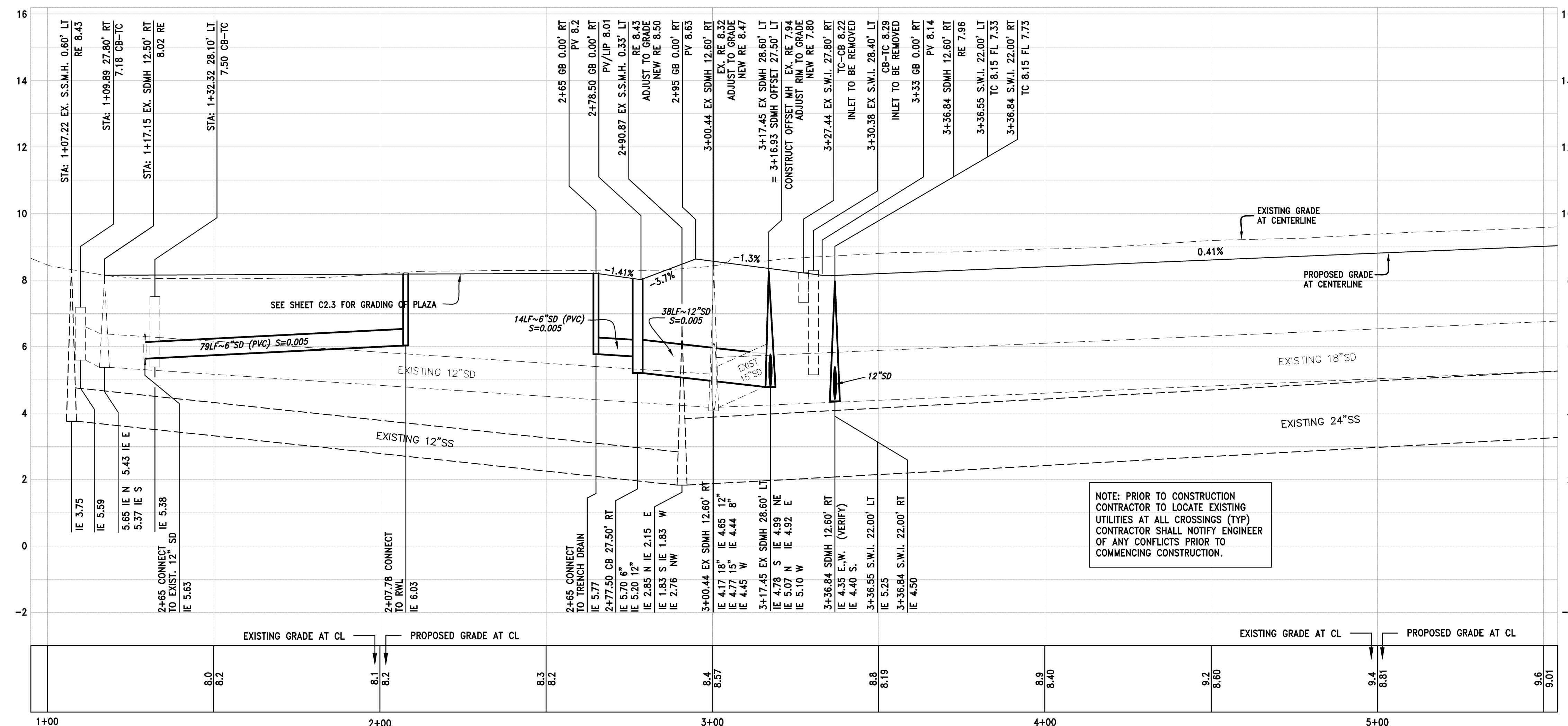
 <b>Engineering/Remediation Resources Group, Inc.</b> 4585 Pacheco Blvd, Suite 200 Martinez, California 94553 (925) 969-0750	CLIENT: APEX REFRIGERATION, INC. EMERYVILLE, CALIFORNIA	<b>PROPOSED SAMPLE LOCATIONS AND UTILITY LINES</b>		
	LOCATION: 1550 PARK AVENUE EMERYVILLE, CALIFORNIA	DRAWN BY: RDB 04/04/14	CHECKED BY: EKO 04/04/14	PROJECT NO. 2013-094



UTILITY BOX INSTALLATION  
NTS

CURVE TABLE			
NO.	RADIUS	DELTA	LENGTH
C1	12'	90°00'14"	18.85'
C2	20'	90°00'00"	31.42'
C3	20'	90°00'00"	31.42'
C4	12'	89°59'22"	18.85'

PLAN



NOTE: PRIOR TO CONSTRUCTION CONTRACTOR TO LOCATE EXISTING UTILITIES AT ALL CROSSINGS (TYP) CONTRACTOR SHALL NOTIFY ENGINEER OF ANY CONFLICTS PRIOR TO COMMENCING CONSTRUCTION.

PARK AVENUE PROFILE  
SCALE: 1" = 20' H. 1" = 2' V.

LEGEND

	BRICK PAVERS (REFER TO LANDSCAPE PLANS FOR DETAILS)
	SCORED CONCRETE
	AC PAVEMENT
	CONCRETE

SEE SHEET C2.3 FOR PLAZA GRADING AND HORIZONTAL CONTROL

MATCH LINE 5+50 SEE SHEET C6.2

SEE SHEET C6.5

SEE SHEET C6.5

CITY OF OAKLAND LIMITS  
CITY OF EMERYVILLE LIMITS

NO.	REVISION	BY	NO.	REVISION
1	60% CITY SUBMITTAL	ES	1	95% CIVIL SET
2	PROGRESS SET	ES	2	REVISED 95% SUBMITTAL
3	PROGRESS SET	ES	3	BID SET
4	90% CIVIL SET	CM	4	
5	95% CIVIL SET	CM	5	

DATE 10/2004  
SCALE 1" = 20'  
DESIGNER CM  
JOB NO. A04502  
SHEET **C6.1**  
OF 37 SHEETS

**KIER & WRIGHT**  
CIVIL ENGINEERS & SURVEYORS, INC.  
1233 Quarry Lane, Suite 145  
Pleasanton, California 94566  
(925) 249-6535  
Fax (925) 249-6563

EMERYVILLE, CALIFORNIA