

CLOSURE PLAN

FOR

Western Forge & Flange Co. - Albany

540 Cleveland Avenue
Albany, CA

July 2007

CLOSURE PLAN

Prepared for:

Western Forge & Flange Co. - Albany

To be submitted to:

Alameda County Department of Environmental Health

This Closure Plan is being submitted under the following conditions:

Facility is closing down

Sampling: Sampling will be based on the recommendations in this plan and supplemented with the requirements outlined by the Alameda County Department of Environmental Health

Inspection: Inspections will be scheduled after the submittal of the plan.

Fire Department Staff time activities will include:

Proposal review

Site walk

Sampling oversight

Final report review and sign-off

Table of Contents

I	Facility Description
A	Location
B	Site Use and History
C	Building Layout
II	Hazardous Materials
A	Areas of Use
B	Types of Hazardous Materials
III	Health and Safety Plan
A	Organizational Structure
B	Safety and Health Hazard Analysis
C	Employee Training
D	Personal Protective Equipment
E	Emergency Response Plan
IV	Closure Plan
A	Removal of Hazardous Materials
B	Decontamination and Removal of Equipment
C	Decontamination of Building Materials
D	Wastewater Treatment and Waste Disposal
E	Facility description/Equipment Locations
F	Stormwater Sewers
G	Asbestos
H	Open Lot Soil Contamination
I	Storage Tanks
J	Reporting
V	Sampling Plan
A	Proposed Sample Locations
B	Sample Collection and Preservation
C	Chain of Custody
D	Analysis
E	Person Responsible for Sample Collection
F	Laboratory Information
VI	Proposed Closure Schedule
VII	Contractors
VIII	Coordination with other Agencies
IX	Certifications
X	Notification Letters

I. FACILITY DESCRIPTION

A. LOCATION

Site Address

Business Name: Western Forge & Flange Co. - Albany
Business Address: 540 Cleveland Avenue
City, State, Zip: Albany, CA 94706
County: Alameda
Telephone Number: (925) 524-8380
Operator or Owner: Walter Pierce

Mailing Address

Company: Western Forge & Flange Co.
Contact Name: Walter Pierce
Title: President
Street: 687 County Rd. 2201
City, State, Zip: Cleveland, TX 77327
Telephone Number: (281) 727-7000

Property Owner

Name: Western Forge & Flange Co.
Street: 687 County Rd. 2201
City, State, Zip: Cleveland, TX 77327
Contact: Walter Pierce
Telephone: (281) 727-7000

B. SITE USE AND HISTORY

Business Activity Description:

Western Forge & Flange Co. – Albany

Albany Western Forge & Flange manufactures flanges and forgings made from a variety of different materials including: titanium, aluminum, high nickel alloys, stainless steel, and alloy steels. Raw material stock is cut and then heated in furnaces. The flanges are then forged (hammered or pressed) into shape. The part is machined, if requested by the customer. Approximately 60% of all projects are machined. Flanges are then inspected and shipped to customers.

Date Business Started: 1944

Facility Description:

Square Footage: 25,000 (approximate)

Containment Area Description:

All hazardous material are in portable secondary container units.

Adjacent Properties:

North: Albany Street

South: Grace Bakery

East: Freeway I-80

West: Railroad tracks

C. BUILDING LAYOUT

Please see the following drawings.

II. HAZARDOUS MATERIALS

A. AREAS OF USE

See attached hazardous material inventory

B. TYPES OF HAZARDOUS MATERIALS

Lubricating oil, diesel fuel, propane, oxygen, and acetlyene

A copy of the Hazardous Materials Inventory has been included in this section, which will provide more detailed information on the hazardous material inventory.

III. HEALTH AND SAFETY PLAN

The training and skills necessary to perform the operations and tasks specified in the closure plan do not go beyond the normal duties of a Western Forge & Flange Co. - Albany employee who is designated as a hazardous material and/or waste handler and has been employed in the process operations at Western Forge & Flange Co. - Albany. This excludes office personnel. Therefore, Western Forge & Flange Co. - Albany intends to perform all closure operations and tasks utilizing currently employed personnel.

A. ORGANIZATIONAL STRUCTURE

Key Personnel at Western Forge & Flange Co. - Albany

PRIMARY EMERGENCY COORDINATOR			
Name	Title	Tasks	Home Phone
Walter Pierce	President	1-13	(832) 585-4718
		Bus. Line	(281) 727-7001

ALTERNATE EMERGENCY COORDINATORS			
Name	Title	Tasks	Home Phone
Parwinder Gill	Director of Quality Assurance	1-12	(510) 487-4209
Mike Thornton	Plant Manager	1-12	(707) 553-9012

TASKS:

1. Approve an Evacuation	2. Call Fire Department and Direct Them
3. Utility Shut-off	4. Close All Valves
5. Close Doors After Everyone is Out	6. Seal Storm Drains
7. Check for spills in Tank Area	8. Check for spills in Chemical Storage Areas
9. Check for spills in Waste Storage Areas	10. Spill Clean-up Procedures
11. Inventory Placement and Separation	12. Manage Evacuation Point, Take Attendance
13. Provide Information to Media, Public Relations	

Principals**Name and Title**

Walter Pierce, President

Parwinder Gill, Director of Quality Assurance

Waste Handlers**Name and Title**

Mike Thornton, Plant Manager

Waste Supervisor:

Mike Thornton, Plant Manager

**Hazardous Material
Handlers****Name and Title**

Lawrence Potts, Forge Crew

Ben Sturm, Forge Crew

John Yasenchok, Forge Crew

Dave Gans, Forge Crew

Number of Employees:

5

Normal Hours of Operation:

Business Hours: 6:00 a.m. to 5:00 p.m.

First Shift 7 :00 a.m. to 3:30 p.m.

Second Shift NA

Third Shift NA

Weekends/Holidays no shift- occasionally as
needed. Usually 2-3 people there on the weekends.

B. SAFETY AND HEALTH HAZARD ANALYSIS

Western Forge & Flange Co. - Albany handles the following hazardous materials/wastes (please refer to the inventory included in Section II of this plan):

Hazardous Material	Hazard Identified
Propane	flammable
Acetylene	flammable
lubrication oil	combustible
diesel/ gasoline	flammable

C. EMPLOYEE TRAINING

Western Forge & Flange Co. - Albany has a training program that includes the following elements:

1. Right to Know training

All employees have been trained in the contents of the Hazardous Materials Management Plan, OSHA Hazard Communication, and the Hazardous Material Emergency Response Plan and Procedures. Subjects included:

MSDS

Hazardous Symbols

Protective Equipment

Hazardous Materials/Handling

Proposition 65

Basic Emergency Information

Emergency Response Procedures

Notification Procedures - Internal/External Reporting

Evacuation Procedures/Meeting Point

2. Hazardous Waste Training per Title 22 §66265.16

All employees involved in the management of hazardous waste have been trained within six months of hire and will not manage hazardous wastes in unsupervised positions until they have been trained. This training consists of classroom instruction containing information regarding contingency plan implementation and in-house waste management policies. Employees have also received on-the-job training by Western Forge & Flange Co. - Albany. Subjects included:

- Safe handling of hazardous wastes
- Emergency Response Procedures
- Emergency equipment and systems, where applicable
- Procedures for using, inspecting, repairing and replacing emergency and monitoring equipment
- Operation of automatic waste-feed-cutoff systems
- Use of communication and alarm systems
- Response to fires and explosions
- Response to groundwater contamination incidents
- Procedures for shutting down operations

3. Respirator training

All employees have been trained in the guidelines related to selection, maintenance, inspection, cleaning and storage of respiratory protective equipment. Subjects included:

- Respirator Policy
- Respirators Selected on Basis of Hazards
- Cleaning and Disinfection
- Storage
- Inspection
- Fit

All training has been documented by each employee signing a Training Sign-Off Sheet. These records are maintained by the Personnel Department.

Sample training programs administered by Chemical Data Management Systems are available onsite.

D. PERSONAL PROTECTIVE EQUIPMENT

1. Western Forge & Flange Co. - Albany provides for its employees the following personal protective equipment for their personal protection:

- ❖ Gloves
- ❖ safety glasses
- ❖ goggles
- ❖ boots
- ❖ respirators
- ❖ ear plugs
- ❖ Ear plugs
- ❖ Dust Masks in Shipping and Plant
- ❖ Welding Hood- Welding area

- ❖ These items are located

- ❖ Steel-toed boots- employees furnish their own.
- ❖ Respirators- in shipping dept. Cloth dust masks kept in plant.
All else issued individually.

2. A safety shower/eyewash station and fresh running water are also available in the following locations:

- ❖ • Refer to drawings. These are not plumbed, they are disposable bottles

3. A First Aid Kit is also available and is located E3, G15.

E. EMERGENCY RESPONSE PLAN

The emergency response/contingency plan is available onsite in the Hazardous Material Business and Management Plan and includes the following:

Basic Emergency Information and Emergency Response Procedures:

Body Contact with Chemicals

Gas Leakage

Other Spill

Unplanned Release of Hazardous Materials or Waste

Groundwater Contamination Incident

Explosion

Fire

Earthquake

Flood

Notification Procedures

Evacuation Procedures

IV. CLOSURE PLAN

A. REMOVAL OF HAZARDOUS MATERIALS

1. Remove all process chemicals from equipment and storage areas and pump into 55 gallons drums.
2. All hazardous materials will be transported by a licensed hazardous material hauler to a proper disposal site.

B. DECONTAMINATION AND REMOVAL OF EQUIPMENT

1. Equipment will be wasted down to remove all hazardous materials.
2. Pressure rinse to clean the process equipment.
3. Transport the equipment to the new facility.
4. Pressure washing and a floor scrub will be used to clean all floors.

C. DECONTAMINATION OF BUILDING MATERIALS

1. Floors that are visibly stained, or otherwise suspected of being contaminated with hazardous materials, will be triple-cleaned using a floor scrubber or power washers. All cleaning liquids generated from the process will be collected and disposed of as hazardous waste.
2. The walls of the building that were exposed to hazardous materials or waste will be decontaminated by removing all hazardous waste and residues.
3. The sumps will be cleaned to remove any debris and hazardous materials.
4. All pits around the forging hammers will have the anvils removed. The anvils are located in large pits (At least 10 feet deep by 10 foot by 10 foot sides) and may have some oils that have seeped into the pits and possibly into the ground. Sampling will be conducted at each of these locations.

D. WASTEWATER TREATMENT AND WASTE DISPOSAL

The facility does not discharge industrial wastewater and does not have a wastewater treatment system.

All hazardous waste will be disposed of in accordance with the rules and regulations of the Department of Health Services, Cal/EPA, the San Francisco Regional Water

Quality Control Board, the Bay Area Air Quality Management District, U.S. EPA, and any other local, State, or Federal agency requirements.

All receipts for the disposal of hazardous waste will be kept and made available for inspection. An index identifying the pieces of equipment sold will be maintained if identification is unclear from the receipts.

E. FACILITY DESCRIPTION/EQUIPMENT LOCATIONS

The following are descriptions of the each of the buildings at the site with a list of equipment that may need to be decontaminated or may represent contaminate areas.

Location	Description	Clean Up Actions
Facility Office	Main office	None
Shipping	Shipping	Power washing
Machine Shop	Machine Shop	Power washing and sampling. Waste oil to be removed
Plant Office & Storage Bldg	Non hazardous	None
Forge Building	Furnaces, forging hammers, waste oil, and saws	Power washing and sampling. Waste oil to be removed

F. STORMWATER SEWERS

All stormwater drains will be inspected for the presences of contamination. If there is the presence of any contamination the stormwater sewer lines, they will be cleaned out using industrial steam cleaning methods.

G. ASBESTOS

Any building demolition that is planned should be preceded with asbestos sampling to determine if there is the presence of asbestos.

H. STORAGE TANKS

All above ground storage tanks will be disposed of as hazardous materials.

I. REPORTING

1. Any additional recommendations by the Department of Toxic Substances Control or the lead agency will be promptly addressed.
2. The EPA will be contacted to deactivate the current permit for the present site.
3. The Air Quality Management District will be contracted to deactivate any current permits.
4. A final Closure Report will be prepared and submitted with supporting documentation after all closure activities have been completed.

V. SAMPLING PLAN

A. PROPOSED SAMPLE LOCATIONS

1. Core sampling will be performed with attention to areas where cracks or etching is found. Core samples locations will be identified. where sampling should be performed for oil and grease, during the Alameda County Department of Environmental Health walk-around. change

B. SAMPLE COLLECTION AND PRESERVATION

1. Core samples will be taken by Chemical Data Management Systems. Samplers' names will be so noted in the sample logbook. EPA QA/QC procedures are followed.
2. Sampling procedure:
 - a. Core samples
 1. Will be taken with clean Teflon or brass sleeves
 2. The sleeves will be put into a clean plastic sample bag; no preservation required
 - b. The sample containers will be capped and labeled with the sample description, date and time of the collection.

C. CHAIN-OF-CUSTODY

This record includes the following:

1. Name of the company
2. Samplers' signatures
3. Receivers' signatures
4. Unique identification number
5. Sample location
6. Date and time of collection
7. Type of sample
8. Number of containers and particular container's sequence number
9. Analyses required

When custody of a sample is transferred, the person relinquishing the samples must sign the record. The person receiving the sample acknowledges receipt by signing the record also.

A sample chain-of-custody form is contained at the end of this section.

D. ANALYSIS

1. Analysis Parameters

Oil and Grease

2. Samples

Core samples

Analysis following EPA method 6010 for metals.

Test Methods for Evaluating Solid Waste, Physical/Chemical Methods, EPA SW-846, 2nd edition, revised April 1985 and 3rd edition, September, 1986

E. PERSON RESPONSIBLE FOR SAMPLE COLLECTION

CDMS James N. Carro, Consultant

Job title: James N. Carro, Registered Environmental Assessor;
Chemical Data Management Systems

F. LABORATORY INFORMATION

STL- Pleasanton

1220 Quarry Lane

Pleasanton, CA 94566

Western Forge & Flange Co. - Albany

CHAIN OF CUSTODY RECORD

SAMPLERS *(Signature)*

SAMPLE NUMBER	SAMPLE LOCATION	DATE	TIME	SAMPLE TYPE		NO. OF CONTAINERS	ANALYSES REQUIRED
				COMP	GRAB		

Relinquished by: <i>(Signature)</i>	Received by: <i>(Signature)</i>	Date	Time
Relinquished by: <i>(Signature)</i>	Received by: <i>(Signature)</i>	Date	Time
Relinquished by: <i>(Signature)</i>	Received by: <i>(Signature)</i>	Date	Time
Relinquished by: <i>(Signature)</i>	Received for Laboratory by: <i>(Signature)</i>	Date	Time

Method of Shipment:

Distribution: Original - Accompany Samples

1 copy - Keep on File

VI. PROPOSED CLOSURE SCHEDULE

A. DATE OF REMOVAL OF INVENTORY: AUGUST, 2007

B. DATE OF REMOVAL OF EQUIPMENT: AUGUST, 2007

C. DATE OF FACILITY DECONTAMINATION: SEPTEMBER, 2007

D. DATE OF FACILITY SAMPLING: SEPTEMBER, 2007

E. DATE OF CLOSURE OF THE FACILITY: OCTOBER, 2007

VII. CONTRACTORS

Firm contracted to perform decontamination:

Chemical Data Management Systems

6515 Trinity Court, Suite #201, Dublin, CA 94568

James N. Carro

(925) 551-7300

Firm to be contacted to prepare the Closure Plan:

Chemical Data Management Systems

6515 Trinity Court, Suite #201, Dublin, CA 94568

James N. Carro

(925) 551-7300

Firm contracted to transport hazardous materials and equipment (will not transport any hazardous waste):

To be Determined

Destination of materials and equipment:

To be Determined

VIII. COORDINATION WITH OTHER AGENCIES

A. LOCAL AGENCY WITH JURISDICTION

Western Forge and Flange will coordinate all closure activities through the Alameda County Department of Environmental Health, Hazardous Materials Division.

B. BUILDING DEPARTMENT

The Building Department requires property owner and/or demolishing contractor to obtain a building permit for the demolition.

C. OTHER AGENCIES

The following agencies will be notified of the closure by letter or other document as required:

Alameda County Department of Environmental Health
Hazardous Material Division
1131 Harbor Bay Parkway, Room 250
Alameda, CA 94502

Easy Bay Municipal Utilities District
P.O. Box 24055
Oakland, CA 94623
(510) 287-1409

City of Albany Street Department - if the spill may affect storm drains.

US EPA Region 9
PRC-RCRA Notification Section
75 Hawthorne Street
WST-6 Tetra Tech
San Francisco, CA 94105
(415) 495-8895

Cal EPA Headquarters
Department of Toxic Substances Control
P.O. Box 806
Sacramento, CA 95812-0806
(916) 324-1826

Region 2
Department of Toxic Substances Control
Site Mitigation Branch
2151 Berkeley Way, Anx 9
Berkeley, CA 94704
(510) 540-2122

State Board of Equalization
Excise Tax Division
P.O. Box 942879
Sacramento, CA 94279-0001
MIC 57
(916) 299-6930

Bay Area Air Quality Management District
939 Ellis Street
San Francisco, CA 94109
(415) 771-6000

Regional Water Quality Control Board (to close Storm Water permit)
File Notice of Termination form

IX. CERTIFICATIONS

Owner Certification

I certify that no evidence of a release of hazardous waste or hazardous substances has been found and none of the signatories has any knowledge of any release of hazardous waste or hazardous constituents at the facility.

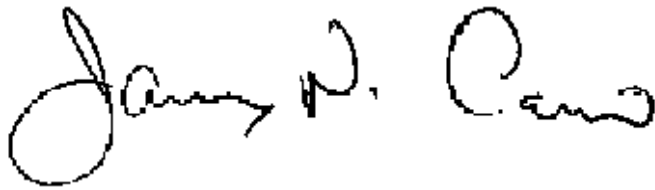
I declare under penalty of perjury that the above information is correct to the best of my knowledge. If there is any change, which would materially affect the above information, I will notify the Alameda County Department of Environmental Health.

Western Forge & Flange Co. - Albany

Walter Pierce, President

Date

Registered Environmental Assessors Certification



July 9, 2007

James N. Carro, REA I-03698

Date

X. NOTIFICATION LETTERS

Date: _____

US EPA Region 9
PRC-RCRA Notification Section
75 Hawthorne Street
WST-6 Tetra Tech
San Francisco, CA 94105

Subject: Closure of Western Forge & Flange Co. - Albany

We hereby notify your agency that Western Forge & Flange Co. - Albany is ceasing operations at their current location effective October 1, 2007.

Their current location is:

Western Forge & Flange Co. - Albany
540 Cleveland Avenue
Albany, CA 94706

Their EPA Identification Number is CAD 981 371 396.

Their State Board of Equalization Account Number is HAHQ 36-011944.

Please advise them of any additional forms or notification that need to be submitted.

Please return the enclosed letter as proof of receipt of this letter.

Sincerely,

Walter Pierce, President
Western Forge & Flange Co.

Date: _____

Walter Pierce
Western Forge & Flange Co.
780 Reed Street
Santa Clara, CA 95050

Dear Walter Pierce:

We are sending you this letter to verify that we have received your letter dated _____
regarding the closure of:

Western Forge & Flange Co. - Albany
540 Cleveland Avenue
Albany, CA 94706

Sincerely,

Stamp or Name

US EPA Region 9
PRC-RCRA Notification Section
75 Hawthorne Street
WST-6 Tetra Tech
San Francisco, CA 94105

Date: _____

Cal EPA Headquarters
Department of Toxic Substances Control
P.O. Box 806
Sacramento, CA 95812-0806

Subject: Closure of Western Forge & Flange Co. - Albany

We hereby notify your agency that Western Forge & Flange Co. - Albany is ceasing operations at their current location effective October 1, 2007.

Their current location is:

Western Forge & Flange Co. - Albany
540 Cleveland Avenue
Albany, CA 94706

Their EPA Identification Number is CAD 981 371 396.

Their State Board of Equalization Account Number is HAHQ 36-011944.

Please advise them of any additional forms or notification that need to be submitted.

Please return the enclosed letter as proof of receipt of this letter.

Sincerely,

Walter Pierce, President
Western Forge & Flange Co.

Date: _____

Walter Pierce
Western Forge & Flange Co.
780 Reed Street
Santa Clara, CA 95050

Dear Walter Pierce:

We are sending you this letter to verify that we have received your letter dated _____
regarding the closure of:

Western Forge & Flange Co. - Albany
540 Cleveland Avenue
Albany, CA 94706

Sincerely,

Stamp or Name

Cal EPA Headquarters
Department of Toxic Substances Control
P.O. Box 806
Sacramento, CA 95812-0806

Date: _____

Region 2

Department of Toxic Substances Control

Site Mitigation Branch

2151 Berkeley Way, Anx 9

Berkeley, CA 94704

Subject: Closure of Western Forge & Flange Co. - Albany

We hereby notify your agency that Western Forge & Flange Co. - Albany is ceasing operations at their current location effective October 1, 2007.

Their current location is:

Western Forge & Flange Co. - Albany
540 Cleveland Avenue
Albany, CA 94706

Their EPA Identification Number is CAD 981 371 396.

Their State Board of Equalization Account Number is HAHQ 36-011944.

Please advise them of any additional forms or notification that need to be submitted.

Please return the enclosed letter as proof of receipt of this letter.

Sincerely,

Walter Pierce, President
Western Forge & Flange Co.

Date: _____

Walter Pierce
Western Forge & Flange Co.
780 Reed Street
Santa Clara, CA 95050

Dear Walter Pierce:

We are sending you this letter to verify that we have received your letter dated _____
regarding the closure of:

Western Forge & Flange Co. - Albany
540 Cleveland Avenue
Albany, CA 94706

Sincerely,

Stamp or Name

Region 2
Department of Toxic Substances Control
Site Mitigation Branch
2151 Berkeley Way, Anx 9
Berkeley, CA 94704

Date: _____

State Board of Equalization
Excise Tax Division
P.O. Box 942879
Sacramento, CA 94279-0001
MIC 57

Subject: Closure of Western Forge & Flange Co. - Albany

We hereby notify your agency that Western Forge & Flange Co. - Albany is ceasing operations at their current location effective October 1, 2007.

Their current location is:

Western Forge & Flange Co. - Albany
540 Cleveland Avenue
Albany, CA 94706

Their EPA Identification Number is CAD 981 371 396.

Their State Board of Equalization Account Number is HAHQ 36-011944.

Please advise them of any additional forms or notification that need to be submitted.

Please return the enclosed letter as proof of receipt of this letter.

Sincerely,

Walter Pierce, President
Western Forge & Flange Co.

Date: _____

Walter Pierce
Western Forge & Flange Co.
780 Reed Street
Santa Clara, CA 95050

Dear Walter Pierce:

We are sending you this letter to verify that we have received your letter dated _____
regarding the closure of:

Western Forge & Flange Co. - Albany
540 Cleveland Avenue
Albany, CA 94706

Sincerely,

Stamp or Name

State Board of Equalization
Excise Tax Division
P.O. Box 942879
Sacramento, CA 94279-0001
MIC 57

Date: _____

East Bay Municipal Utilities District
P.O. Box 24055
Oakland, CA 94623

Subject: Closure of Western Forge & Flange Co. - Albany

We hereby notify your agency that Western Forge & Flange Co. - Albany is ceasing operations at their current location effective October 1, 2007.

Their current location is:

Western Forge & Flange Co. - Albany
540 Cleveland Avenue
Albany, CA 94706

Their EPA Identification Number is CAD 981 371 396.

Their State Board of Equalization Account Number is HAHQ 36-011944.

Please advise them of any additional forms or notification that need to be submitted.

Please return the enclosed letter as proof of receipt of this letter.

Sincerely,

Walter Pierce, President
Western Forge & Flange Co.

Date: _____

Walter Pierce
Western Forge & Flange Co.
780 Reed Street
Santa Clara, CA 95050

Dear Walter Pierce:

We are sending you this letter to verify that we have received your letter dated _____
regarding the closure of:

Western Forge & Flange Co. - Albany
540 Cleveland Avenue
Albany, CA 94706

Sincerely,

Stamp or Name

East Bay Municipal Utilities District
P.O. Box 24055
Oakland, CA 94623

Date: _____

Alameda County Department of Environmental Health
1131 Harbor Bay Parkway
Room 250
Alameda, CA 94502

Subject: Closure of Western Forge & Flange Co. - Albany

We hereby notify your agency that Western Forge & Flange Co. - Albany is ceasing operations at their current location effective October 1, 2007.

Their current location is:

Western Forge & Flange Co. - Albany
540 Cleveland Avenue
Albany, CA 94706

Their EPA Identification Number is CAD 981 370 396.

Their State Board of Equalization Account Number is HAHQ 36-011944.

Please advise them of any additional forms or notification that need to be submitted.

Please return the enclosed letter as proof of receipt of this letter.

Sincerely,

Walter Pierce, President
Western Forge & Flange Co.

Date: _____

Walter Pierce
Western Forge & Flange Co.
780 Reed Street
Santa Clara, CA 95050

Dear Walter Pierce:

We are sending you this letter to verify that we have received your letter dated _____
regarding the closure of:

Western Forge & Flange Co. - Albany
540 Cleveland Avenue
Albany, CA 94706

Sincerely,

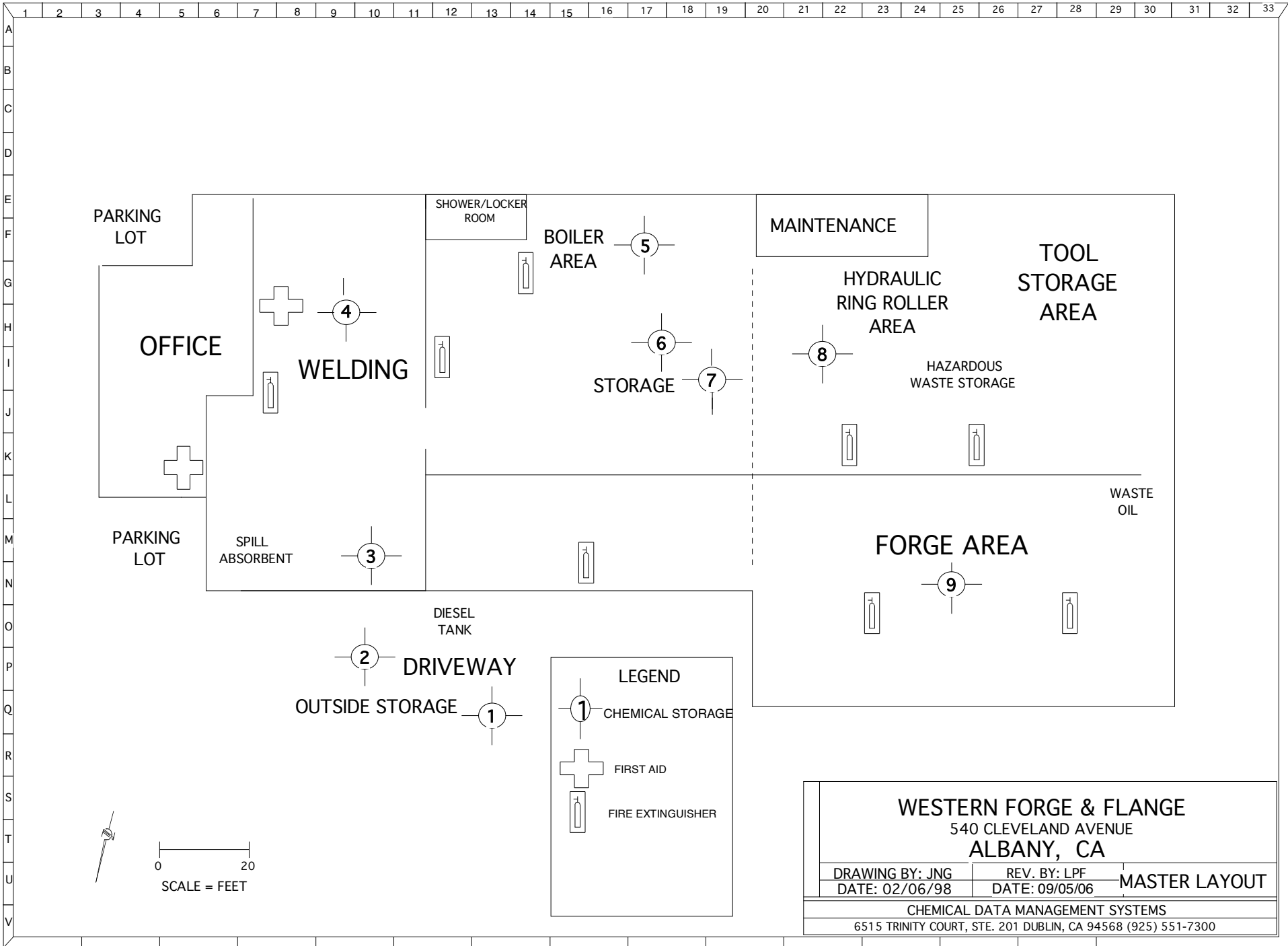
Stamp or Name

Alameda County Department of Environmental Health
1131 Harbor Bay Parkway
Room 250
Alameda, CA 94502

Appendix

- I. Facility and Hazardous Material Storage Drawing & Sampling Areas
- II. Hazardous Material Inventory
- III. Proposed Sampling Drawing
- IV. Disposition of Materials and Equipment
- V. Closure Notification Form
- VI. Wipe Sampling Protocol
- VII. Protocol for Soil Boring Investigations and Groundwater Sampling

I. Facility and Hazardous Material Storage Drawing



II. Hazardous Material Inventory

Please refer to the following pages.

ALAMEDA COUNTY DEPARTMENT OF ENVIRONMENTAL HEALTH
CERTIFIED UNIFIED PROGRAM AGENCY (CUPA)
1131 Harbor Bay Parkway, Alameda, CA 94502-6577 Phone (510) 567-6700 Fax (510) 337-9335

HAZARDOUS MATERIALS INVENTORY - CHEMICAL DESCRIPTION

(One page per material per building or area)

ADD DELETE REVISE

200

Page 1 of 15

I. FACILITY INFORMATION

BUSINESS NAME (Same as FACILITY NAME or DBA - Doing Business As) 3
 Western Forge & Flange Co.

CHEMICAL LOCATION 201 CHEMICAL LOCATION CONFIDENTIAL EPCRA 202
 Forge Area Yes No

FACILITY ID# 1 MAP # 203 GRID # 204
 Master Layout O25

II. CHEMICAL INFORMATION

Chemical Name 205 TRADE SECRET Yes No 206
 Canola Frying Shortening If subject to EPCRA, refer to instructions

COMMON NAME 207 EHS* 208
 Canola Frying Shortening Yes No

CAS # 209 *If EHS is "Yes", all amounts below must be in lbs.
 MIXTURE

FIRE CODE HAZARD CLASSES (Complete if required by CUPA) 210
 CLASS III-A combustible liquid

HAZARDOUS MATERIAL TYPE (Check one item only) a. PURE b. MIXTURE c. WASTE 211 RADIOACTIVE Yes No 212 CURIES 213
 NA

PHYSICAL STATE (Check one item only) a. SOLID b. LIQUID c. GAS 214 LARGEST CONTAINER 215
 55

FED HAZARD CATEGORIES (Check all that apply) a. FIRE b. REACTIVE c. PRESSURE RELEASE d. ACUTE HEALTH e. CHRONIC HEALTH 216

AVERAGE DAILY AMOUNT STORED ON-SITE 217 MAXIMUM DAILY AMOUNT STORED ON-SITE 218 ANNUAL WASTE AMOUNT 219 STATE WASTE CODE 220
 110 165 NA NA

UNITS* (Check one item only) a. GALLONS b. CUBIC FEET c. POUNDS d. TONS 221 DAYS ON SITE 222
 *If EHS amount must be in pounds. 365

STORAGE CONTAINER 223
 a. ABOVEGROUND TANK e. PLASTIC/NONMETALLIC DRUM i. FIBER DRUM m. GLASS BOTTLE q. RAIL CAR
 b. UNDERGROUND TANK f. CAN j. BAG n. PLASTIC BOTTLE r. OTHER
 c. TANK INSIDE BUILDING g. CARBOY k. BOX o. TOTE BIN
 d. STEEL DRUM h. SILO l. CYLINDER p. TANK WAGON

STORAGE PRESSURE a. AMBIENT b. ABOVE AMBIENT c. BELOW AMBIENT 224

STORAGE TEMPERATURE a. AMBIENT b. ABOVE AMBIENT c. BELOW AMBIENT d. CRYOGENIC 225

%WT	HAZARDOUS COMPONENT (For mixture or waste only)	EHS	CAS #
1 100 226	VEGETABLE FAT 227	<input type="checkbox"/> Yes <input checked="" type="checkbox"/> No 228	NA 229
2 230	231	<input type="checkbox"/> Yes <input type="checkbox"/> No 232	233
3 234	235	<input type="checkbox"/> Yes <input type="checkbox"/> No 236	237
4 238	239	<input type="checkbox"/> Yes <input type="checkbox"/> No 240	241
5 242	243	<input type="checkbox"/> Yes <input type="checkbox"/> No 244	245

If more hazardous components are present at greater than 1% by weight if non-carcinogenic, or 0.1% by weight if carcinogenic, attach additional sheets of paper indicating the required information.

ADDITIONAL LOCALLY COLLECTED INFORMATION: 246

If EPCRA, Please Sign Here

ALAMEDA COUNTY DEPARTMENT OF ENVIRONMENTAL HEALTH
CERTIFIED UNIFIED PROGRAM AGENCY (CUPA)
 1131 Harbor Bay Parkway, Alameda, CA 94502-6577 Phone (510) 567-6700 Fax (510) 337-9335

HAZARDOUS MATERIALS INVENTORY - CHEMICAL DESCRIPTION

(One page per material per building or area)

ADD DELETE REVISE

200

Page 2 of 15

I. FACILITY INFORMATION

BUSINESS NAME (Same as FACILITY NAME or DBA - Doing Business As) 3
 Western Forge & Flange Co.

CHEMICAL LOCATION 201 CHEMICAL LOCATION CONFIDENTIAL EPCRA 202
 Forklifts, Driveway Yes No

FACILITY ID# 1 MAP # 203 GRID # 204
 Master Layout P9

II. CHEMICAL INFORMATION

Chemical Name 205 TRADE SECRET Yes No 206
 PROPANE If subject to EPCRA, refer to instructions

COMMON NAME 207 EHS* 208
 Propane Yes No

CAS # 209 *If EHS is "Yes", all amounts below must be in lbs.

FIRE CODE HAZARD CLASSES (Complete if required by CUPA) 210

HAZARDOUS MATERIAL TYPE (Check one item only) a. PURE b. MIXTURE c. WASTE 211 RADIOACTIVE Yes No 212 CURIES 213
 Flammable gas NA

PHYSICAL STATE (Check one item only) a. SOLID b. LIQUID c. GAS 214 LARGEST CONTAINER 215
 7.5

FED HAZARD CATEGORIES (Check all that apply) a. FIRE b. REACTIVE c. PRESSURE RELEASE d. ACUTE HEALTH e. CHRONIC HEALTH 216

AVERAGE DAILY AMOUNT STORED ON-SITE 217 MAXIMUM DAILY AMOUNT STORED ON-SITE 218 ANNUAL WASTE AMOUNT 219 STATE WASTE CODE 220
 50 75 NA NA

UNITS* (Check one item only) a. GALLONS b. CUBIC FEET c. POUNDS d. TONS 221 DAYS ON SITE 222
 *If EHS amount must be in pounds. 365

STORAGE CONTAINER 223
 a. ABOVEGROUND TANK e. PLASTIC/NONMETALLIC DRUM i. FIBER DRUM m. GLASS BOTTLE q. RAIL CAR
 b. UNDERGROUND TANK f. CAN j. BAG n. PLASTIC BOTTLE r. OTHER
 c. TANK INSIDE BUILDING g. CARBOY k. BOX o. TOTE BIN
 d. STEEL DRUM h. SILO l. CYLINDER p. TANK WAGON

STORAGE PRESSURE 224
 a. AMBIENT b. ABOVE AMBIENT c. BELOW AMBIENT

STORAGE TEMPERATURE 225
 a. AMBIENT b. ABOVE AMBIENT c. BELOW AMBIENT d. CRYOGENIC

%WT	HAZARDOUS COMPONENT (For mixture or waste only)	EHS	CAS #
1 92 226	PROPANE 227	<input type="checkbox"/> Yes <input checked="" type="checkbox"/> No 228	74-98-6 229
2 5 230	PROPYLENE OR PROPENE OR 1-PROPENE 231	<input type="checkbox"/> Yes <input checked="" type="checkbox"/> No 232	115-07-1 233
3 3 234	BUTANE 235	<input type="checkbox"/> Yes <input checked="" type="checkbox"/> No 236	106-97-8 237
4 238	239	<input type="checkbox"/> Yes <input type="checkbox"/> No 240	241
5 242	243	<input type="checkbox"/> Yes <input type="checkbox"/> No 244	245

If more hazardous components are present at greater than 1% by weight if non-carcinogenic, or 0.1% by weight if carcinogenic, attach additional sheets of paper indicating the required information.

ADDITIONAL LOCALLY COLLECTED INFORMATION: 246

If EPCRA, Please Sign Here

ALAMEDA COUNTY DEPARTMENT OF ENVIRONMENTAL HEALTH
CERTIFIED UNIFIED PROGRAM AGENCY (CUPA)
 1131 Harbor Bay Parkway, Alameda, CA 94502-6577 Phone (510) 567-6700 Fax (510) 337-9335

HAZARDOUS MATERIALS INVENTORY - CHEMICAL DESCRIPTION

(One page per material per building or area)

ADD DELETE REVISE

200

Page 3 of 15

I. FACILITY INFORMATION

BUSINESS NAME (Same as FACILITY NAME or DBA - Doing Business As) 3
 Western Forge & Flange Co.

CHEMICAL LOCATION 201 CHEMICAL LOCATION CONFIDENTIAL EPCRA 202
 Welding Yes No

FACILITY ID# 1 MAP # 203 GRID # 204
 Master Layout H9

II. CHEMICAL INFORMATION

Chemical Name 205 TRADE SECRET Yes No 206
 OXYGEN
 If subject to EPCRA, refer to instructions

COMMON NAME 207 EHS* 208
 Oxygen Yes No

CAS # 209 *If EHS is "Yes", all amounts below must be in lbs.
 7782-44-7

FIRE CODE HAZARD CLASSES (Complete if required by CUPA) 210
 Oxidizer Nonflammable Gas

HAZARDOUS MATERIAL TYPE (Check one item only) a. PURE b. MIXTURE c. WASTE 211 RADIOACTIVE Yes No 212 CURIES 213
 NA

PHYSICAL STATE (Check one item only) a. SOLID b. LIQUID c. GAS 214 LARGEST CONTAINER 215
 282

FED HAZARD CATEGORIES (Check all that apply) a. FIRE b. REACTIVE c. PRESSURE RELEASE d. ACUTE HEALTH e. CHRONIC HEALTH 216

AVERAGE DAILY AMOUNT STORED ON-SITE 217 MAXIMUM DAILY AMOUNT STORED ON-SITE 218 ANNUAL WASTE AMOUNT 219 STATE WASTE CODE 220
 423 846 NA NA

UNITS* (Check one item only) a. GALLONS b. CUBIC FEET c. POUNDS d. TONS 221 DAYS ON SITE 222
 *If EHS amount must be in pounds. 365

STORAGE CONTAINER 223
 a. ABOVEGROUND TANK e. PLASTIC/NONMETALLIC DRUM i. FIBER DRUM m. GLASS BOTTLE q. RAIL CAR
 b. UNDERGROUND TANK f. CAN j. BAG n. PLASTIC BOTTLE r. OTHER
 c. TANK INSIDE BUILDING g. CARBOY k. BOX o. TOTE BIN
 d. STEEL DRUM h. SILO l. CYLINDER p. TANK WAGON

STORAGE PRESSURE 224
 a. AMBIENT b. ABOVE AMBIENT c. BELOW AMBIENT

STORAGE TEMPERATURE 225
 a. AMBIENT b. ABOVE AMBIENT c. BELOW AMBIENT d. CRYOGENIC

%WT	HAZARDOUS COMPONENT (For mixture or waste only)	EHS	CAS #
1 100	OXYGEN	<input type="checkbox"/> Yes <input checked="" type="checkbox"/> No	7782-44-7
2		<input type="checkbox"/> Yes <input type="checkbox"/> No	
3		<input type="checkbox"/> Yes <input type="checkbox"/> No	
4		<input type="checkbox"/> Yes <input type="checkbox"/> No	
5		<input type="checkbox"/> Yes <input type="checkbox"/> No	

If more hazardous components are present at greater than 1% by weight if non-carcinogenic, or 0.1% by weight if carcinogenic, attach additional sheets of paper indicating the required information.

ADDITIONAL LOCALLY COLLECTED INFORMATION: 246

If EPCRA, Please Sign Here

ALAMEDA COUNTY DEPARTMENT OF ENVIRONMENTAL HEALTH
CERTIFIED UNIFIED PROGRAM AGENCY (CUPA)
 1131 Harbor Bay Parkway, Alameda, CA 94502-6577 Phone (510) 567-6700 Fax (510) 337-9335

HAZARDOUS MATERIALS INVENTORY - CHEMICAL DESCRIPTION

(One page per material per building or area)

ADD DELETE REVISE

200

Page 4 of 15

I. FACILITY INFORMATION

BUSINESS NAME (Same as FACILITY NAME or DBA - Doing Business As) 3

Western Forge & Flange Co.

CHEMICAL LOCATION 201 CHEMICAL LOCATION CONFIDENTIAL EPCRA 202

Outside Storage Yes No

FACILITY ID# 1 MAP # 203 GRID # 204

II. CHEMICAL INFORMATION

Chemical Name 205 TRADE SECRET Yes No 206

Diesel Fuel #2 If subject to EPCRA, refer to instructions

COMMON NAME 207 EHS* 208

Chevron LS Diesel 2 Yes No

CAS # 209 *If EHS is "Yes", all amounts below must be in lbs.

68476-34-6

FIRE CODE HAZARD CLASSES (Complete if required by CUPA) 210

CLASS II combustible liquid Irritant liquid

HAZARDOUS MATERIAL TYPE (Check one item only) a. PURE b. MIXTURE c. WASTE 211 RADIOACTIVE Yes No 212 CURIES 213

PHYSICAL STATE (Check one item only) a. SOLID b. LIQUID c. GAS 214 LARGEST CONTAINER 215

FED HAZARD CATEGORIES (Check all that apply) a. FIRE b. REACTIVE c. PRESSURE RELEASE d. ACUTE HEALTH e. CHRONIC HEALTH 216

AVERAGE DAILY AMOUNT STORED ON-SITE 217 MAXIMUM DAILY AMOUNT STORED ON-SITE 218 ANNUAL WASTE AMOUNT 219 STATE WASTE CODE 220

600 900 NA NA

UNITS* a. GALLONS b. CUBIC FEET c. POUNDS d. TONS 221 DAYS ON SITE 222

(Check one item only) *If EHS amount must be in pounds. 365

STORAGE CONTAINER 223

a. ABOVEGROUND TANK e. PLASTIC/NONMETALLIC DRUM i. FIBER DRUM m. GLASS BOTTLE q. RAIL CAR

b. UNDERGROUND TANK f. CAN j. BAG n. PLASTIC BOTTLE r. OTHER

c. TANK INSIDE BUILDING g. CARBOY k. BOX o. TOTE BIN

d. STEEL DRUM h. SILO l. CYLINDER p. TANK WAGON

STORAGE PRESSURE a. AMBIENT b. ABOVE AMBIENT c. BELOW AMBIENT 224

STORAGE TEMPERATURE a. AMBIENT b. ABOVE AMBIENT c. BELOW AMBIENT d. CRYOGENIC 225

%WT	HAZARDOUS COMPONENT (For mixture or waste only)	EHS	CAS #
1 NS 226	HDS DISTILLATE, MIDDLE 227	<input type="checkbox"/> Yes <input checked="" type="checkbox"/> No 228	64742-80-9 229
2 NS 230	GAS OIL, LIGHT 231	<input type="checkbox"/> Yes <input checked="" type="checkbox"/> No 232	64741-44-2 233
3 NS 234	KEROSENE 235	<input type="checkbox"/> Yes <input checked="" type="checkbox"/> No 236	8008-20-6 237
4 NS 238	HYDRODESULFURIZED KEROSENE 239	<input type="checkbox"/> Yes <input checked="" type="checkbox"/> No 240	64742-81-0 241
5 NS 242	CAT CRACKED DISTILLATE, LIGHT 243	<input type="checkbox"/> Yes <input checked="" type="checkbox"/> No 244	64741-59-9 245

If more hazardous components are present at greater than 1% by weight if non-carcinogenic, or 0.1% by weight if carcinogenic, attach additional sheets of paper indicating the required information.

ADDITIONAL LOCALLY COLLECTED INFORMATION: 246

If EPCRA, Please Sign Here

ALAMEDA COUNTY DEPARTMENT OF ENVIRONMENTAL HEALTH
CERTIFIED UNIFIED PROGRAM AGENCY (CUPA)
1131 Harbor Bay Parkway, Alameda, CA 94502-6577 Phone (510) 567-6700 Fax (510) 337-9335

HAZARDOUS MATERIALS INVENTORY - CHEMICAL DESCRIPTION

(One page per material per building or area)

ADD DELETE REVISE

200

Page 5 of 15

I. FACILITY INFORMATION

BUSINESS NAME (Same as FACILITY NAME or DBA - Doing Business As) 3

Western Forge & Flange Co.

CHEMICAL LOCATION 201

Hydraulic/ Ring Roller Area

CHEMICAL LOCATION CONFIDENTIAL EPCRA 202

Yes No

FACILITY ID# 1

MAP # 203

GRID # 204

Master Layout

121

II. CHEMICAL INFORMATION

Chemical Name 205

Chevron ISO 32 Hydraulic Oil

TRADE SECRET Yes No 206

If subject to EPCRA, refer to instructions

COMMON NAME 207

Chevron ISO 32 Hydraulic Oil

EHS* Yes No 208

CAS # 209

MIXTURE

*If EHS is "Yes", all amounts below must be in lbs.

FIRE CODE HAZARD CLASSES (Complete if required by CUPA) 210

CLASS III-B combustible liquid Irritant liquid

HAZARDOUS MATERIAL TYPE (Check one item only) 211

a. PURE b. MIXTURE c. WASTE

RADIOACTIVE 212

Yes No

CURIES NA 213

PHYSICAL STATE (Check one item only) 214

a. SOLID b. LIQUID c. GAS

LARGEST CONTAINER 215

55

FED HAZARD CATEGORIES (Check all that apply) 216

a. FIRE b. REACTIVE c. PRESSURE RELEASE d. ACUTE HEALTH e. CHRONIC HEALTH

AVERAGE DAILY AMOUNT STORED ON-SITE 217

110

MAXIMUM DAILY AMOUNT STORED ON-SITE 218

165

ANNUAL WASTE AMOUNT 219

NA

STATE WASTE CODE 220

NA

UNITS* 221

(Check one item only)

a. GALLONS b. CUBIC FEET c. POUNDS d. TONS

*If EHS amount must be in pounds.

DAYS ON SITE 222

365

STORAGE CONTAINER 223

a. ABOVEGROUND TANK e. PLASTIC/NONMETALLIC DRUM i. FIBER DRUM m. GLASS BOTTLE q. RAIL CAR
 b. UNDERGROUND TANK f. CAN j. BAG n. PLASTIC BOTTLE r. OTHER
 c. TANK INSIDE BUILDING g. CARBOY k. BOX o. TOTE BIN
 d. STEEL DRUM h. SILO l. CYLINDER p. TANK WAGON

STORAGE PRESSURE 224

a. AMBIENT b. ABOVE AMBIENT c. BELOW AMBIENT

STORAGE TEMPERATURE 225

a. AMBIENT b. ABOVE AMBIENT c. BELOW AMBIENT d. CRYOGENIC

%WT	HAZARDOUS COMPONENT (For mixture or waste only)	EHS	CAS #
1 99	BASE OIL	<input type="checkbox"/> Yes <input checked="" type="checkbox"/> No	64741884
2 <1	ADDITIVES	<input type="checkbox"/> Yes <input checked="" type="checkbox"/> No	NA
3		<input type="checkbox"/> Yes <input type="checkbox"/> No	
4		<input type="checkbox"/> Yes <input type="checkbox"/> No	
5		<input type="checkbox"/> Yes <input type="checkbox"/> No	

If more hazardous components are present at greater than 1% by weight if non-carcinogenic, or 0.1% by weight if carcinogenic, attach additional sheets of paper indicating the required information.

ADDITIONAL LOCALLY COLLECTED INFORMATION: 246

If EPCRA, Please Sign Here

ALAMEDA COUNTY DEPARTMENT OF ENVIRONMENTAL HEALTH
CERTIFIED UNIFIED PROGRAM AGENCY (CUPA)
1131 Harbor Bay Parkway, Alameda, CA 94502-6577 Phone (510) 567-6700 Fax (510) 337-9335

HAZARDOUS MATERIALS INVENTORY - CHEMICAL DESCRIPTION

(One page per material per building or area)

ADD DELETE REVISE

200

Page 6 of 15

I. FACILITY INFORMATION

BUSINESS NAME (Same as FACILITY NAME or DBA - Doing Business As) 3
 Western Forge & Flange Co.

CHEMICAL LOCATION 201 CHEMICAL LOCATION CONFIDENTIAL EPCRA 202
 Forge Area Yes No

FACILITY ID# 1 MAP # 203 GRID # 204
 Master Layout O25

II. CHEMICAL INFORMATION

Chemical Name 205 TRADE SECRET Yes No 206
 Chevron ISO 460 Cylinder Oil
 If subject to EPCRA, refer to instructions

COMMON NAME 207 EHS* 208
 Chevron ISO 460 Cylinder Oil W Yes No

CAS # 209 *If EHS is "Yes", all amounts below must be in lbs.
 MIXTURE

FIRE CODE HAZARD CLASSES (Complete if required by CUPA) 210
 CLASS III-A combustible liquid Irritant liquid

HAZARDOUS MATERIAL TYPE (Check one item only) a. PURE b. MIXTURE c. WASTE 211 RADIOACTIVE Yes No 212 CURIES 213
 NA

PHYSICAL STATE (Check one item only) a. SOLID b. LIQUID c. GAS 214 LARGEST CONTAINER 215
 55

FED HAZARD CATEGORIES (Check all that apply) a. FIRE b. REACTIVE c. PRESSURE RELEASE d. ACUTE HEALTH e. CHRONIC HEALTH 216

AVERAGE DAILY AMOUNT STORED ON-SITE 217 MAXIMUM DAILY AMOUNT STORED ON-SITE 218 ANNUAL WASTE AMOUNT 219 STATE WASTE CODE 220
 30 55 NA NA

UNITS* (Check one item only) a. GALLONS b. CUBIC FEET c. POUNDS d. TONS 221 DAYS ON SITE 222
 *If EHS amount must be in pounds. 365

STORAGE CONTAINER 223
 a. ABOVEGROUND TANK e. PLASTIC/NONMETALLIC DRUM i. FIBER DRUM m. GLASS BOTTLE q. RAIL CAR
 b. UNDERGROUND TANK f. CAN j. BAG n. PLASTIC BOTTLE r. OTHER
 c. TANK INSIDE BUILDING g. CARBOY k. BOX o. TOTE BIN
 d. STEEL DRUM h. SILO l. CYLINDER p. TANK WAGON

STORAGE PRESSURE 224
 a. AMBIENT b. ABOVE AMBIENT c. BELOW AMBIENT

STORAGE TEMPERATURE 225
 a. AMBIENT b. ABOVE AMBIENT c. BELOW AMBIENT d. CRYOGENIC

%WT	HAZARDOUS COMPONENT (For mixture or waste only)	EHS	CAS #
1 >90 226	LUBRICATING BASE OIL 227	<input type="checkbox"/> Yes <input checked="" type="checkbox"/> No 228	64741884 229
2 <10 230	DEASPHALTED RESIDUM 231	<input type="checkbox"/> Yes <input checked="" type="checkbox"/> No 232	NA 233
3 234	235	<input type="checkbox"/> Yes <input type="checkbox"/> No 236	237
4 238	239	<input type="checkbox"/> Yes <input type="checkbox"/> No 240	241
5 242	243	<input type="checkbox"/> Yes <input type="checkbox"/> No 244	245

If more hazardous components are present at greater than 1% by weight if non-carcinogenic, or 0.1% by weight if carcinogenic, attach additional sheets of paper indicating the required information.

ADDITIONAL LOCALLY COLLECTED INFORMATION: 246

If EPCRA, Please Sign Here

ALAMEDA COUNTY DEPARTMENT OF ENVIRONMENTAL HEALTH
CERTIFIED UNIFIED PROGRAM AGENCY (CUPA)
1131 Harbor Bay Parkway, Alameda, CA 94502-6577 Phone (510) 567-6700 Fax (510) 337-9335

HAZARDOUS MATERIALS INVENTORY - CHEMICAL DESCRIPTION

(One page per material per building or area)

ADD DELETE REVISE

200

Page 7 of 15

I. FACILITY INFORMATION

BUSINESS NAME (Same as FACILITY NAME or DBA - Doing Business As) 3
 Western Forge & Flange Co.

CHEMICAL LOCATION 201 CHEMICAL LOCATION CONFIDENTIAL EPCRA 202
 Hydraulic Ring Roller Area Yes No

FACILITY ID# 1 MAP # 203 GRID # 204
 Master Layout 121

II. CHEMICAL INFORMATION

Chemical Name 205 TRADE SECRET Yes No 206
 Chevron Universal Gear Oil 80/90 Weight
 If subject to EPCRA, refer to instructions

COMMON NAME 207 EHS* 208
 Chevron Universal Gear Oil 80/90 Weight Yes No

CAS # 209 *If EHS is "Yes", all amounts below must be in lbs.
 MIXTURE

FIRE CODE HAZARD CLASSES (Complete if required by CUPA) 210
 CLASS III-B combustible liquid Irritant liquid

HAZARDOUS MATERIAL TYPE (Check one item only) a. PURE b. MIXTURE c. WASTE 211 RADIOACTIVE Yes No 212 CURIES 213
 NA

PHYSICAL STATE (Check one item only) a. SOLID b. LIQUID c. GAS 214 LARGEST CONTAINER 215
 55

FED HAZARD CATEGORIES (Check all that apply) a. FIRE b. REACTIVE c. PRESSURE RELEASE d. ACUTE HEALTH e. CHRONIC HEALTH 216

AVERAGE DAILY AMOUNT STORED ON-SITE 217 MAXIMUM DAILY AMOUNT STORED ON-SITE 218 ANNUAL WASTE AMOUNT 219 STATE WASTE CODE 220
 110 165 NA NA

UNITS* (Check one item only) a. GALLONS b. CUBIC FEET c. POUNDS d. TONS 221 DAYS ON SITE 222
 *If EHS amount must be in pounds. 365

STORAGE CONTAINER 223
 a. ABOVEGROUND TANK e. PLASTIC/NONMETALLIC DRUM i. FIBER DRUM m. GLASS BOTTLE q. RAIL CAR
 b. UNDERGROUND TANK f. CAN j. BAG n. PLASTIC BOTTLE r. OTHER
 c. TANK INSIDE BUILDING g. CARBOY k. BOX o. TOTE BIN
 d. STEEL DRUM h. SILO l. CYLINDER p. TANK WAGON

STORAGE PRESSURE 224
 a. AMBIENT b. ABOVE AMBIENT c. BELOW AMBIENT

STORAGE TEMPERATURE 225
 a. AMBIENT b. ABOVE AMBIENT c. BELOW AMBIENT d. CRYOGENIC

%WT	HAZARDOUS COMPONENT (For mixture or waste only)	EHS	CAS #
1 >90 226	LUBRICATING BASE OIL 227	<input type="checkbox"/> Yes <input checked="" type="checkbox"/> No 228	64741-88-4 229
2 <10 230	ADDITIVES 231	<input type="checkbox"/> Yes <input checked="" type="checkbox"/> No 232	NA 233
3 234	235	<input type="checkbox"/> Yes <input type="checkbox"/> No 236	237
4 238	239	<input type="checkbox"/> Yes <input type="checkbox"/> No 240	241
5 242	243	<input type="checkbox"/> Yes <input type="checkbox"/> No 244	245

If more hazardous components are present at greater than 1% by weight if non-carcinogenic, or 0.1% by weight if carcinogenic, attach additional sheets of paper indicating the required information.

ADDITIONAL LOCALLY COLLECTED INFORMATION: 246

If EPCRA, Please Sign Here

ALAMEDA COUNTY DEPARTMENT OF ENVIRONMENTAL HEALTH
CERTIFIED UNIFIED PROGRAM AGENCY (CUPA)
1131 Harbor Bay Parkway, Alameda, CA 94502-6577 Phone (510) 567-6700 Fax (510) 337-9335

HAZARDOUS MATERIALS INVENTORY - CHEMICAL DESCRIPTION

(One page per material per building or area)

<input type="checkbox"/> ADD <input type="checkbox"/> DELETE <input type="checkbox"/> REVISE		200	Page <u>8</u> of <u>15</u>
I. FACILITY INFORMATION			
BUSINESS NAME (Same as FACILITY NAME or DBA - Doing Business As) Western Forge & Flange Co.			3
CHEMICAL LOCATION Storage Area	201	CHEMICAL LOCATION CONFIDENTIAL EPCRA <input type="checkbox"/> Yes <input checked="" type="checkbox"/> No	202
FACILITY ID#	1	MAP # Master Layout	203
		GRID # H17	204
II. CHEMICAL INFORMATION			
Chemical Name Chevron Soluble Oil B	205	TRADE SECRET <input type="checkbox"/> Yes <input checked="" type="checkbox"/> No If subject to EPCRA, refer to instructions	206
COMMON NAME Chevron Soluble Oil B	207	EHS* <input type="checkbox"/> Yes <input type="checkbox"/> No	208
CAS # MIXTURE	209	*If EHS is "Yes", all amounts below must be in lbs.	
FIRE CODE HAZARD CLASSES (Complete if required by CUPA) <u>CLASS III-B combustible liquid Irritant</u>			
HAZARDOUS MATERIAL TYPE (Check one item only) <input type="checkbox"/> a. PURE <input checked="" type="checkbox"/> b. MIXTURE <input type="checkbox"/> c. WASTE	211	RADIOACTIVE <input type="checkbox"/> Yes <input checked="" type="checkbox"/> No	212
PHYSICAL STATE (Check one item only) <input type="checkbox"/> a. SOLID <input checked="" type="checkbox"/> b. LIQUID <input type="checkbox"/> c. GAS	214	LARGEST CONTAINER 55	215
FED HAZARD CATEGORIES (Check all that apply) <input checked="" type="checkbox"/> a. FIRE <input type="checkbox"/> b. REACTIVE <input type="checkbox"/> c. PRESSURE RELEASE <input checked="" type="checkbox"/> d. ACUTE HEALTH <input type="checkbox"/> e. CHRONIC HEALTH			216
AVERAGE DAILY AMOUNT STORED ON-SITE 30	217	MAXIMUM DAILY AMOUNT STORED ON-SITE 55	218
		ANNUAL WASTE AMOUNT NA	219
		STATE WASTE CODE NA	220
UNITS* (Check one item only) <input checked="" type="checkbox"/> a. GALLONS <input type="checkbox"/> b. CUBIC FEET <input type="checkbox"/> c. POUNDS <input type="checkbox"/> d. TONS *If EHS amount must be in pounds.			221
		DAYS ON SITE 365	222
STORAGE CONTAINER <input type="checkbox"/> a. ABOVEGROUND TANK <input type="checkbox"/> e. PLASTIC/NONMETALLIC DRUM <input type="checkbox"/> i. FIBER DRUM <input type="checkbox"/> m. GLASS BOTTLE <input type="checkbox"/> q. RAIL CAR <input type="checkbox"/> b. UNDERGROUND TANK <input type="checkbox"/> f. CAN <input type="checkbox"/> j. BAG <input type="checkbox"/> n. PLASTIC BOTTLE <input type="checkbox"/> r. OTHER <input type="checkbox"/> c. TANK INSIDE BUILDING <input type="checkbox"/> g. CARBOY <input type="checkbox"/> k. BOX <input type="checkbox"/> o. TOTE BIN <input checked="" type="checkbox"/> d. STEEL DRUM <input type="checkbox"/> h. SILO <input type="checkbox"/> l. CYLINDER <input type="checkbox"/> p. TANK WAGON			223
STORAGE PRESSURE <input checked="" type="checkbox"/> a. AMBIENT <input type="checkbox"/> b. ABOVE AMBIENT <input type="checkbox"/> c. BELOW AMBIENT			224
STORAGE TEMPERATURE <input checked="" type="checkbox"/> a. AMBIENT <input type="checkbox"/> b. ABOVE AMBIENT <input type="checkbox"/> c. BELOW AMBIENT <input type="checkbox"/> d. CRYOGENIC			225
%WT	HAZARDOUS COMPONENT (For mixture or waste only)	EHS	CAS #
1 >75	LUBRICATING BASE OIL	<input type="checkbox"/> Yes <input checked="" type="checkbox"/> No	64742-52-5
2 <25	ADDITIVES	<input type="checkbox"/> Yes <input checked="" type="checkbox"/> No	NA
3 <2	2-BUTOXYETHANOL OR ETHYLENE GLYCOL	<input type="checkbox"/> Yes <input checked="" type="checkbox"/> No	111-76-2
4	HEXYLENE GLYCOL	<input type="checkbox"/> Yes <input checked="" type="checkbox"/> No	107-41-5
5		<input type="checkbox"/> Yes <input type="checkbox"/> No	
If more hazardous components are present at greater than 1% by weight if non-carcinogenic, or 0.1% by weight if carcinogenic, attach additional sheets of paper indicating the required information.			
ADDITIONAL LOCALLY COLLECTED INFORMATION:			
If EPCRA, Please Sign Here			

ALAMEDA COUNTY DEPARTMENT OF ENVIRONMENTAL HEALTH
CERTIFIED UNIFIED PROGRAM AGENCY (CUPA)
1131 Harbor Bay Parkway, Alameda, CA 94502-6577 Phone (510) 567-6700 Fax (510) 337-9335

HAZARDOUS MATERIALS INVENTORY - CHEMICAL DESCRIPTION

(One page per material per building or area)

ADD DELETE REVISE

200

Page 9 of 15

I. FACILITY INFORMATION

BUSINESS NAME (Same as FACILITY NAME or DBA - Doing Business As) 3

Western Forge & Flange Co.

CHEMICAL LOCATION 201

Welding

CHEMICAL LOCATION CONFIDENTIAL EPCRA 202

Yes No

FACILITY ID# 1

MAP # 203

GRID # 204

Master Layout

H9

II. CHEMICAL INFORMATION

Chemical Name 205

Carbon Dioxide- Argon Mixture

TRADE SECRET Yes No 206

If subject to EPCRA, refer to instructions

COMMON NAME 207

Carbon Dioxide/ Argon

EHS* Yes No 208

CAS # 209

MIXTURE

*If EHS is "Yes", all amounts below must be in lbs.

FIRE CODE HAZARD CLASSES (Complete if required by CUPA) 210

Nonflammable Commpressed gas

HAZARDOUS MATERIAL TYPE (Check one item only) a. PURE b. MIXTURE c. WASTE 211

RADIOACTIVE Yes No 212

CURIES NA 213

PHYSICAL STATE (Check one item only) a. SOLID b. LIQUID c. GAS 214

LARGEST CONTAINER 215

380

FED HAZARD CATEGORIES (Check all that apply) a. FIRE b. REACTIVE c. PRESSURE RELEASE d. ACUTE HEALTH e. CHRONIC HEALTH 216

AVERAGE DAILY AMOUNT STORED ON-SITE 217

250

MAXIMUM DAILY AMOUNT STORED ON-SITE 218

380

ANNUAL WASTE AMOUNT 219

NA

STATE WASTE CODE 220

NA

UNITS* (Check one item only) a. GALLONS b. CUBIC FEET c. POUNDS d. TONS 221

*If EHS amount must be in pounds.

DAYS ON SITE 222

365

STORAGE CONTAINER 223

a. ABOVEGROUND TANK e. PLASTIC/NONMETALLIC DRUM i. FIBER DRUM m. GLASS BOTTLE q. RAIL CAR
 b. UNDERGROUND TANK f. CAN j. BAG n. PLASTIC BOTTLE r. OTHER
 c. TANK INSIDE BUILDING g. CARBOY k. BOX o. TOTE BIN
 d. STEEL DRUM h. SILO l. CYLINDER p. TANK WAGON

STORAGE PRESSURE a. AMBIENT b. ABOVE AMBIENT c. BELOW AMBIENT 224

STORAGE TEMPERATURE a. AMBIENT b. ABOVE AMBIENT c. BELOW AMBIENT d. CRYOGENIC 225

%WT	HAZARDOUS COMPONENT (For mixture or waste only)	EHS	CAS #
1 75 226	ARGON 227	<input type="checkbox"/> Yes <input checked="" type="checkbox"/> No 228	7440-37-1 229
2 25 230	CARBON DIOXIDE 231	<input type="checkbox"/> Yes <input checked="" type="checkbox"/> No 232	124-38-9 233
3 234	235	<input type="checkbox"/> Yes <input type="checkbox"/> No 236	237
4 238	239	<input type="checkbox"/> Yes <input type="checkbox"/> No 240	241
5 242	243	<input type="checkbox"/> Yes <input type="checkbox"/> No 244	245

If more hazardous components are present at greater than 1% by weight if non-carcinogenic, or 0.1% by weight if carcinogenic, attach additional sheets of paper indicating the required information.

ADDITIONAL LOCALLY COLLECTED INFORMATION: 246

If EPCRA, Please Sign Here

ALAMEDA COUNTY DEPARTMENT OF ENVIRONMENTAL HEALTH
CERTIFIED UNIFIED PROGRAM AGENCY (CUPA)
1131 Harbor Bay Parkway, Alameda, CA 94502-6577 Phone (510) 567-6700 Fax (510) 337-9335

HAZARDOUS MATERIALS INVENTORY - CHEMICAL DESCRIPTION

(One page per material per building or area)

ADD DELETE REVISE

200

Page 10 of 15

I. FACILITY INFORMATION

BUSINESS NAME (Same as FACILITY NAME or DBA - Doing Business As) 3

Western Forge & Flange Co.

CHEMICAL LOCATION 201 CHEMICAL LOCATION CONFIDENTIAL EPCRA 202

Storage Area Yes No

FACILITY ID# 1 MAP # 203 GRID # 204

II. CHEMICAL INFORMATION

Chemical Name 205 TRADE SECRET Yes No 206

Chevron Quenching Oil 70
 COMMON NAME 207 EHS* 208

Chevron Quenching Oil 70 Yes No

CAS # 209 *If EHS is "Yes", all amounts below must be in lbs.

MIXTURE

FIRE CODE HAZARD CLASSES (Complete if required by CUPA) 210

CLASS III-B combustible liquid Irritant

HAZARDOUS MATERIAL TYPE (Check one item only) a. PURE b. MIXTURE c. WASTE 211 RADIOACTIVE Yes No 212 CURIES 213

PHYSICAL STATE (Check one item only) a. SOLID b. LIQUID c. GAS 214 LARGEST CONTAINER 215

FED HAZARD CATEGORIES (Check all that apply) a. FIRE b. REACTIVE c. PRESSURE RELEASE d. ACUTE HEALTH e. CHRONIC HEALTH 216

AVERAGE DAILY AMOUNT STORED ON-SITE 217 MAXIMUM DAILY AMOUNT STORED ON-SITE 218 ANNUAL WASTE AMOUNT 219 STATE WASTE CODE 220

30 55 NA NA

UNITS* (Check one item only) a. GALLONS b. CUBIC FEET c. POUNDS d. TONS 221 DAYS ON SITE 222

*If EHS amount must be in pounds. 365

STORAGE CONTAINER 223

a. ABOVEGROUND TANK e. PLASTIC/NONMETALLIC DRUM i. FIBER DRUM m. GLASS BOTTLE q. RAIL CAR
 b. UNDERGROUND TANK f. CAN j. BAG n. PLASTIC BOTTLE r. OTHER
 c. TANK INSIDE BUILDING g. CARBOY k. BOX o. TOTE BIN
 d. STEEL DRUM h. SILO l. CYLINDER p. TANK WAGON

STORAGE PRESSURE a. AMBIENT b. ABOVE AMBIENT c. BELOW AMBIENT 224

STORAGE TEMPERATURE a. AMBIENT b. ABOVE AMBIENT c. BELOW AMBIENT d. CRYOGENIC 225

%WT	HAZARDOUS COMPONENT (For mixture or waste only)	EHS	CAS #
1	226	227	229
>95	LUBRICATING BASE OIL	<input type="checkbox"/> Yes <input checked="" type="checkbox"/> No	64742-55-8
2	230	231	233
3	234	235	237
4	238	239	241
5	242	243	245

If more hazardous components are present at greater than 1% by weight if non-carcinogenic, or 0.1% by weight if carcinogenic, attach additional sheets of paper indicating the required information.

ADDITIONAL LOCALLY COLLECTED INFORMATION: 246

If EPCRA, Please Sign Here

ALAMEDA COUNTY DEPARTMENT OF ENVIRONMENTAL HEALTH
CERTIFIED UNIFIED PROGRAM AGENCY (CUPA)
1131 Harbor Bay Parkway, Alameda, CA 94502-6577 Phone (510) 567-6700 Fax (510) 337-9335

HAZARDOUS MATERIALS INVENTORY - CHEMICAL DESCRIPTION

(One page per material per building or area)

ADD DELETE REVISE

200

Page 11 of 15

I. FACILITY INFORMATION

BUSINESS NAME (Same as FACILITY NAME or DBA - Doing Business As) 3
 Western Forge & Flange Co.

CHEMICAL LOCATION 201 Storage Area CHEMICAL LOCATION CONFIDENTIAL EPCRA 202
 Yes No

FACILITY ID# 1 MAP # 203 GRID # 204
 Master Layout H17

II. CHEMICAL INFORMATION

Chemical Name 205 Chevron Black Pearl Grease TRADE SECRET Yes No 206
 If subject to EPCRA, refer to instructions

COMMON NAME 207 Chevron Black Pearl Grease (Bearing grease) EHS* Yes No 208

CAS # 209 MIXTURE *If EHS is "Yes", all amounts below must be in lbs.

FIRE CODE HAZARD CLASSES (Complete if required by CUPA) 210
 Irritant

HAZARDOUS MATERIAL TYPE (Check one item only) a. PURE b. MIXTURE c. WASTE 211 RADIOACTIVE Yes No 212 CURIES NA 213

PHYSICAL STATE (Check one item only) a. SOLID b. LIQUID c. GAS 214 LARGEST CONTAINER 5 215

FED HAZARD CATEGORIES (Check all that apply) a. FIRE b. REACTIVE c. PRESSURE RELEASE d. ACUTE HEALTH e. CHRONIC HEALTH 216

AVERAGE DAILY AMOUNT STORED ON-SITE 217 3 MAXIMUM DAILY AMOUNT STORED ON-SITE 218 5 ANNUAL WASTE AMOUNT 219 NA STATE WASTE CODE 220 NA

UNITS* (Check one item only) a. GALLONS b. CUBIC FEET c. POUNDS d. TONS 221 *If EHS amount must be in pounds. DAYS ON SITE 222 365

STORAGE CONTAINER 223
 a. ABOVEGROUND TANK e. PLASTIC/NONMETALLIC DRUM i. FIBER DRUM m. GLASS BOTTLE q. RAIL CAR
 b. UNDERGROUND TANK f. CAN j. BAG n. PLASTIC BOTTLE r. OTHER
 c. TANK INSIDE BUILDING g. CARBOY k. BOX o. TOTE BIN
 d. STEEL DRUM h. SILO l. CYLINDER p. TANK WAGON

STORAGE PRESSURE a. AMBIENT b. ABOVE AMBIENT c. BELOW AMBIENT 224

STORAGE TEMPERATURE a. AMBIENT b. ABOVE AMBIENT c. BELOW AMBIENT d. CRYOGENIC 225

%WT	HAZARDOUS COMPONENT (For mixture or waste only)	EHS	CAS #
1 >75 226	LUBRICATING BASE OIL 227	<input type="checkbox"/> Yes <input checked="" type="checkbox"/> No 228	NA 229
2 <25 230	ADDITIVES 231	<input type="checkbox"/> Yes <input checked="" type="checkbox"/> No 232	NA 233
3 1 234	CALCIUM HYDROXIDE 235	<input type="checkbox"/> Yes <input checked="" type="checkbox"/> No 236	1305-62-0 237
4 .2 238	TRIMETHYLDIHYDROQUINOLINE POLYMER 239	<input type="checkbox"/> Yes <input checked="" type="checkbox"/> No 240	NA 241
5 242	243	<input type="checkbox"/> Yes <input type="checkbox"/> No 244	245

If more hazardous components are present at greater than 1% by weight if non-carcinogenic, or 0.1% by weight if carcinogenic, attach additional sheets of paper indicating the required information.

ADDITIONAL LOCALLY COLLECTED INFORMATION: 246

If EPCRA, Please Sign Here

ALAMEDA COUNTY DEPARTMENT OF ENVIRONMENTAL HEALTH
CERTIFIED UNIFIED PROGRAM AGENCY (CUPA)
 1131 Harbor Bay Parkway, Alameda, CA 94502-6577 Phone (510) 567-6700 Fax (510) 337-9335

HAZARDOUS MATERIALS INVENTORY - CHEMICAL DESCRIPTION

(One page per material per building or area)

ADD DELETE REVISE

200

Page 12 of 15

I. FACILITY INFORMATION

BUSINESS NAME (Same as FACILITY NAME or DBA - Doing Business As) 3
 Western Forge & Flange Co.

CHEMICAL LOCATION 201
 Boiler Area

CHEMICAL LOCATION CONFIDENTIAL EPCRA 202
 Yes No

FACILITY ID# 1

MAP # 203

GRID # 204

Master Layout

F17

II. CHEMICAL INFORMATION

Chemical Name 205

Boiler Treat 6000

TRADE SECRET Yes No 206

If subject to EPCRA, refer to instructions

COMMON NAME 207

Boiler Treat 6000

EHS* Yes No 208

CAS # 209

MIXTURE

*If EHS is "Yes", all amounts below must be in lbs.

FIRE CODE HAZARD CLASSES (Complete if required by CUPA) 210

Corrosives

HAZARDOUS MATERIAL TYPE (Check one item only) a. PURE b. MIXTURE c. WASTE 211

RADIOACTIVE Yes No 212

CURIES NA 213

PHYSICAL STATE (Check one item only) a. SOLID b. LIQUID c. GAS 214

LARGEST CONTAINER 215

300

FED HAZARD CATEGORIES (Check all that apply) a. FIRE b. REACTIVE c. PRESSURE RELEASE d. ACUTE HEALTH e. CHRONIC HEALTH 216

AVERAGE DAILY AMOUNT STORED ON-SITE 217
 200

MAXIMUM DAILY AMOUNT STORED ON-SITE 218
 300

ANNUAL WASTE AMOUNT 219
 NA

STATE WASTE CODE 220
 NA

UNITS* (Check one item only) a. GALLONS b. CUBIC FEET c. POUNDS d. TONS 221
 *If EHS amount must be in pounds.

DAYS ON SITE 222
 365

STORAGE CONTAINER 223

- a. ABOVEGROUND TANK e. PLASTIC/NONMETALLIC DRUM i. FIBER DRUM m. GLASS BOTTLE q. RAIL CAR
 b. UNDERGROUND TANK f. CAN j. BAG n. PLASTIC BOTTLE r. OTHER
 c. TANK INSIDE BUILDING g. CARBOY k. BOX o. TOTE BIN
 d. STEEL DRUM h. SILO l. CYLINDER p. TANK WAGON

STORAGE PRESSURE a. AMBIENT b. ABOVE AMBIENT c. BELOW AMBIENT 224

STORAGE TEMPERATURE a. AMBIENT b. ABOVE AMBIENT c. BELOW AMBIENT d. CRYOGENIC 225

%WT	HAZARDOUS COMPONENT (For mixture or waste only)	EHS	CAS #
1 NA 226	SODIUM HYDROXIDE OR CAUSTIC SODA 227	<input type="checkbox"/> Yes <input checked="" type="checkbox"/> No 228	1310-73-2 229
2 NA 230	PROPRIETARY INGREDIENTS 231	<input type="checkbox"/> Yes <input checked="" type="checkbox"/> No 232	NA 233
3 234	235	<input type="checkbox"/> Yes <input type="checkbox"/> No 236	237
4 238	239	<input type="checkbox"/> Yes <input type="checkbox"/> No 240	241
5 242	243	<input type="checkbox"/> Yes <input type="checkbox"/> No 244	245

If more hazardous components are present at greater than 1% by weight if non-carcinogenic, or 0.1% by weight if carcinogenic, attach additional sheets of paper indicating the required information.

ADDITIONAL LOCALLY COLLECTED INFORMATION: 246

If EPCRA, Please Sign Here

ALAMEDA COUNTY DEPARTMENT OF ENVIRONMENTAL HEALTH
CERTIFIED UNIFIED PROGRAM AGENCY (CUPA)
1131 Harbor Bay Parkway, Alameda, CA 94502-6577 Phone (510) 567-6700 Fax (510) 337-9335

HAZARDOUS MATERIALS INVENTORY - CHEMICAL DESCRIPTION

(One page per material per building or area)

ADD DELETE REVISE

200

Page 13 of 15

I. FACILITY INFORMATION

BUSINESS NAME (Same as FACILITY NAME or DBA - Doing Business As) 3

Western Forge & Flange Co.

CHEMICAL LOCATION 201

Storage, Welding

CHEMICAL LOCATION CONFIDENTIAL EPCRA 202

Yes No

FACILITY ID# 1

MAP # 203

GRID # 204

Master Layout

H9, J18

II. CHEMICAL INFORMATION

Chemical Name 205

ACETYLENE OR ETHYNE

TRADE SECRET Yes No 206

If subject to EPCRA, refer to instructions

COMMON NAME 207

Acetylene

EHS* Yes No 208

CAS # 209

74-86-2

*If EHS is "Yes", all amounts below must be in lbs.

FIRE CODE HAZARD CLASSES (Complete if required by CUPA) 210

Flammable gas (gaseous) CLASS 2 unstable gas (reactive)

HAZARDOUS MATERIAL TYPE (Check one item only) a. PURE b. MIXTURE c. WASTE 211

RADIOACTIVE Yes No 212

CURIES NA 213

PHYSICAL STATE (Check one item only) a. SOLID b. LIQUID c. GAS 214

LARGEST CONTAINER 215

210

FED HAZARD CATEGORIES (Check all that apply) a. FIRE b. REACTIVE c. PRESSURE RELEASE d. ACUTE HEALTH e. CHRONIC HEALTH 216

AVERAGE DAILY AMOUNT STORED ON-SITE 217

150

MAXIMUM DAILY AMOUNT STORED ON-SITE 218

210

ANNUAL WASTE AMOUNT 219

NA

STATE WASTE CODE 220

NA

UNITS* (Check one item only) a. GALLONS b. CUBIC FEET c. POUNDS d. TONS 221

*If EHS amount must be in pounds.

DAYS ON SITE 222

365

STORAGE CONTAINER 223

- a. ABOVEGROUND TANK e. PLASTIC/NONMETALLIC DRUM i. FIBER DRUM m. GLASS BOTTLE q. RAIL CAR
 b. UNDERGROUND TANK f. CAN j. BAG n. PLASTIC BOTTLE r. OTHER
 c. TANK INSIDE BUILDING g. CARBOY k. BOX o. TOTE BIN
 d. STEEL DRUM h. SILO l. CYLINDER p. TANK WAGON

STORAGE PRESSURE a. AMBIENT b. ABOVE AMBIENT c. BELOW AMBIENT 224

STORAGE TEMPERATURE a. AMBIENT b. ABOVE AMBIENT c. BELOW AMBIENT d. CRYOGENIC 225

%WT	HAZARDOUS COMPONENT (For mixture or waste only)	EHS	CAS #
1 100	ACETYLENE OR ETHYNE	<input type="checkbox"/> Yes <input checked="" type="checkbox"/> No	74-86-2
2		<input type="checkbox"/> Yes <input type="checkbox"/> No	
3		<input type="checkbox"/> Yes <input type="checkbox"/> No	
4		<input type="checkbox"/> Yes <input type="checkbox"/> No	
5		<input type="checkbox"/> Yes <input type="checkbox"/> No	

If more hazardous components are present at greater than 1% by weight if non-carcinogenic, or 0.1% by weight if carcinogenic, attach additional sheets of paper indicating the required information.

ADDITIONAL LOCALLY COLLECTED INFORMATION: 246

If EPCRA, Please Sign Here

ALAMEDA COUNTY DEPARTMENT OF ENVIRONMENTAL HEALTH
CERTIFIED UNIFIED PROGRAM AGENCY (CUPA)
 1131 Harbor Bay Parkway, Alameda, CA 94502-6577 Phone (510) 567-6700 Fax (510) 337-9335

HAZARDOUS MATERIALS INVENTORY - CHEMICAL DESCRIPTION

(One page per material per building or area)

ADD DELETE REVISE

200

Page 14 of 15

I. FACILITY INFORMATION

BUSINESS NAME (Same as FACILITY NAME or DBA - Doing Business As) 3
 Western Forge & Flange Co.

CHEMICAL LOCATION 201 CHEMICAL LOCATION CONFIDENTIAL EPCRA 202
 Forge Area Yes No

FACILITY ID# 1 MAP # 203 GRID # 204
 Master Layout O25

II. CHEMICAL INFORMATION

Chemical Name 205 TRADE SECRET Yes No 206
 Waste Oil If subject to EPCRA, refer to instructions

COMMON NAME 207 EHS* 208
 Waste Oil Yes No

CAS # 209 *If EHS is "Yes", all amounts below must be in lbs.

FIRE CODE HAZARD CLASSES (Complete if required by CUPA) 210

CLASS III-B combustible liquid Irritant

HAZARDOUS MATERIAL TYPE (Check one item only) a. PURE b. MIXTURE c. WASTE 211 RADIOACTIVE Yes No 212 CURIES 213
 NA

PHYSICAL STATE (Check one item only) a. SOLID b. LIQUID c. GAS 214 LARGEST CONTAINER 215
 1000

FED HAZARD CATEGORIES (Check all that apply) a. FIRE b. REACTIVE c. PRESSURE RELEASE d. ACUTE HEALTH e. CHRONIC HEALTH 216

AVERAGE DAILY AMOUNT STORED ON-SITE 217 MAXIMUM DAILY AMOUNT STORED ON-SITE 218 ANNUAL WASTE AMOUNT 219 STATE WASTE CODE 220
 400 700 NONE SHIPPED IN 2006 221

UNITS* (Check one item only) a. GALLONS b. CUBIC FEET c. POUNDS d. TONS 221 DAYS ON SITE 222
 *If EHS amount must be in pounds. 365

STORAGE CONTAINER 223
 a. ABOVEGROUND TANK e. PLASTIC/NONMETALLIC DRUM i. FIBER DRUM m. GLASS BOTTLE q. RAIL CAR
 b. UNDERGROUND TANK f. CAN j. BAG n. PLASTIC BOTTLE r. OTHER
 c. TANK INSIDE BUILDING g. CARBOY k. BOX o. TOTE BIN
 d. STEEL DRUM h. SILO l. CYLINDER p. TANK WAGON

STORAGE PRESSURE 224
 a. AMBIENT b. ABOVE AMBIENT c. BELOW AMBIENT

STORAGE TEMPERATURE 225
 a. AMBIENT b. ABOVE AMBIENT c. BELOW AMBIENT d. CRYOGENIC

%WT	HAZARDOUS COMPONENT (For mixture or waste only)	EHS	CAS #
1 100 226	WASTE OIL AND WATER 227	<input type="checkbox"/> Yes <input checked="" type="checkbox"/> No 228	NA 229
2 230	231	<input type="checkbox"/> Yes <input type="checkbox"/> No 232	233
3 234	235	<input type="checkbox"/> Yes <input type="checkbox"/> No 236	237
4 238	239	<input type="checkbox"/> Yes <input type="checkbox"/> No 240	241
5 242	243	<input type="checkbox"/> Yes <input type="checkbox"/> No 244	245

If more hazardous components are present at greater than 1% by weight if non-carcinogenic, or 0.1% by weight if carcinogenic, attach additional sheets of paper indicating the required information.

ADDITIONAL LOCALLY COLLECTED INFORMATION: 246

If EPCRA, Please Sign Here

ALAMEDA COUNTY DEPARTMENT OF ENVIRONMENTAL HEALTH
CERTIFIED UNIFIED PROGRAM AGENCY (CUPA)
1131 Harbor Bay Parkway, Alameda, CA 94502-6577 Phone (510) 567-6700 Fax (510) 337-9335

HAZARDOUS MATERIALS INVENTORY - CHEMICAL DESCRIPTION

(One page per material per building or area)

<input type="checkbox"/> ADD <input type="checkbox"/> DELETE <input type="checkbox"/> REVISE	200	Page <u>15</u> of <u>15</u>
--	-----	-----------------------------

I. FACILITY INFORMATION

BUSINESS NAME (Same as FACILITY NAME or DBA - Doing Business As) 3			
Western Forge & Flange Co.			
CHEMICAL LOCATION 201		CHEMICAL LOCATION CONFIDENTIAL EPCRA 202	
Hydraulic Press Ring Roller Area		<input type="checkbox"/> Yes <input checked="" type="checkbox"/> No	
FACILITY ID# 1	MAP # 203	GRID # 204	
	Master Layout	I21	

II. CHEMICAL INFORMATION

Chemical Name 205		TRADE SECRET <input type="checkbox"/> Yes <input checked="" type="checkbox"/> No 206	
Non RCRA Hazardous Waste (Sludge with Metals)		If subject to EPCRA, refer to instructions	
COMMON NAME 207		EHS* 208	
Waste Sludge with Metals, non rcra hazardous waste		<input type="checkbox"/> Yes <input type="checkbox"/> No	
CAS # 209		*If EHS is "Yes", all amounts below must be in lbs.	
MIXTURE			
FIRE CODE HAZARD CLASSES (Complete if required by CUPA) 210			
Toxic material			
HAZARDOUS MATERIAL TYPE (Check one item only) 211	<input type="checkbox"/> a. PURE <input type="checkbox"/> b. MIXTURE <input checked="" type="checkbox"/> c. WASTE	RADIOACTIVE <input type="checkbox"/> Yes <input checked="" type="checkbox"/> No 212	CURIES 213
			NA
PHYSICAL STATE (Check one item only) 214	<input checked="" type="checkbox"/> a. SOLID <input type="checkbox"/> b. LIQUID <input type="checkbox"/> c. GAS	LARGEST CONTAINER 215	
		20,000	
FED HAZARD CATEGORIES (Check all that apply) 216			
<input type="checkbox"/> a. FIRE <input type="checkbox"/> b. REACTIVE <input type="checkbox"/> c. PRESSURE RELEASE <input type="checkbox"/> d. ACUTE HEALTH <input checked="" type="checkbox"/> e. CHRONIC HEALTH			
AVERAGE DAILY AMOUNT STORED ON-SITE 217	MAXIMUM DAILY AMOUNT STORED ON-SITE 218	ANNUAL WASTE AMOUNT 219	STATE WASTE CODE 220
6,000	13500	20,000	223
UNITS* (Check one item only) <input type="checkbox"/> a. GALLONS <input type="checkbox"/> b. CUBIC FEET <input checked="" type="checkbox"/> c. POUNDS <input type="checkbox"/> d. TONS 221			DAYS ON SITE 222
			365
STORAGE CONTAINER 223			
<input type="checkbox"/> a. ABOVEGROUND TANK <input type="checkbox"/> e. PLASTIC/NONMETALLIC DRUM <input type="checkbox"/> i. FIBER DRUM <input type="checkbox"/> m. GLASS BOTTLE <input type="checkbox"/> q. RAIL CAR <input type="checkbox"/> b. UNDERGROUND TANK <input type="checkbox"/> f. CAN <input type="checkbox"/> j. BAG <input type="checkbox"/> n. PLASTIC BOTTLE <input type="checkbox"/> r. OTHER <input type="checkbox"/> c. TANK INSIDE BUILDING <input type="checkbox"/> g. CARBOY <input type="checkbox"/> k. BOX <input checked="" type="checkbox"/> o. TOTE BIN <input type="checkbox"/> d. STEEL DRUM <input type="checkbox"/> h. SILO <input type="checkbox"/> l. CYLINDER <input type="checkbox"/> p. TANK WAGON			
STORAGE PRESSURE 224			
<input checked="" type="checkbox"/> a. AMBIENT <input type="checkbox"/> b. ABOVE AMBIENT <input type="checkbox"/> c. BELOW AMBIENT			
STORAGE TEMPERATURE 225			
<input checked="" type="checkbox"/> a. AMBIENT <input type="checkbox"/> b. ABOVE AMBIENT <input type="checkbox"/> c. BELOW AMBIENT <input type="checkbox"/> d. CRYOGENIC			

%WT	HAZARDOUS COMPONENT (For mixture or waste only)	EHS	CAS #
1 99 226	SANDY GRIT/ SOIL 227	<input type="checkbox"/> Yes <input checked="" type="checkbox"/> No 228	NA 229
2 1 230	OIL 231	<input type="checkbox"/> Yes <input checked="" type="checkbox"/> No 232	NA 233
3 234	235	<input type="checkbox"/> Yes <input type="checkbox"/> No 236	237
4 238	239	<input type="checkbox"/> Yes <input type="checkbox"/> No 240	241
5 242	243	<input type="checkbox"/> Yes <input type="checkbox"/> No 244	245

If more hazardous components are present at greater than 1% by weight if non-carcinogenic, or 0.1% by weight if carcinogenic, attach additional sheets of paper indicating the required information.

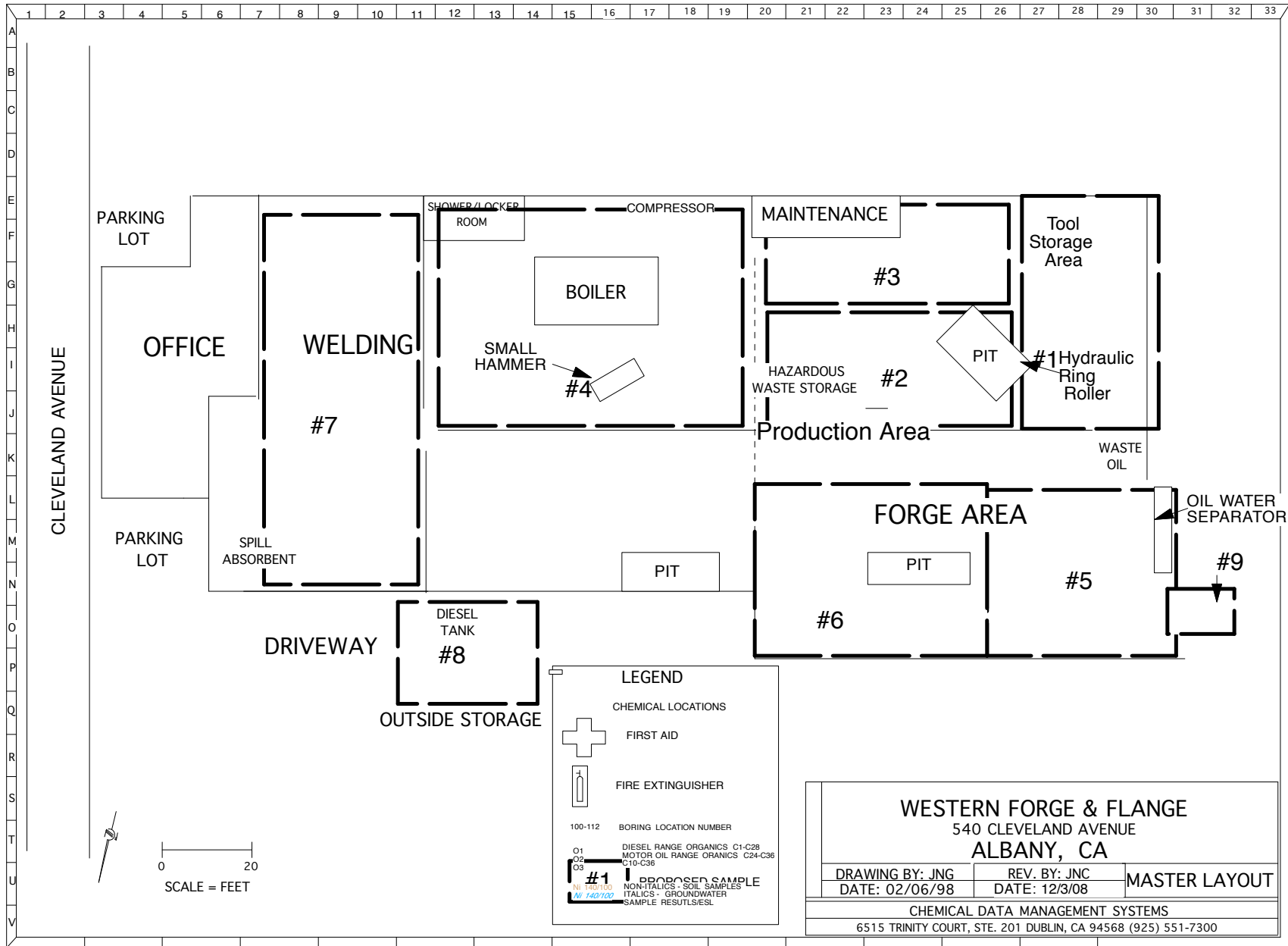
ADDITIONAL LOCALLY COLLECTED INFORMATION: 246
If EPCRA, Please Sign Here

III. DISPOSITION

Chemical	Disposal/Removal
Canola Frying Shortening	Depleted during operation
Propane	Empty tanks shipped to new facility for reuse.
Oxygen	Returned to vendor
Chevron LS Diesel 2	Depleted During Operation
Chevron ISO 460 Hydraulic Oil	Depleted During Operation
Chevron ISO 460 Cylinder Oil	Depleted During Operation
Chevron Universal Gear Oil 80/90 Wt.	Depleted During Operation
Chevron Soluble Oil B	Small Balanced Shipped to Santa Clara
Carbon Dioxide / Argon	Depleted During Operation
Chevron Quenching Oil 70	Depleted During Operation
Chevron Black Pearl Grease	No Longer Used
Boiler Treat 6000	No Longer Used
Acetylene	Returned Cylinders to Vendors
Waste Oil	Sent to TSDF
Waste Sludge w/ Metals	Sent to TSDF

Equipment	Disposal/Removal
Diesel Tank	Returned to Vendor
Oil/Water Separator	Shipped to Texas Facility
1,500 ton Hydraulic Press	Shipped to Texas Facility
3,000 lbs. Hydraulic Hammer	Shipped to Texas Facility
12,000 lbs. Hydraulic Hammer	Shipped to Texas Facility
14,000 lbs. Hydraulic Hammer	Shipped to Texas facility
Hydraulic Ring Roller	Shipped to Texas Facility
Forge Furnaces	Shipped to Texas Facility
Industrial Boiler	To Be Sold

IV. Proposed Sampling Drawing



V. Closure Notification Form

ALAMEDA COUNTY DEPARTMENT OF ENVIRONMENTAL HEALTH
A Certified Unified Program Agency

FACILITY CLOSURE NOTIFICATION FORM

Facility Name: Western Forge and Flange
Facility Address: 540 Cleveland Ave, Albany, CA 94706
Mailing Address: 687 County Road 2201, Cleveland, TX 77327
Business phone: 281-727-7001 Contact person/Title: Walter Pierce, President

No hazardous or potentially hazardous items are to be removed from the site until the Closure Notification Form and/or a Closure Plan has (have) been submitted and approved.

Check all boxes relating to the facility to be closed:

- Limited closure (only a portion of the business operation) Describe Area: _____
- Full Business Closure – Describe square footage used for hazardous materials: The facility previously contained hazardous materials. It is approximately 24K sqft. See Closure Plan for add'l details.
- Full Site Closure (buildings to be demolished/redevelopment of property) Describe site, size, no. of buildings and hazardous materials areas: _____
- Generated hazardous waste
- Tiered permit unit (e.g., PBR, CE, etc.)
- Waste treatment system
- Discharges to sanitary sewer
- HMBP on file
- Dry cleaner
- Photo developer
- One piece of equipment only
- Subject to Federal ARP or CAL ARP
- BAAQMD permit
- Compressed gas cylinder(s)
- Scrubbers/fume hoods/ducting
- Sumps, hoists
- Radioactive materials
- Biohazards
- Underground tanks # _____
- Aboveground tanks # 2
- Vehicle or engine maintenance
- Parts washer
- Degreaser unit
- CFC or HCFC appliances present
- Plating shop
- Semiconductor fab
- Dispensing of flammable or combustible liquids
- sandblasting or metals deposition
- Barrel/drum storage
- Trenches/containment areas
- Chemical storage cabinets
- More than one building
- Other: _____

A closure plan approved by Alameda County Department of Environmental Health is required for facilities that are to be closed or for any storage/use/handling/processing area(s) that are to be closed. Facility Closure Plans and Notifications are to be submitted no less than 30 days prior to the intended date of closure.

This document must be signed by the Facility Manager, an Officer of the Company, property owner, or other responsible party (not the consultant or contractor).

I hereby certify under penalty of perjury that the information contained in this FACILITY CLOSURE NOTIFICATION is true and correct. I recognize the CUPA has full right-of-entry to my complete facility for the purpose of investigation and inspection to demonstrate compliance with this Application and applicable state and local regulations.

Authorized Signature/Date: _____

Printed Name/ Title: Walter Pierce, President

HAZMAT STORAGE FACILITY CLOSURE GUIDELINES

Closure Plan summary

The information in the Facility Closure Notification and Closure Plan must be consistent with information presented in the Hazardous Materials Inventory Statement (HMIS) on file with the Alameda County Department of Environmental Health (ACDEH). A Closure Plan approved by the ACDEH is required if any Hazardous Materials Facility, or any storage area therein, is to be closed. The facility manager or owner, or the property owner shall submit the plan.

The Closure Plan must be submitted to ACDEH no less than 30 days prior to the termination of the storage of hazardous materials at the storage facility for currently operating facilities. The information in the closure plan shall describe procedures for terminating the storage of hazardous materials in each storage facility in a manner that:

1. Demonstrates that the hazardous materials used or stored at the facility will be removed, disposed of, or reused in an appropriate manner; and
2. Threat to public health or safety or to the environment from residual hazardous materials in the storage facility is eliminated or minimized to the extent; and
3. Eliminates or minimizes the need for further maintenance or monitoring.

Hazardous or potentially hazardous materials including, but not limited to, chemicals, tanks, vats, and process equipment, are NOT to be removed from the site until the closure plan has been submitted and approved, or ACDEH has approved limited removal of equipment for sale or transfer purposes. All equipment shall be identified and inspected prior to removal.

Additional Permits and Approvals

If underground storage tanks (UST) are being closed, a separate UST closure plan must also be submitted and approved, and a permit issued before this work may commence. Local building department permits are likely required for some types of demolition work. Closure of groundwater or vadose wells will also require a permit from the local well-permitting agency.

Closure Plan elements

1. A completed Closure Notification form.
2. General site and facility maps/diagrams.
3. A site history describing all past and current chemical usage and/or storage of hazardous materials/wastes. A diagram must be provided showing past uses for each room/building/area and listing all chemicals which have at some time been located in each area.
4. A history of all soils and/or groundwater sampling which has been performed at the site.
5. A summary of all facilities to be closed including (as applicable):
 - a. Identification of fixed equipment and buildings

VI – Wipe Sampling Protocol

Equipment

1. Appropriate filter media to wipe down surfaces
2. A plastic, reusable template (with a 100 cm², or 1 ft²) space within it to allow the filter to be wiped across the template
3. Distilled water and sterile cloths to clean the area template between samples
4. Appropriately sized vials to contain sampling filters or media
5. Tweezers (with rounded ends)
6. Plastic surgical gloves (or equivalent)
7. Carrying case to carry sampling supplies and sample vials
8. Blank Wipe Sampling Form
9. Blank Chain of Custody/Sample Request Form
10. Sample number labels and plastic bags
11. Marking pen
12. Safety glasses.

Procedure

When performing wipe sampling onsite, identify and document all areas to be sampled. Use building maps or an equally detailed description of the area, including the room number, surface location, and surface texture area. Also, if allowed, photographs are useful for documenting sampling site.

Put on disposable gloves to minimize contamination of the wipe by metal or other materials on the fingers or hands. Be aware that additional personal protective equipment may be required. In some cases rounded-end tweezers may be needed to collect the sample.

While using safety glasses, remove the wipe filter from the vial and, after wetting it with distilled de-ionized water or solvent, place two (wetted) blank wipes in individual vials and label the vials with a marking pen.

Begin sampling in an area with the least likelihood of contamination and proceed to other areas in order of increasing likelihood of greater contamination (this also determines the extent of the contamination).

Place the wipe flat on the measured or templated surface (100 cm²) to be sampled. Using consistent speed and even pressure with fingertips move the wipe in an X pattern being sure to wipe along the perimeter of the area sampled.

NOTE: Do not scrub the surface with the wipe.

Use a continuous motion so the material is collected on the wipe in one direction.

Fold the filter again and, using rounded-end tweezers, place the filter into the labeled vial.

Mark the vial with field sample number and identify where the sample was taken on form.

Change surgical gloves to minimize cross-contamination of samples or the sampling area. Repeat the procedure until adequate representation of the sampling site is achieved.

VI - PROTOCOL FOR SOIL BORING INVESTIGATIONS & GROUNDWATER SAMPLING

This protocol presents standard field methods for drilling and sampling soil borings and collecting grab groundwater samples. These procedures are designed to comply with Federal, State and local regulatory guidelines. Specific field procedures are summarized below.

LOCATION OF SAMPLES

The samples will be located in the general areas as outlined in the January 2008 Closure Plan and as requested by the Alameda County Health Services Agency in their letter dated March 11, 2008. Approximately 4 borings will be advanced to 3 feet below grade (fbg) to collect soil samples. Soil samples will be collected at approximately one and 3 fbg. Samples will be analyzed for the recommended analyses as shown in the "*Recommended Minimum Verification Analyses for Underground Tank Leaks*" document that follows this protocol. In addition, one boring will be advanced to groundwater in the area of the former diesel UST. A soil sample will also be collected and analyzed from just above the groundwater table.

SOIL BORINGS

Objectives

Soil samples are collected to characterize subsurface lithology, assess whether the soils exhibit obvious hydrocarbon or other compound vapor or staining, and to collect samples for analysis at a State-certified laboratory. All borings are logged using the Unified Soil Classification System by a trained geologist working under the supervision of a California Registered Professional Geologist (PG).

Soil Boring and Sampling

Soil borings are typically drilled using hollow-stem augers or direct-push technologies such as the Geoprobe®. All soil borings will be drilled under supervision of a C-57 drilling contractor licensed by the State of California. Soil samples will be collected at one and three feet to characterize the subsurface sediments and for chemical analysis. Additional soil samples are collected near the water table and at lithologic changes. Samples are collected using lined split-barrel or equivalent samplers driven into undisturbed sediments at the bottom of the borehole.

Drilling and sampling equipment is steam-cleaned prior to drilling and between borings to prevent cross-contamination. Sampling equipment is washed between samples with trisodium phosphate or an equivalent EPA-approved detergent.

Sample Analysis

Sampling tubes chosen for analysis are trimmed of excess soil and capped with Teflon tape and plastic end caps. Soil samples are labeled and stored at or below 4° C on either crushed or dry ice, depending upon local regulations. Samples are transported under chain-of-custody to a State-certified analytic laboratory.

Field Screening

One of the remaining tubes is partially emptied leaving about one-third of the soil in the tube. The tube is capped with plastic end caps and set aside to allow hydrocarbons to volatilize from the soil. After ten to fifteen minutes, a portable volatile vapor analyzer measures volatile hydrocarbon vapor concentrations in the tube headspace, extracting the vapor through a slit in the cap. Volatile vapor analyzer measurements are used along with the field observations, odors, stratigraphy and groundwater depth to select soil samples for analysis.

Water Sampling

Water samples, if they are collected from the boring, are either collected using a driven Hydropunch® type sampler or are collected by inserting temporary slotted casing into the boring and collecting the water using a bailer, pump, or tubing affixed with a check valve. The groundwater samples are decanted into the appropriate containers supplied by the analytic laboratory. Samples are labeled, placed in protective foam sleeves as required, stored on crushed ice at or below 4°C, and transported under chain-of-custody to the laboratory. Laboratory-supplied trip blanks accompany the samples and are analyzed to check for cross-contamination. An equipment blank may be analyzed if non-dedicated sampling equipment is used.

Grouting

If the borings are not completed as wells, the borings are filled to the ground surface with bentonite-cement grout poured or pumped through a tremie pipe.

RECOMMENDED MINIMUM VERIFICATION ANALYSES FOR UNDERGROUND TANK LEAKS

For Use by Unidocs Member Agencies or where approved by your Local Jurisdiction

TABLE #2
REVISED 1 MARCH 1999

<u>HYDROCARBON LEAK</u>	<u>SOIL ANALYSIS</u> (SW-846 METHOD)		<u>WATER ANALYSIS</u> (Water/Waste Water Method)	
Gasoline (Leaded and Unleaded)	TPHG	8015M or 8260	TPHG	8015M or 524.2/624 (8260)
	BTEX	8260	BTEX	524.2/624 (8260)
	EDB and EDC	8260	EDB and EDC	524.2/624 (8260)
	MTBE, TAME, ETBE, DIPE, and TBA by	8260 for soil and	524.2/624 (8260) for water	
	TOTAL LEAD	AA	TOTAL LEAD	AA
		--Optional--		
	Organic Lead	DHS-LUFT	Organic Lead	DHS-LUFT
Unknown Fuel	TPHG	8015M or 8260	TPHG	8015M or 524.2/624 (8260)
	TPHD	8015M or 8260	TPHD	8015M or 524.2/624 (8260)
	BTEX	8260	BTEX	524.2/624 (8260)
	EDB and EDC	8260	EDB and EDC	524.2/624 (8260)
	MTBE, TAME, ETBE, DIPE, and TBA by	8260 for soil and	524.2/624 (8260) for water	
	TOTAL LEAD	AA	TOTAL LEAD	AA
	--Optional--			
	Organic Lead	DHS-LUFT	Organic Lead	DHS-LUFT
Diesel, Jet Fuel, Kerosene, and Fuel/Heating Oil	TPHD	8015M or 8260	TPHD	8015M or 524.2/624 (8260)
	BTEX	8260	BTEX	524.2/624 (8260)
	EDB and EDC	8260	EDB and EDC	524.2/624 (8260)
	MTBE, TAME, ETBE, DIPE, and TBA by	8260 for soil and	524.2/624 (8260) for water	
Chlorinated Solvents	CL HC	8260	CL HC	524.2/624 (8260)
	BTEX	8260 or 8021	BTEX	524.2/624 (8260) or 502.2/602 (8021)
Nonchlorinated Solvents	TPHD	8015M or 8260	TPHD	8015M or 524.2/624 (8260)
	BTEX	8260 or 8021	BTEX	524.2/624 (8260) or 502.2/602 (8021)
Waste, Used, or Unknown Oil	TPHG	8015M or 8260	TPHG	8015M or 524.2/624 (8260)
	TPHD	8015M or 8260	TPHD	8015M or 524.2/624 (8260)
	O&G	9070	O&G	418.1
	BTEX	8260	BTEX	524.2/624 (8260)
	CL HC	8260	CL HC	524.2/624 (8260)
	EDB and EDC	8260	EDB and EDC	524.2/624 (8260)
	MTBE, TAME, ETBE, DIPE, and TBA by	8260 for soil and	524.2/624 (8260) for water	
	METALS (Cd, Cr, Pb, Ni, Zn) by ICAP or AA for soil water			
	PCB*, PCP*, PNA, CREOSOTE by 8270 for soil and 524/625 (8270) for water			
			If found, analyze for dibenzofurans (PCBs) or dioxins (PCP)	

NOTES:

1. 8021 replaces old methods 8020 and 8010
2. 8260 replaces old method 8240
3. Reference: Table B-1 in Appendix B of "Expedited Site Assessment Tools for Underground Storage Tank Sites: A Guide for Regulators" (EPA 510-B-97-001).