

## Jakub, Barbara, Env. Health

---

**From:** Jakub, Barbara, Env. Health  
**Sent:** Thursday, March 05, 2009 5:09 PM  
**To:** 'Alvaro Dominguez'  
**Cc:** Ignacio Dayrit  
**Subject:** RE: Former Ambassador Laundry Plates- new proposed well location

Dear Messrs. Dayrit and Dominquez,

In a conversation earlier with your consultant, Alvaro proposed moving well MW-5 and borings A and D to a transect in the middle of the site. Based on the preliminary findings presented in the figure provided by Alvaro, I concur with these locations. In addition I recommend moving MW-1 to the southwest as was discussed in our phone conversation, but is not shown on the map.

Regards,

Barbara Jakub, P.G.  
Alameda County Environmental Health  
(510) 639-1287 (direct)  
(510) 337-9335 (fax)  
[barbara.jakub@acgov.org](mailto:barbara.jakub@acgov.org)

Online case files are available at the website below  
<http://www.acgov.org/aceh/index.htm>

---

**From:** Alvaro Dominguez [mailto:ADominguez@kleinfelder.com]  
**Sent:** Thursday, March 05, 2009 3:42 PM  
**To:** Jakub, Barbara, Env. Health  
**Cc:** Ignacio Dayrit  
**Subject:** Former Ambassador Laundry Plates- new proposed well location

Barbara

Nice talking with you this afternoon.

Enclosed please find the draft plates showing a summary of the preliminary CPT and analytical results and a plate showing the new proposed location of the boring/wells that remain to be advanced.

So far we have not defined the date we will restart the drilling and well installation work; but the tentative date (weather permitting) is March 17.

I will inform you as soon as we confirm the date; which I estimate will be around next Tu or Wed (March 10 or 11)

Thanks,

Alvaro

Álvaro Domínguez  
Environmental Project Professional  
KLEINFELDER  
1970 Broadway - Suite 710  
Oakland, CA - 94612

o: 510 628-9000 x 202

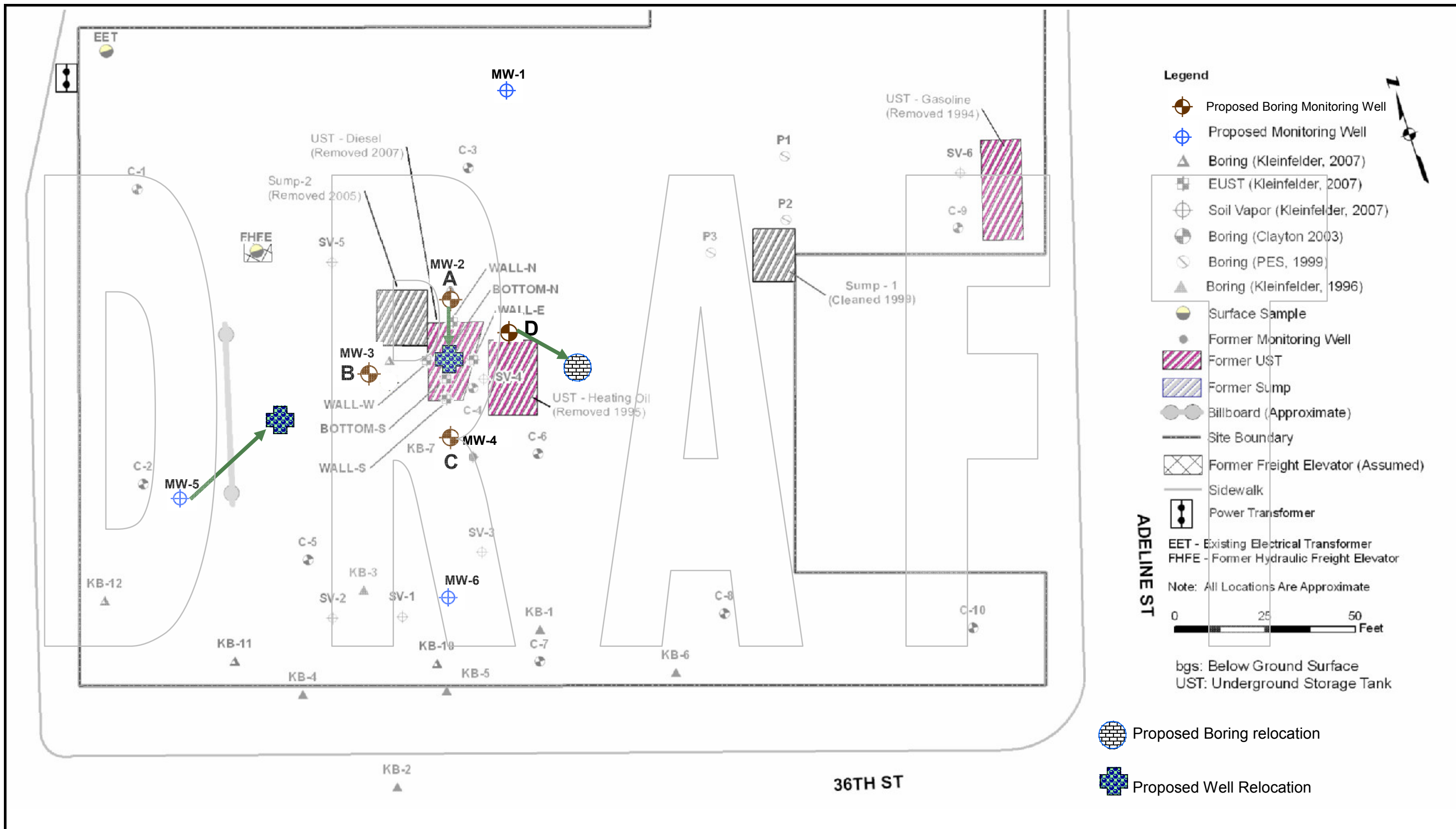
c: 510 715-7570

f: 510-628-9009 - fax



Warning: Information provided via electronic media is not guaranteed against defects including translation and transmission errors.

If the reader is not the intended recipient, you are hereby notified that any dissemination, distribution or copying of this communication is strictly prohibited. If you have received this information in error, please notify the sender immediately.



The information included on this graphic representation has been compiled from a variety of sources and is subject to change without notice. Kleinfelder makes no representations or warranties, express or implied, as to accuracy, completeness, timeliness, or rights to the use of such information. This document is not intended for use as a land survey product nor is it designed or intended as a construction design document. The use or misuse of the information contained on this graphic representation is at the sole risk of the party using or misusing the information.

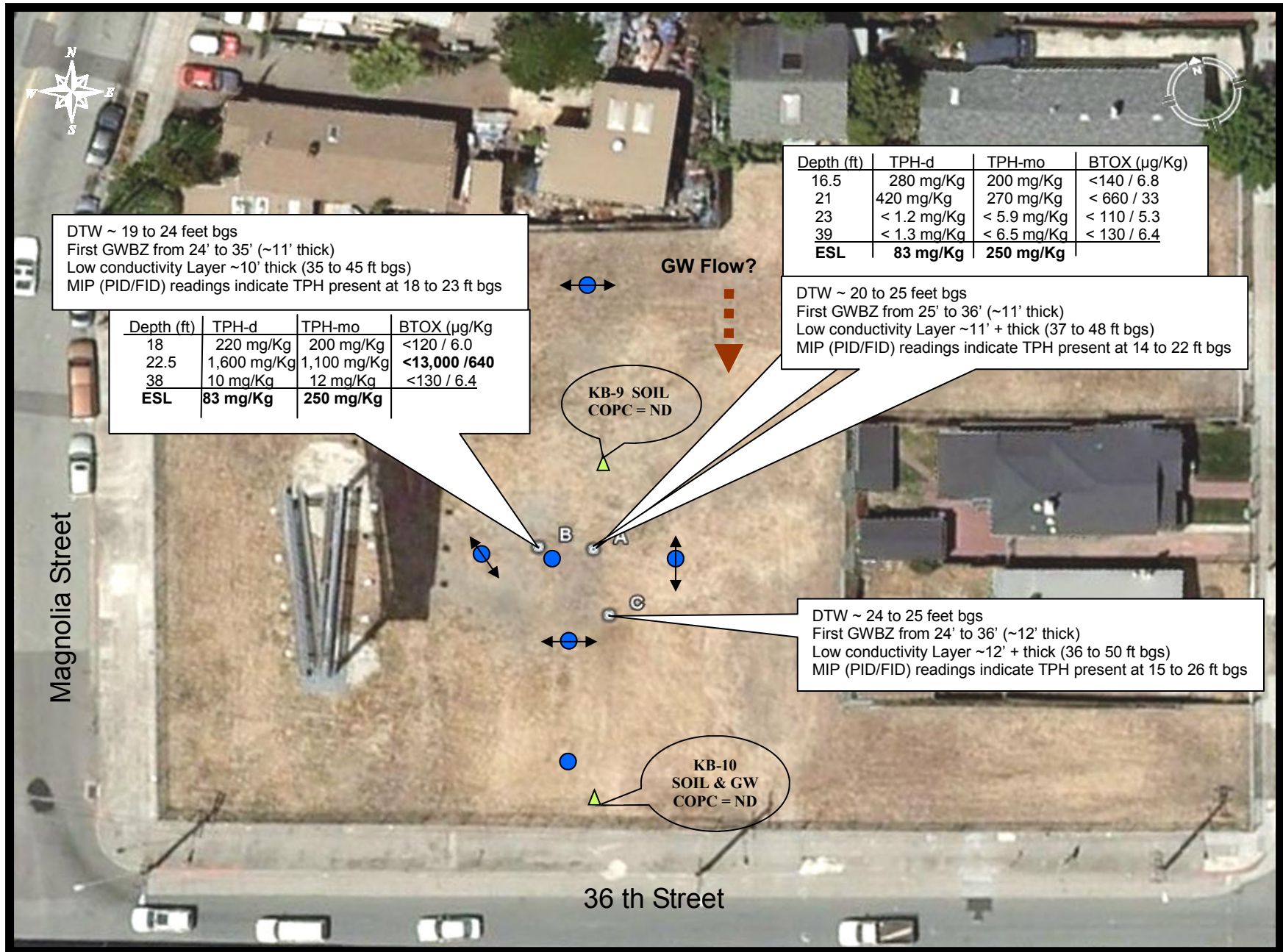


PROJECT NO. 73943  
 DRAWN: August 20, 2008  
 DRAWN BY: IMc  
 CHECKED BY: AD  
 FILE NAME:  
 Former Ambassador Laundry

**Proposed Locations of Borings and Monitoring Wells**

Former Ambassador Laundry  
 Further Site Investigation Work Plan  
 3601-3623 Adeline Street in Emeryville, California

PLATE  
**3**



The information included on this graphic representation has been compiled from a variety of sources and is subject to change without notice. Kleinfelder makes no representations or warranties, express or implied, as to accuracy, completeness, timeliness, or rights to the use of such information. This document is not intended for use as a land survey product nor is it designed or intended as a construction design document. The use or misuse of the information contained on this graphic representation is at the sole risk of the party using or misusing the information.

**KLEINFELDER**  
*Bright People. Right Solutions.*

www.kleinfelder.com

PROJECT NO. 73943
DRAWN: March 2, 2009
DRAWN BY:
CHECKED BY:
FILE NAME: Former Ambassador

**Preliminary Soil Analytical Results and Well Location DRAFT**

LUHSD Proposed Fourth High School Campus  
 76-Acre Lot Southwest of Sellers Avenue and Delta Road Intersection  
 Contra Costa County, California

PLATE