



ENVIRONMENTAL HEALTH SERVICES
ENVIRONMENTAL PROTECTION
1131 Harbor Bay Parkway, Suite 250
Alameda, CA 94502-6577
(510) 567-6700
FAX (510) 337-9335

INVITATION TO COMMENT – POTENTIAL CASE CLOSURE

**JORDAN RANCH
4233 FALLON ROAD
DUBLIN, CA 94568
SITE CLEANUP PROGRAM CASE RO0002918
GEOTRACKER GLOBAL ID T06019797353**

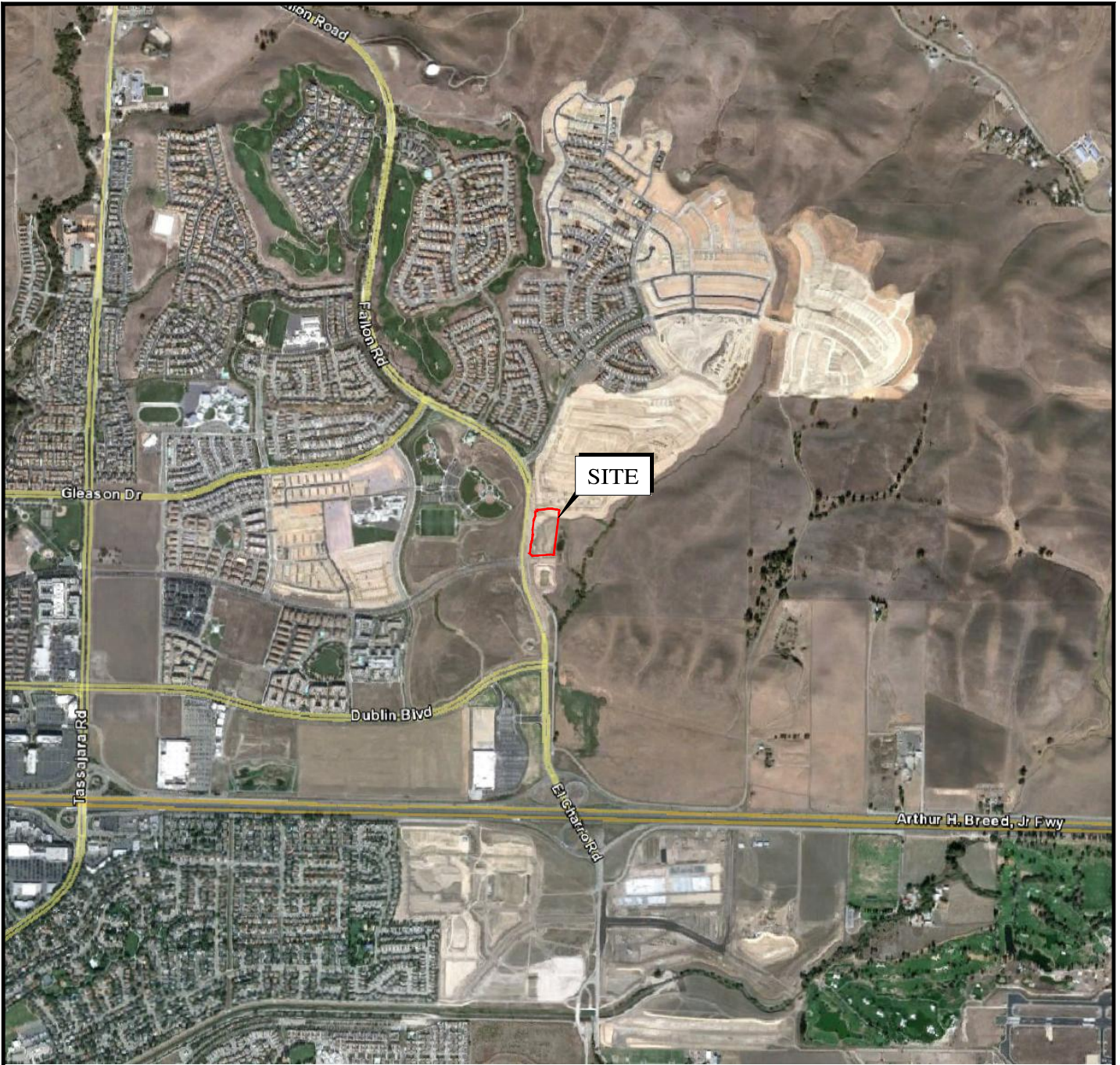
DECEMBER 30, 2014

The above referenced site is a Site Cleanup Program (SCP) case that is under the regulatory oversight of Alameda County Environmental Health (ACEH) for investigation and cleanup of gasoline and diesel fuel from a former underground storage tank. A residential development is planned for the former ranch site. A former underground storage tank (UST) was removed from the site sometime prior to 2000. Soil borings advanced at the site in 2001 detected petroleum hydrocarbons in the area of the former UST. Additional investigations between 2006 and 2013 that included soil, soil vapor, and groundwater sampling, defined the extent of contamination. In September 2011, approximately 450 cubic yards of petroleum-impacted soil was excavated from the area of the former UST. The excavated soil was stockpiled and treated on site. Following confirmation soil sampling, approximately 41.6 tons of petroleum-impacted soil from the stockpile was transported off-site for disposal at a landfill. Based on the results of confirmation soil sampling, which indicate that the remaining stockpiled soil meets cleanup goals, reuse of the treated soil below a depth of three feet is planned. Groundwater remediation was performed in October 2011 by injecting a liquid reagent to increase the rate of biodegradation of petroleum hydrocarbons in groundwater. Groundwater monitoring was conducted from 2005 to 2014. Upon completion and reporting of the reuse of the soil stockpile and destruction of monitoring wells, case closure will be considered.

This notice is being sent to the current occupants and landowners of adjacent properties and known interested parties for this site. The public is invited to review and comment on the potential case closure. The entire case file can be viewed over the Internet on the ACEH website (<http://www.acgov.org/aceh/lop/ust.htm>) or the State of California Water Resources Control Board GeoTracker website (<http://geotracker.waterboards.ca.gov>). Please send written comments to Jerry Wickham at ACEH, 1131 Harbor Bay Parkway, Alameda, CA 94502; all comments will be forwarded to the responsible parties. Comments **received by January 31, 2015** will be considered and responded to prior to a final determination on case closure.

If you have comments or questions regarding this site, please contact the ACEH caseworker, Jerry Wickham at 510-567-6791 or by email at jerry.wickham@acgov.org. Please refer to ACEH case RO0002918 in any correspondence.

COPYRIGHT © 2012 BY ENGEO INCORPORATED. THIS DOCUMENT MAY NOT BE REPRODUCED IN WHOLE OR IN PART BY ANY MEANS WHATSOEVER, NOR MAY IT BE QUOTED OR EXCERPTED WITHOUT THE EXPRESS WRITTEN CONSENT OF ENGEO INCORPORATED.



BASE MAP SOURCE: GOOGLE EARTH



VICINITY MAP
JORDAN RANCH - PARCEL H
DUBLIN, CALIFORNIA

PROJECT NO.: 7828.000.001

DATE: AS SHOWN

DRAWN BY: SRP

CHECKED BY: SM

FIGURE NO.

1