

Wickham, Jerry, Env. Health

From: Wickham, Jerry, Env. Health
Sent: Friday, January 19, 2007 4:41 PM
To: 'Kelly Krohn'
Cc: Shawn Munger
Subject: RE: Rickenbacker Circle - Figure 2 of the Revised Workplan

Kelly,

This map appears to only include soil gas sampling near the former dry cleaning machine. Is this correct? My comments which are consistent with previous correspondence are to expand soil gas sampling to each area of concern which includes within the boiler room, along the sanitary sewer alignment, within the areas used for chemical or waste storage, and any areas of surface staining.

Regards,
Jerry Wickham
Alameda County Environmental Health
1131 Harbor Bay Parkway
Alameda, CA 94502-6577
510-567-6791 phone
510-337-9335 fax
jerry.wickham@acgov.org

From: Kelly Krohn [<mailto:kkrohn@engeo.com>]
Sent: Friday, January 19, 2007 3:46 PM
To: Wickham, Jerry, Env. Health
Cc: Shawn Munger
Subject: Rickenbacker Circle - Figure 2 of the Revised Workplan

Jerry,

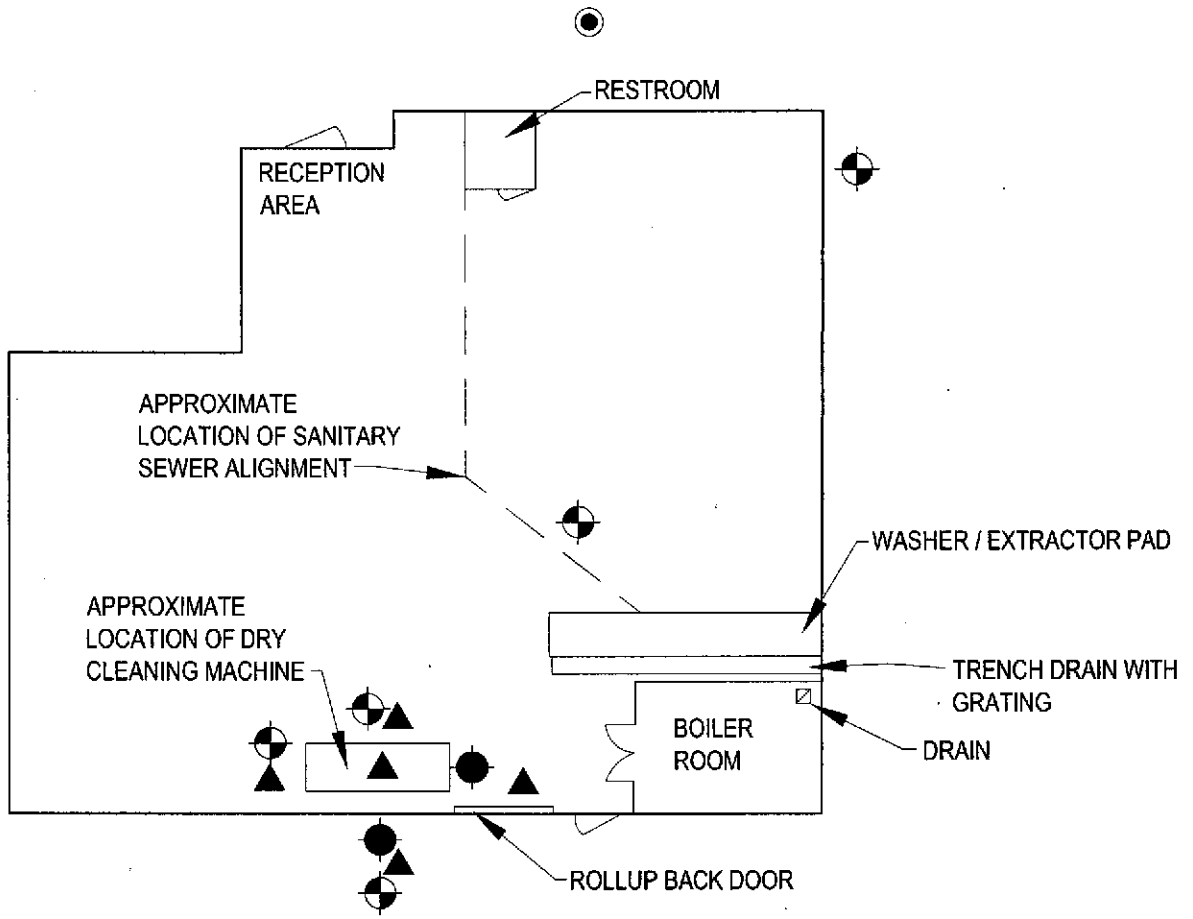
Attached is the updated Figure 2 for the Revised Work Plan at Rickenbacker Circle, Livermore. The figure shows the approximate locations of the proposed soil gas locations. Please feel free to contact us if you have any questions regarding the attached figure.

Thank you,

Kelly Krohn | **ENGEO Incorporated - Expect excellence** | 2010 Crow Canyon Place, Suite 250 | San Ramon, CA 94583 | Office: 925-866-9000 | Fax: 888-279-2698 | www.engeo.com

***Due to the potential that information by electronic media can deteriorate, be damaged, lost or modified unintentionally or otherwise, use of this electronic data by anyone other than ENGEO Incorporated shall be at the sole risk of such user and without liability or legal exposure to ENGEO Incorporated. The recipient is responsible for verifying the accuracy of data against governing hard copy documentation. Recipient assumes all risks in the changing or modification of data and revisions or updating of hard copy documents. ***

COPYRIGHT © 2007 BY ENGEO INCORPORATED. THIS DOCUMENT MAY NOT BE REPRODUCED IN WHOLE OR IN PART BY ANY MEANS WHATSOEVER, NOR MAY IT BE QUOTED OR EXCERPTED WITHOUT THE EXPRESS WRITTEN CONSENT OF ENGEO INCORPORATED.



EXPLANATION

- ⊗ APPROXIMATE LOCATION OF PROPOSED BORING
- APPROXIMATE LOCATION OF BORING (BY JMK ENVIRONMENTAL, OCTOBER 2005)
- ⊙ APPROXIMATE LOCATION OF SANITARY SEWER CLEANOUT
- ▲ APPROXIMATE LOCATION OF PROPOSED SOIL GAS SAMPLE



BASE MAP SOURCE: CITY OF LIVERMORE BUILDING DEPARTMENT

1" = 20'



SITE PLAN
 224 RICKENBACKER CIRCLE
 LIVERMORE, CALIFORNIA

PROJECT NO.: 7584.P.001.01	2
DATE: JANUARY 2007	
DRAWN BY: JRW CHECKED BY: SM	

FIGURE NO.