

Detterman, Mark, Env. Health

From: Bob Clark-Riddell [briddell@pangeaenv.com]
Sent: Monday, July 14, 2014 7:07 PM
To: Detterman, Mark, Env. Health
Cc: Tony Kershaw; Roe, Dilan, Env. Health
Subject: RE: Meeting? Albany A-1 Cleaners (RO2857)
Attachments: Work Summary June-July 2014-Solano.pdf

Categories: Red Category

Mark,

Tony would like to schedule a meeting some time in early August 2014. As I mentioned in my voicemail a few weeks ago, additional excavation was recently performed to remove residual PCE soil contamination likely responsible for the elevated subslab gas concentrations at two locations.

The excavation extent is summarized on the attached drawing. Excavation was conducted in 1187 Solano along the southeastern boundary where residual soil impact was identified in one sample (0.31 mg/kg). Excavation in the breakroom of the US Post Office at 1191 Solano successfully removed additional impact, and allowed the installation of a passive subslab ventilation system. Digging under the western wall identified an apparent shallow release of PCE in the rear of 1187 Solano, presumably from storage of former dry cleaner spent cartridges or otherwise. Excavation was subsequently performed within the parking lot/rear of 1187 Solano, where significant impact was removed down to approximately 9-10 ft.

A new monitoring well (MW-8) was installed in the parking lot to provide additional plume delineation, which your agency has requested.

We plan to sample subslab vapor in the near future to evaluate post-excavation conditions, and to conduct more indoor air monitoring. Recent groundwater data shows decreasing conditions.

What meeting dates/times do you have available in early August?

Bob Clark-Riddell, P.E.
Pangea Environmental Services, Inc.
510.435.8664

From: Bob Clark-Riddell
Sent: Monday, March 24, 2014 5:45 PM
To: Detterman, Mark, Env. Health
Cc: Tony Kershaw
Subject: RE: Meeting? Albany A-1 Cleaners (RO2857)

Mark,

Thank you for recalling Tony's preferred time slot. We would appreciate meeting on Thursday, April 3 from 10-12 noon. Please confirm at your earliest convenience. FYI, I plan to submit a draft Site Management Plan and O&M Plan by the end of the week so you have some time to peruse before our meeting. This will include some new data. Bob

Bob Clark-Riddell, P.E.
Pangea Environmental Services, Inc.
510.435.8664

From: Detterman, Mark, Env. Health [<mailto:Mark.Detterman@acgov.org>]
Sent: Monday, March 24, 2014 4:59 PM
To: Bob Clark-Riddell
Subject: Meeting? Albany A-1 Cleaners (RO2857)

Bob,
Got your voice mail about a meeting. At Tony's preferred time slot (10 -12), Dilan and I are only available next Thursday. There are other times open (March 31 Monday 1 – 3; Tuesday April 1, 1 – 3), but as far as 10 – 12, that is what is open currently.

Mark Detterman
Senior Hazardous Materials Specialist, PG, CEG
Alameda County Environmental Health
1131 Harbor Bay Parkway
Alameda, CA 94502
Direct: 510.567.6876
Fax: 510.337.9335
Email: mark.detterman@acgov.org

PDF copies of case files can be downloaded at:

<http://www.acgov.org/aceh/lop/ust.htm>

EXPLANATION

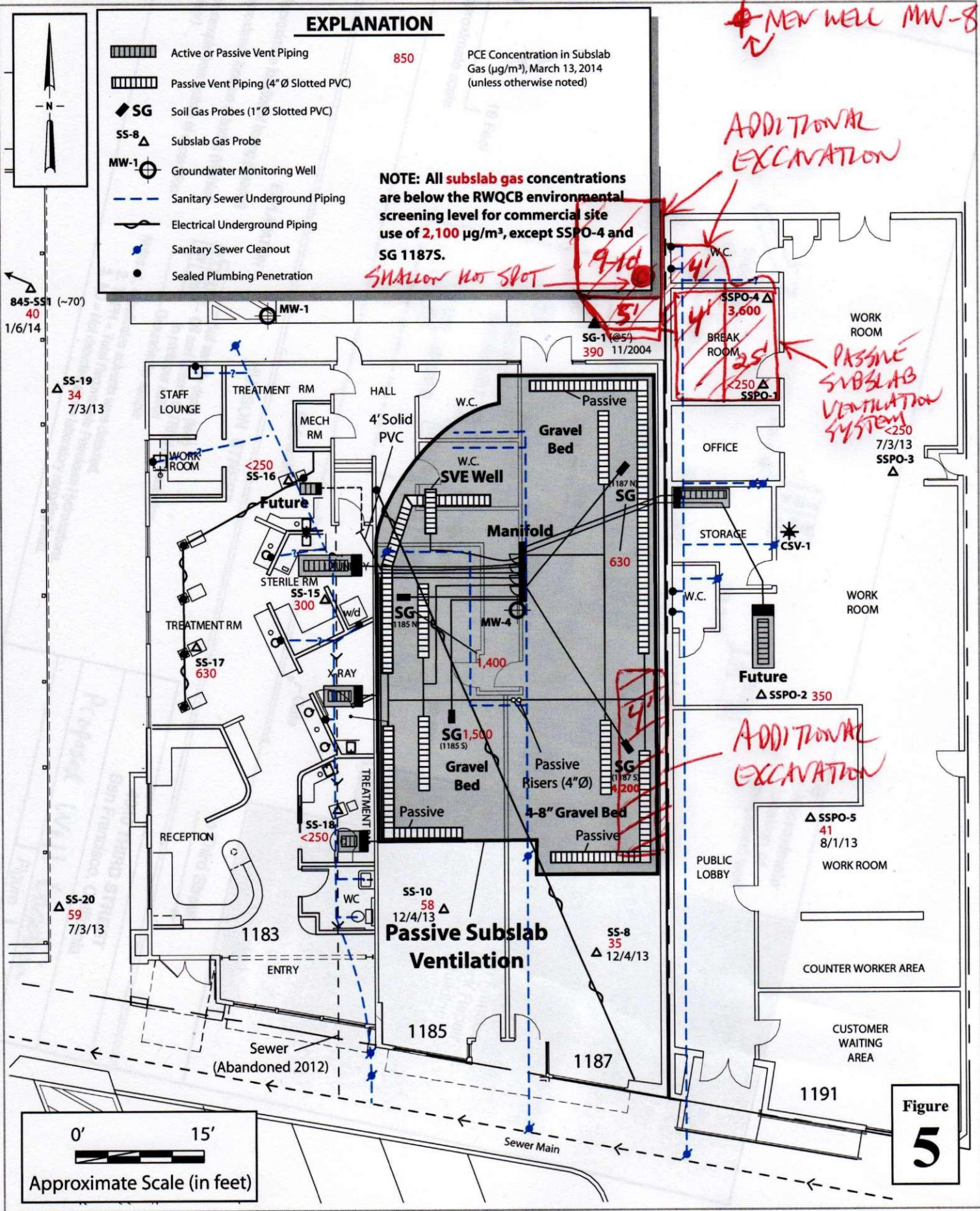
- Active or Passive Vent Piping
- Passive Vent Piping (4" Ø Slotted PVC)
- SG Soil Gas Probes (1" Ø Slotted PVC)
- SS-8 Subslab Gas Probe
- MW-1 Groundwater Monitoring Well
- Sanitary Sewer Underground Piping
- Electrical Underground Piping
- Sanitary Sewer Cleanout
- Sealed Plumbing Penetration

850 PCE Concentration in Subslab Gas ($\mu\text{g}/\text{m}^3$), March 13, 2014 (unless otherwise noted)

NOTE: All subslab gas concentrations are below the RWQCB environmental screening level for commercial site use of 2,100 $\mu\text{g}/\text{m}^3$, except SSPO-4 and SG 1187S.

SHALLOW HOT SPOT

NEW WELL MW-8
ADDITIONAL EXCAVATION



845-SS1 (~70')
40
1/6/14

SS-19
34
7/3/13

SG-1 @ 5'
390 11/2004

SSPO-4 Δ
3,600
SSPO-1
<250
7/3/13

PASSIVE SUBSLAB VENTILATION SYSTEM

Future
Δ SSPO-2 350

ADDITIONAL EXCAVATION

Δ SSPO-5
41
8/1/13
WORK ROOM

SS-20
59
7/3/13

SS-10
58
12/4/13

SS-8
35
12/4/13

Passive Subslab Ventilation

Figure 5

