

Woodward-Clyde
Consultants
Engineering & sciences applied to the earth & its environment

CONFIDENTIAL

TELECOPY TRANSMITTAL

TO: Ravi Arulanantham
FIRM: ACDEH
TELECOPY NO.: () 569-4751

DATE: 8/20
TIME: _____
NO. OF PAGES: 2
(including this page)

FROM: M. McGuire

SUBJECT: Confidential

MESSAGE: For your immediate review and comment.

It is being reviewed concurrently by the
City Attorney.

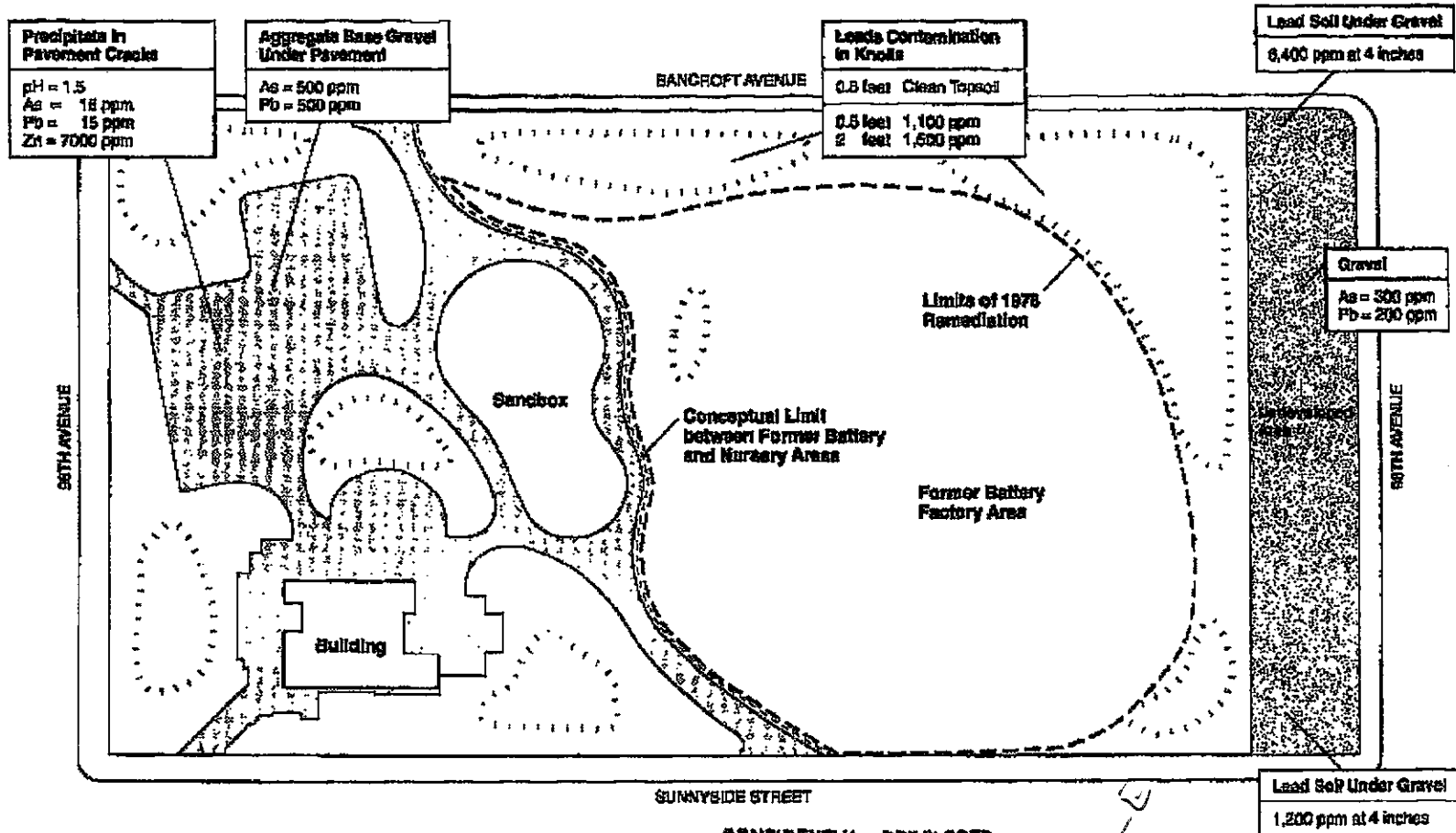
I hope that enough time remains to
have the figure sent out for blow-up
and mounting.

SHOULD YOU HAVE ANY QUESTIONS OR PROBLEMS WITH THIS
TRANSMITTAL, PLEASE CONTACT: McGuire OR _____
PHONE NUMBERS: (510) 874-3288 (510) 874- _____

OUR TELECOPY NUMBER IS: (510) 874-3268

RESULTS OF SITE CHARACTERIZATION

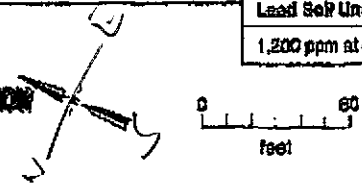
Verdese Carter Park
Oakland, California



LEGEND

- Grassy areas unless otherwise noted
- Paved areas
- Knoll

**CONFIDENTIAL. PRIVILEGED
ATTORNEY CLIENT COMMUNICATION
AND ATTORNEY WORK PRODUCT.
RESTRICT DISTRIBUTION.**



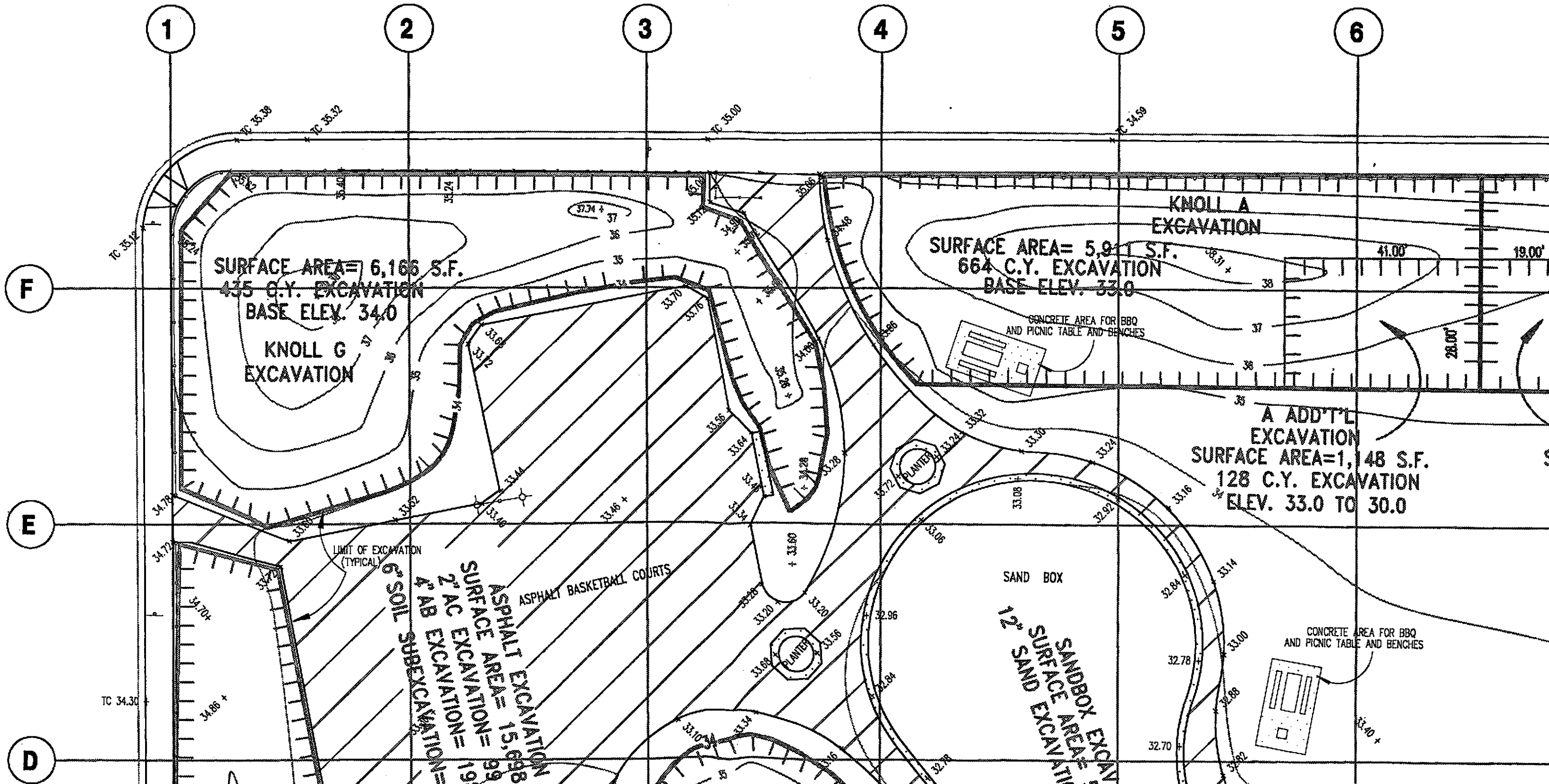
Woodward-Clyde Consultants

P02/**

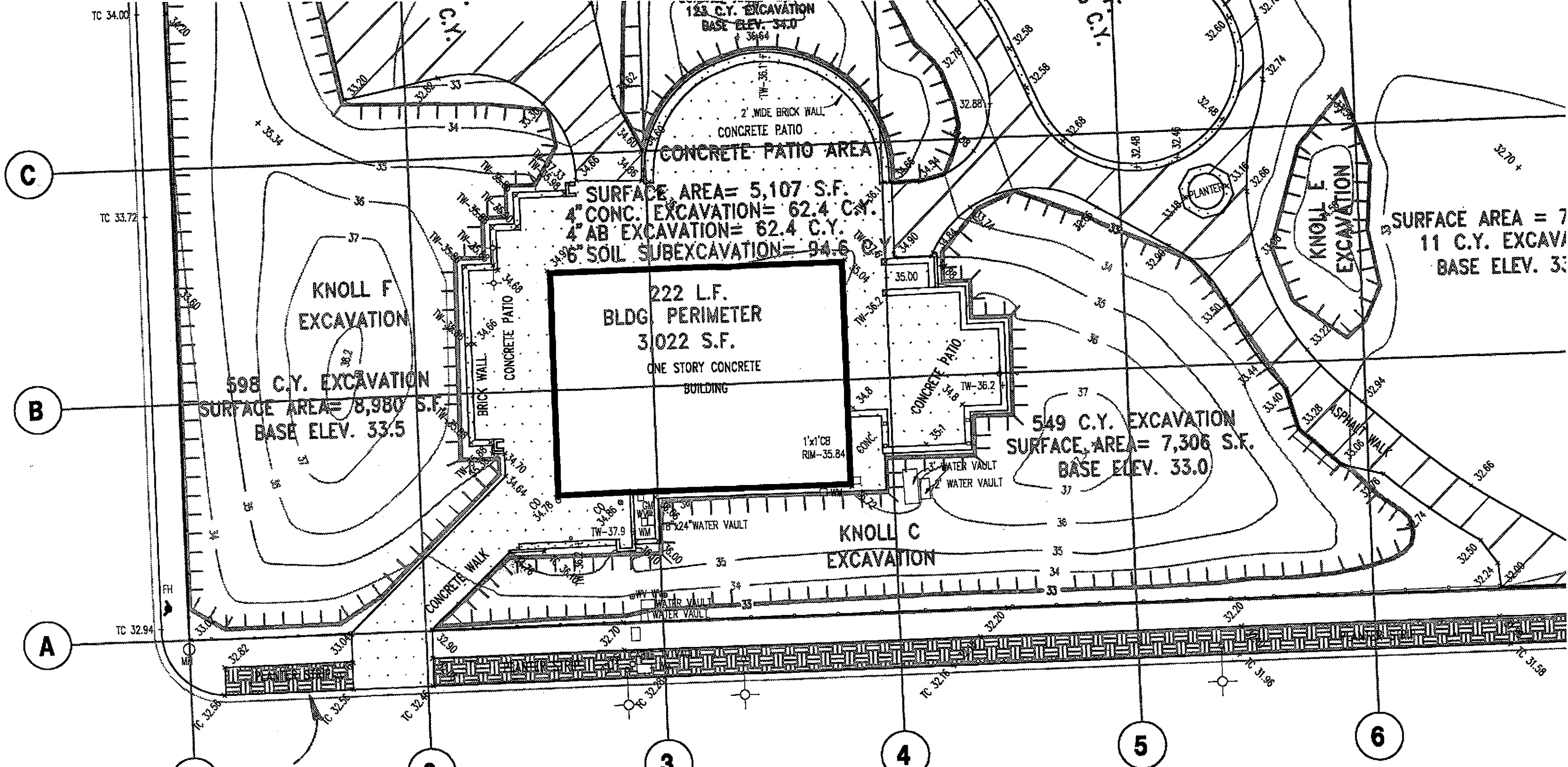
8-20-93 01:27PM WCC OAKLAND



SCALE: 1" = 20'



PLAN



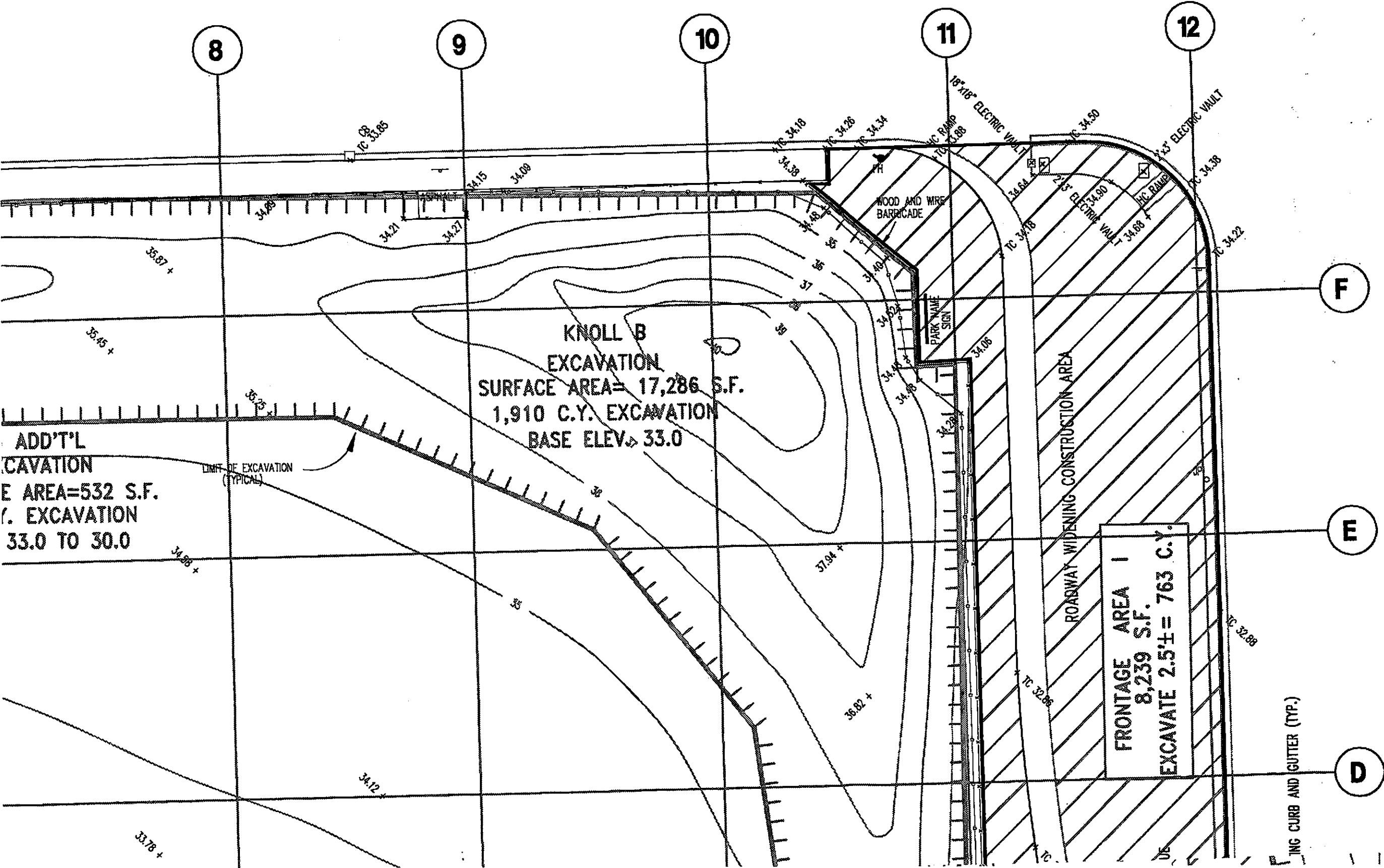
1 PLANTER AREA I EXCAVATION
SURFACE AREA = 153 S.F.
3" AB REMOVAL = 1.4 C.Y.
6" SOIL SUBEXCAVATION = 2.8 C.Y.

SUNNYSIDE

BENCH MARK

BM 13Db - ELEVATION 36.035 - CITY OF OAKLAND DATUM. CUT "T" AT NORTHWEST CORNER OF THE BOTTOM RED CONCRETE STEP OF HOUSE NUMBER 9521 BANCROFT

AVENUE



ADD'T'L
CAVATION
E AREA=532 S.F.
E. EXCAVATION
33.0 TO 30.0

KNOLL B
EXCAVATION
SURFACE AREA= 17,286 S.F.
1,910 C.Y. EXCAVATION
BASE ELEV. 33.0

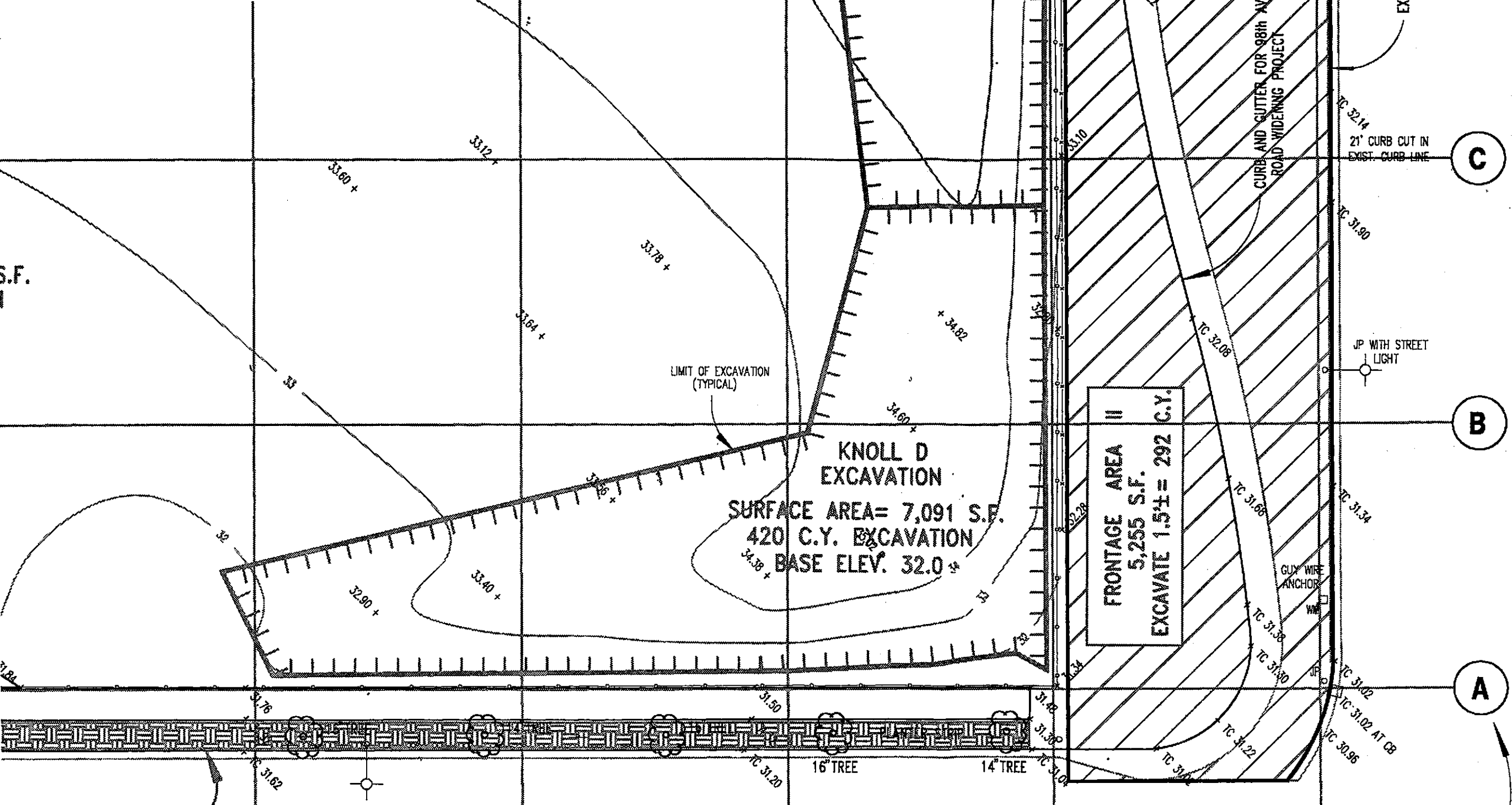
FRONTAGE AREA I
8,239 S.F.
EXCAVATE 2.5'± = 763 C.Y.

SHEET TITLE

TOPOGRAPHIC SURVEY
VERDESE R. CARTER PARK
OAKLAND, CALIFORNIA

AVENUE

98th A



PLANTER AREA II EXCAVATION
 SURFACE AREA= 2,658 S.F.
 SOIL REMOVAL= 24.6 C.Y.
 SUBEXCAVATION= 49.2 C.Y.

KNOLL D EXCAVATION
 SURFACE AREA= 7,091 S.F.
 420 C.Y. EXCAVATION
 BASE ELEV. 32.0 ±

FRONTAGE AREA II
 5,255 S.F.
 EXCAVATE 1.5' ± = 292 C.Y.

50' BY 50' ALPHANUMERIC GRID

Harris Consulting Group, Inc.

1333 BROADWAY, SUITE 1050
 OAKLAND, CA 94612-1926

ISSUE DATE REVISIONS

ISSUE DATE	REVISIONS
JOB NO.	DRN: CJ
CHKD:	

SHEET NO. 3

OF 3

STREET