



# Health Care Services

## Alameda County Environmental Health Meeting Sign-In Sheet

Schwabacher / Frey  
5733 Peladeau Street, Emeryville, CA

Thursday, March 05, 2015  
10:00 AM

NAME	COMPANY	MAILING ADDRESS	PHONE	Signature	E-MAIL
Dilan Roe	Alameda County	1131 Harbor Bay Pkwy, Suite 250 Alameda, CA 94502	(510) 567-6767		dilan.roe@acgov.org
Mark Detterman	Alameda County	1131 Harbor Bay Pkwy, Suite 250 Alameda, CA 94502	(510) 567-6876		mark.detterman@acgov.org



**Erler & Kalinowski,  
Inc.**  
Consulting Engineers and Scientists  
1870 Ogden Drive  
Burlingame, California 9 4010-5306  
(650) 292-9100 • Cell (415) 385-2326  
ejames@ekiconsult.com • Fax (650) 552-9012

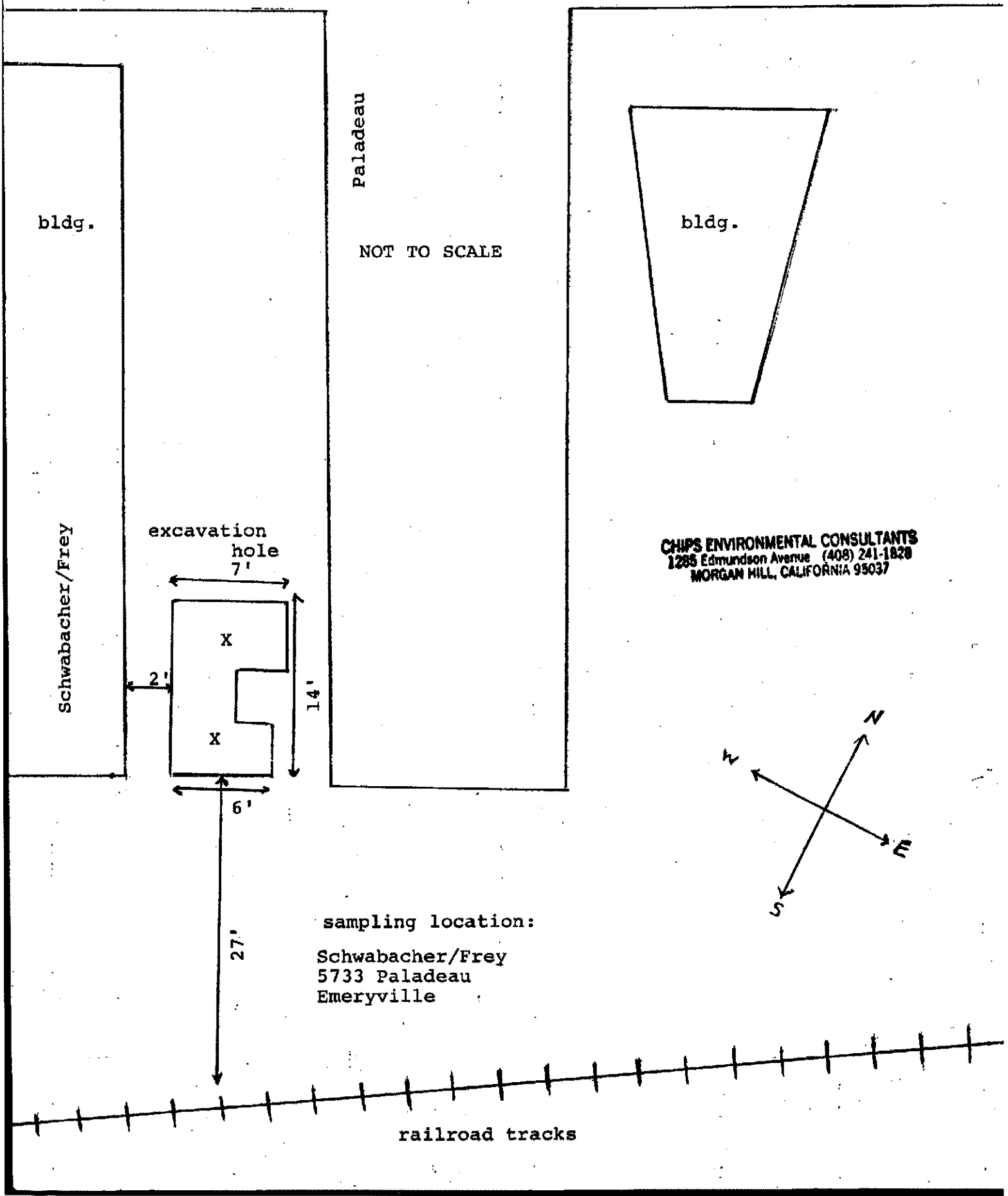
**Earl James, P.G.**  
Vice President

**Schmier Industrial Properties**  
Kenneth J. Schmier

1475 Powell St., Suite 201  
Emeryville, CA 94608  
Email: kenschmier@aol.com

Tel: (510) 652-6086  
Cell: (510) 551-3176  
Fax: (510) 652-0929

Powell St.



bldg.

Paladeau

NOT TO SCALE

bldg.

Schwabacher/Frey

excavation  
hole  
7'

2'

X

X

14'

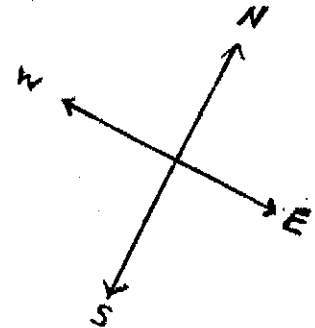
6'

27'

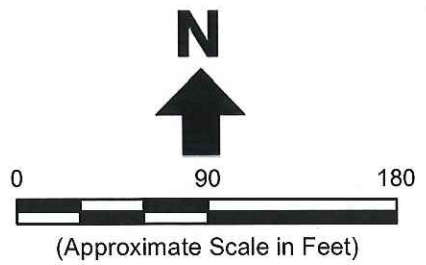
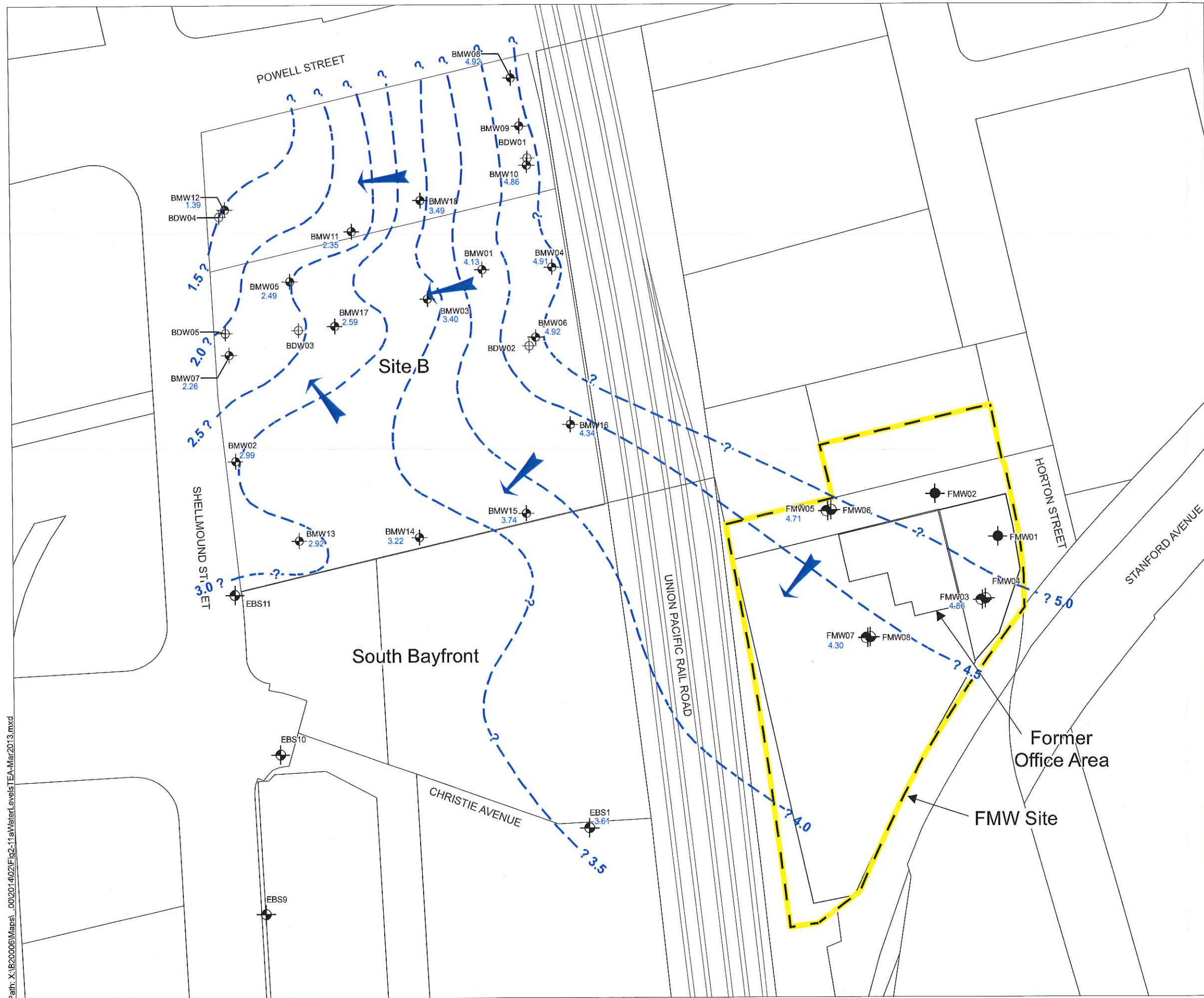
sampling location:

Schwabacher/Frey  
5733 Paladeau  
Emeryville

CHIPS ENVIRONMENTAL CONSULTANTS  
1285 Edmundson Avenue (408) 241-1828  
MORGAN HILL, CALIFORNIA 95037



railroad tracks



- Legend**
- FMW Groundwater Monitoring Well - TEA Unit
  - FMW Groundwater Monitoring Well - CQa Unit
  - FMW Groundwater Monitoring Well - TEA and CQa Units
  - Site B Groundwater Monitoring Well - TEA Unit
  - Site B Groundwater Monitoring Well - CQa Unit
  - South Bayfront Groundwater Monitoring Well - TEA Unit
  - 3.0- Approximate Groundwater Elevation Contour (feet msl)
  - 3.96 Groundwater Elevation (feet msl)
  - Hydraulic Gradient Direction

**Abbreviations**  
 CQa = Coarse Quaternary Alluvial Unit (bottom elevation ranges from approximately -28 to -36 feet msl)  
 feet msl = feet above mean sea level  
 FMW = Former Marchant/Whitney  
 TEA = Transitional Estuarine-Alluvial Unit (bottom elevation ranges from approximately -4 to -18 feet msl)

- Notes**
1. All locations are approximate.
  2. Potentiometric surface measured on 13 March 2013.

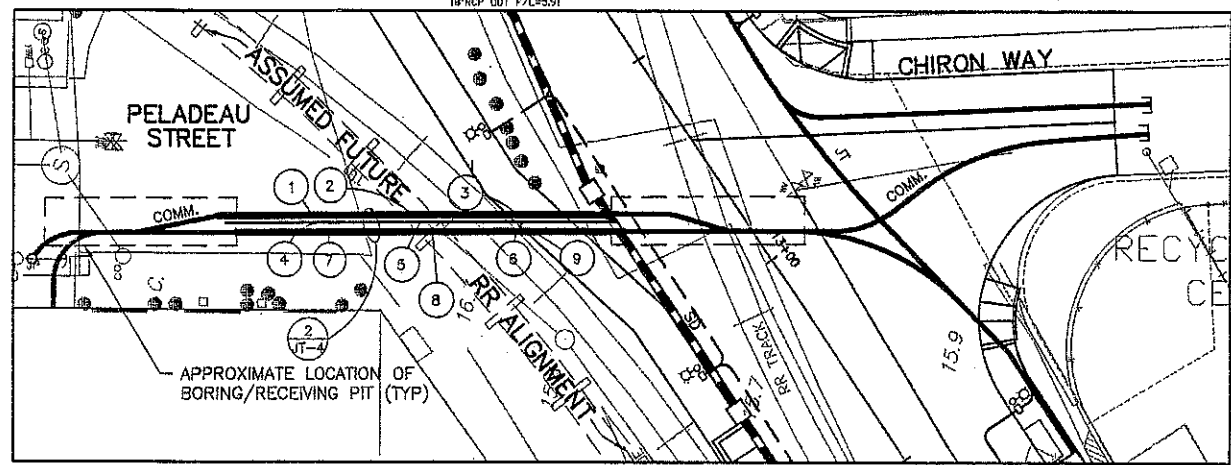
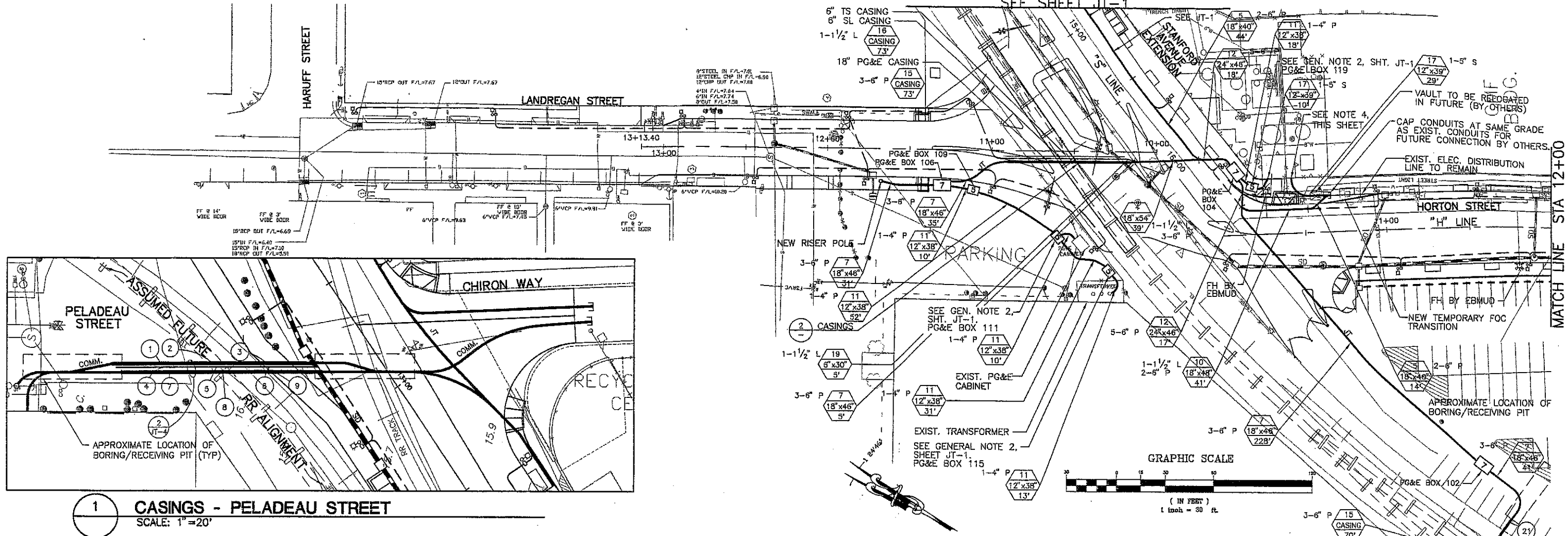
## Erler & Kalinowski, Inc.

Potentiometric Surface Contours in TEA Unit  
 March 2013

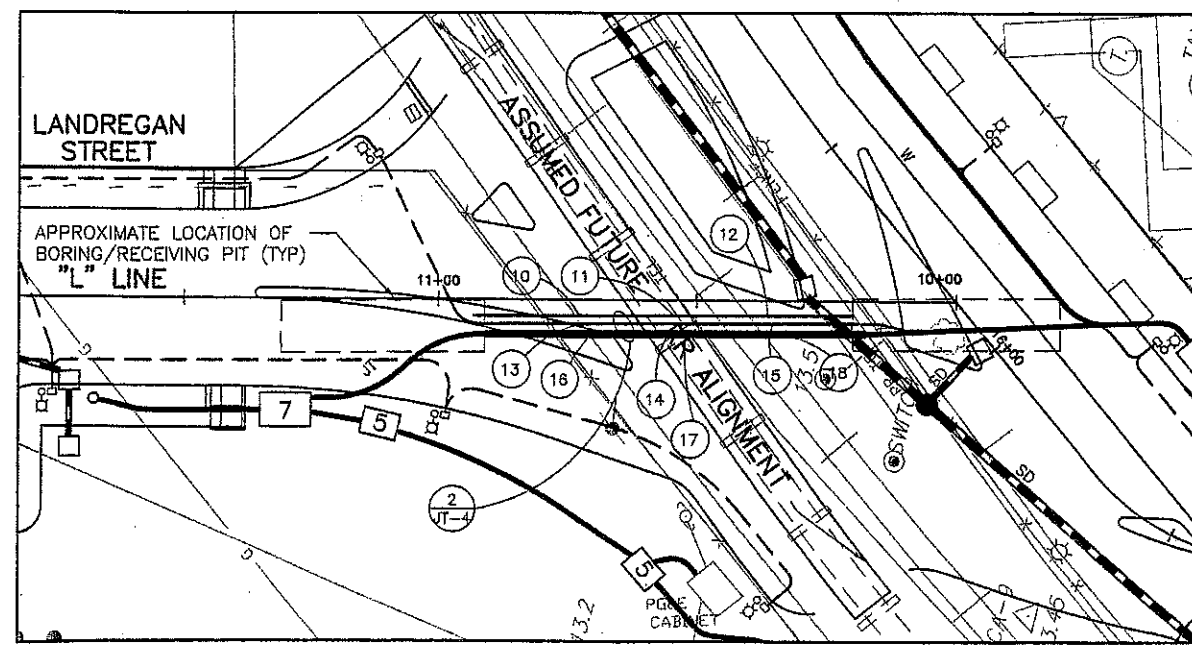
Former Marchant/Whitney Site  
 Emeryville, CA  
 February 2014  
 EKI B20006.00  
 Figure 2-11a

Path: X:\B20006\Maps\...00\201402\Fig2-11a\WaterLevels\TEA-Mar2013.mxd

MATCH LINE  
SEE SHEET JT-1



1 CASINGS - PELADEAU STREET  
SCALE: 1"=20'



2 CASINGS - LANDREGAN STREET  
SCALE: 1"=20'

**STATIONING FOR CASINGS**

NUMBER	** STATION	OFFSET
1	10+83.95 "P"	10.00 LT.
2	10+62.16 "P"	9.78 LT.
3	10+40.37 "P"	9.69 LT.
4	10+82.27 "P"	11.56 LT.
5	10+60.57 "P"	11.37 LT.
6	10+38.86 "P"	11.18 LT.
7	10+80.06 "P"	13.54 LT.
8	10+58.41 "P"	13.35 LT.
9	10+36.87 "P"	13.16 LT.

**STATIONING FOR PG&E BOXES**

PG&E BOX #	STATION
102	11+53 "H"
104	18+28 "S"
106	11+30 "L"
109	11+11 "L"
111	15+90 "S"
115	16+25 "S"
119	16+63 "S"

**PG&E CASING WEST OF HORTON STREET**

NUMBER	STATION	OFFSET
10	11+22.53 "L"	3.11 LT.
11	10+45.45 "L"	3.02 LT.
12	10+36.38 "L"	2.93 LT.
13	10+71.51 "L"	4.80 LT.
14	10+53.44 "L"	4.41 LT.
15	10+35.36 "L"	4.42 LT.
16	10+70.16 "L"	6.00 LT.
17	10+92.08 "L"	6.42 LT.
18	10+34.00 "L"	6.42 LT.

- JOINT TRENCH NOTES - THIS SHEET**
- SEE 20 SCALE, THIS SHEET FOR DIMENSIONING DETAILS OF CASINGS ACROSS RAILROAD.
  - SEE SHEET JT-4 FOR CASING JACK AND BORE DETAIL.
  - STATIONING FOR CASINGS WAS DETERMINED PRIOR TO CONSTRUCTION OF RAILROAD RELOCATION. RAILROAD RELOCATION TO BE DONE BY OTHERS. FUTURE ALIGNMENT SHOWN IS APPROXIMATE ONLY. THE AS-BUILT LOCATION SHALL BE VERIFIED BY THE CONTRACTOR PRIOR TO INSTALLATION OF CASINGS. MIDPOINT OF CASINGS SHOULD BE UNDER CENTERLINE OF RELOCATED TRACK. THE ENDPOINTS OF THE CASINGS SHALL BE 15' FROM THE RAILROAD TRACK CENTERLINE, MEASURED PERPENDICULAR TO THE RAILROAD CENTERLINE. LIMITS OF BORING AND RECEIVING PIT SHOWN ARE APPROXIMATE. FINAL LOCATION TO BE DETERMINED BY THE CONTRACTOR TO FACILITATE THE INSTALLATION OF EACH CASING.
  - COORDINATE WITH PG&E FOR CONDUIT TO EXISTING TRANSFORMER INTERFACE ON LANDREGAN STREET.
  - LIMIT OF BID ALTERNATE 1 FOR THE UNDERGROUND WORK IS THE NORTH END OF THE CASINGS ON LANDREGAN STREET.

THIS PLAN ACCURATE FOR JOINT TRENCH ONLY.

DRAWN BY: TLC  
 DESIGNED BY: TLC  
 CHECKED BY: MJM  
 PLOT DATE: 8-17-98  
 DATE: 10-27-97  
 FILE NAME: CH-JT02R  
 XREFS:

**Harris & Associates**  
 220 Mason Circle, Concord, CA 94520

JOINT TRENCH LAYOUT

IMPROVEMENT PLANS FOR  
 HORTON STREET, LANDREGAN  
 STREET, STANFORD  
 AVENUE, AND 53RD STREET  
 PROJECT NO. EPW 101-98



CITY OF EMERYVILLE  
 DEPARTMENT OF PUBLIC WORKS  
 2200 POWELL STREET, 12TH FLOOR  
 EMERYVILLE, CA 94608  
 TEL (510) 596-4330

REV NO	DESCRIPTION	DATE	BY
0	ISSUED FOR CONSTRUCTION	17JUNE98	



JOB NO. 97033.01  
 DWG. NO.  
**JT-2**  
 HORIZ. 1"=30'  
 VERT. NO SCALE  
 SHEET 24 OF 42