

12/12/95



12/12/95



12/12/95

NOV. 1995



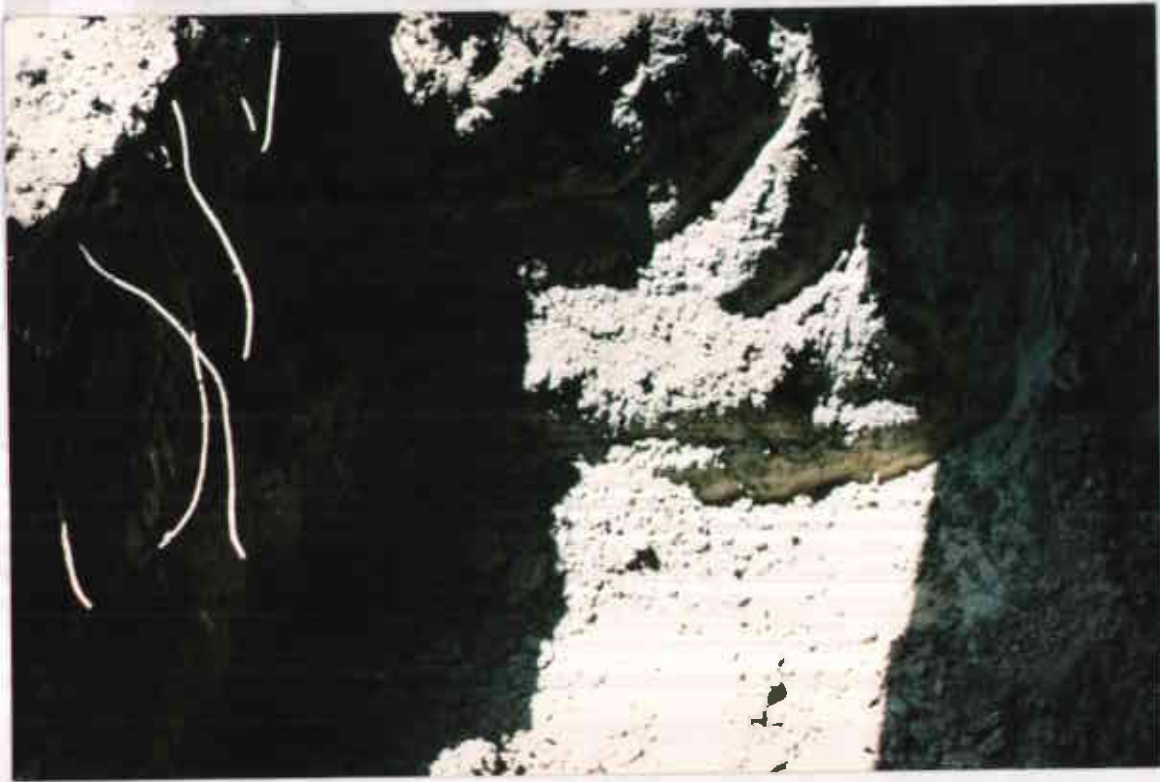


































































































































































9/22/95

Del Monte
1250 Park Ave. Emeryville

On site - to investigation complaints
re: the soil at the site

- all stockpiled soil are covered with
visqueen.

- will need to discuss the status of the
remediation of Berion Cliver.



9/22/95

Del Monte - 1250 Park Ave.
Emeryville



9/22/95

Del Monte Site
1250 Park Ave. Emeryville