



May 14, 2004

**241.055.01.004**

Ms. Donna Drogos  
Environmental Health Services  
Alameda County  
1131 Harbor Bay Parkway, 2nd Floor  
Alameda, California 94502

RECEIVED  
MAY 13 2004  
ENVIRONMENTAL HEALTH SERVICES

**Transmittal**  
**Free-Phrase Hydrocarbon Product Mitigation Plan**  
**Bay Center Apartments Phase I**  
**Christie Avenue and 64<sup>TH</sup> Street**  
**Emeryville, California**

Dear Ms. Drogos:

As we discussed by telephone earlier this week, enclosed please find a draft Free Product Mitigation Plan (FPMP) to address free-phase petroleum hydrocarbon product present at the subject site. The product appears to be associated with former petroleum fuel underground storage tanks removed from the site in the late 1980s. We would like to meet with you in the near future to discuss the findings of recent site investigation activities and this mitigation plan. We will contact you in the next few days to schedule a meeting. Please call us at your convenience if you have any questions.

Sincerely,

**PES ENVIRONMENTAL, INC.**

William W. Mast, R.G.  
Associate Engineer

cc: Ignacio Dayrit – City of Emeryville (by email)  
Matt Field – JS Bay Center Associates

Enclosure: Draft Free-Phrase Hydrocarbon Product Mitigation Plan, Bay Center  
Apartments Phase I, dated April 30, 2004

24105501L002.doc



April 30, 2004

**D R A F T**

**241.055.01.003**

Mr. Matt Field  
JS Bay Center Associates  
100 Bush Street, 26<sup>th</sup> Floor  
San Francisco, California 94104

Mr. Robert Wyatt  
Allen Matkins Leck Gamble & Mallory, LLP  
333 Bush Street, 17th Floor  
San Francisco, California 94104

**Subject: Free-Phase Hydrocarbon Product Mitigation Plan  
Bay Center Apartments Phase I  
Christie Avenue and 64<sup>TH</sup> Street  
Emeryville, California**

Dear Messrs. Field and Wyatt:

At your request, PES Environmental, Inc. has prepared this Free Product Mitigation Plan (FPMP) to address free-phase petroleum hydrocarbon product present at the subject site associated with former petroleum fuel underground storage tanks. JS Bay Center Associates (Bay Center) has retained PES to provide environmental services in connection with the property known as Bay Center Apartments Phase I, located southeast of the intersection of Christie Avenue and 64<sup>th</sup> Street.

The goal of this FPMP is to present a phased approach for removing petroleum hydrocarbon product floating on groundwater at the site. Removing the free-phase product is an appropriate step in moving towards regulatory agency case closure status for the site.

#### **SITE BACKGROUND**

The site is located in a filled area of Emeryville that was formerly tidal flats. As Emeryville grew, the tidal flats were filled, predominantly with construction-type debris (e.g. wood, bricks, soil, etc.). From approximately 1958 through 1986, the property was occupied by Delta and Garrett Trucking Lines. As part of site redevelopment activities in 1986, the trucking facility structures were demolished, the associated underground fuel storage tanks (USTs) were removed, soil affected with hydrocarbons was excavated and disposed off the site, and the site was graded for construction. Bay Center Apartments Phase I were constructed in 1987. The current layout of the site is shown on Plate 2.

During the period of use as a trucking terminal, the site contained several UST fields used to store petroleum hydrocarbon fuels. One large UST field contained four 12,000-gallon diesel tanks, two 10,000-gallon diesel tanks, and one 6,000-gallon diesel tank. The two smaller tank fields each contained one 10,000-gallon diesel tank. In addition, at the adjacent property to the east (Bay Center Apartments Phase II) there were two tank fields containing a total of three

Messrs. Field & Wyatt  
April 30, 2004  
Page 2

## DRAFT

USTs were decommissioned in 1986 by removal of the USTs and appurtenances, as part of site preparation for construction of the Bay Center Apartments<sup>1</sup>. The approximate locations of the large UST field (designated Tank Pit TC-1), the two small UST fields (designated Tank Pit A and Tank Pit B), and the two waste oil tank pits at Bay Center Apartments Phase II (designated Tank Pit WO-1 and Tank Pit W)-2) are shown on Plate 2.

Historical environmental reports available for PES' review indicate that environmental investigations conducted in 1986 identified the presence of free-phase petroleum hydrocarbons in the vicinity of Tank Pit TC-1<sup>2</sup>. Tabulated historical soil and groundwater laboratory analytical data, and maps of sampling locations are provided in PES' April 5, 2004 site investigation status report, which is attached as an Appendix.

A groundwater pumping and treatment (P&T) system was subsequently installed and operated at the site from July 1990 through March 1991<sup>3</sup>. During this period, approximately 1,000,000 gallons of groundwater from recovery well RW-1 (Plate 2) were extracted, treated and discharged under permit to the regional sanitary sewer system (EBMUD) and the P&T system recovered approximately 100 gallons of free-phase petroleum hydrocarbons from RW-1. According to a P&T quarterly report, the majority of the groundwater was extracted during the period from July until November 1990, when corrosion and other mechanical problems with the system transfer pump caused the system to fail. Product recovery appears to have continued at the recovery well until March 1991, at which time operation of the P&T system was terminated. No further groundwater remedial activities are known to have been performed since that time.

To assess current groundwater conditions and evaluate for the continued presence of free-phase petroleum hydrocarbon product, PES recently conducted several investigations to supplement the historical environmental data. The results of these investigations were summarized in an April 5, 2004 status report<sup>4</sup>. As noted above, a copy of the report is included in the Appendix.

The historical data and PES' recent investigation findings indicate that free-phase petroleum hydrocarbon product is present in a portion of the site just south of Tank Pit TC-1. Measured product thickness has ranged from approximately 0.9 to 1.6 feet in well RW-1. In nearby

---

<sup>1</sup> Earth Metrics Inc., 1986. *Soils and Groundwater Contamination Characterization of Bay Center Site in Emeryville, California*. August 20.

<sup>2</sup> Aqua Science Engineers, 1986. *A Proposal for Installing a Fuel Contamination Recovery System at The Bay Center Project, Emeryville, California*. August 27

<sup>3</sup> Groundwater Technology, 1991. *Quarterly Status Report, Bay Center Project, Christie Avenue and 64<sup>th</sup> Street, Emeryville, California*. April.

<sup>4</sup> PES Environmental, 2004. *Status Report, Investigation of Subsurface Petroleum Hydrocarbon Residuals, Bay Center Apartments, Christie Avenue and 64<sup>th</sup> Street, Emeryville, California*. April 5.

Messrs. Field & Wyatt  
April 30, 2004  
Page 3

## **DRAFT**

temporary well casings MW-8 and MW-10 product thickness has ranged from trace levels to approximately 1.8 feet.

### **SCOPE OF WORK**

This FPMP provides a phased approach to treatment of the free-phase petroleum hydrocarbon product present at the site. Previous aggressive and costly automated efforts to remove the product were marginally successful and interrupted by mechanical difficulties. The scope of this FPMP consists of: low-cost product removal activities; regular evaluation of the product removal data to evaluate progress and performance; and evolution of the mitigation program to increase or decrease activities, as appropriate, to optimize product recovery. Detailed descriptions of these tasks are provided below.

#### **Implement Product Removal Actions**

The data from the 1990 through 1991 P&T system suggest that this technology may not be an effective or cost-efficient procedure for the removal of product beneath the site. For this reason, the initial approach to the current site mitigation approach will consist of manual product removal at existing recovery well RW-1 (Plate 2). This approach has been designed to: (1) commence product removal activities at the site; (2) obtain information regarding the rate of recovery of product in RW-1; and (3) minimize the volume of waste generated at the site (i.e., by not extracting large volumes of groundwater).

Manual product removal will be performed three times per week for three weeks, followed by twice per week for three weeks. After the initial six-week period, the results of the product recovery activities will be evaluated and a schedule for periodic product removal events will be developed. If additional recovery wells are installed in the future, these wells will be added to the ongoing routine product removal activities. Manual removal of product will be accomplished using pumps, bailers, or other devices as needed to maximize product removal while minimizing the generation of groundwater wastes.

At three-month intervals of product removal, PES will evaluate the cost and efficacy of manual extraction as a permanent remedial action at the site. The primary criteria for evaluating manual extraction will be:

- 1) Projected product recovery at the site by manual extraction shall exceed the 100 gallons per year extracted by groundwater P&T during the 1990 through 1991; and,

Messrs. Field & Wyatt  
April 30, 2004  
Page 4

**D R A F T**

2) The cost per gallon to conduct periodic manual extraction operations is less than the cost to implement automated product-only extraction operations (i.e., skimmer pumps), a full-scale P&T system, or other remediation technologies.

If these criteria are met, the routine manual extraction events will be continued for another three months and reevaluation performed. PES will routinely reassess the product removal operations to adjust the schedule of extraction events, evaluate the need for additional extraction wells, evaluate the need to automate the extraction of product, and/or evaluate the need to reinstall a groundwater P&T system or other remediation technology at the site. The results and recommendations of the evaluation will be submitted as an addendum to this FPMP along with a schedule for the implementation of alternative treatment options, as appropriate.

### Product Sampling

As described in the Appendix, chemical analysis of product from well RW-1 was recently performed. In addition, a sample of the product will be analyzed for viscosity and density, to assist in evaluating product migration, recharge to recovery wells, and further evaluation of treatment technologies, if necessary.

PES is pleased to have the opportunity to prepare this FPMP for Bay Center Apartments. Please call us at your convenience if you have any questions.

Sincerely,

PES ENVIRONMENTAL, INC.

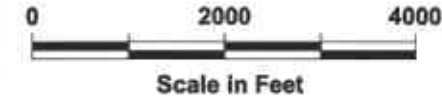
**D R A F T**

William W. Mast, R.G.  
Associate Engineer

**D R A F T**

Robert S. Creps, P.E.  
Principal Engineer

Attachments: Plate 1 - Site Location Map  
Plate 2 - Sampling Location Map  
Appendix - PES Environmental, Inc. April 5, 2004 Memorandum

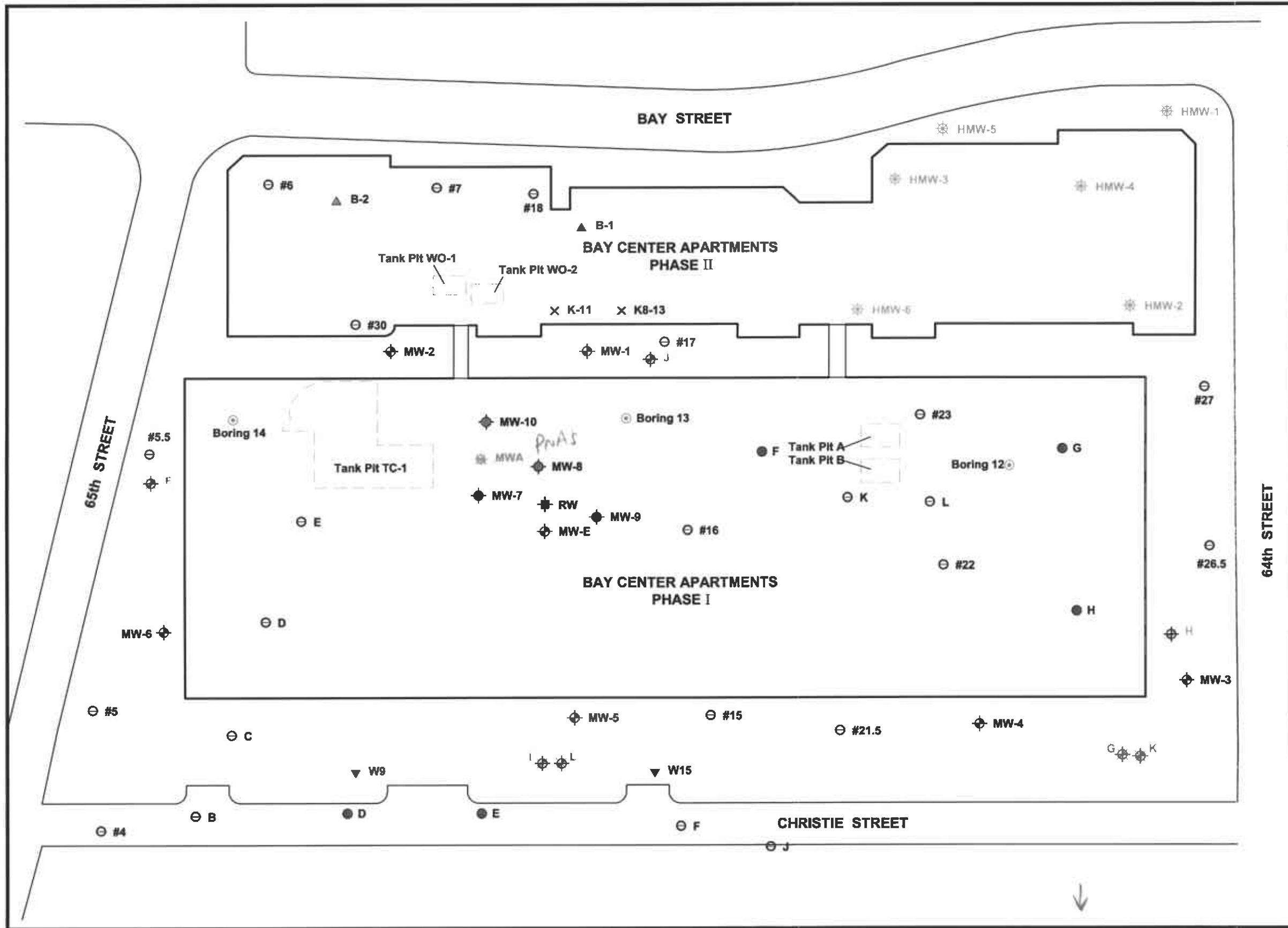


U.S.G.S. Topo Map - Oakland West, California, 7.5-minute quadrangle. Map version 1997, current as of 1993

**Site Location Map**  
 Free-Product Mitigation Plan  
 Bay Center Apartments  
 Emeryville, California

FIGURE  
**1**





- ⊕ Well (GTI 1989)
  - ⊕ Well (Destroyed) (GTI 1987, 1989)
  - ⊕ Recovery Well (GTI, 1987)
  - ▲ Geoprobe (HLA, 1992)
  - ⊕ Well (Destroyed) (HLA, unknown)
  - ⊕ Boring (Geomatrix, 1988)
  - Boring (GSF, 1988)
  - × Boring (HLA, 1994)
  - ▼ Geoprobe (EarthMetrics, 1986)
  - ⊕ Well (Destroyed) (EarthMetrics, 1986)
  - ⊕ Temporary Well Casing (PES, 2004)
  - ⊕ Well (AquaScience, 1986)
- ⊕ Approximate Location of UST Excavation (AquaScience, 5-8-86)
- Tank Pit TC-1**  
 Four 12,000-gallon diesel  
 Two 10,000-gallon diesel  
 One 6,000-gallon gasoline
- Tank Pit WO-1**  
 One 6,000-gallon waste oil
- Tank Pit WO-2**  
 One 4,000-gallon waste oil  
 One 1,000-gallon waste oil
- Tank Pit A**  
 One 10,000-gallon diesel
- Tank Pit B**  
 One 10,000-gallon diesel

*La Coste St.*

**APPENDIX**

**PES ENVIRONMENTAL, INC. APRIL 5, 2004 MEMORANDUM**





---

## Memorandum

**Date:** April 5, 2004

**To:** Matt Field  
JS Bay Center Associates

Robert Wyatt  
Allen Matkins Leck Gamble & Mallory, LLP

**From:** Will Mast & Robert Creps  
PES Environmental, Inc.

**Subject:** Status Report  
Investigation of Subsurface Petroleum Hydrocarbon Residuals  
Bay Center Apartments  
Christie Avenue and 64<sup>th</sup> Street  
Emeryville, California

**PES Project:** 241.055.01.002

---

On behalf of JS Bay Center, PES Environmental, Inc. (PES) recently conducted investigations at the Bay Center Apartments Phase I, located at Christie Avenue and 64th Street in Emeryville, California ("Site"). The investigations were conducted in several phases to assess the site for the presence of separate-phase product and overall groundwater conditions. In addition, PES conducted investigations to locate missing monitoring wells MW-1 and MW-2, and compiled historical analytical data and maps of prior sampling locations.

This memorandum describes the sampling methods employed during the investigation, presents tabulated results of historical and recent testing, and provides figures showing the sampling locations.

### INVESTIGATION FOR MISSING WELLS

A drawing prepared during construction of the Bay Center Apartments Phase II, located immediately east of the subject property, appeared to indicate that wells MW-1 and MW-2 had been retained and protected for future groundwater monitoring activities (Harding Lawson Associates, 1994). PES utilized this map and inspected the property to assess for the presence of the wells. It appeared that the wells, if present, were likely beneath the vegetative topsoil within landscaping areas in the alley between Bay Center Apartments Phase I and Phase II.

Several methods were used to evaluate for wells MW-1 and MW-2. Initially, a narrow-diameter fiberglass probe was used to penetrate the soil surface at numerous points in the

Mr. Matt Field  
Mr. Robert Wyatt  
April 5, 2004  
Page 2

vicinity of the mapped well locations. Given the presence of shallow-rooted birch trees in the vicinity, the results of the probing effort were inconclusive. Subsequently, a hand-held metal detector was used over an approximate 300 square foot area in the vicinity of each mapped well location. Given the presence of irrigation piping and valves, as well as the presence of metallic objects within the shallow fill, the metal detector sounded at numerous locations. One of the locations where the metal detector sounded corresponded with the mapped location of well MW-2. That location was selected for excavation with hand tools.

Using shovel and picks, surficial vegetation was removed and the soil was excavated to a depth of up to 3 feet over an area of 2.5 feet in diameter. Fill materials containing brick and metal were encountered, as well as tree roots and rocks up to 1-foot diameter. Using the construction drawing to identify the probable location of MW-1, excavation activities were repeated at well MW-1. Substantial chunks of asphalt were encountered at this location.

No evidence of monitoring well casings, Christy boxes or other monitoring well features were encountered at either location. At the mapped and excavated location of MW-2, an area consisting primarily of concrete was encountered at the bottom of the excavation area. However, given the presence of nearby irrigation boxes and large rocks, it was not possible to expose the full extent of this feature. Furthermore, it could not be determined whether the concrete was debris or intact and possible representative of backfilling of the well bore after casing removal. Each excavation area was subsequently backfilled using the removed materials.

## **SUBSURFACE INVESTIGATION**

### **Temporary Well Casing Installation**

On March 1 and March 5, 2004, under PES' supervision our subcontractor, Resonant Sonic International (RSI) of Woodland, California, installed four temporary well casings at the site. The locations of the temporary wells (MW-7 through MW-10) are shown on Plate 2.

Prior to initiating drilling activities, PES retained ForeSite of Pleasant Hill, California, to clear the boring locations of subsurface utilities. As an additional precaution, the first few feet of each boring were advanced using hand auger equipment. At approximately 3 feet below ground surface (bgs) at each location, a hard gravel layer was present. This layer was penetrated using the Geoprobe® direct-push drilling rig. The rig advanced a four-foot long, 2-inch diameter Macro-Core sampler with acetate liners to collect continuous soil samples. The lithology of each borehole was logged according to the Unified Soil Classification System (USCS). Additionally, soil samples from each lithologic interval were placed in Ziploc®-style

Mr. Matt Field  
Mr. Robert Wyatt  
April 5, 2004  
Page 3

baggies, allowed to sit for a period of 15 to 20 minutes, and screened for volatile organic compounds (VOCs) using a photoionization detector (PID). Lithologic logs, including the PID screening results, are provided in Appendix A.

Three of the borings were advanced to 20 feet bgs. One boring (well MW-8) was terminated at 16 feet bgs because: (1) significant quantities of separate-phase petroleum product was present; (2) ample groundwater and evidence of a significant water-bearing zone were present in the soil samples; and (3) a potential confining clay layer was observed at approximately 15 feet bgs.

At each monitoring well, ¾-inch slotted PVC casing was installed from the bottom of the boring to 5 feet bgs. Blank ¾-inch casing was installed from 5 feet bgs to the surface. RMC Lonestar #2/12 sand was placed from the bottom of each borehole to 4 feet bgs. A bentonite pellet seal was placed from 3 to 4 feet bgs. A cement seal was placed from approximately 1 to 3 feet bgs. Each well was completed with a 5-inch diameter Christy box set in concrete to match the surrounding ground surface. Well construction details are summarized in Table 1.

#### Subsurface Conditions

The subsurface soil consisted mostly of fill with silt, sand and gravel and fragments of brick, glass, and metal to approximately 16 feet bgs. Native silts and clays were encountered beneath this depth in the three 20-foot borings. Groundwater was generally encountered at 8 to 12 feet bgs. Free product was encountered in wells MW-8 and MW-10.

### **WELL SAMPLING ACTIVITIES**

#### Well Development and Sampling

Blaine Tech Services (Blaine Tech) of San Jose, California, was retained to develop and sample the historical wells on January 21, 2004. Well MW-E was not developed or sampled due to a bent casing at approximately 3 feet bgs. Additionally, well MW-3 was not developed or sampled due to the presence of viscous "tar-like" product in the bottom of the well casing. Monitoring wells MW-4, MW-5 and MW-6 were each surged for 15 minutes using a 2-inch surge block. After surging, ten casing volumes of groundwater was purged from each well using positive air displacement. Water quality parameters including temperature, pH, conductivity, and turbidity were logged at regular intervals. After purging was complete, samples were collected from the three wells using new disposable bailers and decanted into laboratory supplied sample containers.

Mr. Matt Field  
Mr. Robert Wyatt  
April 5, 2004  
Page 4

Groundwater samples were analyzed for benzene, toluene, ethylbenzene and xylenes (BTEX), methyl tert-butyl ether (MTBE) and total petroleum hydrocarbons quantified as gasoline (TPHg) by U.S. EPA Test Method 8260), and total petroleum hydrocarbons quantified as diesel and motor oil (TPHd and TPHmo) by U.S. EPA Test Method 8015M. Analytical results for groundwater are summarized in Table 2.

Well MW-E was developed by Blaine Tech on February 11, 2003. Blaine Tech repeatedly raised and lowered new ½-inch diameter flexible tubing equipped with a check valve to trap water in the tubing as it was being raised and permitting water to enter the tubing as it was being lowered. The motion of the ½-inch tubing within the ¾-inch well allowed the well casing to be simultaneously surged and purged. Approximately 10 casing volumes of groundwater was removed. Also on February 11, Blaine Tech attempted to sample the product in wells MW-3 and RW-1. It was not possible to collect a product sample at well MW-3 because the material was settled on the bottom of the well and was too dense or tarry for the available sampling equipment. Blaine Tech collected a product sample from RW-1 by straining product off the sides of a disposable bailer into laboratory-supplied sample containers. That sample was analyzed for BTEX, MTBE, TPHg, TPHd and TPHmo by the methods described above. Analytical results for groundwater are summarized in Table 2, and product results are summarized in Table 3.

The temporary well casings (MW-7 through MW-10) were developed by Blaine Tech on March 10, 2004 using the ½-inch diameter flexible tubing and check valve method previously employed at MW-E. Approximately 10 casing volumes of groundwater was removed from each well. Well MW-7 dewatered twice during development; the three other wells did not dewater. During development, Blaine Tech recorded water quality parameters including: temperature, pH, electrical conductivity, and turbidity for wells MW-7 and MW-9. Due to the presence of free product that would have fouled the instrument probes, these parameters were not recorded for MW-8 and MW-10. Blaine Tech did make visual observations of water quality for all wells. The water from all wells was noted as turbid, with dark gray fine silt, with a heavy product sheen noted for wells MW-8 and MW-10.

On March 12, 2004, Blaine Tech returned to the site to collect groundwater and product samples, as appropriate, from the new temporary well casings. Grab samples of the product from wells MW-8 and MW-10 were collected before the wells were purged and groundwater samples were collected. Wells MW-7 through MW-9 were purged of three casing volumes of groundwater and sampled using disposable tubing fitted with a check valve. Well MW-10 was purged and sampled with a disposable bailer. The product and groundwater samples were analyzed for BTEX, MTBE and TPHg by the methods described above.

Mr. Matt Field  
Mr. Robert Wyatt  
April 5, 2004  
Page 5

In addition, a grab groundwater sample and product sample were from well MW-3. To collect the product sample, Blaine Tech used a peristaltic pump to fill a length of ½-inch tubing with product; however, the pump lacked sufficient suction to bring the material all the way to the surface. Blaine Tech scraped the product from the tubing into a laboratory supplied sample container. Blaine Tech also collected a grab groundwater sample from Well MW-E using the peristaltic pump. The product sample from well MW-3 was analyzed for BTEX, MTBE, TPHg, TPHd and TPHmo by the methods described above. The groundwater samples from wells MW-E and MW-3 were analyzed for BTEX, MTBE, and TPHg by the methods described above. Analytical results for groundwater are summarized in Table 2, and product results are summarized in Table 3.

Because insufficient sample volume was collected, Blaine Tech returned to the site on March 16, 2004 to collect additional groundwater sample volume from wells MW-7, MW-8, MW-9, MW-10, MW-3, and MW-E for analysis of TPHmo (TPHd was also quantified).

The results of groundwater samples are presented in Table 2, and results of product samples are presented in Table 3.

#### Well Surveying and Water-Level Gauging

Chapman Land Surveying Inc. of Concord, California, surveyed the top of casing elevations for all monitoring and recovery wells with respect to NAD 83 Datum. Blaine Tech conducted several rounds of water level gauging during sampling events in between January and March 2004. The depth to water/product, product thickness, and calculated water-level elevations for the monitoring wells from the various gauging events are presented in Table 4.

Separate-phase hydrocarbons were observed floating on the water in wells MW-8, MW-10, and RW-1. In addition, an unknown separate-phase hydrocarbon was observed at a depth of approximately 22 feet bgs.

#### Analytical Laboratory Testing Results

Current analytical results for groundwater and product testing are summarized in Tables 2 and 3, respectively. Petroleum hydrocarbons were detected in groundwater samples at the nine wells sampled. Concentrations were significantly lower in wells where no separate-phase product was observed, as expected. In wells MW-3 through MW-6, located around the perimeter of the site, concentrations of BTEX compounds ranged from non-detect to 1.6 µg/L. Concentrations for these compounds in wells MW-7, MW-10, and MW-E, located near the separate phase product but not containing product, ranged as follows: up to 340 µg/l benzene; up to 100 µg/L toluene; up to 14 µg/L ethylbenzene; and up to 56 µg/L total xylenes. MTBE

Mr. Matt Field  
Mr. Robert Wyatt  
April 5, 2004  
Page 6

was detected in one sample (MW-3) at a concentration of 0.97  $\mu\text{g/L}$ . Concentrations of total petroleum hydrocarbons quantified as gasoline (TPH-g) generally followed the same distribution pattern as benzene, with the exception of MW-3.

Total petroleum hydrocarbons quantified as diesel (TPH-d) were detected in the nine wells where groundwater samples were collected. TPH-d concentrations ranged from 190 micrograms per liter ( $\mu\text{g/L}$ ) in well MW-4 to 2,700  $\mu\text{g/L}$  in well MW-7, in wells where no separate-phase product was observed. In wells with product, the concentration of TPH-d ranged up to 840,000  $\mu\text{g/L}$  (MW-10). Concentrations of TPH quantified as motor oil generally reflected the same trends.

## COMPILATION OF HISTORICAL ANALYTICAL DATA & MAPS

Since approximately 1986, several subsurface investigations have occurred at the site to assess soil and groundwater conditions related to prior use of the site as a trucking facility. Historical analytical laboratory results for groundwater are summarized in Tables 5 and 6, and historical results for soil are summarized in Tables 7 and 8. A compilation of soil and groundwater sampling locations at the subject site is shown on Plate 1. Additionally, the approximate locations of the UST excavation areas are shown. However, it should be noted that among the historical environmental reports, there are sometimes wide discrepancies in the dimensions and configuration of the site and tank excavation areas.

Attachments: Table 1 – Construction Details – Existing Wells  
Table 2 – Summary of Analytical Results for Groundwater Samples  
Table 3 – Summary of Analytical Results for Product Samples  
Table 4 – Current Water-Level Elevation Data  
Table 5 – Summary of Historical Analytical Results for Water Samples - TPH, VOCs, Pesticides  
Table 6 – Summary of Historical Analytical Results for Water Samples - Metals & PAHs  
Table 7 – Summary of Historical Analytical Results for Soil Samples – TPH & VOCs  
Table 8 – Summary of Historical Analytical Results for Soil Samples - Metals & PAHs  
Plate 1 – Site Plan  
Appendix A – Logs of Monitoring Wells

**Table 1**  
**Construction Details - Existing Wells**  
**Bay Center Apartments - Phase I**  
**Emeryville, California**

Well Number	Date Installed	Diameter (in.)	TD (ft. bgs)	Screen (ft. bgs)	Comments
MW-1	12/15/1988	2	25	5 to 20	missing - can not locate
MW-2	12/15/1988	2	25	5 to 20	missing
MW-3	12/15/1988	2	25	5 to 20	
MW-4	12/16/1988	2	25	5 to 20	
MW-5	12/16/1988	2	25	5 to 20	
MW-6	12/16/1988	2	25	5 to 20	
MW-7	3/1/2004	0.75	20	5 to 15	
MW-8	3/1/2004	0.75	15.6	5 to 16	
MW-9	3/1/2004	0.75	19.1	5 to 15	
MW-10	3/5/2004	0.75	19.7	5 to 20	
MW-E	12/8/1986	2	47	7 to 40	
RW-1	unknown	10	30	? to ?	no well log or construction details found

Table 2  
 Summary of Analytical Results for Groundwater Samples  
 Bay Center Apartments - Phase I  
 Emeryville, California

Sample Location	Date Sampled	TPH-d (µg/L)	TPH-mo (µg/L)	TPH-g (µg/L)	Benzene (µg/L)	Toluene (µg/L)	Ethylbenzene (µg/L)	Total Xylenes (µg/L)	MTBE (µg/L)
MW-E	3/12/2004	610	NA	810	340	6.1	2.2	7.7	ND (1.0)
	3/16/2004	470	ND (500)	NA	NA	NA	NA	NA	NA
MW-3	3/12/2004	1,600	NA	440	ND (0.5)	ND (0.5)	1.5	ND (1.0)	0.97
	3/16/2004	3,400	3,900	NA	NA	NA	NA	NA	NA
MW-4	1/21/2004	190	ND (500)	ND (50)	ND (0.50)	ND (0.50)	ND (0.50)	ND (1.0)	ND (0.50)
MW-5	1/21/2004	830	ND (500)	ND (50)	ND (0.50)	ND (0.50)	ND (0.50)	ND (1.0)	ND (0.50)
MW-6	1/21/2004	200	ND (500)	ND (50)	1.1	0.87	ND (0.50)	1.6	ND (0.50)
MW-7	3/12/2004	2,700	NA	490	240	100	14	56	ND (2.5)
	3/16/2004	1,600	1,900	NA	NA	NA	NA	NA	NA
MW-8	3/12/2004	32,000	NA	51,000	19,000	720	2,400	3,300	ND (50)
	3/16/2004	140,000	56,000	NA	NA	NA	NA	NA	NA
MW-9	3/12/2004	890	NA	95	4.7	0.68	ND (0.50)	ND (1.0)	ND (0.50)
	3/16/2004	1,300	1,500	NA	NA	NA	NA	NA	NA
MW-10	3/12/2004	72,000	NA	14,000	4,000	77	200	120	ND (50)
	3/16/2004	840,000	ND (100,000)	NA	NA	NA	NA	NA	NA

**Notes:**

TPH-d = Total petroleum hydrocarbons quantified as diesel.

TPH-mo = Total petroleum hydrocarbons quantified as motor oil.

TPH-g = Total petroleum hydrocarbons quantified as gasoline.

MTBE = Methyl tert-butyl ether.

µg/L = Micrograms per liter.

ND (500) = Not detected at or above the indicated laboratory reporting limit.

NA = Not applicable.



**Table 3**  
**Summary of Analytical Results for Product Samples**  
**Bay Center Apartments - Phase I**  
**Emeryville, California**

Sample Location	Date Sampled	TPH-d (mg/kg)	TPH-mo (mg/kg)	TPH-g (mg/kg)	Benzene (mg/kg)	Toluene (mg/kg)	Ethyl-benzene (mg/kg)	Total Xylenes (mg/kg)	MTBE (mg/kg)
MW-3	3/12/2004	180,000	270,000	130,000	ND (250)	ND (250)	ND (250)	ND (250)	ND (250)
MW-8	3/12/2004	230,000	48,000	200,000	1,800	ND (500)	ND (500)	2,200	2,900
MW-10	3/12/2004	550,000	ND (60,000)	250,000	3,100	ND (500)	810	ND (500)	ND (500)
RW-1 = RW	2/11/2004	300,000	230,000	230,000	ND (500)	ND (500)	1,700	1,300	ND (500)

**Notes:**

TPH-d = Total petroleum hydrocarbons quantified as diesel.

TPH-mo = Total petroleum hydrocarbons quantified as motor oil.

TPH-g = Total petroleum hydrocarbons quantified as gasoline.

MTBE = Methyl tert-butyl ether.

mg/kg = Milligrams per kilogram.

ND (500) = Not detected at or above the indicated laboratory reporting limit.

NA = Not applicable.

Table 4  
 Current Water-Level Elevation Data  
 Bay Center Apartments - Phase I  
 Emeryville, California

Well Number	Date Measured	Top of Casing Elevation (feet MSL)	Depth to Immiscible Liquid (feet)	Thickness of Immiscible Liquid (feet)	Depth to Water (feet)	Water-Level Elevation (feet MSL)	Comments
MW-3	1/21/2004	16.96	--	--	8.10	8.86	thick tar at ~22 ft. bgs product at well bottom product at well bottom heavy sheen
	2/11/2004		22.12	--	7.90	9.06	
	3/12/2004		NM	--	8.04	8.92	
	3/16/2004		--	--	9.47	7.49	
MW-4	1/21/2004	16.74	--	--	7.04	9.70	
	3/12/2004		--	--	6.90	9.84	
MW-5	1/21/2004	17.11	--	--	8.23	8.88	
	3/12/2004		--	--	9.10	8.01	
MW-6	1/21/2004	17.22	--	--	6.70	10.52	
	3/12/2004		--	--	6.51	10.71	
MW-7	3/10/2004	18.09	--	--	9.98	8.11	pre-well development
	3/12/2004		--	--	9.93	8.16	
	3/16/2004		--	--	10.04	8.05	
MW-8	3/10/2004	18.25	9.79	1.83	11.62	6.63 *	pre-well development
	3/12/2004		8.15	1.17	9.32	8.93 *	
	3/16/2004		--	--	10.02	8.23 *	
MW-9	3/10/2004	18.27	--	--	9.39	8.88	pre-well development
	3/12/2004		--	--	9.38	8.89	
	3/16/2004		--	--	9.42	8.85	
MW-10	3/10/2004	18.21	8.82	0.04	8.86	9.35 *	pre-well development
	3/12/2004		8.24	1.63	9.87	8.34 *	
	3/16/2004		--	--	9.50	8.71 *	

Table 4  
 Current Water-Level Elevation Data  
 Bay Center Apartments - Phase I  
 Emeryville, California

Well Number	Date Measured	Top of Casing Elevation (feet MSL)	Depth to Immiscible Liquid (feet)	Thickness of Immiscible Liquid (feet)	Depth to Water (feet)	Water-Level Elevation (feet MSL)	Comments
MW-E	1/21/2004	17.80	--	--	9.95	7.85	
	2/11/2004		--	--	9.90	7.90	
	3/12/2004		--	--	9.92	7.88	
	3/16/2004		--	--	9.90	7.90	
RW-1	1/21/2004	18.32	9.00	1.22	10.22	8.10 *	
	2/11/2004		9.04	0.89	9.93	8.39 *	
	3/12/2004		5.62	1.58	7.20	11.12 *	

**Note:**

Top of casing elevations referenced to mean sea level (MSL), based on preliminary surveyor's report dated March 29, 2004.

SPH - Separate-phase hydrocarbon.

NM - Not measured.

**Table 5**  
**Summary of Historical Analytical Results for Water Samples - TPH, VOCs, Pesticides**  
**Bay Center Apartments - Phase I**  
**Emeryville, California**

Sampling ID	Date	Source	Total Petroleum Hydrocarbons (mg/L)				Volatile Organic Compounds (mg/L)				Pesticide/PCBs (mg/L)							
			TPH (undifferentiated)	TPH-g	TPH-mo	TPH-d	Benzene	Toluene	Ethylbenzene	Xylenes	DDE	DDD	DDT	A-BHC	B-BHC	G-BHC	D-BHC	PCB
"B"	08/27/86	(1)	0.15	--	--	--	0.002	0.006	NR	0.007	--	--	--	--	--	--	--	
"C"	08/27/86	(1)	0.11	--	--	--	<0.001	0.004	NR	0.005	--	--	--	--	--	--	--	
"D"	08/27/86	(1)	<0.05	--	--	--	<0.001	0.003	NR	0.003	--	--	--	--	--	--	--	
"E"	08/27/86	(1)	<0.05	--	--	--	<0.001	<0.001	NR	<0.001	--	--	--	--	--	--	--	
"F"	08/27/86	(1)	2.1	--	--	--	0.068	0.005	NR	0.005	--	--	--	--	--	--	--	
"G"	08/27/86	(1)	3.1	--	--	--	0.052	0.003	NR	0.003	--	--	--	--	--	--	--	
"H"	08/27/86	(1)	<0.05	--	--	--	<0.001	<0.001	NR	<0.001	--	--	--	--	--	--	--	
"J"	08/27/86	(1)	<0.05	--	--	--	<0.001	<0.001	NR	<0.001	--	--	--	--	--	--	--	
"K"	08/27/86	(1)	7.4	--	--	--	<0.001	<0.001	NR	<0.001	--	--	--	--	--	--	--	
"L"	08/27/86	(1)	<0.05	--	--	--	<0.001	<0.001	NR	<0.001	--	--	--	--	--	--	--	
#15.5	08/27/86	(1)	<0.05	--	--	--	<0.001	<0.001	NR	<0.001	--	--	--	--	--	--	--	
#16	08/27/86	(1)	8.6	--	--	--	<0.001	0.007	NR	5.1	--	--	--	--	--	--	--	
#17	08/27/86	(1)	<0.05	--	--	--	<0.001	<0.001	NR	<0.001	--	--	--	--	--	--	--	
#18	08/27/86	(1)	<0.05	--	--	--	<0.001	<0.001	NR	<0.001	--	--	--	--	--	--	--	
#21.5	08/27/86	(1)	59	--	--	--	0.009	0.011	NR	0.03	--	--	--	--	--	--	--	
#22	08/27/86	(1)	7.9	--	--	--	<0.001	0.008	NR	0.009	--	--	--	--	--	--	--	
#23	08/27/86	(1)	3.3	--	--	--	<0.001	<0.001	NR	<0.001	--	--	--	--	--	--	--	
#26.5	08/27/86	(1)	<0.05	--	--	--	<0.001	<0.001	NR	<0.001	--	--	--	--	--	--	--	
#27	08/27/86	(1)	0.54	--	--	--	<0.001	0.014	NR	0.058	--	--	--	--	--	--	--	
#30	08/27/86	(1)	10.2	--	--	--	<0.001	<0.001	NR	<0.001	--	--	--	--	--	--	--	
#4	08/27/86	(1)	<0.05	--	--	--	<0.001	<0.003	NR	<0.012	--	--	--	--	--	--	--	
#5	08/27/86	(1)	<0.05	--	--	--	<0.001	<0.001	NR	<0.001	--	--	--	--	--	--	--	
#5.5	08/27/86	(1)	<0.05	--	--	--	<0.001	<0.001	NR	<0.001	--	--	--	--	--	--	--	
#6	08/27/86	(1)	<0.05	--	--	--	<0.001	<0.001	NR	<0.001	--	--	--	--	--	--	--	
#7	08/27/86	(1)	<0.05	--	--	--	<0.001	<0.001	NR	<0.001	--	--	--	--	--	--	--	
MVA	08/27/86	(2)	--	--	--	--	41,000	4,200	NR	22,000	NR	NR	1.1	NR	NR	NR	NR	7.2
W 9	08/27/86	(2)	--	--	--	--	9	NR	NR	NR	NR	NR	1.58	NR	NR	NR	NR	NR
MW-1	05/05/89	(5)	--	24	--	13	16	2.1	0.3	1.2	--	--	--	--	--	--	--	
MW-1	02/06/91	(6)	--	22	--	<0.01	6.8	3.5	0.41	2	--	--	--	--	--	--	--	
MW-1	12/27-28/88	(5)	--	17	--	0.38	8.6	0.94	0.25	0.57	--	--	--	--	--	--	--	
MW-2	05/05/89	(5)	--	0.018	--	0.04	<0.0005	<0.0005	<0.0005	<0.0005	--	--	--	--	--	--	--	
MW-2	02/06/91	(6)	--	<0.01	--	0.83	<0.0003	<0.0003	<0.0003	<0.0006	--	--	--	--	--	--	--	
MW-2	12/27-28/88	(5)	--	0.022	--	0.072	<0.0005	<0.0005	<0.0005	<0.0005	--	--	--	--	--	--	--	
MW-3	05/05/89	(5)	--	1.8	--	0.11	0.064	0.25	0.61	0.11	--	--	--	--	--	--	--	
MW-3	12/27-28/88	(5)	--	4.2	--	4.2	0.077	1.4	0.14	0.56	--	--	--	--	--	--	--	
MW-3P (sludge)	12/28/89	(5)	--	--	--	--	--	--	--	--	--	--	--	--	--	--	--	
MW-4	05/05/89	(5)	--	0.018	--	0.06	0.001	<0.0005	<0.0005	<0.0005	--	--	--	--	--	--	--	
MW-4	02/06/91	(6)	--	<0.01	--	<0.01	<0.0003	<0.0003	<0.0003	<0.0006	--	--	--	--	--	--	--	
MW-4	12/27-28/88	(5)	--	0.1	--	<0.01	0.002	0.001	<0.0005	0.002	--	--	--	--	--	--	--	
MW-5	05/05/89	(5)	--	0.005	--	0.09	0.001	<0.0005	<0.0005	<0.0005	--	--	--	--	--	--	--	

Table 5  
 Summary of Historical Analytical Results for Water Samples - TPH, VOCs, Pesticides  
 Bay Center Apartments - Phase I  
 Emeryville, California

Sampling ID	Date	Source	Total Petroleum Hydrocarbons (mg/L)				Volatile Organic Compounds (mg/L)				Pesticide/PCBs (mg/L)							
			TPH (undifferentiated)	TPH-g	TPH-mo	TPH-d	Benzene	Toluene	Ethylbenzene	Xylenes	DDE	DDD	DDT	A-BHC	B-BHC	G-BHC	D-BHC	PCB
MW-5	02/06/91	(6)	--	<0.01	--	0.58	0.006	<0.0003	<0.0003	<0.0006	--	--	--	--	--	--	--	--
MW-5	12/27-28/88	(5)	--	0.89	--	0.53	<0.001	<0.001	0.001	0.003	--	--	--	--	--	--	--	--
MW-6	05/05/89	(5)	--	0.031	--	0.14	0.001	<0.0005	<0.0005	<0.0005	--	--	--	--	--	--	--	--
MW-6	02/06/91	(6)	--	0.04	--	0.13	0.008	<0.0003	<0.0003	<0.0006	--	--	--	--	--	--	--	--
MW-6	12/27-28/88	(5)	--	0.052	--	<0.01	0.001	<0.0005	<0.0005	<0.0005	--	--	--	--	--	--	--	--
MW-E	05/05/89	(5)	--	5.4	--	0.1	3.2	0.69	0.097	0.33	--	--	--	--	--	--	--	--
B-1	03/16/92	(7)	--	ND	0.57	0.17	ND	ND	ND	ND	--	--	--	--	--	--	--	--
B-2	03/16/92	(7)	--	0.48	0.33	0.25	0.075	ND	0.005	ND	--	--	--	--	--	--	--	--
F	08/30/87	(4)	--	<0.0005	<1	--	<0.0005	<0.0005	<0.0005	<0.0005	--	--	--	--	--	--	--	--
G	08/30/87	(4)	--	<0.0005	<1	--	<0.0005	<0.0005	<0.0005	<0.0005	--	--	--	--	--	--	--	--
H	08/30/87	(4)	--	0.0719	<1	--	0.0109	0.0065	0.0079	0.0303	--	--	--	--	--	--	--	--
I	08/30/87	(4)	--	<0.0005	<1	--	<0.0005	<0.0005	<0.0005	<0.0005	--	--	--	--	--	--	--	--
J	08/30/87	(4)	--	<0.0005	<1	--	<0.0005	<0.0005	<0.0005	<0.0005	--	--	--	--	--	--	--	--
K	08/30/87	(4)	--	<0.0005	<1	--	<0.0005	<0.0005	<0.0005	<0.0005	--	--	--	--	--	--	--	--
L	08/30/87	(4)	--	<0.0005	<1	--	<0.0005	<0.0005	<0.0005	<0.0005	--	--	--	--	--	--	--	--
MW-A	08/20/86	(3)	--	--	--	--	41000	22000	4200		0.29	0.33	0.48	4.4		0.27		7.2
MW-B	08/20/86	(3)	--	--	--	--	ND	ND	ND		0.31	0.51	0.15	4.6	0.12	0.048	0.25	ND
MW-B	12/30/86	(3)	--	--	--	--	ND	ND	ND		--	--	--	--	--	--	--	--
MW-C	12/19/86	(3)	--	--	--	--	0.061	0.085	0.089		--	--	--	--	--	--	--	--
MW-C	Pre 12/86	(3)	--	--	--	--	22000	ND	ND		0.75	0.42	0.41	0.19	ND	ND	ND	ND
MW-D	12/19/86	(3)	--	--	--	--	ND	ND	ND		--	--	--	--	--	--	--	--
MW-E	12/19/86	(3)	--	--	--	--	4.4	6.6	1.7		--	--	--	--	--	--	--	--
RW	09/02/87	(4)	--	93.724	335	--	47.687	10.14	1.534	7.199	--	--	--	--	--	--	--	--
W-15	08/20/86	(2)	--	--	--	--	ND	ND	ND		ND	ND	ND	ND	ND	ND	ND	ND
HMW-1	12/29/89	(7)	--	0.1	<0.01	--	<0.005	<0.005	<0.005	<0.01	--	--	--	--	--	--	--	--
HMW-1	03/24/90	(7)	--	0.085	<0.01	--	<0.0003	<0.0003	<0.0003	0.0003	--	--	--	--	--	--	--	--
HMW-1	04/03/91	(7)	--	<0.03	<5.0	--	<0.0003	<0.0003	<0.0003	<0.0003	--	--	--	--	--	--	--	--
HMW-1	04/01/92	(7)	--	--	--	--	--	--	--	--	--	--	--	--	--	--	--	--
HMW-2	12/29/89	(7)	--	0.1	12	--	<0.005	<0.005	<0.005	<0.01	--	--	--	--	--	--	--	--
HMW-2	03/24/90	(7)	--	0.05	4.2	--	<0.0003	<0.0003	<0.0003	<0.0004	--	--	--	--	--	--	--	--
HMW-2	04/03/91	(7)	--	<0.03	47	--	<0.0003	<0.0003	<0.0003	<0.0003	--	--	--	--	--	--	--	--
HMW-2	04/01/92	(7)	--	<0.03	5	--	<0.0003	<0.0003	<0.0003	<0.0003	--	--	--	--	--	--	--	--
HMW-3	12/29/89	(7)	--	<0.1	2	--	<0.005	<0.005	<0.005	<0.01	--	--	--	--	--	--	--	--
HMW-3	03/24/90	(7)	--	<0.03	4.8	--	<0.0003	<0.0003	<0.0003	<0.0004	--	--	--	--	--	--	--	--
HMW-3	04/03/91	(7)	--	<0.03	5.8	--	<0.0003	<0.0003	<0.0003	<0.0003	--	--	--	--	--	--	--	--
HMW-3	04/01/92	(7)	--	<0.03	<5.0	--	<0.0003	<0.0003	<0.0003	<0.0003	--	--	--	--	--	--	--	--
HMW-4	03/24/90	(7)	--	0.04	4.2	--	0.004	0.002	<0.0003	0.0005	--	--	--	--	--	--	--	--
HMW-4	04/03/91	(7)	--	<0.03	87	--	<0.0003	<0.0003	<0.0003	<0.0003	--	--	--	--	--	--	--	--
HMW-4	04/01/92	(7)	--	<0.03	49	--	<0.0003	<0.0003	<0.0003	<0.0003	--	--	--	--	--	--	--	--
HMW-5	03/24/90	(7)	--	<0.03	<0.1	--	<0.0003	<0.0003	<0.0003	<0.0003	--	--	--	--	--	--	--	--

**Table 5**  
**Summary of Historical Analytical Results for Water Samples - TPH, VOCs, Pesticides**  
**Bay Center Apartments - Phase I**  
**Emeryville, California**

Sampling ID	Date	Source	Total Petroleum Hydrocarbons (mg/L)				Volatile Organic Compounds (mg/L)				Pesticide/PCBs (mg/L)							
			TPH (undifferentiated)	TPH-g	TPH-mo	TPH-d	Benzene	Toluene	Ethylbenzene	Xylenes	DDE	DDD	DDT	A-BHC	B-BHC	G-BHC	D-BHC	PCB
HMW-5	04/03/91	(7)	--	<0.03	10	--	<0.0003	<0.0003	<0.0003	<0.0003	--	--	--	--	--	--	--	--
HMW-5	04/01/92	(7)	--	--	--	--	--	--	--	--	--	--	--	--	--	--	--	--
HMW-6	03/24/90	(7)	--	0.04	12	--	0.004	<0.0003	<0.0003	<0.0003	--	--	--	--	--	--	--	--
HMW-6	04/03/91	(7)	--	<0.03	28	--	<0.0003	<0.0003	<0.0003	<0.0003	--	--	--	--	--	--	--	--
HMW-6	08/08/91	(7)	--	--	--	--	--	--	--	--	--	--	--	--	--	--	--	--
HMW-6	11/21/91	(7)	--	--	--	--	--	--	--	--	--	--	--	--	--	--	--	--
HMW-6	02/12/92	(7)	--	--	--	--	--	--	--	--	--	--	--	--	--	--	--	--
HMW-6	04/01/92	(7)	--	<0.03	13	--	0.0007	<0.0003	<0.0003	0.00037	--	--	--	--	--	--	--	--

**Notes:**

mg/L = Milligrams per liter.

TPH-d = Total petroleum hydrocarbons quantified as diesel.

TPH-mo = Total petroleum hydrocarbons quantified as motor oil.

TPH-g = Total petroleum hydrocarbons quantified as gasoline.

-- = Not applicable.

- (1) Aqua Science Engineers, Inc. A Proposal for Installing a Fuel Contamination Recovery System at The Bay Center Project, Emeryville, CA. August 27, 1986.
- (2) Earth Metrics Inc. Soil and Groundwater Contamination Characterization, Bay Center Project, Emeryville, CA. August 20, 1986.
- (3) Groundwater Technology, Inc. Subsurface Hydrocarbon Investigation for the Bay Center Project, Emeryville, CA. March 17, 1987.
- (4) Groundwater Technology, Inc. Report of Further Subsurface Hydrocarbon Investigation. September 1, 1987.
- (5) Groundwater Technology, Inc. Well Replacement and Groundwater Assessment Report, Emeryville, CA. June, 1989.
- (6) Groundwater Technology, Inc. A Quarterly Status Report for the Bay Center Project, Emeryville, CA. April 15, 1991.
- (7) Harding Lawson Associates. Results of Soil and Groundwater Investigation: 1.5-acre portion of The Bay Center Site, Emeryville, CA. May 6, 1992



Table 6  
 Summary of Historical Analytical Results for Water Samples - Metals & PAHs  
 Bay Center Apartments - Phase I  
 Emeryville, California

Sampling ID	Date	Source	Metals (mg/L)													Base Neutral Acid Compounds (mg/L)																				
			Antimony	Arsenic	Beryllium	Barium	Cadmium	Chromium	Copper	Lead	Mercury	Nickel	Selenium	Silver	Thallium	Zinc	Benzo-A - Anthracene	Benzi-Butyl - Phthalate	Bi-3, 2-Ethyl- Hexyl-Phthalate	Floranthene	Florene	Naphthalene	Phenanthrene	Pyrene	Benzo(a) Pyrene	Benzo-B- Fluoranthene	Benzo-K- Fluoranthene	Chrysene	Indeno-1,2,3- CD-Pyrene	Benzo(ghi) Perylene	2-Chloro naphthalene	Phenol				
MW-6	05/05/89	(5)	--	0.015	--	--	--	0.08	0.02	--	0.04	--	--	0.14	--	--	--	--	--	--	--	--	--	--	--	--	--	--	--	--	--	--	--	--	--	--
MW-6	02/06/91	(6)	<0.5	0.016	<0.02	--	<0.02	<0.02	<0.04	<0.011	<0.0002	<0.07	<0.01	<0.5	<0.2	<0.04	--	--	--	--	--	--	--	--	--	--	--	--	--	--	--	--	--	--	--	--
MW-6	12/27-28/88	(5)	--	--	--	--	--	--	--	--	--	--	--	--	--	--	--	--	--	--	--	--	--	--	--	--	--	--	--	--	--	--	--	--	--	--
MW-E	05/05/89	(5)	--	--	--	--	--	--	--	--	--	--	--	--	--	--	--	--	--	--	--	--	--	--	--	--	--	--	--	--	--	--	--	--	--	--
B-1	03/16/92	(7)	--	--	--	0.3	0.011	0.011	--	0.0089	--	--	ND	0.039	--	--	--	--	--	--	--	--	--	--	--	--	--	--	--	--	--	--	--	--	--	--
B-2	03/16/92	(7)	--	--	--	0.14	0.012	0.088	--	0.03	--	--	0.017	0.042	--	--	--	--	--	--	--	--	--	--	--	--	--	--	--	--	--	--	--	--	--	--
F	08/30/87	(4)	--	<0.001	--	--	--	--	--	<0.00002	--	--	--	--	--	--	--	--	--	--	--	--	--	--	--	--	--	--	--	--	--	--	--	--	--	--
G	08/30/87	(4)	--	<0.001	--	--	--	--	--	0.000181	--	--	--	--	--	--	--	--	--	--	--	--	--	--	--	--	--	--	--	--	--	--	--	--	--	--
H	08/30/87	(4)	--	<0.001	--	--	--	--	--	<0.00002	--	--	--	--	--	--	--	--	--	--	--	--	--	--	--	--	--	--	--	--	--	--	--	--	--	--
I	08/30/87	(4)	--	<0.001	--	--	--	--	--	<0.00002	--	--	--	--	--	--	--	--	--	--	--	--	--	--	--	--	--	--	--	--	--	--	--	--	--	--
J	08/30/87	(4)	--	<0.001	--	--	--	--	--	<0.00002	--	--	--	--	--	--	--	--	--	--	--	--	--	--	--	--	--	--	--	--	--	--	--	--	--	--
K	08/30/87	(4)	--	<0.001	--	--	--	--	--	0.00545	--	--	--	--	--	--	--	--	--	--	--	--	--	--	--	--	--	--	--	--	--	--	--	--	--	--
L	08/30/87	(4)	--	0.001	--	--	--	--	--	0.0069	--	--	--	--	--	--	--	--	--	--	--	--	--	--	--	--	--	--	--	--	--	--	--	--	--	--
MW-A	08/20/86	(3)	--	--	--	--	--	--	--	--	--	--	--	--	--	--	63	80	ND	6	33	1100	83	8	ND	ND	ND	ND	ND	ND	NR	NR	NR	NR	NR	
MW-B	08/20/86	(3)	--	--	--	--	--	--	--	--	--	--	--	--	--	--	ND	ND	ND	ND	ND	ND	13	ND	ND	ND	ND	ND	ND	NR	NR	NR	NR	NR	NR	
MW-B	12/30/86	(3)	--	--	--	--	--	--	--	--	--	--	--	--	--	--	ND	NR	NR	NR	NR	ND	NR	ND	NR	NR	NR	NR	NR	NR	NR	NR	NR	NR	NR	
MW-C	12/19/86	(3)	--	--	--	--	--	--	--	--	--	--	--	--	--	--	0.022	NR	NR	NR	NR	0.022	NR	ND	NR	NR	NR	NR	NR	NR	NR	NR	0.012	ND	ND	
MW-C	Pre 12/86	(3)	--	--	--	--	--	--	--	--	--	--	--	--	--	--	10	ND	34	ND	ND	12	22	28	15	10	10	14	15	NR	NR	NR	NR	NR		
MW-D	12/19/86	(3)	--	--	--	--	--	--	--	--	--	--	--	--	--	--	ND	NR	NR	NR	NR	ND	NR	ND	NR	NR	NR	NR	NR	NR	NR	NR	ND	0.017	ND	
MW-E	12/19/86	(3)	--	--	--	--	--	--	--	--	--	--	--	--	--	--	0.15	NR	NR	NR	NR	0.15	NR	0.0013	NR	NR	NR	NR	NR	NR	NR	NR	NR	NR	NR	
RW	09/02/87	(4)	--	<0.001	--	--	--	--	<0.00005	--	--	--	--	--	--	--	--	--	--	--	--	--	--	--	--	--	--	--	--	--	--	--	--	--	--	
W-15	08/20/86	(2)	--	--	--	--	--	--	--	--	--	--	--	--	--	--	ND	ND	ND	ND	ND	ND	ND	ND	ND	ND	ND	ND	NR	NR	NR	NR	NR	NR	NR	
HMW-1	12/29/89	(7)	--	--	--	--	--	--	<0.01	--	--	--	--	0.028	--	--	--	--	--	--	--	--	--	--	--	--	--	--	--	--	--	--	--	--	--	--
HMW-1	03/24/90	(7)	--	--	--	--	--	--	<0.005	--	--	--	--	0.069	--	--	--	--	--	--	--	--	--	--	--	--	--	--	--	--	--	--	--	--	--	--
HMW-1	04/03/91	(7)	--	--	--	--	--	--	<0.005	--	--	--	--	<0.01	--	--	--	--	--	--	--	--	--	--	--	--	--	--	--	--	--	--	--	--	--	--
HMW-1	04/01/92	(7)	--	--	--	--	--	--	--	--	--	--	--	--	--	--	--	--	--	--	--	--	--	--	--	--	--	--	--	--	--	--	--	--	--	--
HMW-2	12/29/89	(7)	--	--	--	--	--	--	<0.1	--	--	--	--	0.015	--	--	--	--	--	--	--	--	--	--	--	--	--	--	--	--	--	--	--	--	--	--
HMW-2	03/24/90	(7)	--	--	--	--	--	--	<0.005	--	--	--	--	0.1	--	--	--	--	--	--	--	--	--	--	--	--	--	--	--	--	--	--	--	--	--	--
HMW-2	04/03/91	(7)	--	--	--	--	--	--	0.007	--	--	--	--	<0.01	--	--	--	--	--	--	--	--	--	--	--	--	--	--	--	--	--	--	--	--	--	--
HMW-2	04/01/92	(7)	--	--	--	--	--	--	0.026	--	--	--	--	0.13	--	--	--	--	--	--	--	--	--	--	--	--	--	--	--	--	--	--	--	--	--	--
HMW-3	12/29/89	(7)	--	--	--	--	--	--	<0.01	--	--	--	--	0.078	--	--	--	--	--	--	--	--	--	--	--	--	--	--	--	--	--	--	--	--	--	--
HMW-3	03/24/90	(7)	--	--	--	--	--	--	<0.005	--	--	--	--	0.25	--	--	--	--	--	--	--	--	--	--	--	--	--	--	--	--	--	--	--	--	--	--
HMW-3	04/03/91	(7)	--	--	--	--	--	--	<0.005	--	--	--	--	<0.01	--	--	--	--	--	--	--	--	--	--	--	--	--	--	--	--	--	--	--	--	--	--
HMW-3	04/01/92	(7)	--	--	--	--	--	--	<0.005	--	--	--	--	0.16	--	--	--	--	--	--	--	--	--	--	--	--	--	--	--	--	--	--	--	--	--	--
HMW-4	03/24/90	(7)	--	--	--	--	--	--	<0.005	--	--	--	--	0.16	--	--	--	--	--	--	--	--	--	--	--	--	--	--	--	--	--	--	--	--	--	--
HMW-4	04/03/91	(7)	--	--	--	--	--	--	<0.005	--	--	--	--	<0.01	--	--	--	--	--	--	--	--	--	--	--	--	--	--	--	--	--	--	--	--	--	--
HMW-4	04/01/92	(7)	--	--	--	--	--	--	<0.005	--	--	--	--	0.09	--	--	--	--	--	--	--	--	--	--	--	--	--	--	--	--	--	--	--	--	--	--
HMW-5	03/24/90	(7)	--	--	--	--	--	--	0.005	--	--	--	--	0.068	--	--	--	--	--	--	--	--	--	--	--	--	--	--	--	--	--	--	--	--	--	--
HMW-5	04/03/91	(7)	--	--	--	--	--	--	<0.005	--	--	--	--	<0.01	--	--	--	--	--	--	--	--	--	--	--	--	--	--	--	--	--	--	--	--	--	--
HMW-5	04/01/92	(7)	--	--	--	--	--	--	--	--	--	--	--	--	--	--	--	--	--	--	--	--	--	--	--	--	--	--	--	--	--	--	--	--	--	--
HMW-6	03/24/90	(7)	--	--	--	--	--	--	0.006	--	--	--	--	0.15	--	--	--	--	--	--	--	--	--	--	--	--	--	--	--	--	--	--	--	--	--	--
HMW-6	04/03/91	(7)	--	--	--	--	--	--	0.11	--	--	--	--	0.36	--	--	--	--	--	--	--	--	--	--	--	--	--	--	--	--	--	--	--	--	--	--



Table 6  
 Summary of Historical Analytical Results for Water Samples - Metals & PAHs  
 Bay Center Apartments - Phase I  
 Emeryville, California

Sampling ID	Date	Source	Metals (mg/L)													Base Neutral Acid Compounds (mg/L)																			
			Antimony	Arsenic	Beryllium	Barium	Cadmium	Chromium	Copper	Lead	Mercury	Nickel	Selenium	Silver	Thallium	Zinc	Benzo-A - Anthracene	Benzi-Butyl - Phthalate	BI-3, 2-Ethyl- Hexyl-Phthalate	Floranthene	Florene	Naphthalene	Phenanthrene	Pyrene	Benzo(a) Pyrene	Benzo-B- Fluoranthene	Benzo-K- Fluoranthene	Chrysene	Indeno-1,2,3- CD-Pyrene	Benzo(ghi) Perylene	2-Chloro naphthalene	Phenol			
HMW-6	08/08/91	(7)	--	--	--	--	--	--	0.065	--	--	--	--	--	--	--	--	--	--	--	--	--	--	--	--	--	--	--	--	--	--	--	--	--	--
HMW-6	11/21/91	(7)	--	--	--	--	--	--	0.075	--	--	--	--	--	--	--	--	--	--	--	--	--	--	--	--	--	--	--	--	--	--	--	--	--	--
HMW-6	02/12/92	(7)	--	--	--	--	--	--	0.02	--	--	--	--	--	--	--	--	--	--	--	--	--	--	--	--	--	--	--	--	--	--	--	--	--	--
HMW-6	04/01/92	(7)	--	--	--	--	--	--	0.016	--	--	--	--	--	0.11	--	--	--	--	--	--	--	--	--	--	--	--	--	--	--	--	--	--	--	--

mg/L = Milligrams per liter.  
 -- = Not applicable.

- (1) Aqua Science Engineers, Inc. A Proposal for Installing a Fuel Contamination Recovery System at The Bay Center Project, Emeryville, CA. August 27, 1986.
- (2) Earth Metrics Inc. Soil and Groundwater Contamination Characterization, Bay Center Project, Emeryville, CA. August 20, 1986.
- (3) Groundwater Technology, Inc. Subsurface Hydrocarbon Investigation for the Bay Center Project, Emeryville, CA. March 17, 1987.
- (4) Groundwater Technology, Inc. Report of Further Subsurface Hydrocarbon Investigation. September 1, 1987.
- (5) Groundwater Technology, Inc. Well Replacement and Groundwater Assessment Report, Emeryville, CA. June, 1989.
- (6) Groundwater Technology, Inc. A Quarterly Status Report for the Bay Center Project, Emeryville, CA. April 15, 1991.
- (7) Harding Lawson Associates. Results of Soil and Groundwater Investigation: 1.5-acre portion of The Bay Center Site, Emeryville, CA. May 6, 1992.

**Table 7**  
**Summary of Historical Analytical Results for Soil Samples - TPH & VOCs**  
**Bay Center Apartments - Phase I**  
**Emeryville, California**

Sampling ID (depth)	Date	Source	Total Petroleum Hydrocarbons (mg/kg)			Volatile Organic Compounds (mg/kg)			
			TPH-g	TPH-mo	TPH-d	Benzene	Toluene	Ethylbenzene	Xylenes
B-1 (5.0')	03/16/92	(7)	ND	290	95	ND	ND	ND	ND
B-1 (20.0')	03/16/92	(7)	ND	1.5	ND	ND	ND	ND	ND
B-2 (17.5')	03/16/92	(7)	ND	350	140	ND	ND	ND	ND
B-2 (25.0')	03/16/92	(7)	ND	2.6	ND	ND	ND	ND	ND
K-11 (10-15')	09/30/92	(8)	22	180	ND	0.045	0.027	0.36	0.41
K8-13(10-15')	09/30/92	(8)	150	290	ND	0.74	1.9	2.2	4.6
HMW-1 (5.5')	12/01/89	(7)	1	80	<10	ND	0.42	ND	ND
HMW-2 (5.5')	12/01/89	(7)	1	280	<80	ND	0.36	ND	ND
HMW-3 (5.5')	12/01/89	(7)	0.4	640	<10	ND	0.05	ND	ND
HMW-3 (10.5')	12/01/89	(7)	<300	3600	320	ND	0.51	ND	ND

**Notes:**

ND = Not detected; detection limit not specified in report

TPH-d = Total petroleum hydrocarbons quantified as diesel.

TPH-mo = Total petroleum hydrocarbons quantified as motor oil.

TPH-g = Total petroleum hydrocarbons quantified as gasoline.

(7) Harding Lawson Associates. Results of Soil and Groundwater Investigation: 1.5-acre portion of The Bay Center Site, Emeryville, CA. May 6, 1992

(8) Harding Lawson Associates. Results of Services During Construction, EmeryBay Apartments - Phase II, Emeryville, CA. May 19, 1994.

**Table 8**  
**Summary of Historical Analytical Results for Soil Samples - Metals & PAHs**  
**Bay Center Apartments - Phase I**  
**Emeryville, California**

Sampling ID (depth)	Date	Source	Metals (mg/kg)													Base Neutral Acid Compounds (mg/kg)																							
			Arsenic	Beryllium	Barium	Cadmium	Chromium	Cobalt	Copper	Lead	Mercury	Nickel	Selenium	Silver	Vanadium	Zinc	Anthracene	Acenaphthene	Acenaphthylene	Benzo-A - Anthracene	Benzi-Butyl - Phthalate	BI-3, 2-Ethyl-Hexyl Phthalate	Dibenzofuran	Dibenzo(ah) anthracene	Floranthene	Florene	Naphthalene	Phenanthrene	Pyrene	Benzo(a) Pyrene	Benzo-B-Fluoranthene	Benzo-K-Fluoranthene	Chrysene	Indeno-1,2,3-CD-Pyrene	Benzo(ghi) Perylene				
B-1 (5.0')	03/16/92	(7)	ND	0.68	140	0.92	21	11	27	52	0.079	49	0.31	0.78	28	140	-	-	-	-	-	-	-	-	-	-	-	-	-	-	-	-	-	-	-	-	-		
B-1 (20.0')	03/16/92	(7)	ND	0.35	44	0.62	15	7.2	11	4	0.015	34	0.69	0.45	12	33	-	-	-	-	-	-	-	-	-	-	-	-	-	-	-	-	-	-	-	-	-		
B-2 (17.5')	03/16/92	(7)	4.1	0.52	98	1.6	38	12	50	76	0.47	34	0.84	1.4	27	240	-	-	-	-	-	-	-	-	-	-	-	-	-	-	-	-	-	-	-	-	-	-	
B-2 (25.0')	03/16/92	(7)	ND	0.48	81	0.74	17	9.8	12	4.6	0.024	37	0.77	0.48	17	31	-	-	-	-	-	-	-	-	-	-	-	-	-	-	-	-	-	-	-	-	-	-	
K-11 (10-15')	09/30/92	(8)	-	-	-	-	-	-	-	-	-	-	-	-	-	-	-	-	-	-	-	-	-	-	-	-	-	-	-	-	-	-	-	-	-	-	-	-	
K8-13(10-15')	09/30/92	(8)	-	-	-	-	-	-	-	-	-	-	-	-	-	-	-	-	-	-	-	-	-	-	-	-	-	-	-	-	-	-	-	-	-	-	-	-	-
HMW-1 (5.5')	12/01/89	(7)	-	-	-	-	-	-	-	-	-	-	-	-	-	-	ND	ND	ND	ND	ND	ND	ND	ND	ND	0.56	ND	0.55	0.59	ND	ND	ND	ND	ND	ND	ND	ND	ND	ND
HMW-2 (5.5')	12/01/89	(7)	-	-	-	-	-	-	-	-	-	-	-	-	-	-	3.1	0.44	1.6	2.9	-	-	0.97	0.4	5.9	2.5	-	9.9	6.4	1	1.6	1.9	2.8	1	1	1	1		
HMW-3 (5.5')	12/01/89	(7)	-	-	-	-	-	-	-	-	-	-	-	-	-	-	ND	ND	ND	ND	ND	ND	ND	ND	ND	ND	ND	3.3	ND	ND	ND	ND	ND	ND	ND	ND	ND	ND	ND
HMW-3 (10.5')	12/01/89	(7)	-	-	-	-	-	-	-	-	-	-	-	-	-	-	ND	ND	ND	0.41	ND	ND	ND	ND	ND	1.3	ND	ND	0.96	1.2	ND	ND	ND	0.54	0.5	ND	ND	ND	ND

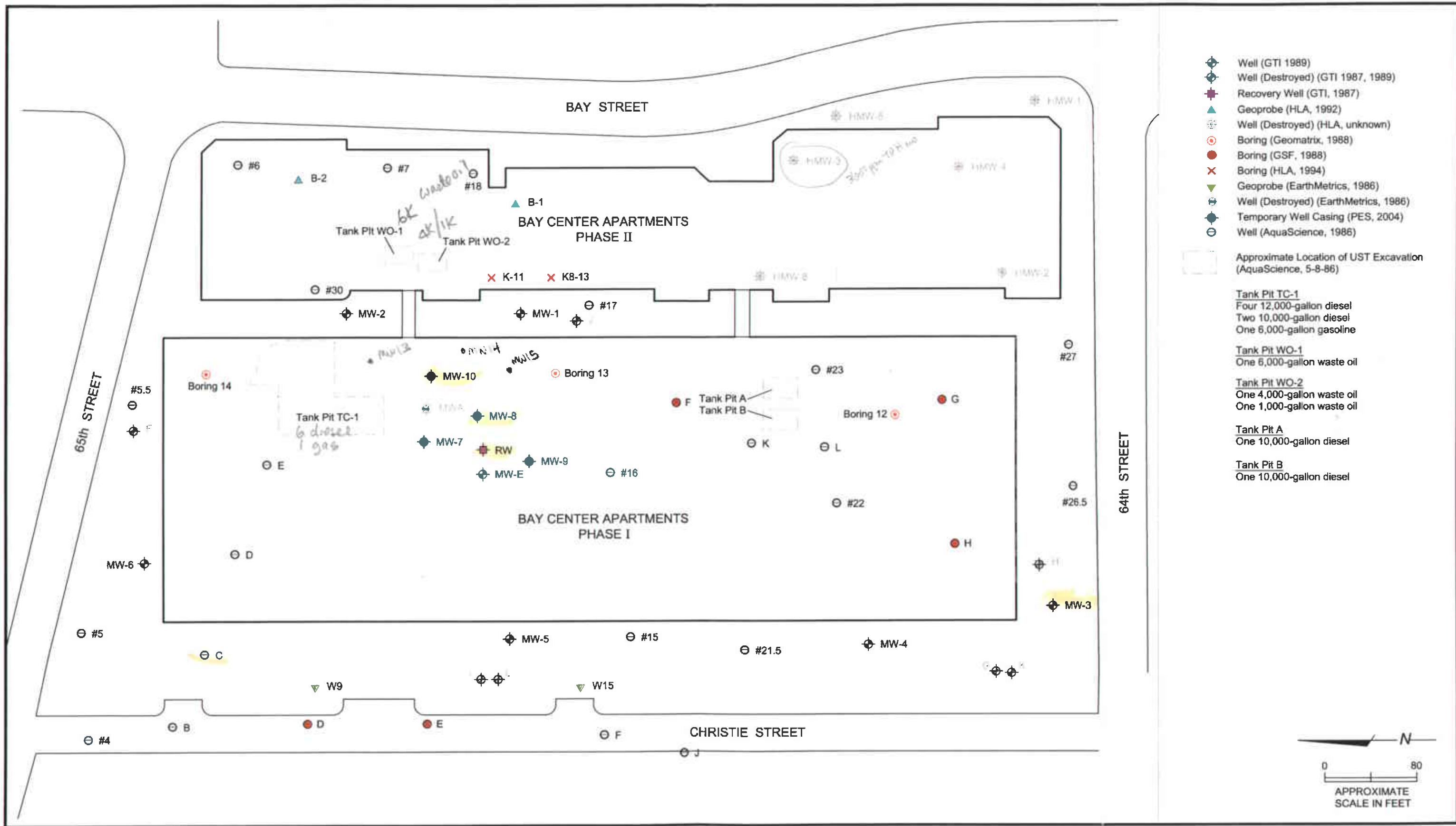
**Notes:**

ND = Not detected; detection limit not specified in report

-- = Not analyzed

(7) Harding Lawson Associates. Results of Soil and Groundwater Investigation: 1.5-acre portion of The Bay Center Site, Emeryville,

(8) Harding Lawson Associates. Results of Services During Construction, EmeryBay Apartments - Phase II, Emeryville, CA. May



**APPENDIX A**

**LOGS OF MONITORING WELLS**

MAJOR DIVISIONS					TYPICAL NAMES
COARSE-GRAINED SOILS MORE THAN HALF IS COARSER THAN NO. 200 SIEVE	GRAVELS MORE THAN HALF COARSE FRACTION IS LARGER THAN NO. 4 SIEVE	CLEAN GRAVELS WITH LESS THAN 15% FINES	GW		WELL-GRADED GRAVELS WITH OR WITHOUT SAND
			GP		POORLY-GRADED GRAVELS WITH OR WITHOUT SAND
		GRAVELS WITH 15% OR MORE FINES	GM		SILTY GRAVELS WITH OR WITHOUT SAND
			GC		CLAYEY GRAVELS WITH OR WITHOUT SAND
	SANDS MORE THAN HALF COARSE FRACTION IS FINER THAN NO. 4 SIEVE SIZE	CLEAN SANDS WITH LESS THAN 15% FINES	SW		WELL-GRADED SANDS WITH OR WITHOUT GRAVEL
			SP		POORLY-GRADED SANDS WITH OR WITHOUT GRAVEL
		SANDS WITH 15% OR MORE FINES	SM		SILTY SANDS WITH OR WITHOUT GRAVEL
			SC		CLAYEY SANDS WITH OR WITHOUT GRAVEL
FINE-GRAINED SOILS MORE THAN HALF IS FINER THAN NO. 200 SIEVE	SILTS AND CLAYS LIQUID LIMIT 50% OR LESS		ML		INORGANIC SILTS OF LOW TO MEDIUM PLASTICITY WITH OR WITHOUT SAND OR GRAVEL
			CL		INORGANIC CLAYS OF LOW TO MEDIUM PLASTICITY WITH OR WITHOUT SAND OR GRAVEL
			OL		ORGANIC SILTS OR CLAYS OF LOW TO MEDIUM PLASTICITY WITH OR WITHOUT SAND OR GRAVEL
	SILTS AND CLAYS LIQUID LIMIT GREATER THAN 50%		MH		INORGANIC SILTS OF HIGH PLASTICITY WITH OR WITHOUT SAND OR GRAVEL
			CH		INORGANIC CLAYS OF HIGH PLASTICITY WITH OR WITHOUT SAND OR GRAVEL
			OH		ORGANIC SILTS OR CLAYS OF HIGH PLASTICITY WITH OR WITHOUT SAND OR GRAVEL
HIGHLY ORGANIC SOILS		PT		PEAT AND OTHER HIGHLY ORGANIC SOILS	

**ABBREVIATION KEY**

- PID (PPM) - Photo Ionization Detector readings in parts per million from field headspace sample screening.
- BLOWS/6" - Blows required to drive sampler 6 inches as indicated on the logs using sample drive hammer weight of 140 pounds falling 30 inches.
- 2.5YR 6/2 - Soil Color according to Munsell Soil Color Charts (1994 Revised Edition)
- feet MSL - feet above Mean Seal Level
- feet BGS - feet below ground surface

**SYMBOLS KEY**

- No Soil Sample Recovered
- Partial Soil Sample Recovered
- Undisturbed Soil Sample Recovered
- Soil Sample Submitted for Laboratory Analysis
- Hydropunch Sample
- First Encountered Groundwater Level
- Piezometric Groundwater level

USCS CHART BAYCENTER.GPJ PES\_ENV.GDT 4/6/04

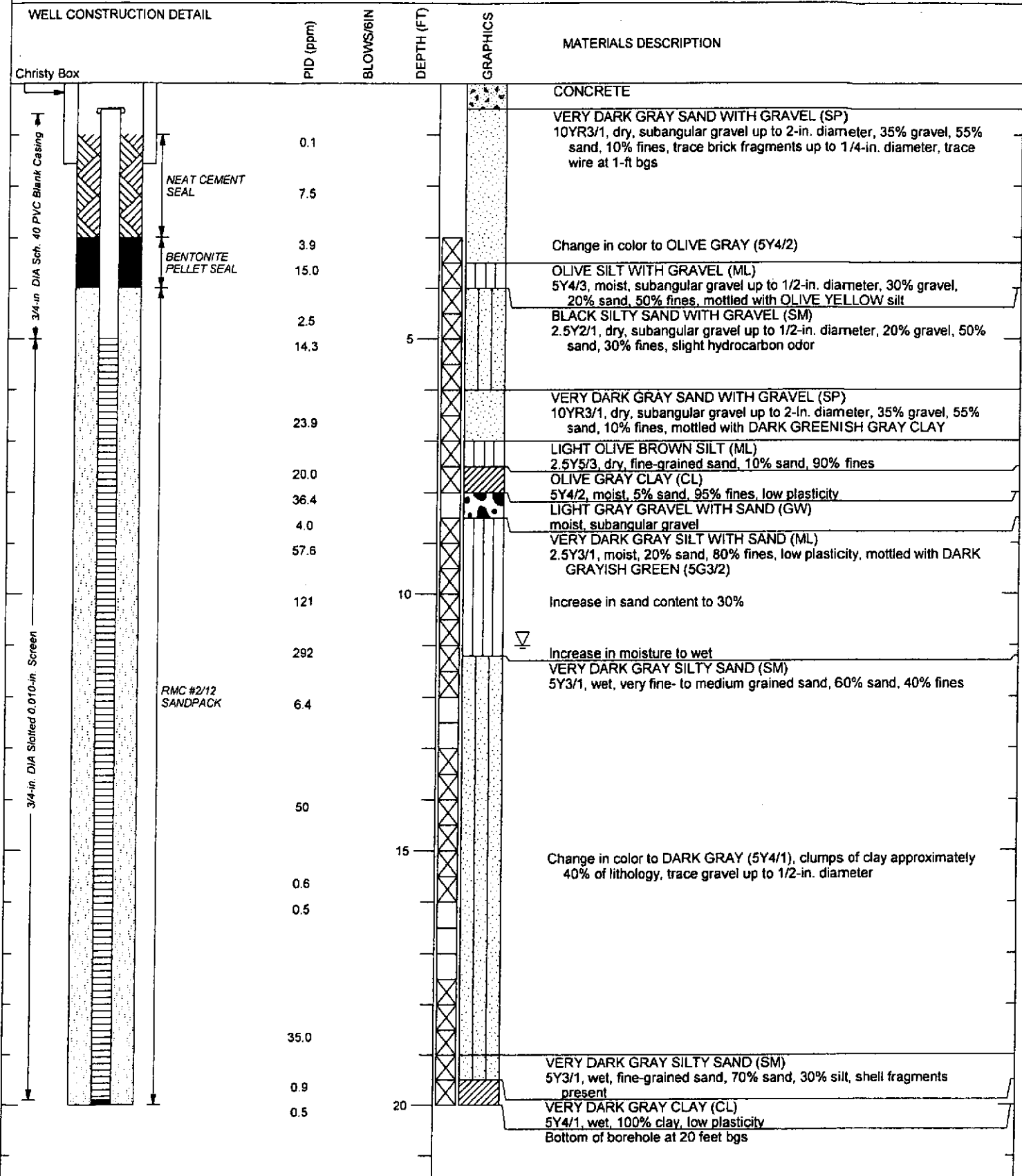


**PES Environmental, Inc.**  
Engineering & Environmental Services

**Unified Soil Classification System Chart**  
Bay Center Apartments  
64th and Christie, Emeryville, CA

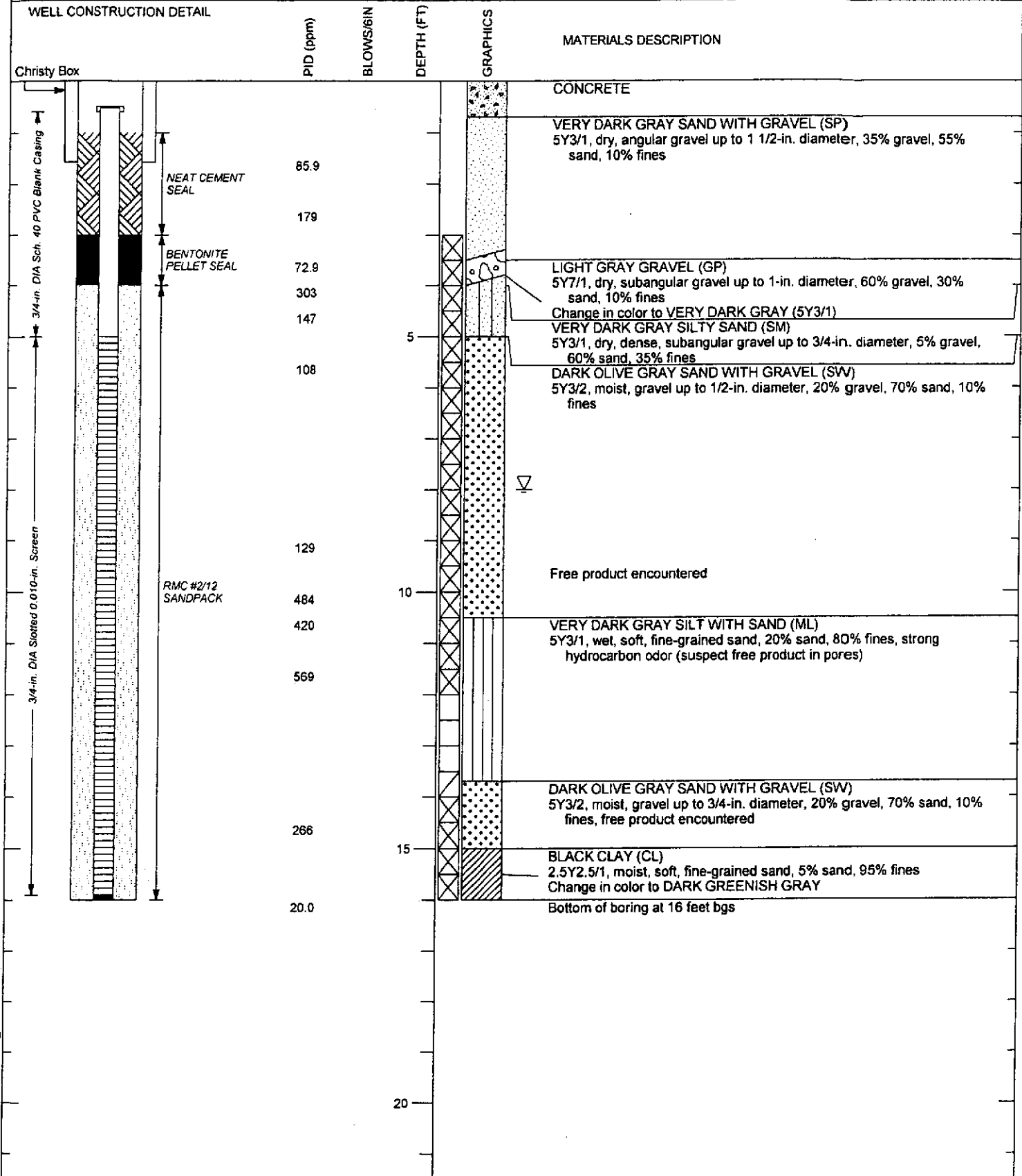
PLATE

**A-0**



LOG OF BORING/WELL BAYCENTER.GPJ PES\_ENV/GDT 3/31/04

PROJECT	Bay Center Apartments	DIAMETER OF HOLE	2.5 in.	PLATE
LOCATION	64th and Christie, Emeryville, CA	TOTAL DEPTH OF HOLE	20 ft.	
JOB NUMBER	241.055.01.002	DATE STARTED	3/1/04	<b>A-1</b>
GEOLOGIST/ENGINEER	Ann Loomis	DATE COMPLETED	3/1/04	
DRILL RIG	Geoprobe 5400			



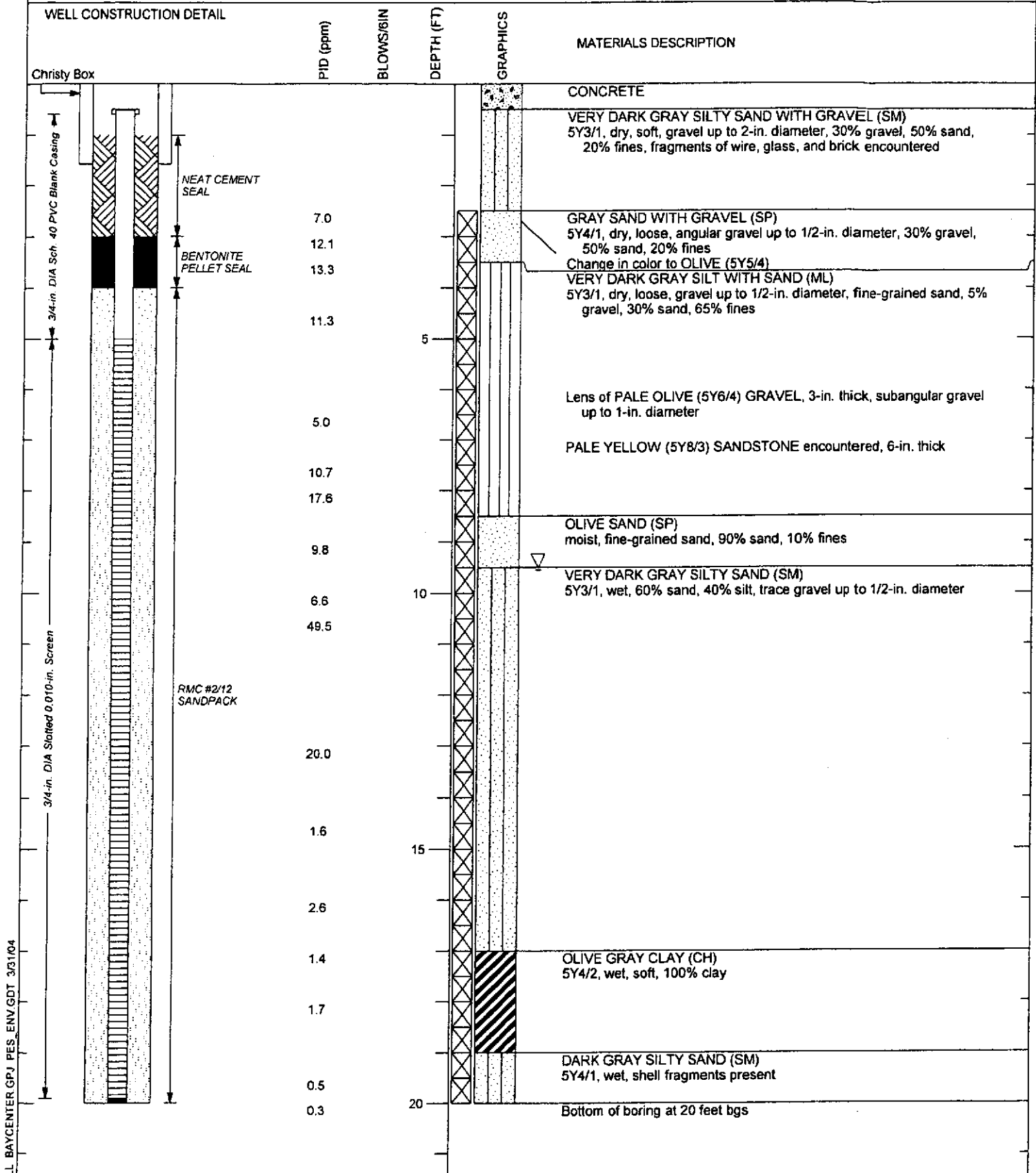
LOG OF BORING/WELL BAYCENTER.GPJ PES\_ENV.GDT 3/3/04

PROJECT Bay Center Apartments  
 LOCATION 64th and Christie, Emeryville, CA  
 JOB NUMBER 241.055.01.002  
 GEOLOGIST/ENGINEER Ann Loomis  
 DRILL RIG Geoprobe 5400

DIAMETER OF HOLE 2.5 in.  
 TOTAL DEPTH OF HOLE 16 ft.  
 DATE STARTED 3/1/04  
 DATE COMPLETED 3/1/04

PLATE  
**A-2**





LOG OF BORING/WELL BAYCENTER GP.J PES\_ENV/GDT 3/31/04

PROJECT: Bay Center Apartments  
 LOCATION: 64th and Christie, Emeryville, CA  
 JOB NUMBER: 241.055.01.002  
 GEOLOGIST/ENGINEER: Ann Loomis  
 DRILL RIG: Geoprobe 5400

DIAMETER OF HOLE: 2.5 in.  
 TOTAL DEPTH OF HOLE: 20 ft.  
 DATE STARTED: 3/1/04  
 DATE COMPLETED: 3/1/04

PLATE  
**A-3**



WELL CONSTRUCTION DETAIL		PID (ppm)	BLOWS/6IN	DEPTH (FT)	GRAPHICS	MATERIALS DESCRIPTION
Christy Box						CONCRETE
NEAT CEMENT SEAL		190				VERY DARK GRAY SILTY SAND (SM) 5Y3/1, dry, hard, medium-grained sand, 10% gravel, 60% sand, 30% fines, fragments of brick, tile, and metal encountered
BENTONITE PELLET SEAL		376				
3/4-in. DIA. Sct. 40 PVC Blank Casing		179				CONCRETE
3/4-in. DIA Slotted 0.010-in. Screen		9.9		5		DARK OLIVE GRAY SILTY SAND (SM) 5Y3/2, moist, medium dense, fine-grained sand, 80% sand, 20% fines, slight hydrocarbon odor
RMC #2/12 SANDPACK		56.3				
		183				VERY DARK GRAY SILT (ML) 5Y3/1, 10% gravel, 10% sand, 80% fines, mottled with DARK GRAYISH GREEN AND BRICK
		249		10		Concrete fill encountered (2-in. thick) Change in color to BLACK (5Y2.5/1), increase in gravel content to 30%, angular gravel up to 1-in. diameter, change in moisture to moist, strong hydrocarbon odor
		659				Free product observed on walls of sample core
		275				OLIVE GRAY SILT WITH SAND (ML) 5Y4/2, wet, soft, fine-grained sand, 30% sand, 70% fines, strong hydrocarbon odor, free product observed
		222				
		650		15		DARK OLIVE GRAY SILTY SAND WITH GRAVEL (SM) 5Y3/2, wet, 30% gravel, 50% sand, 20% fines, strong hydrocarbon odor, free product observed
		140				
		178				
		375				BLACK SILT (ML) 5Y2.5/1, wet, free product observed on wall of sample core
		658				
		24.5				DARK GRAY SILTY SAND (SM) 2.5Y4/1, wet, medium stiff, fine-grained sand, 60% sand, 40% fines, mild hydrocarbon odor, shell fragments present
		5.8				DARK GRAY SILT WITH SAND (ML) 2.5Y4/1, wet, stiff, fine-grained sand, 20% sand, 80% fines
		6.2		20		Change in color to OLIVE BROWN (2.5Y4/4) Bottom of boring at 20 feet bgs

LOG OF BORINGWELL BAYCENTER.GPJ PES\_ENV.GDT 3/31/04

PROJECT Bay Center Apartments  
 LOCATION 64th and Christie, Emeryville, CA  
 JOB NUMBER 241.055.01.002  
 GEOLOGIST/ENGINEER Ann Loomis  
 DRILL RIG Geoprobe 5400

DIAMETER OF HOLE 2.5 in.  
 TOTAL DEPTH OF HOLE 20 ft.  
 DATE STARTED 3/5/04  
 DATE COMPLETED 3/5/04

PLATE  
**A-4**