

6000S Mtg.
(City of Fremont Offices)

13 Nov 89

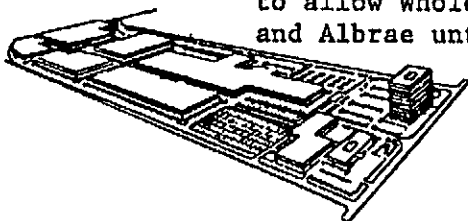
<u>Name</u>	<u>Affiliation</u>	<u>Phone</u>
Jill Duerig	ACWD	659-1970
Charlie Caulfield	City of Fremont	791-4274
Linda Vrabel	City of Fremont	791-4279
Paulette Garcia	City of Fremont	745-2730
Lester Feldman	RWQCB #2	464-1332
Rich Hiatt	RWQCB #2	464-4359
Thomas Peacock	AICO Hay Rat	271-4320
Elizabeth Stone	City of Fremont	791-4279
Joyt Harbin	City of Fremont	790-6717
Ken Banda	COA	790-6721
Dale Sobiech	6000S Corp	657-7633
Carol A. Wolf	D Sebek	2881881

November 13, 1989

MEETING WITH CITY OF FREMONT

RE: CLOSURE PLAN - 6000 STEVENSON BLVD.

- I. City of Fremont Contract Administrator (City/WRT)
- II. Intent of City of Fremont - RE: Closure Plan
- III. Intent of 6000 S Corporation - RE: Closure Plan
- IV. Review: Ensco Report
WRT Report
Other
- V. Outline of Closure Plan
- VI. Schedule of Closure Plan Completion
- VII. Generation of Closure Plan
 - Date to be submitted to City of Fremont
 - Number of copies
 - Review period
 - Acceptance or modification
 - Final acceptance
 - Who is to submit plan
- VIII. City of Fremont Administrative Authority For Review, Acceptance and Implementation of Closure Plan
- IX. 6000 S Corporation to Implement The Following Immediately:
 - Test water and seal wells and coordinate with ACWD
 - Move out all drums & solidified tank
 - Test transformers
 - Provide preliminary title report
- X. City of Fremont Will Implement The Following Immediately:
 - Get closure plan from WRT/Ensco
 - Accept the foundry sand as a NON-hazardous material and remove from the closure plan
 - If WRT/Ensco does not complete the Closure Plan, D. Sobek will contract to have Levine-Fricke provide and their costs will be paid from monies due WRT under their contract with the City of Fremont
 - The City of Fremont will issue a temporary permit to 6000 S Corporation to allow Wholesale/Retail Auto Sales on 2 acres of land at Stevenson and Albrae until the Closure Plan is completed



6000 S CORPORATION

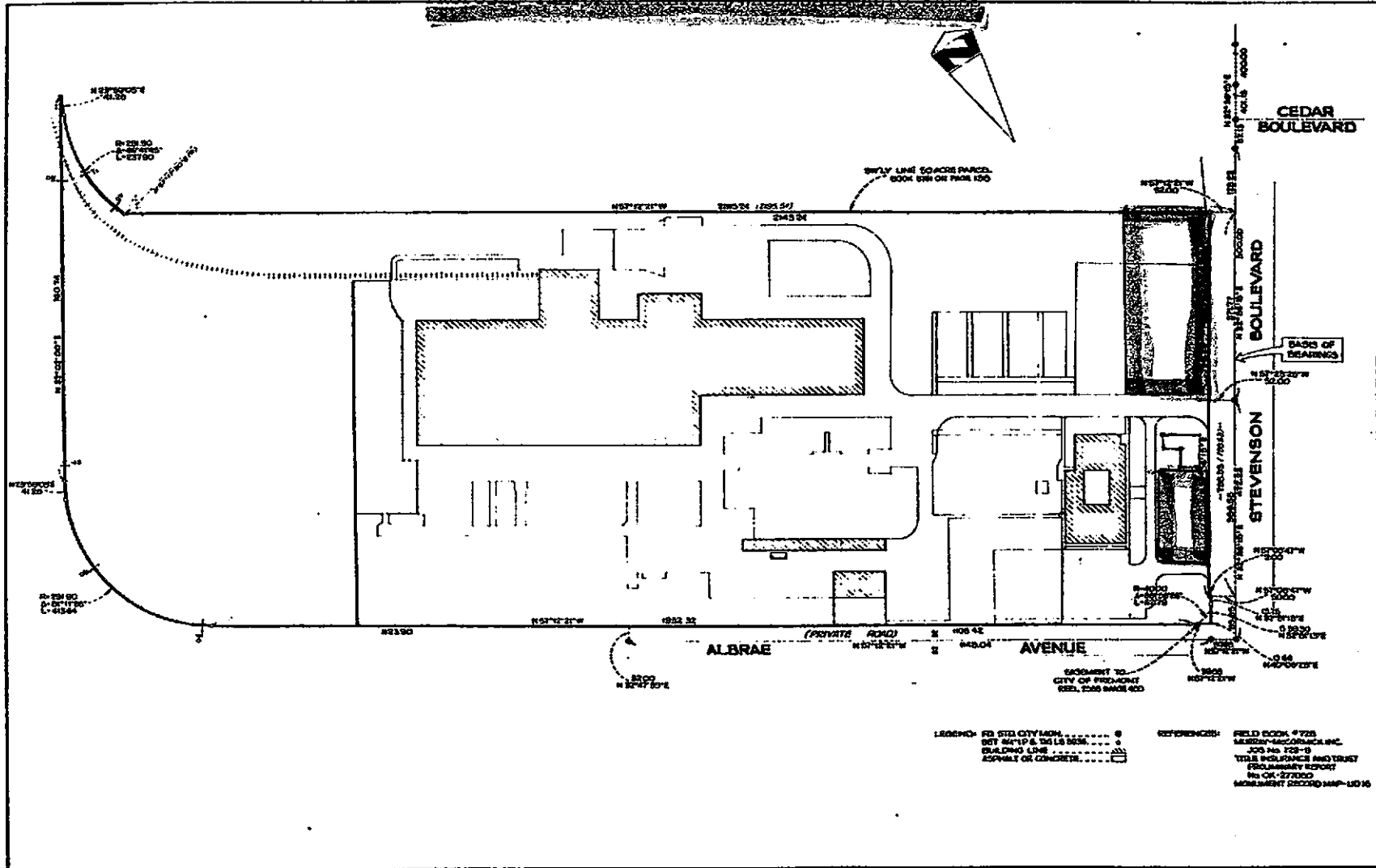
6000 STEVENSON BOULEVARD

FREMONT, CALIFORNIA 94538

(415) 657-7633

- Provide a letter from the City of Fremont Contract Administrator of this project to verify the Closure Plan acceptance, procedures for closure and owner cost estimated to close the site. The property owner needs to satisfy requirements he has for refinancing of the property, and a sale of a portion of the owner's property to the SAWMILL CO., under a lease/purchase option dating back to 1984.

PROPOSED TEMPORARY RETAIL/WHOLESALE AUTO SALES



LEGEND: TO STD CITY MAP 0
 BY MAP & THIS SURV. 0
 BUILDING LINE 0
 EQUAL OR CONCRETE 0

REFERENCES: FIELD BOOK #725
 MURRAY-McCORMICK, INC.
 205 AS 103-D
 TITLE INSURANCE AND TRUST
 PROGRAMS REPORT
 No. 04-27250
 MEASUREMENT RECORD MAP-1016

<p>APPROVED FOR THE CITY OF PULLMAN</p> <p>APRIL 1978</p>	<p>BY</p> <p>ACR</p> <p>ARC</p>	<p>MURRAY-McCORMICK, INC. CONSULTING CIVIL ENGINEERS PLANNING SURVEYING ENGINEERING 7100 KODWATER DRIVE, SUITE 604 OAKLAND, CALIFORNIA 94612-0604</p>	<p>BOUNDARY SURVEY FOR PULLMAN TRAILMOBILE PULLMAN CALIFORNIA</p>	<p>11</p>	
	<p>SCALE</p> <p>1" = 60'</p>				<p>DATE</p> <p>APRIL 1978</p>
	<p>PROJECT NO.</p> <p>725</p>				<p>4E 9725</p>
	<p>1000-010</p>				<p>1000-010</p>