

Alviso Adobe Community Park

3465 Old Foothill Road • Pleasanton, CA
925.931.3483 www.ci.pleasanton.ca.us/services/recreation/alviso-adobe.html

The theme of this seven-acre community park and historic and interpretive site is "A Window to the Past." The main entryway frames the window, taking visitors back through three eras of the site's history: Ohlone encampment, Santa Rita Rancho, and the Meadowlark Dairy.



The path to the adobe winds by an Ohlone grinding rock, heritage oaks, and native plants. It contains a timeline, which enables visitors to learn as they walk. The park's foothill location offers spectacular views of the valley and includes gardens and orchards.

Site buildings are the Alviso Adobe, constructed in 1854, re-creations of the bunkhouse for the milking staff, and the milking barn. All are outfitted to reflect the 1920s, when the Meadowlark Dairy, California's first certified dairy, was established.

The park is open to the public every day from dawn to dusk. Buildings are open from 10 a.m. to 4 p.m. Wednesday-Sunday. Weekend programs are listed in the Pleasanton Activities Guide, and tours can be arranged with the City's naturalist.

Google Maps Google Maps





Francisco Solano Alviso Adobe

USA / California / Pleasanton /

place with historical importance, adobe structure



(http://photos.wikimapia.org/photos/110/2/1/9/6/2/0/0/0/91/61_big.jpg)



3459 Foothill Rd.
Pleasanton, CA 94588

Extending east from Foothill Road, with the San Ramon grant on the north and the Valle de San Jose grant on the south, Rancho Santa Rita was given to Jose Dolores Pacheco in 1839. The grant included more than 8,000 acres of excellent grazing land. This house on Foothill Road overlooking the valley was built by Francisco Alviso, son of Pacheco's mayordomo (ranch manager), Francisco Solano Alviso, in 1854. The house is known most recently as Meadowlark Dairy. Rancho Santa Rita won't be forgotten - the Alameda County jail recalls it to memory.

The Meadowlark Dairy was founded in the early 1900s by Walter Briggs Sr. on 153 acres on Foothill Road. Meadowlark was the first certified dairy in California, earning a Grade A designation for cleanliness and quality.

Jannes and Janna Takens immigrated to the U.S. from Holland after World War II and first moved to Berkeley where Janna's cousin who sponsored them lived. Eventually the Takens settled in Pleasanton, where they still live, and began working on the dairy. In 1958, the Takenses signed a 10-year lease for the dairy and bought it in the 1960s after Briggs' death.

The Briggs family sold the property, so Takens moved the cows from Pleasanton to Tracy in 1968 and built a milk processing plant at 57 W. Neal St., where the dairy remains today. The dairy has been a drive-through since it opened in July 1969, replacing the former drive-through dairy on Foothill Road.

The adobe is the centerpiece of the currently under-construction Alviso Adobe Community Park.

Wikipedia article: http://en.wikipedia.org/wiki/Alviso_Adobe_Community_Park
(http://en.wikipedia.org/wiki/Alviso_Adobe_Community_Park)

Nearby cities: Fremont, California, San Jose, California, Oakland, California

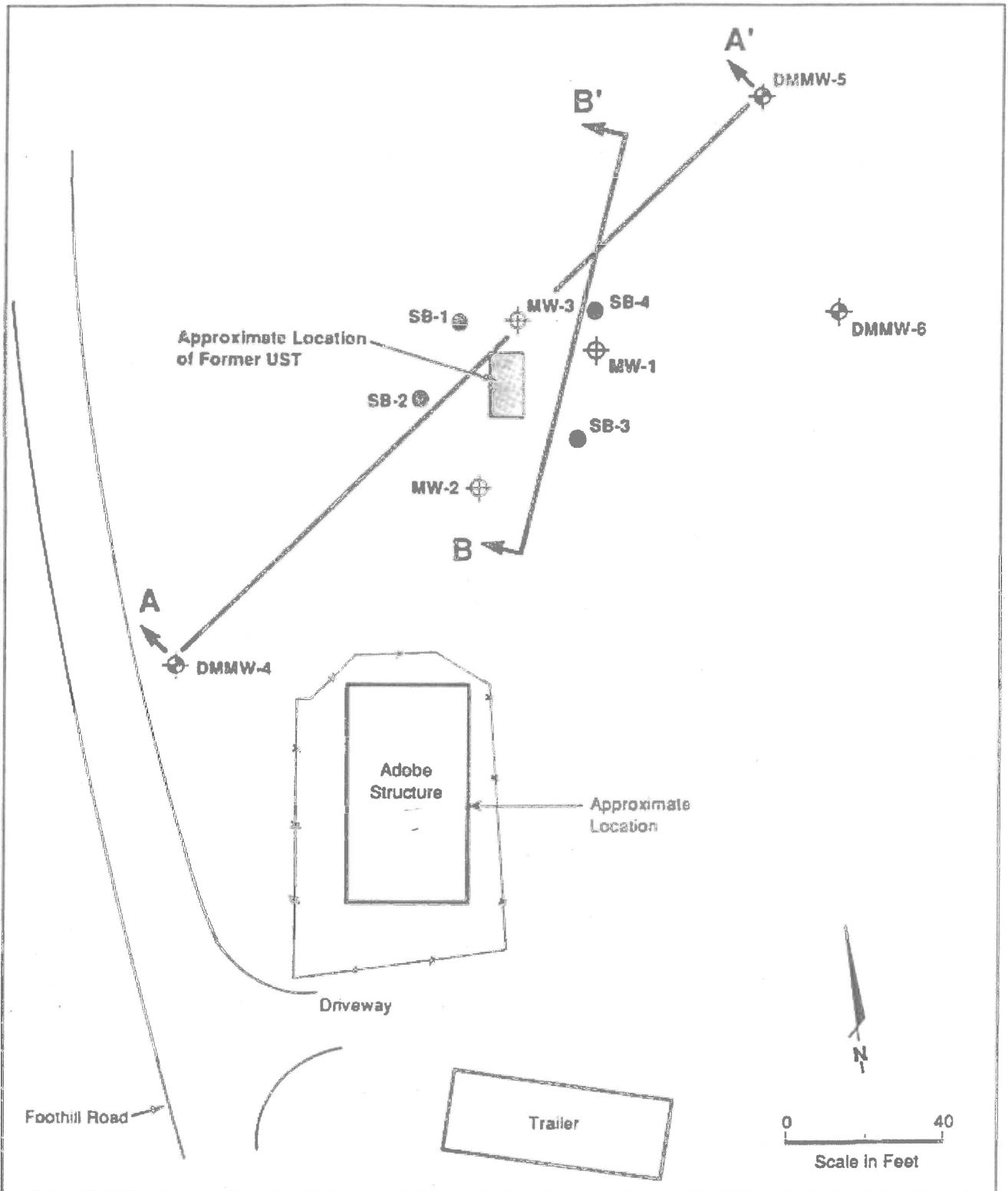
Coordinates: 37°39'39"N 121°54'46"W

Add your comment in english

Similar places Nearby places Nearby cities Nearby hotels

 **Holiday Inn Dublin - Pleasanton**
 Booking from 89USD
 4.7 km

 **Days Inn & Suites Hayward**
 Booking from 79USD
 14 km



KEY	
● SB-2	Dames & Moore Soil Boring
⊕ MW-2	Existing Monitoring Well
⊕ DMMW-4	Dames & Moore Monitoring Well
Note: Monitoring Wells Surveyed by Martin M. Ron Associates, Inc.	

SITE PLOT PLAN

Ahmanson Developments
Laguna Oaks PCE Investigation
Pleasanton, California

July 1992
14943-062-015

DAMES & MOORE

FIGURE 2

- Development and sampling of monitoring wells following installation;
- Development and sampling of the previously existing monitoring wells;
- Collection of water level measurements in each well;
- Chemical testing of selected soil and groundwater samples for PCE and petroleum hydrocarbons (BTEX);
- Preparation of interim reports on results of the geophysical survey, trenching, soil chemistry results from borings, and water quality results from the monitoring well sampling program;
- Preparation of this report summarizing our findings, conclusions, and recommendations from our investigation.

3.0 SITE HISTORY

The history of activities at the Laguna Oaks site is presented in the following subsections. The activities have been divided into three categories: (1) dairy operations (1919 to 1969), (2) activities related to environmental investigations conducted by Berlogar Consultants, and (3) activities related to environmental investigations conducted by Dames & Moore. A time line of site activities is shown in Figure 3.

3.1 DAIRY OPERATIONS

The Meadowlark Dairy began operations at the Laguna Oaks site in 1919 and continued until 1969. The dairy was originally owned by Walter Briggs and managed by Robert Dana. Buildings, fences, and/or irrigation systems were apparently constructed on the site by the early 1920s. Review of aerial photographs from 1939 to 1973 and a USGS 1961 topographic map shows a total of 11 buildings related to the dairy on the site during that time.

Industrial chemicals used at the former dairy included weed killers and cleaning detergents. The cleaning detergents reportedly used were supplied by Morgan-Gallacher, Inc., of Cudahy, California, and included "MSR," a corrosive containing phosphoric acid, and "Shur-

PLEASANTON DOWNTOWN HISTORIC CONTEXT STATEMENT

Agriculture

Dairy Farming (ca. 1915-ca. 1970)

With the onset of Prohibition in 1920, much of the hop growing area of Pleasanton transitioned to dairy farming and pasturage. Dairy farming operations quickly dominated the western side of the Amador Valley, supported by the availability of local feed from Pleasanton's grain and grass crops. Many of the dairy operators in Pleasanton were Swiss, Danish, and Portuguese.⁴⁶

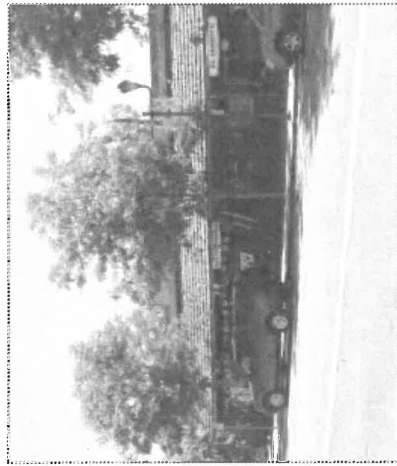
The two largest dairy operations in Pleasanton began in the 1920s. Hans Hansen and Thomas Orloff began a dairy partnership in 1921 and by the 1940s operated three separate dairy farms on 5,000 acres of land. These farms included the former site of the Pleasanton Hop Company kilns off Hopyard Road, a site immediately west of the Pleasanton Race Track, and a site at the corner of Santa Rita Road and Black Avenue.⁴⁷ The other major dairy in Pleasanton was the Meadowlark Dairy, located west of downtown Pleasanton on the Francisco Alviso Adobe property on Foothill Road. Walter Briggs founded the 152-acre dairy in 1923, operating it as Alameda County's first certified dairy until 1960.⁴⁸

The community dairy industry remained strong through the 1950s, but in the 1960s high agricultural taxes, lower profits, and demand for developable land led many farmers to sell off their herds and land. The major dairies all sold their properties by the mid-1960s, though the last owners of the Meadowlark Dairy continued processing milk at their facility at 57 West Neal Street (1969).⁴⁹

Cheesemaking

With the marked increase in commercial dairy farming in Pleasanton in the early twentieth century, cheesemaking became a small subsidiary commercial enterprise in the city. The two primary cheese-making interests in Pleasanton were the Adrianople Cheese Company, founded in 1916 by Turkish immigrant Konstantin Beratlis and the Parnassus Cheese Factory founded in the same period by Greek immigrant Jim Voultside. The Parnassus Cheese Factory, which later operated as the Standard Cheese

13-14; Hegemann and Amador-Livermore Valley Historical Society, *A History of the City of Pleasanton*, 45.
F46 Soito, *A Hundred Years of Pleasanton*, "The Most Desperate Town In the West," 21.
F47 Wainwright and Museum on Main (Pleasanton, Calif.), *Pleasanton*, 53, 60-61, 67.
F48 *Ibid.*, 65-66.
F49 *Ibid.*, 53, 60-68.



The Parnassus Cheese Company/Standard Cheese Company/Cheese Factory at 830 Main Street was built in 1916 (ARG, June 2012).