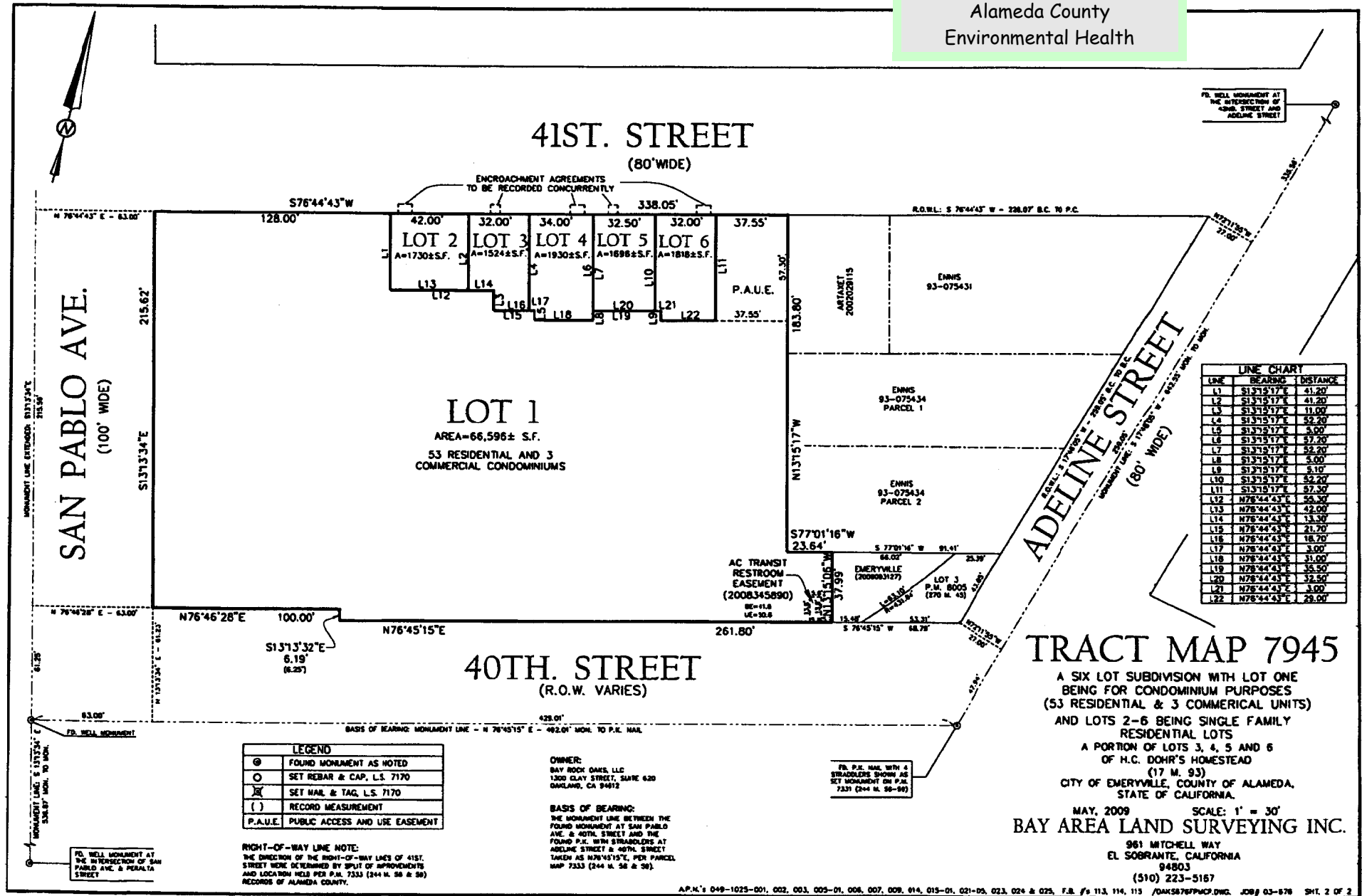


RECEIVED

9:29 am, Oct 20, 2010

Alameda County
Environmental Health



41ST. STREET
(80' WIDE)

SAN PABLO AVE.
(100' WIDE)

LOT 1
AREA=66,596± S.F.
53 RESIDENTIAL AND 3
COMMERCIAL CONDOMINIUMS

40TH. STREET
(R.O.W. VARIES)

TRACT MAP 7945

A SIX LOT SUBDIVISION WITH LOT ONE
BEING FOR CONDOMINIUM PURPOSES
(53 RESIDENTIAL & 3 COMMERCIAL UNITS)
AND LOTS 2-6 BEING SINGLE FAMILY
RESIDENTIAL LOTS
A PORTION OF LOTS 3, 4, 5 AND 6
OF H.C. DOHR'S HOMESTEAD
(17 M. 93)
CITY OF EMERYVILLE, COUNTY OF ALAMEDA,
STATE OF CALIFORNIA.

MAY, 2009 SCALE: 1" = 30'
BAY AREA LAND SURVEYING INC.

961 MITCHELL WAY
EL SOBRANTE, CALIFORNIA
94803
(510) 223-5167

LEGEND

⊙	FOUND MONUMENT AS NOTED
⊖	SET REBAR & CAP, L.S. 7170
⊗	SET NAIL & TAG, L.S. 7170
()	RECORD MEASUREMENT
P.A.U.E.	PUBLIC ACCESS AND USE EASEMENT

RIGHT-OF-WAY LINE NOTE:
THE DIRECTION OF THE RIGHT-OF-WAY LINES OF 41ST.
STREET WERE DETERMINED BY SPLIT OF APPROVEMENTS
AND LOCATION HELD PER P.M. 7333 (244 M. 58 & 59)
RECORDS OF ALAMEDA COUNTY.

OWNER:
BAY ROCK GABLE LLC
1300 CLAY STREET, SUITE 620
OAKLAND, CA 94612

BASIS OF BEARING:
THE MONUMENT LINE BETWEEN THE
FOUND MONUMENT AT SAN PABLO
AVE. & 40TH STREET AND THE
FOUND P.M. WITH STRADDLERS AT
ADELINE STREET & 40TH STREET
TAKEN AS N76°45'15" E, PER PARCEL
MAP 7333 (244 M. 58 & 59).

P.M. P.M. NAIL WITH 4
STRADDLERS SHOWN AS
SET MONUMENT ON P.M.
7331 (244 M. 58-59)

LINE CHART

LINE	BEARING	DISTANCE
L1	S13°15'17"E	41.20'
L2	S13°15'17"E	41.20'
L3	S13°15'17"E	11.00'
L4	S13°15'17"E	52.20'
L5	S13°15'17"E	5.00'
L6	S13°15'17"E	57.20'
L7	S13°15'17"E	52.20'
L8	S13°15'17"E	5.00'
L9	S13°15'17"E	5.10'
L10	S13°15'17"E	52.20'
L11	S13°15'17"E	57.20'
L12	N76°44'43"E	56.30'
L13	N76°44'43"E	42.00'
L14	N76°44'43"E	13.30'
L15	N76°44'43"E	21.20'
L16	N76°44'43"E	18.70'
L17	N76°44'43"E	3.00'
L18	N76°44'43"E	31.00'
L19	N76°44'43"E	35.50'
L20	N76°44'43"E	32.50'
L21	N76°44'43"E	3.00'
L22	N76°44'43"E	29.00'