

RECEIVED

By Alameda County Environmental Health at 9:25 am, Jul 10, 2014

**FINAL CLOSURE REPORT
OF THE
CHROMEX PLATING FACILITY**

Prepared for
**CHARLES LOWE COMPANY
1400 PARK AVENUE
EMERYVILLE, CALIFORNIA 94608-0445**

For submittal to
**ALAMEDA COUNTY HEALTH AGENCY
DIVISION OF HAZARDOUS MATERIALS
80 SWAN WAY, ROOM 200
OAKLAND, CALIFORNIA 94621**

Prepared by
**EXCEL TRANS, INC.
P.O. BOX 866
290 WEST CHANNEL ROAD
BENICIA, CALIFORNIA 94510-0866**

NOVEMBER 1, 1992

TABLE OF CONTENTS

SECTION	PAGE
1 INTRODUCTION	1
2 PROJECT OVERVIEW	1
3 OVERVIEW OF SAMPLING, TESTING, AND DISPOSITION OF WASTE	2
TABLE I: CRITERIA FOR CLASSIFICATION OF WASTE	3
TABLE II: HAZARDOUS & NONHAZARDOUS DISPOSAL FACILITIES	4
4 SITE PREPARATION	5
5 REMOVAL AND DISPOSAL OF TANK CONTENTS	5
TABLE III: VOLUME, CONSTRUCTION MATERIAL, & CONTENTS OF TANKS	6
TABLE IV: MANIFESTS AND SHIPPING DATES FOR TRANSPORT OF TANK CONTENTS AND RINSATE	6
6 REMOVAL AND DECONTAMINATION OF PROCESS AND RELATED EQUIPMENT	7
7 DECONTAMINATION AND REMOVAL OF STRUCTURAL SURFACES	7
8 INSPECTION OF FLOORS AND VAULT FOR CRACKS	8
9 REMOVAL OF CONCRETE SURFACES AND THE CONCRETE VAULT	8
10 PRESENT STATE AND FUTURE USE OF SITE	9

APPENDICES

APPENDIX A

Area, Vicinity, and Site Maps

APPENDIX B

ACHA Approval of Workplan

APPENDIX C

Manifests

APPENDIX D

Non-hazardous Disposal Receipts

APPENDIX E

Field Test Results

APPENDIX F

Analysis of Wood Siding

APPENDIX G

Analysis of Decontaminated Brick Wall and Windows

APPENDIX H

Analysis of Concrete Vault

**FINAL CLOSURE REPORT
OF THE
CHROMEX PLATING FACILITY**

**1400 PARK AVENUE
EMERYVILLE, CALIFORNIA 94608-0445
(510) 652-5900**

1 INTRODUCTION

The Chromex plating facility was a hard chrome plating shop located at 1400 Park Avenue, Emeryville, California. An area, vicinity, and site map of the Chromex facility are located in Appendix A. In January 1991 Chromex ceased all chrome plating operations and contracted Excel Trans, Inc. to perform a complete plant closure and facility decommissioning.

Excel Trans prepared and submitted to the Alameda County Health Agency (ACHA) on April 5, 1991 the "Technical Proposal and Workplan for Chromex" (hereafter called workplan) for the closure. Documented in the May 22, 1991 ACHA amendment, ACHA gave verbal approval of the workplan, and Excel Trans began closure activities on April 22, 1991. On April 17, 1992, Excel Trans submitted to ACHA a second amendment which outlined additional work at the site. The additional work commenced on June 19, 1992 and included demolition of the structure and vault. All closure activities at the site have been performed according to the ACHA approved workplan and amendments, and are documented in this report.

2 PROJECT OVERVIEW

The Chromex closure was a complete facility decommissioning and closure. Closure included the following activities:

- removal and disposal of tank contents
- removal and decontamination of equipment
- removal and/or decontamination of structural surfaces
- removal of concrete vault
- sampling of decontaminated equipment and surfaces for residue levels

The removal and disposal of tank contents was performed according to all applicable local, state, and federal regulations. Tank contents were transferred to D.O.T. containers, loaded onto registered hazardous waste haulers, and disposed at an EPA permitted treatment facility. After disposal of tank contents, workers commenced decontaminating equipment.

Equipment was washed with high pressure water, field tested for contaminant residue levels, and sorted for proper disposal. Disposition of decontaminated equipment included both nonhazardous and hazardous disposal.

During equipment cleaning, workers began decontaminating the concrete vault, steel structure, and building surfaces. However, cleaning the structure did not bring contaminant residue levels below the specified target limits. As a result, Excel Trans submitted an amendment to ACHA on April 17, 1992 which outlined the necessary steps to demolish the building structure and concrete vault. ACHA approved the amendment, and demolition of the vault began on April 29, 1992.

At present, all Chromex equipment, piping, structural supports, siding, and roofing have been transported from the site and disposed of according to all applicable local, state, and federal regulations. Only two structural surfaces remain at the site: the southern brick wall and 2/3 of the grade-level concrete floor. Analysis of samples of the washed brick wall confirm that the wall was decontaminated to acceptable residue levels (Appendix G). Further, results of a subsurface soil investigation performed in October 1992 will be used to assess the status of the grade-level concrete flooring.

The following sections of this report present details and documentation of closure activities at the site.

3 OVERVIEW OF SAMPLING, TESTING, AND DISPOSITION OF WASTE

Throughout the decontamination and dismantling process, waste was categorized as hazardous or nonhazardous and was accumulated and handled accordingly. Categorizing waste was accomplished by testing residue levels of representative samples to confirm that approved cleaning levels had been achieved.

Testing of samples included both field testing at the site and analyses at a California DHS certified laboratory. Field testing was limited to test strips for pH, chromium, and oxidizer characteristic. Certified chemical laboratory analysis of grab, rinse, and composite samples were tested for metals and pH using EPA test methods.

Testing of residue levels was used as a tool to categorize decontaminated equipment as either hazardous or nonhazardous waste. Both field and analytical tests results were used to classify waste. Residual levels for pH, chrome, and oxidizer characteristic and the corresponding waste category are outlined in Table I.

TABLE I
CRITERIA FOR CLASSIFICATION

TEST RESULTS	CLASSIFICATION
chrome: < 2ppm pH: 5 - 10 oxidizer: negative	Target residue levels for cleaned structural surfaces. Acceptable to leave at the site.
chrome: < 5 ppm ph: 5 - 10 oxidizer: negative	Nonhazardous waste for cleaned structural surfaces.
chrome: \geq 5ppm	Hazardous waste for structural surfaces.

Once waste was classified, it was handled and disposed of according to all applicable local, state, and federal regulations. For example, structural surfaces that met the acceptable residue level of <2ppm chrome were left at the site. In addition, waste that was classified as nonhazardous was disposed of at Class III landfill, wood recycling, or metal reclamation facility. Waste that was classified as hazardous waste was sent to EPA permitted disposal facilities.

Moreover, the disposition of hazardous waste defined as organic and inorganic debris was disposed of at EnviroSAFE Services of Idaho under the EPA national capacity variance for Third Third debris (55 FR 22556, June 1, 1990 and 55 FR 22650, June 1, 1991).

Documentation of hazardous and nonhazardous waste disposal is located in Appendix C and D respectively. Documentation of the disposal of waste includes the following:

- manifests
- metal reclamation receipts
- wood recycling receipts
- scavenger receipts

A list of disposal facilities and their descriptions is outlined in Table II, page 4.

TABLE II

HAZARDOUS & NONHAZARDOUS DISPOSAL FACILITIES

DISPOSAL FACILITY	FACILITY DESCRIPTION
<p>Norris Environmental Services 5215 So. Boyle Avenue Los Angeles, CA 90058</p>	<p>EPA permitted treatment facility for liquids EPA ID Number CAD097030993</p>
<p>US Ecology Highway 95 Beatty, NV 29003</p>	<p>EPA permitted Class I landfill EPA ID Number NVT330010000</p>
<p>Envirosafe Services of Idaho 10.5 miles Northwest of Grandview Missile Base Road Grandview, ID 83624</p>	<p>EPA permitted Class I landfill EPA ID Number IDD073114654</p>
<p>Aptus 11600 North Aptus Road Aragonite, UT 04029</p>	<p>EPA permitted incinerator EPA ID Number UTD981552177</p>
<p>Forward Landfill 9999 So. Austin Road Stockton, CA 95215</p>	<p>California Permitted Class III landfill CAL EPA ID Number CAD990794133</p>
<p>Sharon Metal San Jose, CA</p>	<p>Scrap recycler for metal reclamation</p>
<p>Oakland Scavenger / Davis Street Transfer Station / Altamont Landfill 2000 Embarcadero, #101 Oakland, CA 94606</p>	<p>Local Class III landfill</p>
<p>Major Salvage Company 3237 Fernside Boulevard Alameda, CA 94501</p>	<p>Wood recyclers</p>

4

SITE PREPARATION

Prior to the commencement of all work at the Chromex facility, the site was prepared for environmental remediation activities. Site preparation included training employees in project safety procedures, securing the site, and building a contamination reduction zone (CRZ) and temporary berm.

Employee training included hazardous waste worker training and site specific safety training. Excel Trans' employees received 40-hour OSHA training for hazardous waste workers (29 CFR 1910.120) and one hour of safety instructions specific to health and safety concerns at the Chromex facility. Site specific training included instruction in chemical and physical hazards, personal protective equipment, respirator training, hazard mitigation, and general safe work practices. In addition, the Site Safety Officer instructed employees on the routes to the nearest medical clinic and hospital.

After the site safety meeting was given, and before closure work activities began, Excel Trans' employees secured the Chromex site with a chain-link temporary fence. Installation of the fence restricted site access and served as a security measure for on-site storage of remediation equipment.

After the site was secured, an electrician locked-out the power supply, and Excel Trans workers constructed the CRZ and temporary berm. The CRZ was a temporary structure with separate personal protective equipment, shower/decontamination, and clean locker rooms. Site personnel were required to enter and exit through the CRZ.

The temporary berm was constructed simultaneously with the construction of the CRZ. The temporary leak proof berm enclosed the entire inside perimeter of the plating shop. The purpose of the berm was to collect and contain excess rinsate from decontamination of the equipment, piping, and surfaces.

Once the site was prepared for work activities, the workers mobilized equipment and began work activities as described in the workplan and amendments.

5

REMOVAL AND DISPOSAL OF TANK CONTENTS

Prior to closure, the Chromex facility contained eight aboveground tanks which contained plating, etching, and stripping solutions. Table III lists the volume, construction material, and contents of all eight tanks.

TABLE III

VOLUME, CONSTRUCTION MATERIAL, & CONTENTS OF TANKS

VOLUME (Gallons)	CONSTRUCTION MATERIAL	CONTENTS
3600 Gallons	Steel	Chrome Plating Solution
3200	Steel	Chrome Plating Solution
3200	Steel	Chrome Plating Solution
2800	Steel	Chrome Plating Solution
750	Polyethylene	20% Sodium Hydroxide
120	Polyethylene	20% Hydrochloric Acid
100	Polyethylene	20% Sulfuric Acid
60	Polyethylene	20% Hydrochloric Acid

TABLE IV

MANIFESTS AND SHIPPING DATES FOR TRANSPORT OF TANK CONTENTS
AND RINSATE

SHIPPING DATE	MANIFEST No.	DESCRIPTION	QUANTITY (GALLONS)
April 1, 1991	89887237	Rinsate	3,800
April 5, 1991	89887229	Chrome plating solution	4,200
April 8, 1991	89924867	Chrome plating solution	4,000
April 24, 1991	89924866	Chrome plating solution	1,000
May 29, 1991	90328817	Stripping solution	880
June 9, 1991	90328916	Chrome plating solution	330
July 12, 1991	90328987	Rinsate	4000
May 5, 1992	91716485	Rinsate	550

Beginning in April 1991, all plating, etching, and stripping solutions were pumped from the above listed tanks into vacuum trucks and were transported to Norris Environmental Services. In addition to the tank contents, rinsate contaminated with chromium which was generated during decontamination of equipment was also sent to Norris for disposal. Prior to transport, all containers were packaged, labeled, and handled according to all applicable local, state, and federal regulations. In addition, all loads were shipped on a California hazardous waste manifest as required by federal and state regulations. A registered hazardous waste hauler, Excel Trans, transported the tank contents to Norris. Table IV lists the manifests and shipping dates for shipment of tank contents and rinsate to Norris. Copies of all manifests are located in Appendix C.

6 REMOVAL AND DECONTAMINATION OF PROCESS AND RELATED EQUIPMENT

Process and related equipment at the site was removed and decontaminated prior to disposal. Equipment at the site consisted of the following:

- process and electrical piping
- fume scrubber
- rectifiers, boilers, heat exchanger, overhead crane
- polyethylene tanks
- steel tanks with rubber liners

Disposal methods for decontaminated equipment included metal reclamation, Class III landfill, and Class I landfill. Except for the rectifiers, equipment was not remarketed.

Metal piping and other metal equipment that was amenable to decontamination was cut into sections and cleaned with a high pressure steam washer. As discussed in Section 5, all wash water from metal decontamination was collected and stored on site for disposal at Norris Environmental Services. Final rinse water from decontamination was field tested for pH, chromium, and oxidizer characteristic. After field tests were performed on the final rinse water, decontaminated metallic items that met acceptable residue levels (Table I, page 3) were sent to metal reclamation for disposal. Typically, copper piping was cleaned to less than 5 ppm (Appendix E) by pressure washing, and was sent to metal reclamation. Items that were decontaminated but exceeded 5 ppm chrome (e.g.: the fume scrubber and heat exchanger) were placed in a bin for disposal at Envirosafe Services of Idaho. Nonmetallic equipment, such as polyethylene tanks and rubber tank liners, were placed directly in bins for transportation and disposal at Envirosafe Services of Idaho. Manifests documenting hazardous waste disposal are located in Appendix C.

7 DECONTAMINATION AND REMOVAL OF STRUCTURAL SURFACES

The plating room was a steel frame structure with wood siding and roofing. The north, east, and west sides of the structure were wood. The south side of the structure was a brick and glass

wall. In order to preserve the structure for later use, attempts were made to decontaminate structural surfaces in-place. Except for the southern brick wall, decontamination proved ineffective.

A pilot study for in-place decontamination confirmed that washing wood surfaces would be ineffective in reducing the chrome concentration to acceptable residue levels. For example, analysis (EPA method 1311 and 6010) of unwashed and washed wood from a pilot study showed a chrome concentration of 1,740 ppm and 121 ppm respectively (Appendix F). Thus, the siding was disposed of as hazardous waste at Envirosafe Services of Idaho.

Roofing material was removed from the structure and representative samples were field tested for residue levels (Appendix E). Roofing was found to meet acceptable residue levels and was categorized as nonhazardous. Roofing material was placed in bins for disposal to a Class III landfill and wood recycling facility. Documentation for disposal of roofing material by Oakland Scavenger is located in Appendix D.

The steel I-beams, crane, cross beams, and channel iron were removed to complete the demolition of the structure. Once removed, steel and iron pieces were decontaminated with high pressure water and sorted for disposal. Steel and iron that was below 5ppm chrome was sent to Sharon Metals for metal reclamation. Metal that field tested at 5ppm chrome or higher (Appendix E) was placed in the hazardous waste bin for disposal at Envirosafe Services of Idaho.

The southern brick and glass wall which adjoined the Charles Lowe manufacturing area was successfully decontaminated with high pressure water and was left in place. All rinsate was collected on site and disposed of according to regulations. Certificates of analysis documenting that the wall was cleaned to less than 2 ppm chrome are located in Appendix G.

8 INSPECTION OF FLOORS AND VAULT FOR CRACKS

After equipment was removed, the concrete floor and vault were inspected for cracks. The inspection revealed shallow surface cracks in the grade level and vault floors. Subsequently, surficial soil samples were taken at grade level. Complete results of the analysis, borehole locations, and chain-of-custody have been submitted to ACHA in the "Workplan for Initial Subsurface Investigation", July 24, 1992.

As a result of the surficial soil sampling and analysis, a subsurface investigation was completed in November of 1992 (see "Workplan for Initial Subsurface Investigation" submitted to ACHA on July 24, 1992). A final report documenting the results of the subsurface soil investigation was prepared for Charles Lowe for submittal to ACHA on November 4, 1992.

9 REMOVAL OF CONCRETE SURFACES AND THE CONCRETE VAULT

The closure workplan submitted to ACHA specified decontamination of the concrete floor and vault. However, attempts to decontaminate the concrete surfaces proved ineffective. Excel Trans submitted an amendment to remove the vault and concrete surfaces.

Concrete surfaces were not amenable to chemical cleaning. For example, analysis performed after chemical cleaning showed a chrome concentration of 7,200 mg/kg in a concrete vault wall sample (Appendix H). This analysis confirmed that chemical washing was inappropriate, and the original workplan was amended and submitted to ACHA on April 17, 1992.

After approval of the amendment by ACHA, Tank Excavators, Inc. was subcontracted to shore and excavate the vault. Tank Excavators applied for and received City of Emeryville excavation permit number B4301-492 on April 14, 1992. Prior to demolition, Tank Excavator shored the vault with sheetpile. During shoring, approximately 40 yd³ of soil was excavated. The soil pile was tested for California 17 metals and Volatile Organics by approved EPA methods at a DHS certified laboratory. Analysis of the soil, which was submitted to ACHA in the subsurface investigation workplan, indicated that the soil was neither a state or federally regulated waste. At present, soil has been accepted and assigned approval number 92-245 at Forward Landfill, a Class III landfill. A bill of lading documenting disposal will be submitted to ACHA as soon as the soil is transported to Forward.

After shoring was completed, the entire concrete vault was excavated and sent to Envirosafe Services of Idaho for disposal. In addition to the excavation of the vault, a portion of the concrete floor surrounding the vault was also excavated and sent to Class I landfill. Manifests documenting disposal are located in Appendix C.

10 PRESENT STATE AND FUTURE USE OF SITE

At the present time, the entire building structure has been demolished and approximately 30% of the concrete floor has been removed to expose native soil. In addition, a 10 ft deep excavation exists in the location of the former vault. The vault and soil were sampled in October 1992.

A preliminary subsurface investigation of the vault, soil, and groundwater was undertaken at the site on October 1, 1992. A summary of the findings were submitted to ACHA on November 4, 1992. As part of the summary, Excel Trans recommended that the soil in the vault be immediately excavated below the water, and that the excavated hole be refilled with gravel after analysis shows that soil chrome concentrations have dropped below a level of regulatory concern. ACHA has given verbal approval to the recommendations. Work will begin as soon as possible.

Once the pit has been filled, Charles Lowe intends to use the former Chromex site as an outdoor uncovered storage area for large equipment.

APPENDIX A

Area, Vicinity, and Site Maps



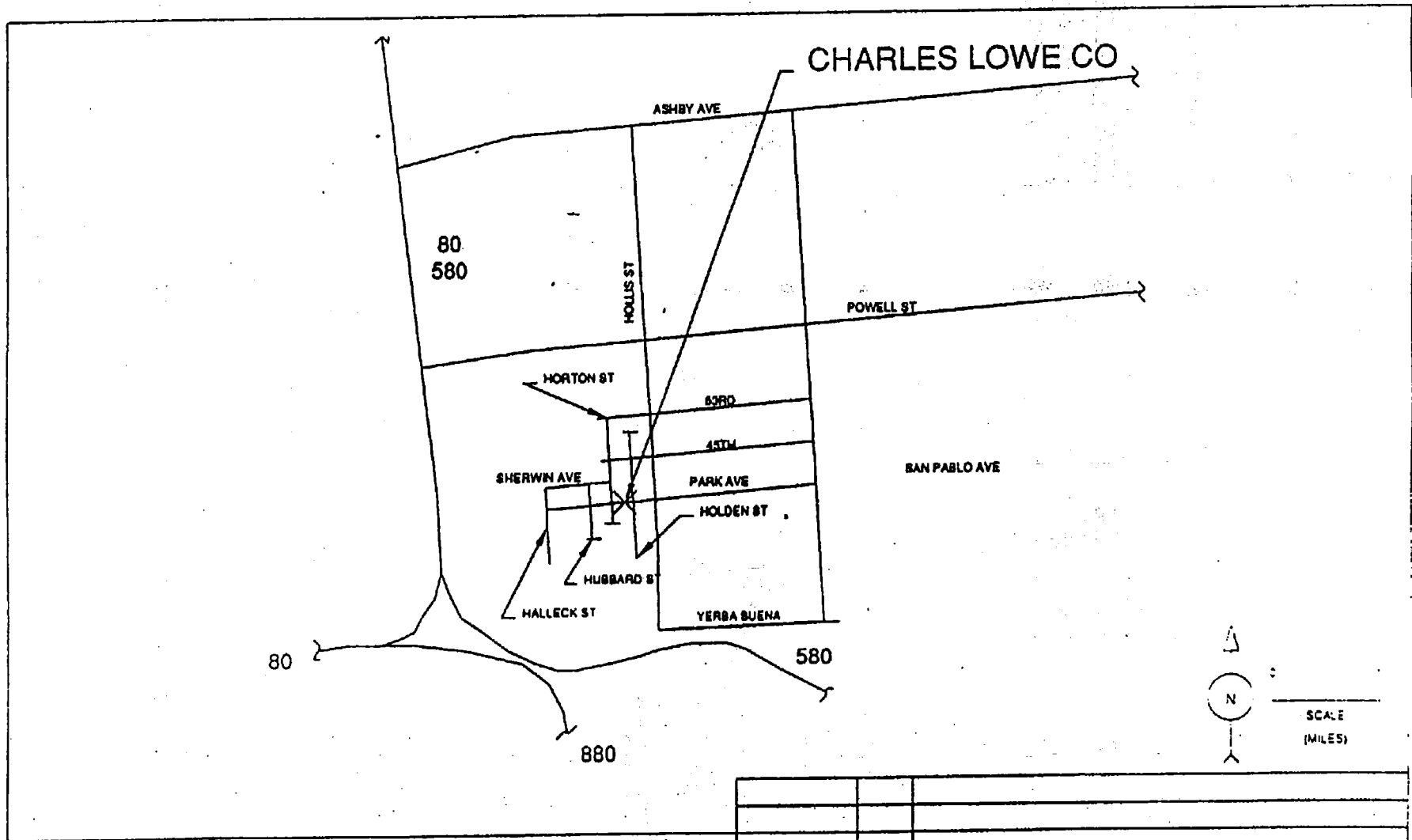
SITE

SAN FRANCISCO BAY AREA/ EMERYVILLE

CHARLES LOWE COMPANY

1400 PARK AVE

EMERYVILLE, CA 94608



AREA LAYOUT

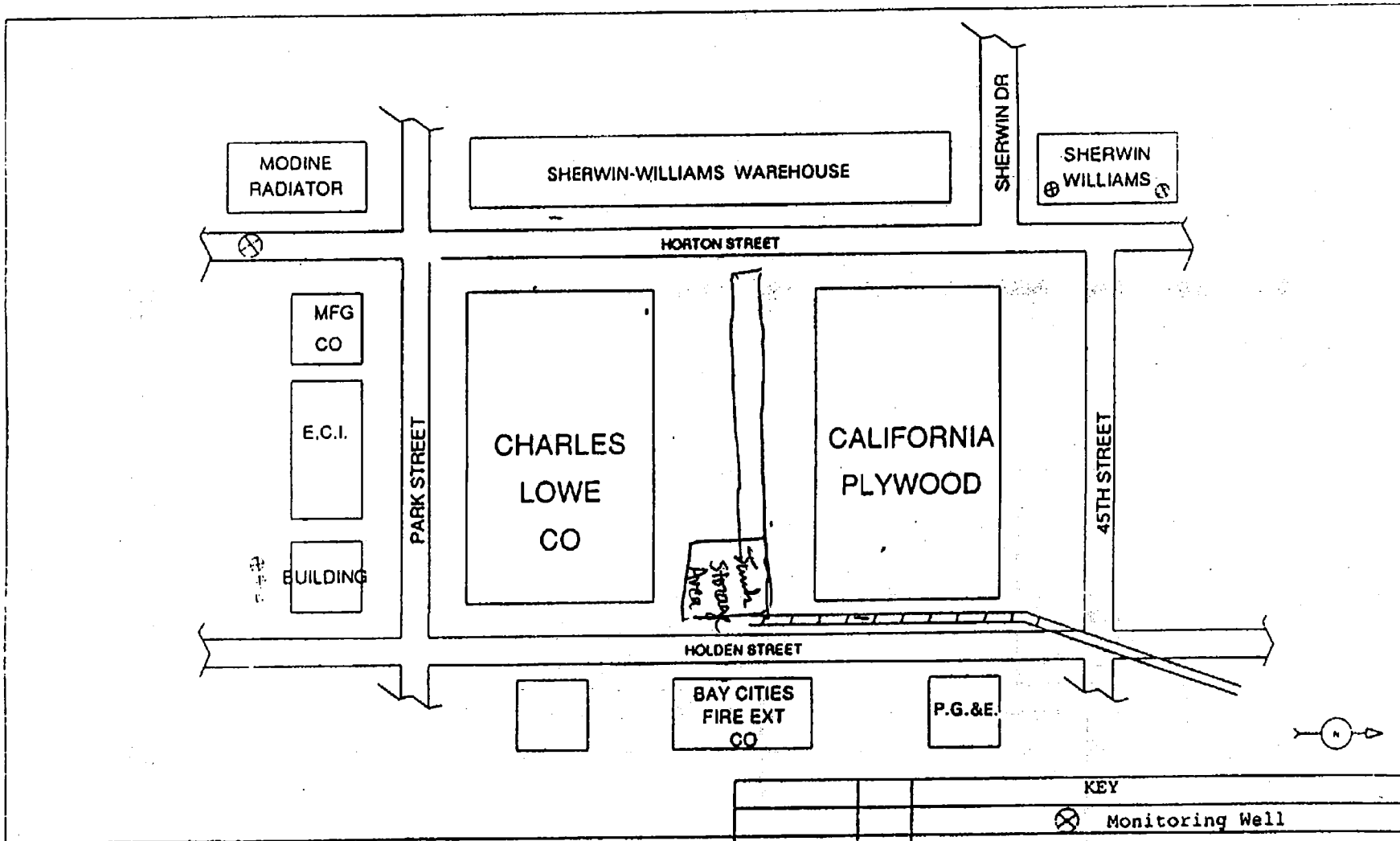
DATE	LTR	DESCRIPTION

CHARLES LOWE COMPANY

1400 PARK AVE

EMERYVILLE, CA 94608

(510) 462-5900



KEY		
⊗		Monitoring Well

VICINITY MAP

CHARLES LOWE COMPANY

1400 PARK AVE

EMERYVILLE, CA 94608

**ALAMEDA COUNTY
HEALTH CARE SERVICES**



AGENCY

DAVID J. KEARS, Agency Director

MAY 22, 1991

DEPARTMENT OF ENVIRONMENTAL HEALTH
Hazardous Materials Program
80 Swan Way, Rm. 200
Oakland, CA 94621
(415)

Mr. Fred Schappert
Charles Lowe Company
1400 Park Avenue
Emeryville, CA 94608

RE: **Workplan For Chromex, Closure of Plating Facility**
1400 Park Avenue, Emeryville, CA 94608

Dear Mr. Schappert:

The Alameda County Department of Environmental Health, Hazardous Materials Division has received and reviewed the workplan for the closure of the plating facility at the referenced site, as submitted by Excoel Trans under cover letter dated April 9, 1991. Through telephone conversation with Mr. David Nielsen of Excoel Trans, the closure plan was given a verbal approval and is acceptable subject to the following conditions:

- * All other Federal, state or local statutes, regulations, ordinances, requirements or limitations which are applicable to your project must be followed.
- * The Health and Safety Plan consistent with applicable requirements of 29 CFR 1910.120 must be followed and a complete copy must be available at the site during the closure operation.
- * The on-site storage of any hazardous waste generated by the decontamination activities must not exceed 90 days.
- * Disposal of waste generated in the closure operation must be supported by analysis by a state certified lab.
- * Field tests are acceptable as a screening tool but laboratory analysis by a state certified lab are required for verification of the extent of decontamination.
- * A time schedule for the entire closure activities must be submitted to this department.
- * A written notification for any changes or deviation in the closure workplan must be submitted and approved by this department.

Handwritten note:
Review
submitted
5/22/91

Mr. Fred Schappert
May 22, 1991
Page 2 of 2

- * Encapsulation of contaminated structures using a physical barrier such as plaster, epoxy resins, or paint is not acceptable.
- * A final report of the results of the decontamination and closure process, including all the data from all measurements, the results of all analytical procedures and copies of manifest for disposal must be submitted to this office within one month after the conclusion of closure activities.
- * After the closure operation has been completed, a final inspection by this department will be conducted.
- * Investigation for soil and/or groundwater contamination must be executed before final closure can be recommended.

Issuance of a final closure for the facility will depend on the extent to which the clean-up work done meets the requirements of this letter.

If you have any questions regarding this letter, please contact me at (415) 371-4320.

Sincerely,



Susan L. Hogo
Hazardous Materials Specialist

cc: Rafat A. Shahid, Asst. Agency Director, Environmental Health
Gil Jansen, District Attorney, Alameda County Consumer and
Environmental Protection Agency
Lester Feldman, San Francisco Bay RWQCB
Howard Hatayama, State Department of Health Services
David Nielsen, Excel Trans
Files

64

APPENDIX C

Manifests

SUMMARY OF MANIFESTS DOCUMENTING DISPOSAL

DATE SHIPPED	DISPOSAL FACILITY	MANIFEST NUMBER	DATE RECEIVED
04/01/91	Norris Environmental	89887237	04/03/91
04/05/91	Norris Environmental	89887229	04/06/91
04/08/91	Norris Environmental	89924867	04/09/91
04/24/91	Norris Environmental	89924866	04/25/91
05/29/91	Norris Environmental	90328817	05/30/91
06/20/91	Norris Environmental	90328916	06/24/91
06/26/91	Envirosafe Services of Idaho	90328909	06/27/91
07/09/91	Envirosafe Services of Idaho	90328931	07/10/91
07/12/91	Norris Environmental Services	90328987	07/13/91
07/29/91	US Ecology	89887200	08/01/91
08/27/91	Envirosafe Services of Idaho	90329052	08/28/91
03/18/92	Aptus, Inc.	91717669	03/24/92
03/26/92	Norris Environmental Services	91718071	03/26/92
03/31/92	Envirosafe Services of Idaho	91718022	04/02/92
04/29/92	Envirosafe Services of Idaho	91718026	04/30/92
05/01/92	Norris Environmental Services	91716488	05/05/92
05/04/92	Envirosafe Services of Idaho	91718094	05/05/92
05/05/92	Envirosafe Services of Idaho	91718029	05/06/92
05/05/92	Envirosafe Services of Idaho	91718092	05/07/92
05/05/92	Envirosafe Services of Idaho	91718030	05/06/92
05/07/92	Envirosafe Services of Idaho	91716474	05/07/92
05/06/92	Envirosafe Services of Idaho	91718086	05/07/92
05/06/92	Envirosafe Services of Idaho	91716475	05/07/92
05/06/92	Envirosafe Services of Idaho	91718089	05/07/92
05/06/92	Envirosafe Services of Idaho	91718090	05/07/92
05/05/92	Envirosafe Services of Idaho	91716473	05/07/92

Job 031010

UNIFORM HAZARDOUS WASTE MANIFEST		1. Generator's US EPA ID No. CAD98157322300001		Manifest Document No. 00001		2. Page 1 of 1		Information in the shaded areas is not required by Federal law.	
3. Generator's Name and Mailing Address Chromex Division - Charles Lowe Company 1400 Park Ave., Emeryville CA 94608						A. State Manifest Document Number 89887237			
4. Generator's Phone 415 853-0792						B. State Generator's ID HAHQ36-0126117			
5. Transporter 1 Company Name Excel Trans Inc.			6. US EPA ID Number CAD981112663			C. State Transporter's ID 117733		D. Transporter's Phone (707)-745-8907	
7. Transporter 2 Company Name						8. US EPA ID Number		E. State Transporter's ID	
9. Designated Facility Name and Site Address Norris Environmental Services 5215 S. Boyle Avenue Los Angeles, CA 90058						10. US EPA ID Number CAD097030993		F. Transporter's Phone	
11. US DOT Description (Including Proper Shipping Name, Hazard Class, and ID Number)						12. Containers		13. Total Quantity	
a. XQ, Hazardous Waste Liquid N.O.S. (chrome) 3M-E NA9189 DOT-E-8706 4K/1T 3500						No. Type		14. Unit Wt/Vol G	
								L Waste No. State 723 EPA/Other 8007	
b.								State EPA/Other	
c.								State EPA/Other	
d.								State EPA/Other	
J. Additional Descriptions for Materials Listed Above a) Water with 3900 ppm chrome						K. Handling Codes for Wastes Listed Above a. b. c. d.			
15. Special Handling Instructions and Additional Information Use appropriate safety gear									
16. GENERATOR'S CERTIFICATION: I hereby declare that the contents of this consignment are fully and accurately described above by proper shipping name and are classified, packed, marked, and labeled, and are in all respects in proper condition for transport by highway according to applicable international and national government regulations. If I am a large quantity generator, I certify that I have a program in place to reduce the volume and toxicity of waste generated to the degree I have determined to be economically practicable and that I have selected the practicable method of treatment, storage, or disposal currently available to me which minimizes the present and future threat to human health and the environment; OR, if I am a small quantity generator, I have made a good faith effort to minimize my waste generation and select the best waste management method that is available to me and that I can afford.									
Printed/Typed Name Steve A Skode / General Manager					Signature <i>Steve A Skode</i>			Month Day Year 8 10 1971	
17. Transporter 1 Acknowledgement of Receipt of Materials					Signature <i>Richard V. Smith</i>			Month Day Year 1 14 1971	
18. Transporter 2 Acknowledgement of Receipt of Materials					Signature			Month Day Year	
19. Discrepancy Indication Space									
20. Facility Owner or Operator Certification of receipt of hazardous materials covered by this manifest except as noted in item 19.									
Printed/Typed Name E. J. Thompson					Signature <i>E. J. Thompson</i>			Month Day Year 1 14 1971	

IN CASE OF AN EMERGENCY OR SPILL, CALL THE NATIONAL RESPONSE CENTER 1-800-424-8902; WITHIN CALIFORNIA CALL 1-800-852-7550
 888-123-4567
 GENERATOR

FACILITY

Do Not Write Below This Line

Please print or type. (Form designed for use on site (12-pitch typewriter).)

UNIFORM HAZARDOUS WASTE MANIFEST

1. Generator's US EPA ID No. **CA0091573223000071** Manifest Document No.

2. Page 1 of 1 Information in the shaded areas is not required by Federal law.

3. Generator's Name and Mailing Address
CHROMEX DIVISION - CHARLES LOWE COMPANY
1400 PARK AVE. EMERYVILLE CA. 94609

A. State Manifest Document Number
89924867

B. State Generator's ID
HAN0865012617

4. Generator's Phone **(415) 655-0792**

C. State Transporter's ID **117733**

D. Transporter's Phone **(707) 745-8901**

5. Transporter 1 Company Name
EXCEL TRANS INC. CA0091982663

E. State Transporter's ID

F. Transporter's Phone

7. Transporter 2 Company Name

G. State Facility's ID

H. Facility's Phone **(213) 588-7111**

9. Designated Facility Name and Site Address
NORRIS ENVIRONMENTAL SERVICES
5215 S. BOYLE AVENUE
LAS ANGELES CA. 90058 CA0094930993

I. US DOT Description (Including Proper Shipping Name, Hazard Class, and ID Number)

12. Containers No. Type

13. Total Quantity

14. Unit Wt/Vol

L Waste No.

RQ HAZARDOUS WASTE LIQUID NOS.
ORM-E NA 9189

001TTU4000 G

723

0007

b.

State

EPA/Other

c.

State

EPA/Other

d.

State

EPA/Other

J. Additional Descriptions for Materials Listed Above
A. HARD CHROME PLATING SOLUTION
PCN# E1805-CRO DOT-E-8706
CHROMIUM 46% / GA. COPPER 36.92PPM

K. Handling Codes for Wastes Listed Above

a.

b.

15. Special Handling Instructions and Additional Information
WEAR APPROPRIATE SAFETY GEAR

CONTACT STEVE SLATE

415-255-2423
415-652-5700

16. GENERATOR'S CERTIFICATION: I hereby declare that the contents of this consignment are fully and accurately described above by proper shipping name and are classified, packed, marked, and labeled, and are in all respects in proper condition for transport by highway according to applicable international and national government regulations.
 If I am a large quantity generator, I certify that I have a program in place to reduce the volume and toxicity of waste generated to the degree I have determined to be economically practicable and that I have selected the practicable method of treatment, storage, or disposal currently available to me which minimizes the present and future threat to human health and the environment; OR, if I am a small quantity generator, I have made a good faith effort to minimize my waste generation and select the best waste management method that is available to me and that I can afford.

Printed/Typed Name
LIBERT M TONG JR.

Signature
 [Signature]

Month Day Year
1 18 91

17. Transporter 1 Acknowledgement of Receipt of Materials
 Printed/Typed Name
R. LOU K. ALLEN

Signature
 [Signature]

Month Day Year
1 18 91

18. Transporter 2 Acknowledgement of Receipt of Materials
 Printed/Typed Name

Signature

Month Day Year

19. Discrepancy Indication Space

20. Facility Owner or Operator Certification of receipt of hazardous materials covered by this manifest except as noted in Item 19.

Printed/Typed Name
B I TAN VEEDSO

Signature
 [Signature]

Month Day Year
1 14 91

IN CASE OF AN EMERGENCY OR SPILL, CALL THE NATIONAL RESPONSE CENTER 1-800-424-8602; WITHIN CALIFORNIA CALL 1-800-852-7550

GENERATOR

TRANSPORTER

FACILITY

IN CASE OF AN EMERGENCY OR SPILL, CALL THE NATIONAL RESPONSE CENTER 1-800-424-9802; WITHIN CALIFORNIA CALL 1-800-852-7550

UNIFORM HAZARDOUS WASTE MANIFEST		1. Generator's US EPA ID No. CA00PV57322300065		Manifest Document No.		2. Page: 1 of 1		Information in the shaded areas is not required by Federal law.					
3. Generator's Name and Mailing Address CHROMEX DIVISION - CHARLES LOWE COMPANY 1400 PARK AVE. EMERYVILLE CA. 94602						A. State Manifest Document Number 89924866							
4. Generator's Phone 415-653-0792						B. State Generator's ID HAH036-DV26117							
5. Transporter 1 Company Name EXCEL TRANS INC. CA00PV982663			8. US EPA ID Number			C. State Transporter's ID 11715							
7. Transporter 2 Company Name			8. US EPA ID Number			D. Transporter's Phone (707) 745-8907							
9. Designated Facility Name and Site Address NORRIS ENVIRONMENTAL SERVICES 5215 S. BOYLE AVENUE LOS ANGELES CA. 90058 CA00PV0000903						G. State Facility's ID							
10. US EPA ID Number						H. Facility's Phone (213) 588-7111							
11. US DOT Description (Including Proper Shipping Name, Hazard Class, and ID Number) "RG HAZARDOUS WASTE LIQUID ACS ORME NA 9189						12. Containers		13. Total Quantity		14. Unit Wt/Vol		L Waste No.	
						No. Type						State 723	
						00VT		1000G		EPA/Other 0007		State	
b.										EPA/Other		State	
c.										EPA/Other		State	
d.										EPA/Other		State	
J. Additional Descriptions for Materials Listed Above A. HARD CHROME PLATING SOLUTION PCN # E1803 - CRO DOT. E-8706 CHROMIUM 46% RA. COPPER 3692 PPM						K. Handling Codes for Wastes Above a. b. c. d.							
15. Special Handling Instructions and Additional Information WEAR APPROPRIATE SAFETY GEAR ERG # 31 CONTACT STEVE SLADE 415-255-8433 415-652-5700													
16. GENERATOR'S CERTIFICATION: I hereby declare that the contents of this EPA consignment are fully and accurately described above by proper shipping name and are classified, packed, marked, and labeled, and are in all respects in proper condition for transport by highway according to applicable international and national government regulations. If I am a large quantity generator, I certify that I have a program in place to reduce the volume and toxicity of waste generated to the degree I have determined to be economically practicable and that I have selected the practicable method of treatment, storage, or disposal currently available to me which minimizes the present and future threat to human health and the environment; OR, if I am a small quantity generator, I have made a good faith effort to minimize my waste generation and select the best waste management method that is available to me and that I can afford.													
Printed/Typed Name Steve A. Slade			Signature <i>Steve A. Slade</i>			Month Day Year 08/24/91							
17. Transporter 1 Acknowledgement of Receipt of Materials													
Printed/Typed Name Richard K. Adkins			Signature <i>Richard K. Adkins</i>			Month Day Year 08/24/91							
18. Transporter 2 Acknowledgement of Receipt of Materials													
Printed/Typed Name			Signature			Month Day Year							
19. Discrepancy Indication Space													
20. Facility Owner or Operator Certification of receipt of hazardous materials covered by this manifest except as noted in Item 19.													
Printed/Typed Name ANDREW			Signature			Month Day Year 08/24/91							

GENERATOR

TRANSPORTER

FACILITY

UNIFORM HAZARDOUS WASTE MANIFEST		1. Generator's US EPA ID No. CA10918115432003	Manifest Document No. 213R1117	2. Page 1 of 1	Information in the shaded areas is not required by Federal law.
3. Generator's Name and Mailing Address CHROMEX DIVISION/CHARLES LOWE CO 1400 PARK AVE LIMEVILLE CA 4. Generator's Phone (415) 652-0792				A. State Manifest Document Number 90329817	B. State Generator's ID HAMBRE-KILB1117
5. Transporter 1 Company Name EXCEL TRANS INC.		6. US EPA ID Number CA109181198266P		C. State Transporter's ID 105532	D. Transporter's Phone 707-745-8767
7. Transporter 2 Company Name		8. US EPA ID Number		E. State Transporter's ID	F. Transporter's Phone
9. Designated Facility Name and Site Address NORRIS ENVIRONMENTAL 5215 SOUTH BOYLE AVE. LOS ANGELES CA 90058		10. US EPA ID Number CA101097030993		G. State Facility's ID	H. Facility's Phone 588-7111

11. US DOT Description (including Proper Shipping Name, Hazard Class, and ID Number)	12. Containers		13. Total Quantity	14. Unit Wt/Vol	15. Waste No.
	No.	Type			
"WRQ" Hazardous Waste Liquid, n.o.s., ORM-E, NA9189 (Chromium Sulfuric Acid)	1	DRUM	100	365 G	State: CA, EPA: 90329817
"WRQ" Hazardous Waste Liquid, n.o.s., ORM-E, NA9189 (Chromium Sulfuric Acid)	1	DRUM	100	365 G	State: CA, EPA: 90329817
"WRQ" Hazardous Waste Liquid, n.o.s., ORM-E, NA9189 (Chromium)	1	DRUM	100	365 G	State: CA, EPA: 90329817

16. Special Handling Instructions and Additional Information

In case of emergency contact Fred Meyers at (415) 653-0100
 or S. Slide at (415) 255-8433

19. Generator's Certification: I hereby declare that the contents of this consignment are fully and accurately described above by proper shipping name and are classified, packed, marked, and labeled, and are in all respects in proper condition for transport by highway according to applicable international and national government regulations.

If I am a large quantity generator, I certify that I have a program in place to reduce the volume and toxicity of waste generated to the degree I have determined to be economically practicable and that I have selected the practicable method of treatment, storage, or disposal currently available to me which minimizes the present and future threat to human health and the environment; OR, if I am a small quantity generator, I have made a good faith effort to minimize my waste generation and select the best waste management method that is available to me and that I can afford.

Printed/Typed Name: Steve A. Slide
 Signature: [Signature]
 Month Day Year: 08/12/11

17. Transporter 1 Acknowledgement of Receipt of Materials
 Printed/Typed Name: JERRY BUTLER
 Signature: [Signature]
 Month Day Year: 08/12/11

18. Transporter 2 Acknowledgement of Receipt of Materials
 Printed/Typed Name: [Blank]
 Signature: [Blank]
 Month Day Year: [Blank]

19. Discrepancy Indication Space

20. Facility Owner or Operator Certification of receipt of hazardous materials covered by this manifest except as noted in Item 19.
 Printed/Typed Name: BI TN VELASCO
 Signature: [Signature]
 Month Day Year: 08/12/11

IN CASE OF AN EMERGENCY-OR SPILL, CALL THE NATIONAL RESPONSE CENTER 1-800-424-9602 WITHIN CALIFORNIA CALL 1-800-852-7660
 GENERATOR
 TRANSPORTER
 FACILITY

Please print or type. Form designed for use on site (12-pitch typewriter).

UNIFORM HAZARDOUS WASTE MANIFEST

1. Generator's US EPA ID No.

CAD918115730036219116

Manifest Document No.

2. Page 1

of 1

Information in the shaded areas is not required by Federal law.

3. Generator's Name and Mailing Address

CHROMEX
1400 PARK AVE.
EMERYVILLE CA 94608

4. Generator's Phone

(415) 653-0792

A. State Manifest Document Number

90328916

B. State Generator's ID

11111111111111111111

C. State Transporter's ID

117720

D. Transporter's Phone

(415) 255-8433

E. State Transporter's ID

117720

F. Transporter's Phone

(415) 255-8433

5. Transporter 1 Company Name

EXCEL TRANS INC

6. US EPA ID Number

CAD9181119121613

7. Transporter 2 Company Name

8. US EPA ID Number

9. Designated Facility Name and Site Address

NORRIS ENVIRONMENTAL SERVICES
5215 SOUTH BOYLE AVENUE
LOS ANGELES, CA 90058 CAD019703107913

10. US EPA ID Number

11. US DOT Description (Including Proper Shipping Name, Hazard Class, and ID Number)

R.O. (1) HAZARDOUS WASTE LIQUID, NOS
OEME, NA9189 (D007)

12. Containers
No. Type

1 1310G

13. Total Quantity

1310G

14. Unit
Wt/Vol

15. Special Handling Instructions and Additional Information

WEAR PROTECTIVE CLOTHING
IN CASE OF AN EMERGENCY, PLEASE CONTACT STEVE SLADE
AT (415) 653-0792 OR (415) 255-8433

GENERATOR'S CERTIFICATION: I hereby declare that the contents of this consignment are fully and accurately described above by proper shipping name and are classified, packed, marked, and labeled, and are in all respects in proper condition for transport by highway according to applicable international and national government regulations.

If I am a large quantity generator, I certify that I have a program in place to reduce the volume and toxicity of waste generated to the degree I have determined to be economically practicable and that I have selected the practicable method of treatment, storage, or disposal currently available to me which minimizes the present and future threat to human health and the environment; OR, if I am a small quantity generator, I have made a good faith effort to minimize my waste generation and select the best waste management method that is available to me and that I can afford.

Printed/Typed Name

Steve A. Slade

Signature

[Signature]

Month Day Year

06/19/91

17. Transporter 1 Acknowledgement of Receipt of Materials

Printed/Typed Name

MICHAEL J. BURTON

Signature

[Signature]

Month Day Year

06/19/91

18. Transporter 2 Acknowledgement of Receipt of Materials

Printed/Typed Name

Signature

Month Day Year

19. Discrepancy Indication Space

None

20. Facility Owner or Operator Certification of receipt of hazardous materials covered by this manifest except as noted in Item 19.

Printed/Typed Name

BI TIN VELASCO

Signature

[Signature]

Month Day Year

06/19/91

IN CASE OF AN EMERGENCY OR SPILL, CALL THE NATIONAL RESPONSE CENTER 1-800-424-8902; WITHIN CALIFORNIA CALL 1-800-852-7650

UNIFORM HAZARDOUS WASTE MANIFEST

1. Generator's US EPA ID No. **CAD9811573223** Manifest Document No. **12617**

2. Page 1 of 1 Information in the shaded areas is not required by Federal law.

3. Generator's Name and Mailing Address
CHROMEX DIVISION / CHARLES LOWE CO.
1400 PARK AVE.
EMERYVILLE, CA 94608

4. Generator's Phone **(415) 653-0792**

5. Transporter 1 Company Name **EXCEL TRANS, INC.** 6. US EPA ID Number **CAD9811A82663**

7. Transporter 2 Company Name _____ 8. US EPA ID Number _____

9. Designated Facility Name and Site Address
ENVIROSAFE SERVICES OF IDAHO, INC.
10.5 MILES NORTHWEST HIGHWAY 48
MISSILE BASE ROAD
GRANDVIEW, ID 83624

10. US EPA ID Number **IDD073114654**

A. State Manifest Document Number **80328009**

B. State Generator's ID **HAHQ36-012617**

C. State Transporter's ID **HAHQ36-012617**

D. Transporter's Phone **(415) 745-2808**

11. US DOT Description (Including Proper Shipping Name, Hazard Class, and ID Number)	12. Containers		13. Total Quantity	14. Unit (Lit./Vol)
	No.	Type		
"R.O." HAZARDOUS WASTE, SOLID, NON-FLAMMABLE LIQUID (CHROMIUM CONTAMINATED METAL) (ORM-E)	1	DRUM	35	Y
b.				
c.				
d.				

15. Special Handling Instructions and Additional Information
WASTE APPROPRIATE SAFETY GEAR
ERG #31

Steve A Slade
415-255-8433

16. GENERATOR'S CERTIFICATION: I hereby declare that the contents of this consignment are fully and accurately described above by proper shipping name and are classified, packed, marked, and labeled, and are in all respects in proper condition for transport by highway according to applicable international and national government regulations.

If I am a large quantity generator, I certify that I have a program in place to reduce the volume and toxicity of waste generated to the degree I have determined to be economically practicable and that I have selected the practicable method of treatment, storage, or disposal currently available to me which minimizes the present and future threat to human health and the environment; OR, if I am a small quantity generator, I have made a good faith effort to minimize my waste generation and select the best waste management method that is available to me and that I can afford.

Printed/Typed Name: **Steve A. Slade** Signature: *Steve A. Slade* Month Day Year: **06 26 91**

17. Transporter 1 Acknowledgement of Receipt of Materials
 Printed/Typed Name: **RICK MCKOWN** Signature: *Rick McKown* Month Day Year: **06 26 91**

18. Transporter 2 Acknowledgement of Receipt of Materials
 Printed/Typed Name: _____ Signature: _____ Month Day Year: _____

19. Discrepancy Indication Space

20. Facility Owner or Operator Certification of receipt of hazardous materials covered by this manifest except as noted in item 19.
 Printed/Typed Name: **NANCY MADARIETA** Signature: *Nancy Madarieta* Month Day Year: **06 27 91**

Do Not Write Below This Line

IN CASE OF AN EMERGENCY OR SPILL, CALL THE NATIONAL RESPONSE CENTER 1-800-424-9802; WITHIN CALIFORNIA CALL 1-800-852-7550

UNIFORM HAZARDOUS WASTE MANIFEST

1. Generator's US EPA ID No. **CADAB11573223338811**
 Manifest Document No. **1**
 2. Page 1 of 1
 Information in the shaded areas is not required by Federal law.

3. Generator's Name and Mailing Address
CHIRMEX
1400 PARK AVE
EMERYVILLE, CA
 Generator's Phone **(415) 653-0792**

A. State Manifest Document Number
9032893

B. State Generator's ID
11A10R60101011

6. Transporter 1 Company Name
EXCEL TRANS
 US EPA ID Number **CADAB11A826613**

C. State Transporter's ID
10R163
 D. Transporter's Phone
707-745-1017

7. Transporter 2 Company Name
 US EPA ID Number

E. State Transporter's ID
 F. Transporter's Phone

9. Designated Facility Name and Site Address
ENVIRONSAFE SERVICES OF IDAHO, INC.
10 1/2 MILES NW GRANDVIEW
MISSILE BASE ROAD
GRANDVIEW, IDAHO 83624
 US EPA ID Number **11DD0811465H**

G. State Facility's ID
 H. Facility's Phone

11. US DOT Description (Including Proper Shipping Name, Hazard Class, and ID Number)	12. Containers		13. Total Quantity	14. Unit, Wt/Vol
	No.	Type		
"R.Q." (I) HAZARDOUS WASTE, SOLID, NOS, ORM-E, NA9189 (DOT?)	00	00000035	Y	

15. Special Handling Instructions and Additional Information
Wear protective clothing. In case of an emergency, please contact Steve Slade at (415) 653-0792 or (415) 255-8433

16. GENERATOR'S CERTIFICATION: I hereby declare that the Contents of this consignment are fully and accurately described above by proper shipping name and are classified, packed, marked, and labeled, and are in all respects in proper condition for transport by highway according to applicable international and national government regulations.
 If I am a large quantity generator, I certify that I have a program in place to reduce the volume and toxicity of waste generated to the degree I have determined to be economically practicable and that I have selected the practicable method of treatment, storage, or disposal currently available to me which minimizes the present and future threat to human health and the environment; OR, if I am a small quantity generator, I have made a good faith effort to minimize my waste generation and select the best waste management method that is available to me and that I can afford.

Printed/Typed Name **Steve A Slade** Signature **[Signature]** Month Day Year **10/17/91**

17. Transporter 1 Acknowledgement of Receipt of Materials
 Printed/Typed Name **Rick McKown** Signature **[Signature]** Month Day Year **07/09/91**

18. Transporter 2 Acknowledgement of Receipt of Materials
 Printed/Typed Name _____ Signature _____ Month Day Year _____

19. Discrepancy Indication Space

20. Facility Owner or Operator Certification of receipt of hazardous materials covered by this manifest except as noted in item 19.
 Printed/Typed Name **NANCY MADARIEDA** Signature **[Signature]** Month Day Year **07/10/91**

IN CASE OF AN EMERGENCY OR SPILL, CALL THE NATIONAL RESPONSE CENTER 1-800-424-8802; WITHIN CALIFORNIA CALL 1-800-852-7650

Do Not Write Below This Line
RECEIVED JUL 16 '91

GREEN: HAULER RETAINS

UNIFORM HAZARDOUS WASTE MANIFEST

1. Generator's US EPA ID No. **CAD98115730732881817**
Manifest Document No. **1817**

2. Page 1 of 1

Information in the shaded areas is not required by Federal law.

3. Generator's Name and Mailing Address
**CHROME
1400 PARK AVE
EMERYVILLE CA 94608**

A. State Manifest Document Number
90328987

B. State Generator's ID
HAA08601261173

4. Generator's Phone **(415) 653-0792**

C. State Transporter's ID
117722

D. Transporter's Phone
(707) 745-2100

5. Transporter 1 Company Name
EXCEL TRANS

E. State Transporter's ID
117722

F. Transporter's Phone
(707) 745-2100

6. US EPA ID Number
CAD9811982663

7. Transporter 2 Company Name

8. US EPA ID Number

9. Designated Facility Name and Site Address
**MORRIS ENVIRONMENTAL SERVICES
5215 SOUTH BOYLE AVENUE
LOS ANGELES, CA 90038**

10. US EPA ID Number
ICAD007030973

11. US DOT Description (Including Proper Shipping Name, Hazard Class, and ID Number)	12. Containers		13. Total Quantity	14. Unit Wt/Vol
	No.	Type		
a. R.O.(1) HAZARDOUS WASTE LIQUID, NOS ORME, NAHIZI (D007)				
b. <i>(illegible)</i>				
c. <i>(illegible)</i>				
d. <i>(illegible)</i>				

15. Special Handling Instructions and Additional Information
**WEAR PROTECTIVE CLOTHING IN CASE OF AN EMERGENCY. PLEASE CONTACT STEVE SLADE AT (415) 653-0792 OR (415) 355-8433
DOT # 8706**

16. GENERATOR'S CERTIFICATION: I hereby declare that the contents of this consignment are fully and accurately described above by proper shipping name and are classified, packed, marked, and labeled, and are in all respects in proper condition for transport by highway according to applicable international and national government regulations.
If I am a large quantity generator, I certify that I have a program in place to reduce the volume and toxicity of waste generated to the degree I have determined to be economically practicable and that I have selected the practicable method of treatment, storage, or disposal currently available to me which minimizes the present and future threat to human health and the environment; OR, if I am a small quantity generator, I have made a good faith effort to minimize my waste generation and select the best waste management method that is available to me and that I can afford.

Printed/Typed Name **Steve A Slade** Signature *Steve A Slade* Month Day Year **X 11/14/90**

17. Transporter 1 Acknowledgement of Receipt of Materials
Printed/Typed Name **Charles K. Poyton** Signature *Charles K. Poyton* Month Day Year **10/12/90**

18. Transporter 2 Acknowledgement of Receipt of Materials
Printed/Typed Name _____ Signature _____ Month Day Year _____

19. Discrepancy Indication Space

20. Facility Owner or Operator Certification of receipt of hazardous materials covered by this manifest except as noted in Item 19.
Printed/Typed Name **Steve Slade** Signature *Steve Slade* Month Day Year **07/13/91**

IN CASE OF AN EMERGENCY OR SPILL, CALL THE NATIONAL RESPONSE CENTER 1-800-424-8802; WITHIN CALIFORNIA CALL 1-800-852-7650

RECEIVED 11/16/90 GREGG HAULER RETAINS

UNIFORM HAZARDOUS WASTE MANIFEST		1. Generator's US EPA ID No. CA090151700P 8131010		Manifest Document No. 8131010		2. Page 1 of 1		Information in the shaded areas is not required by Federal law.						
3. Generator's Name and Mailing Address CHROME 1400 FARM AVE MENDOCINO CA 95620 Generator's Phone 415-652-0717						A. State Manifest Document Number 89887200								
5. Transporter 1 Company Name L... ..						6. US EPA ID Number CA090151700P		C. State Transporter's ID 117726-117						
7. Transporter 2 Company Name						8. US EPA ID Number		D. Transporter's Phone 707-745-8907						
9. Designated Facility Name and Site Address VECOLOGY HIGHWAY 95, P.O. BOX 536 FEATIS, NV 89403						10. US EPA ID Number UNTERIOR0101010		G. State Facility's ID						
								H. Facility's Phone 707-553-2203						
11. US DOT Description (Including Proper Shipping Name, Hazard Class, and ID Number)						12. Containers No. Type		13. Total Quantity		14. Unit WT/Vol		1. Waste No.		
a. RQ HAZARDOUS SOLID N.O.S., ORN-E, NAT'L (REG...)						11		1		K		State 261 EPA/Other PCB-5		
b.												State EPA/Other		
c.												State EPA/Other		
d.												State EPA/Other		
J. Additional Descriptions for Materials Listed Above DRUM ILCRX-37 MAY DRUMS, P.E. EACH 23 LBS EACH 5-1 P... -1351 UNIVERSITY OF CALIFORNIA NVI-... UNIVERSITY OF CALIFORNIA NVI-... UNIVERSITY OF CALIFORNIA NVI-...						K. Handling Codes for Wastes Listed Above								
15. Special Handling Instructions and Additional Information UNIVERSITY OF CALIFORNIA NVI-... UNIVERSITY OF CALIFORNIA NVI-... UNIVERSITY OF CALIFORNIA NVI-...														
16. GENERATOR'S CERTIFICATION: I hereby declare that the contents of this consignment are fully and accurately described above by proper shipping name and are classified, packed, marked, and labeled, and are in all respects in proper condition for transport by highway according to applicable international and national government regulations. If I am a large quantity generator, I certify that I have a program in place to reduce the volume and toxicity of waste generated to the degree I have determined to be economically practicable and that I have selected the practicable method of treatment, storage, or disposal currently available to me which minimizes the present and future threat to human health and the environment; OR, if I am a small quantity generator, I have made a good faith effort to minimize my waste generation and select the best waste management method that is available to me and that I can afford.														
Printed/Typed Name Steve E...						Signature <i>[Signature]</i>			Month Day Yr 01/22/87					
17. Transporter 1 Acknowledgement of Receipt of Materials						Printed/Typed Name ...			Signature <i>[Signature]</i>			Month Day Yr 01/22/87		
18. Transporter 2 Acknowledgement of Receipt of Materials						Printed/Typed Name			Signature			Month Day Yr		
19. Discrepancy Indication Space														
20. Facility Owner or Operator Certification of receipt of hazardous materials covered by this manifest except as noted in Item 19.														
Printed/Typed Name David Robert						Signature <i>[Signature]</i>			Month Day Yr 01/22/87					

IN CASE OF AN EMERGENCY OR SPILL, CALL THE NATIONAL RESPONSE CENTER 1-800-424-8802; WITHIN CALIFORNIA CALL 1-800-852-7550
 GENERATOR
 TRANSPORTER
 FACILITY

UNIFORM HAZARDOUS WASTE MANIFEST

1. Generator's EPA ID No. **CA15911573222**
Manifest Document No. **271512**

2. Page 1 of 1
Information in the shaded areas is not required by Federal law.

3. Generator's Name and Mailing Address
**CHROME
1400 PARK AVE
GRANDVIEW, IL**

A. State Manifest Document Number
90329052

5. Transporter 1 Company Name **EXC TRANS**
US EPA ID Number **CA15911573222**

B. State Generator's ID
111111111111111111

6. Transporter 2 Company Name **CA15911573222**
US EPA ID Number **662**

C. State Transporter's ID
111111111111111111

9. Designated Facility Name and Site Address
**EST
OV. M. NW Grandview, Missile Base Road
Grandview, IL 62102**

D. Transporter's Phone
100381

E. State Transporter's ID
1017458901

F. Transporter's Phone
100381

G. State Facility's ID
111111111111111111

H. Facility's Phone
111111111111111111

11. US DOT Description (Including Proper Shipping Name, Hazard Class, and ID Number)	12. Containers		13. Total Quantity	14. Unit Wt/Vol	15. Waste No.
	No.	Type			
a. RG Hazardous Waste, Sol. & MOS, ORMEL, NA9189 (CORROSIVE)					001CM10020 Y
b. RG HAZARDOUS WASTE, SOLID, ORMEL NA9189					(001CM10020 Y
c.					
d.					

J. Additional Descriptions for Materials Listed Above
ALL HAZARDOUS WASTE

K. Handling Codes for Wastes Listed Above
1

15. Special Handling Instructions and Additional Information
**Wear protective gloves cloth ER6 #31
EMERGENCY PHONE: 1415 1653-0797 OR 415 1250-4433**

16. GENERATOR'S CERTIFICATION: I hereby declare that the contents of this consignment are fully and accurately described above by proper shipping name and are classified, packed, marked, and labeled, and are in all respects in proper condition for transport by highway according to applicable international and national government regulations.
If I am a large quantity generator, I certify that I have a program in place to reduce the volume and toxicity of waste generated to the degree I have determined to be economically practicable and that I have selected the practicable method of treatment, storage, or disposal currently available to me which minimizes the present and future threat to human health and the environment; OR, if I am a small quantity generator, I have made a good faith effort to minimize my waste generation and select the best waste management method that is available to me and that I can afford.

Printed/Typed Name: **Steve Wade** Signature: *Steve Wade* Month Day Year: **06/27/14**

17. Transporter 1 Acknowledgement of Receipt of Materials
Printed/Typed Name: **Don McKeown** Signature: *Don McKeown* Month Day Year: **01/22/14**

18. Transporter 2 Acknowledgement of Receipt of Materials
Printed/Typed Name: Signature: Month Day Year:

19. Discrepancy Indication Space
**115. RG Hazardous Waste Solid, N.C.S., ORA1-E, NA9189 (0007)
3. zip code omitted**

20. Facility Owner or Operator Certification of Receipt of hazardous materials covered by this manifest except as noted in item 19.
Printed/Typed Name: **Steve Emerson** Signature: *Steve Emerson* Month Day Year: **06/28/14**

IN CASE OF AN EMERGENCY OR SPILL, CALL THE NATIONAL RESPONSE CENTER 1-800-424-8802; WITHIN CALIFORNIA CALL 1-800-852-7550

GENERATOR

TRANSPORTER

FACILITY

WL # 00258

See instructions on back of page 6.

UNIFORM HAZARDOUS WASTE MANIFEST		1. Generator's US EPA ID No.	Manifest Document No.	2. Page 1	Information in the shaded areas is not required by Federal law.
3. Generator's Name and Mailing Address		Chromax 1400 Park Avenue Emeryville, CA 94609		A. State Manifest Document Number	9171768
4. Generator's Phone		510 553-0732		B. State Generator ID	111036018027
5. Transporter 1 Company Name		6. US EPA ID Number		C. State Transporter ID	215582
Exced Trans, Inc.		CA 9931902663		D. Transporter Phone	907-145-8007
7. Transporter 2 Company Name		8. US EPA ID Number		E. State Transporter ID	
9. Designated Facility Name and Site Address		10. US EPA ID Number		F. Transporter's Phone	
Aptus, Inc. 11600 North Aptus Road Argente, UT 84029		UT D 961552177		G. State Facility ID	
11. US DOT Description (Including Proper Shipping Name, Hazard Class, and ID Number)		12. Containers	13. Total Quantity	14. Unit Wt/Vol	15. Waste Number
H0 (10) Acetic Chromic Acid Solution, Corrosive Material, UN1755		No. Type			
		001 JF	0055		
Additional Descriptors for Material Listed Above		E. Handling Codes for Material Listed Above			
A.S. Profile # 4591-0559					
15. Special Handling Instructions and Additional Information					
Wear protective clothing. In case of an emergency, contact Steve Slade at (415) 653-0792 or (415) 255-8433.					
16. GENERATOR'S CERTIFICATION: I hereby declare that the contents of this consignment are fully and accurately described above by proper shipping name and are classified, packed, marked, and labeled, and are in all respects in proper condition for transport by highway according to applicable international and national government regulations. If I am a large quantity generator, I certify that I have a program in place to reduce the volume and toxicity of waste generated to the degree I have determined to be economically practicable and that I have selected the practicable method of treatment, storage, or disposal currently available to me which minimizes the present and future threat to human health and the environment; OR, if I am a small quantity generator, I have made a good faith effort to minimize my waste generation and select the best waste management method that is available to me and that I can afford.					
Printed/Typed Name		Signature		Month Day Year	
EMMET LITT		[Signature]		11/1/91	
17. Transporter 1 Acknowledgement of Receipt of Materials					
Printed/Typed Name		Signature		Month Day Year	
[Name]		[Signature]		11/2/91	
18. Transporter 2 Acknowledgement of Receipt of Materials					
Printed/Typed Name		Signature		Month Day Year	
19. Discrepancy Indication Space					
20. Facility Owner or Operator Certification of receipt of hazardous materials covered by this manifest except as noted in Item 19.					
Printed/Typed Name		Signature		Month Day Year	
Dorothy G. Diamond		[Signature]		11/24/91	

IN CASE OF EMERGENCY OR SPILL, CALL THE NATIONAL RESPONSE CENTER 1-800-424-9802. WITHIN CALIFORNIA, CALL 1-800-852-7550
 91717680
 GENERATOR
 TRANSPORTER
 FACILITY

DO NOT WRITE BELOW THIS LINE.

Green: HAULER RETAINS

UNIFORM HAZARDOUS WASTE MANIFEST		1. Generator's US EPA ID No. D0001577555	Manifest Document No. 14641	2. Page 1 of 1	Information in the shaded areas is not required by Federal law.
3. Generator's Name and Mailing Address Chromo. 1400 Park Avenue Emeryville, CA 94508			A. State Manifest Document Number 9171807		
4. Generator's Phone 510 652-5900			B. State Generator's ID H A 0 0 5 0 0 0 5 1 0		
5. Transporter 1 Company Name Excel Trans, Inc		6. US EPA ID Number C A P 9 8 1 9 8 2 6 6 3		C. State Transporter's ID 47577	
7. Transporter 2 Company Name		8. US EPA ID Number		D. Transporter's Phone 707 745-8907	
9. Designated Facility Name and Site Address Norris Environmental Services 5212 South Boyle Avenue Los Angeles, CA 90058			10. US EPA ID Number C A P 0 9 7 0 3 0 9 9 3		E. State Transporter's ID
			F. Transporter's Phone		G. State Facility's ID
			H. Facility's Phone		
11. US DOT Description (including Proper Shipping Name, Hazard Class, and ID Number)		12. Containers No. Type	13. Total Quantity	14. Unit WT/Vol	15. Waste Name
a. RQ(1) Hazardous Waste Liquid, NOS, ORME, NA9109 (chromium)		0 0 1 T T 0 8 5 0 0 3		G	SLURRY
b.					SLURRY
c.					SLURRY
d.					SLURRY
16. Additional Description for Material Listed Above i.e., Profile 1R1803CR3		K. Handling Codes for Material Listed Above			
15. Special Handling Instructions and Additional Information Wear protective clothing. In case of an emergency, contact Steve Wade at (510) 653-0792 or (415) 255-8433.					
16. GENERATOR'S CERTIFICATION: I hereby declare that the contents of this consignment are fully and accurately described above by proper shipping name and are classified, packed, marked, and labeled, and are in all respects in proper condition for transport by highway according to applicable international and national government regulations. If I am a large quantity generator, I certify that I have a program in place to reduce the volume and toxicity of waste generated to the degree I have determined to be economically practicable and that I have selected the practicable method of treatment, storage, or disposal currently available to me which minimizes the present and future threat to human health and the environment; OR, if I am a small quantity generator, I have made a good faith effort to minimize my waste generation and select the best waste management method that is available to me and that I can afford.					
Printed/typed Name Steve A. Wade		Signature <i>Steve Wade</i>		Month Day Year 01 12 1988	
17. Transporter 1 Acknowledgment of Receipt of Materials Printed/typed Name <i>Richard [unclear]</i>		Signature <i>[Signature]</i>		Month Day Year 01 12 1988	
18. Transporter 2 Acknowledgment of Receipt of Materials Printed/typed Name		Signature		Month Day Year	
19. Discrepancy Indication Space					
20. Facility Owner or Operator Certification of receipt of hazardous materials covered by this manifest except as noted in item 19. Printed/typed Name Samie L. Green					
Signature <i>Samie L. Green</i>		Signature <i>[Signature]</i>		Month Day Year 03 12 1991	

IN CASE OF EMERGENCY OR SPILL, CALL THE NATIONAL RESPONSE CENTER 1-800-424-9802. WITHIN CALIFORNIA, CALL 1-800-852-7550

GENERATOR
TRANSPORTER
FACILITY

DO NOT WRITE BELOW THIS LINE.

UNIFORM HAZARDOUS WASTE MANIFEST
 1. Generator's US EPA ID No. CA 0901573223
 Manifest Document No. 190022
 2. Page 1 of 1
 Information if the State Manifest Document Number is not required by the State

3. Generator's Name and Mailing Address
Chromex
1400 Park Avenue
Emeryville, CA 94608

4. Generator's Phone
510 652-5900

5. Transporter 1 Company Name
Excel Trans, Inc.

6. US EPA ID Number
CA 0901982663

7. Transporter 2 Company Name

8. US EPA ID Number

9. Designated Facility Name and Site Address
Envirosafe Services of Idaho, Inc.
10.5 Miles NW Grandview
Missile Base Road
Grandview, Oregon 97030

10. US EPA ID Number
ID 0073146841

11. Hazardous Waste, Solid, NOS, ORNR, WA9189 (Optional)	12. Containers		13. Total Quantity	14. Unit Wt/Vol
	No.	Type		
0 Hazardous Waste, Solid, NOS, ORNR, WA9189 (Optional)	001	CM	00020	Y
0 Hazardous Waste, Solid, NOS, ORNR, WA9189 (Optional)	001	CM	00020	Y

Use appropriate safety gear.
 In case of an emergency, contact Steve Slade at (503) 652-5900 ext. 415-115.

GENERATOR'S CERTIFICATION: I hereby declare that the contents of this container are fully and accurately described above by proper waste name and are properly labeled and closed, and are in all respects in proper condition for transport by highway according to applicable international and national government regulations.
 I, as a large quantity generator, I certify that I have a program in place to reduce the volume and toxicity of waste generated to the degree I have determined to be economically practicable and that I have selected the practicable method of treatment, storage, or disposal currently available to me which minimizes the present and future threat to human health and the environment. OR, if I am a small quantity generator, I have made a good faith effort to minimize my waste generation and select the best management method that is available to me and that I can afford.

Printed/Typed Name: **Steve A. Slade**
 Signature: *Steve Slade*
 Month/Day/Year: **01/13/1991**

17. Transporter 1 Acknowledgment of Receipt of Material
 Printed/Typed Name: **R. McKown**
 Signature: *R. McKown*
 Month/Day/Year: **01/13/1991**

18. Transporter 2 Acknowledgment of Receipt of Material
 Printed/Typed Name: _____
 Signature: _____
 Month/Day/Year: _____

19. Declassification/Disposition

20. Facility Name, Address, and State of Hazardous Materials
 Printed/Typed Name: _____
 Signature: *_____*
 Month/Day/Year: **01/10/1991**

IN CASE OF EMERGENCY OR SPILL, CALL THE NATIONAL RESPONSE CENTER FOR CHEMICAL HAZARDOUS WASTE IN CALIFORNIA, CALL 1-800-452-7550

UNIFORM HAZARDOUS WASTE MANIFEST		1. Generator's US EPA ID No.	Manifest Document No.	2. Page 1 of	Information in the shaded areas is not required by Federal law.
3. Generator's Name and Mailing Address Chromax 1400 Park Avenue Emeryville, CA 94603		6. US EPA ID Number C A D D R I P P P 6 + 0		A. State Manifest Document Number 9171802	
4. Generator's Phone 510 652-5900		8. US EPA ID Number P I I I I I I I I I		B. State Generator's ID P R 5 0 4 0 6 1 0	
5. Transporter 1 Company Name Excal Trans. Inc.		10. US EPA ID Number I I D I D I O I 7 I 3 I 1 I 1 4 I 6 I 5 I 4		C. State Transporter's ID 3 3	
7. Transporter 2 Company Name				D. Transporter's Phone 707-749-6007	
9. Designated Facility Name and Site Address Envirosafe Services of Idaho, Inc. 10.5 Miles NW Grandview Hissile Base Road Grandview, Idaho 83624				E. State Transporter's ID	
				F. Transporter's Phone	
				G. State Facility's ID	
				H. Facility's Phone	
11. US DOT Description (Including Proper Shipping Name, Hazard Class, and ID Number)		12. Containers No. Type	13. Total Quantity	14. Unit Wt/Vol	Waste Number
a. RC Hazardous Waste, Solid, NOS, ORME NA9189 (chromium)		0 0 1 C H	0 0 0 2 0	Y	RC
b. RC Hazardous Waste, Solid, NOS, ORME NA9189 (chromium)		0 0 1 C H	0 0 0 2 0	Y	RC
c.					
d.					
Additional Description for Materials (See 49 CFR 173.13)		K. Handling Codes (See 49 CFR 173.13)			
11.a. PC1124700 (Inorganic solid debris contaminated with chromium)		a			
11.b. PC1124700 (Organic/inorganic debris contaminated with chromium)		b			
15. Special Handling Instructions and Additional Information					
In case of an emergency, contact Steve Slade at (510)652-5900 or (415)255-8433. Wear gloves, tyvek & appropriate safety gear.					
16. GENERATOR'S CERTIFICATION: I hereby declare that the contents of this consignment are fully and accurately described above by proper shipping name and are classified, packed, marked, and labeled, and are in all respects in proper condition for transport by highway according to applicable international and national government regulations. If I am a large quantity generator, I certify that I have a program in place to reduce the volume and toxicity of waste generated to the degree I have determined to be economically practicable and that I have selected the practicable method of treatment, storage, or disposal currently available to me which minimizes the present and future threat to human health and the environment; OR, if I am a small quantity generator, I have made a good faith effort to minimize my waste generation and select the best waste management method that is available to me and that I can afford.					
Printed/Typed Name Steve A. [unclear]		Signature [Signature]		Month Day Year 04 12 1991	
17. Transporter 1 Acknowledgement of Receipt of Materials Printed/Typed Name [unclear]		Signature [Signature]		Month Day Year 04 12 1991	
18. Transporter 2 Acknowledgement of Receipt of Materials Printed/Typed Name		Signature		Month Day Year	
19. Discrepancy Indication Space					
20. Facility Owner or Operator Certification of receipt of hazardous materials covered by this manifest except as noted in item 19.					
Printed/Typed Name SARA REUSE		Signature [Signature]		Month Day Year 04 12 1991	

9171802
 IN CASE OF EMERGENCY OR SPILL, CALL THE NATIONAL RESPONSE CENTER, 1-800-424-8802; WITHIN CALIFORNIA, CALL 1-800-852-7550

DO NOT WRITE BELOW THIS LINE.

UNIFORM HAZARDOUS WASTE MANIFEST		1. Generator's US EPA ID No. CA121217111111111111111111	Manifest Document No. 1 1 5 1 4 1 5 1 8	2. Page 1 of 1	Information in the shaded areas is not required by Federal law.
3. Generator's Name and Mailing Address Excel Trans, Inc. 2230 Park Avenue, Haywardville, CA 94602 Generator's Phone (510) 552-5900 Emergency contact: Steve Slade			A. State Manifest Document Number 9171648		
5. Transporter 1 Company Name Excel Trans, Inc.			B. State Generator's ID H N H 1 2 3 4 5 6 7 8 9 1 0 1 1 2 3 4 5 6 7		
7. Transporter 2 Company Name			C. State Transporter's ID 215481		
9. Designated Facility Name and Site Address Morris Environmental Services 5215 S. Boyle Avenue Los Angeles, CA 90056			D. Transporter's Phone (707) 743-8907		
11. US DOT Description (Including Proper Shipping Name, Hazard Class, and ID Number)			E. State Transporter's ID		
a. Hazardous Waste Liquid, N.O.S., ORM-S NA 9159 (Sodium hydroxide, chrome)			12. Containers No. Type	13. Total Quantity	14. Unit Wt/Vol
			002 D, R	001/00	G
b. Hazardous Waste Liquid, N.O.S., ORM-S NA 9189 (Sodium hydroxide, chrome)			009 D, R	0.0450	G
c.					
d.					
J. Additional Descriptions for Materials Listed Above a. c. h. NaOH - 0-100 Chrome - 0-10			K. Handling Codes for Wastes Listed Above a. b. c. d.		
15. Special Handling Instructions and Additional Information Billing: Excel Trans address: P.O. Box 866 Benicia, CA 94510 wear gloves/goggles when handling material Morris profile no.: 21203CR3					
16. GENERATOR'S CERTIFICATION: I hereby declare that the contents of this consignment are fully and accurately described above by proper shipping name and are classified, packed, marked, and labeled, and are in all respects in proper condition for transport by highway according to applicable international and national government regulations. If I am a large quantity generator, I certify that I have a program in place to reduce the volume and toxicity of waste generated to the degree I have determined to be economically practicable and that I have selected the practicable method of treatment, storage, or disposal currently available to me which minimizes the present and future threat to human health and the environment; OR, if I am a small quantity generator, I have made a good faith effort to minimize my waste generation and select the best waste management method that is available to me and that I can afford.					
Printed/Typed Name Steve Slade		Signature <i>Steve Slade</i>		Month Day Year 11 11 11	
17. Transporter 1 Acknowledgement of Receipt of Materials Printed/Typed Name MIKE PAULS		Signature <i>Mike Pauls</i>		Month Day Year 05 10 11	
18. Transporter 2 Acknowledgement of Receipt of Materials Printed/Typed Name		Signature		Month Day Year	
19. Discrepancy Indication Space					
20. Facility Owner or Operator Certification of receipt of hazardous materials covered by this manifest except as noted in Item 19.					
Printed/Typed Name MI		Signature <i>MI</i>		Month Day Year 11 11 51	

IN CASE OF EMERGENCY OR SPILL, CALL THE NATIONAL RESPONSE CENTER 1-800-424-8802; WITHIN CALIFORNIA, CALL 1-800-852-7550
 91716488
 GENERATOR

DO NOT WRITE BELOW THIS LINE.

5/5/92
 Green: HAULER RETAI

UNIFORM HAZARDOUS WASTE MANIFEST		1. Generator's US EPA ID No. CA 0981982663	Manifest Document No. 18101914	2. Page 1 of 1	Information in the shaded areas is not required by Federal law.
3. Generator's Name and Mailing Address Chromex 1400 Park Avenue, Emeryville CA 94608 Generator's Phone: 510 452-5900 Emergency contact: Steve Slade				A. State Manifest Document Number 9171809	
5. Transporter 1 Company Name EXCEL TRANS TR.		6. US EPA ID Number CA 0981982663	B. State Generator's ID 18101914		
7. Transporter 2 Company Name		8. US EPA ID Number	C. State Transporter's ID 912891		
9. Designated Facility Name and Site Address Envirosafe Services of Idaho, Inc. 10 1/2 miles NW of Grandview Missile Base Road Grandview, Idaho 83624		10. US EPA ID Number T 01017131314154	D. Transporter's Phone 701-745-8902		
11. US DOT Description (Including Proper Shipping Name, Hazard Class, and ID Number)		12. Containers No. Type	13. Total Quantity	14. Unit M/Wt	15. Waste Number
a. "RQ" Hazardous Waste Solid, N.O.S., ORM-E HA9189 (Chromex contaminated debris)		001 BT	001 BT		DEF-NEC-247
b.					
c.					
d.					
16. Additional Descriptions for Materials Listed Above a) 0 - 7200 ppm chrome on concrete & wood		K. Handling Codes for Materials Listed Above			
15. Special Handling Instructions and Additional Information Wear gloves/goggles when handling RSII PCN No.: 12247-001					
16. GENERATOR'S CERTIFICATION: I hereby declare that the contents of this consignment are fully and accurately described above by proper shipping name and are classified, packed, marked, and labeled, and are in all respects in proper condition for transport by highway according to applicable international and national government regulations. If I am a large quantity generator, I certify that I have a program in place to reduce the volume and toxicity of waste generated to the degree I have determined to be economically practicable and that I have selected the practicable method of treatment, storage, or disposal currently available to me which minimizes the present and future threat to human health and the environment; OR, if I am a small quantity generator, I have made a good faith effort to minimize my waste generation and select the best waste management method that is available to me and that I can afford.					
Printed/Typed Name Steve A. Clark		Signature <i>Steve A. Clark</i>		Month Day Year 05 10 19 12	
17. Transporter 1 Acknowledgement of Receipt of Materials Printed/Typed Name <i>Kathleen...</i>		Signature <i>Kathleen...</i>		Month Day Year 05 10 19 12	
18. Transporter 2 Acknowledgement of Receipt of Materials Printed/Typed Name		Signature		Month Day Year	
19. Discrepancy Indication Space					
20. Facility Owner or Operator Certification of receipt of hazardous materials covered by this manifest except as noted in Item 19.					
Printed/Typed Name Donna Pullen		Signature <i>Donna Pullen</i>		Month Day Year 05 10 19 12	

9171809
 IN CASE OF EMERGENCY OR SPILL, CALL THE NATIONAL RESPONSE CENTER 1-800-424-8802; WITHIN CALIFORNIA, CALL 1-800-852-7550

DO NOT WRITE BELOW THIS LINE.

42560

UNIFORM HAZARDOUS WASTE MANIFEST

1. Generator's US EPA ID No. CA 1D10181151713121313

2. Manifest Document No. 1, 8, 0, 2, 9

2. Page 1 of 1

Information in the shaded areas is not required by Federal law.

3. Generator's Name and Mailing Address
 Chromox
 1400 Park Avenue, Emeryville CA 94608

4. Generator's Phone (510) 652-5900 Emergency contact: Steve Slade

5. Transporter 1 Company Name
 EYCEL TRANS INC.

6. US EPA ID Number
 CADR81982663

7. Transporter 2 Company Name

8. US EPA ID Number

9. Designated Facility Name and Site Address
 EnviroSafe Services of Idaho Inc.
 10 1/2 miles NW of Grandview
 Missile Base Road
 Grandview, Idaho 83624

10. US EPA ID Number
 ID D 0 2 1 3 1 1 4 5 5 4

A. State Manifest Document Number
 9171802

B. State Generator's ID
 H A 010135101121017

C. State Transporter's ID
 209032

D. Transporter's Phone
 707-745-9901

E. State Transporter's ID

F. Transporter's Phone

G. State Facility ID

H. Facility's Phone
 (208) 384-1500

11. US DOT Description (Including Proper Shipping Name, Hazard Class, and ID Number)	12. Containers		13. Total Quantity	14. Unit Wt/Vol	15. Waste Number
	No.	Type			
a. "RQ" Hazardous Waste Solid, H.O.S., OR-B NA9189 (Chrome contaminated debris)	1	DT	17	Y	
b.					
c.					
d.					

Additional Description for Materials Listed Above
 a) 0 - 760 ppm chrome on concrete & wood

16. Special Handling Instructions and Additional Information
 Wear gloves/goggles when handling
 ERB phone # Steve A Slade
 415-855-8455
 BSII PCN No.: 12247-001

16. GENERATOR'S CERTIFICATION: I hereby declare that the contents of this consignment are fully and accurately described above by proper shipping name and are classified, packed, marked, and labeled, and are in all respects in proper condition for transport by highway according to applicable international and national government regulations. If I am a large quantity generator, I certify that I have a program in place to reduce the volume and toxicity of waste generated to the degree I have determined to be economically practicable and that I have selected the practicable method of treatment, storage, or disposal currently available to me which minimizes the present and future threat to human health and the environment; OR, if I am a small quantity generator, I have made a good faith effort to minimize my waste generation and select the best waste management method that is available to me and that I can afford.

Printed/typed Name: Steve A Slade
 Signature: [Signature]
 Month Day: 05 10 91

17. Transporter 1 Acknowledgement of Receipt of Materials
 Printed/typed Name: Christopher M Peterson
 Signature: [Signature]
 Month Day: 05 10 91

18. Transporter 2 Acknowledgement of Receipt of Materials
 Printed/typed Name: [Blank]
 Signature: [Blank]
 Month Day: [Blank]

19. Discrepancy Indication Space

20. Facility Owner or Operator Certification of receipt of hazardous materials covered by this manifest except as noted in Item 19.
 Printed/typed Name: Donna Pullen
 Signature: [Signature]
 Month Day: 05 10 91

DO NOT WRITE BELOW THIS LINE.

Green: HAULER RE

IN CASE OF EMERGENCY OR SPILL, CALL THE NATIONAL RESPONSE CENTER, 1-800-424-8802; WITHIN CALIFORNIA, CALL 1-800-852-7550
 91718029

UNIFORM HAZARDOUS WASTE MANIFEST		1. Generator's US EPA ID No. CA 19 01 57 3 2 2 3	Manifest Document No. 1 8 10 19 12	2. Page 1 of 1	Information in the shaded areas is not required by Federal law.
3. Generator's Name and Mailing Address Chromex 1400 Park Avenue, Emeryville CA 94608			A. State Manifest Document Number 91718092		
4. Generator's Phone (510) 652-5900 Emergency contact: Steve Slade			B. State Inspector ID H 521 0 0 0 1 0 0 1 0		
5. Transporter 1 Company Name EXCEL TRADS TAC		6. US EPA ID Number CA 09 81 9 0 2 6 6 3		C. State Inspector ID H 521 0 0 0 1 0 0 1 0	
7. Transporter 2 Company Name		8. USEPA ID Number		D. Transporter Phone 707-745-8907	
9. Designated Facility Name and Site Address Diviosafe Services of Idaho, Inc. 10 1/2 miles NW of Grandview Missile Base Road			10. US EPA ID Number ID 01 07 1 3 1 1 1 4 1 6 1 5 1 4		
11. Description of Material, Proper Shipping Name, Hazard Class, and ID Number			12. Containers No. Type	13. Total Quantity	14. Unit Wt/Vol
a. "RQ" Hazardous Waste Solid, N.O.S., ORM-E NA9189 (Chrome contaminated debris)			1	1	1
b.					
c.					
d.					
15. Special Handling Instructions and Additional Information Wear gloves/goggles when handling ESIE PCN No.: 12247-001			EMERGENCY CONTACT STEVE A SLADE 415-255-8433		
16. GENERATOR'S CERTIFICATION: I hereby declare that the contents of this consignment are fully and accurately described above by proper shipping name and are classified, packed, marked, and labeled, and are in all respects in proper condition for transport by highway according to applicable international and national government regulations. If I am a large quantity generator, I certify that I have a program in place to reduce the volume and toxicity of waste generated to the degree I have determined to be economically practicable and that I have selected the practicable method of treatment, storage, or disposal currently available to me which minimizes the present and future threat to human health and the environment; OR, if I am a small quantity generator, I have made a good faith effort to minimize my waste generation and select the best waste management method that is available to me and that I can afford.					
Printed/typed Name Steve H. Slade		Signature <i>Steve H. Slade</i>		Month Day Year 015 10 15 19 12	
17. Transporter 1 Acknowledgement of Receipt of Materials Printed/typed Name Bill Buchanan		Signature <i>Bill Buchanan</i>		Month Day Year 05 10 15 19 12	
18. Transporter 2 Acknowledgement of Receipt of Materials Printed/typed Name		Signature		Month Day Year	
19. Discrepancy Indication Space					
20. Facility Owner or Operator Certification of receipt of hazardous materials covered by this manifest except as noted in Item 19. Printed/typed Name SARA REESE		Signature <i>Sara Reese</i>		Month Day Year 10 17 12	

DO NOT WRITE BELOW THIS LINE.

Green: HAULER RETAIN

IN CASE OF EMERGENCY OR SPILL, CALL THE NATIONAL RESPONSE CENTER 1-800-424-8802; WITHIN CALIFORNIA, CALL 1-800-852-7550
 GENERATOR
 TRANSPORTER
 FACILITY

43240

UNIFORM HAZARDOUS WASTE MANIFEST		1. Generator US EPA ID No. CA191919115171212131113101310	Manifest Document No. 2. Page 1 of 1	Information in the shaded areas is not required by Federal law.
3. Generator Name and Mailing Address Chromex 1400 Park Avenue, Emeryville CA 94608 Generator's Phone: 510 652-5300 Emergency Contact: Steve Slade		A. State Manifest Document Number 91718031		
5. Transporter 1 Company Name Excel Trans Inc.		B. State Generator ID HAH0850126137		
7. Transporter 2 Company Name		C. State Transporter ID 204052		
9. Designated Facility Name and Site Address Envirosafe Services of Idaho, Inc. 10 1/2 miles NW of Grandview Missile Base Road Grandview, Idaho 83624		D. Transporter's Phone 707-746-8907		
11. US DOT Description (including Proper Shipping Name, Hazard Class, and ID Number) "RQ" Hazardous Waste Solid, N.O.S., ORH-8 NA9189 (Chromex contaminated debris)		E. State Facility ID		
12. Containers No. Type		F. Transporter's Phone		
13. Total Quantity 17 Y		G. State Facility ID		
14. Special Handling Instructions and Additional Information Wear gloves/goggles when handling E811 PCH No.: 12247-001 Emergency Contact: Steve A Slade 415-255-8433		H. Facility's Phone		
15. Generator's Certification: I hereby declare that the contents of this consignment are fully and accurately described above by proper shipping name and are classified, packed, marked, and labeled, and are in all respects in proper condition for transport by highway according to applicable international and national government regulations.		I. Container No.		
17. Transporter 1 Acknowledgement of Receipt of Materials Printed/typed Name: Steve A Slade Signature: <i>Steve A Slade</i> Month Day Year: 05 6 1991		J. Container Type		
18. Transporter 2 Acknowledgement of Receipt of Materials Printed/typed Name: Terry Ellingson Signature: <i>Terry Ellingson</i> Month Day Year: 05 10 1991		K. Container Qty		
19. Discrepancy Indication Space		L. Container Wt/Vol		
20. Facility Owner or Operator Certification of receipt of hazardous materials covered by this manifest except as noted in Item 19. Printed/typed Name: Donna Pullen Signature: <i>Donna Pullen</i> Month Day Year: 05 10 1991		M. Waste Number		

91718031
 GENERATOR
 TRANSPORTER
 FACILITY
 IN CASE OF EMERGENCY OR SPILL, CALL THE NATIONAL CHEMICAL Emergency Response System (NCEM) AT 1-800-424-9300 OR THE NATIONAL FIRE SERVICE CENTER AT 1-800-368-5872. WITHIN CALIFORNIA, CALL 1-800-852-7550.

DO NOT WRITE BELOW THIS LINE.

Green: HAULER RETA

UNIFORM HAZARDOUS WASTE MANIFEST		1. Generator's US EPA ID No. CA 17 19 19 11 15 17 13 12 11	Manifest Document No. 116141713	2. Page 1 of 1	Information in the shaded areas is not required by Federal law.
3. Generator's Name and Mailing Address CAROCHEN 1400 Park Avenue, Eurekaville, CA 94003			A. State Manifest Document Number 91716474		
4. Generator's Phone (510) 652-5900 Emergency contact: Steve Flade			B. State Generator's ID		
5. Transporter 1 Company Name EXCELTRANS INC.		6. US EPA ID Number CA 17 18 11 17 18 12 16 13		C. State Transporter's ID	
7. Transporter 2 Company Name		8. US EPA ID Number		D. Transporter's Phone (707) 745-3907	
9. Designated Facility Name and Site Address ENVIRONMENTAL SERVICES OF IDAHO, INC 10 1/2 miles NW of Grandview Missile Base Road		10. US EPA ID Number		E. State Transporter's ID	
Grandview, Idaho 83624		12. Containers		13. Total Quantity	
11. US DOT Description (Including Proper Shipping Name, Hazard Class, and ID Number)		No. Type		14. Unit W/Vol	
a. "RQ" Hazardous Waste Solid, N.O.S., ORM-E NA9129 (Chroms contaminated fabric)		0, 0, 1 DT		18 Y	
b.					
c.					
d.					
13. Additional Descriptions for Materials Listed Above		14. Handling Codes for Wastes Listed Above			
a) 0 - 7200 ppm chroms on concrete & wood		a. b. c. d.			
15. Special Handling Instructions and Additional Information wear gloves/goggles when handling EPI PCN No.: 12247-601					
16. GENERATOR'S CERTIFICATION: I hereby declare that the contents of this consignment are fully and accurately described above by proper shipping name and are classified, packed, marked, and labeled, and are in all respects in proper condition for transport by highway according to applicable international and national government regulations. If I am a large quantity generator, I certify that I have a program in place to reduce the volume and toxicity of waste generated to the degree I have determined to be economically practicable and that I have selected the practicable method of treatment, storage, or disposal currently available to me which minimizes the present and future threat to human health and the environment; OR, if I am a small quantity generator, I have made a good faith effort to minimize my waste generation and select the best waste management method that is available to me and that I can afford.					
Printed/typed Name		Signature		Month Day Year	
[Signature]		[Signature]		[Date]	
17. Transporter 1 Acknowledgement of Receipt of Materials		Signature		Month Day Year	
Printed/typed Name		[Signature]		05 10 6 18.	
18. Transporter 2 Acknowledgement of Receipt of Materials		Signature		Month Day Year	
Printed/typed Name		[Signature]		[Date]	
19. Discrepancy Indication Space					
20. Facility Owner or Operator Certification of receipt of hazardous materials covered by this manifest except as noted in item 19.					
Printed/typed Name		Signature		Month Day Year	
[Signature]		[Signature]		[Date]	

91716474
 IN CASE OF EMERGENCY OR SPILL, CALL THE NATIONAL RESPONSE CENTER 1-800-424-8802; WITHIN CALIFORNIA, CALL 1-800-852-7550
 GENERATOR
 TRANSPORTER
 FACILITY

DO NOT WRITE BELOW THIS LINE.

Green: HAULER RET/

1. Generator's US EPA ID No. **CA0981157131223** Manifest Document No. **118101816** 2. Page 1
 Information in the shaded areas is not required by Federal law.

3. Generator Name and Mailing Address
CHERRY LANE, EMERYVILLE CA 94608
5900 EMERYVILLE AVENUE

4. Generator's US EPA ID Number
CA0981157131223

5. US EPA ID Number
CA0981157131223

6. US EPA ID Number
CA0981157131223

7. US EPA ID Number
CA0981157131223

8. US EPA ID Number
CA0981157131223

9. US EPA ID Number
CA0981157131223

10. US EPA ID Number
CA0981157131223

11. Description of Waste, Hazard Class, and ID Number
HAZARDOUS WASTE - U.S. QM-C
CONTAMINATED DEBRIS

12. Container No. **1827** Type **DRUM**

13. Total Quantity **260.00**

14. Unit W/Vol **0.51619**

15. Signature **Ken Slade** Date **01-15-1993**

16. Signature **Ken Slade** Date **01-15-1993**

17. Signature **Ken Slade** Date **01-15-1993**

18. Signature **Ken Slade** Date **01-15-1993**

19. Signature **Ken Slade** Date **01-15-1993**

20. Facility Receipt of hazardous materials covered by this manifest except as noted in item 19.
 Signature **Ken Slade** Date **01-15-1993**

DO NOT WRITE BELOW THIS LINE.

RECEIVED 2/7 1993 43 27
 See instructions on back of page 6.

UNIFORM HAZARDOUS WASTE MANIFEST		1. Generator's LE EPA ID No. CAD981573223	Manifest Document No. 16475	2. Page 1 of 1	3. Information in the shaded areas is not required by Federal law.
3. Generator's Name and Mailing Address Chromex 1400 Park Avenue, Emeryville CA 94608			A. State Manifest Document Number 0171647		
4. Generator's Phone 610 652-5900 Emergency contact: Steve Slade			E. State Generator's ID KAR038022547		
5. Transporter 1 Company Name STANCO	6. US EPA ID Number ADP63547996		C. State Transporter's ID		
7. Transporter 2 Company Name	8. US EPA ID Number		D. State Transporter's ID		
9. Designated Facility Name and Site Address Amirosate Services of Idaho, Inc. 10 1/2 miles NW of Grandview Missile Base Road Grandview, Idaho 83624			F. State Facility's ID		
10. US EPA ID Number IDD073114654			G. State Facility's ID		
11. US DOT Description (including Proper Shipping Name, Hazard Class, and ID Number)			12. Containers	13. Total Quantity	14. Unit Wt/Vol
a. "RG" Hazardous Waste Solid, N.O.S., ORM-E NA9189 (Chromex contaminated debris)			No. Type		
				18	Y
b.					
c.					
d.					
E. Additional Descriptions for Materials Listed Above a) 0 - 7000 ppm chrome on concrete & wood			K. Handling Codes for Wastes Listed Above		
15. Special Handling Instructions and Additional Information Wear gloves/goggles when handling ESI PCN No. 12247-001					
16. GENERATOR'S CERTIFICATION: I hereby declare that the contents of this consignment are fully and accurately described above by proper shipping name and are classified, packed, marked, and labeled, and are in all respects in proper condition for transport by highway according to applicable international and national government regulations. If I am a large quantity generator, I certify that I have a program in place to reduce the volume and toxicity of waste generated to the degree I have determined to be economically practicable and that I have selected the practicable method of treatment, storage, or disposal currently available to me which minimizes the present and future threat to human health and the environment; OR, if I am a small quantity generator, I have made a good faith effort to minimize my waste generation and select the best waste management method that is available to me and that I can afford.					
Printed/Typed Name Steve A. Slade		Signature <i>Steve A. Slade</i>		Month Day Year 0510161993	
17. Transporter 1 Acknowledgement of Receipt of Materials		Signature <i>Kevin M. Brantley</i>		Month Day Year 0512161993	
18. Transporter 2 Acknowledgement of Receipt of Materials		Signature		Month Day Year	
19. Discrepancy Indication Space					
20. Facility Owner or Operator Certification of receipt of hazardous materials covered by this manifest except as noted in item 19.					
Printed/Typed Name Thomas A. ...		Signature <i>Thomas A. ...</i>		Month Day Year 0516171993	

01716475
 IN CASE OF EMERGENCY OR SPILL, CALL THE NATIONAL RESPONSE CENTER 1-800-424-9802; WITHIN CALIFORNIA, CALL 1-800-852-7850

DO NOT WRITE BELOW THIS LINE

Green HAULER RETAINS

41740

USE OF THIS FORM IS LIMITED TO THE STATES OF CALIFORNIA, ARIZONA, NEVADA, AND IDAHO. IN ALL OTHER STATES, USE OF THIS FORM IS PROHIBITED.

UNIFORM HAZARDOUS WASTE MANIFEST		1. Generator US EPA ID No. CAD9815732231	Manifest Document No. 18089	2. Page 1 of 1	Information in the shaded areas is not required by Federal law.
3. Generator's Name and Mailing Address CHROMEX 1400 Park Ave., Emeryville CA 94608			A. State Manifest Document Number 91718089		
4. Generator's Phone 510 652-5900 Emer. Contact: Steve Slade			B. State Generator's ID HAND36012617		
5. Transporter 1 Company Name STAMCO		6. US EPA ID Number CADD63547996		C. State Transporter's ID 804306	
7. Transporter 2 Company Name		8. US EPA ID Number		D. Transporter's Phone 1800-521-1030	
9. Designated Facility Name and Street Address ESSE 83654 20 1/2 miles NW of Crocker-Hale Missile Base Road			10. US EPA ID Number IDD073114654		E. State Facility's ID
11. US DOT Description (Including Proper Shipping Name, Hazard Class, and ID Number)			12. Containers No. Type	13. Total Quantity	14. Unit W/Vol
• RQ, Hazardous Waste Solid, N.O.S., ORM-E HA9189 (Urbane contaminated debris)			001 DT	0018	Y
Additional Descriptions for Materials Listed Above 200 lbs of debris and wood			15. Special Handling Instructions and Additional Information Wear gloves/goggles when handling ESSE PCN No: 12247-001 Log # 060544		
16. GENERATOR'S CERTIFICATION: I hereby declare that the contents of this consignment are fully and accurately described above by proper shipping name and are classified, packed, marked, and labeled, and are in all respects in proper condition for transport by highway according to applicable international and national government regulations. If I am a large quantity generator, I certify that I have a program in place to reduce the volume and toxicity of waste, generated to the degree I have determined to be economically practicable and that I have selected the practicable method of treatment, storage, or disposal currently available to me which minimizes the present and future threat to human health and the environment; OR, if I am a small quantity generator, I have made a good faith effort to minimize my waste generation and select the best waste management method that is available to me and that I can afford.					
Printed/typed Name Steve A Slade		Signature <i>Steve A Slade</i>		Month Day Year 051061912	
17. Transporter 1 Acknowledgement of Receipt of Materials Printed/typed Name DAN ROSE		Signature <i>Dan Rose</i>		Month Day Year 051061912	
18. Transporter 2 Acknowledgement of Receipt of Materials Printed/typed Name		Signature		Month Day Year	
19. Discrepancy Indication Space					
20. Facility Owner or Operator Certification of receipt of hazardous materials covered by this manifest except as noted in Item 19.					
Printed/typed Name Donna Pullen		Signature <i>Donna Pullen</i>		Month Day Year 0507912	

DO NOT WRITE BELOW THIS LINE.

Yellow: TSDF SENDS THIS COPY TO GENERATOR WITHIN 30 DAYS.

8022A (12/90)

UNIFORM HAZARDOUS WASTE MANIFEST		1. Generator's US EPA ID No. CA, D, 9, 8, 1, 5, 7, 3, 2, 2, 1	Manifest Document No. 1, 8, 0, 9, 0	2. Page 1 of 1	Information in the shaded areas is not required by Federal law.
3. Generator's Name and Mailing Address Chromex 1400 Park Avenue, Emeryville CA 94608			A. State Manifest Document Number 91718090		E. State Generator's ID CA 0005092117
4. Generator's Phone 510 652-5900 Emergency contact: Steve Slade			C. State Transporter's ID 713051		D. Transporter's Phone 706 351 5636
5. Transporter 1 Company Name STAMCO		6. US EPA ID Number CA 00063547996		F. State Transporter's ID 713051	
7. Transporter 2 Company Name		8. US EPA ID Number		G. State Facility's ID	
9. Designated Facility Name and Site Address Rayprose Services of Idaho, Inc. 104 miles W of Grandview Missile Base Road			10. US EPA ID Number ID, D, 0, 7, 3, 1, 1, 4, 6, 5, 4		H. Facility's Phone (208) 384-1500
Grandview Idaho 83624			12. Containers	13. Total	14. Unit
11. US DOT Description (including Proper Shipping Name, Hazard Class, and ID Number)			No.	Quantity	Wt/Vol
"RQ" Hazardous Waste Solid, H.O.S., ORM-E NA9199 (Chrome contaminated debris)			001	20	Y
Additional Descriptions for Materials Listed Above			Hazardous Code for Material Listed Above		
15. Special Handling Instructions and Additional Information Wear gloves/goggles when handling EPI PCN No.: 12247-001					
16. GENERATOR'S CERTIFICATION: I hereby declare that the contents of this consignment are fully and accurately described above by proper shipping name and are classified, packed, labeled, and labeled, and are in all respects in proper condition for transport by highway according to applicable international and national government regulations. If I am a large quantity generator, I certify that I have a plan in place to reduce the volume and toxicity of waste generated to the degree I have determined to be economically practicable and that I have selected the practicable method of treatment, storage, or disposal currently available to me which minimizes the present and future threat to human health and the environment; OR, if I am a small quantity generator, I have made a good faith effort to minimize my waste generation and select the best waste management method that is available to me and that I can afford.					
Printed/typed Name Steve A. Slade		Signature <i>Steve A. Slade</i>		Month Day Year 01510161912	
17. Transporter 1 Acknowledgement of Receipt of Materials Printed/typed Name RANDALL BENTLEY		Signature <i>Randall Bentley</i>		Month Day Year 0151016112	
18. Transporter 2 Acknowledgement of Receipt of Materials Printed/typed Name		Signature		Month Day Year	
19. Discrepancy Indication Space					
20. Facility Owner or Operator Certification of receipt of hazardous materials covered by this manifest except as noted in item 19.					
Printed/typed Name F. S. C.		Signature		Month Day Year	

DO NOT WRITE BELOW THIS LINE.

Yellow: GENERATOR RETAINS

800-832-4540
 CALIFORNIA GENERATOR
 WITHIN CALIFORNIA
 800-832-4540
 RESPONSE CENTER
 ALL INFORMATION
 IS FOR THE USE OF THE GENERATOR

UNIFORM HAZARDOUS WASTE MANIFEST		1. Generator's US EPA ID No. C,1,A,B,9,3,2,5,7,3,2,2,3	Manifest Document No. 1,4,7,3	2. Page 1 of 1	Information in the shaded areas is not required by Federal law.
3. Generator's Name and Mailing Address CHROME-X 1400 Park Avenue, Maryville CA 94000			A. State Manifest Document Number 91716473		
4. Generator's Phone (510) (652-8907) Emergency contact: Steve Slade			B. State Generator's ID H,1,A,B,9,3,2,5,7,3,2,2,3		
5. Transporter 1 Company Name EXPEL TRANS INC.		6. US EPA ID Number I,3,D,0,7,3,1,1,4,6,5,4		C. State Transporter's ID 2,5,3,3	
7. Transporter 2 Company Name		8. US EPA ID Number		D. Transporter's Phone 707-715-8701	
9. Designated Facility Name and Site Address EnviroSafe Services of Idaho, Inc 1 1/2 miles NW of Grandview Missile Base Road GRANDVIEW, Idaho 83624			10. US EPA ID Number		E. State Facility's ID
11. US DOT Description (Including Proper Shipping Name, Hazard Class, and ID Number)			12. Containers No. Type	13. Total Quantity	14. Unit Wt/Vol
a. "H" Hazardous Waste Solid, H.O.S., OR1-2 HA9189 (Chrome contaminated debris)			002CM	25	Y
b.					
c.					
d.					
15. Additional Descriptions for Materials Listed Above a) 2 - 2100 ppm chrome on concrete & wood			K. Handling Codes for Wastes Listed Above		
15. Special Handling Instructions and Additional Information Wear gloves/goggles when handling EHSII PCN No.: 12247-001			EMERGENCY CONTACT STEVE A SLADE 415-255-8433		
16. GENERATOR'S CERTIFICATION: I hereby declare that the contents of this consignment are fully and accurately described above by proper shipping name and are classified, packed, marked, and labeled, and are in all respects in proper condition for transport by highway according to applicable international and national government regulations. If I am a large quantity generator, I certify that I have a program in place to reduce the volume and toxicity of waste generated to the degree I have determined to be economically practicable and that I have selected the practicable method of treatment, storage, or disposal currently available to me which minimizes the present and future threat to human health and the environment; OR, if I am a small quantity generator, I have made a good faith effort to minimize my waste generation and select the best waste management method that is available to me and that I can afford.					
Printed/typed Name Steve Slade		Signature <i>Steve Slade</i>		Month Day Year 11 11 91	
17. Transporter 1 Acknowledgement of Receipt of Materials Printed/typed Name Steve Slade		Signature <i>Steve Slade</i>		Month Day Year 11 11 91	
18. Transporter 2 Acknowledgement of Receipt of Materials Printed/typed Name		Signature		Month Day Year	
19. Discrepancy Indication Space <i>None</i>					
20. Facility Owner or Operator Certification of receipt of hazardous materials covered by this manifest except as noted in Item 19.					
Printed/typed Name Steve Slade		Signature <i>Steve Slade</i>		Month Day Year 11 11 91	

DO NOT WRITE BELOW THIS LINE.

Green: HAULER RETAINS

IN CASE OF EMERGENCY OR SPILL, CALL THE NATIONAL RESPONSE CENTER 1-800-424-8902; WITHIN CALIFORNIA, CALL 1-800-952-7550
 TRANSPORTER
 FACILITY

1
2
3
4
5
6
7
8
9
10
11
12
13
14
15
16
17
18
19
20
21
22
23
24
25
26
27
28
29
30
31
32
33
34
35
36
37
38
39
40
41
42
43
44
45
46
47
48
49
50
51
52
53
54
55
56
57
58
59
60
61
62
63
64
65
66
67
68
69
70
71
72
73
74
75
76
77
78
79
80
81
82
83
84
85
86
87
88
89
90
91
92
93
94
95
96
97
98
99
100

APPENDIX D

Non-hazardous Disposal Receipts

OAKLAND SCAVENGER CONTAINER DIV
 WASTE MANAGEMENT COMPANY
 777 OAKPORT ST #350
 OAKLAND, CA. 94621

ACCOUNT NUMBER 351545	ROUTE 70-0
DATE 5/01/92	

THE CHARLES LOWE CO
 P O BOX 8445
 EMERYVILLE, CA 94608

(10)430-8194

SERVICE AT:
 1400 PARK AV
 EMERYVILLE, CA 94608

BILL NUMBER	DATE	DESCRIPTION	AMOUNT
		REMINDER-PAST DUE	
		PREVIOUS BALANCE	868.95
	4/13/92	PAYMENT-THANK YOU	289.65C
	4/13/92	PAYMENT-THANK YOU	289.65C
1454359	5/01/92	APR 1992	275.75
1454359	5/01/92	LOCAL AND STATE MANDATED FEES	13.90

PAYMENT COPY

INVOICE RECEIVED

MAY 14 1992

Approved DKS Date 05-14-92

P.O. No. _____

TOTAL DUE \$ 579.30

JUST A FRIENDLY REMINDER THAT AS OF 04/24/92, WE HAD NOT RECEIVED YOUR PAYMENT
 IF YOU HAVE ALREADY MAILED YOUR PAYMENT, KINDLY DISREGARD THIS MESSAGE. WE WILL
 NOT BE HELD RESPONSIBLE FOR ARTICLES PLACED IN OR NEAR THE RECEPTACLES.

TRUOMA

DELIVERY RECEIPT

DATE 9/5/92 1992 NO. 0577

FROM Major Salvage Co.

TO Charles Lowe Co. YOUR ORDER

ADDRESS 1400 Park Ave CITY Emerville

PACKAGES	RECEIVED IN APPARENT GOOD ORDER	WEIGHT
<u>44</u>		
<u>20 yds of Roofing Material removed</u>		
<u>175⁰⁰ Plus Dump Fees</u>		

RECEIVED BY <u>Don Ferreira</u> 6L615	TOTAL PACKAGES	TOTAL WEIGHT
	C. O. D. CHARGE	DELIVERY CHARGE



APPENDIX E
Field Test Results

17 FRIDAY MAY

1991
13/22

1991
13/22

ARMED FORCES DAY

MAY

Chromate field test
on Copper base bars

tests after steaming

#	PH	Oxidizer	Chromate
#1	7	NA	5
#2	7	NA	4
#3	7	NA	4
#4	7	NA	5
#5	7	NA	3

Before steam steaming
copper base bars
over 30 PPM Chromate
P.H. was 3-6 oxidizer NA

18 TUESDAY JUNE

1991
169/196

1991
170/196

JUNE WEDNESDAY 19

PRESSURE WASHED TANK SECTIONS
SAMPLE, (FIELD TESTS)

#1 Chromate 37PPM

PH ?

Oxidizer NA

#2 Chromate 07PPM

PH ?

Oxidizer NA

#3 Chromate 57PPM

PH ?

Oxidizer NA

#4 Chromate 57PPM

PH ?

Oxidizer NA

#5 Chromate 37PPM

PH ?

Oxidizer NA

Drager air sampling
in area of Remount
removal from pit

0.1 mg.

Pressure washed Tank
section field tests

Sample #1 Chromate 57PPM

PH ?

Oxidizer NA

#2 Chromate 37PPM

PH ?

Oxidizer NA

#3 Chromate 37PPM

PH ?

Oxidizer NA

#4 Chromate 37PPM

PH ?

Oxidizer NA

Drager air sampling
in area of Pressure
washing of tank
sections 0 mg.

Lead plating tank rods
Field Tests

#1 Chromate 60 ppm oxidizer NA
PH 7

#2 Chromate 60 ppm oxidizer NA
PH 7

#3 Chromate 30 ppm oxidizer NA
PH 7

#4 Chromate 60 ppm oxidizer NA
PH 7

#5 Chromate 60 ppm oxidizer NA
PH 7

scrapped lead rods in
dry waste bin this day

chromate
Elec. pipe ppm 30-100 ppm

Field tested oxidizer NA PH 7
loaded into dry waste bin
this day

Copper ^{plate} bars scrap
metal 3 ppm oxidizer NA
PH 7

24 MONDAY JUNE

1991
175/180

1991
178/189

JUNE TUESDAY 25

Scrap metal loaded into
bins

Drager air sample
from pressure washing
area 0.1 mg

Chromate field tests
tank stands

#1 Chromate traces
PH 7
oxidizer NA

#2 Chromate trace
PH 7
oxidizer NA

#3 Chromate 3 PPM
PH 7
oxidizer NA

#4 Chromate 5 PPM
PH 7
oxidizer NA

Drager air sample
from cement removal
area 0.1 mg

Four field tests
on wood loaded
in dog waste bin

Drag

#1 Chromate
100+ PPM
PH 7 Oxidizer NR

#2 Chromate 100+ PPM
PH 8 Oxidizer NR

#3 Chromate 60+ PPM
PH 7 Oxidizer

#4 Chromate 100+ PPM
PH 7 Oxidizer
field test of pipe
& ducting labeled

#1 Chromate 100+ PPM
PH 7 Oxidizer NR

#2 Chromate 100+ PPM
PH 7 Oxidizer NR

#3 Chromate 100+ PPM
PH 7 Oxidizer NR

28 FEB. ERI 1992

20/156

210/155

MARCH 3 TUE 1992

LOADED ROOF DECKING
INTO CLASS 3 BIN /
AROUND 35 SHEETS

CHROMATE FIELD TESTS

#1 CHROMATE 0
OXIDIZER NA
PH 7

#2 CHROMATE 0
OXIDIZER NA
PH 7

#3 CHROMATE 3 PPM
OX NA
PH 7

#4 CHROMATE 0
OX NA
PH 7

#5 CHROMATE 0
OX NA
PH 7

#6 CHROMATE 0
OX NA
PH 7

LOADED ROOF DECKING
INTO CLASS 3 BIN / WITH
ROOFING PAPER & GRAVEL
AROUND 40 SHEETS

CHROMATE FIELD TESTS

#1 CHROMATE 0
OXIDIZER NA
PH 7

#2 CHROMATE 3
OXIDIZER NA
PH 8

#3 CHROMATE 3
OXIDIZER NA
PH 7

#4 CHROMATE 0
OXIDIZER NA
PH 7

#5 CHROMATE 0
OXIDIZER NA
PH 7

#6 CHROMATE 0
OXIDIZER NA
PH 7

MARCH 4 WED 1992

1991
212/163

JULY WEDNESDAY 31

LOADED ROOF DECKING INTO
CLASS 3 BIN WITH ROOFING
PAPER + GRAVEL AROUND
40 SHEETS OF DECKING
CHROMATE FIELD TEST

#1 CHROMATE 3
OXIDIZER NA
PH 7

#2 CHROMATE 3
OXIDIZER NA
PH 7

#3 CHROMATE 0
OXIDIZER NA
PH 7

#4 CHROMATE 3
OXIDIZER NA
PH 7

#5 CHROMATE 0
OXIDIZER NA
PH 7

#6 CHROMATE 0
OXIDIZER NA
PH 7

#7 CHROMATE 0
OXIDIZER NA
PH 7

#8 CHROMATE 3
OXIDIZER NA
PH 7



APPENDIX F

Analysis of Wood Siding



ERICKSON
3033 Richmond Parkway, Suite 300, Richmond, CA 94806
(415) 262-1500 • FAX (415) 758-8643

ERICKSON Analytical

Certificate of Analysis

**Toxicity Characteristic Leaching Procedure
Chromium EPA Method # 6010**

Erickson W.O. : 80500
Matrix : Wood/ Debris
Date Sampled : 05/21/91
Project Number: N/A
Date Prepared : 05/21/91
Date Analyzed : 05/22/91
Date Reported : 05/24/91
Instrument I.D. : ICP1

Element	EPA Method#	Reporting Limit (mg/L)	Sample ID # Siding
-1-			
Chromium (Cr)	6010	1.00	1740

Sample and Blank Extracted by EPA Method 1311 (TCLP).

Analyst

Sara Dillon



APPENDIX G

Analysis of Brick Wall and Windows



P.O.# 92-10530
CHAIN OF CUSTODY RECORD

PROJECT NAME
CHROMEX

ANALYSES
REQ'D
CHROMIUM
COPPER
TCLP PCB/CML

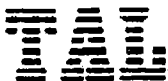
COLLECTORS (Signature)

SAMPLE	DATE	TIME	COMP	GRAB	SAMPLE LOCATION	MEDIA	CHROMIUM	COPPER	TCLP PCB/CML	DETECTION LIMIT	TURN-AROUND TIME	SUSPECTED CONTAMINANT
1ST			✓		GLASS RINSE		X	X			Req. TAT.	
2ST			✓		GLASS RINSE		X	X				
3ST			✓		BRICK WALL				X			

Relinquished by: (Signature)	Date / Time	Received by: (Signature)	Relinquished by: (Signature)	Date / Time	Received by: (Signature)
<i>Chuck Kelly</i>	9-10-92				
Relinquished by: (Signature)	Date / Time	Received by: (Signature)	Relinquished by: (Signature)	Date / Time	Received by: (Signature)
Relinquished by: (Signature)	Date / Time	Received for Laboratory by: (Signature)	Date / Time	Remarks	
		<i>John Noan</i>	9/18/92 2:51 PM	Req. TAT	

Trace Analysis Laboratory, Inc.
3423 Investment Boulevard, #8 • Hayward, California 94545

Telephone (510) 783-6960
Facsimile (510) 783-1512



September 24, 1992

Ms. Mary Boyd
Excel Trans, Inc.
P.O. Box 866
Benicia, California 94510-0866

Dear Ms. Boyd:

Trace Analysis Laboratory received one solid sample and two water samples on September 10, 1992 for your project, Chromex (our custody log number 2475).

These samples were analyzed according to your chain of custody. Our analytical report and the completed chain of custody form are enclosed for your review.

Trace Analysis Laboratory is certified under the California Environmental Laboratory Accreditation Program. Our certification number is 1199.

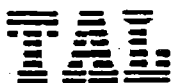
If you should have any questions or require additional information, please call me.

Sincerely yours,

A handwritten signature in black ink, appearing to read 'Jennifer Rekol', written over the typed name.

Jennifer Rekol
Project Specialist

Enclosures



LOG NUMBER: 2475
 DATE SAMPLED: 09/10/92
 DATE RECEIVED: 09/10/92
 DATE EXTRACTED: 09/15/92 and 09/17/92
 DATE ANALYZED: 09/17/92
 DATE REPORTED: 09/24/92

CUSTOMER: Excel Trans, Inc.
 REQUESTER: Mary Boyd
 PROJECT: Chromex

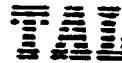
Toxicity Characteristic
 Leaching Procedure

Sample Type: Extract of Solid

Method and Constituent:	Units	East and West		Method Blank		OC Summary	
		Concen- tration	Reporting Limit	Concen- tration	Reporting Limit	% Recovery	% RPD
EPA Method 7190:							
Chromium	ug/l	1,800	50	ND	50	105	*
Chromium Recovery Correct	ug/l	1,700					
EPA Method 7210:							
Copper	ug/l	ND	200	ND	200	102	0.0

Concentrations reported as ND were not detected at or above the reporting limit.

The RPD is not reportable since the sample prepared in duplicate was not detectable.



LOG NUMBER: 2475
 DATE SAMPLED: 09/10/92
 DATE RECEIVED: 09/10/92
 DATE EXTRACTED: 09/16/92
 DATE ANALYZED: 09/17/92
 DATE REPORTED: 09/24/92
 PAGE: Two


Sample Type: Water

Method and Constituent:	Units	East		West		Method Blank	
		Concentration	Reporting Limit	Concentration	Reporting Limit	Concentration	Reporting Limit
EPA Method 7190: Chromium	ug/l	500	50	160	50	ND	50
EPA Method 7210: Copper	ug/l	ND	200	ND	200	ND	200

Method and Constituent:	Units	QC Summary	
		% Recovery	% RPD
EPA Method 7190: Chromium	ug/l	104	*
EPA Method 7210: Copper	ug/l	107	*

Concentrations reported as ND were not detected at or above the reporting limit.

* The RPD is not reportable since the sample prepared in duplicate was not detectable.


 Louis W. DuPuis
 Quality Assurance/Quality Control Manager



2

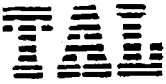
APPENDIX H

Analysis of Concrete Vaults

Trace Analysis Laboratory, Inc.

3423 Investment Boulevard, #8 • Hayward, California 94545

Telephone (510) 783-6960
Facsimile (510) 783-1512



April 7, 1992

Mr. Patrick Kelly
Excel Trans, Inc.
P.O. Box 866
Benicia, California 94510-0866

Dear Mr. Kelly:

Trace Analysis Laboratory received one solid sample on April 3, 1992 for your Project No. 022011, Charles Lowe/Chromex (our custody log number 1965).

This sample was analyzed for Chromium. Our analytical report and the completed chain of custody form are enclosed for your review.

Trace Analysis Laboratory is certified under the California Environmental Laboratory Accreditation Program. Our certification number is 1199.

If you should have any questions or require additional information, please call me.

Sincerely yours,

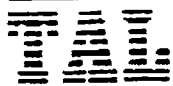
A handwritten signature in cursive script that reads "Jennifer Pekol". The signature is written in dark ink and is positioned above the typed name and title.

Jennifer Pekol
Project Specialist

Enclosures

Trace Analysis Laboratory, Inc.
 3423 Investment Boulevard, #8 • Hayward, California 94545

Telephone (510) 783-6960
 Facsimile (510) 783-1512



LOG NUMBER: 1965
 DATE SAMPLED: 04/03/92
 DATE RECEIVED: 04/03/92
 DATE EXTRACTED: 04/06/92
 DATE ANALYZED: 04/07/92
 DATE REPORTED: 04/07/92

CUSTOMER: Excel Trans, Inc.
 REQUESTER: Patrick Kelly
 PROJECT: No. 022011, Charles Lowe/Chromex

Sample Type: Solid

Method and Constituent:	022011 #1		Method Blank		QC Summary	
	Units	Concentration Reporting Limit	Concentration	Reporting Limit	% Recovery	% RPD
EPA Method 7190: Chromium	ug/kg	7,200,000 1,200	ND	1,200	82	0.8

Concentrations reported as ND were not detected at or above the reporting limit.

Louis W. DuPuis
 Louis W. DuPuis
 Quality Assurance/Quality Control Manager