

PARKING LOT

100'

SHADED AREA IS CHROME SHOP

S4 S3

S1

S2

30'

S1-S2-S3-S4
INDICATE CHROME TANKS

351'

240'

HOF ON SHEET

GENERAL MANUFACTURING AREA

HOLDEN STREET

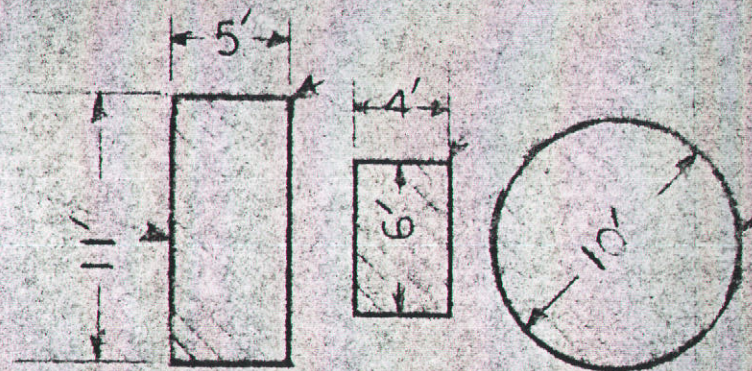
251' 3"

PARK AVENUE

EMERGENCY CONTAINMENT TANK
6' X 4' X 5' HIGH

EMERGENCY CONTAINMENT TANK 11' X 5' X 5' HIGH

MACHINING TOLERANCES:
(Unless otherwise specified)
ANGULAR ± 1°
FINISHES 125/



EMERGENCY CONTAINMENT TANK 10' DIA X 8' 6" HIGH

EXHAUST FAN AND MOTOR

A3 DUST SCRUBBER

S5 SANDBLAST ROOM
(SEE DETAIL - SB)

A2 - EXHAUST AIR SCRUBBER

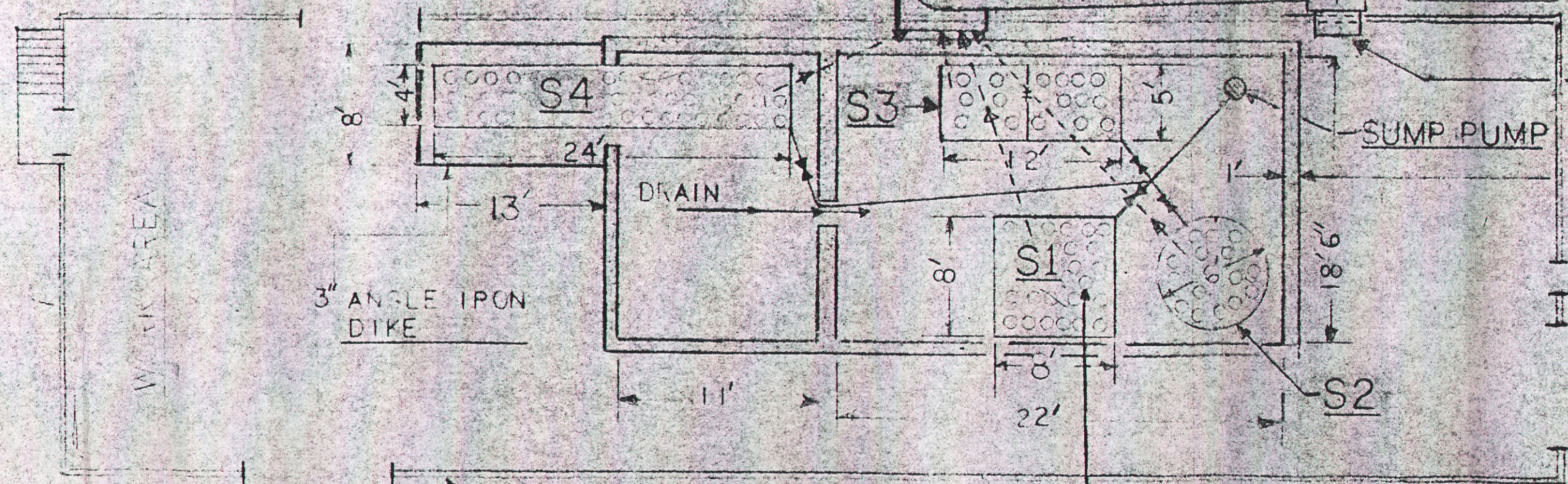
EXHAUST DUCT

EXHAUST FAN AND MOTOR

P1 EMISSION POINT

SUMP PUMP

CONCRETE SUMP
18' 6" X 22' X 12' 6"

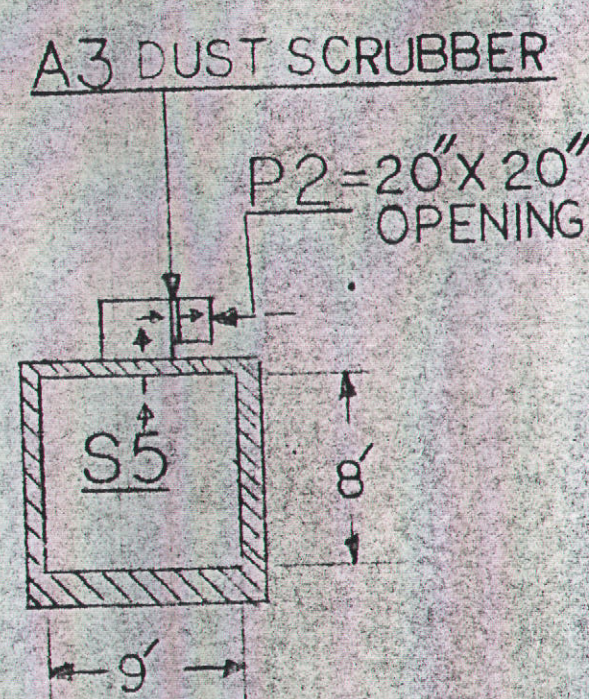
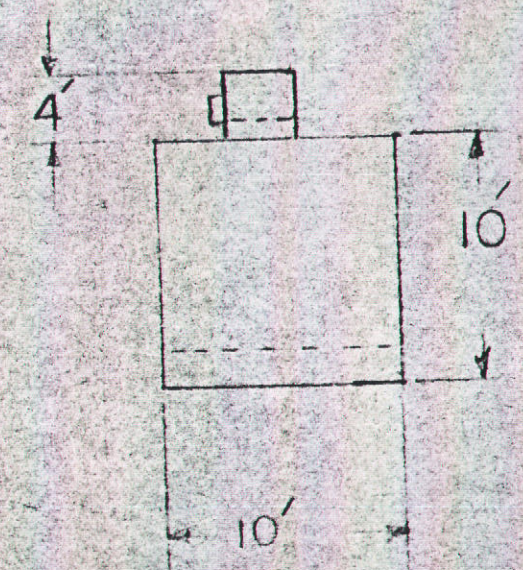
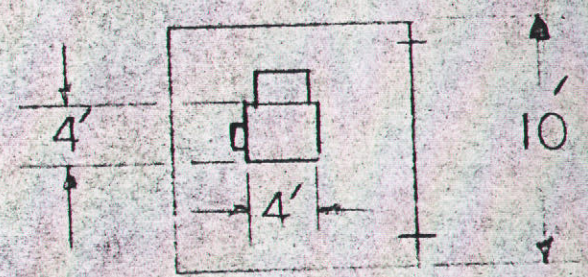


WORK AREA

3" ANGLE IRON DIKE

ENLARGED VIEW OF CHROME SHOP

A1 INDICATE FLOATING FUME SUPPRESSORS



DETAIL SB

The Charles Lowe Company
EMERYVILLE, CALIFORNIA 94632 (U.S.A.)

CHROMEX
EXHAUST FLOW DETAIL

DRAWN BY: <i>J.R.W.</i>	MATERIAL: PLAN DWG.
APPROVED BY:	HEAT TREATMENT:
SCALE:	DATE: 4-1-88
	DRAWING NUMBER:

FRANCES:
1/84
1/84
125