

RECEIVED

2:20 pm, Dec 13, 2011

Alameda County
Environmental Health



December 12, 2011
Cardno ERI 2780C.L01

Mr. John Jay
MacArthur Boulevard Associates
10700 MacArthur Boulevard, Suite 200
Oakland, California 94605

Cardno ERI
License A/C10-611383

601 N McDowell Boulevard
Petaluma, CA 94954
USA

SUBJECT **Notification of On-Site Assessment Activities**
Former Exxon Service Station 74121
10605 Foothill Boulevard, California

Phone 707 766 2000
Toll-free 800 382 9105
Fax 707 789 9414
www.cardno.com

Mr. Jay:

www.cardnoeri.com

At the request of ExxonMobil Environmental Services (EMES), on behalf of Exxon Mobil Corporation, Cardno ERI is notifying you of the upcoming installation of soil vapor wells VW3R, VW4R, VW11R, and VW12R at the subject site on December 19, 2011. This work is expected to take approximately one day to complete. The work is being performed at the direction of the Alameda County Health Care Services, Environmental Health Services. The proposed locations of the wells are shown on the attached Generalized Site Plan.

Once the wells are completed, the driller will refinish the surface to match the surrounding area. Soil waste generated during field activities will be stored on site in 55-gallon drums pending removal from the site and transport to an EMES-approved disposal facility.

Cardno ERI will make every attempt to minimize disruptions. Cardno ERI will employ various pedestrian and vehicular traffic control measures (i.e., cones, delineators, and caution tape) to limit access to the work zones as necessary. These traffic control measures are designed to ensure the safety of our personnel and the general public.

Thank you for your cooperation. Please contact Ms. Paula Sime, Cardno ERI's project manager for this site, at paula.sime@cardno.com or at (707) 766-2000 with questions regarding the scheduled work.

Sincerely,

SCANNED
IMAGE

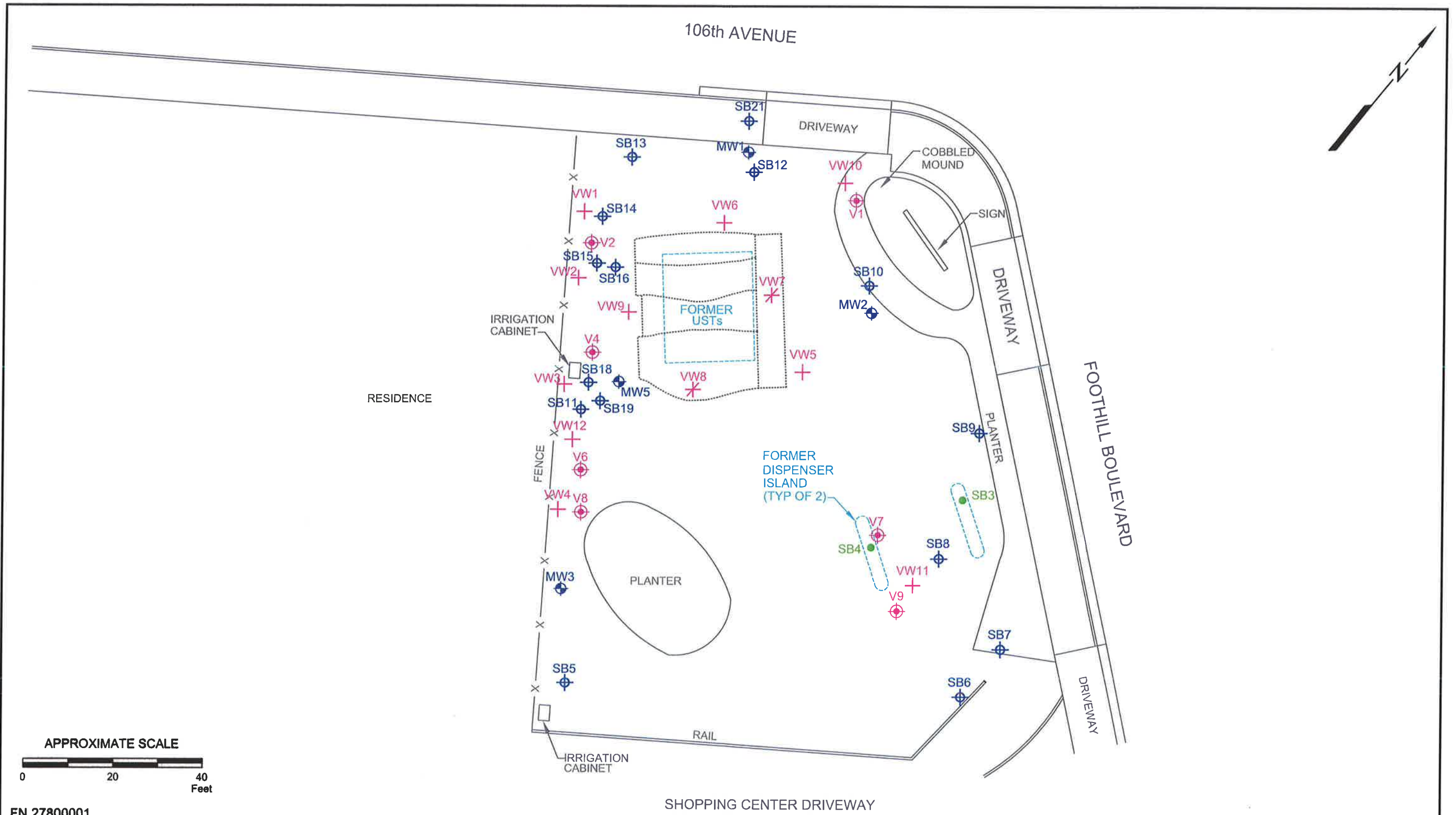
Alex G. Snyder
Staff Geologist
for Cardno ERI
Direct Line 707 766 2000
Email: alex.snyder@cardno.com

SCANNED
IMAGE

Paula Sime
Senior Project Manager
for Cardno ERI
Direct Line 707 766 2000
Email: paula.sime@cardno.com

Enclosure: Generalized Site Plan

cc: Ms. Jennifer C. Sedlachek, ExxonMobil Environmental Services Company
 Mr. Leroy Griffin, Oakland Fire Department, 250 Frank H. Ogawa Plaza, Ste. 3341, Oakland, CA 94612
 Mr. Peter McIntyre, AEI Consultants, 2500 Camino Diablo, Suite 200, Walnut Creek, CA 94597
 Ms. Donna Drogos, Alameda County Health Care Services, Environmental Health Services
 Mr. Jerry Wickham, Alameda County Health Care Services, Environmental Health Services



FN 27800001



GENERALIZED SITE PLAN
 FORMER EXXON SERVICE STATION 74121
 10605 Foothill Boulevard
 Oakland, California

EXPLANATION

- MW5 Groundwater Monitoring Well
- VW12 Soil Vapor Sampling Well

- SB21 Direct Push Boring
- SB4 Soil Boring
- V9 Soil Vapor Sampling Well

- VW8 Destroyed Soil Vapor Sampling Well

PROJECT NO.
 2780
 PLATE
 2