

ASSESSOR'S MAP 42

Map No.2 of Salt Marsh and Tide Lands (Case1 Dr.6-26)

Code Area Nos.17-001 17-032
21-001

Sale Map No.10 of Salt Marsh and Tide Lands (Bk.17-Pg.30)

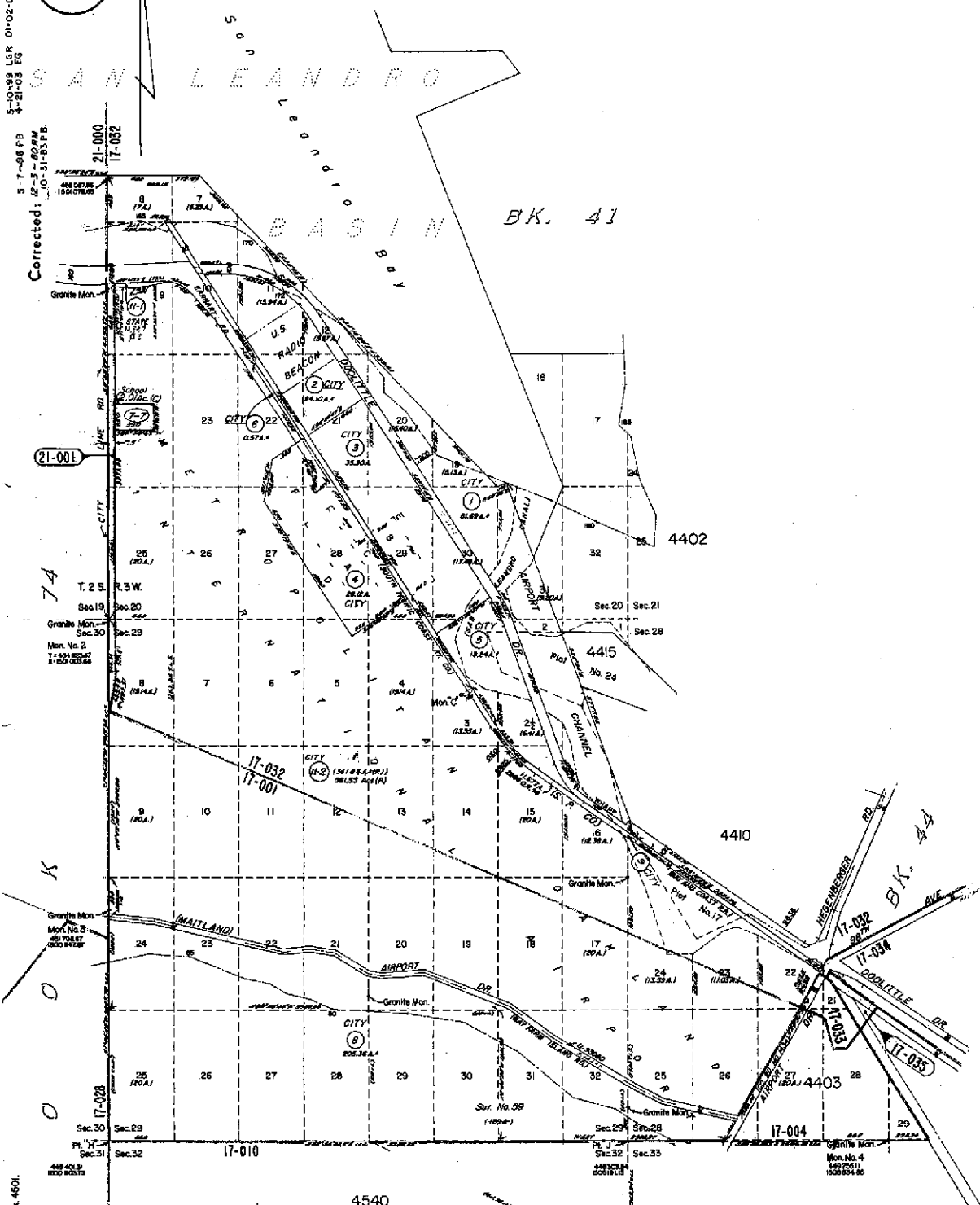
Map of the Lands in Partition

(Wm. P. Toler et al vs Jose C. Peralta Adm. et al -Case No.5408) (Bk.207 deeds-Pg.349)(Case3-13-5A)

Scale: 1" = 800'

4404

5-7-08 PB
3-21-03 EG
Corrected: 10-31-03 FB



Fmly Pln. Bk. 4501.

REF: Oakland Sewer Sh. (1946 S)
Areas Acquired by U.S. Navy (Case 2-28-43)
Western Div. Div. No M-264 (1944 O.R. 103)
Coordinate Map (Sec. 40-Ao. 30)

R/S ARB. NO. 40 (R.S. BK. 1 Pg. 32)

R/S 1394 22/64; R/S 1546 22/71
R/S 1798 27/42

HIGHWAY 219, NO.
FOR 1 & 2

HPN
11