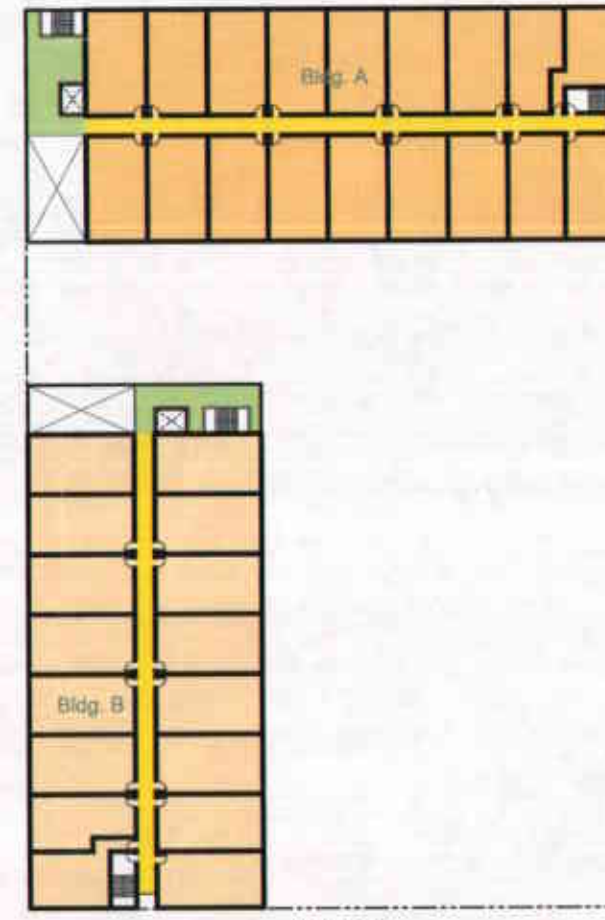


20699
R02568

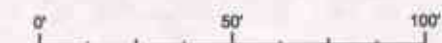


| Bldg. A | | Level | Units | Saleable Sq. ft. | Lobby (sq. ft.) | Circulation(sq. ft.) | Support Space | Total sq. ft. |
|---------------|--|-------|------------|------------------|-----------------|-----------------------|---------------|----------------|
| | | 1 | 17 | 20,090 | 1,318 | 1,539.50 | 405 | 23,353 |
| | | 2 | 18 | 12,508 | 598 | 1,413.50 | 0 | 14,520 |
| | | 3 | 18 | 16,875 | 598 | 1,413.50 | 0 | 18,887 |
| Subtotals | | | 53 | 49,473 | 2,514 | 4,366.50 | 405 | 56,760 |
| Bldg. B | | Level | Units | Saleable Sq. ft. | Lobby (sq. ft.) | Circulation(sq. ft.) | Support Space | Total sq. ft. |
| | | 1 | 15 | 17,811 | 1,048 | 1,414.00 | 405 | 20,678 |
| | | 2 | 16 | 11,260 | 454 | 1,288.00 | 0 | 13,002 |
| | | 3 | 16 | 15,205 | 454 | 1,288.00 | 0 | 16,947 |
| Subtotals | | | 47 | 44,276 | 1,956 | 3,990.00 | 405 | 50,627 |
| Totals | | | 100 | 93,749 | 4,470 | 8,356.50 | 810 | 107,387 |

Parking 103 spaces

**PRELIMINARY
NOT FOR
CONSTRUCTION**

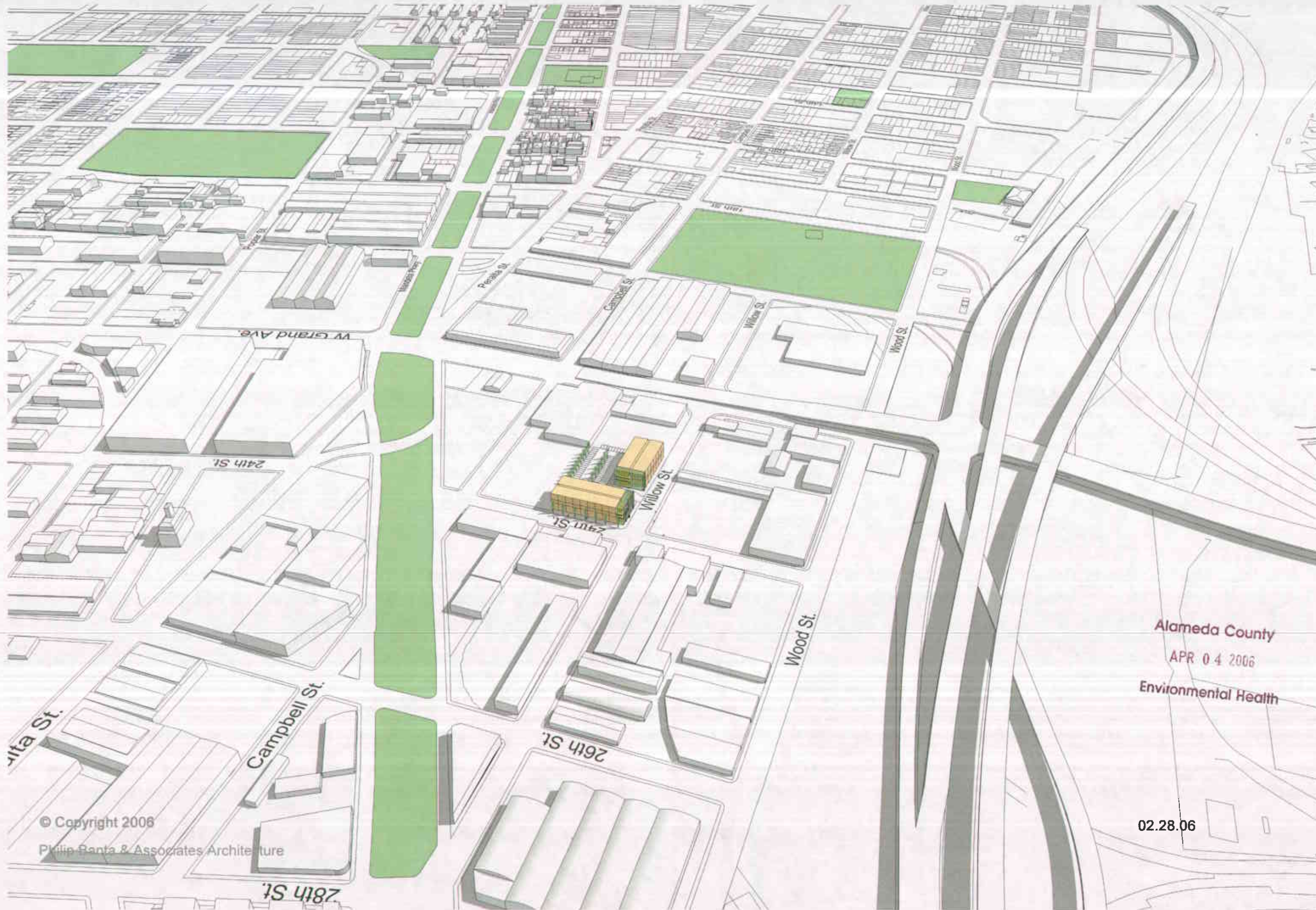
Site Plan



February 28 2006
24th &
Willow
Oakland, CA



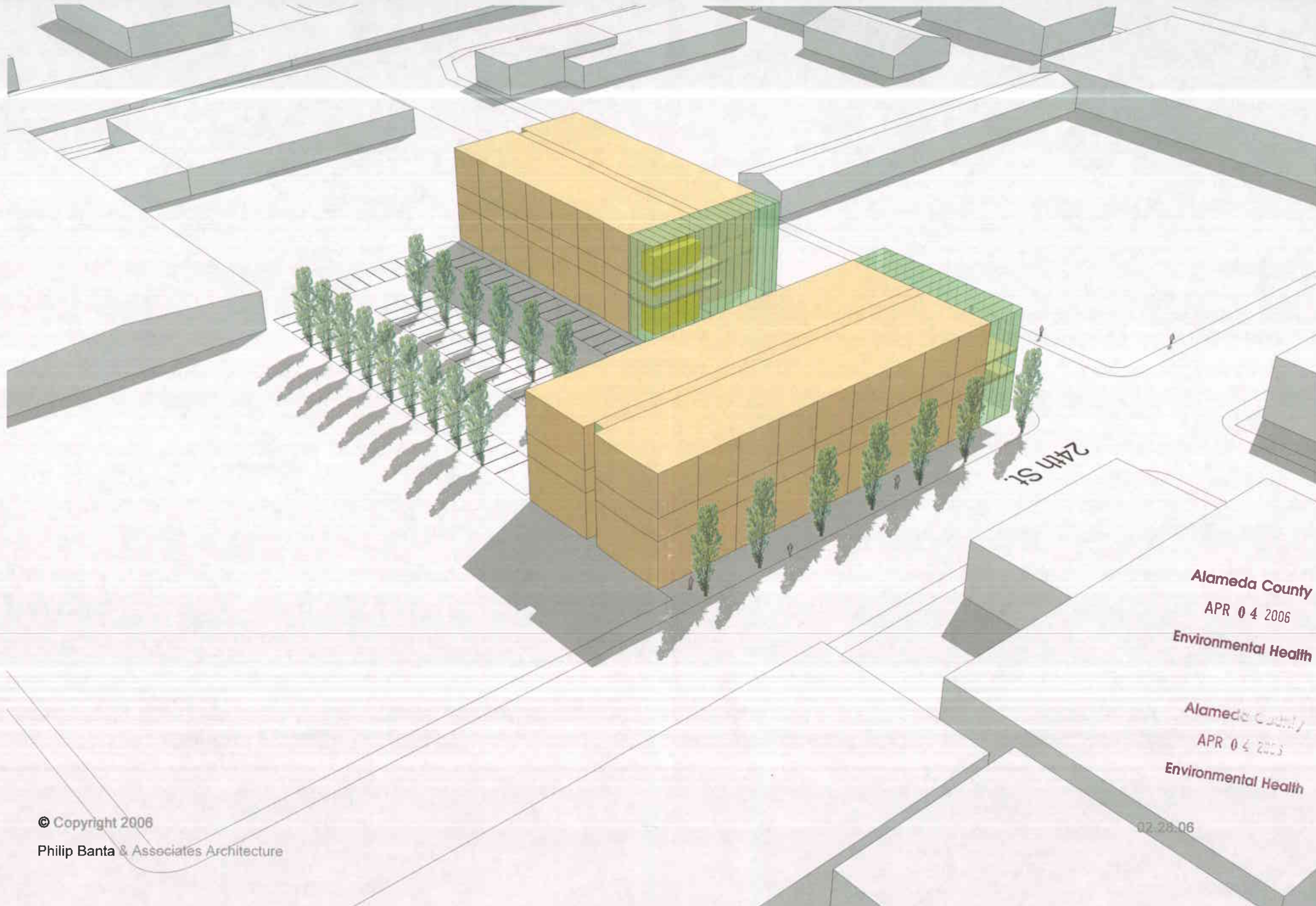
Alameda County
APR 04 2006
Environmental Health



Alameda County
APR 04 2006
Environmental Health

© Copyright 2006
Philip Banta & Associates Architecture

02.28.06

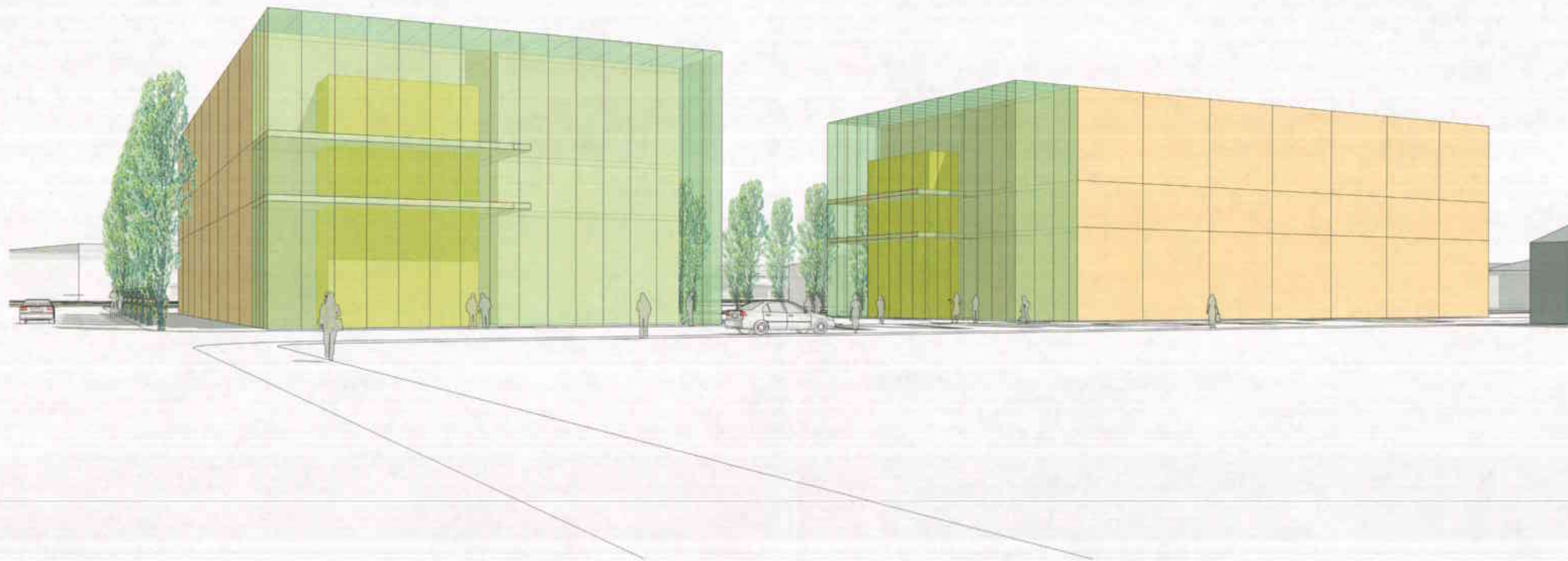


Alameda County
APR 04 2006
Environmental Health

Alameda County
APR 04 2006
Environmental Health

02-28-06

© Copyright 2006
Philip Banta & Associates Architecture

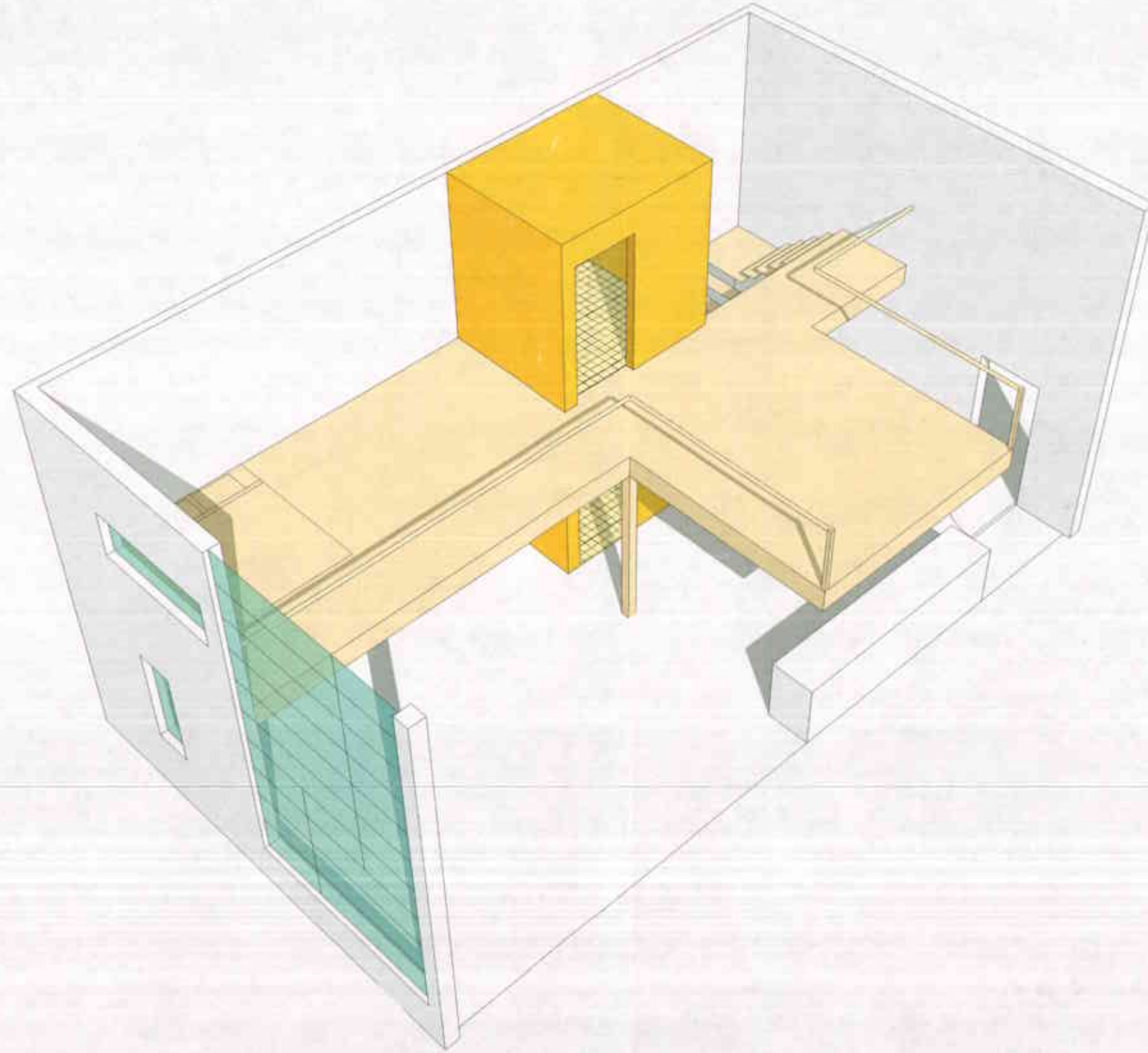


Alameda County
APR 04 2003
Environmental Health

© Copyright 2006

Philip Banta & Associates Architecture

03.01.06

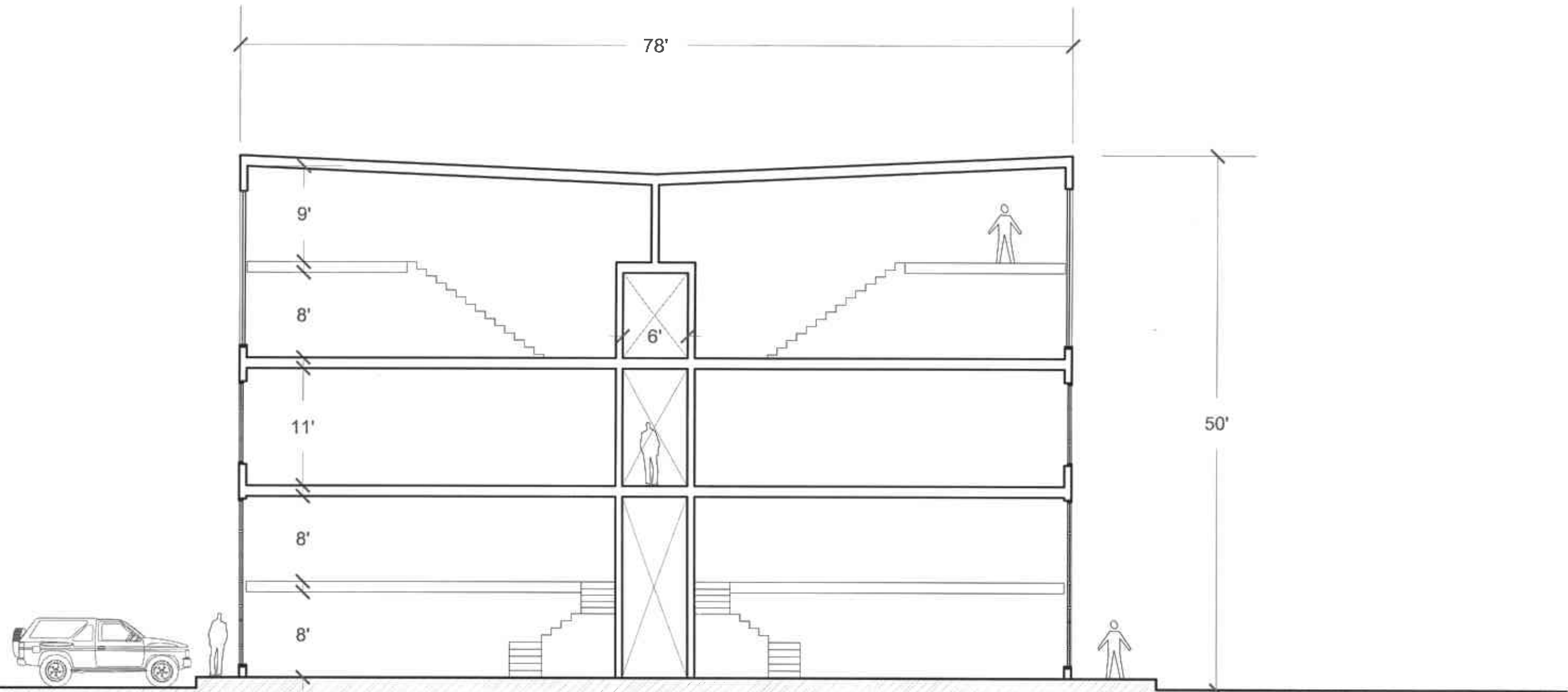


Alameda County
APR 04 2006
Environmental Health

© Copyright 2006

Philip Banta & Associates Architecture

February 28, 2006

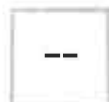
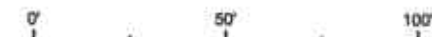


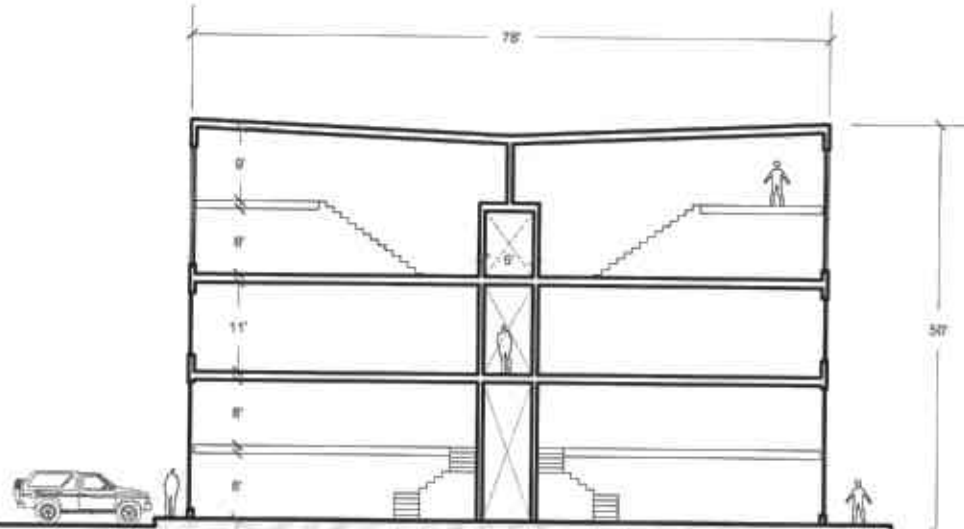
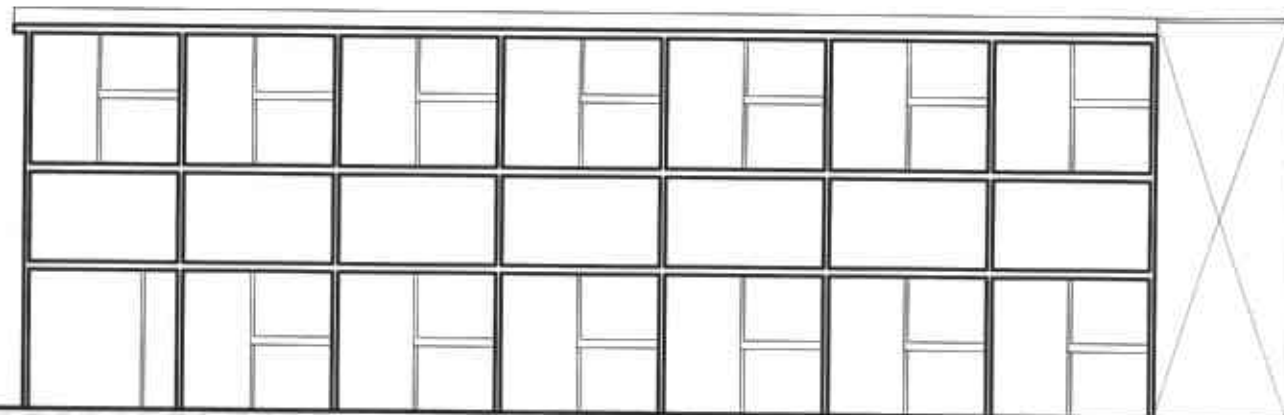
1685 - 24th St.

Alameda County
 APR 04 2003
 Environmental Health

**PRELIMINARY
 NOT FOR
 CONSTRUCTION**

Typical Bldg Section





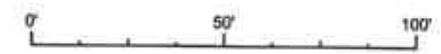
1685 - 24th St

Alameda County
 APR 04 2006
 Environmental Health

©Copyright 2006
 PHILIP BANTA & ASSOCIATES
 6050 HOLLIS, EMERYVILLE 510-654-3255

**PRELIMINARY
 NOT FOR
 CONSTRUCTION**

Site Section



February 28, 2006
 24th &
 Willow
 Oakland, CA

