


**LOWNEY ASSOCIATES**  
 Environmental / Geotechnical / Engineering Services

# Fax Transmittal

- |   |  |   |  |
|---|--|---|--|
| <input type="checkbox"/> <b>Mountain View Office</b><br>405 Clyde Avenue<br>Mountain View, CA 94043<br>Tel: 650.967.2365<br>Fax: 650.967.2785 | <input checked="" type="checkbox"/> <b>Oakland Office</b><br>167 Filbert Street<br>Oakland, CA 94607<br>Tel: 510.267.1970<br>Fax: 510.267.1972 | <input type="checkbox"/> <b>Fullerton Office</b><br>251 E. Imperial Hwy., #470<br>Fullerton, CA 92835<br>Tel: 714.441-3090<br>Fax: 714.441-3091 | <input type="checkbox"/> <b>San Ramon Office</b><br>2258 Camino Ramon<br>San Ramon, CA 94583<br>Tel: 925.275.2550<br>Fax: 925.275.2555 |
|---|--|---|--|

---

<b>To:</b> Alameda County Dept. of Environmental Health	<b>From:</b> Mark Arniola
<b>Attn:</b> Eva Chu	<b>Date:</b> October 18, 2002
<b>Fax:</b> (510) 337-9335	<b>Pages:</b> 2 (Including Cover)
<b>CC:</b>	<b>Project:</b> 1300 Powell Street
	<b>Job #:</b> 1424-9C

Please notify us if you received this fax in error by calling the office indicated above.

---

**Remarks:**     Urgent     For your review     Reply ASAP     Please comment

Eva,

The attached figure shows the completed excavation (pending the results of the last confirmation samples) for everything except the area under the building. I have utilized the information from our test pit data as much as possible to reduce the number of sidewall confirmation samples. Please review the sample locations shown and let me know if this is sufficient. We have samples on hold for the locations with the open circles, if you think these need to be analyzed.

Sincerely,

**Lowney Associates**

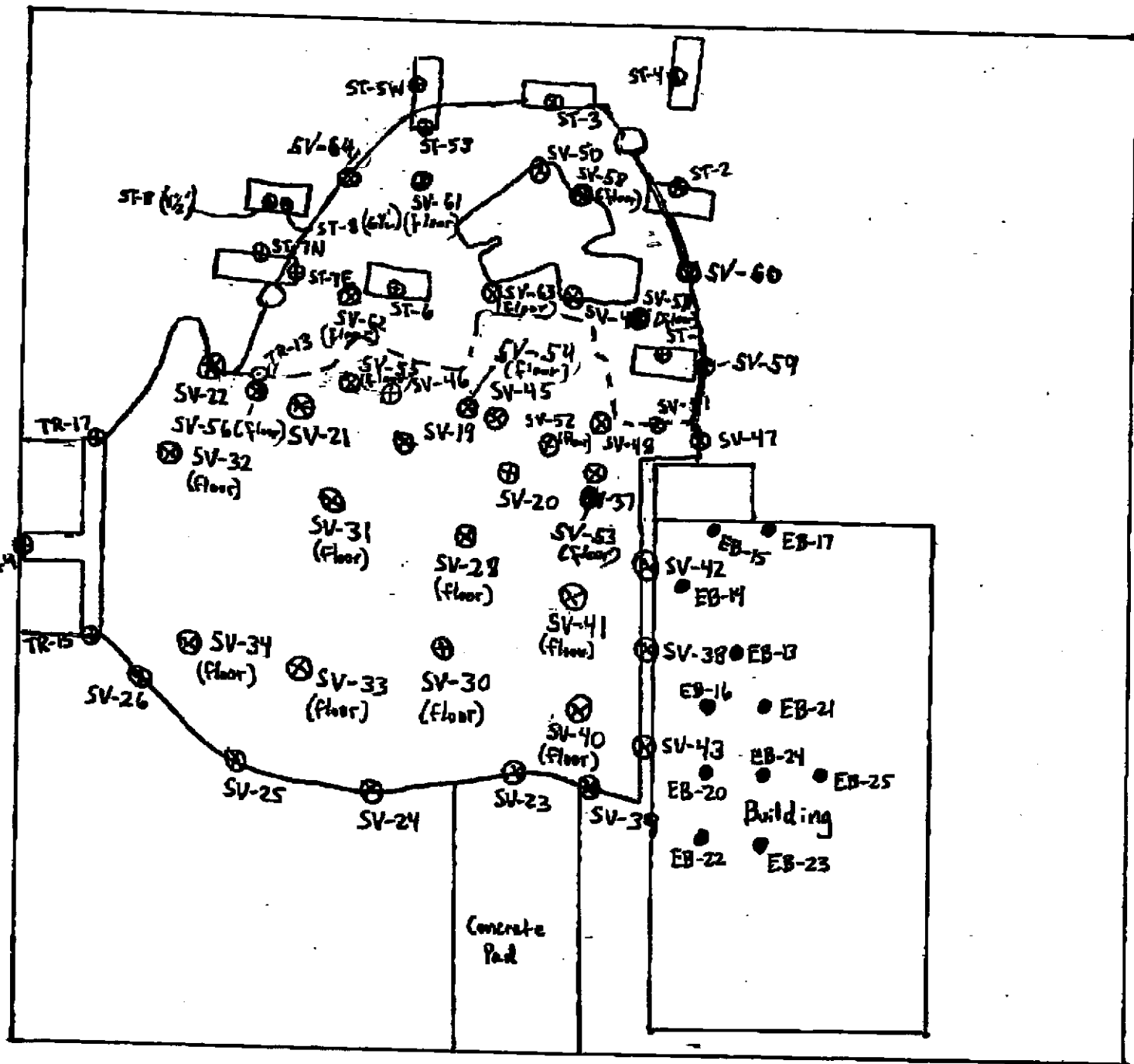


Mark Arniola  
Senior Project Geologist

---

Mail copy to follow:    Yes    No    Time Sent: \_\_\_\_\_ Sent By: \_\_\_\_\_

Doyle Avenue



Powell Street