

ENGEO

INCORPORATED

2401 Crow Canyon Road • Suite 200 • San Ramon, CA 94583 (925) 838-1600 • Fax (925) 838-7425
 425 Merchant Street • Suite 101 • Vacaville, CA 95688 (707) 455-7833 • Fax (707) 455-7844
 6288 San Ignacio Avenue • Suite A • San Jose, CA 95119 (408) 574-4900 • Fax (408) 574-4902
 2880 North Tracy Boulevard • Suite 3 • Tracy, CA 95378 (209) 835-0610 • Fax (209) 835-0675

FAX TRANSMITTAL

TO: AC EHD-Attn Eva Chu

DATE: 11/15/01

FROM: Keith Nowell

PROJECT NO.: 5403.3001.01

FAX NO.: 510/ 337- 9335

SUBJECT: AAA Trucking

CC:

TOTAL PAGES INCLUDING THIS PAGE: 3

REMARKS:

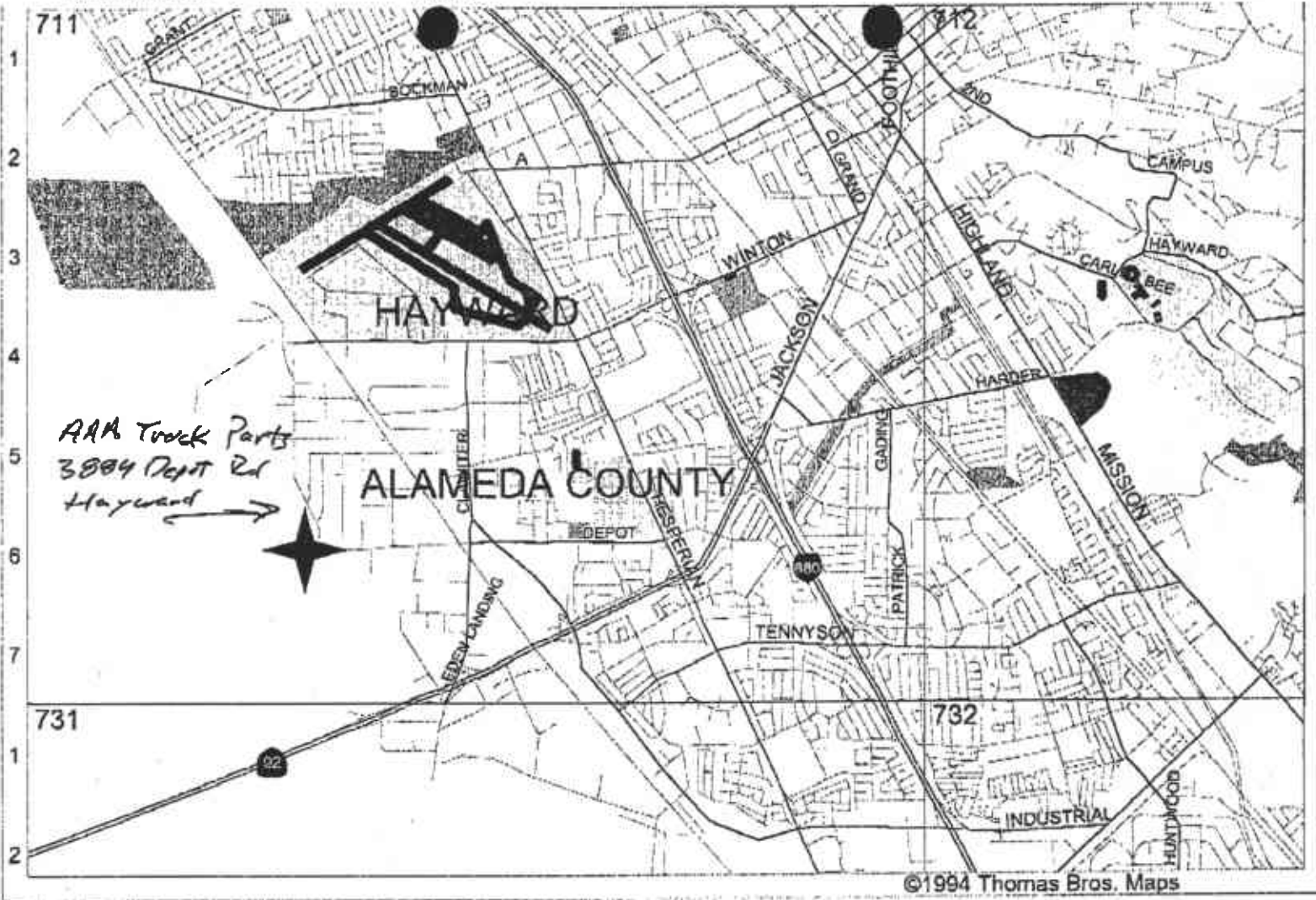
- Urgent
 For your information
 For your review
 Reply ASAP
 Please comment
 This is the only copy you will receive
- A copy will also be sent via:
 U. S. Mail
 Overnight Mail
 Courier/Hand Delivery

Eva,

Here are the site location and site plan maps for the AAA Trucking site in Hayward. Adjustments to the locations of the Southern 3 locations have been made per site plan. Drilling will commence today @ ~ 10 AM.

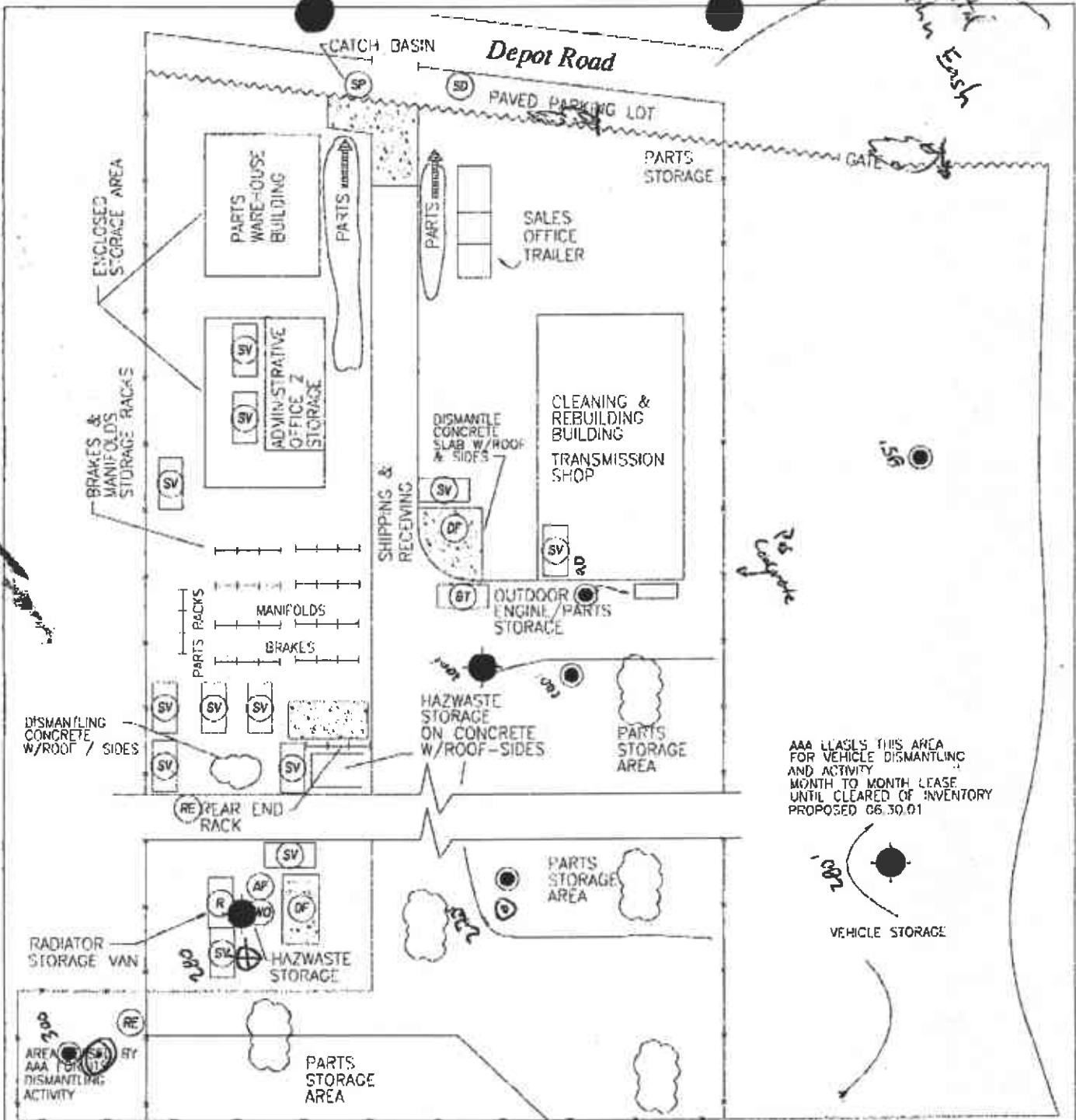
Keith

THE INFORMATION CONTAINED IN THIS FACSIMILE IS CONFIDENTIAL AND MAY ALSO BE SUBJECT TO THE ATTORNEY CLIENT PRIVILEGE OR MAY CONSTITUTE PRIVILEGED WORK PRODUCT. The information is intended only for the use of the individual or entity to whom it is addressed. If you are not the intended recipient, or the agent or employee responsible to deliver it to the intended recipient, you are hereby notified that any use, dissemination, distribution or copying of this communication is strictly prohibited. If you have received this facsimile in error, please notify us by telephone immediately and return the original message to us at the address above via the U.S. Postal Service. Thank you.





Engco - # 5403.3.001.01
 Hayward project
 P2./2

COPYRIGHT © 2001 BY ENGEO INCORPORATED THIS DOCUMENT MAY NOT BE REPRODUCED IN WHOLE OR IN PART BY ANY MEANS WHATSOEVER, NOR MAY IT BE QUOTED OR EXCERPTED WITHOUT THE EXPRESS WRITTEN CONSENT OF ENGEO INCORPORATED.



EXPLANATION

-  APPROXIMATE LOCATION OF PROPOSED GEOPROBE (SOIL SAMPLING)
-  APPROXIMATE LOCATION OF PROPOSED GEOPROBE (SOIL AND GROUNDWATER SAMPLING)



BASE MAP SOURCE: NEST ENVIRONMENTAL SERVICES



SITE PLAN
AAA TRUCK PARTS
HAYWARD, CALIFORNIA

PROJECT NO.: 5403.3.001.01

DATE: NOVEMBER 2001

DRAWN BY: DLB

CHECKED BY:

FIGURE NO.

2

5403/00101-2 SITE PLAN

ORIGINAL FIGURE PRINTED IN COLOR