

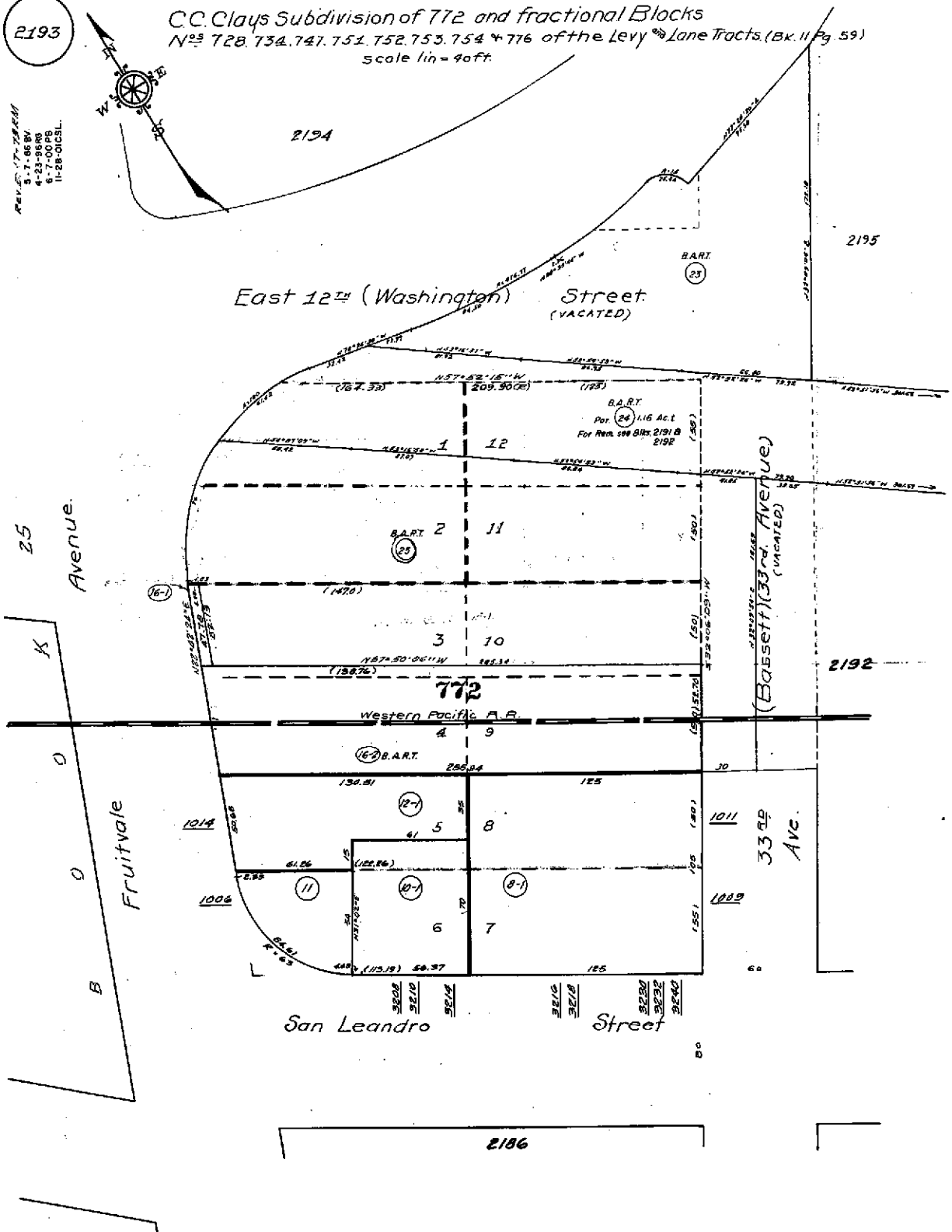
ASSESSOR'S MAP 33

Code Area No. 17-032

CC Clays Subdivision of 772 and fractional Blocks
 Nos 728, 734, 747, 751, 752, 753, 754 & 716 of the Levy Lane Tracts (Bk. 11 Pg. 59)
 scale 1 in = 40 ft.

2193

REV. 11-17-2008M
 5-7-06 BV
 4-23-06 RB
 6-7-00 PB
 11-28-01 CSL



ASSESSOR'S MAP 33

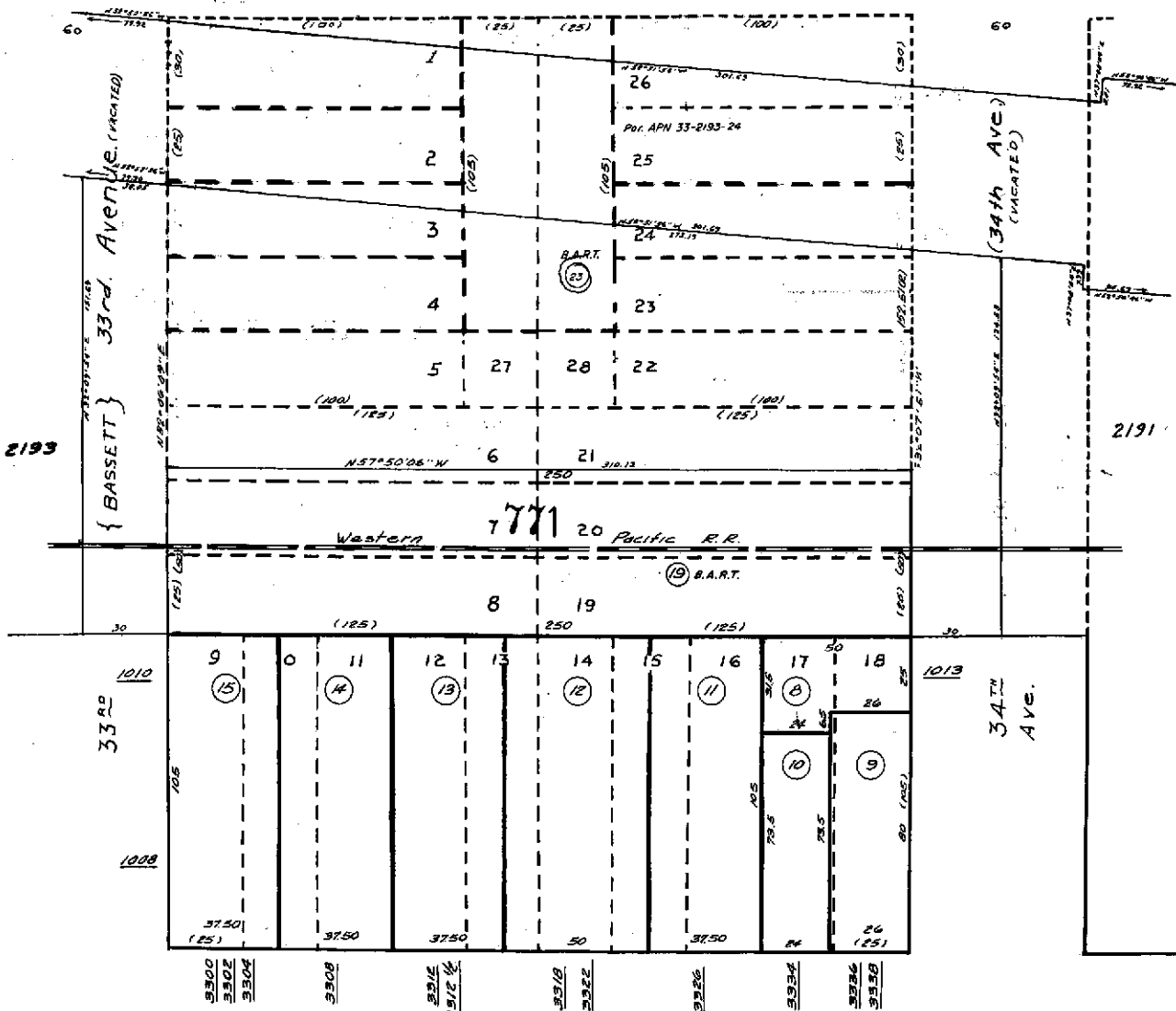
Code Area No. 17-032

2192

Map of a Resubdivision of Block 771
of the Levy Tract. (Bk. 14 Pg. 15)
Scale 1 in = 30 ft.

Rev. 2-1-84
3-1-84
4-23-86 RC
6-7-00 PB
11-28-01 CSL

(East 12th { WASHINGTON } Street.)
(VACATED)



East 10th - San Leandro - Street.

2187

ASSESSOR'S MAP 33

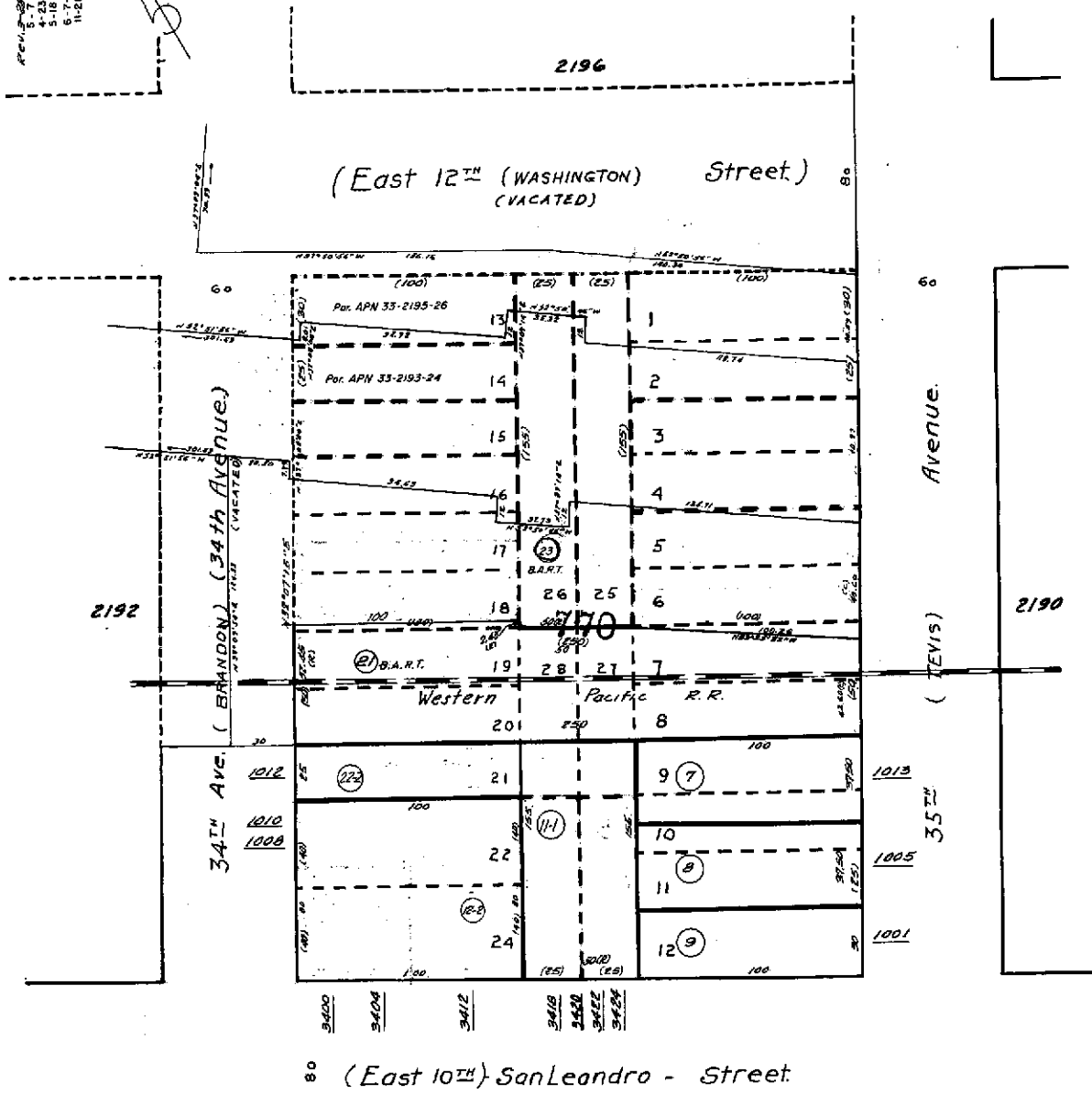
Code Area No.17-032

2191

Map of Syndicate Investment Company's
Subdivision of Blocks N: 751-752-753-754
769th & 770th of the Levy and Lane Tracts. (Bk. 14 Pg. 19)

Scale 1 in = 40 ft.

REV. 5-29-2004
5-7-05 BV
4-23-06 R0
5-18-08 WL
6-7-09 CE
11-28-09 SL

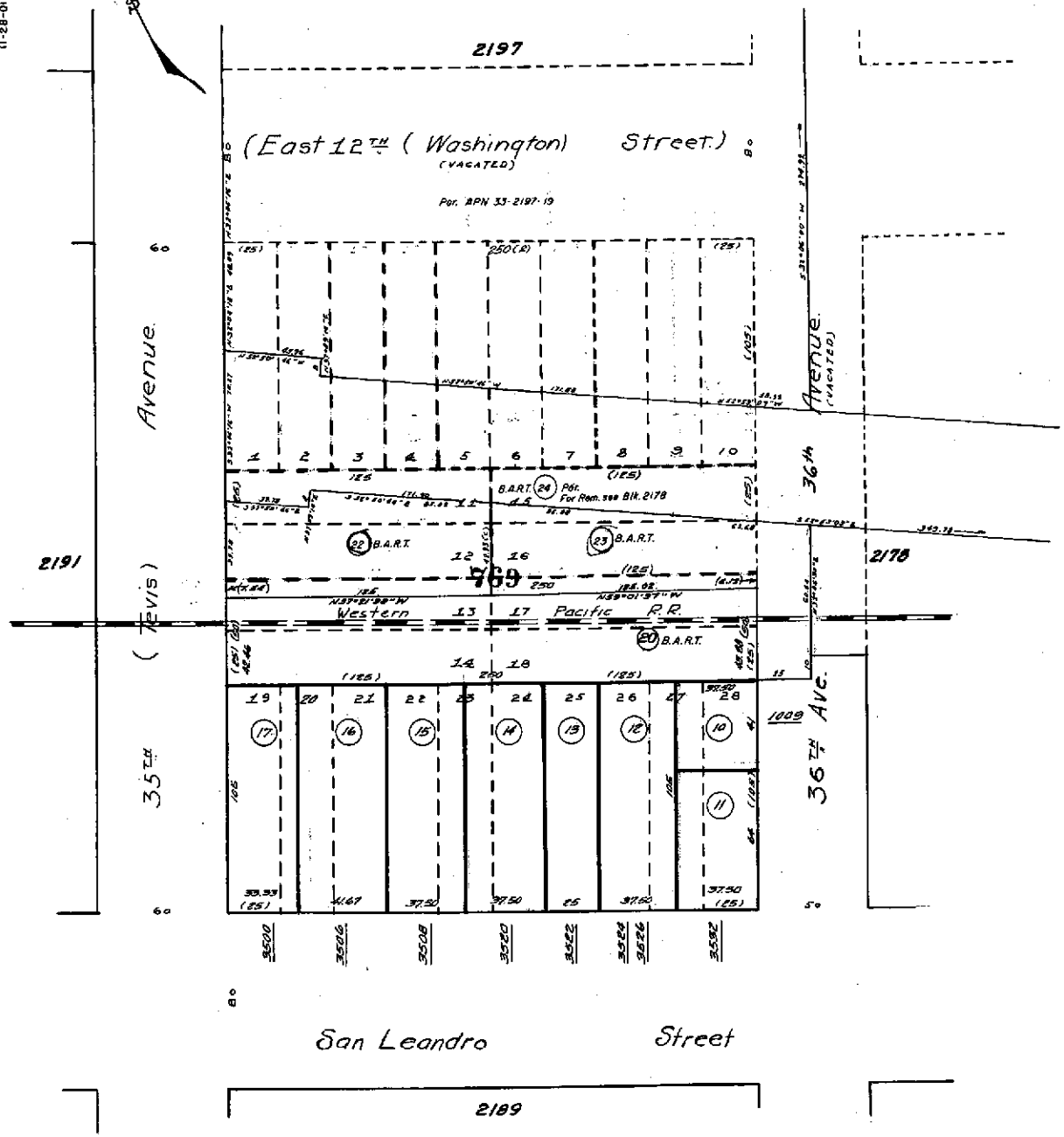


ASSESSOR'S MAP 33

Map of Syndicate Investment Company's
Subdivision of Blocks N^o 751, 752, 753, 754, 769
& 770 of the Levy and Lane Tracts. (Bk. 14 Pg. 19)
Scale 1 in = 40 ft.



REV. 2-7-86
5-7-86
4-23-86 RB
6-7-86 RB
11-28-86 CAL.



REV. 2-7-86
5-7-86
4-23-86 RB
6-7-86 RB
11-28-86 CAL.



ASSESSOR'S MAP 33

Map of Syndicate Investment Company's
Subdivision of Blocks N^o 751, 752, 753, 754, 769
& 770 of the Levy and Lane Tracts. (Bk. 14 Pg. 19)
Scale 1 in = 40 ft.

ASSESSOR'S MAP 33

Code Area No. 17-032

Map of the Fruitvale Terminal Tract. (Bk. 15 Pg. 41)

Scale 1/4" = 30ft.

2178

2177

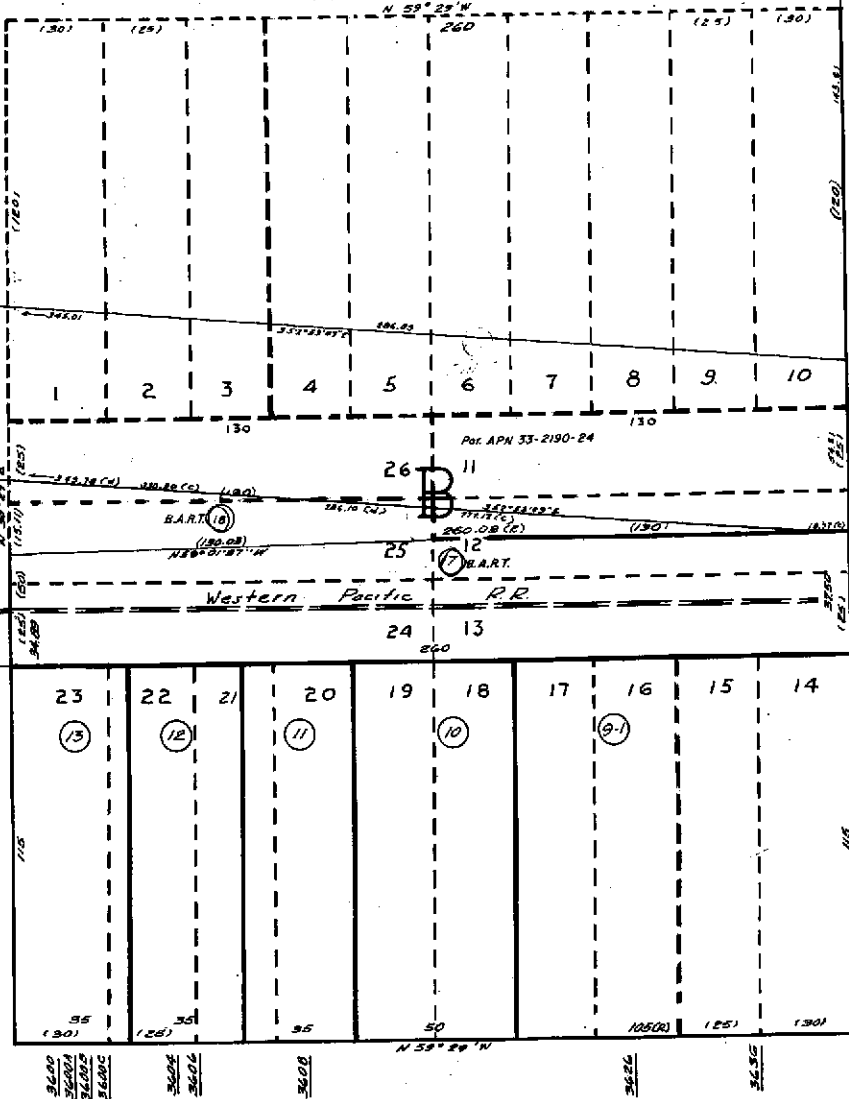
(East 12th) { WASHINGTON } (Street)
(VACATED)

Por. APN. 33-2177-21

APN. 42-258-01M
6.7.88BY
4.23.88BG
1.20.88CSL
11.20.88CSL

Avenue
(Wheeler)

Avenue.
(MERRILL)



(East 10th) - SanLeandro - Street.

2179

2159

1017 37th

80