



Brown and Caldwell
Consultants

3480 Buskirk Avenue
Pleasant Hill, CA 94523-4342
P.O. Box 8045
Walnut Creek, CA 94596-1220
(415) 937-9010
FAX (415) 937-9026

92 APR -9 PM 1:28

April 6, 1992

Mr. Robert Weston
Alameda County Department of
Health Services
Hazardous Materials Program
80 Swan Way, Suite 200
Oakland, California 94621

11-6238-01/5

Subject: Proposed Abandonment of Monitoring Well W-2

Dear Mr. Weston:

Per our phone conversation of March 31, 1992, we are submitting this letter proposing the abandonment of Monitoring Well W-2 at the James River Corporation, Flexible Packaging Group Facility, located at 2101 Williams Street in San Leandro, California. A copy of the Harding Lawson Associates' as-built diagram for the well is enclosed with this letter. Our reasons for well abandonment are discussed below.

Since February 1990, Monitoring Well W-2 has contained an obstruction at a depth of approximately 14 feet below the ground surface. The exact cause of the obstruction is unknown. Several attempts to remove the obstruction have been made by Brown and Caldwell (BC) personnel, but have failed. During the past 2 years, groundwater levels in the well have been lower than the obstruction preventing collection of water level measurements and water quality samples. In February 1992, the groundwater level had risen to slightly above the obstruction, however, the volume of water present was inadequate for the collection of a representative sample. We believe the destruction of this well will not affect the quality of the data being collected at this site because of the proximity of Monitoring Well W-2 to other groundwater monitoring wells (i.e., W-4) completed in the same saturated interval.

Well abandonment will be performed under BC's supervision by a State of California C-57 licensed drilling subcontractor, in accordance with state well-abandonment requirements. Well abandonment will consist of completing a Zone 7 Water Agency Well Abandonment Permit, the removal of all well materials, pressure grouting the borehole with an impermeable material compatible with site geologic conditions, and preparation of a well abandonment

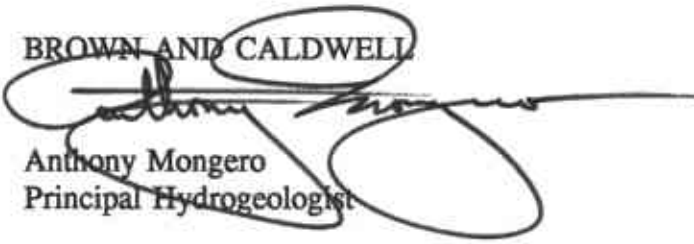
Mr. Robert Weston
April 6, 1992
Page 2

letter report for submittal to the Alameda County Department of Health. Well materials generated during abandonment will be disposed of at an approved disposal facility.

If you concur with the proposed abandonment of Monitoring Well W-2, please send a written acknowledgement to me at the address presented on this letter. Please call me at (510) 210-2203 if you have any questions or require additional information regarding this request.

Very truly yours,

~~BROWN AND CALDWELL~~



Anthony Mongero
Principal Hydrogeologist

AM:AM:lp
Enclosure

cc: Mr. Robert L. Wenning, James River Corporation

Hollow Stem Auger

98.26 ft.

Date 11-16-83

Sample Depth (ft)

WELL COMPLETION DETAILS

ASPHALT BASECOURSE

BLACK SILTY CLAY (CL) - stiff, moist, no chemical odor

GREEN - GRAY SILTY CLAY (CL) stiff, moist, slight chemical odor

BLUE - GRAY SILTY SAND (SM) medium dense, saturated, slight chemical odor

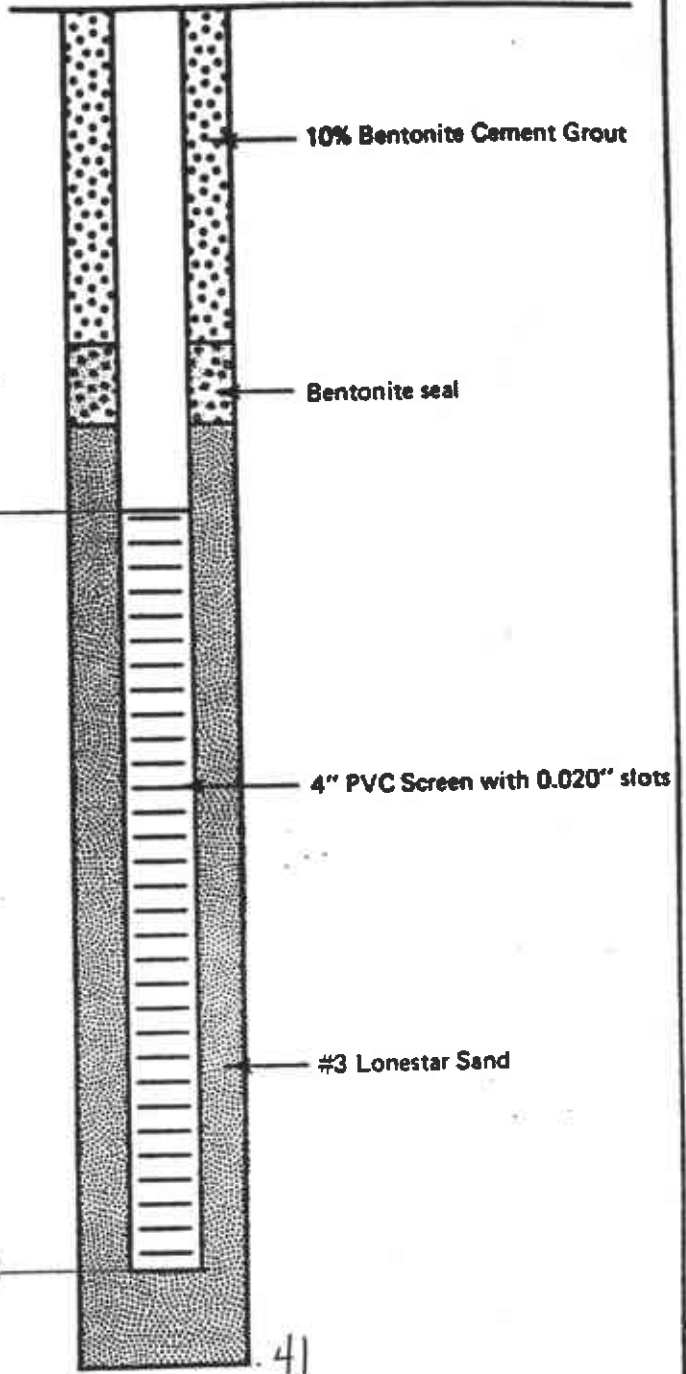
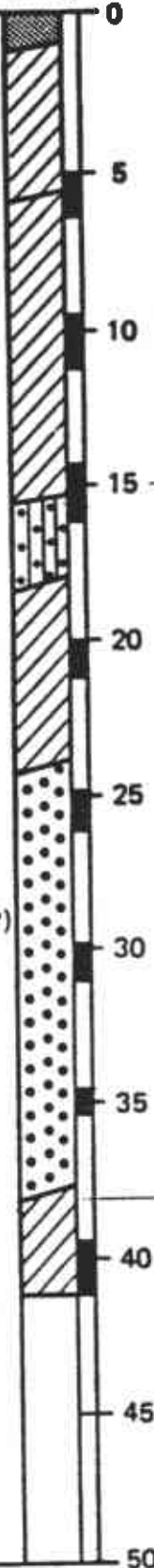
BLACK SILTY CLAY (CL) - very stiff, moist, strong chemical odor

BLUE - GRAY GRAVELLY SAND (SP) dense, saturated, slight chemical odor

color change to gray

BROWN SILTY CLAY (CL) - very stiff, moist, slight chemical odor

BOH at 41 feet



Harding Lawson Associates
Engineers Geologists
& Geophysicists

Geologic Log and Well Completion
Details for Monitoring Well 2
Crown Zellerbach Facility
San Leandro, California

DRAFT 3