

AGI Engineering and Environmental Consultants
Atlantic Geoscience, Inc. • 3005 Riverbend Drive • Snellville, Georgia 30278 • (770) 979-5275

770
Field
Notes
406-415-3670
406-415-3670

706 298 7011
950-494-261

May 29, 1998

Ade Fagorala
California Regional Water Quality Control Board
2101 Webster Street
Suite 500
Oakland, CA 94612

CALIFORNIA REGIONAL WATER
QUALITY CONTROL BOARD
JUN 11 8 1998

RE: **Watkins Terminal, San Leandro, CA**
2075 Williams Street
Work Plan No. 2 Revisions
AGI Job No. HC-96-002

Dear Mr. Fagorala:

As we have discussed on the telephone, Atlantic Geoscience, Inc. has recently completed a review of the available data from the adjacent PRINTPAC property. PRINTPAC is located immediately west of the Watkins property. Below is a summary of our review and our recommended changes in the work plan

PRINTPAC Investigation

PRINTPAC has had an ongoing groundwater investigation performed on their property. This investigation has been coordinated with the Alameda County Dept. of Environmental Health for an underground storage tank. The groundwater was monitored from 1990 through 1995 for a variety of compounds including VOC's. AGI reviewed only the VOC information associated with PCE (perchloroethylene), TCE (trichloroethylene), DCE (dichloroethylene), and VC (vinyl chloride) data. This data is attached with this report.

The PRINTPAC wells are located in the center of their property which corresponds with the northern most portion of the Watkins property. Figure 1 shows the approximate well locations. The PRINTPAC groundwater flow data generally agrees with our report indicating that the groundwater flow direction is to the west at a depth of approximately 15 feet with a horizontal velocity estimated at 1 ft per day.

The analytical data shows elevated concentrations of PCE and TCE along the eastern boundary with significantly lower concentrations further to the west. The DCE and VC (decay parameters and leading edge indicators of a PCE/TCE solvent plume) also show this general trend of decreasing concentrations to the west. However, both the DCE and



Engineering and Environmental Consultants

Atlantic Geoscience, Inc. • 2500 Atlanta Highway • Suite 414 • Athens, GA 30606 • (706) 208-7060

REMEDIAL INVESTIGATION
FREIGHT TERMINALS, INC.
2075 WILLIAMS STREET
SAN LEANDRO, CALIFORNIA
AGI Job No. EA-97-001

Prepared by:
Atlantic Geoscience, Inc.

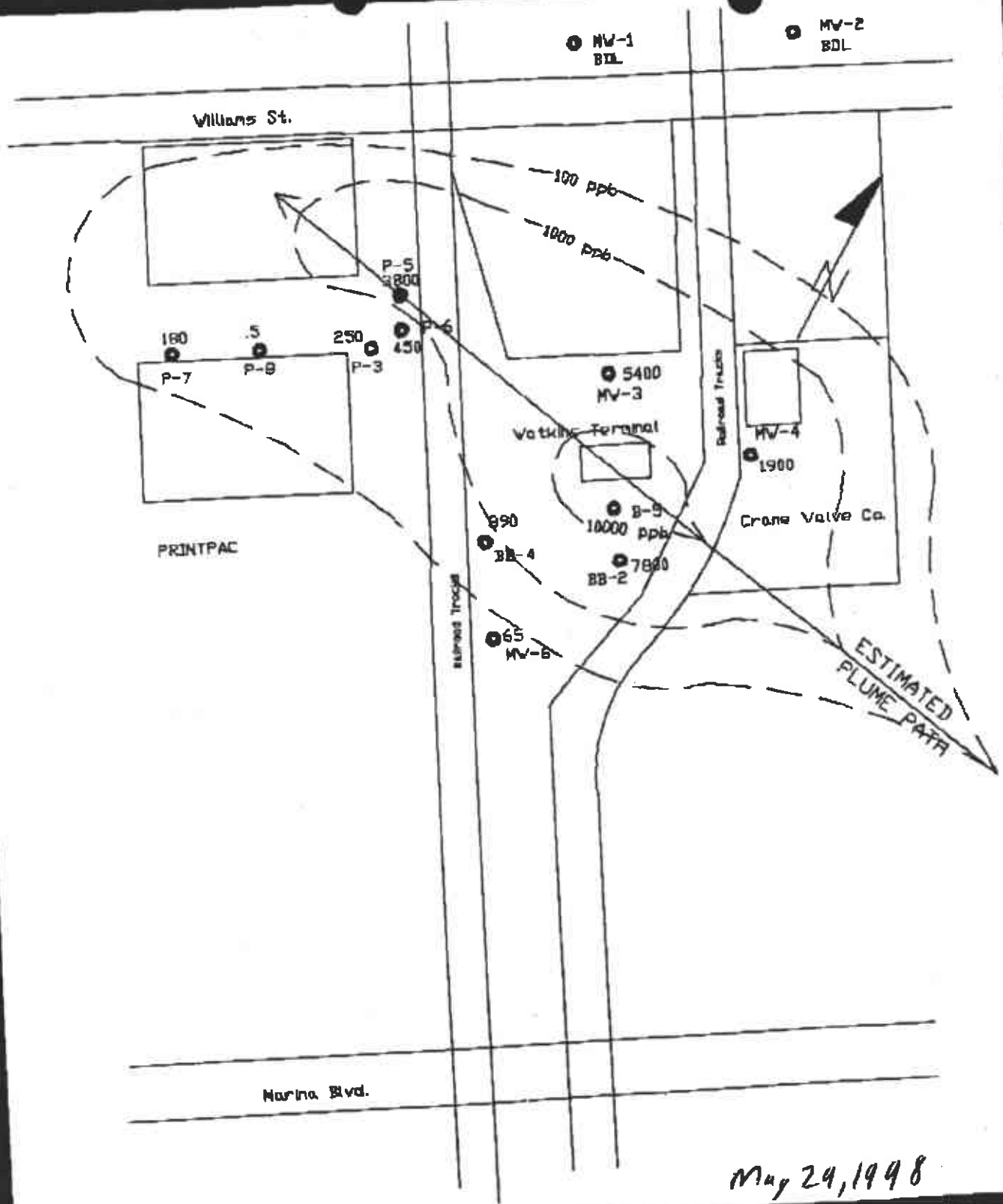


John T. Caudill
John T. Caudill,
Project Manager

Hugh A. Dougals
Hugh Dougals, RPG,
Senior Geologist

November 30, 1998

Service Nationwide



May 24, 1998

AGI Atlantic Geoscience, Inc.

Figure 2
PERC Groundwater Plume
Watkins Terminals
AGI Job No. HC-96-002
Scale: 1"=200'

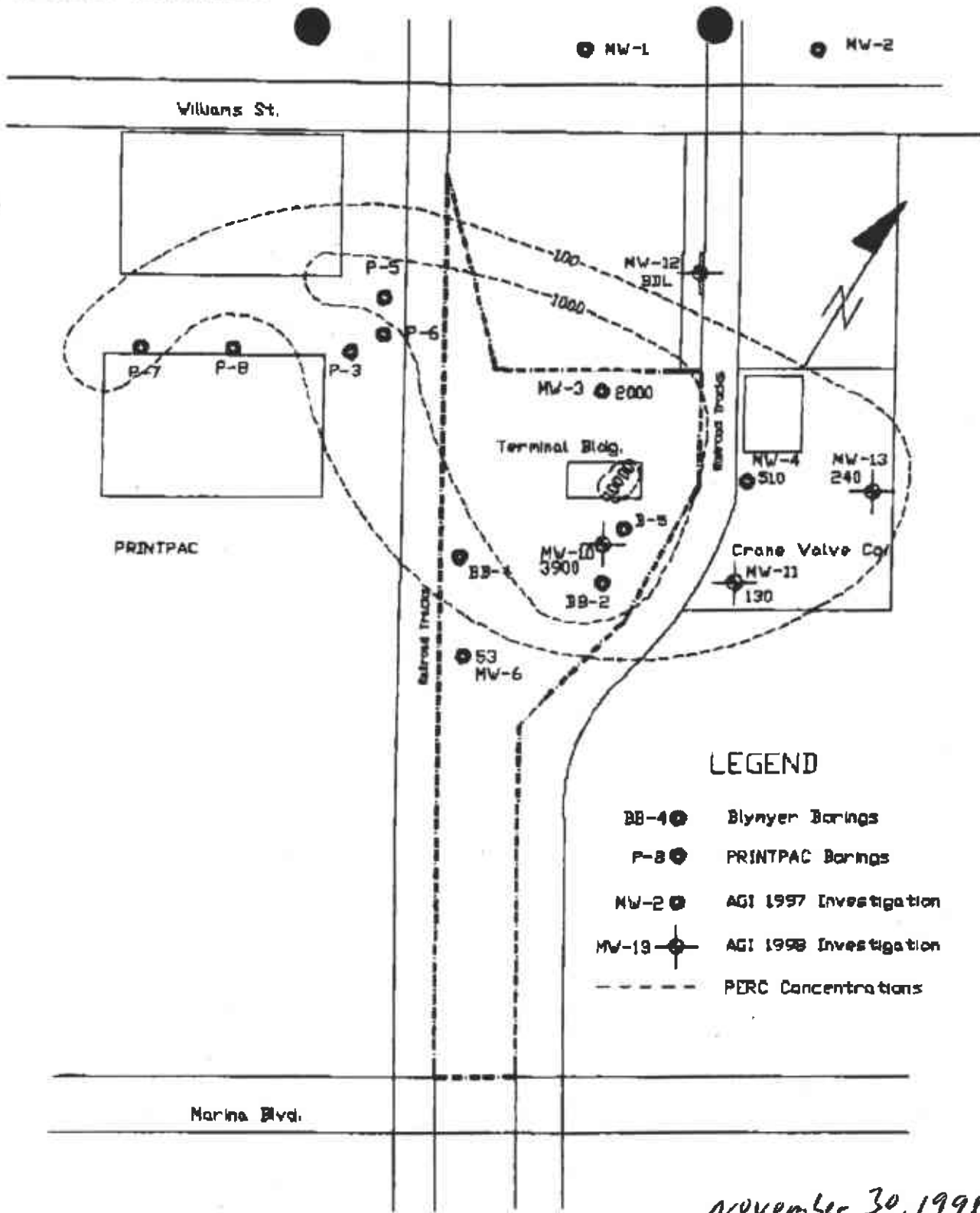
Freight Terminals, Inc.
 Site Investigation
 AGI Job No. EA-97-001
 Page 5

MW-12, and MW-13 were sampled by the geoprobe sampler at specified depths. Both TCE and PCE were detected. The results from this investigation and the previous investigations are listed in Table 2. The laboratory data sheets are located in Appendix C.

Table 2
 Groundwater Laboratory Results
 ug/l

<u>Boring</u>	<u>PCE</u>	<u>TCE</u>	
AGI 1997 Investigation 02/06/97			
MW-1	BDL	BDL	BDL: Below Detection Limits
MW-2	BDL	BDL	
MW-3	5400	58	
MW-4	1900	130	
MW-6	65	10	
AGI 1998 Investigation 11/05/98			
MW-3	2000	110	
MW-4	510	180	
MW-6	53	13	
MW-10-19'	3900	120	
MW-11-18'	130	BDL	
MW-12	BDL	90	
MW-13	240	BDL	
MW-10-32'	4600	BDL	
MW-10-50'	150	BDL	
MW-11-33'	200	49	
MW-11-49'	17	9	
Blymyer Borings 07/05/95			
BB-2	7600	880	
BB-4	890	BDL	
PRINTPAC Borings 10/95			
P-3	220	150	
P-5	3700	450	
P-6	430	250	
P-7	170	190	
P-8	0.5	0.5	

NOV 30, 1998
 2-3



LEGEND

- BB-4 ● Blyner Borings
- P-8 ● PRINTPAC Borings
- MW-2 ● AGI 1997 Investigation
- MW-13 ⊕ AGI 1998 Investigation
- - - PERC Concentrations

November 30, 1998

AGI Atlantic Geoscience, Inc.

Figure 4
PERC Concentrations 11/05/98
Freight Terminals, Inc.
AGI Job No. EA-97-001
Scale: 1"=200'