

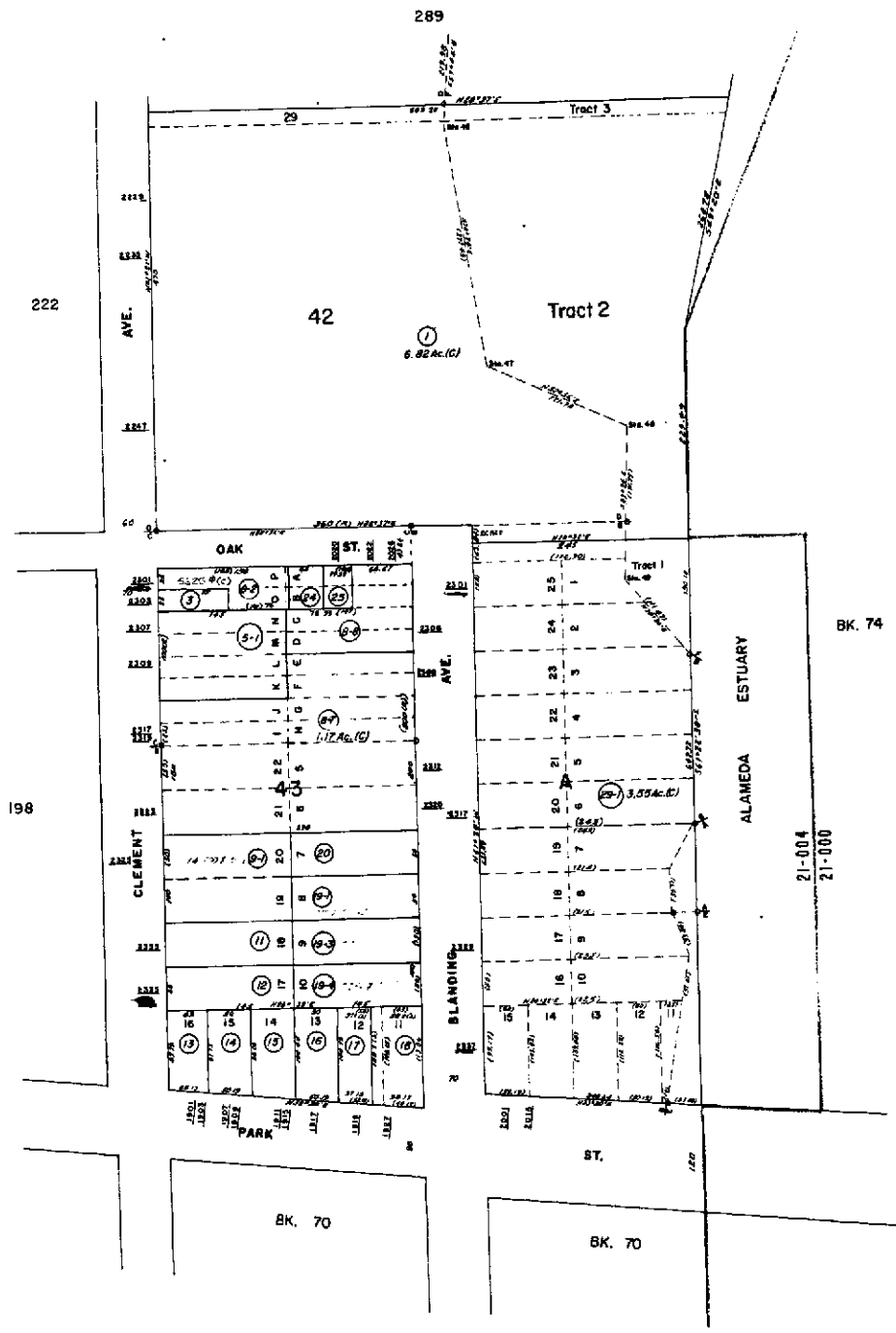
ASSESSOR'S MAP 71

Code Area Nos. 21-004

290 Scale: 1" = 100'

- (A) RCHO. SAN ANTONIO(A.M. PERALTA)AP/659
- (B) PART MINTURN TR. 1/119
- (C) SMITH'S RESUB. PART MINTURN TR. 1/141
- (D) TOWN OF ENCINAL & LD. ADJ. 6/9
- (E) HEBARD'S ADDN. LOT II BLK. A POR. MINTURN TR. 15/45
- (F) ALA. MARSH LD. 25/78

Drawn: 8-15-75 W.M. Remond
 4-29-52 PB
 05-28-55 VF
 2-17-62 DO
 6-2-63 PB
 2-05-64 OS
 4-13-65 CL
 4-23-66 CL
 9-22-68 CL



Formerly: Blks. 196, 197, Por. Blk. 224

A.C.M.

Reference: Case 5-15-27; R.S. 1245 16/44

HPN-1-1