



Mike Bauer
Project Manager
Marketing Business Unit

**Chevron Environmental
Management Company**
145 S. State College Blvd
Brea, CA 92821
Tel (714) 671-3200
Fax (714) 671-3440
mbauer@chevron.com

March 21, 2013

Mr. Jerry Wickham
Alameda County Environmental Health
1131 Harbor Bay Parkway, Suite 250
Alameda, California 94502-6577

RECEIVED

By Alameda County Environmental Health at 10:49 am, Mar 25, 2013

Re: Former Signal Oil Marine Storage and Distribution Facility
(Former Chevron Bulk Plant 206127)
2301-2311 Blanding Avenue
Alameda, California
LOP Case RO0002466

Dear Mr. Wickham:

The purpose of this letter is to verify that as a representative for Chevron Environmental Management Company (Chevron), I reviewed, and concur with, the comments in the *First Semi-Annual 2013 Groundwater Monitoring and Sampling Report* for the referenced facility, prepared on behalf of Chevron by Conestoga-Rovers & Associates. I declare under penalty of perjury that the foregoing is true and correct.

Please feel free to contact me at (714) 671-3207 if you have any questions.

Sincerely,

A handwritten signature in blue ink that reads "Mike Bauer".

Mike Bauer
Project Manager



**CONESTOGA-ROVERS
& ASSOCIATES**

10969 Trade Center Drive
Rancho Cordova, California 95670
Telephone: (916) 889-8900 Fax: (916) 889-8999
<http://www.craworld.com>

March 21, 2013

Reference No. 631916

Mr. Jerry Wickham
Alameda County Environmental Health (ACEH)
1131 Harbor Bay Parkway, Suite 250
Alameda, California 94502-6577

Re: First Semi-Annual 2013
Groundwater Monitoring and Sampling Report
Former Signal Oil Marine Storage and Distribution Facility
(Chevron Bulk Plant 206127)
2301-2311 Blanding Avenue
Alameda, California
ACEH Case RO0002466

Dear Mr. Wickham:

Conestoga-Rovers & Associates (CRA) is submitting this *First Semi-Annual 2013 Groundwater Monitoring and Sampling Report* for the site referenced above (Figure 1) on behalf of Chevron Environmental Management Company. Groundwater monitoring and sampling was performed by Gettler-Ryan, Inc. (G-R) of Dublin, California. G-R's *Groundwater Monitoring and Sampling Data Package* is included as Attachment A. Current groundwater monitoring and sampling data are presented in Table 1 and shown on Figures 2 through 5. Well construction specifications are summarized in Table 2. Lancaster Laboratories' *Analytical Results* report is included as Attachment B. Historical groundwater monitoring and sampling data are included as Attachment C.

RESULTS OF FIRST SEMI-ANNUAL 2013 EVENT

On January 19, 2013, G-R monitored and sampled site wells per the established schedule. Results of the current monitoring event indicate the following:

- Groundwater Flow Direction Northeast
- Hydraulic Gradient 0.02
- Approximate Depth to Water 3 to 9 feet below grade

Equal
Employment Opportunity
Employer



March 21, 2013

Reference No. 631916

- 2 -

Results of the current sampling event are presented below in Table A.

TABLE A GROUNDWATER ANALYTICAL DATA						
<i>Well ID</i>	<i>TPHd¹</i> ($\mu\text{g/L}$)	<i>TPHg</i> ($\mu\text{g/L}$)	<i>Benzene</i> ($\mu\text{g/L}$)	<i>Toluene</i> ($\mu\text{g/L}$)	<i>Ethylbenzene</i> ($\mu\text{g/L}$)	<i>Total Xylenes</i> ($\mu\text{g/L}$)
<i>ESLs</i>	100	100	1	40	30	20
MW-1RA	3,000/270	1,500	180	<5	<5	<5
MW-1RB	2,000/62	200	2	<0.5	<0.5	<0.5
MW-2	<50/<50	<50	<0.5	<0.5	<0.5	<0.5
MW-3	1,600/<50	69	<0.5	<0.5	<0.5	<0.5
MW-4	380/<50	<50	<0.5	<0.5	<0.5	<0.5
MW-5	4,200/400	3,500	100	7	<5	7
MW-6	830/<50	250	3	<0.5	<0.5	<0.5

ESL Environmental screening level
¹ TPHd without and with 10 gram silica gel cleanup
Concentrations in **Bold** exceed their respective ESL.

CONCLUSIONS AND RECOMMENDATIONS

Results of this current quarterly monitoring and sampling are consistent with results from past quarters and indicate the following:

- The highest total petroleum hydrocarbons as diesel (TPHd), TPH as gasoline (TPHg), and benzene concentrations in groundwater are in the area of the former fuel pumps, and north of the former aboveground storage tanks (Figures 3 through 5).
- Analysis of TPHd using a 10 gram silica gel column cleanup resulted in a significant reduction in dissolved TPHd concentrations as compared to samples analyzed without the silica gel cleanup. Only the samples from MW-1RA and MW-5 were above the TPHd ESL using silica gel cleanup.
- Concentrations are generally stable in site wells where concentrations are detected above groundwater ESLs.

CRA recommends continuing monitoring and sampling to verify concentration trends over time.



**CONESTOGA-ROVERS
& ASSOCIATES**

March 21, 2013

Reference No. 631916

- 3 -

ANTICIPATED FUTURE ACTIVITIES

Groundwater Monitoring

G-R will monitor and sample site wells per the established semi-annual schedule. CRA will submit a groundwater monitoring and sampling report.

Piezometer Installation and Tidal Influence Study

CRA is currently awaiting ACEH comment on the November 30, 2012 *Piezometer Well Installation and Tidal Influence Study*, including a response to our request to suspend monitoring and sampling at the site.



**CONESTOGA-ROVERS
& ASSOCIATES**

March 21, 2013

Reference No. 631916

- 4 -

Please contact Brian Silva at (916) 889-8908 if you have any questions or require additional information.

Sincerely,

CONESTOGA-ROVERS & ASSOCIATES

Brian Silva

Greg Barclay, PG 6260

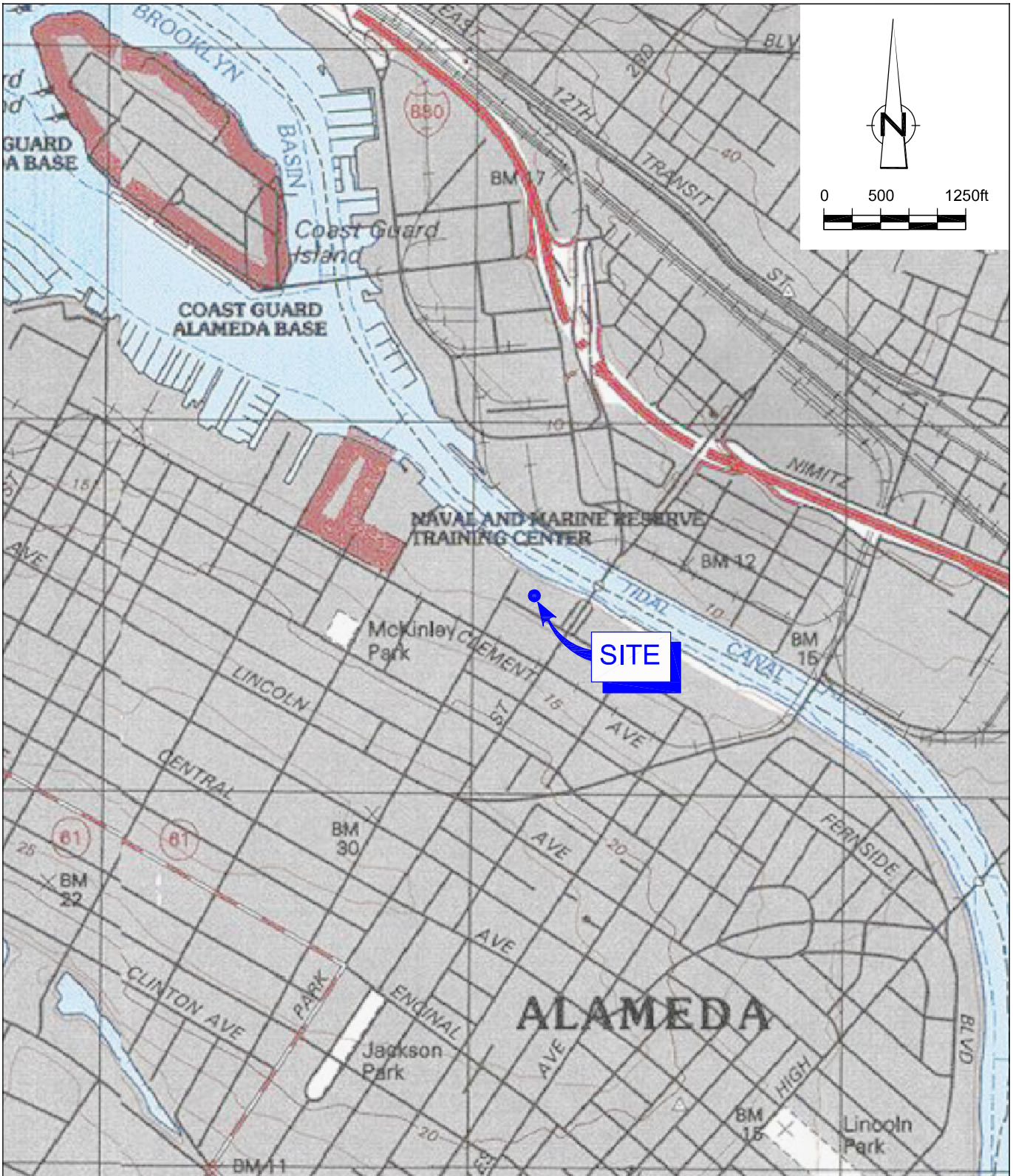


BS/cw/30
Encl.

Figure 1	Vicinity Map
Figure 2	Groundwater Elevation Contour Map
Figure 3	TPHd Concentration Contour Map
Figure 4	TPHg Concentration Contour Map
Figure 5	Benzene Concentration Contour Map
Table 1	Groundwater Monitoring and Sampling Data
Table 2	Well Construction Specifications
Attachment A	Monitoring Data Package
Attachment B	Laboratory Analytical Report
Attachment C	Historical Groundwater Monitoring and Sampling Data

cc: Mr. Mike Bauer, Chevron (*electronic only*)
Ms. Julie Beck Ball
Mr. Peter Reinhold Beck
Mr. Monroe Wingate
Mr. Tom Foley

FIGURES

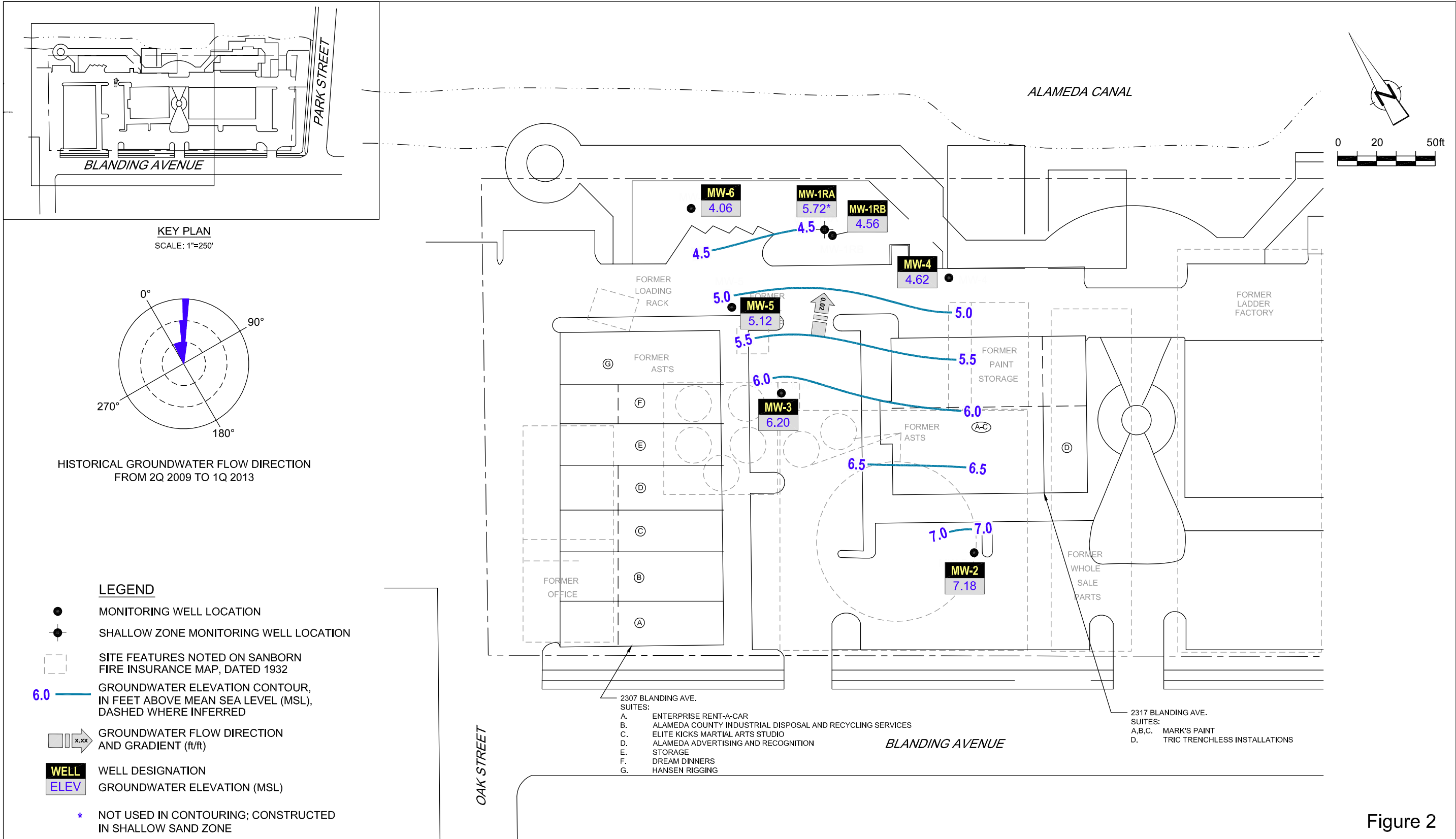


SOURCE: TOPOI MAPS.

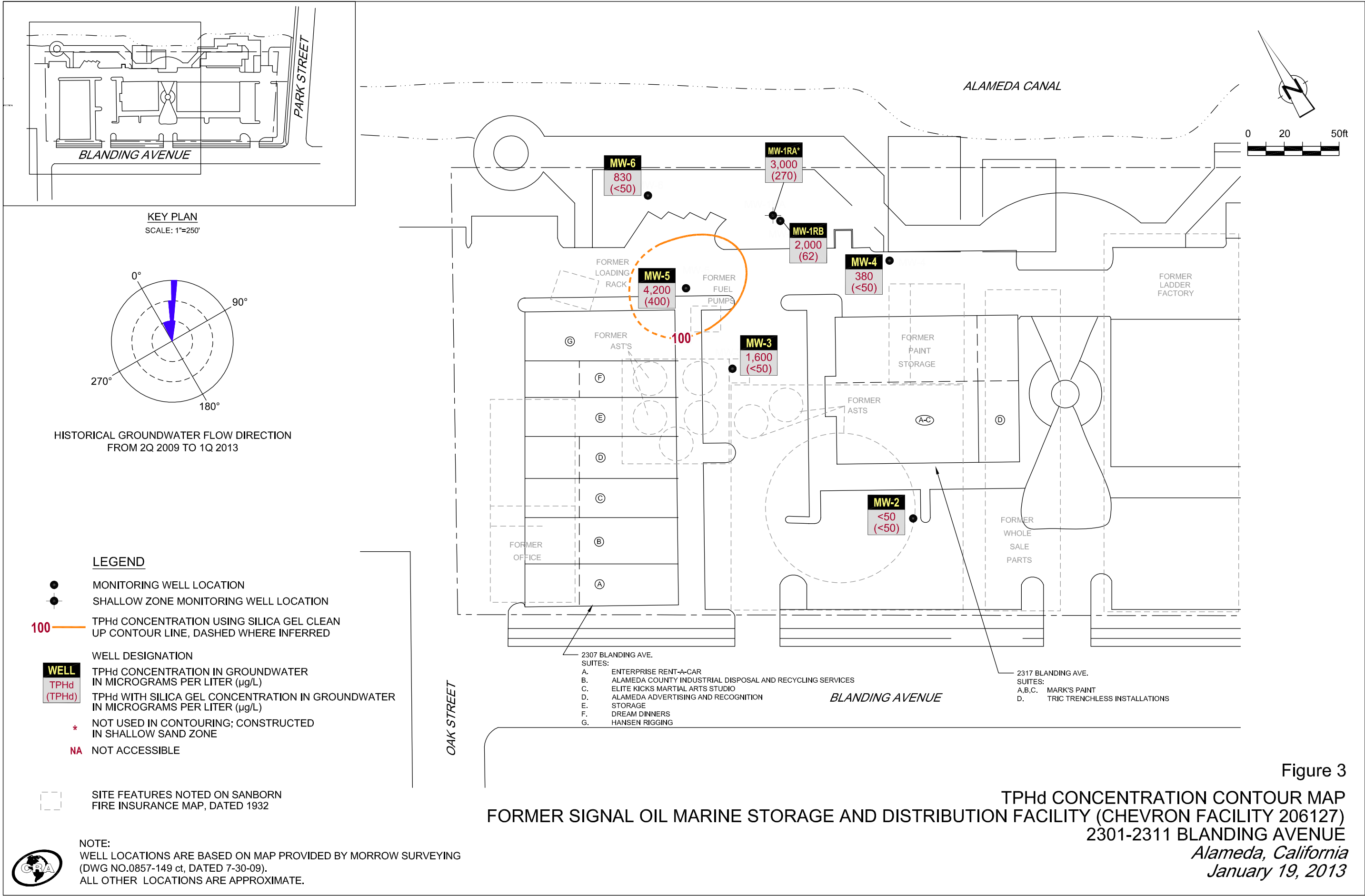
Figure 1

VICINITY MAP
 FORMER SIGNAL OIL MARINE STORAGE AND DISTRIBUTION FACILITY
 (CHEVRON FACILITY 206127)
 2301-2311 BLANDING AVENUE
 Alameda, California

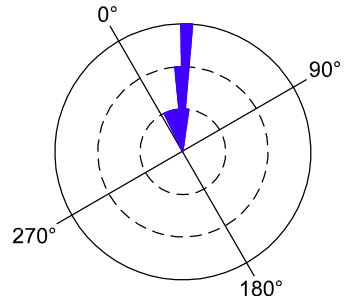




NOTE:
WELL LOCATIONS ARE BASED ON MAP PROVIDED BY MORROW SURVEYING (DWG NO.0857-149 ct, DATED 7-30-09). ALL OTHER LOCATIONS ARE APPROXIMATE.



KEY PLAN
SCALE: 1"=250'



HISTORICAL GROUNDWATER FLOW DIRECTION
FROM 2Q 2009 TO 1Q 2013

LEGEND

- MONITORING WELL LOCATION
- SHALLOW ZONE MONITORING WELL LOCATION
- 100 — TPHd CONCENTRATION USING SILICA GEL CLEAN UP CONTOUR LINE, DASHED WHERE INFERRED
- WELL**
TPHd CONCENTRATION IN GROUNDWATER IN MICROGRAMS PER LITER (µg/L)
- TPHd (TPHd) TPHd WITH SILICA GEL CONCENTRATION IN GROUNDWATER IN MICROGRAMS PER LITER (µg/L)
- * NOT USED IN CONTOURING; CONSTRUCTED IN SHALLOW SAND ZONE
- NA NOT ACCESSIBLE

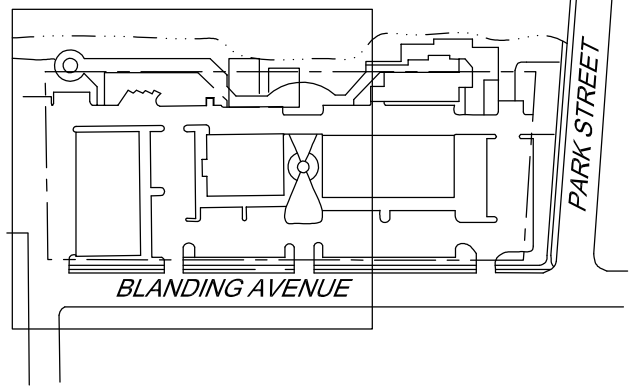
— SITE FEATURES NOTED ON SANBORN FIRE INSURANCE MAP, DATED 1932

NOTE:
WELL LOCATIONS ARE BASED ON MAP PROVIDED BY MORROW SURVEYING (DWG NO.0857-149 ct, DATED 7-30-09).
ALL OTHER LOCATIONS ARE APPROXIMATE.

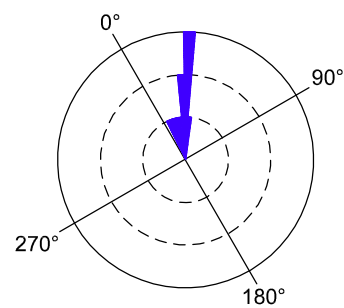
- 2307 BLANDING AVE. SUITES:
- A. ENTERPRISE RENT-A-CAR
 - B. ALAMEDA COUNTY INDUSTRIAL DISPOSAL AND RECYCLING SERVICES
 - C. ELITE KICKS MARTIAL ARTS STUDIO
 - D. ALAMEDA ADVERTISING AND RECOGNITION
 - E. STORAGE
 - F. DREAM DINNERS
 - G. HANSEN RIGGING

- 2317 BLANDING AVE. SUITES:
- A,B,C. MARK'S PAINT
 - D. TRIC TRENCHLESS INSTALLATIONS

Figure 3
TPHd CONCENTRATION CONTOUR MAP
FORMER SIGNAL OIL MARINE STORAGE AND DISTRIBUTION FACILITY (CHEVRON FACILITY 206127)
2301-2311 BLANDING AVENUE
Alameda, California
January 19, 2013

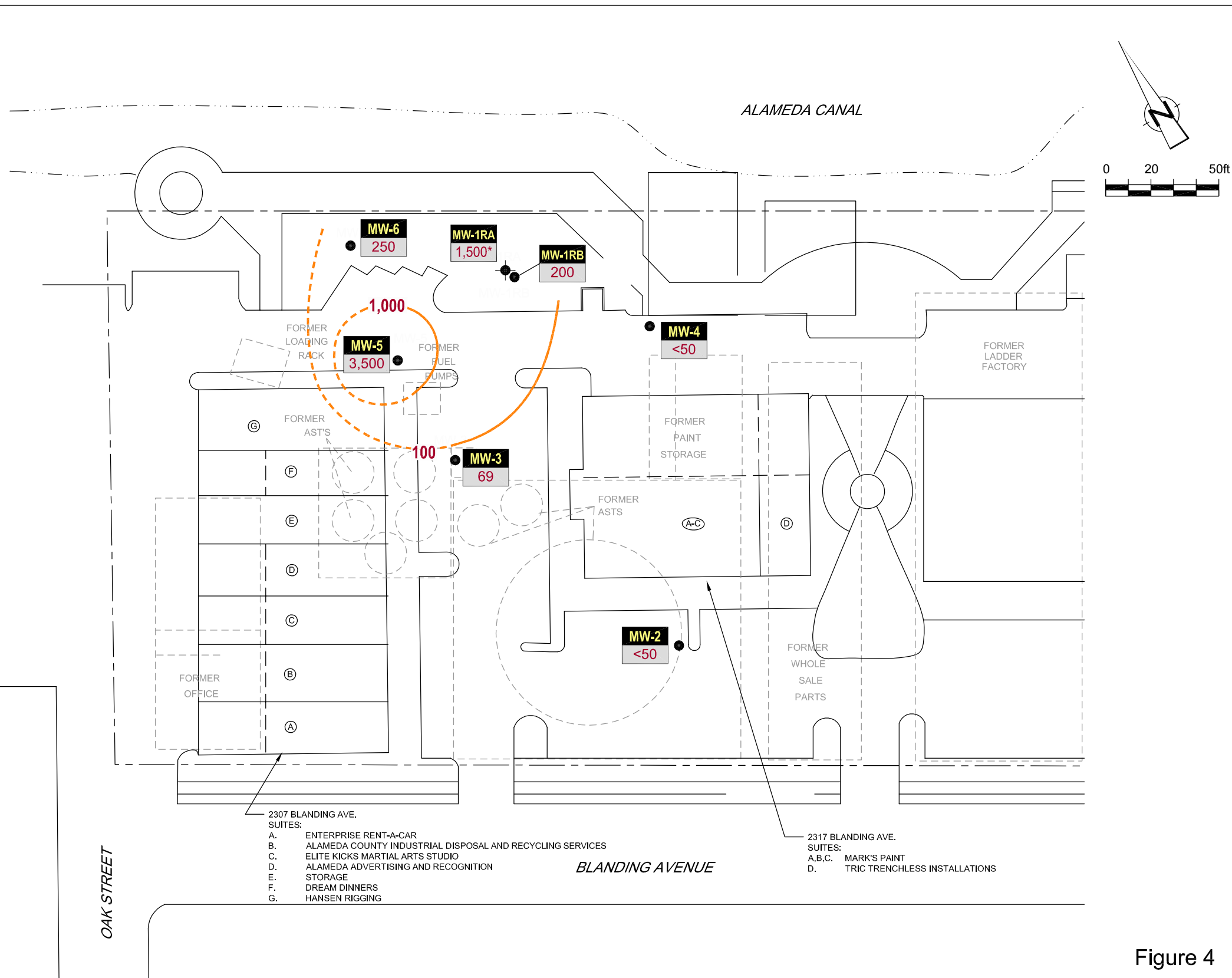


KEY PLAN
SCALE: 1"=250'



HISTORICAL GROUNDWATER FLOW DIRECTION
FROM 2Q 2009 TO 1Q 2013

- LEGEND**
- MONITORING WELL LOCATION
 - SHALLOW ZONE MONITORING WELL LOCATION
 - 100 ——— TPHg CONCENTRATION CONTOUR LINE, DASHED WHERE INFERRED
 - WELL**
TPHg
 - TPHg CONCENTRATION IN GROUNDWATER IN MICROGRAMS PER LITER (µg/L)
 - * NOT USED IN CONTOURING; CONSTRUCTED IN SHALLOW SAND ZONE
 - SITE FEATURES NOTED ON SANBORN FIRE INSURANCE MAP, DATED 1932



- 2307 BLANDING AVE. SUITES:
- A. ENTERPRISE RENT-A-CAR
 - B. ALAMEDA COUNTY INDUSTRIAL DISPOSAL AND RECYCLING SERVICES
 - C. ELITE KICKS MARTIAL ARTS STUDIO
 - D. ALAMEDA ADVERTISING AND RECOGNITION
 - E. STORAGE
 - F. DREAM DINNERS
 - G. HANSEN RIGGING

- 2317 BLANDING AVE. SUITES:
- A,B,C. MARK'S PAINT
 - D. TRIC TRENCHLESS INSTALLATIONS

Figure 4
TPHg CONCENTRATION CONTOUR MAP
FORMER SIGNAL OIL MARINE STORAGE AND DISTRIBUTION FACILITY (CHEVRON FACILITY 206127)
2301-2311 BLANDING AVENUE
Alameda, California
January 19, 2013

NOTE:
WELL LOCATIONS ARE BASED ON MAP PROVIDED BY MORROW SURVEYING (DWG NO.0857-149 ct, DATED 7-30-09).
ALL OTHER LOCATIONS ARE APPROXIMATE.



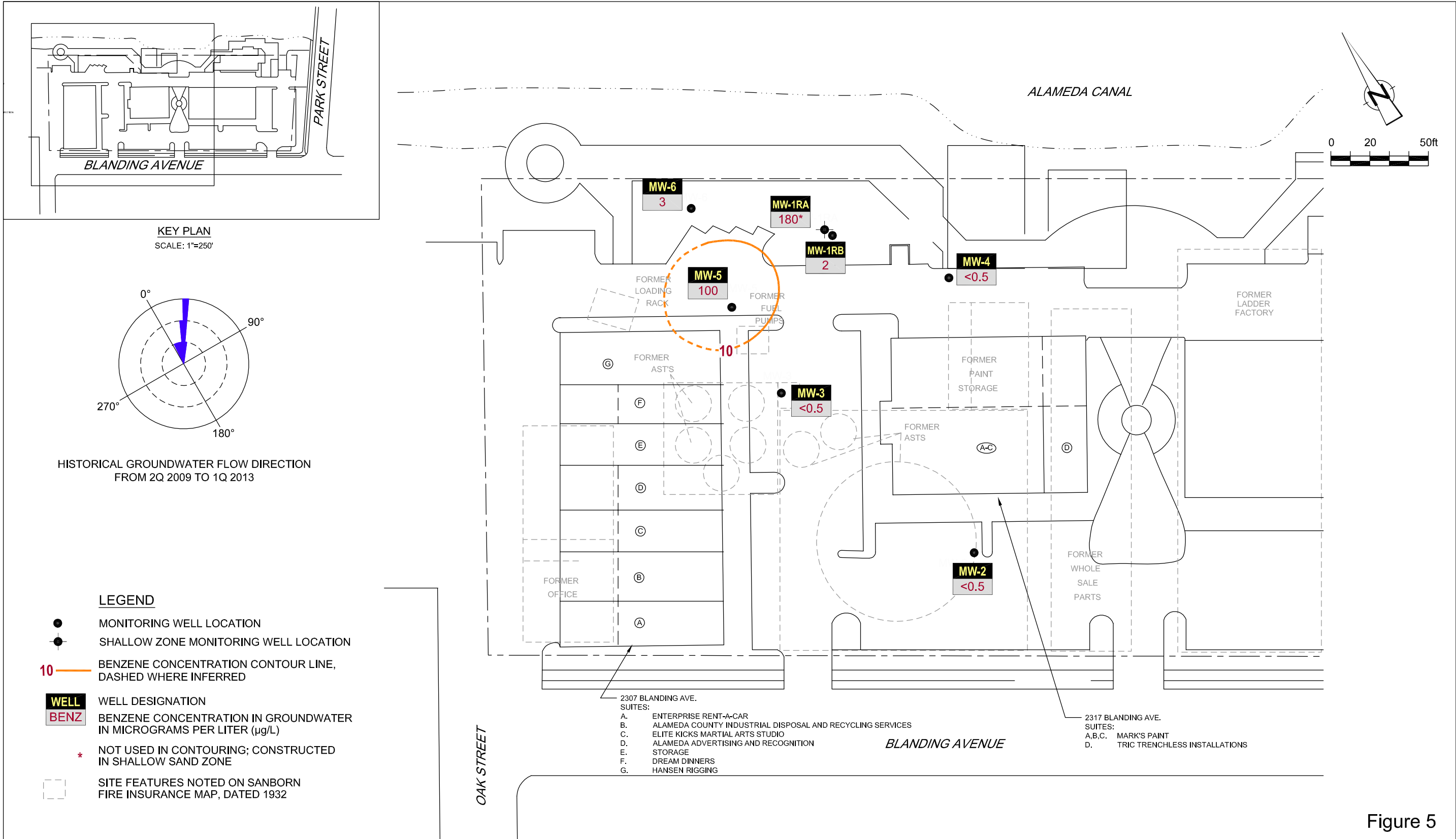


Figure 5
BENZENE CONCENTRATION CONTOUR MAP
FORMER SIGNAL OIL MARINE STORAGE AND DISTRIBUTION FACILITY (CHEVRON FACILITY 206127)
2301-2311 BLANDING AVENUE
Alameda, California
January 19, 2013

NOTE:
 WELL LOCATIONS ARE BASED ON MAP PROVIDED BY MORROW SURVEYING
 (DWG NO.0857-149 ct, DATED 7-30-09).
 ALL OTHER LOCATIONS ARE APPROXIMATE.



TABLES

TABLE 1

**GROUNDWATER MONITORING AND SAMPLING DATA
FORMER SIGNAL OIL MARINE STORAGE AND DISTRIBUTION FACILITY
CHEVRON BULK PLANT 206127
2301-2311 BLANDING AVENUE
ALAMEDA, CALIFORNIA**

Location	Date	TOC	DTW	GWE	HYDROCARBONS			PRIMARY VOCS				
					TPH-DRO	TPH-DRO w/ Si Gel	TPH-GRO	B	T	E	X	MTBE by SW8260
	Units	ft	ft	ft-amsl	µg/L	µg/L	µg/L	µg/L	µg/L	µg/L	µg/L	µg/L
MW-1	07/21/2010	13.49	9.47	4.02	440	-	65 J	<0.5	<0.5	<0.5	<0.5	<0.5
MW-1	10/22/2010 ¹	13.49	-	-	-	-	-	-	-	-	-	-
MW-1RA	10/28/2010	13.02	9.23	3.79	-	4,000	6,400	830	22	65	20	-
MW-1RA	01/14/2011	13.02	7.20	5.82	-	1,500	790	160	2	1	1	-
MW-1RA	04/19/2011	13.02	7.42	5.60	-	3,000	3,800	600	9	18	9	-
MW-1RA	06/30/2011	13.02	7.51	5.51	-	3,700	6,800	780	13	36	13	-
MW-1RA	10/14/2011	13.02	7.96	5.06	6,900	360	6,800	1,300	19	51	14	-
MW-1RA	01/18/2012	13.02	7.34	5.68	4,300	1,400	6,400	1,300	17	38	12	-
MW-1RA	04/19/2012	13.02	5.23	7.79	3,700	400	3,100	120	<5	<5	<5	-
MW-1RA	07/23/2012	13.02	7.92	5.10	6,000	1,000	-	-	-	-	-	-
MW-1RA	07/27/2012 ⁴	13.02	8.50	4.52	-	-	4,800	640	9	20	7	-
MW-1RA	01/19/2013	13.02	7.30	5.72	3,000	270	1,500	180	<5	<5	<5	-
MW-1RB	10/28/2010	13.21	9.00	4.21	-	1,600	650	3	<0.5	0.8	<0.5	-
MW-1RB	01/14/2011	13.21	10.97	2.24	-	960	150	1	<0.5	<0.5	<0.5	-
MW-1RB	04/19/2011	13.21	12.11	1.10	-	1,200	190	6	<0.5	<0.5	<0.5	-
MW-1RB	06/30/2011	13.21	11.86	1.35	-	1,900	310	9	<0.5	<0.5	<0.5	-
MW-1RB	10/14/2011	13.21	12.14	1.07	4,000	57	300	15	<0.5	<0.5	<0.5	-
MW-1RB	01/18/2012	13.21	14.71	-1.50	2,400	260	340	11	<0.5	<0.5	<0.5	-
MW-1RB	04/19/2012	13.21	8.33	4.88	2,800	53	180	1	<0.5	<0.5	<0.5	-
MW-1RB	07/23/2012	13.21	8.96	4.25	2,700	<50	-	-	-	-	-	-

TABLE 1

**GROUNDWATER MONITORING AND SAMPLING DATA
FORMER SIGNAL OIL MARINE STORAGE AND DISTRIBUTION FACILITY
CHEVRON BULK PLANT 206127
2301-2311 BLANDING AVENUE
ALAMEDA, CALIFORNIA**

Location	Date	TOC	DTW	GWE	HYDROCARBONS			PRIMARY VOCS					
					TPH-DRO	TPH-DRO w/ Si Gel	TPH-GRO	B	T	E	X	MTBE by SW8260	
	Units	ft	ft	ft-amsl	µg/L	µg/L	µg/L	µg/L	µg/L	µg/L	µg/L	µg/L	µg/L
MW-1RB	07/27/2012 ⁴	13.21	8.45	4.76	-	-	990	89	1	0.8	0.7	-	-
MW-1RB	01/19/2013	13.21	8.65	4.56	2,000	62	200	2	<0.5	<0.5	<0.5	<0.5	-
MW-2	07/21/2010	10.63	4.12	6.51	65 J	-	<50	<0.5	<0.5	<0.5	<0.5	<0.5	-
MW-2	10/22/2010	10.63	4.31	6.32	-	58	<50	<0.5	<0.5	<0.5	<0.5	<0.5	-
MW-2	10/28/2010 ²	10.63	3.65	6.98	-	-	-	-	-	-	-	-	-
MW-2	01/14/2011	10.63	3.12	7.51	-	68	<50	<0.5	<0.5	<0.5	<0.5	<0.5	-
MW-2	04/19/2011	10.63	3.51	7.12	-	<50	<50	<0.5	<0.5	<0.5	<0.5	<0.5	-
MW-2	06/30/2011	10.63	3.74	6.89	-	120	<50	<0.5	<0.5	<0.5	<0.5	<0.5	-
MW-2	10/14/2011	10.63	3.52	7.11	160	<50	<50	<0.5	<0.5	<0.5	<0.5	<0.5	-
MW-2	01/18/2012	10.63	3.85	6.78	140	<50	<50	<0.5	<0.5	<0.5	<0.5	<0.5	-
MW-2	04/19/2012	10.63	3.16	7.47	<50	<50	<50	<0.5	<0.5	<0.5	<0.5	<0.5	-
MW-2	07/23/2012 ³	10.63	-	-	-	-	-	-	-	-	-	-	-
MW-2	07/27/2012	10.63	3.40	7.23	-	-	<50	<0.5	<0.5	<0.5	<0.5	<0.5	-
MW-2	01/19/2013	10.63	3.45	7.18	<50	<50	<50	<0.5	<0.5	<0.5	<0.5	<0.5	-
MW-3	07/21/2010	10.72	5.09	5.63	640	-	65 J	0.6 J	<0.5	<0.5	<0.5	<0.5	-
MW-3	10/22/2010	10.72	5.32	5.40	-	570	73	<0.5	<0.5	<0.5	<0.5	<0.5	-
MW-3	10/28/2010 ²	10.72	4.74	5.98	-	-	-	-	-	-	-	-	-
MW-3	01/14/2011	10.72	4.11	6.61	-	1,000	91	<0.5	<0.5	<0.5	<0.5	<0.5	-
MW-3	04/19/2011	10.72	5.03	5.69	-	1,200	180	<0.5	<0.5	<0.5	<0.5	<0.5	-
MW-3	06/30/2011	10.72	4.97	5.75	-	740	<50	<0.5	<0.5	<0.5	<0.5	<0.5	-

TABLE 1

**GROUNDWATER MONITORING AND SAMPLING DATA
FORMER SIGNAL OIL MARINE STORAGE AND DISTRIBUTION FACILITY
CHEVRON BULK PLANT 206127
2301-2311 BLANDING AVENUE
ALAMEDA, CALIFORNIA**

Location	Date	TOC	DTW	GWE	HYDROCARBONS			PRIMARY VOCS					
					TPH-DRO	TPH-DRO w/ Si Gel	TPH-GRO	B	T	E	X	MTBE by SW8260	
	Units	ft	ft	ft-amsl	µg/L	µg/L	µg/L	µg/L	µg/L	µg/L	µg/L	µg/L	µg/L
MW-3	10/14/2011	10.72	4.52	6.20	1,800	<50	88	<0.5	<0.5	<0.5	<0.5	-	
MW-3	01/18/2012	10.72	5.22	5.50	1,700	<50	<50	<0.5	<0.5	<0.5	<0.5	-	
MW-3	04/19/2012	10.72	4.63	6.09	3,000	50	260	<0.5	<0.5	<0.5	<0.5	-	
MW-3	07/23/2012	10.72	4.89	5.83	1,200	<50	-	-	-	-	-	-	
MW-3	07/27/2012 ⁴	10.72	4.58	6.14	-	-	<50	<0.5	<0.5	<0.5	<0.5	-	
MW-3	01/19/2013	10.72	4.52	6.20	1,600	<50	69	<0.5	<0.5	<0.5	<0.5	-	
MW-4	07/21/2010	11.40	6.72	4.68	<50	-	<50	<0.5	<0.5	<0.5	<0.5	-	
MW-4	10/22/2010	11.40	6.87	4.53	-	91	<50	<0.5	<0.5	<0.5	<0.5	-	
MW-4	10/28/2010 ²	11.40	6.38	5.02	-	-	-	-	-	-	-	-	
MW-4	01/14/2011	11.40	5.32	6.08	-	<50	<50	<0.5	<0.5	<0.5	<0.5	-	
MW-4	04/19/2011	11.40	7.65	3.75	-	<50	<50	<0.5	<0.5	<0.5	<0.5	-	
MW-4	06/30/2011	11.40	6.93	4.47	-	<50	<50	<0.5	<0.5	<0.5	<0.5	-	
MW-4	10/14/2011	11.40	5.66	5.74	440	<50	<50	<0.5	<0.5	<0.5	<0.5	-	
MW-4	01/18/2012	11.40	8.36	3.04	330	<50	<50	<0.5	<0.5	<0.5	<0.5	-	
MW-4	04/19/2012	11.40	6.40	5.00	360	<50	<50	<0.5	0.5	<0.5	<0.5	-	
MW-4	07/23/2012 ³	11.40	-	-	-	-	-	-	-	-	-	-	
MW-4	07/27/2012	11.40	6.39	5.01	-	-	<50	<0.5	<0.5	<0.5	<0.5	-	
MW-4	01/19/2013	11.40	6.78	4.62	380	<50	<50	<0.5	<0.5	<0.5	<0.5	-	
MW-5	07/21/2010	10.50	5.76	4.74	2,000	-	1,500	80	2	1	2	-	
MW-5	10/22/2010	10.50	5.94	4.56	-	1,500	830	47	<0.5	1	<0.5	-	

TABLE 1

**GROUNDWATER MONITORING AND SAMPLING DATA
FORMER SIGNAL OIL MARINE STORAGE AND DISTRIBUTION FACILITY
CHEVRON BULK PLANT 206127
2301-2311 BLANDING AVENUE
ALAMEDA, CALIFORNIA**

Location	Date	TOC	DTW	GWE	HYDROCARBONS			PRIMARY VOCS				MTBE by SW8260
					TPH-DRO	TPH-DRO w/ Si Gel	TPH-GRO	B	T	E	X	
	Units	ft	ft	ft-amsl	µg/L	µg/L	µg/L	µg/L	µg/L	µg/L	µg/L	µg/L
MW-5	10/28/2010 ²	10.50	5.17	5.33	-	-	-	-	-	-	-	-
MW-5	01/14/2011	10.50	4.40	6.10	-	1,800	2,100	61	4	1	6	-
MW-5	04/19/2011	10.50	5.69	4.81	-	2,000	2,200	73	4	1	6	-
MW-5	06/30/2011	10.50	5.82	4.68	-	3,200	2,900	99	6	1	7	-
MW-5	10/14/2011	10.50	4.51	5.99	4,600	89	2,300	76	5	1	5	-
MW-5	01/18/2012	10.50	5.98	4.52	3,700	460	3,500	140	7	2	10	-
MW-5	04/19/2012	10.50	5.40	5.10	3,600	310	2,000	87	5	1	5	-
MW-5	07/23/2012	10.50	5.29	5.21	4,300	380	-	-	-	-	-	-
MW-5	07/27/2012 ⁴	10.50	5.08	5.42	-	-	1,800	48	3	0.7	4	-
MW-5	01/19/2013	10.50	5.38	5.12	4,200	400	3,500	100	7	<5	7	-
MW-6	10/28/2010	12.98	8.35	4.63	-	300	620	7	<0.5	1	2	-
MW-6	01/14/2011	12.98	7.58	5.40	-	560	120	3	<0.5	<0.5	<0.5	-
MW-6	04/19/2011	12.98	9.90	3.08	-	590	240	7	<0.5	<0.5	<0.5	-
MW-6	06/30/2011	12.98	9.97	3.01	-	640	200	3	<0.5	<0.5	<0.5	-
MW-6	10/14/2011	12.98	7.40	5.58	1,700	<50	510	10	<0.5	<0.5	<0.5	-
MW-6	01/18/2012	12.98	9.82	3.16	1,300	<50	300	7	<0.5	<0.5	<0.5	-
MW-6	04/19/2012	12.98	8.02	4.96	1,600	<50	290	7	0.6	<0.5	<0.5	-
MW-6	07/23/2012	12.98	9.69	3.29	1,600	73	-	-	-	-	-	-
MW-6	07/27/2012 ⁴	12.98	8.39	4.59	-	-	450	9	<0.5	<0.5	0.6	-
MW-6	01/19/2013	12.98	8.92	4.06	830	<50	250	3	<0.5	<0.5	<0.5	-
QA	07/21/2010	-	-	-	-	-	<50	<0.5	<0.5	<0.5	<0.5	<0.5

TABLE 1

**GROUNDWATER MONITORING AND SAMPLING DATA
FORMER SIGNAL OIL MARINE STORAGE AND DISTRIBUTION FACILITY
CHEVRON BULK PLANT 206127
2301-2311 BLANDING AVENUE
ALAMEDA, CALIFORNIA**

Location	Date	TOC	DTW	GWE	HYDROCARBONS			PRIMARY VOCS					
					TPH-DRO	TPH-DRO w/ Si Gel	TPH-GRO	B	T	E	X	MTBE by SW8260	
	Units	ft	ft	ft-amsl	µg/L	µg/L	µg/L	µg/L	µg/L	µg/L	µg/L	µg/L	µg/L
QA	10/22/2010	-	-	-	-	-	<50	<0.5	<0.5	<0.5	<0.5	<0.5	<0.5
QA	10/28/2010	-	-	-	-	-	<50	<0.5	<0.5	<0.5	<0.5	<0.5	-
QA	01/14/2011	-	-	-	-	-	<50	<0.5	<0.5	<0.5	<0.5	<0.5	-
QA	04/19/2011	-	-	-	-	-	<50	<0.5	<0.5	<0.5	<0.5	<0.5	-
QA	06/30/2011	-	-	-	-	-	<50	<0.5	<0.5	<0.5	<0.5	<0.5	-
QA	10/14/2011	-	-	-	-	-	<50	<0.5	<0.5	<0.5	<0.5	<0.5	-
QA	01/18/2012	-	-	-	-	-	<50	<0.5	<0.5	<0.5	<0.5	<0.5	-
QA	04/19/2012	-	-	-	-	-	<50	<0.5	<0.5	<0.5	<0.5	<0.5	-
QA	07/23/2012	-	-	-	-	-	<50	<0.5	<0.5	<0.5	<0.5	<0.5	-
QA	01/19/2013	-	-	-	-	-	<50	<0.5	<0.5	<0.5	<0.5	<0.5	-

Abbreviations and Notes:

TOC = Top of casing

DTW = Depth to water

GWE = Groundwater elevation

(ft-amsl) = Feet above mean sea level

ft = Feet

µg/L = Micrograms per liter

TPH-DRO = Total petroleum hydrocarbons - diesel range organics

TPH-GRO = Total petroleum hydrocarbons - gasoline range organics

B = Benzene

T = Toluene

TABLE 1

**GROUNDWATER MONITORING AND SAMPLING DATA
FORMER SIGNAL OIL MARINE STORAGE AND DISTRIBUTION FACILITY
CHEVRON BULK PLANT 206127
2301-2311 BLANDING AVENUE
ALAMEDA, CALIFORNIA**

Location	Date	TOC	DTW	GWE	HYDROCARBONS			PRIMARY VOCS				
					TPH-DRO	TPH-DRO w/ Si Gel	TPH-GRO	B	T	E	X	MTBE by SW8260
	Units	ft	ft	ft-amsl	µg/L	µg/L	µg/L	µg/L	µg/L	µg/L	µg/L	µg/L

E = Ethylbenzene

X = Xylenes (Total)

MTBE = Methyl tert butyl ether

-- = Not available / not applicable

<x = Not detected above laboratory method detection limit

J = Estimated concentration

* TOC elevations for all wells were surveyed on July 30, 2009, by Morrow Surveying. Vertical Datum is NAVD 88 from GPS observations. TOC elevations were surveyed on January 25, 2001, by Virgil Chacez Land Surveying. The benchmark used for the survey was a City of Alameda benchmark being a cut square at the centerline return, south corner of Oak and Blanding, (Benchmark Elevation = 8.236 feet, NGVD 29).

1 Destroyed and re-installed as MW-1RB.

2 Monitored only for the 10/28/10 Special Event

3 Inaccessible.

4 Due to laboratory error, a second set of samples had to be collected for TPHg and BTEX on 7/27/12 for wells MW1RA, MW1RB, MW-3, MW-5 and MW-6.

**WELL CONSTRUCTION SPECIFICATIONS
FORMER SIGNAL OIL MARINE STORAGE AND DISTRIBUTION FACILITY
(CHEVRON BULK PLANT 206127)
2301-2311 BLANDING AVENUE
ALAMEDA, CALIFORNIA**

<i>Well ID</i>	<i>Date Installed</i>	<i>TOC</i>	<i>Total Depth (fbg)</i>	<i>Casing Diameter¹ (inches)</i>	<i>Slot Size (inches)</i>	<i>Screen Interval (fbg)</i>	<i>Filter Pack (fbg)</i>	<i>Status</i>
<u>Monitoring Wells</u>								
MW-1	8/15/1990	13.49	19.5	2	0.020	4-19	3-19.5	Replaced w/MW-1RB
MW-1RA	8/4/2010	13.02	13	2	0.020	8-13	7-13	Active
MW-1RB	8/4/2010	13.21	20	2	0.020	16.5-20	15.5-20	Active
MW-2	6/19/2009	10.63	18	2	0.020	10.5-15.5	10-16	Active
MW-3	6/19/2009	10.72	18.5	2	0.020	13.5-18.5	12.5-18.5	Active
MW-4	6/19/2009	11.40	20.5	2	0.020	15.5-20.5	14.5-20.5	Active
MW-5	6/23/2009	10.50	18	2	0.020	13-18	12-18	Active
MW-6	8/4/2010	12.98	20	2	0.020	16.5-20	15.5-20	Active
<u>Vapor Wells</u>								
VP-1	7/9/2008	NS	4.25	1	0.020	3.75-4.25	3.5-4.5	Vapor only
VP-2	7/9/2008	NS	4.75	1	0.020	4.25-4.75	4-5	Vapor only
VP-3	7/14/2008	NS	5.75	1	0.020	5.25-5.75	5-6	Vapor only
VP-4	7/14/2008	NS	5.75	1	0.020	5.25-5.75	5-6	Vapor only
VP-5	7/14/2008	NS	5.75	1	0.020	5.25-5.75	5-6	Vapor only
VP-6	7/9/2008	NS	5.75	1	0.020	5.25-5.75	5-6	Vapor only
<u>Sub-Slab Vapor Probes</u>								
VP-7	7/17/2009	NS	0.5	0.25	NA	NA	NA	Vapor only
VP-8	7/17/2009	NS	0.5	0.25	NA	NA	NA	Vapor only
VP-9	7/22/2009	NS	0.5	0.25	NA	NA	NA	Vapor only
VP-10	7/22/2009	NS	0.5	0.25	NA	NA	NA	Destroyed
VP-11	7/17/2009	NS	0.5	0.25	NA	NA	NA	Destroyed
VP-12	7/22/2009	NS	0.5	0.25	NA	NA	NA	Destroyed
VP-13	7/22/2009	NS	0.5	0.25	NA	NA	NA	Vapor only

Abbreviations / Notes

TOC = Top of casing elevation (feet above mean sea level)

¹ = Schedule 40 PVC casing material

fbg = Feet below grade

NA = Not applicable

NS = Not surveyed

ATTACHMENT A

MONITORING DATA PACKAGE



TRANSMITTAL

January 25, 2013
G-R #386498

TO: Mr. Brian Silva
Conestoga-Rovers & Associates
10969 Trade Center Drive, Suite 107
Rancho Cordova, California 95670

FROM: Deanna L. Harding
Project Coordinator
Gettler-Ryan Inc.
6747 Sierra Court, Suite J
Dublin, California 94568

RE: **Chevron #206127**
2301-2337 Blanding Avenue
Alameda, California
(Former Signal Oil Marine Terminal)

WE HAVE ENCLOSED THE FOLLOWING:

COPIES	DESCRIPTION
VIA PDF	Groundwater Monitoring and Sampling Data Package First Quarter Event of January 19, 2013

COMMENTS:

Pursuant to your request, we are providing you with copies of the above referenced data for your use.

Please provide us the updated historical data prior to the next monitoring and sampling event for our field use.

Please feel free to contact me if you have any comments/questions.

trans/206127

WELL CONDITION STATUS SHEET

Client/Facility #: Chevron #206127
 Site Address: 2301-2337 Blanding Avenue
 City: Alameda, CA

Job #: 386498
 Event Date: 1/19/10
 Sampler: JH

WELL ID	Vault Frame Condition	Gasket/O-Ring (M) Missing (R) Replaced	BOLTS (M) Missing (R) Replaced	Bolt Flanges B=Broken S=Stripped R=Retap	APRON Condition C=Cracked B=Broken G=Gone	Grout Seal (Deficient) inches from TOC	Casing (Condition prevents tight cap seal)	REPLACE LOCK Y/N	REPLACE CAP Y/N	WELL VAULT Manufacture/Size/ # of Bolts	Pictures Taken Y/N
MW-1RA	Ok							N	N	8" MORRISON	N
MW-1RB	Ok									↓	
MW-2	ok									12" emco	
MW-3	ok									↓	
MW-4	ok									↓	
MW-5	ok									↓	
MW-6	OK			→ 1XD	ok					8" MORRISON	

Comments _____

STANDARD OPERATING PROCEDURE - GROUNDWATER SAMPLING

Gettler-Ryan Inc. (GR) field personnel adhere to the following procedures for the collection and handling of groundwater samples prior to analysis by the analytical laboratory. All work is performed in accordance with the GR Health & Safety Plan and all client-specific programs. The scope of work and type of analysis to be performed is determined prior to commencing field work.

Prior to sampling, the presence or absence of free-phase hydrocarbons is determined using an interface probe. Product thickness, if present, is measured to the nearest 0.01 foot and is noted in the field notes. In addition, all depth to water level measurements are collected with a static water level indicator and are also recorded in the field notes, prior to purging and sampling any wells.

After water levels are collected and prior to sampling, if purging is to occur, each well is purged a minimum of three well casing volumes of water using pre-cleaned pumps (stack, peristaltic or Grundfos), or disposable bailers. Temperature, pH and electrical conductivity are measured a minimum of three times during the purging (additional parameters such as dissolved oxygen, oxidation reduction potential, turbidity may also be measured, depending on specific scope of work.). Purging continues until these parameters stabilize.

Groundwater samples are collected using disposable bailers. The water samples are transferred from the bailer into appropriate containers. Pre-preserved containers, supplied by analytical laboratories, are used. When pre-preserved containers are not available, the laboratory is instructed to preserve the sample as appropriate. Duplicate samples are collected for the laboratory to use in maintaining quality assurance/quality control standards, as directed by the scope of work. The samples are labeled to include the job number, sample identification, collection date and time, analysis, preservation (if any), and the sample collector's initials. The water samples are placed in a cooler, maintained at 4°C for transport to the laboratory. Once collected in the field, all samples are maintained under chain of custody until delivered to the laboratory.

The chain of custody document includes the job number, type of preservation, if any, analysis requested, sample identification, date and time collected, and the sample collector's name. The chain of custody is signed and dated (including time of transfer) by each person who receives or surrenders the samples, beginning with the field personnel and ending with the laboratory personnel.

A laboratory supplied trip blank accompanies each sampling set. The trip blank is analyzed for some or all of the same compounds as the groundwater samples.

As requested by Chevron Environmental Management Company, the purge water and decontamination water generated during sampling activities is transported by Clean Harbors Environmental Services to Evergreen Oil located in Newark, California.



GETTLER - RYAN INC.

WELL MONITORING/SAMPLING FIELD DATA SHEET

Client/Facility#: Chevron #206127
 Site Address: 2301-2337 Blanding Avenue
 City: Alameda, CA

Job Number: 386498
 Event Date: 11/19/13 (inclusive)
 Sampler: JA

Well ID: MW-1RA

Date Monitored: 11/19/13

Well Diameter: 2

Volume	3/4"= 0.02	1"= 0.04	2"= 0.17	3"= 0.38
Factor (VF)	4"= 0.66	5"= 1.02	6"= 1.50	12"= 5.80

Total Depth: 12.67 ft.

Depth to Water: 7.30 ft.

Check if water column is less than 0.50 ft.

5.37 xVF .17 = .91 x3 case volume = Estimated Purge Volume: 2.73 gal.

Depth to Water w/ 80% Recharge [(Height of Water Column x 0.20) + DTW]: 8.37

Purge Equipment:

Disposable Bailer X
 Stainless Steel Bailer _____
 Stack Pump _____
 Suction Pump _____
 Grundfos _____
 Peristaltic Pump _____
 QED Bladder Pump _____
 Other: _____

Sampling Equipment:

Disposable Bailer X
 Pressure Bailer _____
 Metal Filters _____
 Peristaltic Pump _____
 QED Bladder Pump _____
 Other: _____

Time Started: _____ (2400 hrs)
 Time Completed: _____ (2400 hrs)
 Depth to Product: _____ ft
 Depth to Water: _____ ft
 Hydrocarbon Thickness: _____ ft
 Visual Confirmation/Description: _____
 Skimmer / Absorbant Sock (circle one)
 Amt Removed from Skimmer: _____ gal
 Amt Removed from Well: _____ gal
 Water Removed: _____

Start Time (purge): 1345
 Sample Time/Date: 1420 / 11/19/13
 Approx. Flow Rate: _____ gpm.
 Did well de-water? No If yes, Time: _____

Weather Conditions: clear
 Water Color: clear Odor: YIB
 Sediment Description: L.S.M
 Volume: _____ gal. DTW @ Sampling: 8.20

Time (2400 hr.)	Volume (gal.)	pH	Conductivity (µmhos/cm - <u>US</u>)	Temperature (°C / F)	D.O. (mg/L)	ORP (mV)
<u>1347</u>	<u>1</u>	<u>7.84</u>	<u>634</u>	<u>18.7</u>	_____	_____
<u>1349</u>	<u>2</u>	<u>7.80</u>	<u>621</u>	<u>18.6</u>	_____	_____
<u>1351</u>	<u>2.5</u>	<u>7.72</u>	<u>608</u>	<u>18.4</u>	_____	_____

LABORATORY INFORMATION

SAMPLE ID	(#) CONTAINER	REFRIG.	PRESERV. TYPE	LABORATORY	ANALYSES
<u>MW-1RA</u>	<u>6</u> x voa vial	YES	HCL	LANCASTER	TPH-GRO(8015)/BTEX(8260)
	<u>2</u> x 1 liter ambers	YES	NP	LANCASTER	TPH-DRO w/sgc COLUMN/TPH-DRO (8015)

COMMENTS: _____

Add/Replaced Lock: _____ Add/Replaced Plug: _____ Add/Replaced Bolt: _____



GETTLER - RYAN INC.

WELL MONITORING/SAMPLING FIELD DATA SHEET

Client/Facility#: Chevron #206127
 Site Address: 2301-2337 Blanding Avenue
 City: Alameda, CA

Job Number: 386498
 Event Date: 1/19/13 (inclusive)
 Sampler: SV

Well ID: MW-1RB

Date Monitored: 1/19/13

Well Diameter: 2

Volume	3/4"= 0.02	1"= 0.04	2"= 0.17	3"= 0.38
Factor (VF)	4"= 0.66	5"= 1.02	6"= 1.50	12"= 5.80

Total Depth: 19.92 ft.

Depth to Water: 8.65 ft. Check if water column is less than 0.50 ft.

11.27 xVF .17 = 1.91 x3 case volume = Estimated Purge Volume: 5.74 gal.

Depth to Water w/ 80% Recharge [(Height of Water Column x 0.20) + DTW]: 10.90

Purge Equipment:

Disposable Bailer X
 Stainless Steel Bailer _____
 Stack Pump _____
 Suction Pump _____
 Grundfos _____
 Peristaltic Pump _____
 QED Bladder Pump _____
 Other: _____

Sampling Equipment:

Disposable Bailer X
 Pressure Bailer _____
 Metal Filters _____
 Peristaltic Pump _____
 QED Bladder Pump _____
 Other: _____

Time Started: _____ (2400 hrs)
 Time Completed: _____ (2400 hrs)
 Depth to Product: _____ ft
 Depth to Water: _____ ft
 Hydrocarbon Thickness: _____ ft
 Visual Confirmation/Description: _____
 Skimmer / Absorbant Sock (circle one)
 Amt Removed from Skimmer: _____ gal
 Amt Removed from Well: _____ gal
 Water Removed: _____

Start Time (purge): 1255
 Sample Time/Date: 1330 / 1/19/13
 Approx. Flow Rate: _____ gpm.
 Did well de-water? NO If yes, Time: _____

Weather Conditions: Clean
 Water Color: cloudy Odor: Y10
 Sediment Description: L. H. H.
 Volume: _____ gal. DTW @ Sampling: 10.31

Time (2400 hr.)	Volume (gal.)	pH	Conductivity (µmhos/cm - µS)	Temperature (C / F)	D.O. (mg/L)	ORP (mV)
<u>1300</u>	<u>2</u>	<u>7.62</u>	<u>551</u>	<u>18.6</u>		
<u>1305</u>	<u>4</u>	<u>7.38</u>	<u>527</u>	<u>18.5</u>		
<u>1310</u>	<u>6</u>	<u>7.30</u>	<u>509</u>	<u>18.2</u>		

LABORATORY INFORMATION

SAMPLE ID	(#) CONTAINER	REFRIG.	PRESERV. TYPE	LABORATORY	ANALYSES
<u>MW-1RB</u>	<u>6</u> x voa vial	YES	HCL	LANCASTER	TPH-GRO(8015)/BTEX(8260)
	<u>2</u> x 1 liter ambers	YES	NP	LANCASTER	TPH-DRO w/sgc COLUMN/TPH-DRO (8015)

COMMENTS: _____

Add/Replaced Lock: _____ Add/Replaced Plug: _____ Add/Replaced Bolt: _____



GETTLER-RYAN INC.

WELL MONITORING/SAMPLING FIELD DATA SHEET

Client/Facility#: Chevron #206127
 Site Address: 2301-2337 Blanding Avenue
 City: Alameda, CA

Job Number: 386498
 Event Date: 1/19/13 (inclusive)
 Sampler: JH

Well ID: MW-2
 Well Diameter: 2
 Total Depth: 15.58 ft.
 Depth to Water: 3.45 ft.
12.13 xVF .17 = 2.06

Date Monitored: 1/19/13

Volume	3/4"= 0.02	1"= 0.04	2"= 0.17	3"= 0.38
Factor (VF)	4"= 0.66	5"= 1.02	6"= 1.50	12"= 5.80

Check if water column is less than 0.50 ft.

Depth to Water w/ 80% Recharge [(Height of Water Column x 0.20) + DTW]: 5.87

x3 case volume = Estimated Purge Volume: 6.18 gal.

Purge Equipment:

Disposable Bailer X
 Stainless Steel Bailer _____
 Stack Pump _____
 Suction Pump _____
 Grundfos _____
 Peristaltic Pump _____
 QED Bladder Pump _____
 Other: _____

Sampling Equipment:

Disposable Bailer X
 Pressure Bailer _____
 Metal Filters _____
 Peristaltic Pump _____
 QED Bladder Pump _____
 Other: _____

Time Started: _____ (2400 hrs)
 Time Completed: _____ (2400 hrs)
 Depth to Product: _____ ft
 Depth to Water: _____ ft
 Hydrocarbon Thickness: _____ ft
 Visual Confirmation/Description: _____
 Skimmer / Absorbant Sock (circle one)
 Amt Removed from Skimmer: _____ gal
 Amt Removed from Well: _____ gal
 Water Removed: _____

Start Time (purge): 0820
 Sample Time/Date: 0900 / 1/19/13
 Approx. Flow Rate: _____ gpm.
 Did well de-water? No If yes, Time: _____

Weather Conditions: clear
 Water Color: cloudy Odor: Y10
 Sediment Description: L.S.H
 Volume: _____ gal. DTW @ Sampling: 4.59

Time (2400 hr.)	Volume (gal.)	pH	Conductivity (µmhos/cm - 45)	Temperature (°F)	D.O. (mg/L)	ORP (mV)
<u>0825</u>	<u>2</u>	<u>7.89</u>	<u>419</u>	<u>18.3</u>	_____	_____
<u>0831</u>	<u>4</u>	<u>7.80</u>	<u>432</u>	<u>18.1</u>	_____	_____
<u>0837</u>	<u>6</u>	<u>7.63</u>	<u>470</u>	<u>18.6</u>	_____	_____

LABORATORY INFORMATION

SAMPLE ID	(#) CONTAINER	REFRIG.	PRESERV. TYPE	LABORATORY	ANALYSES
MW-2	6 x voa vial	YES	HCL	LANCASTER	TPH-GRO(8015)/BTEX(8260)
	2 x 1 liter ambers	YES	NP	LANCASTER	TPH-DRO w/sgc COLUMN/TPH-DRO (8015)

COMMENTS: 12" cmc

Add/Replaced Lock: _____ Add/Replaced Plug: _____ Add/Replaced Bolt: _____



GETTLER - RYAN INC.

WELL MONITORING/SAMPLING FIELD DATA SHEET

Client/Facility#: Chevron #206127
 Site Address: 2301-2337 Blanding Avenue
 City: Alameda, CA

Job Number: 386498
 Event Date: 1/19/13 (inclusive)
 Sampler: JH

Well ID: MW-3
 Well Diameter: 2
 Total Depth: 17.86 ft.
 Depth to Water: 4.52 ft.

Date Monitored: 1/19/13

Volume	3/4"= 0.02	1"= 0.04	2"= 0.17	3"= 0.38
Factor (VF)	4"= 0.66	5"= 1.02	6"= 1.50	12"= 5.80

Check if water column is less than 0.50 ft.

13.34 xVF .17 = 2.26 x3 case volume = Estimated Purge Volume: 6.80 gal.

Depth to Water w/ 80% Recharge [(Height of Water Column x 0.20) + DTW]: 7.18

Purge Equipment:

Disposable Bailer X
 Stainless Steel Bailer _____
 Stack Pump _____
 Suction Pump _____
 Grundfos _____
 Peristaltic Pump _____
 QED Bladder Pump _____
 Other: _____

Sampling Equipment:

Disposable Bailer X
 Pressure Bailer _____
 Metal Filters _____
 Peristaltic Pump _____
 QED Bladder Pump _____
 Other: _____

Time Started: _____ (2400 hrs)
 Time Completed: _____ (2400 hrs)
 Depth to Product: _____ ft
 Depth to Water: _____ ft
 Hydrocarbon Thickness: _____ ft
 Visual Confirmation/Description: _____
 Skimmer / Absorbant Sock (circle one)
 Amt Removed from Skimmer: _____ gal
 Amt Removed from Well: _____ gal
 Water Removed: _____

Start Time (purge): 0920
 Sample Time/Date: 1000 / 1/19/13
 Approx. Flow Rate: ~ gpm.
 Did well de-water? NO If yes, Time: _____

Weather Conditions: Clear
 Water Color: clear Odor: Y10
 Sediment Description: L. 10/10
 Volume: _____ gal. DTW @ Sampling: 5.97

Time (2400 hr.)	Volume (gal.)	pH	Conductivity (µmhos/cm (µS))	Temperature (C / F)	D.O. (mg/L)	ORP (mV)
<u>0926</u>	<u>2</u>	<u>7.80</u>	<u>582</u>	<u>17.9</u>		
<u>0932</u>	<u>4</u>	<u>7.47</u>	<u>620</u>	<u>17.7</u>		
<u>0940</u>	<u>7</u>	<u>7.35</u>	<u>645</u>	<u>17.4</u>		

LABORATORY INFORMATION

SAMPLE ID	(#) CONTAINER	REFRIG.	PRESERV. TYPE	LABORATORY	ANALYSES
<u>MW-3</u>	<u>6</u> x voa vial	YES	HCL	LANCASTER	TPH-GRO(8015)/BTEX(8260)
	<u>2</u> x 1 liter ambers	YES	NP	LANCASTER	TPH-DRO w/sgc COLUMN/TPH-DRO (8015)

COMMENTS: _____

Add/Replaced Lock: _____ Add/Replaced Plug: _____ Add/Replaced Bolt: _____



GETTLER-RYAN INC.

WELL MONITORING/SAMPLING FIELD DATA SHEET

Client/Facility#: Chevron #206127
 Site Address: 2301-2337 Blanding Avenue
 City: Alameda, CA

Job Number: 386498
 Event Date: 1/15/13 (inclusive)
 Sampler: SH

Well ID: MW-4
 Well Diameter: 2
 Total Depth: 20.17 ft.
 Depth to Water: 6.78 ft.

Date Monitored: 1/15/13

Volume Factor (VF)	3/4"= 0.02	1"= 0.04	2"= 0.17	3"= 0.38
	4"= 0.66	5"= 1.02	6"= 1.50	12"= 5.80

Depth to Water Check if water column is less than 0.50 ft.
 $13.39 \times VF .17 = 2.27$ x3 case volume = Estimated Purge Volume: 6.82 gal.
 Depth to Water w/ 80% Recharge [(Height of Water Column x 0.20) + DTW]: 9.45

Purge Equipment:

Disposable Bailer X
 Stainless Steel Bailer _____
 Stack Pump _____
 Suction Pump _____
 Grundfos _____
 Peristaltic Pump _____
 QED Bladder Pump _____
 Other: _____

Sampling Equipment:

Disposable Bailer X
 Pressure Bailer _____
 Metal Filters _____
 Peristaltic Pump _____
 QED Bladder Pump _____
 Other: _____

Time Started: _____ (2400 hrs)
 Time Completed: _____ (2400 hrs)
 Depth to Product: _____ ft
 Depth to Water: _____ ft
 Hydrocarbon Thickness: _____ ft
 Visual Confirmation/Description: _____
 Skimmer / Absorbant Sock (circle one)
 Amt Removed from Skimmer: _____ gal
 Amt Removed from Well: _____ gal
 Water Removed: _____

Start Time (purge): 1615 Weather Conditions: clear
 Sample Time/Date: 1050 1/15/13 Water Color: cloudy Odor: Y10
 Approx. Flow Rate: _____ gpm. Sediment Description: low
 Did well de-water? no If yes, Time: _____ Volume: _____ gal. DTW @ Sampling: 8.20

Time (2400 hr.)	Volume (gal.)	pH	Conductivity (µmhos/cm - µS)	Temperature (C / F)	D.O. (mg/L)	ORP (mV)
<u>1020</u>	<u>2</u>	<u>7.60</u>	<u>625</u>	<u>18.1</u>		
<u>1025</u>	<u>4</u>	<u>7.42</u>	<u>631</u>	<u>18.0</u>		
<u>1032</u>	<u>7</u>	<u>7.35</u>	<u>653</u>	<u>17.7</u>		

LABORATORY INFORMATION

SAMPLE ID	(#) CONTAINER	REFRIG.	PRESERV. TYPE	LABORATORY	ANALYSES
<u>MW-4</u>	<u>6</u> x voa vial	YES	HCL	LANCASTER	TPH-GRO(8015)/BTEX(8260)
	<u>2</u> x 1 liter ambers	YES	NP	LANCASTER	TPH-DRO w/sgc COLUMN/TPH-DRO (8015)

COMMENTS: _____

Add/Replaced Lock: _____ Add/Replaced Plug: _____ Add/Replaced Bolt: _____



GETTLER-RYAN INC.

WELL MONITORING/SAMPLING FIELD DATA SHEET

Client/Facility#: Chevron #206127
 Site Address: 2301-2337 Blanding Avenue
 City: Alameda, CA

Job Number: 386498
 Event Date: 1/19/13 (inclusive)
 Sampler: JH

Well ID: MW-5
 Well Diameter: 2
 Total Depth: 17.90 ft.
 Depth to Water: 5.38 ft.
12.52 xVF .17 = 2.12

Date Monitored: 1/19/13

Volume	3/4"= 0.02	1"= 0.04	2"= 0.17	3"= 0.38
Factor (VF)	4"= 0.66	5"= 1.02	6"= 1.50	12"= 5.80

Check if water column is less than 0.50 ft.

Depth to Water w/ 80% Recharge [(Height of Water Column x 0.20) + DTW]: 7.88 gal.

Purge Equipment:

Disposable Bailer X
 Stainless Steel Bailer _____
 Stack Pump _____
 Suction Pump _____
 Grundfos _____
 Peristaltic Pump _____
 QED Bladder Pump _____
 Other: _____

Sampling Equipment:

Disposable Bailer X
 Pressure Bailer _____
 Metal Filters _____
 Peristaltic Pump _____
 QED Bladder Pump _____
 Other: _____

Time Started: _____ (2400 hrs)
 Time Completed: _____ (2400 hrs)
 Depth to Product: _____ ft
 Depth to Water: _____ ft
 Hydrocarbon Thickness: _____ ft
 Visual Confirmation/Description: _____
 Skimmer / Absorbant Sock (circle one)
 Amt Removed from Skimmer: _____ gal
 Amt Removed from Well: _____ gal
 Water Removed: _____

Start Time (purge): 1110
 Sample Time/Date: 1140 / 1/19/13
 Approx. Flow Rate: — gpm.
 Did well de-water? No If yes, Time: _____

Weather Conditions: Clear
 Water Color: cloudy Odor: Y10
 Sediment Description: L.S.H.
 Volume: _____ gal. DTW @ Sampling: 7.02

Time (2400 hr.)	Volume (gal.)	pH	Conductivity (µmhos/cm - (S))	Temperature (C / F)	D.O. (mg/L)	ORP (mV)
<u>1115</u>	<u>2</u>	<u>7.42</u>	<u>583</u>	<u>18.2</u>		
<u>1120</u>	<u>4</u>	<u>7.37</u>	<u>595</u>	<u>18.1</u>		
<u>1125</u>	<u>6</u>	<u>7.49</u>	<u>620</u>	<u>18.0</u>		

LABORATORY INFORMATION

SAMPLE ID	(#) CONTAINER	REFRIG.	PRESERV. TYPE	LABORATORY	ANALYSES
<u>MW-5</u>	<u>6</u> x voa vial	YES	HCL	LANCASTER	TPH-GRO(8015)/BTEX(8260)
	<u>2</u> x 1 liter ambers	YES	NP	LANCASTER	TPH-DRO w/sgc COLUMN/TPH-DRO (8015)

COMMENTS:

Add/Replaced Lock: _____ Add/Replaced Plug: _____ Add/Replaced Bolt: _____



GETTLER-RYAN INC.

WELL MONITORING/SAMPLING FIELD DATA SHEET

Client/Facility#: Chevron #206127
 Site Address: 2301-2337 Blanding Avenue
 City: Alameda, CA

Job Number: 386498
 Event Date: 1/19/13 (inclusive)
 Sampler: JH

Well ID: MW-6
 Well Diameter: 2
 Total Depth: 20.62 ft.
 Depth to Water: 8.92 ft.
11.10 xVF .17 = 1.88

Date Monitored: 1/19/13

Volume	3/4"= 0.02	1"= 0.04	2"= 0.17	3"= 0.38
Factor (VF)	4"= 0.66	5"= 1.02	6"= 1.50	12"= 5.80

Check if water column is less than 0.50 ft.

Depth to Water w/ 80% Recharge [(Height of Water Column x 0.20) + DTW]: 11.14

Purge Equipment:

Disposable Bailer X
 Stainless Steel Bailer _____
 Stack Pump _____
 Suction Pump _____
 Grundfos _____
 Peristaltic Pump _____
 QED Bladder Pump _____
 Other: _____

Sampling Equipment:

Disposable Bailer X
 Pressure Bailer _____
 Metal Filters _____
 Peristaltic Pump _____
 QED Bladder Pump _____
 Other: _____

Time Started: _____ (2400 hrs)
 Time Completed: _____ (2400 hrs)
 Depth to Product: _____ ft
 Depth to Water: _____ ft
 Hydrocarbon Thickness: _____ ft
 Visual Confirmation/Description: _____
 Skimmer / Absorbant Sock (circle one)
 Amt Removed from Skimmer: _____ gal
 Amt Removed from Well: _____ gal
 Water Removed: _____

Start Time (purge): 1200
 Sample Time/Date: 1240 / 1/19/13
 Approx. Flow Rate: _____ gpm.
 Did well de-water? NO If yes, Time: _____

Weather Conditions: Clear
 Water Color: Clay Odor: Y/N
 Sediment Description: L.O.H.
 Volume: _____ gal. DTW @ Sampling: 10.64

Time (2400 hr.)	Volume (gal.)	pH	Conductivity (µmhos/cm - µS)	Temperature (C / F)	D.O. (mg/L)	ORP (mV)
<u>1205</u>	<u>2</u>	<u>7.80</u>	<u>670</u>	<u>18.2</u>	_____	_____
<u>1210</u>	<u>4</u>	<u>7.57</u>	<u>649</u>	<u>18.1</u>	_____	_____
<u>1214</u>	<u>5.5</u>	<u>7.43</u>	<u>624</u>	<u>18.0</u>	_____	_____

LABORATORY INFORMATION

SAMPLE ID	(#) CONTAINER	REFRIG.	PRESERV. TYPE	LABORATORY	ANALYSES
MW-6	6 x voa vial	YES	HCL	LANCASTER	TPH-GRO(8015)/BTEX(8260)
	2x 1 liter ambers	YES	NP	LANCASTER	TPH-DRO w/sgc COLUMN/TPH-DRO (8015)

COMMENTS: _____

Add/Replaced Lock: _____ Add/Replaced Plug: _____ Add/Replaced Bolt: _____

Chevron California Region Analysis Request/Chain of Custody



Please forward the lab results directly to the Lead Consultant and cc: G-R.

For Lancaster Laboratories use only

Acct. #: _____ Sample #: _____ Group #: **010809**

Facility #: <u>SS#206127-OML G-R#386498 Global ID#T06019744728</u> Site Address: <u>2301-2337 BLANDING AVENUE, ALAMEDA, CA</u> Chevron PM: <u>MB</u> Lead Consultant: <u>CRASB Silva</u> Consultant/Office: <u>G-R, Inc., 6747 Sierra Court, Suite J, Dublin, CA 94568</u> Consultant Prj. Mgr.: <u>Deanna L. Harding (deanna@grinc.com)</u> Consultant Phone #: <u>925-551-7555</u> Fax #: <u>925-551-7899</u> Sampler: <u>Jim Hagan</u>				Matrix <input type="checkbox"/> Potable <input type="checkbox"/> NPDES <input type="checkbox"/> Soil <input type="checkbox"/> Water <input type="checkbox"/> Oil <input type="checkbox"/> Air		Analyses Requested										Preservative Codes H = HCl T = Thiosulfate N = HNO ₃ B = NaOH S = H ₂ SO ₄ O = Other <input type="checkbox"/> J value reporting needed <input checked="" type="checkbox"/> Must meet lowest detection limits possible for 8260 compounds 8021 MTBE Confirmation <input type="checkbox"/> Confirm highest hit by 8260 <input type="checkbox"/> Confirm all hits by 8260 <input type="checkbox"/> Run ___ oxy's on highest hit <input type="checkbox"/> Run ___ oxy's on all hits						
Sample Identification				Date Collected		Time Collected		Grab	Composite	Soil	Water	Oil <input type="checkbox"/> Air	Total Number of Containers	BTEX + MDEP 8260 <input type="checkbox"/> 8021 <input type="checkbox"/>	TPH 8015 MOD GRO	TPH 8015 MOD DRO <input checked="" type="checkbox"/> Silica Gel Cleanup	8260 Full Scan <u>7.2H-DRO (2013)</u>	Oxygenates	Total Lead Method	Dissolved Lead Method	Comments / Remarks TPH-DRO WITH SILICA GEL REQUESTING 10 GRAM COLUMN CLEAN-UP WITH CAPRIC ACID REVERSE SURROGATE	
OA				11/9/13		1420		X	X	X	X	X	X	X	X	X	X	X	X	X		
MW-1RA						1330		X	X	X	X	X	X	X	X	X	X	X	X	X		
MW-1RB						0900		X	X	X	X	X	X	X	X	X	X	X	X	X		
MW-2						1000		X	X	X	X	X	X	X	X	X	X	X	X	X		
MW-3						1050		X	X	X	X	X	X	X	X	X	X	X	X	X		
MW-4						1140		X	X	X	X	X	X	X	X	X	X	X	X	X		
MW-5						1240		X	X	X	X	X	X	X	X	X	X	X	X	X		
MW-6						1240		X	X	X	X	X	X	X	X	X	X	X	X	X		
Turnaround Time Requested (TAT) (please circle) STD. TAT 72 hour 48 hour 24 hour 4 day 5 day				Relinquished by: _____ Date: <u>11/13/13</u> Time: <u>1500</u>				Received by: <u>LEITLER-RYAN FRIDGEC</u> Date: <u>12/13/13</u> Time: <u>7:10</u>				Relinquished by: _____ Date: <u>01-21-13</u> Time: <u>1150</u>				Received by: <u>[Signature]</u> Date: <u>12/13</u> Time: <u>1150</u>						
Data Package Options (please circle if required) QC Summary Type I - Full EDF/EDD Type VI (Raw Data) <input type="checkbox"/> Coelt Deliverable not needed WIP (RWQCB) Disk				Relinquished by: _____ Date: _____ Time: _____				Received by: _____ Date: _____ Time: _____				Relinquished by Commercial Carrier: UPS FedEx Other _____				Received by: _____ Date: _____ Time: _____						
Temperature Upon Receipt _____ C°				Custody Seals Intact? Yes No				_____				_____										

ATTACHMENT B

LABORATORY ANALYTICAL REPORT

ANALYTICAL RESULTS

Prepared by:

Lancaster Laboratories
2425 New Holland Pike
Lancaster, PA 17605-2425

Prepared for:

Chevron
L4310
6001 Bollinger Canyon Rd.
San Ramon CA 94583

February 07, 2013

Project: 206127

Submittal Date: 01/22/2013
Group Number: 1363813
PO Number: 0015115966
Release Number: BAUER
State of Sample Origin: CA

Client Sample Description

QA-T-130119 NA Water
MW-1RA-W-130119 Grab Water
MW-1RB-W-130119 Grab Water
MW-2-W-130119 Grab Water
MW-3-W-130119 Grab Water
MW-4-W-130119 Grab Water
MW-5-W-130119 Grab Water
MW-6-W-130119 Grab Water

Lancaster Labs (LLD)

6930772
6930773
6930774
6930775
6930776
6930777
6930778
6930779

The specific methodologies used in obtaining the enclosed analytical results are indicated on the Laboratory Sample Analysis Record.

ELECTRONIC COPY TO
ELECTRONIC COPY TO
ELECTRONIC COPY TO
ELECTRONIC COPY TO
ELECTRONIC COPY TO

CRA c/o Gettler-Ryan
Chevron c/o CRA
Chevron
CRA

Attn: Rachelle Munoz
Attn: Report Contact
Attn: Anna Avina
Attn: Brian Silva

Respectfully Submitted,

Jill M. Parker

Jill M. Parker
Senior Specialist

(717) 556-7262

Sample Description: QA-T-130119 NA Water
 Facility# 206127 Job# 386498 GRD
 2301-2307 Blanding Ave-Ala T06019744728 QA

LLI Sample # WW 6930772
 LLI Group # 1363813
 Account # 10904

Project Name: 206127

Collected: 01/19/2013

Chevron

Submitted: 01/22/2013 21:11

L4310

Reported: 02/07/2013 21:03

6001 Bollinger Canyon Rd.
 San Ramon CA 94583

BAAQA

CAT No.	Analysis Name	CAS Number	As Received Result	As Received Method Detection Limit	Dilution Factor
GC/MS Volatiles SW-846 8260B					
10943	Benzene	71-43-2	N.D.	0.5	1
10943	Ethylbenzene	100-41-4	N.D.	0.5	1
10943	Toluene	108-88-3	N.D.	0.5	1
10943	Xylene (Total)	1330-20-7	N.D.	0.5	1
GC Volatiles SW-846 8015B					
01728	TPH-GRO N. CA water C6-C12	n.a.	N.D.	50	1

General Sample Comments

State of California Lab Certification No. 2501

All QC is compliant unless otherwise noted. Please refer to the Quality Control Summary for overall QC performance data and associated samples.

Laboratory Sample Analysis Record

CAT No.	Analysis Name	Method	Trial#	Batch#	Analysis Date and Time	Analyst	Dilution Factor
10943	BTEX 8260B Water	SW-846 8260B	1	P130252AA	01/25/2013 10:10	Anita M Dale	1
01163	GC/MS VOA Water Prep	SW-846 5030B	1	P130252AA	01/25/2013 10:10	Anita M Dale	1
01728	TPH-GRO N. CA water C6-C12	SW-846 8015B	1	13024A20A	01/24/2013 20:04	Catherine J Schwarz	1
01146	GC VOA Water Prep	SW-846 5030B	1	13024A20A	01/24/2013 20:04	Catherine J Schwarz	1

Sample Description: MW-1RA-W-130119 Grab Water
Facility# 206127 **Job#** 386498 GRD
 2301-2307 Blanding Ave-Ala T06019744728 MW-1RA

LLI Sample # WW 6930773
LLI Group # 1363813
Account # 10904

Project Name: 206127

Collected: 01/19/2013 14:20 by JH Chevron
 L4310
 Submitted: 01/22/2013 21:11 6001 Bollinger Canyon Rd.
 Reported: 02/07/2013 21:03 San Ramon CA 94583

BAA1A

CAT No.	Analysis Name	CAS Number	As Received Result	As Received Method Detection Limit	Dilution Factor
GC/MS Volatiles					
		SW-846 8260B	ug/l	ug/l	
10943	Benzene	71-43-2	180	5	10
10943	Ethylbenzene	100-41-4	N.D.	5	10
10943	Toluene	108-88-3	N.D.	5	10
10943	Xylene (Total)	1330-20-7	N.D.	5	10
GC Volatiles					
		SW-846 8015B	ug/l	ug/l	
01728	TPH-GRO N. CA water C6-C12	n.a.	1,500	50	1
GC Petroleum Hydrocarbons					
		SW-846 8015B	ug/l	ug/l	
08269	TPH-DRO water C10-C28	n.a.	3,000	50	1
GC Petroleum Hydrocarbons w/Si					
		SW-846 8015B	ug/l	ug/l	
02216	TPH-DRO water C10-C28 w/Si Gel	n.a.	270	50	1
	The reverse surrogate, capric acid, is present at <1%.				

General Sample Comments

State of California Lab Certification No. 2501

All QC is compliant unless otherwise noted. Please refer to the Quality Control Summary for overall QC performance data and associated samples.

Laboratory Sample Analysis Record

CAT No.	Analysis Name	Method	Trial#	Batch#	Analysis Date and Time	Analyst	Dilution Factor
10943	BTEX 8260B Water	SW-846 8260B	1	P130244AA	01/25/2013 01:59	Brett W Kenyon	10
01163	GC/MS VOA Water Prep	SW-846 5030B	1	P130244AA	01/25/2013 01:59	Brett W Kenyon	10
01728	TPH-GRO N. CA water C6-C12	SW-846 8015B	1	13024A20A	01/24/2013 21:54	Catherine J Schwarz	1
01146	GC VOA Water Prep	SW-846 5030B	1	13024A20A	01/24/2013 21:54	Catherine J Schwarz	1
08269	TPH-DRO water C10-C28	SW-846 8015B	1	130240017A	01/26/2013 10:43	Christine E Dolman	1
02216	TPH-DRO water C10-C28 w/Si Gel	SW-846 8015B	1	130240018A	02/01/2013 01:13	Artie D Kunselman	1
11172	DRO by 8015 w/ Silica Gel Ext	SW-846 3510C	1	130240018A	01/24/2013 22:00	Elaine F Stoltzfus	1
07003	Extraction - DRO (Waters)	SW-846 3510C	1	130240017A	01/24/2013 22:00	Elaine F Stoltzfus	1

Sample Description: MW-1RB-W-130119 Grab Water
Facility# 206127 **Job#** 386498 GRD
 2301-2307 Blanding Ave-Ala T06019744728 MW-1RB

LLI Sample # WW 6930774
LLI Group # 1363813
Account # 10904

Project Name: 206127

Collected: 01/19/2013 13:30 by JH

Chevron

L4310

Submitted: 01/22/2013 21:11

6001 Bollinger Canyon Rd.

Reported: 02/07/2013 21:03

San Ramon CA 94583

BAA1B

CAT No.	Analysis Name	CAS Number	As Received Result	As Received Method Detection Limit	Dilution Factor
GC/MS Volatiles					
		SW-846 8260B	ug/l	ug/l	
10943	Benzene	71-43-2	2	0.5	1
10943	Ethylbenzene	100-41-4	N.D.	0.5	1
10943	Toluene	108-88-3	N.D.	0.5	1
10943	Xylene (Total)	1330-20-7	N.D.	0.5	1
GC Volatiles					
		SW-846 8015B	ug/l	ug/l	
01728	TPH-GRO N. CA water C6-C12	n.a.	200	50	1
GC Petroleum Hydrocarbons					
		SW-846 8015B	ug/l	ug/l	
08269	TPH-DRO water C10-C28	n.a.	2,000	50	1
GC Petroleum Hydrocarbons w/Si					
		SW-846 8015B	ug/l	ug/l	
02216	TPH-DRO water C10-C28 w/Si Gel	n.a.	62	50	1
The reverse surrogate, capric acid, is present at <1%.					
The blank associated with this sample exhibited a late-eluting contamination pattern. This sample also contains a similar late-eluting pattern. No further action was taken.					

General Sample Comments

State of California Lab Certification No. 2501

All QC is compliant unless otherwise noted. Please refer to the Quality Control Summary for overall QC performance data and associated samples.

Laboratory Sample Analysis Record

CAT No.	Analysis Name	Method	Trial#	Batch#	Analysis Date and Time	Analyst	Dilution Factor
10943	BTEX 8260B Water	SW-846 8260B	1	P130244AA	01/24/2013 23:40	Brett W Kenyon	1
01163	GC/MS VOA Water Prep	SW-846 5030B	1	P130244AA	01/24/2013 23:40	Brett W Kenyon	1
01728	TPH-GRO N. CA water C6-C12	SW-846 8015B	1	13024A20A	01/24/2013 22:16	Catherine J Schwarz	1
01146	GC VOA Water Prep	SW-846 5030B	1	13024A20A	01/24/2013 22:16	Catherine J Schwarz	1
08269	TPH-DRO water C10-C28	SW-846 8015B	1	130240017A	01/26/2013 09:08	Christine E Dolman	1
02216	TPH-DRO water C10-C28 w/Si Gel	SW-846 8015B	2	130240018A	02/01/2013 01:36	Christine E Dolman	1
11172	DRO by 8015 w/ Silica Gel Ext	SW-846 3510C	1	130240018A	01/24/2013 22:00	Elaine F Stoltzfus	1
07003	Extraction - DRO (Waters)	SW-846 3510C	1	130240017A	01/24/2013 22:00	Elaine F Stoltzfus	1

Sample Description: MW-2-W-130119 Grab Water
Facility# 206127 **Job#** 386498 GRD
 2301-2307 Blanding Ave-Ala T06019744728 MW-2

LLI Sample # WW 6930775
LLI Group # 1363813
Account # 10904

Project Name: 206127

Collected: 01/19/2013 09:00 by JH Chevron
 L4310
 Submitted: 01/22/2013 21:11 6001 Bollinger Canyon Rd.
 Reported: 02/07/2013 21:03 San Ramon CA 94583

BAAM2

CAT No.	Analysis Name	CAS Number	As Received Result	As Received Method Detection Limit	Dilution Factor
GC/MS Volatiles					
	SW-846 8260B		ug/l	ug/l	
10943	Benzene	71-43-2	N.D.	0.5	1
10943	Ethylbenzene	100-41-4	N.D.	0.5	1
10943	Toluene	108-88-3	N.D.	0.5	1
10943	Xylene (Total)	1330-20-7	N.D.	0.5	1
GC Volatiles					
	SW-846 8015B		ug/l	ug/l	
01728	TPH-GRO N. CA water C6-C12	n.a.	N.D.	50	1
GC Petroleum Hydrocarbons					
	SW-846 8015B		ug/l	ug/l	
08269	TPH-DRO water C10-C28	n.a.	N.D.	50	1
GC Petroleum Hydrocarbons w/Si					
	SW-846 8015B		ug/l	ug/l	
02216	TPH-DRO water C10-C28 w/Si Gel	n.a.	N.D.	50	1
The reverse surrogate, capric acid, is present at <1%.					

General Sample Comments

State of California Lab Certification No. 2501

All QC is compliant unless otherwise noted. Please refer to the Quality Control Summary for overall QC performance data and associated samples.

Laboratory Sample Analysis Record

CAT No.	Analysis Name	Method	Trial#	Batch#	Analysis Date and Time	Analyst	Dilution Factor
10943	BTEX 8260B Water	SW-846 8260B	1	P130244AA	01/25/2013 02:26	Brett W Kenyon	1
01163	GC/MS VOA Water Prep	SW-846 5030B	1	P130244AA	01/25/2013 02:26	Brett W Kenyon	1
01728	TPH-GRO N. CA water C6-C12	SW-846 8015B	1	13024A20A	01/24/2013 22:38	Catherine J Schwarz	1
01146	GC VOA Water Prep	SW-846 5030B	1	13024A20A	01/24/2013 22:38	Catherine J Schwarz	1
08269	TPH-DRO water C10-C28	SW-846 8015B	1	130240017A	01/26/2013 04:23	Christine E Dolman	1
02216	TPH-DRO water C10-C28 w/Si Gel	SW-846 8015B	1	130240018A	02/01/2013 01:59	Artie D Kunselman	1
11172	DRO by 8015 w/ Silica Gel Ext	SW-846 3510C	1	130240018A	01/24/2013 22:00	Elaine F Stoltzfus	1
07003	Extraction - DRO (Waters)	SW-846 3510C	1	130240017A	01/24/2013 22:00	Elaine F Stoltzfus	1

Sample Description: MW-3-W-130119 Grab Water
Facility# 206127 Job# 386498 GRD
2301-2307 Blanding Ave-Ala T06019744728 MW-3

LLI Sample # WW 6930776
LLI Group # 1363813
Account # 10904

Project Name: 206127

Collected: 01/19/2013 10:00 by JH Chevron
 Submitted: 01/22/2013 21:11 L4310
 Reported: 02/07/2013 21:03 6001 Bollinger Canyon Rd.
 San Ramon CA 94583

BAAM3

CAT No.	Analysis Name	CAS Number	As Received Result	As Received Method Detection Limit	Dilution Factor
GC/MS Volatiles SW-846 8260B					
10943	Benzene	71-43-2	N.D.	0.5	1
10943	Ethylbenzene	100-41-4	N.D.	0.5	1
10943	Toluene	108-88-3	N.D.	0.5	1
10943	Xylene (Total)	1330-20-7	N.D.	0.5	1
GC Volatiles SW-846 8015B					
01728	TPH-GRO N. CA water C6-C12	n.a.	69	50	1
GC Petroleum SW-846 8015B					
Hydrocarbons					
08269	TPH-DRO water C10-C28	n.a.	1,600	50	1
GC Petroleum SW-846 8015B					
Hydrocarbons w/Si					
02216	TPH-DRO water C10-C28 w/Si Gel	n.a.	N.D.	50	1
The reverse surrogate, capric acid, is present at <1%.					
The blank associated with this sample exhibited a late-eluting contamination pattern. This sample also contains a similar late-eluting pattern. No further action was taken.					

General Sample Comments

State of California Lab Certification No. 2501

All QC is compliant unless otherwise noted. Please refer to the Quality Control Summary for overall QC performance data and associated samples.

Laboratory Sample Analysis Record

CAT No.	Analysis Name	Method	Trial#	Batch#	Analysis Date and Time	Analyst	Dilution Factor
10943	BTEX 8260B Water	SW-846 8260B	1	P130244AA	01/25/2013 02:54	Brett W Kenyon	1
01163	GC/MS VOA Water Prep	SW-846 5030B	1	P130244AA	01/25/2013 02:54	Brett W Kenyon	1
01728	TPH-GRO N. CA water C6-C12	SW-846 8015B	1	13025A07A	01/28/2013 12:50	Marie D John	1
01146	GC VOA Water Prep	SW-846 5030B	1	13025A07A	01/28/2013 12:50	Marie D John	1
08269	TPH-DRO water C10-C28	SW-846 8015B	1	130240017A	01/26/2013 09:32	Christine E Dolman	1
02216	TPH-DRO water C10-C28 w/Si Gel	SW-846 8015B	1	130240018A	02/06/2013 09:34	Christine E Dolman	1
11172	DRO by 8015 w/ Silica Gel Ext	SW-846 3510C	1	130240018A	01/24/2013 22:00	Elaine F Stoltzfus	1
07003	Extraction - DRO (Waters)	SW-846 3510C	1	130240017A	01/24/2013 22:00	Elaine F Stoltzfus	1

Sample Description: MW-4-W-130119 Grab Water
Facility# 206127 **Job#** 386498 GRD
 2301-2307 Blanding Ave-Ala T06019744728 MW-4

LLI Sample # WW 6930777
LLI Group # 1363813
Account # 10904

Project Name: 206127

Collected: 01/19/2013 10:50 by JH Chevron
 L4310
 Submitted: 01/22/2013 21:11 6001 Bollinger Canyon Rd.
 Reported: 02/07/2013 21:03 San Ramon CA 94583

BAAM4

CAT No.	Analysis Name	CAS Number	As Received Result	As Received Method Detection Limit	Dilution Factor
GC/MS Volatiles SW-846 8260B ug/l					
10943	Benzene	71-43-2	N.D.	0.5	1
10943	Ethylbenzene	100-41-4	N.D.	0.5	1
10943	Toluene	108-88-3	N.D.	0.5	1
10943	Xylene (Total)	1330-20-7	N.D.	0.5	1
GC Volatiles SW-846 8015B ug/l					
01728	TPH-GRO N. CA water C6-C12	n.a.	N.D.	50	1
GC Petroleum SW-846 8015B ug/l					
Hydrocarbons					
08269	TPH-DRO water C10-C28	n.a.	380	50	1
GC Petroleum SW-846 8015B ug/l					
Hydrocarbons w/Si					
02216	TPH-DRO water C10-C28 w/Si Gel	n.a.	N.D.	50	1
The reverse surrogate, capric acid, is present at <1%.					

General Sample Comments

State of California Lab Certification No. 2501

All QC is compliant unless otherwise noted. Please refer to the Quality Control Summary for overall QC performance data and associated samples.

Laboratory Sample Analysis Record

CAT No.	Analysis Name	Method	Trial#	Batch#	Analysis Date and Time	Analyst	Dilution Factor
10943	BTEX 8260B Water	SW-846 8260B	1	P130244AA	01/25/2013 03:22	Brett W Kenyon	1
01163	GC/MS VOA Water Prep	SW-846 5030B	1	P130244AA	01/25/2013 03:22	Brett W Kenyon	1
01728	TPH-GRO N. CA water C6-C12	SW-846 8015B	1	13025A07A	01/28/2013 13:15	Marie D John	1
01146	GC VOA Water Prep	SW-846 5030B	1	13025A07A	01/28/2013 13:15	Marie D John	1
08269	TPH-DRO water C10-C28	SW-846 8015B	1	130240017A	01/26/2013 05:35	Christine E Dolman	1
02216	TPH-DRO water C10-C28 w/Si Gel	SW-846 8015B	1	130240018A	02/01/2013 02:44	Artie D Kunselman	1
11172	DRO by 8015 w/ Silica Gel Ext	SW-846 3510C	1	130240018A	01/24/2013 22:00	Elaine F Stoltzfus	1
07003	Extraction - DRO (Waters)	SW-846 3510C	1	130240017A	01/24/2013 22:00	Elaine F Stoltzfus	1

Sample Description: MW-5-W-130119 Grab Water
Facility# 206127 Job# 386498 GRD
2301-2307 Blanding Ave-Ala T06019744728 MW-5

LLI Sample # WW 6930778
LLI Group # 1363813
Account # 10904

Project Name: 206127

Collected: 01/19/2013 11:40 by JH Chevron
 Submitted: 01/22/2013 21:11 L4310
 Reported: 02/07/2013 21:03 6001 Bollinger Canyon Rd.
 San Ramon CA 94583

BAAM5

CAT No.	Analysis Name	CAS Number	As Received Result	As Received Method Detection Limit	Dilution Factor
GC/MS Volatiles SW-846 8260B ug/l					
10943	Benzene	71-43-2	100	5	10
10943	Ethylbenzene	100-41-4	N.D.	5	10
10943	Toluene	108-88-3	7	5	10
10943	Xylene (Total)	1330-20-7	7	5	10
GC Volatiles SW-846 8015B ug/l					
01728	TPH-GRO N. CA water C6-C12	n.a.	3,500	50	1
GC Petroleum SW-846 8015B ug/l					
Hydrocarbons					
08269	TPH-DRO water C10-C28	n.a.	4,200	50	1
GC Petroleum SW-846 8015B ug/l					
Hydrocarbons w/Si					
02216	TPH-DRO water C10-C28 w/Si Gel	n.a.	400	50	1
The reverse surrogate, capric acid, is present at <1%.					

General Sample Comments

State of California Lab Certification No. 2501

All QC is compliant unless otherwise noted. Please refer to the Quality Control Summary for overall QC performance data and associated samples.

Laboratory Sample Analysis Record

CAT No.	Analysis Name	Method	Trial#	Batch#	Analysis Date and Time	Analyst	Dilution Factor
10943	BTEX 8260B Water	SW-846 8260B	1	P130244AA	01/25/2013 03:49	Brett W Kenyon	10
01163	GC/MS VOA Water Prep	SW-846 5030B	1	P130244AA	01/25/2013 03:49	Brett W Kenyon	10
01728	TPH-GRO N. CA water C6-C12	SW-846 8015B	1	13025A07A	01/28/2013 13:41	Marie D John	1
01146	GC VOA Water Prep	SW-846 5030B	1	13025A07A	01/28/2013 13:41	Marie D John	1
08269	TPH-DRO water C10-C28	SW-846 8015B	1	130240017A	01/26/2013 11:07	Christine E Dolman	1
02216	TPH-DRO water C10-C28 w/Si Gel	SW-846 8015B	1	130240018A	02/01/2013 03:07	Artie D Kunselman	1
11172	DRO by 8015 w/ Silica Gel Ext	SW-846 3510C	1	130240018A	01/24/2013 22:00	Elaine F Stoltzfus	1
07003	Extraction - DRO (Waters)	SW-846 3510C	1	130240017A	01/24/2013 22:00	Elaine F Stoltzfus	1

Sample Description: MW-6-W-130119 Grab Water
Facility# 206127 **Job#** 386498 GRD
 2301-2307 Blanding Ave-Ala T06019744728 MW-6

LLI Sample # WW 6930779
LLI Group # 1363813
Account # 10904

Project Name: 206127

Collected: 01/19/2013 12:40 by JH Chevron
 L4310
 Submitted: 01/22/2013 21:11 6001 Bollinger Canyon Rd.
 Reported: 02/07/2013 21:03 San Ramon CA 94583

BAAM6

CAT No.	Analysis Name	CAS Number	As Received Result	As Received Method Detection Limit	Dilution Factor
GC/MS Volatiles					
		SW-846 8260B	ug/l	ug/l	
10943	Benzene	71-43-2	3	0.5	1
10943	Ethylbenzene	100-41-4	N.D.	0.5	1
10943	Toluene	108-88-3	N.D.	0.5	1
10943	Xylene (Total)	1330-20-7	N.D.	0.5	1
GC Volatiles					
		SW-846 8015B	ug/l	ug/l	
01728	TPH-GRO N. CA water C6-C12	n.a.	250	50	1
GC Petroleum Hydrocarbons					
		SW-846 8015B	ug/l	ug/l	
08269	TPH-DRO water C10-C28	n.a.	830	50	1
GC Petroleum Hydrocarbons w/Si					
		SW-846 8015B	ug/l	ug/l	
02216	TPH-DRO water C10-C28 w/Si Gel	n.a.	N.D.	50	1
	The reverse surrogate, capric acid, is present at <1%.				

General Sample Comments

State of California Lab Certification No. 2501

All QC is compliant unless otherwise noted. Please refer to the Quality Control Summary for overall QC performance data and associated samples.

Laboratory Sample Analysis Record

CAT No.	Analysis Name	Method	Trial#	Batch#	Analysis Date and Time	Analyst	Dilution Factor
10943	BTEX 8260B Water	SW-846 8260B	1	P130244AA	01/25/2013 04:17	Brett W Kenyon	1
01163	GC/MS VOA Water Prep	SW-846 5030B	1	P130244AA	01/25/2013 04:17	Brett W Kenyon	1
01728	TPH-GRO N. CA water C6-C12	SW-846 8015B	1	13025A07A	01/28/2013 14:06	Marie D John	1
01146	GC VOA Water Prep	SW-846 5030B	1	13025A07A	01/28/2013 14:06	Marie D John	1
08269	TPH-DRO water C10-C28	SW-846 8015B	1	130240017A	01/26/2013 05:58	Christine E Dolman	1
02216	TPH-DRO water C10-C28 w/Si Gel	SW-846 8015B	1	130240018A	02/01/2013 03:30	Artie D Kunselman	1
11172	DRO by 8015 w/ Silica Gel Ext	SW-846 3510C	1	130240018A	01/24/2013 22:00	Elaine F Stoltzfus	1
07003	Extraction - DRO (Waters)	SW-846 3510C	1	130240017A	01/24/2013 22:00	Elaine F Stoltzfus	1

Quality Control Summary

Client Name: Chevron
Reported: 02/07/13 at 09:03 PM

Group Number: 1363813

Matrix QC may not be reported if insufficient sample or site-specific QC samples were not submitted. In these situations, to demonstrate precision and accuracy at a batch level, a LCS/LCSD was performed, unless otherwise specified in the method.

All Inorganic Initial Calibration and Continuing Calibration Blanks met acceptable method criteria unless otherwise noted on the Analysis Report.

Laboratory Compliance Quality Control

<u>Analysis Name</u>	<u>Blank Result</u>	<u>Blank MDL</u>	<u>Report Units</u>	<u>LCS %REC</u>	<u>LCSD %REC</u>	<u>LCS/LCSD Limits</u>	<u>RPD</u>	<u>RPD Max</u>
Batch number: P130244AA	Sample number(s): 6930773-6930779							
Benzene	N.D.	0.5	ug/l	89		77-121		
Ethylbenzene	N.D.	0.5	ug/l	92		79-120		
Toluene	N.D.	0.5	ug/l	92		79-120		
Xylene (Total)	N.D.	0.5	ug/l	92		77-120		
Batch number: P130252AA	Sample number(s): 6930772							
Benzene	N.D.	0.5	ug/l	95		77-121		
Ethylbenzene	N.D.	0.5	ug/l	98		79-120		
Toluene	N.D.	0.5	ug/l	99		79-120		
Xylene (Total)	N.D.	0.5	ug/l	98		77-120		
Batch number: 13024A20A	Sample number(s): 6930772-6930775							
TPH-GRO N. CA water C6-C12	N.D.	50.	ug/l	97	101	75-135	4	30
Batch number: 13025A07A	Sample number(s): 6930776-6930779							
TPH-GRO N. CA water C6-C12	N.D.	50.	ug/l	108	108	75-135	0	30
Batch number: 130240017A	Sample number(s): 6930773-6930779							
TPH-DRO water C10-C28	N.D.	32.	ug/l	90	85	56-122	6	20
Batch number: 130240018A	Sample number(s): 6930773-6930779							
TPH-DRO water C10-C28 w/Si Gel	N.D.	32.	ug/l	79	75	50-124	5	20

Sample Matrix Quality Control

Unspiked (UNSPK) = the sample used in conjunction with the matrix spike
Background (BKG) = the sample used in conjunction with the duplicate

<u>Analysis Name</u>	<u>MS %REC</u>	<u>MSD %REC</u>	<u>MS/MSD Limits</u>	<u>RPD</u>	<u>RPD MAX</u>	<u>BKG Conc</u>	<u>DUP Conc</u>	<u>DUP RPD</u>	<u>Dup RPD Max</u>
Batch number: P130244AA	Sample number(s): 6930773-6930779 UNSPK: 6930774								
Benzene	87	101	72-134	13	30				
Ethylbenzene	92	103	71-134	12	30				
Toluene	91	101	80-125	11	30				
Xylene (Total)	92	101	79-125	10	30				
Batch number: P130252AA	Sample number(s): 6930772 UNSPK: P929751								
Benzene	103	104	72-134	1	30				
Ethylbenzene	105	106	71-134	1	30				
Toluene	106	105	80-125	1	30				

*- Outside of specification

- (1) The result for one or both determinations was less than five times the LOQ.
- (2) The unspiked result was more than four times the spike added.

Quality Control Summary

Client Name: Chevron
Reported: 02/07/13 at 09:03 PM

Group Number: 1363813

Sample Matrix Quality Control

Unspiked (UNSPK) = the sample used in conjunction with the matrix spike
Background (BKG) = the sample used in conjunction with the duplicate

<u>Analysis Name</u>	<u>MS</u> <u>%REC</u>	<u>MSD</u> <u>%REC</u>	<u>MS/MSD</u> <u>Limits</u>	<u>RPD</u> <u>RPD</u>	<u>RPD</u> <u>MAX</u>	<u>BKG</u> <u>Conc</u>	<u>DUP</u> <u>Conc</u>	<u>DUP</u> <u>RPD</u>	<u>Dup RPD</u> <u>Max</u>
Xylene (Total)	104	106	79-125	2	30				

Surrogate Quality Control

Surrogate recoveries which are outside of the QC window are confirmed unless attributed to dilution or otherwise noted on the Analysis Report.

Analysis Name: UST VOCs by 8260B - Water

Batch number: P130244AA

	Dibromofluoromethane	1,2-Dichloroethane-d4	Toluene-d8	4-Bromofluorobenzene
6930773	102	100	103	101
6930774	105	99	102	107
6930775	105	103	101	102
6930776	105	99	100	106
6930777	106	98	101	101
6930778	105	99	102	102
6930779	104	101	101	103
Blank	106	99	102	102
LCS	104	103	102	104
MS	105	100	102	108
MSD	103	101	101	105
Limits:	80-116	77-113	80-113	78-113

Analysis Name: UST VOCs by 8260B - Water

Batch number: P130252AA

	Dibromofluoromethane	1,2-Dichloroethane-d4	Toluene-d8	4-Bromofluorobenzene
6930772	105	97	103	100
Blank	104	95	102	101
LCS	102	98	102	106
MS	103	103	102	104
MSD	103	100	102	105
Limits:	80-116	77-113	80-113	78-113

Analysis Name: TPH-GRO N. CA water C6-C12

Batch number: 13024A20A

	Trifluorotoluene-F
6930772	79
6930773	162*
6930774	85
6930775	80
Blank	87
LCS	110
LCSD	109

*- Outside of specification

- (1) The result for one or both determinations was less than five times the LOQ.
- (2) The unspiked result was more than four times the spike added.

Quality Control Summary

Client Name: Chevron
Reported: 02/07/13 at 09:03 PM

Group Number: 1363813

Surrogate Quality Control

Limits: 63-135

Analysis Name: TPH-GRO N. CA water C6-C12
Batch number: 13025A07A
Trifluorotoluene-F

6930776	83
6930777	85
6930778	120
6930779	91
Blank	86
LCS	97
LCSD	96

Limits: 63-135

Analysis Name: TPH-DRO water C10-C28
Batch number: 130240017A
Orthoterphenyl

6930773	100
6930774	99
6930775	89
6930776	84
6930777	91
6930778	96
6930779	95
Blank	95
LCS	97
LCSD	90

Limits: 50-154

Analysis Name: TPH-DRO water C10-C28 w/Si Gel
Batch number: 130240018A
Orthoterphenyl

6930773	84
6930774	100
6930775	83
6930776	84
6930777	87
6930778	89
6930779	92
Blank	116
LCS	96
LCSD	92

Limits: 50-154

*- Outside of specification

- (1) The result for one or both determinations was less than five times the LOQ.
- (2) The unspiked result was more than four times the spike added.

Explanation of Symbols and Abbreviations

The following defines common symbols and abbreviations used in reporting technical data:

RL	Reporting Limit	BMQL	Below Minimum Quantitation Level
N.D.	none detected	MPN	Most Probable Number
TNTC	Too Numerous To Count	CP Units	cobalt-chloroplatinate units
IU	International Units	NTU	nephelometric turbidity units
umhos/cm	micromhos/cm	ng	nanogram(s)
C	degrees Celsius	F	degrees Fahrenheit
meq	milliequivalents	lb.	pound(s)
g	gram(s)	kg	kilogram(s)
µg	microgram(s)	mg	milligram(s)
mL	milliliter(s)	L	liter(s)
m3	cubic meter(s)	µL	microliter(s)
		pg/L	picogram/liter
<	less than - The number following the sign is the <u>limit of quantitation</u> , the smallest amount of analyte which can be reliably determined using this specific test.		
>	greater than		
J	estimated value – The result is \geq the Method Detection Limit (MDL) and $<$ the Limit of Quantitation (LOQ).		
ppm	parts per million - One ppm is equivalent to one milligram per kilogram (mg/kg), or one gram per million grams. For aqueous liquids, ppm is usually taken to be equivalent to milligrams per liter (mg/l), because one liter of water has a weight very close to a kilogram. For gases or vapors, one ppm is equivalent to one microliter of gas per liter of gas.		
ppb	parts per billion		
Dry weight basis	Results printed under this heading have been adjusted for moisture content. This increases the analyte weight concentration to approximate the value present in a similar sample without moisture. All other results are reported on an as-received basis.		

U.S. EPA CLP Data Qualifiers:

Organic Qualifiers		Inorganic Qualifiers	
A	TIC is a possible aldol-condensation product	B	Value is $<$ CRDL, but \geq IDL
B	Analyte was also detected in the blank	E	Estimated due to interference
C	Pesticide result confirmed by GC/MS	M	Duplicate injection precision not met
D	Compound quantitated on a diluted sample	N	Spike sample not within control limits
E	Concentration exceeds the calibration range of the instrument	S	Method of standard additions (MSA) used for calculation
N	Presumptive evidence of a compound (TICs only)	U	Compound was not detected
P	Concentration difference between primary and confirmation columns $>$ 25%	W	Post digestion spike out of control limits
U	Compound was not detected	*	Duplicate analysis not within control limits
X,Y,Z	Defined in case narrative	+	Correlation coefficient for MSA $<$ 0.995

Analytical test results meet all requirements of NELAC unless otherwise noted under the individual analysis.

Measurement uncertainty values, as applicable, are available upon request.

Tests results relate only to the sample tested. Clients should be aware that a critical step in a chemical or microbiological analysis is the collection of the sample. Unless the sample analyzed is truly representative of the bulk of material involved, the test results will be meaningless. If you have questions regarding the proper techniques of collecting samples, please contact us. We cannot be held responsible for sample integrity, however, unless sampling has been performed by a member of our staff. This report shall not be reproduced except in full, without the written approval of the laboratory.

Times are local to the area of activity. Parameters listed in the 40 CFR part 136 Table II as "analyze immediately" are not performed within 15 minutes.

WARRANTY AND LIMITS OF LIABILITY - In accepting analytical work, we warrant the accuracy of test results for the sample as submitted. THE FOREGOING EXPRESS WARRANTY IS EXCLUSIVE AND IS GIVEN IN LIEU OF ALL OTHER WARRANTIES, EXPRESSED OR IMPLIED. WE DISCLAIM ANY OTHER WARRANTIES, EXPRESSED OR IMPLIED, INCLUDING A WARRANTY OF FITNESS FOR PARTICULAR PURPOSE AND WARRANTY OF MERCHANTABILITY. IN NO EVENT SHALL LANCASTER LABORATORIES BE LIABLE FOR INDIRECT, SPECIAL, CONSEQUENTIAL, OR INCIDENTAL DAMAGES INCLUDING, BUT NOT LIMITED TO, DAMAGES FOR LOSS OF PROFIT OR GOODWILL REGARDLESS OF (A) THE NEGLIGENCE (EITHER SOLE OR CONCURRENT) OF LANCASTER LABORATORIES AND (B) WHETHER LANCASTER LABORATORIES HAS BEEN INFORMED OF THE POSSIBILITY OF SUCH DAMAGES. We accept no legal responsibility for the purposes for which the client uses the test results. No purchase order or other order for work shall be accepted by Lancaster Laboratories which includes any conditions that vary from the Standard Terms and Conditions, and Lancaster hereby objects to any conflicting terms contained in any acceptance or order submitted by client.

ATTACHMENT C

HISTORICAL GROUNDWATER MONITORING AND SAMPLING DATA

Table 1
Groundwater Monitoring Data and Analytical Results
Chevron #206127 (Former Signal Oil Marine Terminal)
2301-2337 Blanding Avenue
Alameda, California

WELL ID/ DATE	TQC* (fL)	DTW (fL)	GWE (msl)	TPH-DRO (µg/L)	TPH-GRO (µg/L)	B (µg/L)	T (µg/L)	E (µg/L)	X (µg/L)	MTBE (µg/L)
MW-1										
01/23/01 ¹	--	7.16	--	1,100 ^{2,3}	5,210 ⁴	868	<50.0	<50.0	<50.0	<250
04/09/01	10.62	8.12	2.50	1,200 ⁶	3,000 ⁵	920	<20	<20	<20	<100
07/30/01	10.62	9.15	1.47	550 ^{3,8}	2,000 ⁷	730	13	<5.0	<5.0	<25
10/08/01	10.62	7.86	2.76	2,200 ⁹	1,200	120	2.4	5.9	6.4	<2.5
01/13/02	10.62	7.02	3.60	3,300 ³	930	320	0.78	0.87	3.8	<2.5
04/08/02	10.62	9.60	1.02	1,200 ³	960	50	1.4	2.6	9.0	<2.5
07/31/02	10.62	9.27	1.35	2,800 ³	930	64	1.4	1.9	11	<5.0
10/15/02	10.62	8.00	2.62	1,000 ³	620	25	0.78	1.4	4.3	<2.5
01/14/03	10.62	7.05	3.57	960 ³	1,600	20	1.3	1.3	<1.5	<2.5
04/15/03	10.62	8.02	2.60	920 ³	870	56	1	1.4	3.1	<2.5
07/16/03 ¹⁰	10.62	10.08	0.54	1,400 ³	780	85	1	0.8	0.7	<0.5
10/18/03 ¹⁰	10.62	8.51	2.11	1,200 ³	640	42	0.8	<0.5	0.5	<0.5
01/22/04 ¹⁰	10.62	8.95	1.67	1,500 ³	440	18	<0.5	<0.5	<0.5	<0.5
04/23/04 ¹⁰	10.62	8.95	1.67	2,200 ³	410	10	<0.5	<0.5	<0.5	<0.5
07/23/04 ¹⁰	10.62	9.21	1.41	1,800 ³	400	6	<0.5	<0.5	<0.5	<0.5
10/22/04 ¹⁰	10.62	8.36	2.26	2,200 ³	150	2	<0.5	<0.5	<0.5	<0.5
01/28/05 ¹⁰	10.62	7.09	3.53	1,200 ³	55	8	<0.5	<0.5	<0.5	<0.5
04/26/05 ¹⁰	10.62	7.84	2.78	480 ³	<50	5	<0.5	<0.5	<0.5	<0.5
07/15/05 ¹⁰	10.62	8.12	2.50	610 ^{3,11}	<50	<0.5	<0.5	<0.5	<0.5	<0.5
10/14/05 ¹⁰	10.62	8.07	2.55	920 ^{3,12}	<50	10	<0.5	<0.5	<0.5	<0.5
01/12/06 ¹⁰	10.62	6.98	3.64	960 ^{3,12}	<50	6	<0.5	<0.5	<0.5	<0.5
04/13/06 ¹⁰	10.62	7.04	3.58	1,200 ³	<50	<0.5	<0.5	<0.5	<0.5	<0.5
07/13/06 ¹⁰	10.62	7.13	3.49	1,200 ³	92	14	<0.5	<0.5	<0.5	<0.5
10/17/06 ¹⁰	10.62	7.64	2.98	990 ³	<50	3	<0.5	<0.5	<0.5	<0.5
01/16/07 ¹⁰	10.62	7.09	3.53	840 ³	83	4	<0.5	<0.5	<0.5	<0.5
04/17/07 ¹⁰	10.62	7.11	3.51	1,200 ³	57	<0.5	<0.5	<0.5	<0.5	<0.5
07/17/07 ¹⁰	10.62	7.41	3.21	1,100 ³	120	8	<0.5	<0.5	<0.5	<0.5
10/16/07 ¹⁰	10.62	7.55	3.07	750 ³	<50	<0.5	<0.5	<0.5	<0.5	<0.5
01/16/08 ¹⁰	10.62	6.98	3.64	1,700 ³	<50	<0.5	<0.5	<0.5	<0.5	<0.5
04/16/08 ¹⁰	10.62	7.36	3.26	1,100 ³	62	<0.5	<0.5	<0.5	<0.5	<0.5
07/16/08 ¹⁰	10.62	7.89	2.73	580 ³	93	3	<0.5	<0.5	<0.5	<0.5
10/15/08 ¹⁰	10.62	7.46	3.16	740 ³	56	0.7	<0.5	<0.5	0.8	<0.5

Table 1
Groundwater Monitoring Data and Analytical Results
 Chevron #206127 (Former Signal Oil Marine Terminal)
 2301-2337 Blanding Avenue
 Alameda, California

WELL ID/ DATE	TOC* (fl.)	DTW (ft.)	GWE (msl)	TPH-DRO (µg/L)	TPH-GRO (µg/L)	B (µg/L)	T (µg/L)	E (µg/L)	X (µg/L)	MTBE (µg/L)
MW-1 (cont)										
01/21/09 ¹⁰	10.62	7.19	3.43	390 ³	<50	<0.5	<0.5	<0.5	<0.5	<0.5
04/15/09 ¹⁰	10.62	6.93	3.69	1,400 ³	80	0.7	<0.5	<0.5	<0.5	<0.5
07/03/09 ¹⁰	13.49	8.08	5.41	1,300 ³	51	<0.5	<0.5	<0.5	<0.5	<0.5
10/01/09 ¹⁰	13.49	9.52	3.97	1,500 ³	86	<0.5	<0.5	<0.5	<0.5	<0.5
01/19/10 ¹⁰	13.49	7.64	5.85	340 ^{3,15}	<50	<0.5	<0.5	<0.5	<0.5	<0.5
04/26/10 ¹⁶	13.49	9.20	4.29	820 ³	66	<0.5	<0.5	<0.5	<0.5	<0.5
MW-2										
06/30/09 ¹	10.63	3.80	6.83	--	--	--	--	--	--	--
07/03/09 ¹⁴	10.63	3.91	6.72	<50 ³	<50	<0.5	<0.5	<0.5	<0.5	--
10/01/09 ¹⁴	10.63	4.11	6.52	<50 ³	<50	<0.5	<0.5	<0.5	<0.5	--
01/19/10 ¹⁴	10.63	3.90	6.73	<50 ³	<50	<0.5	<0.5	<0.5	<0.5	--
04/26/10 ¹⁴	10.63	4.08	6.55	<50 ³	<50	<0.5	<0.5	<0.5	<0.5	--
MW-3										
06/30/09 ¹	10.72	4.61	6.11	--	--	--	--	--	--	--
07/03/09 ¹⁴	10.72	4.57	6.15	170 ³	310	1	<0.5	2	<0.5	--
10/01/09 ¹⁴	10.72	5.22	5.50	1,000 ³	52	<0.5	<0.5	<0.5	<0.5	--
01/19/10 ¹⁴	10.72	4.84	5.88	1,800 ³	120	2	<0.5	<0.5	<0.5	--
04/26/10 ¹⁴	10.72	4.86	5.86	1,700 ³	170	2	<0.5	<0.5	<0.5	--
MW-4										
06/30/09 ¹	11.40	6.02	5.38	--	--	--	--	--	--	--
07/03/09 ¹⁴	11.40	5.85	5.55	<50 ³	<50	<0.5	<0.5	<0.5	<0.5	--
10/01/09 ¹⁴	11.40	6.95	4.45	370 ³	<50	<0.5	<0.5	<0.5	<0.5	--
01/19/10 ¹⁴	11.40	6.22	5.18	110 ³	<50	<0.5	<0.5	<0.5	<0.5	--
04/26/10 ¹⁴	11.40	6.61	4.79	210 ^{5,17}	<50	<0.5	<0.5	<0.5	<0.5	--

Table 1
Groundwater Monitoring Data and Analytical Results
Chevron #206127 (Former Signal Oil Marine Terminal)
2301-2337 Blanding Avenue
Alameda, California

WELL ID/ DATE	TQC* (ft.)	DTW (ft.)	GWE (msl)	TPH-DRO (µg/L)	TPH-GRO (µg/L)	B (µg/L)	T (µg/L)	E (µg/L)	X (µg/L)	MTBE (µg/L)
MW-5										
06/30/09 ¹	10.50	5.20	5.30	--	--	--	--	--	--	--
07/03/09 ¹⁴	10.50	5.17	5.33	110 ³	930	33	2	0.6	3	--
10/01/09 ¹⁴	10.50	5.66	4.84	2,500 ³	1,800	57	3	0.9	5	--
01/19/10 ¹⁴	10.50	5.48	5.02	2,600 ³	2,200	74	4	1	5	--
04/26/10 ¹⁴	10.50	5.91	4.59	1,700 ³	2,200	94	4	2	5	--
CS-2										
07/30/01	--	--	--	140 ^{3,5}	<50	<0.50	<0.50	<0.50	<0.50	<2.5
10/08/01	--	--	--	53 ⁹	<50	<0.50	<0.50	<0.50	<1.5	<2.5
01/13/02	--	--	--	<50 ³	<50	<0.50	<0.50	<0.50	<1.5	<2.5
04/08/02	--	--	--	77 ³	<50	<0.50	<0.50	<0.50	<1.5	<2.5
07/31/02	--	--	--	<50 ³	<50	<0.50	<0.50	<0.50	<1.5	<2.5
10/15/02	--	--	--	<50 ³	<50	<0.50	<0.50	<0.50	<1.5	<2.5
01/14/03	--	--	--	<50 ³	<50	<0.50	<0.50	<0.50	<1.5	<2.5
04/15/03	--	--	--	<50 ³	<50	<0.5	<0.5	<0.5	<1.5	<2.5
07/16/03 ¹⁰	--	--	--	<50 ³	<50	<0.5	0.7	<0.5	0.6	<0.5
10/18/03 ¹⁰	--	--	--	<50 ³	<50	<0.5	<0.5	<0.5	<0.5	<0.5
01/22/04 ¹⁰	--	--	--	<50 ³	<50	<0.5	<0.5	<0.5	<0.5	<0.5
04/23/04 ¹⁰	--	--	--	<50 ³	<50	<0.5	<0.5	<0.5	<0.5	<0.5
07/23/04 ¹⁰	--	--	--	<50 ³	<50	<0.5	<0.5	<0.5	<0.5	<0.5
10/22/04 ¹⁰	--	--	--	<50 ³	<50	<0.5	<0.5	<0.5	<0.5	<0.5
01/28/05 ¹⁰	--	--	--	<50 ³	<50	<0.5	<0.5	<0.5	<0.5	<0.5
04/26/05 ¹⁰	--	--	--	<50 ³	<50	<0.5	<0.5	<0.5	<0.5	<0.5
07/15/05 ¹⁰	--	--	--	<50 ³	<50	<0.5	<0.5	<0.5	<0.5	<0.5
10/14/05 ¹⁰	--	--	--	<50 ³	<50	<0.5	<0.5	<0.5	<0.5	<0.5
01/12/06 ¹⁰	--	--	--	<50 ³	<50	<0.5	<0.5	<0.5	<0.5	<0.5
04/13/06 ¹⁰	--	--	--	<50 ³	<50	<0.5	<0.5	<0.5	<0.5	<0.5
07/13/06 ¹⁰	--	--	--	140 ³	<50	<0.5	<0.5	<0.5	<0.5	<0.5
10/17/06 ¹⁰	--	--	--	<50 ³	<50	<0.5	<0.5	<0.5	<0.5	<0.5
01/16/07 ¹⁰	--	--	--	<50 ³	<50	<0.5	<0.5	<0.5	<0.5	<0.5
04/17/07 ¹⁰	--	--	--	<50 ³	<50	<0.5	<0.5	<0.5	<0.5	<0.5

Table 1
Groundwater Monitoring Data and Analytical Results
 Chevron #206127 (Former Signal Oil Marine Terminal)
 2301-2337 Blanding Avenue
 Alameda, California

WELL ID/ DATE	TOC* (fl.)	DTW (fl.)	GWE (msl)	TPH-DRO (µg/L)	TPH-GRO (µg/L)	B (µg/L)	T (µg/L)	E (µg/L)	X (µg/L)	MTBE (µg/L)
CS-2 (cont)										
07/17/07 ¹⁰	--	--	--	<50 ³	<50	<0.5	<0.5	<0.5	<0.5	<0.5
10/16/07 ¹⁰	--	--	--	<50 ³	<50	<0.5	<0.5	<0.5	<0.5	<0.5
01/16/08 ¹⁰	--	--	--	85 ³	<50	<0.5	<0.5	<0.5	<0.5	<0.5
04/16/08 ¹⁰	--	--	--	<50 ³	<50	<0.5	<0.5	<0.5	<0.5	<0.5
07/16/08 ¹⁰	--	--	--	<50 ³	<50	<0.5	<0.5	<0.5	<0.5	<0.5
10/15/08 ¹⁰	--	--	--	<50 ³	<50	<0.5	<0.5	<0.5	<0.5	<0.5
01/21/09 ¹⁰	--	--	--	<50 ³	<50	<0.5	<0.5	<0.5	<0.5	<0.5
04/15/09 ¹⁰	--	--	--	86 ³	<50	<0.5	<0.5	<0.5	<0.5	<0.5
07/03/09 ¹⁰	--	--	--	<50 ³	<50	<0.5	<0.5	<0.5	<0.5	<0.5
10/01/09 ¹⁰	--	--	--	<50 ³	<50	<0.5	<0.5	<0.5	<0.5	<0.5
01/19/10 ¹⁰	--	--	--	210 ^{3,16}	<50	<0.5	<0.5	<0.5	<0.5	<0.5
TRIP BLANK										
TB-LB										
01/23/01	--	--	--	--	<50.0	<0.500	<0.500	<0.500	<0.500	<2.50
04/09/01	--	--	--	--	<50	<0.50	<0.50	<0.50	<0.50	<2.5
07/30/01	--	--	--	--	<50	<0.50	<0.50	<0.50	<0.50	<2.5
QA										
10/08/01	--	--	--	--	<50	<0.50	<0.50	<0.50	<1.5	<2.5
01/13/02	--	--	--	--	<50	<0.50	<0.50	<0.50	<1.5	<2.5
04/08/02	--	--	--	--	<50	<0.50	<0.50	<0.50	<1.5	<2.5
07/31/02	--	--	--	--	<50	<0.50	<0.50	<0.50	<1.5	<2.5
10/15/02	--	--	--	--	<50	<0.50	<0.50	<0.50	<1.5	<2.5
01/14/03	--	--	--	--	<50	<0.50	<0.50	<0.50	<1.5	<2.5
04/15/03	--	--	--	--	<50	<0.5	<0.5	<0.5	<1.5	<2.5
07/16/03 ¹⁰	--	--	--	--	<50	<0.5	<0.5	<0.5	<0.5	<0.5
10/18/03 ¹⁰	--	--	--	--	<50	<0.5	<0.5	<0.5	<0.5	<0.5
01/22/04 ¹⁰	--	--	--	--	<50	<0.5	<0.5	<0.5	<0.5	<0.5
04/23/04 ¹⁰	--	--	--	--	<50	<0.5	<0.5	<0.5	<0.5	<0.5
07/23/04 ¹⁰	--	--	--	--	<50	<0.5	<0.5	<0.5	<0.5	<0.5
10/22/04 ¹⁰	--	--	--	--	<50	<0.5	<0.5	<0.5	<0.5	<0.5

Table 1
Groundwater Monitoring Data and Analytical Results
 Chevron #206127 (Former Signal Oil Marine Terminal)
 2301-2337 Blanding Avenue
 Alameda, California

WELL ID/ DATE	TOC* (fl.)	DTW (ft.)	GWE (msl)	TPH-DRO (µg/L)	TPH-GRO (µg/L)	B (µg/L)	T (µg/L)	E (µg/L)	X (µg/L)	MTBE (µg/L)
QA (cont)										
01/28/05 ¹⁰	--	--	--	--	<50	<0.5	<0.5	<0.5	<0.5	<0.5
04/26/05 ¹⁰	--	--	--	--	<50	<0.5	<0.5	<0.5	<0.5	<0.5
07/15/05 ¹⁰	--	--	--	--	<50	<0.5	<0.5	<0.5	<0.5	<0.5
10/14/05 ¹⁰	--	--	--	--	<50	<0.5	<0.5	<0.5	<0.5	<0.5
01/12/06 ¹⁰	--	--	--	--	<50	<0.5	<0.5	<0.5	<0.5	<0.5
04/13/06 ¹⁰	--	--	--	--	<50	<0.5	<0.5	<0.5	<0.5	<0.5
07/13/06 ¹⁰	--	--	--	--	<50	<0.5	<0.5	<0.5	<0.5	<0.5
10/17/06 ¹⁰	--	--	--	--	<50	<0.5	<0.5	<0.5	<0.5	<0.5
01/16/07 ¹⁰	--	--	--	--	<50	<0.5	<0.5	<0.5	<0.5	<0.5
04/17/07 ¹⁰	--	--	--	--	<50	<0.5	<0.5	<0.5	<0.5	<0.5
07/17/07 ¹⁰	--	--	--	--	<50	<0.5	<0.5	<0.5	<0.5	<0.5
10/16/07 ¹⁰	--	--	--	--	<50	<0.5	<0.5	<0.5	<0.5	<0.5
01/16/08 ¹⁰	--	--	--	--	<50	<0.5	<0.5	<0.5	<0.5	<0.5
04/16/08 ¹⁰	--	--	--	--	<50	<0.5	<0.5	<0.5	<0.5	<0.5
07/16/08 ¹⁰	--	--	--	--	<50	<0.5	<0.5	<0.5	<0.5	<0.5
10/15/08 ¹⁰	--	--	--	--	<50	<0.5	<0.5	<0.5	<0.5	<0.5
01/21/09 ¹⁰	--	--	--	--	<50 ¹³	<0.5	<0.5	<0.5	<0.5	<0.5
04/15/09 ¹⁰	--	--	--	--	<50	<0.5	<0.5	<0.5	<0.5	<0.5
07/03/09 ¹⁰	--	--	--	--	<50	<0.5	<0.5	<0.5	<0.5	<0.5
10/01/09 ¹⁰	--	--	--	--	<50	<0.5	<0.5	<0.5	<0.5	<0.5
01/19/10 ¹⁰	--	--	--	--	<50	<0.5	<0.5	<0.5	<0.5	<0.5
04/26/10 ¹⁰	--	--	--	--	<50	<0.5	<0.5	<0.5	<0.5	<0.5

Table 1
Groundwater Monitoring Data and Analytical Results
Chevron #206127 (Former Signal Oil Marine Terminal)
2301-2337 Blanding Avenue
Alameda, California

EXPLANATIONS:

TOC = Top of Casing
(ft.) = Feet

DTW = Depth to Water

GWE = Groundwater Elevation
(msl) = Mean sea level

TPH = Total Petroleum Hydrocarbons

DRO = Diesel Range Organics

GRO = Gasoline Range Organics

B = Benzene

T = Toluene

E = Ethylbenzene

X = Xylenes

MTBE = Methyl Tertiary Butyl Ether

(µg/L) = Micrograms per liter

-- = Not Measured/Not Analyzed

CS-2 = Creek Sample

QA = Quality Assurance/Trip Blank

* TOC elevations for all wells were surveyed on July 30, 2009, by Morrow Surveying. Vertical Datum is NAVD 88 from GPS observations. TOC elevations were surveyed on January 25, 2001, by Virgil Chavez Land Surveying. The benchmark used for the survey was a City of Alameda benchmark being a cut square at the centerline return, south corner of Oak and Blanding, (Benchmark Elevation = 8.236 feet, NGVD 29).

¹ Well development performed.

² Laboratory report indicates unidentified hydrocarbons <C16.

³ Analyzed with silica gel cleanup.

⁴ Laboratory report indicates weathered gasoline C6-C12.

⁵ Laboratory report indicates discrete peaks.

⁶ Laboratory report indicates diesel C9-C24 + unidentified hydrocarbons <C16.

⁷ Laboratory report indicates gasoline C6-C12.

⁸ Laboratory report indicates unidentified hydrocarbons C9-C24.

⁹ Analysis performed without silica gel cleanup although was requested on the Chain of Custody.

¹⁰ BTEX and MTBE by EPA Method 8260.

¹¹ Laboratory report indicates the observed sample pattern is not typical of #2 fuel/diesel. It elutes in the DRO range later than #2 fuel.

¹² Laboratory report indicates the observed sample pattern includes #2 fuel/diesel and an additional pattern which elutes later in the DRO range.

¹³ Laboratory report indicates the original analysis was performed on an instrument where the ending calibration standard failed the method criteria. The sample was originally analyzed approximately 60 minutes after the LCS/LCSD. The LCS/LCSD showed good GRO recovery and the surrogate recovery for this sample was 85%. The sample was reanalyzed from a vial with headspace since only 1 vial was submitted. The results for the original and the reanalysis were similar. The reanalysis was reported.

¹⁴ BTEX by EPA Method 8260.

¹⁵ Laboratory report indicates DRO was detected in the method blank at a concentration of 38 µg/L. Results from the reextraction are within limits. The hold time had expired prior to the reextraction therefore, all results are reported from the original extract. Similar results were obtained in both extracts.

¹⁶ Laboratory report indicates DRO was detected in the method blank at a concentration of 38 µg/L. Results from the reextraction are within limits. The hold time had expired prior to the reextraction therefore, all results are reported from the original extract. The DRO result for the reextract is 96 µg/L.

¹⁷ Laboratory report indicates DRO was detected in the method blank at a concentration of 47 µg/L. Results from the reextraction are within limits. The hold time had expired prior to the reextraction therefore, all results are reported from the original extract. Similar results were obtained in both extracts.

Table 2
Groundwater Analytical Results - Metals
 Chevron #206127 (Former Signal Oil Marine Terminal)
 2301-2337 Blanding Avenue
 Alameda, California

WELL ID/ DATE	Antimony (µg/L)	Arsenic (µg/L)	Barium (µg/L)	Beryllium (µg/L)	Cadmium (µg/L)	Chromium (µg/L)	Cobalt (µg/L)	Copper (µg/L)	Lead (µg/L)	Molybdenum (µg/L)	Nickel (µg/L)	Selenium (µg/L)	Silver (µg/L)	Thallium (µg/L)	Vanadium (µg/L)	Zinc (µg/L)	Mercury (µg/L)
MW-2 07/03/09	<9.7	<7.2	28.1	<1.4	<2.0	14.6	<2.1	<2.7	<6.9	<4.9	10.6	<8.9	<2.3	<14.0	12.6	11.6	<0.056
MW-3 07/03/09	<9.7	<7.2	143	<1.4	<2.0	8.5	<2.1	3.3	<6.9	<4.9	7.8	<8.9	<2.3	<14.0	13.8	18.8	<0.056
MW-4 07/03/09	<9.7	<7.2	83.5	<1.4	<2.0	10.0	<2.1	<2.7	<6.9	<4.9	4.5	<8.9	<2.3	<14.0	6.3	15.8	<0.056
MW-5 07/03/09	<9.7	32.7	148	<1.4	<2.0	<3.4	<2.1	3.1	<6.9	<4.9	3.6	<8.9	<2.3	<14.0	<2.5	19.2	<0.056

EXPLANATIONS

(µg/L) = Micrograms per liter

ANALYTICAL METHODS:

Metals analyzed by EPA Method SW-846 6010B
 Mercury analyzed by Method SW-7470A