

FAX Transmission Cover Sheet

TO: Jennifer Eberle

FROM: Doug Lovell

NUMBER OF PAGES TO FOLLOW: 5
(Not including this cover sheet)

ORIGINAL WILL NOT BE MAILED

MESSAGE: The missing cover sheet follows, as do four of our gradient plots for 901 Jefferson Street. The first plot shows two different gradient directions, depending upon whether the well that contains product (MW-19) is used. The remaining plots show a consistent westerly direction (product recovery had been initiated in MW-19 and was effective in reducing the observed product to a sheen). Call if you do not receive everything, if you have any questions, or if you discover some potential interaction between the sites you are studying and 901 Jefferson Street.

STREAMBORN

Mail: P.O. Box 8330, Berkeley CA 94707-8330

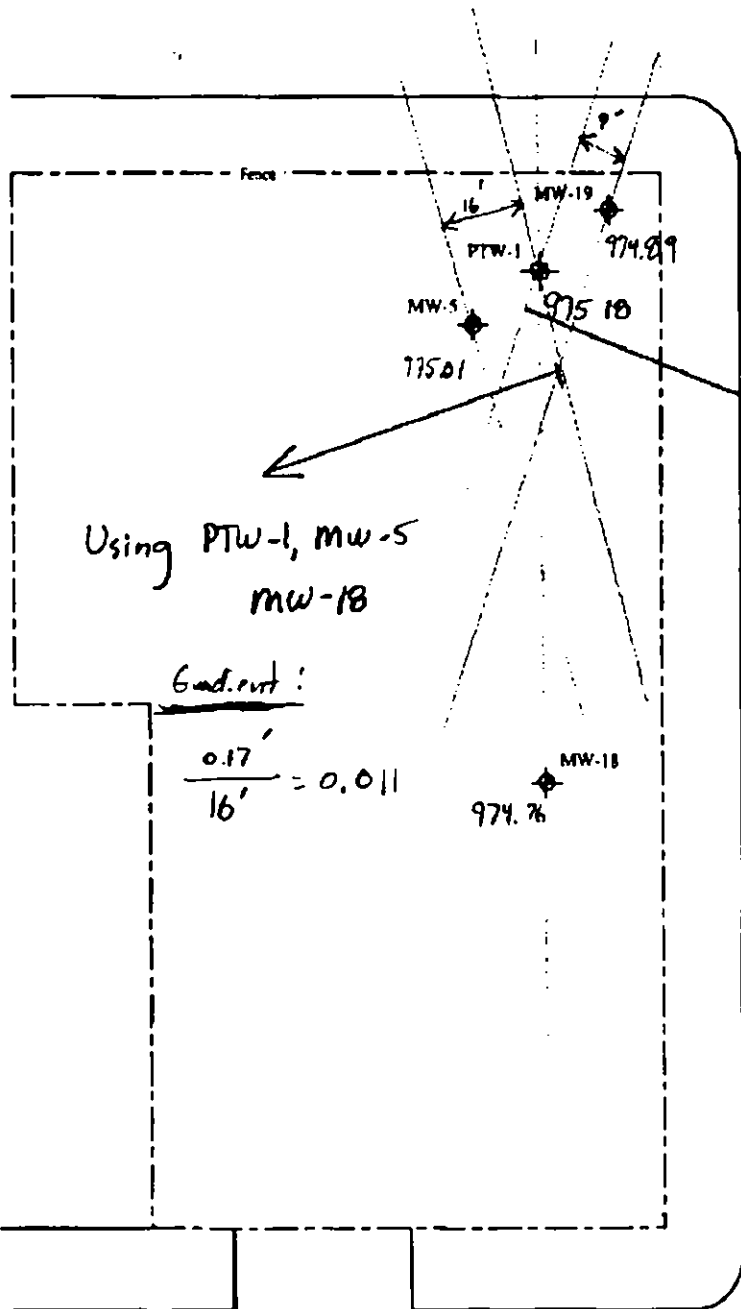
Office: 900 SantaFe Avenue, Albany CA 94706

510/528-4234

FAX 528-2613

10th Street

26 October 1994



Using PTW-1, MW-5
MW-18

Gradient:

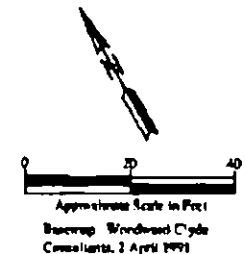
$$\frac{0.17'}{16'} = 0.011$$

Using PTW-1, MW-19,
MW-18

Gradient:

$$\frac{0.29'}{9'} = 0.032$$

Jefferson Street



Legend

Monitoring Well
MW-19

Discrepancy in flow direction may be caused by anomalous water level measurement in MW-19 due to presence of product.

Figure —
Monitoring Well Locations
901 Jefferson Street
Oakland CA

23 DECEMBER 94

10th Street

Fence

MW-19

PTW-1

MW-17

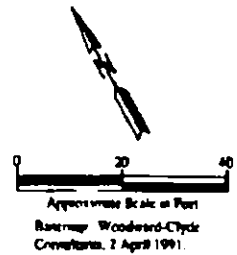
MW-18

Jefferson Street

$$\frac{0.06}{17} = 0.0035$$

$$\frac{0.18}{34} = 0.0053$$

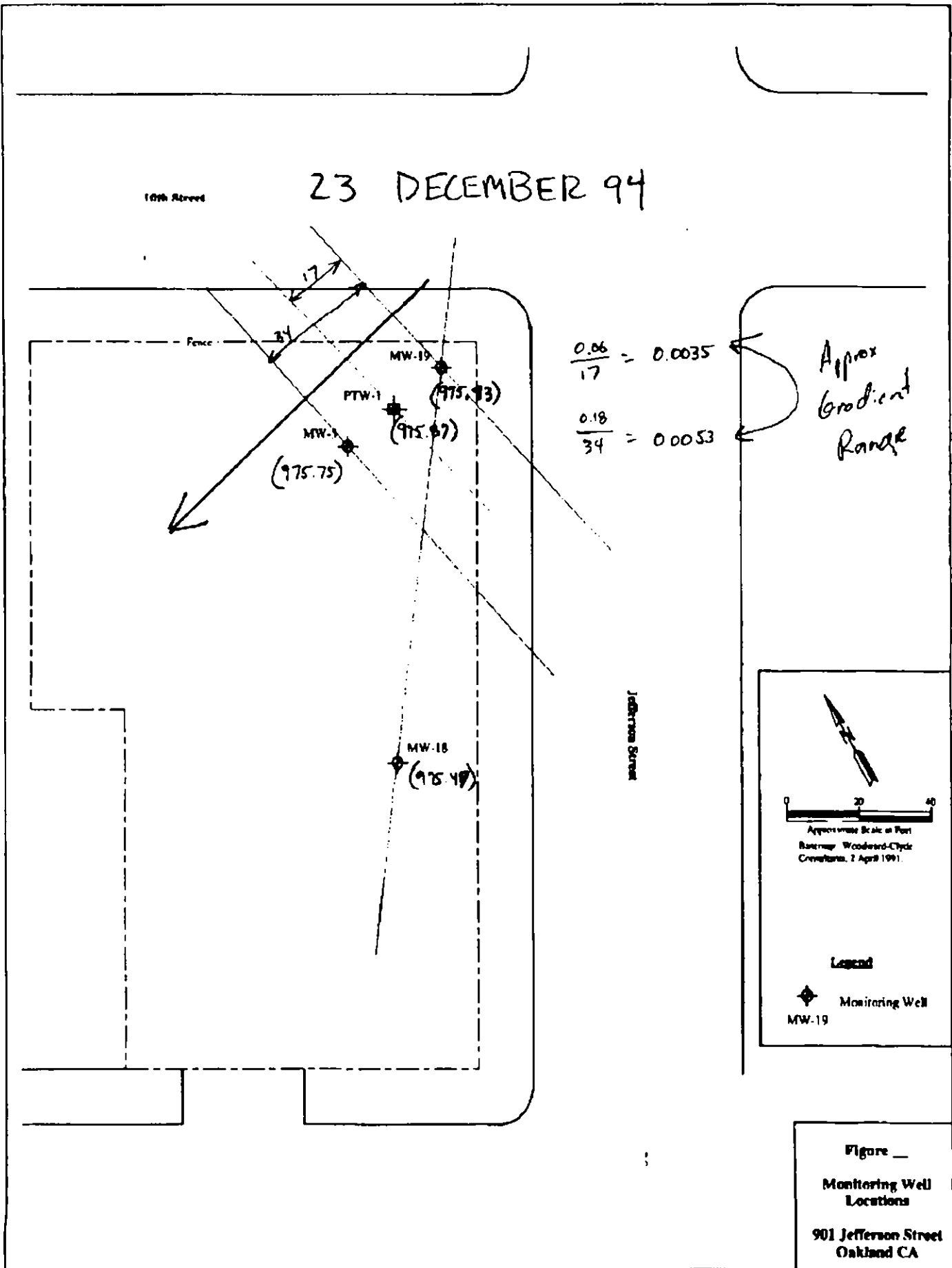
Approx Gradient Range



Legend

◆ Monitoring Well
 MW-19

Figure __
 Monitoring Well
 Locations
 901 Jefferson Street
 Oakland CA



17 FEB 95

10th Street

Gradient

$$\frac{0.23}{17} = 0.0135$$

$$\frac{0.73}{54} = 0.0097$$

Approx Gradient Range

Fence

MW-18

(76.87)

MW-19

(977.58)

PTW-1

(977.33)

MW-5

(977.23)

Jefferson Street



Approximate Scale in Feet
Source: Woodward-Clyde
Consultants, 2 April 1991

Legend

◆ Monitoring Well
MW-19

Figure

Monitoring Well Locations
901 Jefferson Street
Oakland CA

18 APRIL 95

10th Street

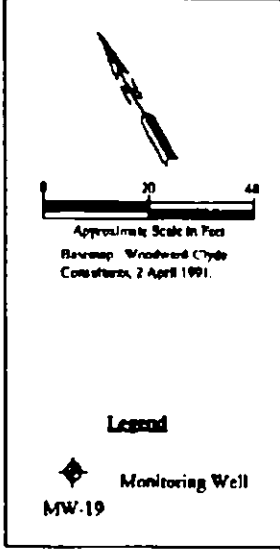
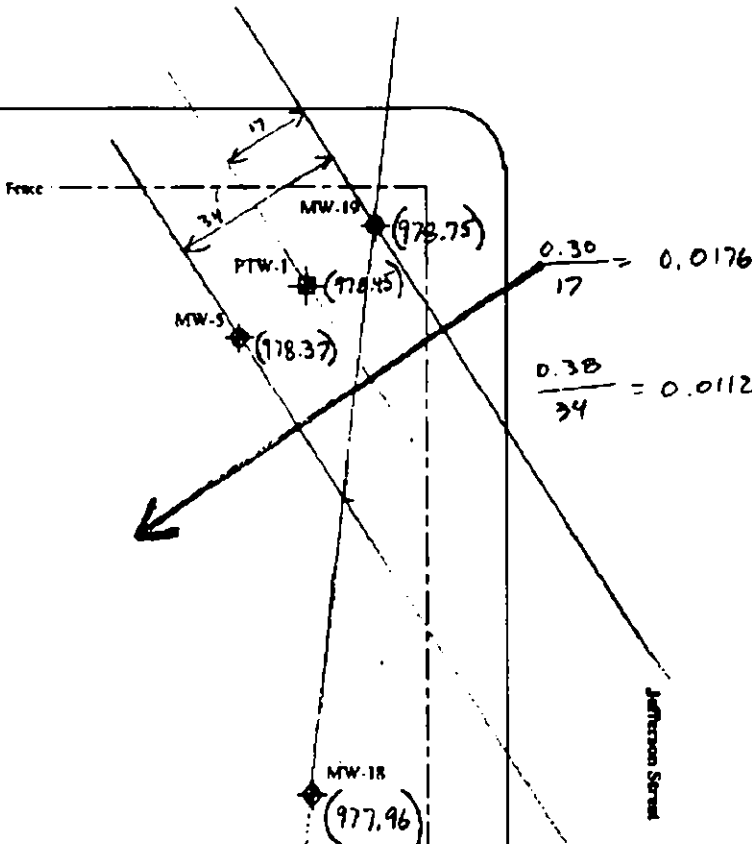


Figure —
 Monitoring Well Locations
 901 Jefferson Street
 Oakland CA