



PACIFIC ENVIRONMENTAL GROUP INC.

FACSIMILE TRANSMITTAL

DATE: 2/15/96 PROJECT NO.: 920-013.9A

TO: Susan Hugo FAX NO.: (510) 337-9335
Alameda County - Env. Health Dept.

FROM: Roger Hoffmore

IF YOU HAVE ANY PROBLEMS RECEIVING THIS FACSIMILE, PLEASE CALL (916) 858 - 2350

SHEETS TO FOLLOW COVER PAGE

3

COMMENTS: Susan -
As we discussed earlier today, here is the work plan for 5775 Broadway, Oakland - hard copy will follow in the mail.
Please call with any questions.

Thanks!
- Roger



PACIFIC ENVIRONMENTAL GROUP, INC.

February 15, 1996
Project 920-013.9A

Ms. Susan L. Hugo
Alameda County Health Care Services
1131 Harbor Bay Parkway, Room 250
Alameda, California 94502-6577

Re: Work Plan for Well Abandonment
Former Chevron U.S.A. Service Station 9-3575
5775 Broadway
Oakland, California

Dear Ms. Hugo:

This letter, prepared by Pacific Environmental Group, Inc. (PACIFIC) for Chevron U.S.A. Products Company (Chevron), presents a work plan for the proposed abandonment of Wells MW-1 through MW-3 at the subject site (Figure 1, by Cambria Environmental Technology, Inc.). This work plan is presented in response to recent discussions with Ms. Susan Hugo of the Alameda County Environmental Health Department (ACEHD), the ACEHD letter regarding case closure, dated February 14, 1996, and the *Case Closure Recommendation Letter* prepared by PACIFIC, dated August 25, 1995.

Monitoring Wells MW-1, MW-2 and MW-3 will be abandoned by drilling out to the total depth of each well. The resulting boreholes will be backfilled from the bottom up with neat cement to grade, in accordance with Bulletin 74-90, California Well Standards, California Department of Water Resources, June 1991. Drilling will be performed by a state-licensed well driller and will be observed by a PACIFIC geologist.

Prior to performing field work at the site, PACIFIC will prepare a Site-Specific Health and Safety Plan required by the Occupational Health and Safety Administration (OSHA) Standard "Hazardous Waste Operations and Emergency Response" guidelines (29 CFR 1910.120). The Site-Specific Health and Safety Plan will be reviewed by the project manager, field staff and contractors prior to beginning field operations at the site.

Applicable permits for well destruction will be obtained from Zone 7 Water Agency (Zone 7) prior to drilling. Field activities have been scheduled for Wednesday,

February 15, 1996
Project No. 920-013.9A

February 21, 1996. Notice has been given to Zone 7 to allow for possible inspection of backfilling activities.

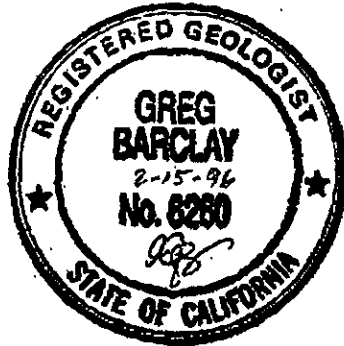
Well debris resulting from the abandonment activities will be temporarily stockpiled onsite, pending laboratory analysis and will be removed from the site by Chevron's disposal contractor, IWM, and disposed of at an appropriate landfill.

Please call our office at (916) 858-2350 if you have any questions or comments regarding this letter.

Sincerely,
Pacific Environmental Group, Inc.

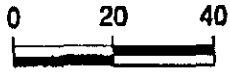
Roger Hoffmore
Roger Hoffmore
Staff Geologist

Greg Barclay
Greg Barclay
Senior Geologist
RG 6260

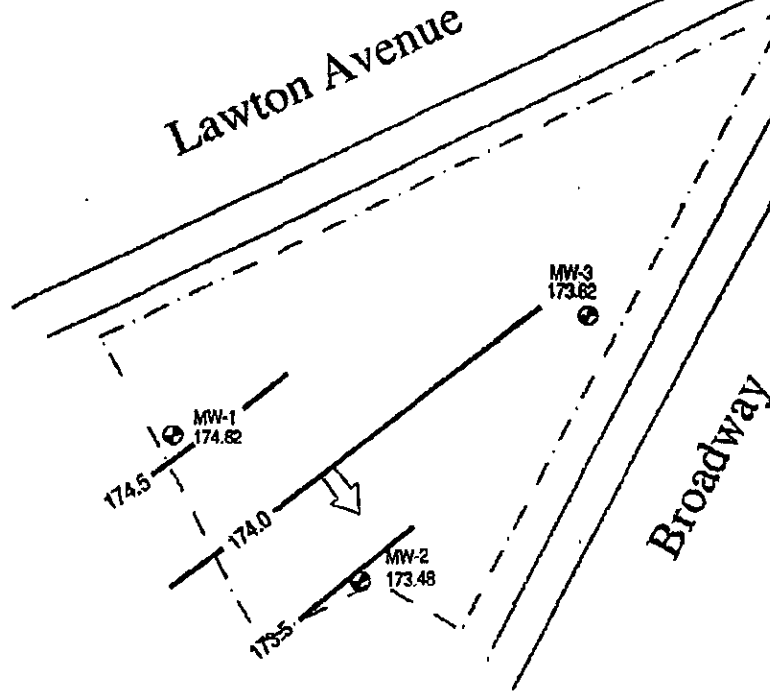


Attachment Figure 1 - Ground Water Elevation, by Cambria Environmental Technology, Inc.

cc: Mr. Kenneth Kan, Chevron U.S.A. Products Company
Mr. Kevin Graves, Regional Water Quality Control Board -
San Francisco Bay Region
Mr. Allen Bray, c/o Roger Hildahl, 6140 Plumas St., Reno, NV 89501



Scale (ft)



Shell-3
NA

LEGEND

- Ground Water Monitoring Well
- Ground Water Elevation (ft-msl)
- Ground Water Elevation Contour
- Ground Water Flow Direction



CAMBRIA
Environmental Technology, Inc.

Former Chevron Station 9-3575
5775 Broadway
Oakland, California

D:\PROJECT\CHEVRON\9-3575\0575-QM.DWG

Ground Water Elevation
November 28, 1995

FIGURE

1