

**ALAMEDA COUNTY ENVIRONMENTAL
HEALTH SERVICES**

ENVIRONMENTAL PROTECTION DIVISION

1131 Harbor Bay Parkway, Suite 250

Alameda, CA 94502-6577

Telephone (510) 567-6700 Fax (510) 337-9335

FAX COVER SHEET

DATE: 6/18, 19 96

TO: DOUG LEE
KEI

FAX # (510) 687-0602

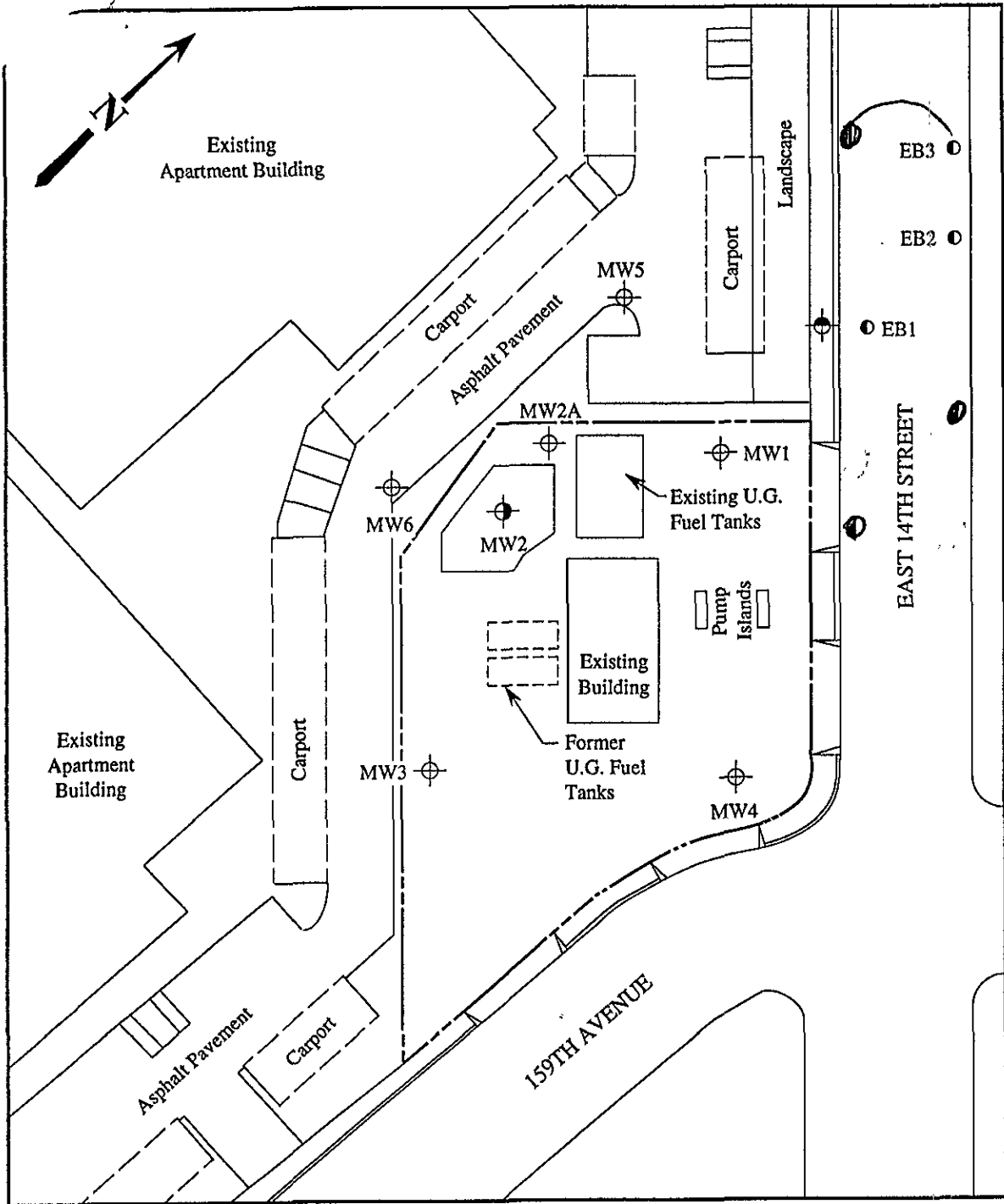
Total number of pages including cover sheet 2

FROM: DALE K. LLETTE

NOTE:

PLEASE RESPOND BY FAX ONLY.

**(SMILE) HAVE A NICE DAY
DO SOMETHING FOR OUR ENVIRONMENT**

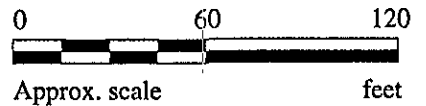


WALGREENS

LEGEND

- ⊕ Monitoring well (existing)
- ⊙ Monitoring well (previously attempted)
- ⊗ Monitoring well (destroyed February 1, 1990)
- Exploratory boring (proposed)

MY THOUGHTS

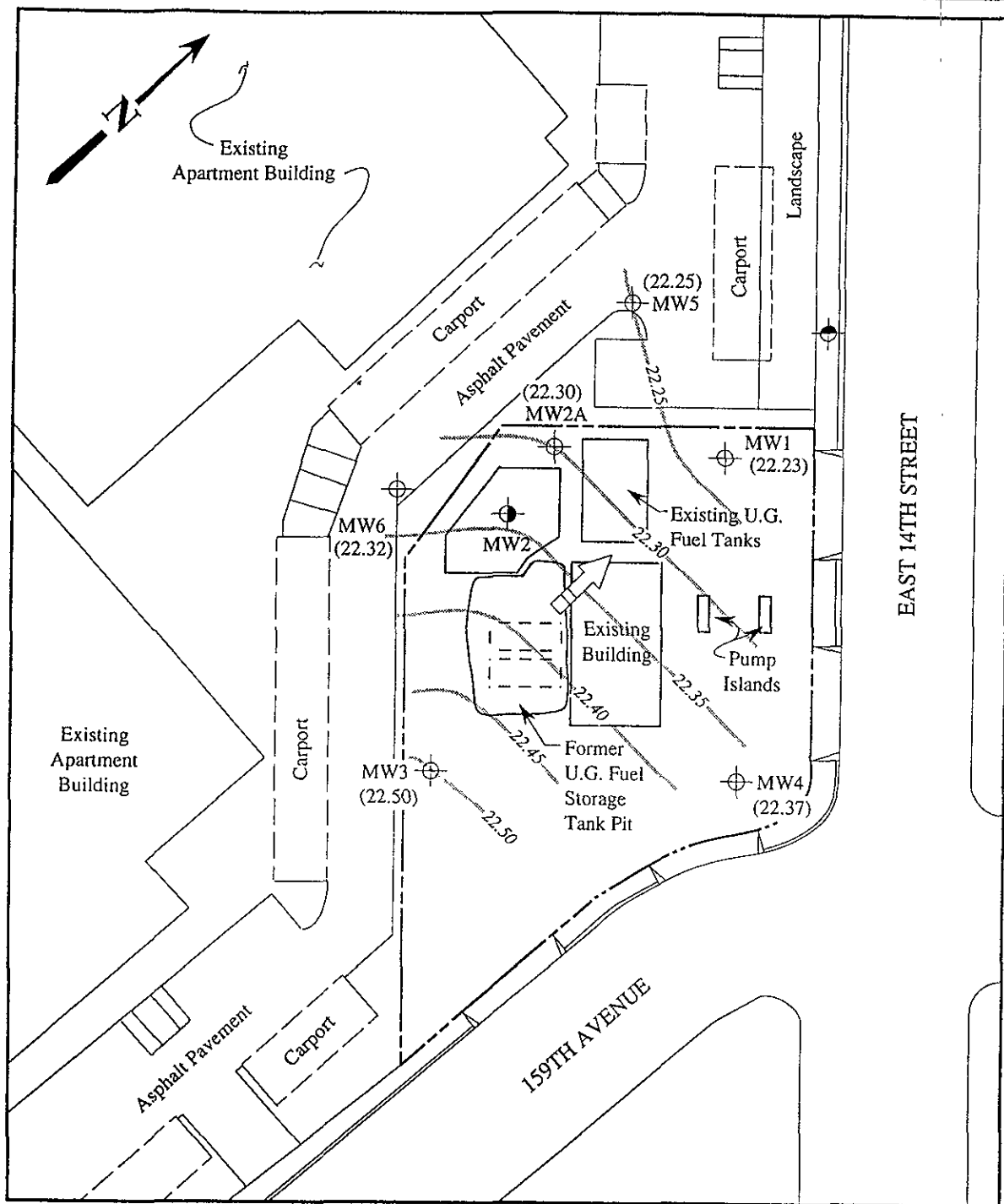


SITE VICINITY MAP



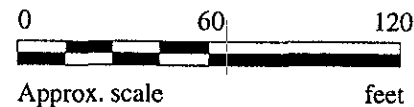
UNOCAL SERVICE STATION #6277
15803 E. 14TH STREET
SAN LEANDRO, CALIFORNIA

FIGURE
1



LEGEND

- ⊕ Monitoring well (existing)
- ⊙ Monitoring well (previously attempted)
- ⊗ Monitoring well (destroyed February 1, 1990)
- () Ground water elevation in feet above Mean Sea Level
- ➔ Direction of ground water flow
- Contours of ground water elevation

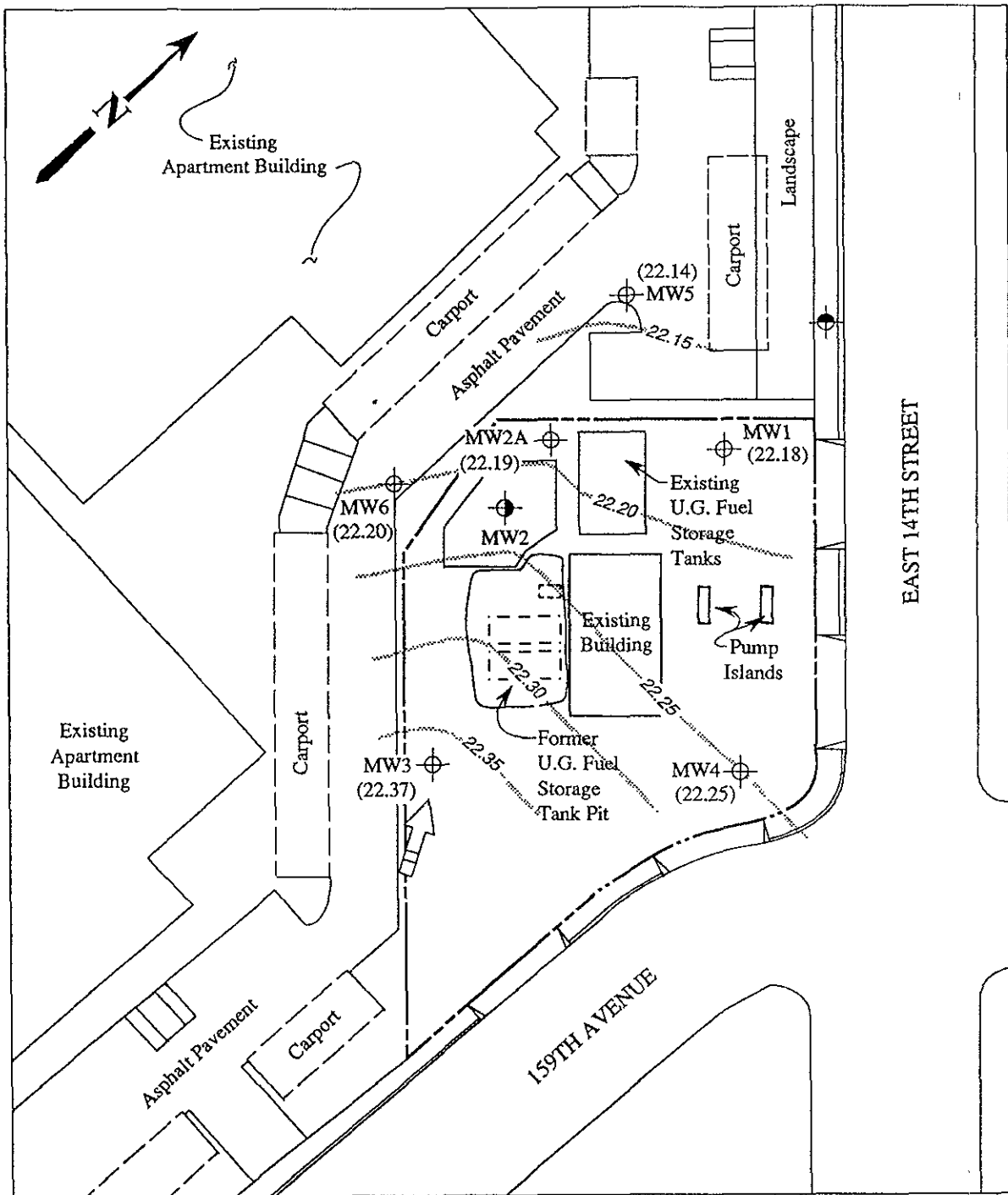


POTENTIOMETRIC SURFACE MAP FOR THE APRIL 4, 1994 MONITORING EVENT

MPDS
SERVICES, INCORPORATED

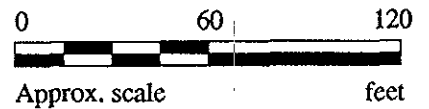
UNOCAL SERVICE STATION #6277
15803 E. 14TH STREET
SAN LEANDRO, CALIFORNIA

FIGURE
1



LEGEND

- ⊕ Monitoring well (existing)
- ⊙ Monitoring well (previously attempted)
- ⊗ Monitoring well (destroyed February 1, 1990)
- () Ground water elevation in feet above Mean Sea Level
- ➔ Direction of ground water flow
- Contours of ground water elevation

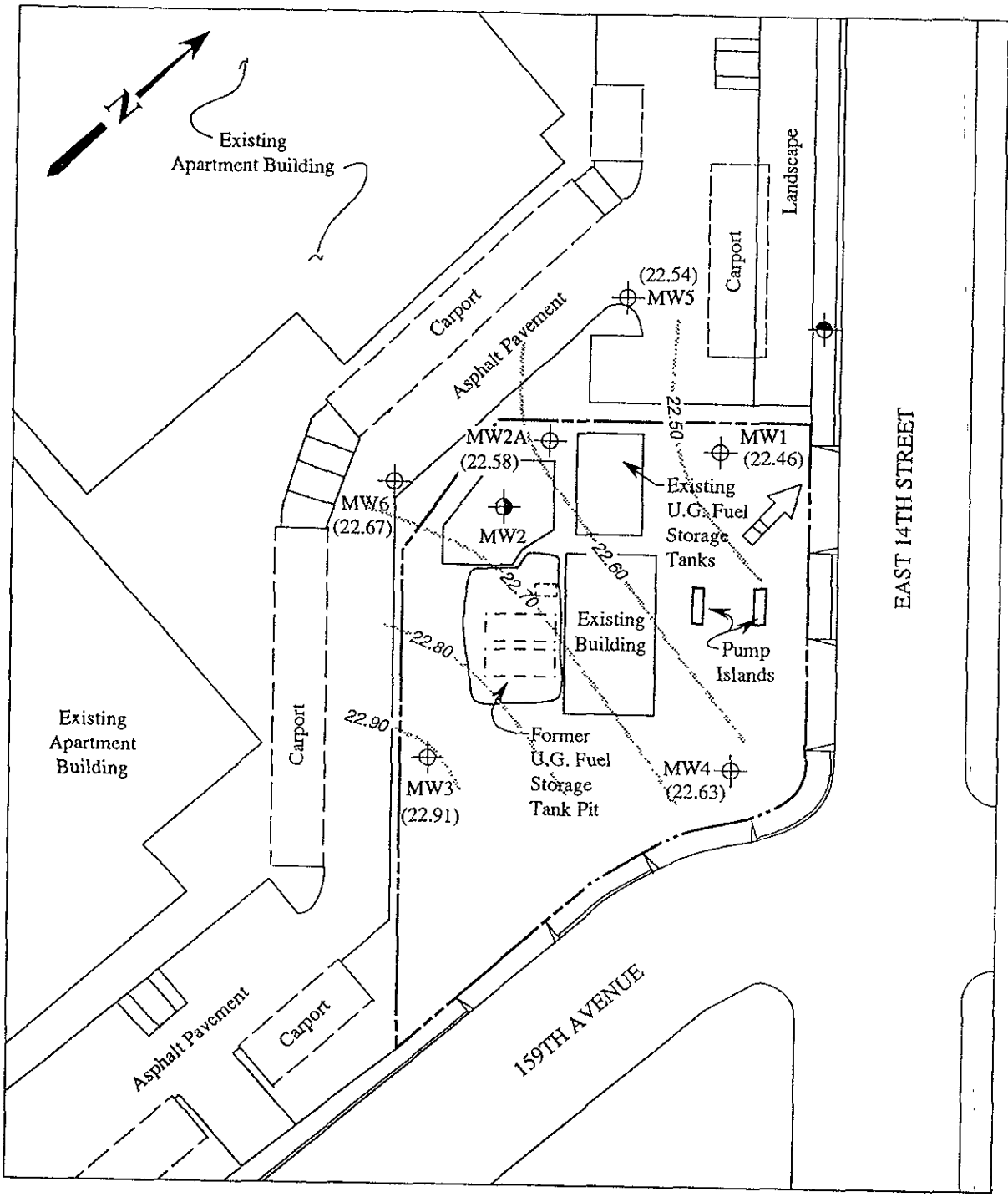


POTENTIOMETRIC SURFACE MAP FOR THE OCTOBER 6, 1993 MONITORING EVENT

**KAPREALIAN ENGINEERING
INCORPORATED**

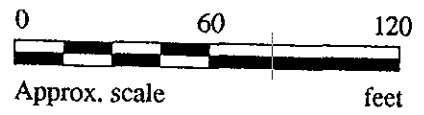
**UNOCAL SERVICE STATION #6277
15803 E. 14TH STREET
SAN LEANDRO, CALIFORNIA**

**FIGURE
1**



LEGEND

- Monitoring well (existing)
- Monitoring well (previously attempted)
- Monitoring well (destroyed February 1, 1990)
- Ground water elevation in feet above Mean Sea Level
- Direction of ground water flow
- Contours of ground water elevation

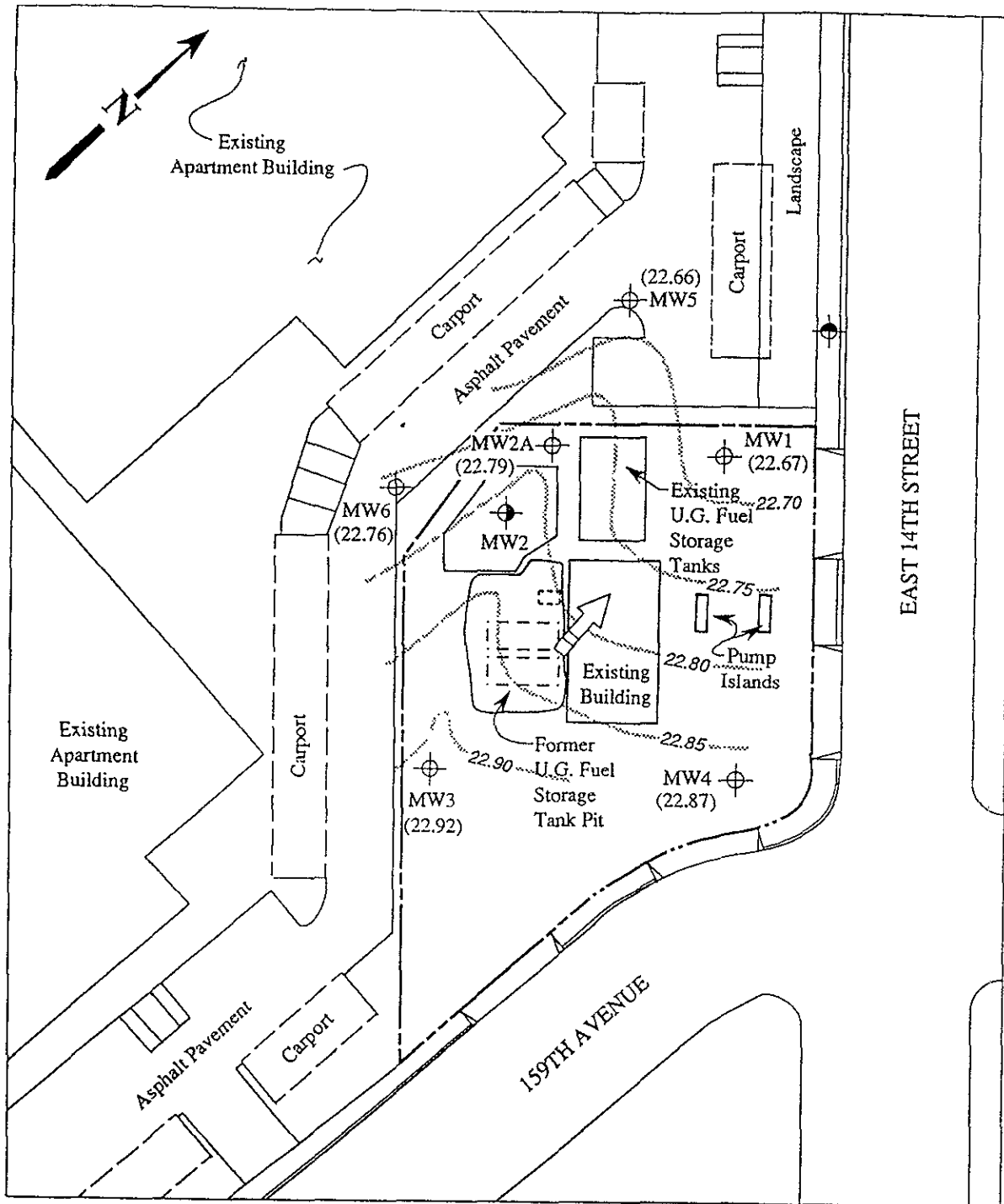


POTENTIOMETRIC SURFACE MAP FOR THE JULY 1, 1993 MONITORING EVENT

**KAPREALIAN ENGINEERING
INCORPORATED**

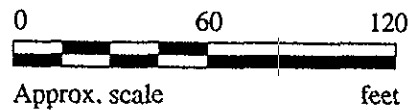
**UNOCAL SERVICE STATION #6277
15803 E. 14TH STREET
SAN LEANDRO, CA**

**FIGURE
1**



LEGEND

- ⊕ Monitoring well (existing)
- ⊙ Monitoring well (previously attempted)
- ⊗ Monitoring well (destroyed February 1, 1990)
- () Ground water elevation in feet above Mean Sea Level
- ➔ Direction of ground water flow
- Contours of ground water elevation

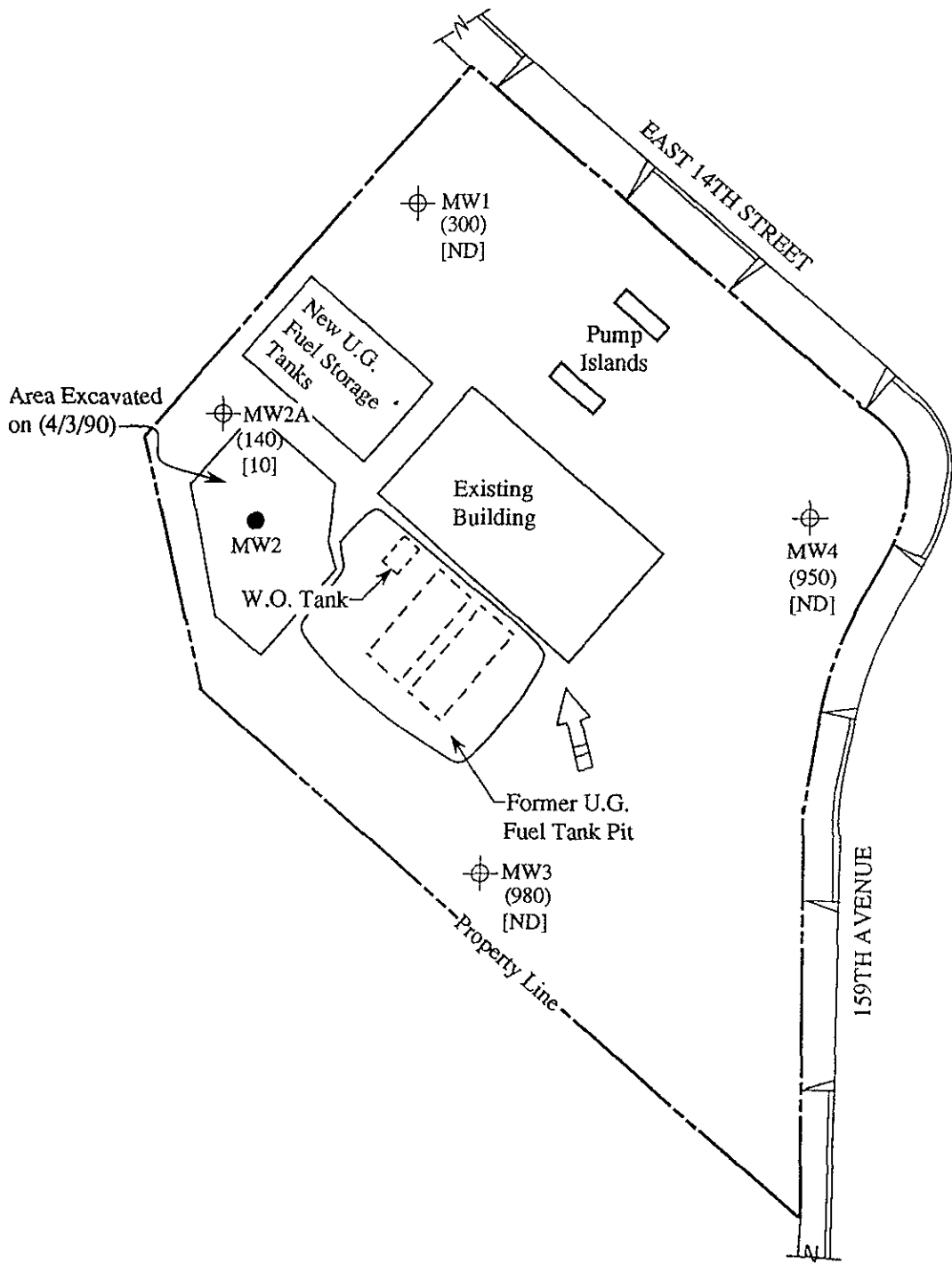


POTENTIOMETRIC SURFACE MAP FOR THE APRIL 2, 1993 MONITORING EVENT


**KAPREALIAN ENGINEERING
 INCORPORATED**

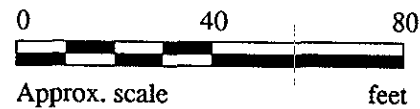
**UNOCAL SERVICE STATION #6277
 15803 E. 14TH STREET
 SAN LEANDRO, CA**

**FIGURE
 1**



LEGEND

- ⊕ Monitoring well
- Monitoring well (destroyed 2/1/90)
- () Concentration of tetrachloroethene
- [] Concentration of trichloroethene
- ➡ Direction of ground water flow

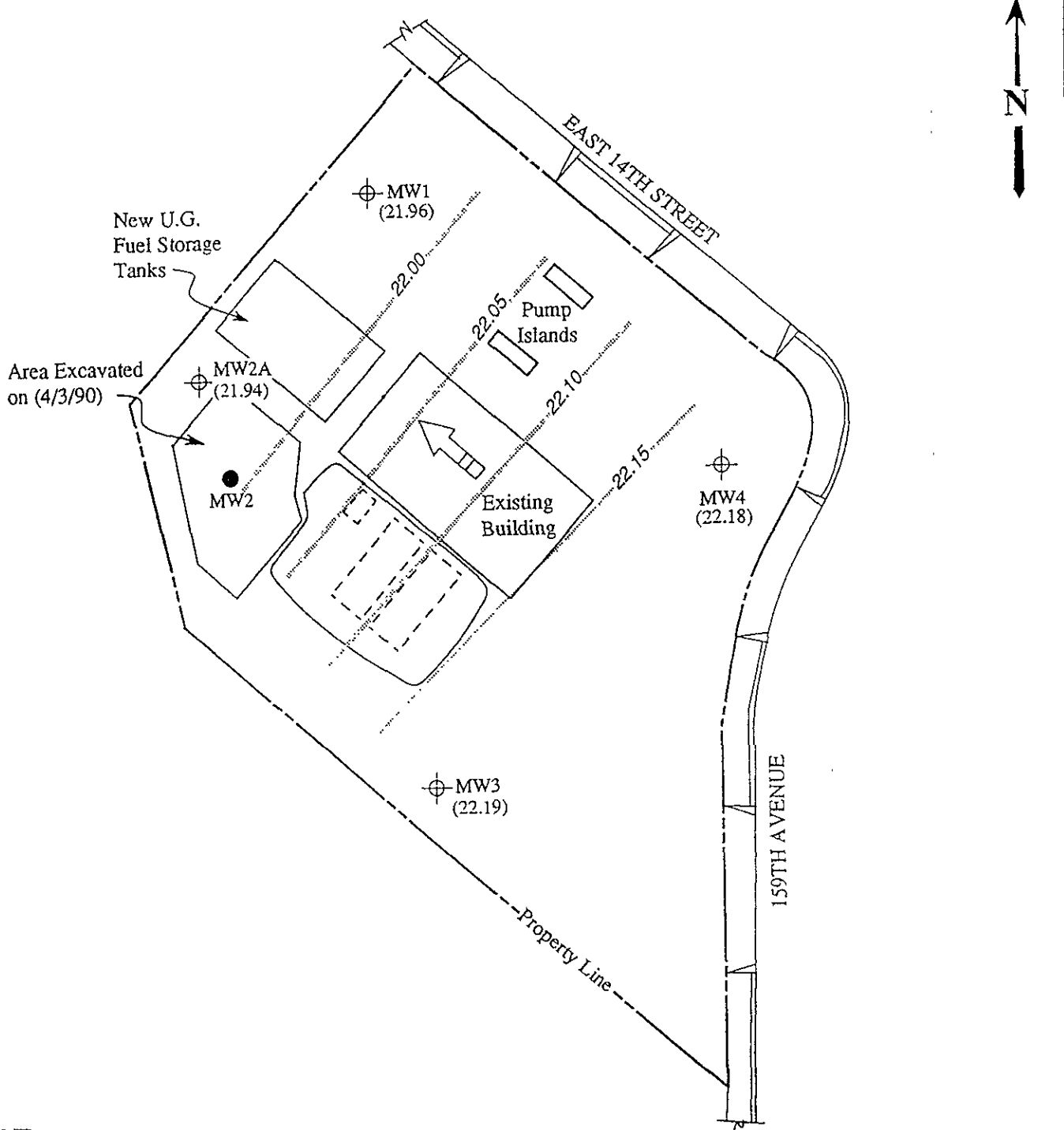


CHLORINATED SOLVENT CONCENTRATIONS IN GROUND WATER ON JANUARY 29, 1993

**KAPREALIAN ENGINEERING
INCORPORATED**

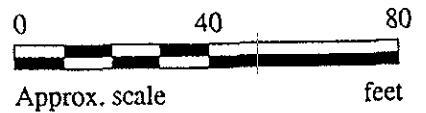
**UNOCAL SERVICE STATION #6277
15803 EAST 14TH STREET
SAN LEANDRO, CA**

**FIGURE
3**



LEGEND

- ⊕ Monitoring well
- Monitoring well (destroyed 2/1/90)
- () Ground water elevation in feet above Mean Sea Level
- ➡ Direction of ground water flow
- Contours of ground water elevation

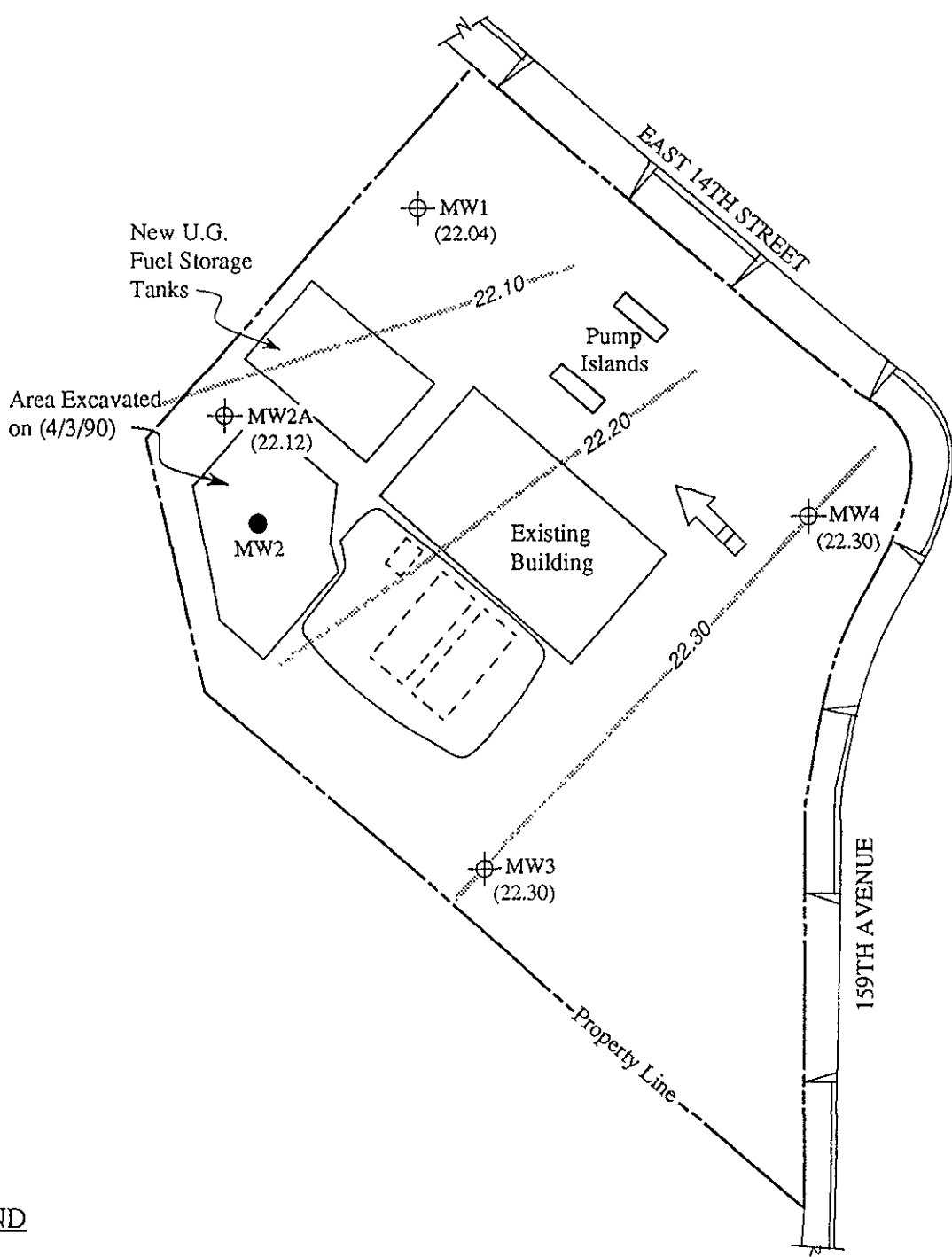


POTENTIOMETRIC SURFACE MAP FOR THE OCTOBER 20, 1992 MONITORING EVENT

**KAPREALIAN ENGINEERING
INCORPORATED**

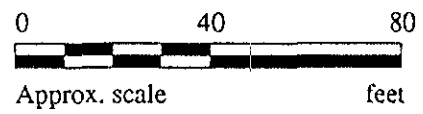
**UNOCAL SERVICE STATION #6277
15803 EAST 14TH STREET
SAN LEANDRO, CA**

**FIGURE
1**



LEGEND

- ⊕ Monitoring well
- Monitoring well (destroyed 2/1/90)
- () Ground water elevation in feet above Mean Sea Level
- ➡ Direction of ground water flow
- - - - Contours of ground water elevation



POTENTIOMETRIC SURFACE MAP FOR THE JULY 20, 1992 MONITORING EVENT



**UNOCAL SERVICE STATION #6277
15803 EAST 14TH STREET
SAN LEANDRO, CA**

**FIGURE
1**

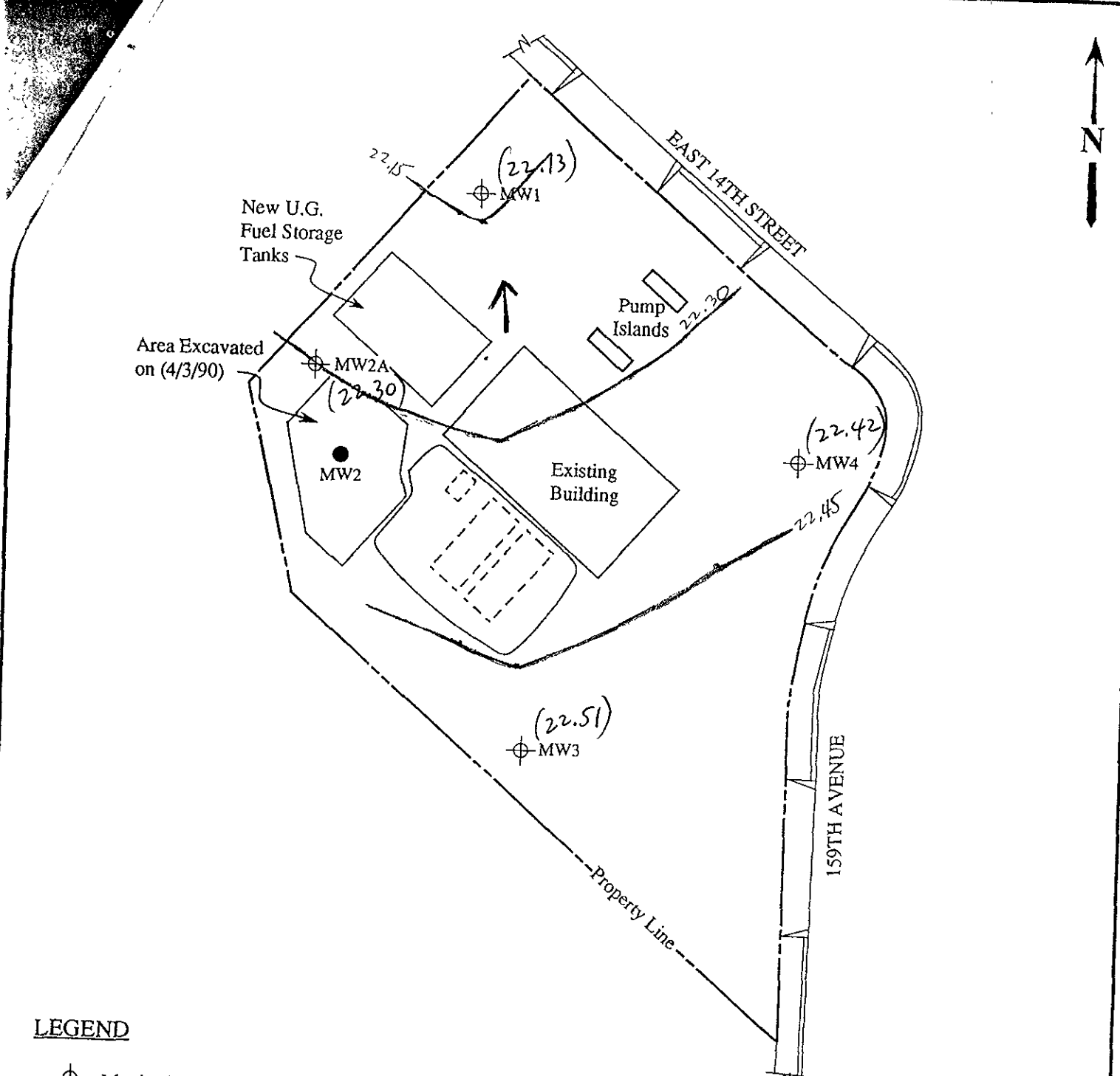
REPORT SUMMARY
ANAMETRIX, INC. (408)432-8192

MR. GARY ZACCOR
ZACCOR CORP.
791 HAMILTON AVE.
MENLO PARK, CA 94025

Workorder # : 9101055
Date Received : 01/08/91
Project ID : 2244 SANTA CLARA
Purchase Order: N/A
Department : PREP
Sub-Department: PREP

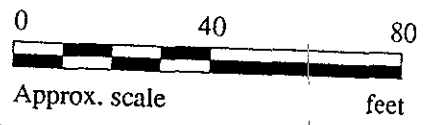
SAMPLE INFORMATION:

ANAMETRIX SAMPLE ID	CLIENT SAMPLE ID	MATRIX	DATE SAMPLED	METHOD
9101055- 1	#1	SOIL	01/08/91	5520EF
9101055- 2	#2	SOIL	01/08/91	5520EF



LEGEND

- ⊕ Monitoring well
- Monitoring well (destroyed 2/1/90)
- () Ground water elevation in feet above Mean Sea Level
- ➡ Direction of ground water flow
- ⋯ Contours of ground water elevation

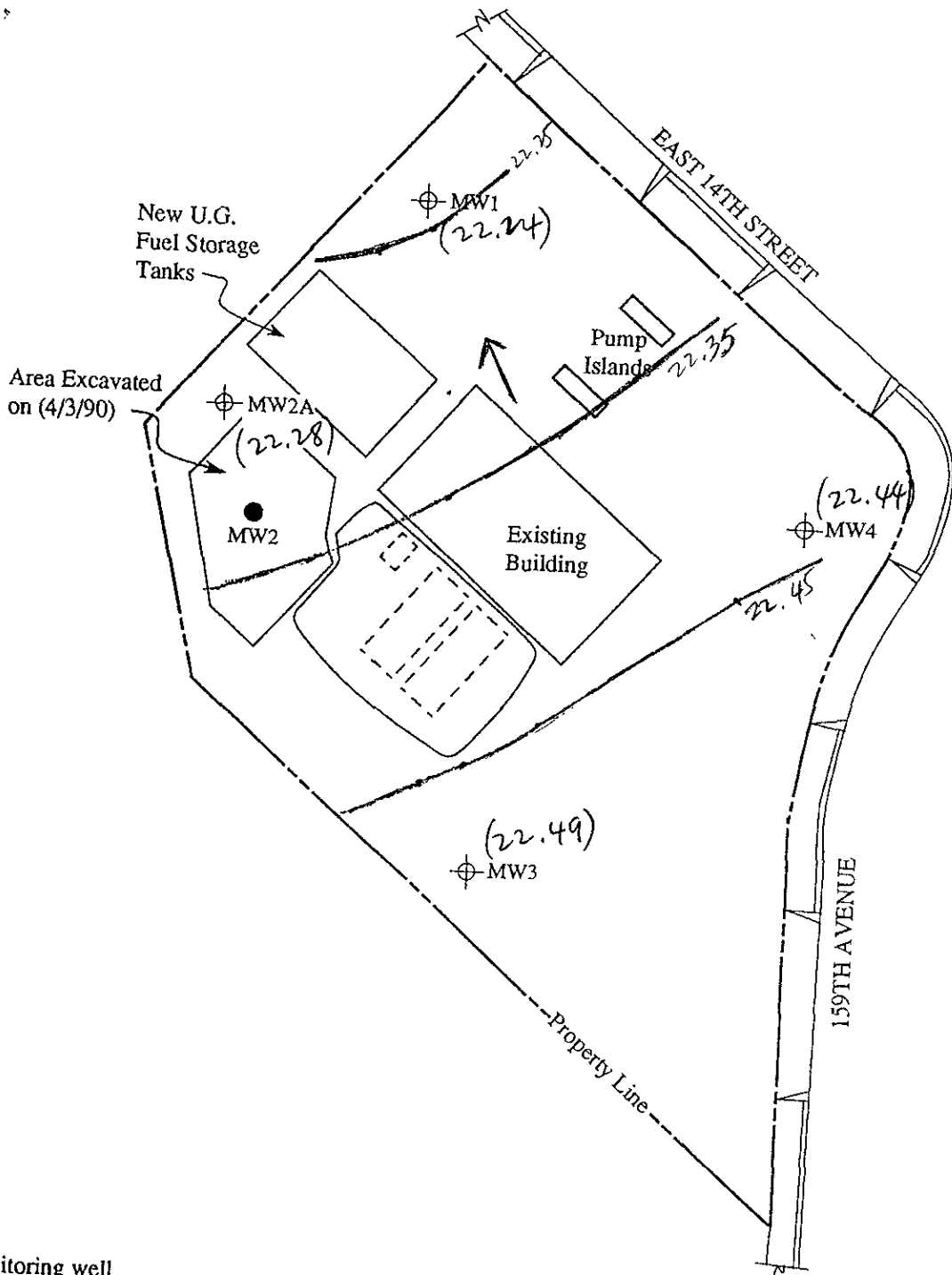


POTENTIOMETRIC SURFACE MAP FOR THE *June 18, 1992* MONITORING EVENT

**KAPREALIAN ENGINEERING
INCORPORATED**

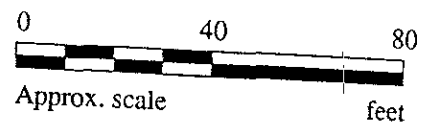
UNOCAL SERVICE STATION #6277
15803 EAST 14TH STREET
SAN LEANDRO, CA

FIGURE
1



LEGEND

- ⊕ Monitoring well
- Monitoring well (destroyed 2/1/90)
- () Ground water elevation in feet above Mean Sea Level
- ➔ Direction of ground water flow
- Contours of ground water elevation

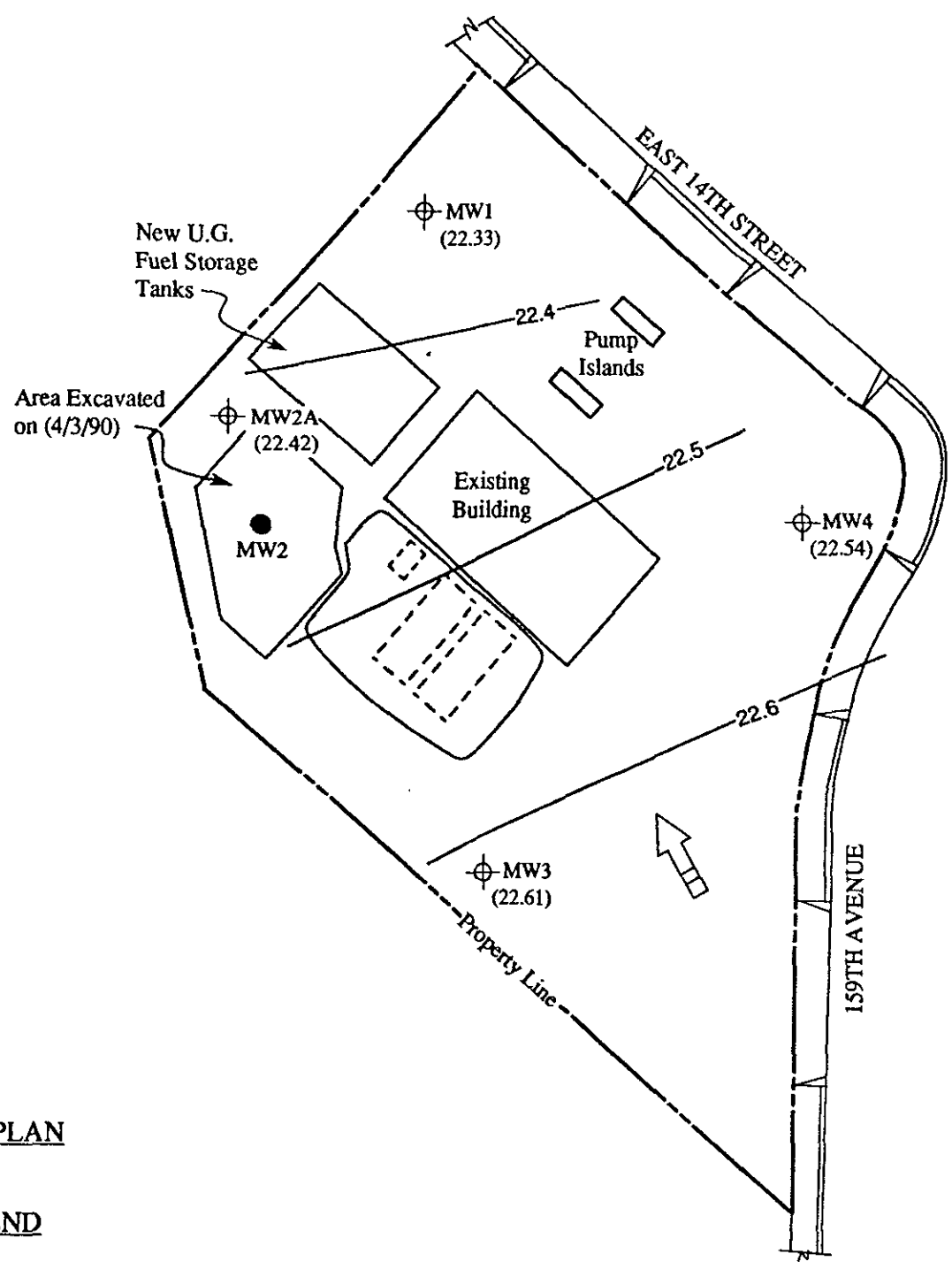


POTENTIOMETRIC SURFACE MAP FOR THE *March 22, 1992* MONITORING EVENT

**KAPREALIAN ENGINEERING
INCORPORATED**

UNOCAL SERVICE STATION #6277
15803 EAST 14TH STREET
SAN LEANDRO, CA

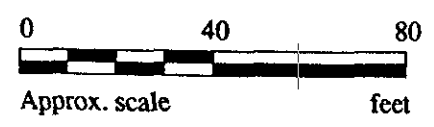
FIGURE
1



SITE PLAN

LEGEND

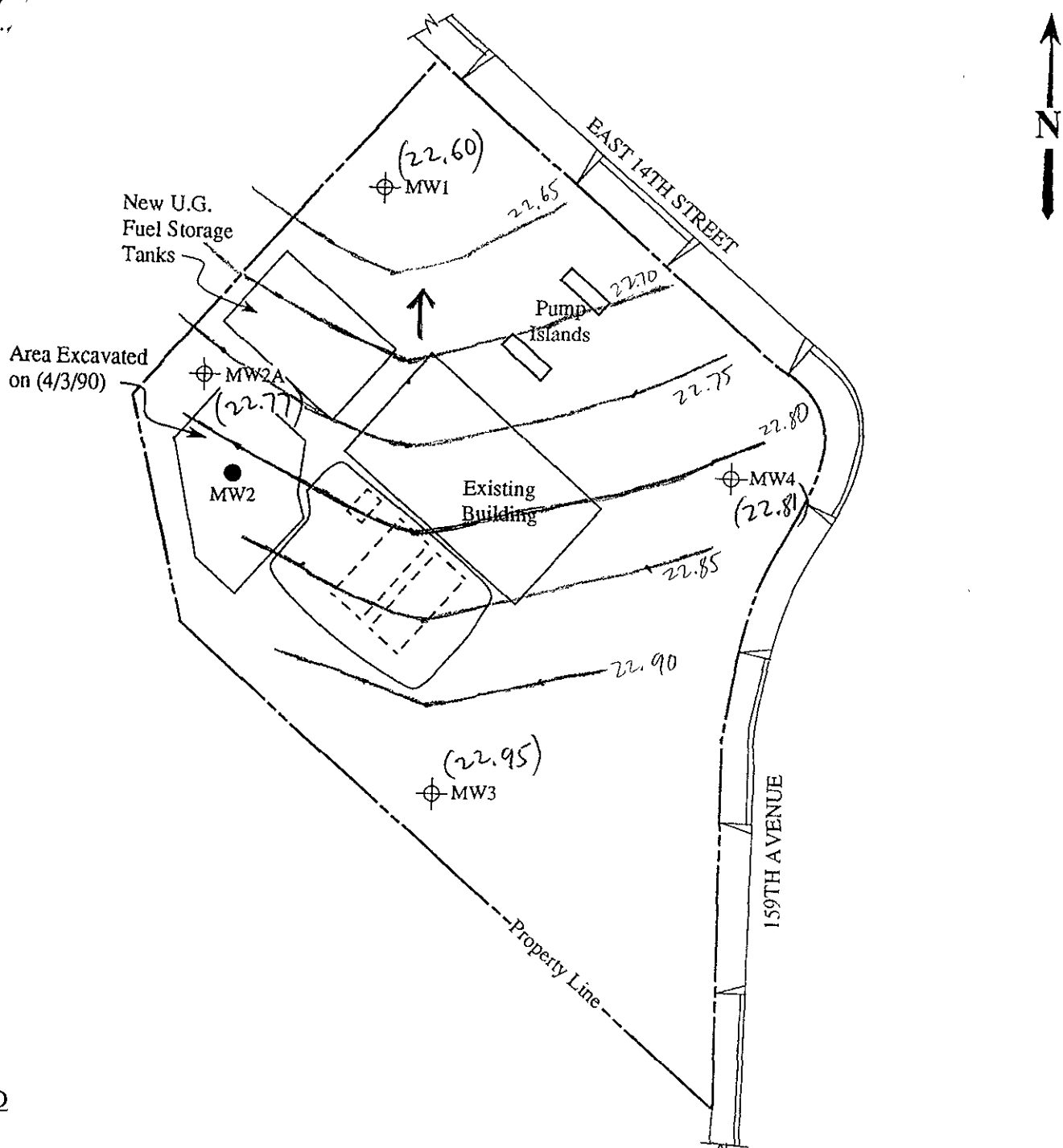
- Monitoring well
- Monitoring well (destroyed 2/1/90)
- Ground water elevation in feet above Mean Sea Level on 4/23/92
- Direction of ground water flow
- Contours of ground water elevation



**KAPREALIAN ENGINEERING
INCORPORATED**

**UNOCAL SERVICE STATION #6277
15803 EAST 14TH STREET
SAN LEANDRO, CA**

**FIGURE
1**



LEGEND

- ⊕ Monitoring well
- Monitoring well (destroyed 2/1/90)
- () Ground water elevation in feet above Mean Sea Level
- ➔ Direction of ground water flow
- Contours of ground water elevation

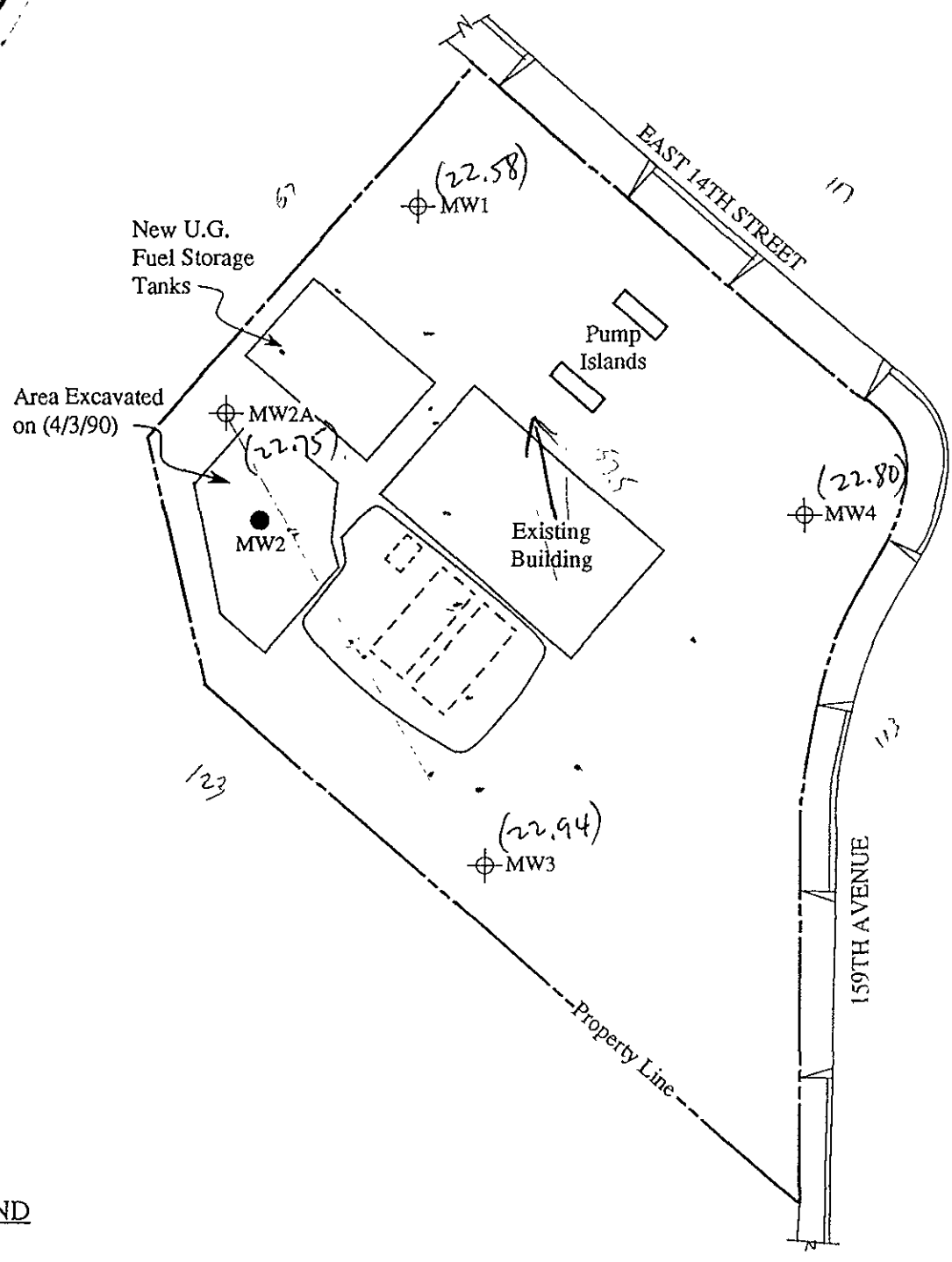


POTENTIOMETRIC SURFACE MAP FOR THE *March 20, 1992* MONITORING EVENT

**KAPREALIAN ENGINEERING
INCORPORATED**



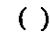
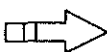
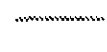
**UNOCAL SERVICE STATION #6277
15803 EAST 14TH STREET
SAN LEANDRO, CA**

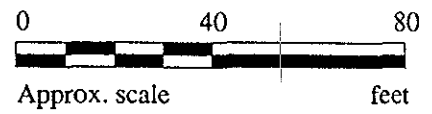
**FIGURE
1**



22.90
22.85
22.80
22.75
22.70
22.65

LEGEND

-  Monitoring well
-  Monitoring well (destroyed 2/1/90)
-  () Ground water elevation in feet above Mean Sea Level
-  Direction of ground water flow
-  Contours of ground water elevation



POTENTIOMETRIC SURFACE MAP FOR THE *February 26, 1992* MONITORING EVENT


KAPREALIAN ENGINEERING
INCORPORATED

UNOCAL SERVICE STATION #6277
15803 EAST 14TH STREET
SAN LEANDRO, CA

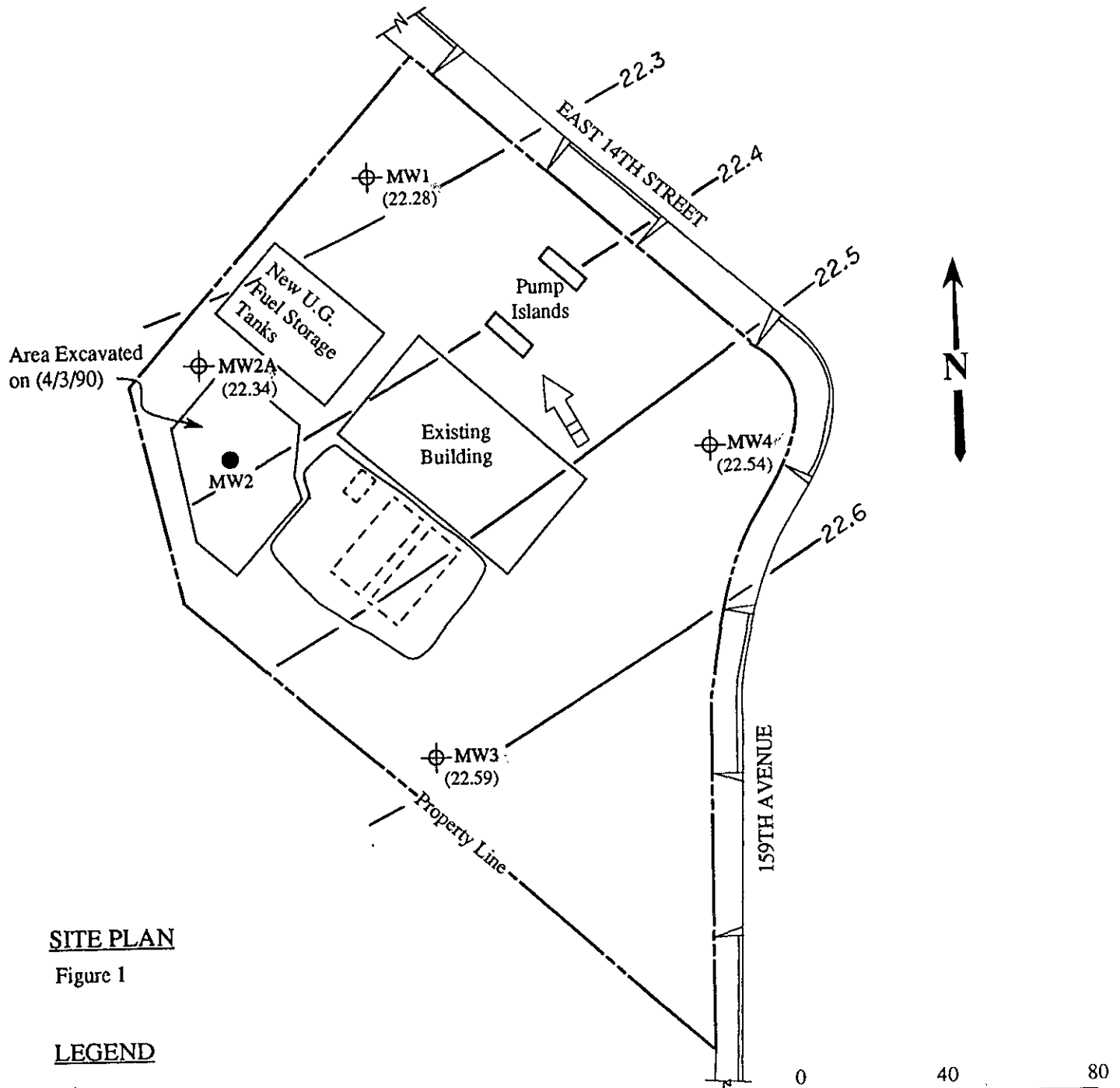
FIGURE
1



KAPREALIAN ENGINEERING, INC.

Consulting Engineers

P.O. BOX 996 • BENICIA, CA 94510
(707) 746-6915 • (707) 746-6916 • FAX (707) 746-5581

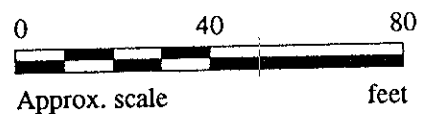


SITE PLAN

Figure 1

LEGEND

- Monitoring well
- Monitoring well (destroyed 2/1/90)
- () Ground water elevation in feet above Mean Sea Level on 1/13/92
- Direction of ground water flow
- Contours of ground water elevation



Unocal Service Station #6277
15803 East 14th Street
San Leandro, CA

ANALYSIS DATA SHEET - TOTAL PETROLEUM HYDROCARBONS AS DIESEL
ANAMETRIX, INC. (408) 432-8192

Anamatrix W.O.: 9101055
Matrix : SOIL
Date Sampled : 01/08/91
Date Extracted: 01/09/91

Project Number : 2244 Santa Clara
Date released : 01/11/91
Instrument I.D.: HP19

Anamatrix I.D.	Client I.D.	Date Analyzed	Reporting Limit (mg/Kg)	Amount Found (mg/Kg)
9101055-01	#1	01/09/91	10	ND
9101055-02	#2	01/09/91	10	ND
DSBL010991	Method Blank	01/09/91	10	ND

ND - Not detected at or above the practical quantitation limit for the method.
TPHd - Total Petroleum Hydrocarbons as diesel is determined by GCFID following sample extraction by EPA Method 3550.

All testing procedures follow California Department of Health Services (Cal-DHS) approved methods.

[Signature] 1/14/91
Analyst Date

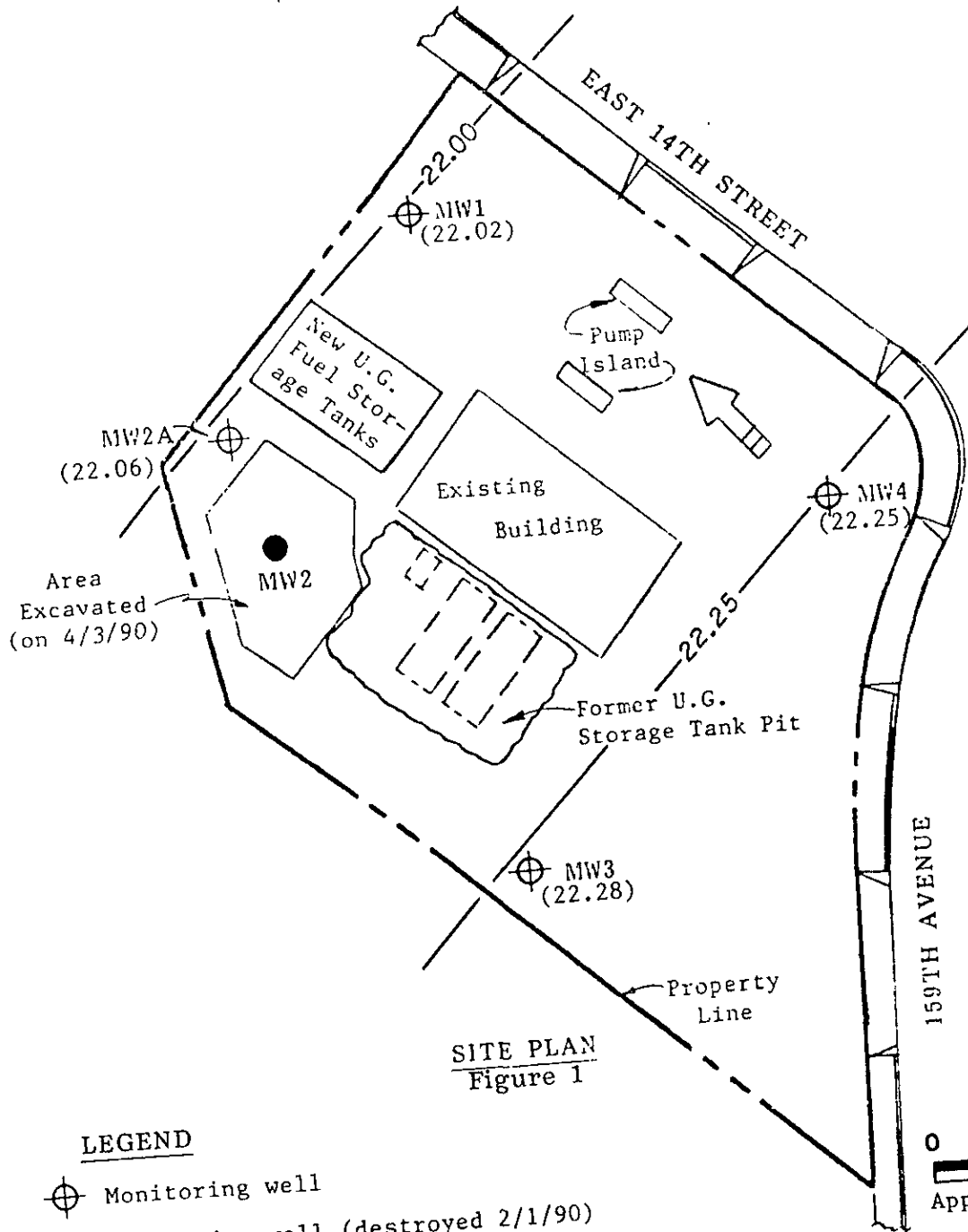
Cheryl Balmer 1/14/91
Supervisor Date



KAPREALIAN ENGINEERING, INC.

Consulting Engineers

P.O. BOX 996 • BENICIA, CA 94510
(707) 746-6915 • (707) 746-6916 • FAX: (707) 746-5581



SITE PLAN
Figure 1

LEGEND

- Monitoring well
- Monitoring well (destroyed 2/1/90)
- () Water table elevation in feet above Mean Sea Level on 9/10/91
- Contours of water table elevation
- Ground water flow direction

Unocal S/S #6277
15803 E. 14th Street
San Leandro, CA

BORING LOCATION 4695 Thornton Ave., Fremont, CA (S-D)		ELEVATION AND DATUM 41.9' MSL	
DRILLING AGENCY Baylands Drilling	DRILLER Tom Schmidt	DATE STARTED 5/10/89 DATE FINISHED 5/11/89	
DRILLING EQUIPMENT CME 75		COMPLETION DEPTH 62.7	SAMPLER continuous
DRILLING METHOD 8" Hollow stem auger	DRILL BIT	NO. OF SAMPLES: DIST. 14	UNDIST.
LOGGED BY: T. Rogers	WATER LEVEL	FIRST 30'	COMPL. 24 HRS.

CHECKED BY:

Depth (feet)	Samples	Blows	MATERIAL DESCRIPTION	USCS	Moisture Content	Dry Density pcf
5	1		4.5 to 5.9 ft. CLAYEY SILT slightly plastic (<10% clay), brown, occasional (rare) pebble homogenous, massive, one thin oxidized stringer			
10	2		9.0 to 10.2 ft. CLAYEY SILT similar to above, more yellow, rootlet holes common in upper portion, some thin, white rootlets 3/4 way down sample			
15	3		14.0 to 15.7 ft. SILTY SAND very fine grained sand, dark yellowish-brown, some gray mottling around root holes, dry, massive, homogenous, few to common root holes 15.7 to 18.2 ft. SILTY SAND very fine to fine grained sand, dry, homogenous, dark yellowish brown, slightly more yellow than above, gray stringers 1/2" wide, irregular vertical root traces, some rootlet holes in upper part			
20	4		19.0 to 20.1 ft. SILTY SAND very fine to fine grained sand, dry, homogenous as above, gray mottling no longer occurs as vertical stringers			
25	5		24.0 to 24.2 ft. CLAYEY SILT 24.2 to 25.7 ft. SAND- coarse, rare gravel to 1/2", fines downward to medium sand, runny 25.7 to 26.3 SAND- medium grained, gray-brown, well sorted, slightly more silt than above 26.3 ft. SANDY GRAVEL- green-gray clasts to 1"			
30	6		29.0 to 29.6 ft SANDY GRAVEL poorly sorted, clasts to 2", coarse sand, dark brown gray			
35	7		34.0 to 34.5 ft GRAVELLY SAND- coarse sand, poorly sorted, flat clasts to 1/2" 34.5 to 35.2 ft SAND- medium sand, well sorted, dk. gray 35.2 to 35.8 ft SILTY CLAY- non sticky, non plastic to v. slightly plastic, mottled tan/brown and gray, stiff, homogenous			

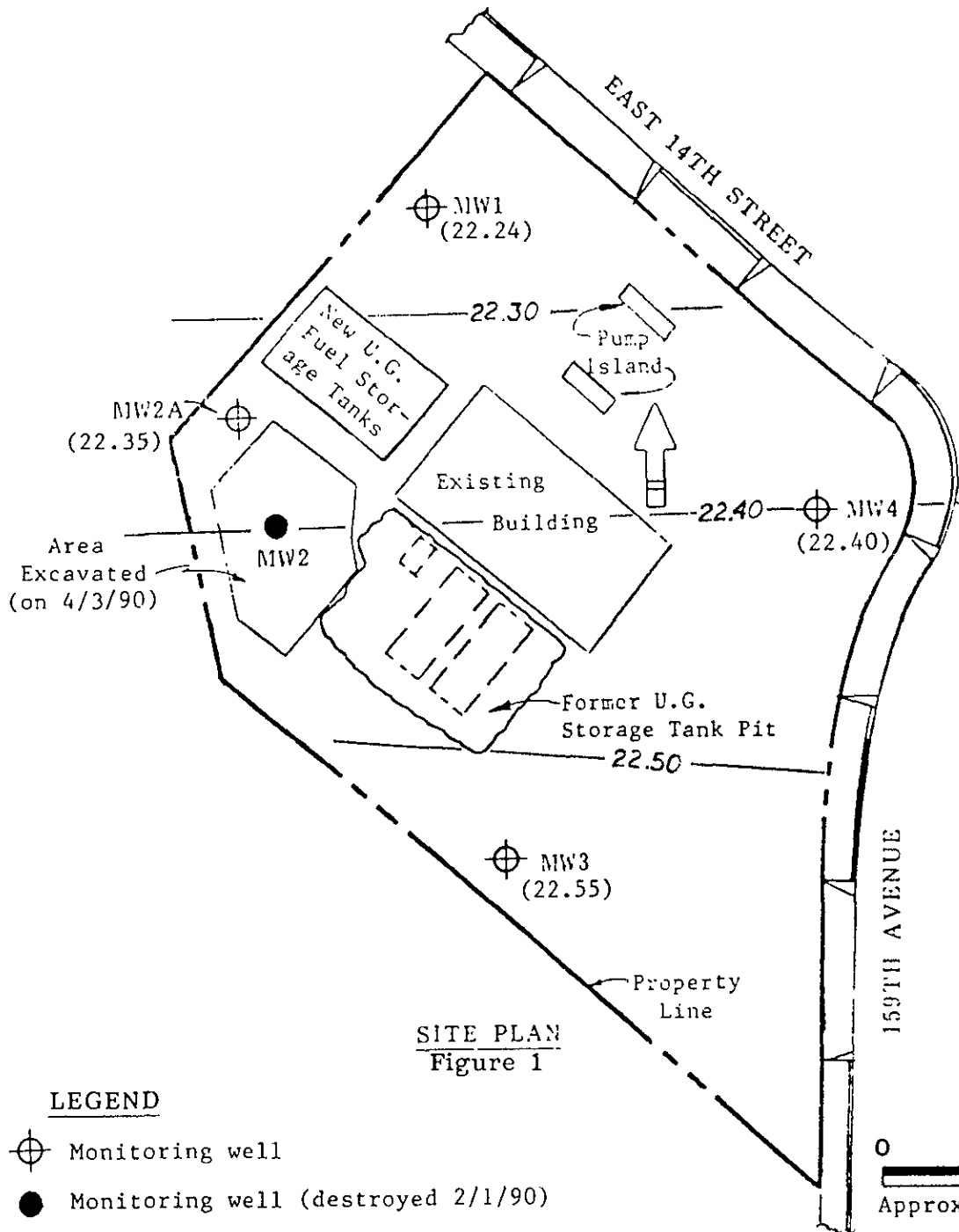


KAPREALIAN ENGINEERING, INC.

Consulting Engineers

P.O. BOX 996 • BENICIA, CA 94510

(707) 746-6915 • (707) 746-6916 • FAX: (707) 746-5581



ANALYSIS DATA SHEET - TOTAL PETROLEUM HYDROCARBONS
(GASOLINE WITH BTEX)
ANAMETRIX, INC. - (408) 432-8192

Anamatrix W.O.: 9101055
Matrix : SOIL
Date Sampled : 01/08/91

Project Number : 2244
Santa Clara
Date Released : 01/11/91

COMPOUNDS	Reporting Limit (mg/Kg)	Sample I.D.# #1	Sample I.D.# #2	Sample I.D.# 21B0109B
Benzene	0.005	ND	ND	ND
Toluene	0.005	ND	ND	ND
Ethylbenzene	0.005	ND	ND	ND
Total Xylenes	0.005	ND	ND	ND
% Surrogate Recovery		124%	77%	101%
Instrument I.D.		HP21	HP21	HP21
Date Analyzed		01/09/91	01/09/91	01/09/91
RLMF		1	1	1

- ND - Not detected at or above the practical quantitation limit for the method.
- TPHg - Total Petroleum Hydrocarbons as gasoline is determined by GCFID using EPA Method 5030.
- BTEX - Benzene, Toluene, Ethylbenzene, and Total Xylenes are determined by modified EPA 8020.
- RLMF - Reporting Limit Multiplication Factor.
Anamatrix control limits for surrogate recovery are 50-150%.

All testing procedures follow California Department of Health Services (Cal-DHS) approved methods.

Iuna Shore 1/8/91
Analyst Date

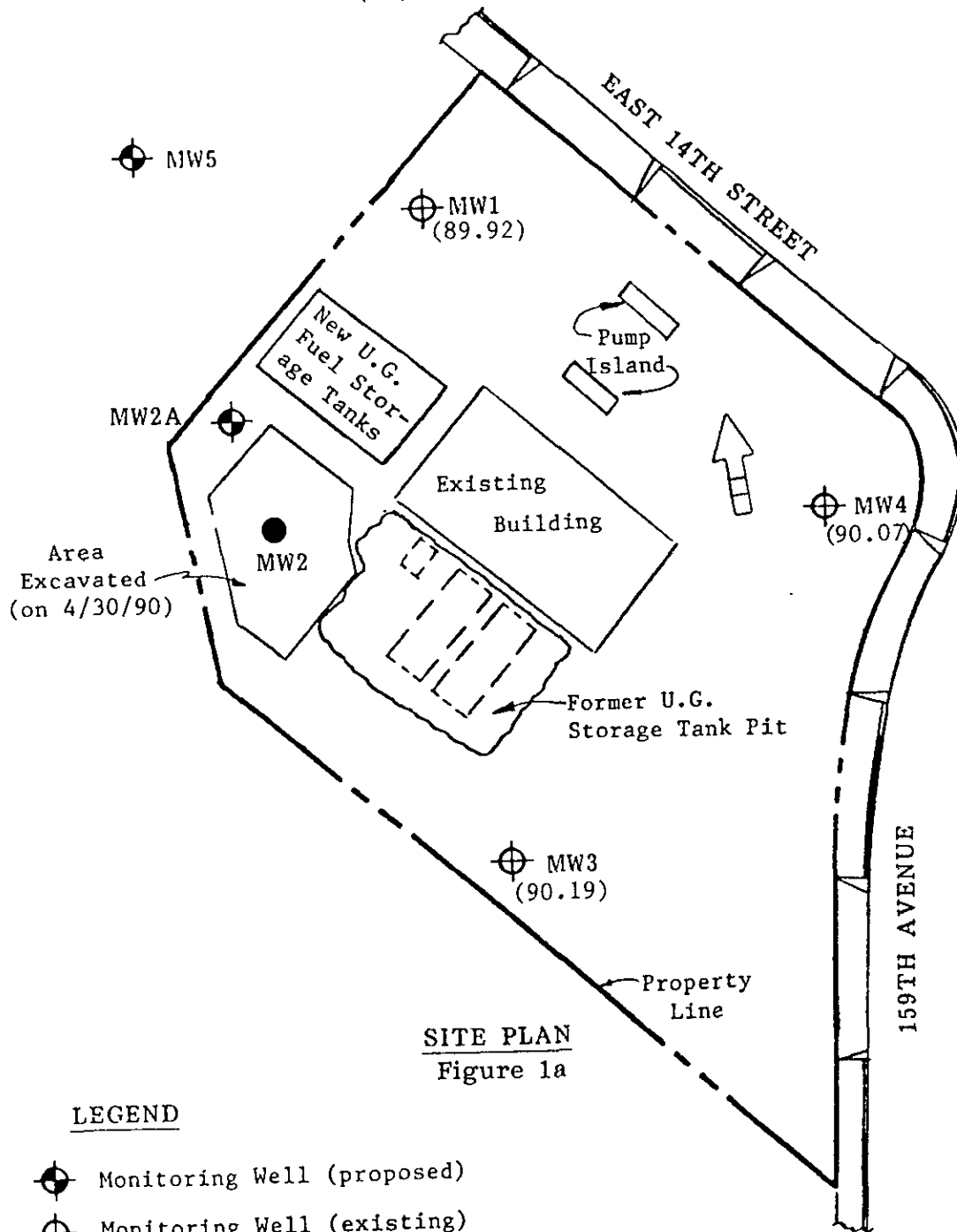
Cheryl Balmer 1/11/91
Supervisor Date



KAPREALIAN ENGINEERING, INC.





Consulting Engineers

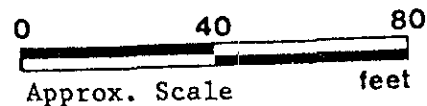
P.O. BOX 996 • BENICIA, CA 94510
(707) 746-6915 • (707) 746-6916 • FAX: (707) 746-5581



SITE PLAN
Figure 1a

LEGEND

-  Monitoring Well (proposed)
-  Monitoring Well (existing)
- () Water table elevation in feet on 12/14/90 . Top of MW4 well cover assumed 100.00' as datum.
-  Ground water flow direction.
-  Monitoring Well (abandoned 2/1/90)



Unocal Service Station #6277
15803 East 14th Street
San Leandro, California

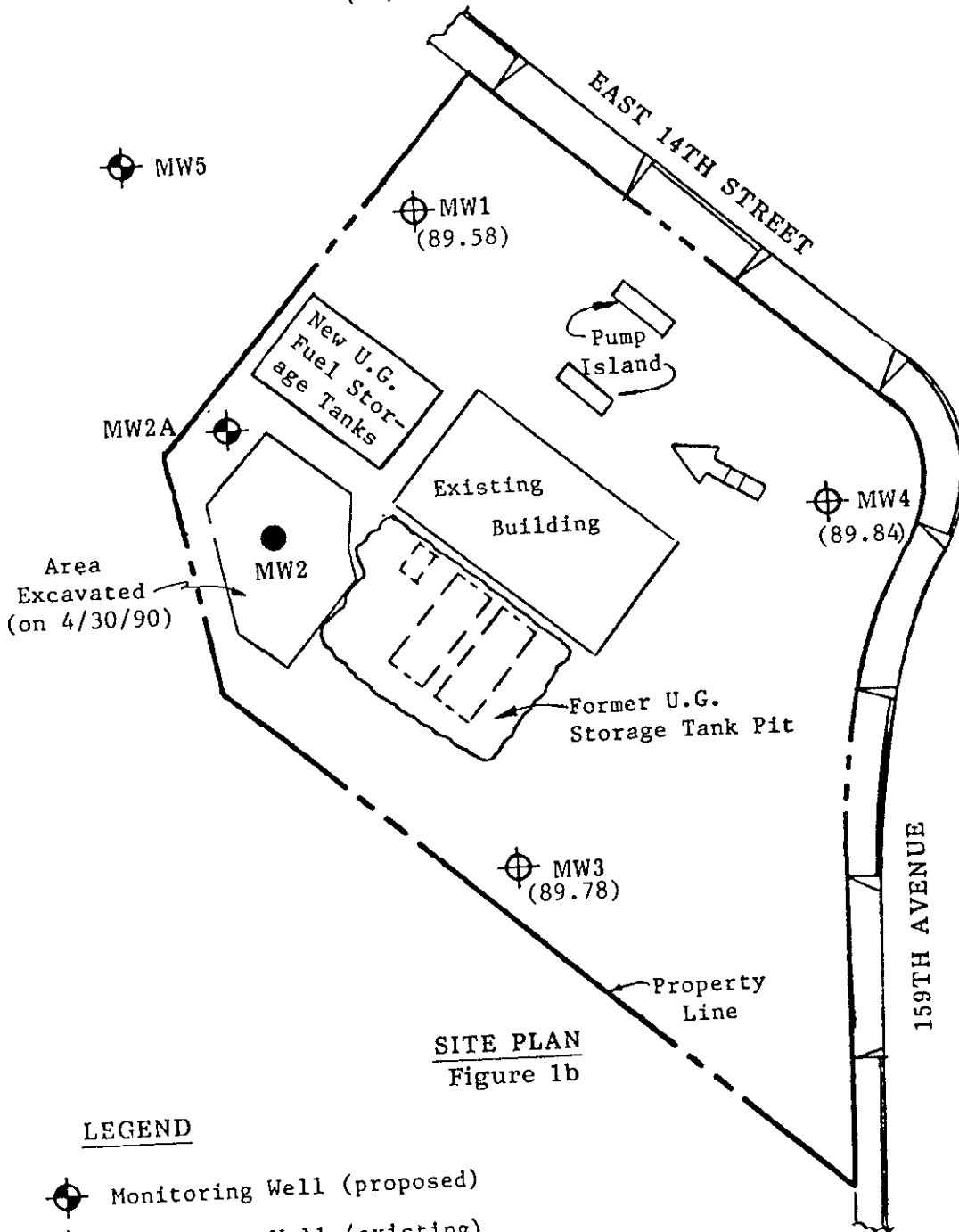
Depth (feet)	Samples	Blows	MATERIAL DESCRIPTION	USCS	Moisture Content	Dry Density pct
40	8		39.0 to 39.5 ft- disturbed, reconditioned material from drilling 39.5 to 41.5 ft CLAY- with some silt, sticky and plastic, firm, med-dk gray with very local tan mottling, homogenous throughout No hydrocarbon odor H Nu = 0 ppm			
45	9		44.0 to 45.6 ft CLAYEY SILT- non sticky, moderately plastic, massive, blue-gray, mottled w/ tan v. stiff 45.6 to 46.8 ft CLAYEY SILT- more plastic, small <i>rubby ped structures, filamentous CaCO3</i> along rootlet burrows, olive gray 46.8 to 48.0 ft SILT- olive gray, some clay, massive, slightly plastic, small CaCO3 blebs, becomes more mottled w/ dk. red brown with depth 48.0 to 48.7 ft SILT- as above, mottled dk. olive green & dk. red brown, small CaCO3 blebs 49.0 to 49.5 ft CLAYEY SILT- slightly sticky, mod. plastic, mod. stiff, olive brown, some small CaCO3 blebs gray mottling, none of red-brown as seen above 49.5 to 50.5 ft CLAYEY SILT- as above, olive gray, with faint small scale lt brown mottling, nonsticky slightly plastic, no CaCO3 50.5 to 51.0 ft CLAYEY SILT- as above, mottling increases to tan-brown vertical, irregular streaks 1/2" wide very fine sand in silt at bottom of sample interval, non plastic, non sticky 51.0 to 51.8 ft CLAYEY SILT- as above, mottling consists of gray, ellipsoidal blebs 1/4" across surrounded by tan-brown v. fine grained sand 51.8 to 52.0 ft GRAVELLY SAND- med. sand, well sorted, small gravel clasts to 1/4", dk. brown No hydrocarbon odor H Nu = 0 ppm			
55	11		54.0 to 58.6 ft SAND- med. grained, dk. brown, well sorted, massive, cohesionless, grain size increases to coarse sand and gravel at bottom of sampled interval, broken clasts to 2" No hydrocarbon odor H Nu = 0 ppm			
60	12		59.0 to 60.0 ft SAND- medium grained, coarsening downwards to coarse sand, dk. brown 60.0 to 60.6 ft SANDY GRAVEL- coarse sand, gravel to 1/2", clean, well sorted No hydrocarbon odor H Nu = 0 ppm 61.2 to 62.7 ft SAND- coarse to v. coarse grained sand, moderately sorted, pebbles (3/8"), pebbles (1/4") towards bottom well sorted, some gravel to 1" at bottom			
65			Total Depth = 62.7 feet			
70						
75						
80						



KAPREALIAN ENGINEERING, INC.

Consulting Engineers

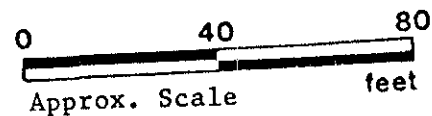
PO BOX 996 • BENICIA, CA 94510
(707) 746-6915 • (707) 746-6916 • FAX: (707) 746-5581



SITE PLAN
Figure 1b

LEGEND

- Monitoring Well (proposed)
- Monitoring Well (existing)
- () Water table elevation in feet on 11/15/90. Top of MW4 well cover assumed 100.00' as datum.
- Ground water flow direction.
- Monitoring Well (abandoned 2/1/90)



Unocal Service Station #6277
15803 East 14th Street
San Leandro, California

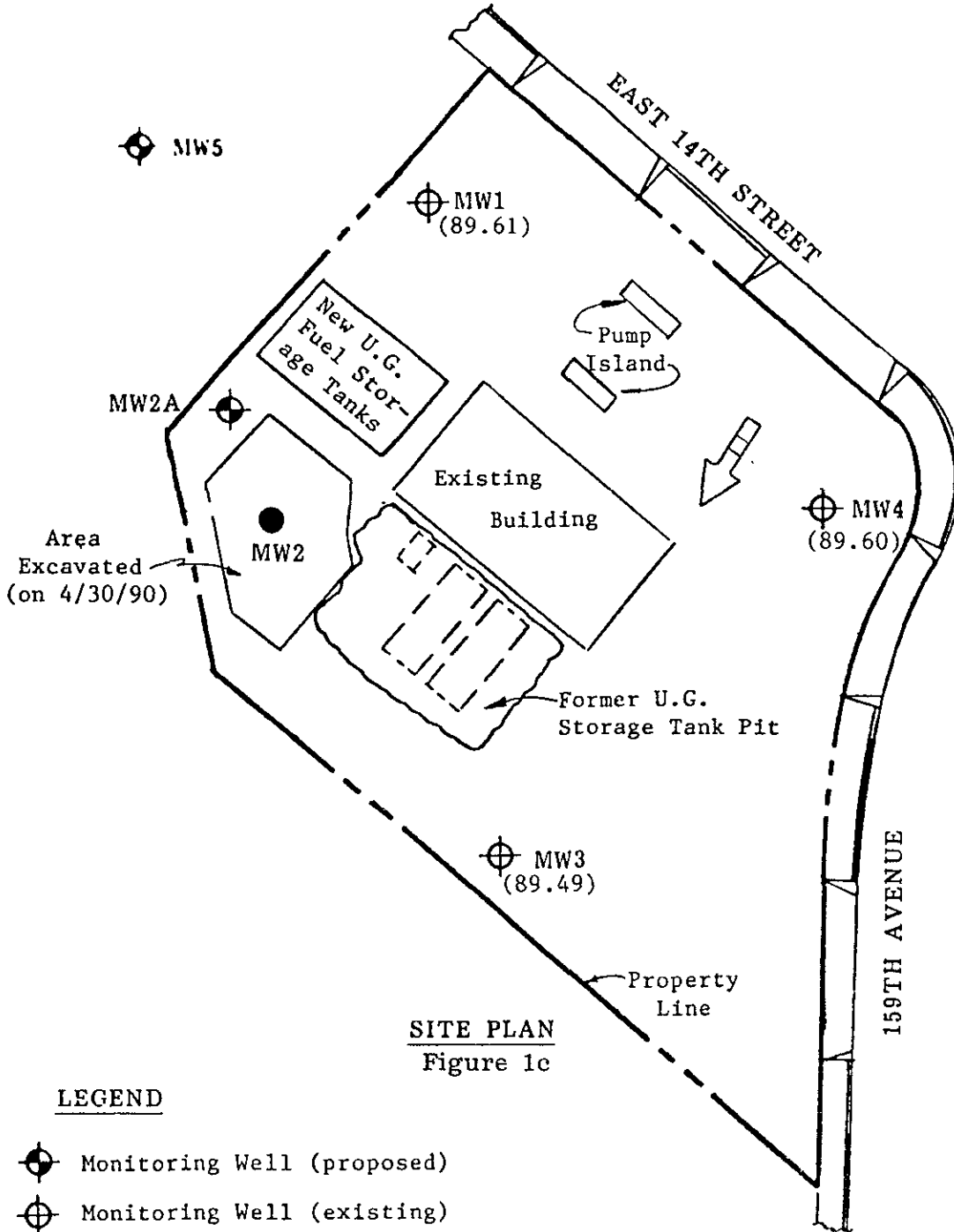


KAPREALIAN ENGINEERING, INC.

Consulting Engineers





PO. BOX 996 • BENICIA, CA 94510

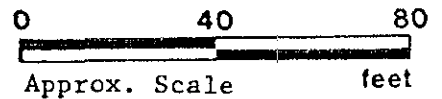
(707) 746-6915 • (707) 746-6916 • FAX: (707) 746-5581



SITE PLAN
Figure 1c

LEGEND

-  Monitoring Well (proposed)
-  Monitoring Well (existing)
- () Water table elevation in feet on 10/19/90 . Top of MW4 well cover assumed 100.00' as datum.
-  Ground water flow direction.
-  Monitoring Well (abandoned 2/1/90)



Unocal Service Station #6277
15803 East 14th Street
San Leandro, California

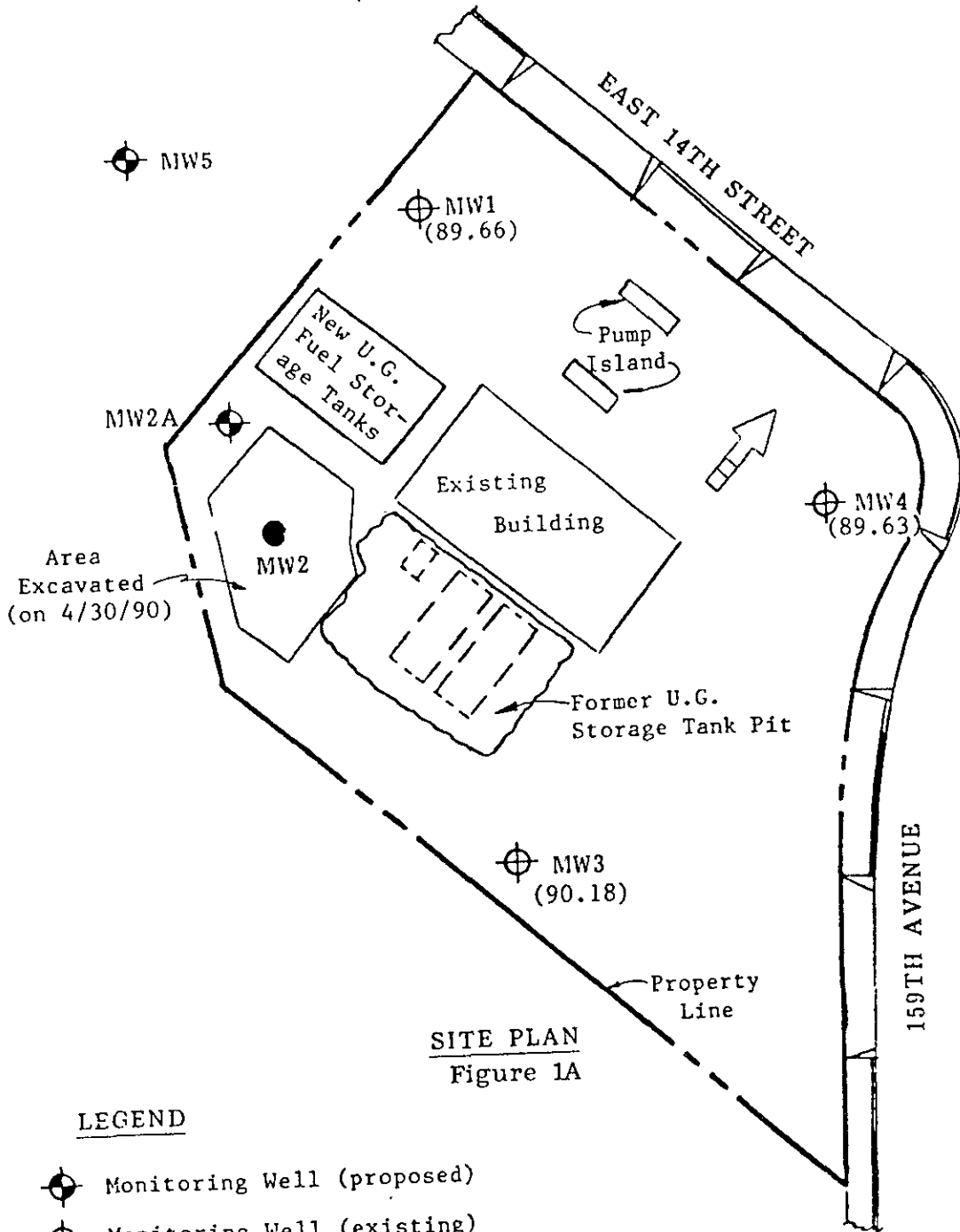
Depth (feet)	Samples	Blows	MATERIAL DESCRIPTION	USCS	Moisture Content	Dry Density pcf
			same as above	CL SC	▼	
40	25		CLAYEY SAND greenish gray, fine to medium grained, poorly graded, saturated	SC		
	26*					
45	27		SANDY CLAY dark gray, fine grained, medium plasticity, wet	CL		
	28		SILTY CLAY dark gray, medium plasticity, very stiff, wet	CL		
	29					
	30*		becoming light gray, moist			
50			Total Depth = 49 feet * = Sample sent to Laboratory			
55						
60						
65						
70						
75						
80						



KAPREALIAN ENGINEERING, INC.

Consulting Engineers

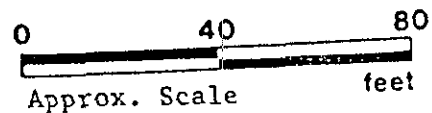
PO BOX 996 • BENICIA, CA 94510
(707) 746-6915 • (707) 746-6916 • FAX: (707) 746-5581



SITE PLAN
Figure 1A

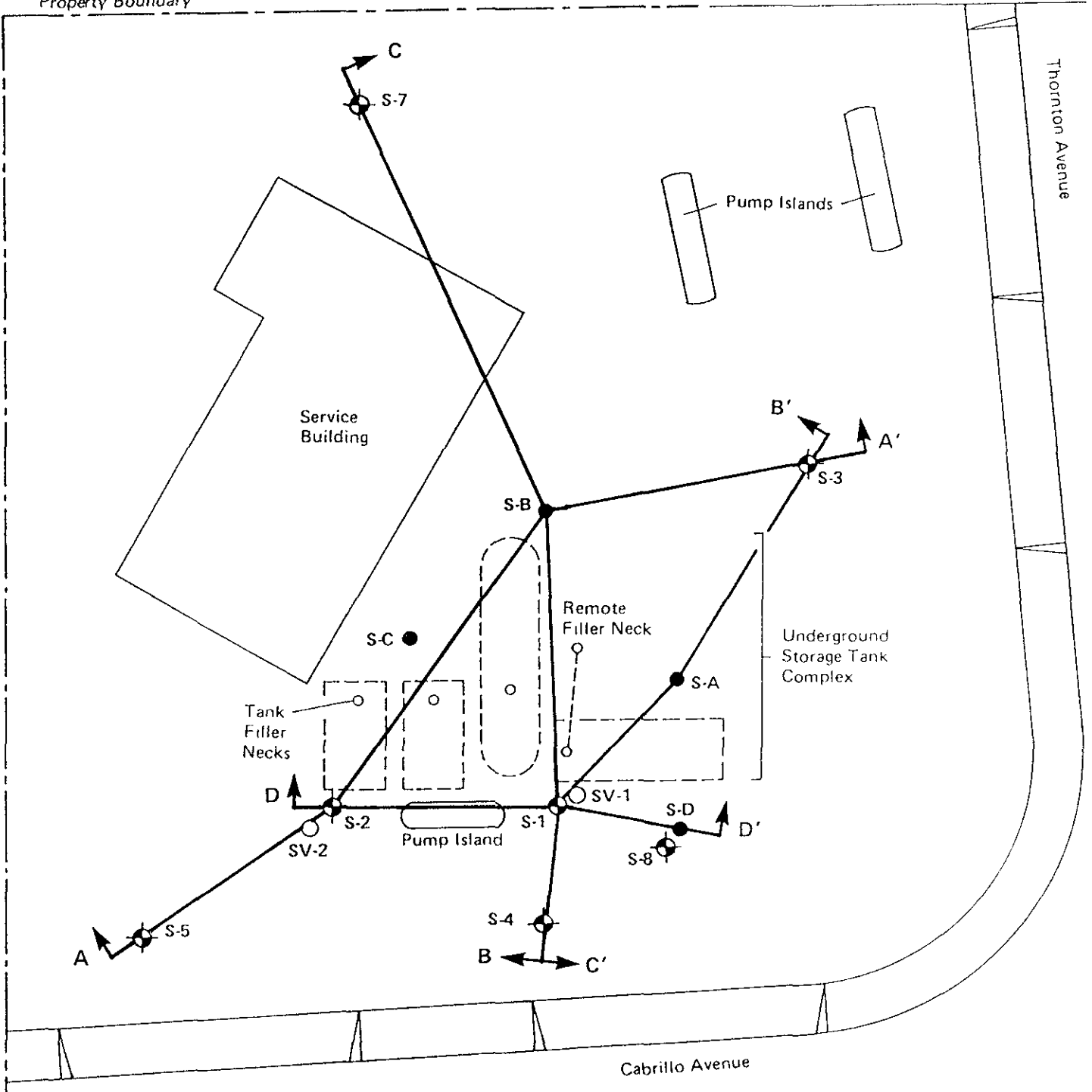
LEGEND

- Monitoring Well (proposed)
- Monitoring Well (existing)
- () Water table elevation in feet on 9/19/90 . Top of MW4 well cover assumed 100.00' as datum.
- Ground water flow direction.
- Monitoring Well (abandoned 2/1/90)



Unocal Service Station #6277
15803 East 14th Street
San Leandro, California

Property Boundary



LEGEND

- SV-1 ○ Vadose Zone Wells Installed May 1985
- S-3 ● Monitoring Wells
- S-A ● Soil Borings
- ↔ Cross Section Line

Project No. 8910011A	Shell BASS	SITE PLAN WITH CROSS SECTION LOCATIONS SHELL SERVICE STATION	Figure 6
Woodward-Clyde Consultants		4695 THORNTON AVENUE, FREMONT, CA	

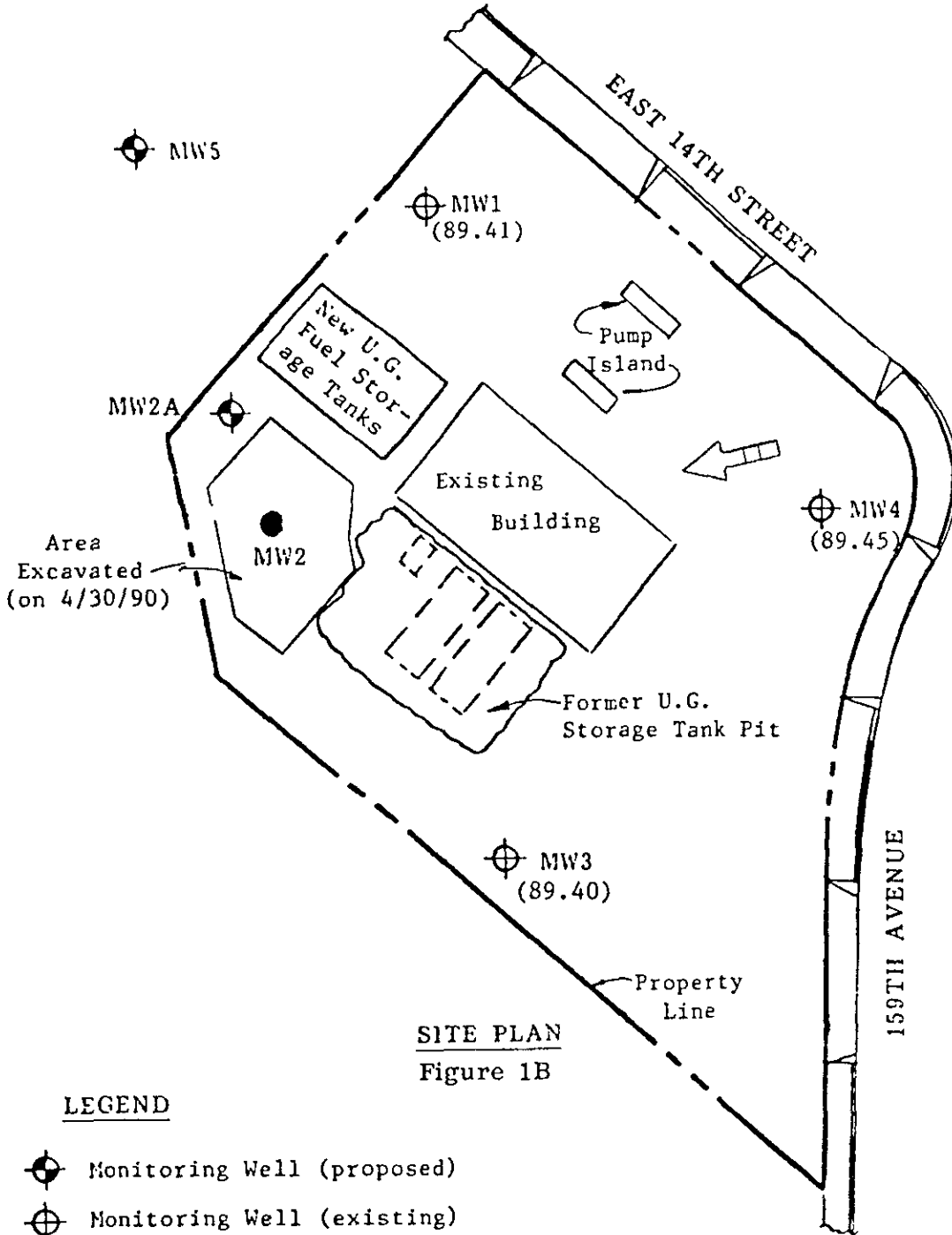


KAPREALIAN ENGINEERING, INC.

Consulting Engineers

PO BOX 996 • BENICIA, CA 94510

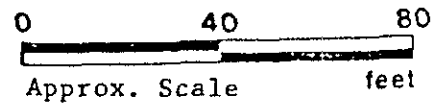
(707) 746-6915 • (707) 746-6916 • FAX (707) 746-5581



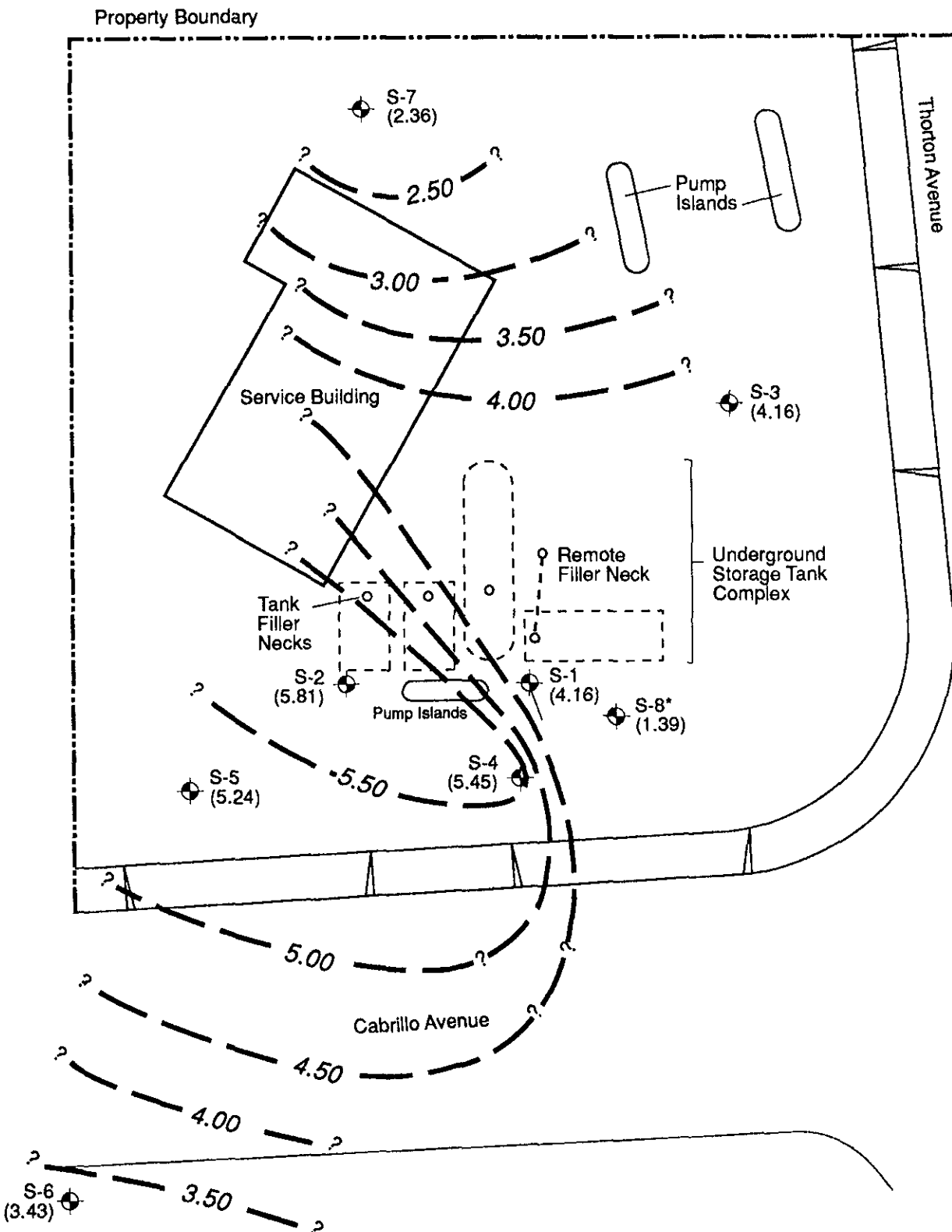
SITE PLAN
Figure 1B

LEGEND

- Monitoring Well (proposed)
- Monitoring Well (existing)
- () Water table elevation in feet on 8/24/90 . Top of MW4 well cover assumed 100.00' as datum.
- Ground water flow direction.
- Monitoring Well (abandoned 2/1/90)



Unocal Service Station #6277
15803 East 14th Street
San Leandro, California

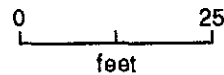


LEGEND


 S-1 (4.16) Monitoring Well, with Elevation of Top of Groundwater (feet, MSL)


 3.50 Groundwater Elevation Contour (feet, MSL)

* Well S-8, screened from 52 to 57 feet depth, is not honored by the contours.



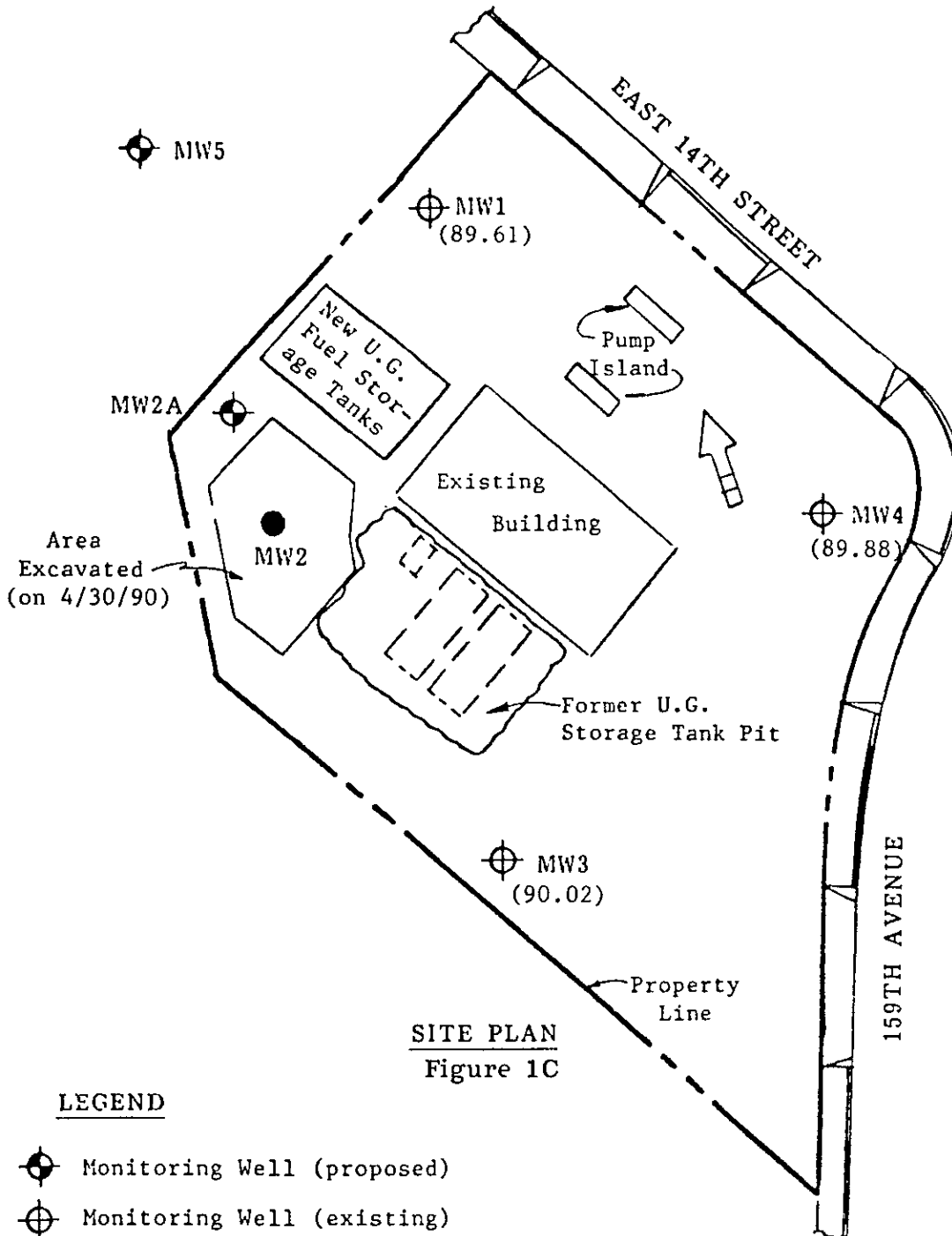
Project No. 8910011A	Shell BASS	CONTOURED GROUNDWATER ELEVATIONS OCTOBER 23, 1990, SHELL SERVICE STATION 4695 THORTON AVENUE, FREMONT, CA	Figure 5
Woodward-Clyde Consultants			



KAPREALIAN ENGINEERING, INC.

Consulting Engineers

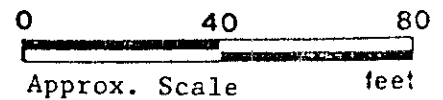
PO BOX 996 • BENICIA, CA 94510
(707) 746-6915 • (707) 746-6916 • FAX (707) 746-5581



SITE PLAN
Figure 1C

LEGEND

- Monitoring Well (proposed)
- Monitoring Well (existing)
- Monitoring Well (abandoned 2/1/90)
- Ground water flow direction.
- Area Excavated (on 4/30/90)



Unocal Service Station #6277
15803 East 14th Street
San Leandro, California

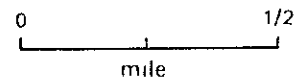


LEGEND

E3 ○ Water-Producing Well

K5 ● Abandoned Well

Wells Are Listed on Table 1



Project No. 8910011A	Shell Bass	WELL SURVEY MAP WITH WELL LOCATIONS SHELL SERVICE STATION	Figure 4
Woodward-Clyde Consultants		4695 THORNTON AVE., FREMONT, CA	

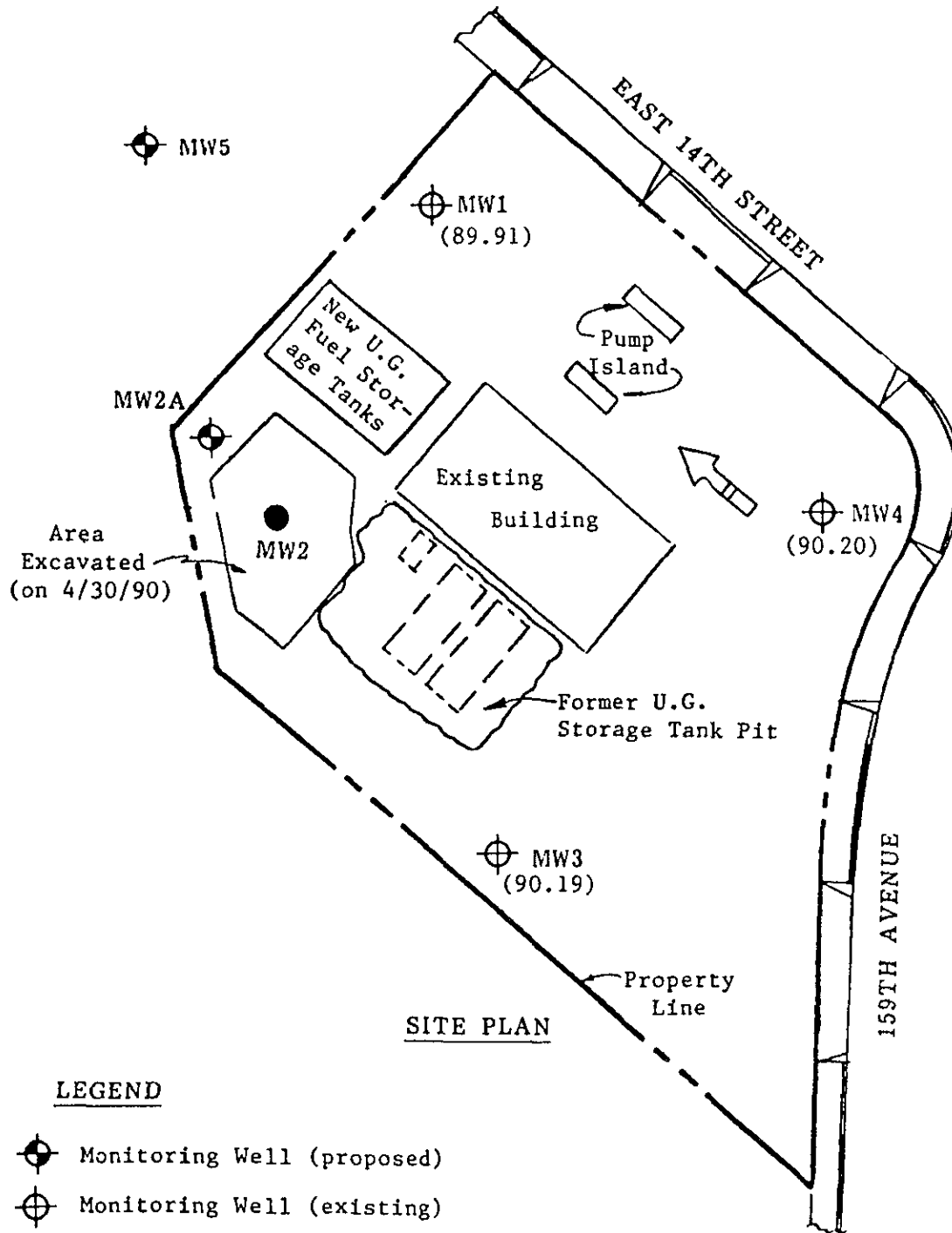


KAPREALIAN ENGINEERING, INC.

Consulting Engineers

PO BOX 996 • BENICIA, CA 94510

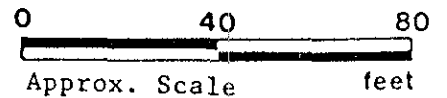
(707) 746-6915 • (707) 746-6916 • FAX. (707) 746-5581



SITE PLAN

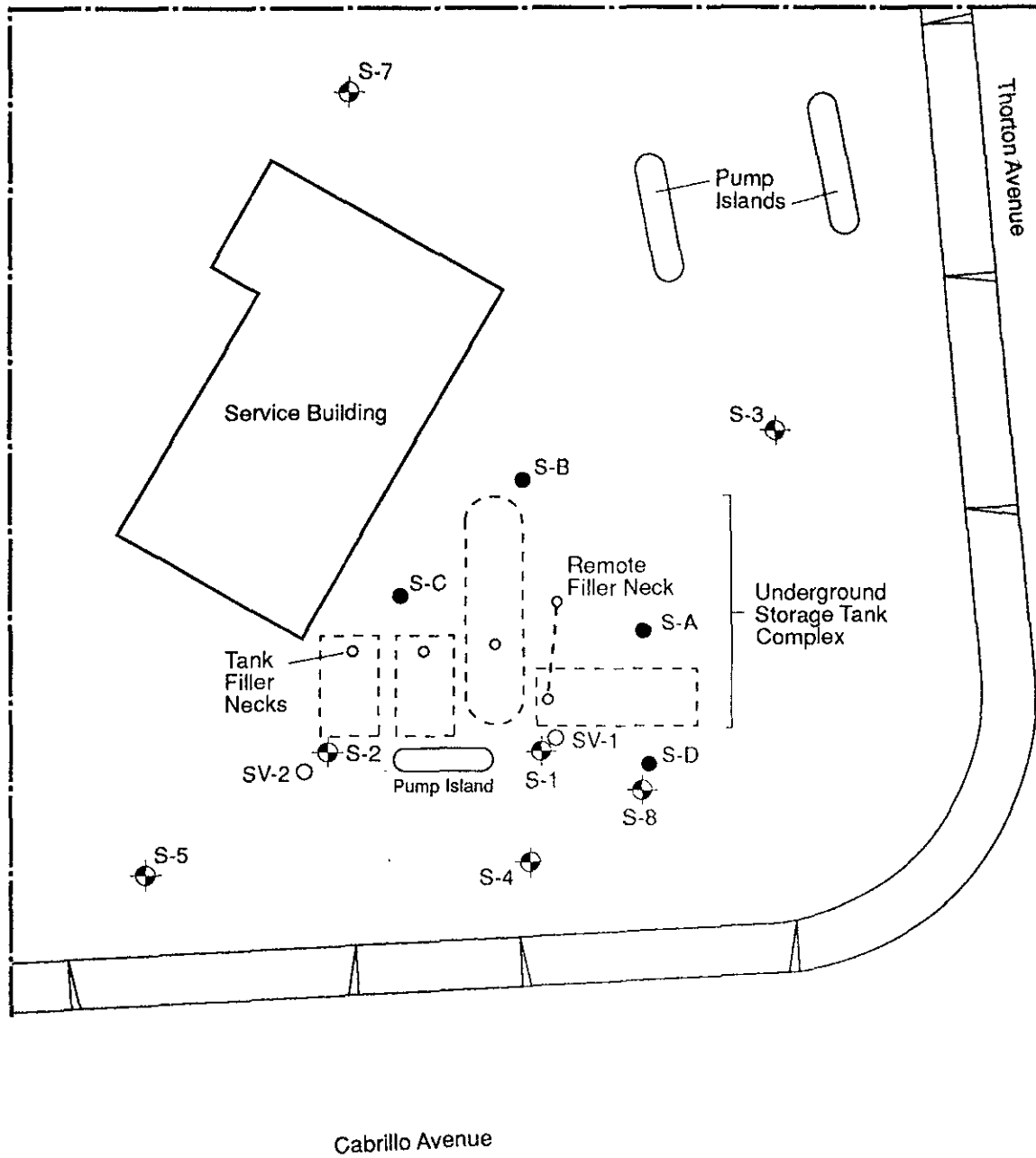
LEGEND

- Monitoring Well (proposed)
- Monitoring Well (existing)
- () Water table elevation in feet on 3/29/90 . Top of MW4 well cover assumed 100.00' as datum.
- Ground water flow direction.
- Monitoring Well (abandoned 2/1/90)



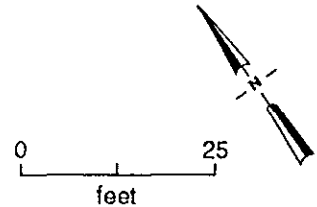
Unocal Service Station #6277
15803 East 14th Street
San Leandro, California

Property Boundary



LEGEND

- SV-1 ○ Vadoso Zone Wells
- S-3 ⊕ Monitoring Wells
- S-A ● Soil Borings



Project No. 8910011A	Shell BASS	SITE PLAN SHELL SERVICE STATION 4695 THORTON AVENUE, FREMONT, CA	Figure 3
Woodward-Clyde Consultants			