



GETTLER-RYAN INC.

FACSIMILE COVER SHEET

TO: MARK MILLER

COMPANY: CHEVRON

FAX#: 842-8252

FROM: ARGY LEYTON

DATE: 24 JULY '95

REFERENCE: 9-2314, STORM DRAIN DATA

COMMENTS: STORM DRAIN LOCATIONS.

BURIAL DEPTH S/B NOT GREATER

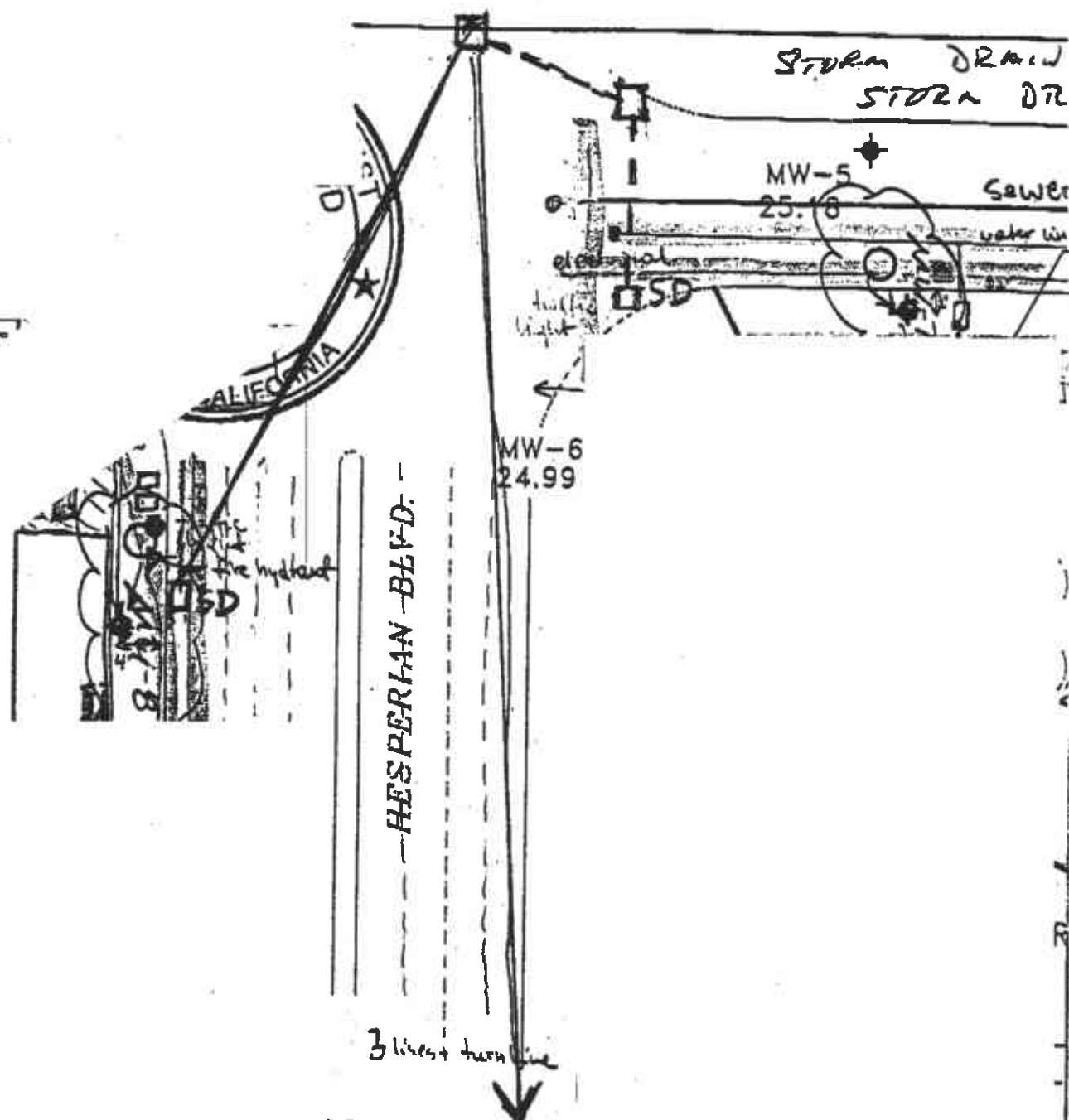
THAN 5' PER JOHN ROGERS - AL. Co. PUB. WORKS
W DEPTH = 3-4' BGS.

2 PAGES INCLUDING COVER

HARD COPY TO FOLLOW BY MAIL: YES NO

IF THERE ARE ANY PROBLEMS WITH THIS TRANSMISSION,
PLEASE CALL (510) 551-7555 EXT 275

GETTLER-RYAN FAX# (510) 551-7888



PROPERTY LINE

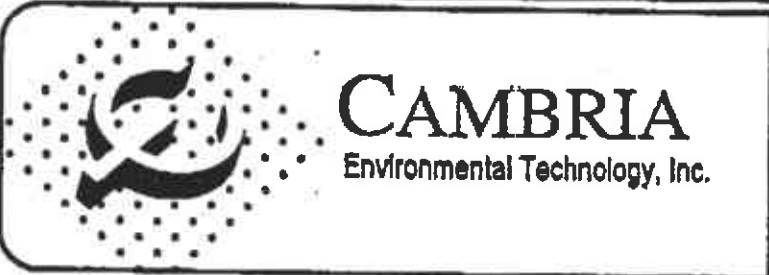
MONITORING WELL

ABANDONED MONITOR (FORMER LOCATION C)

POTENTIOMETRIC SURFACE ELEVATION (FT)

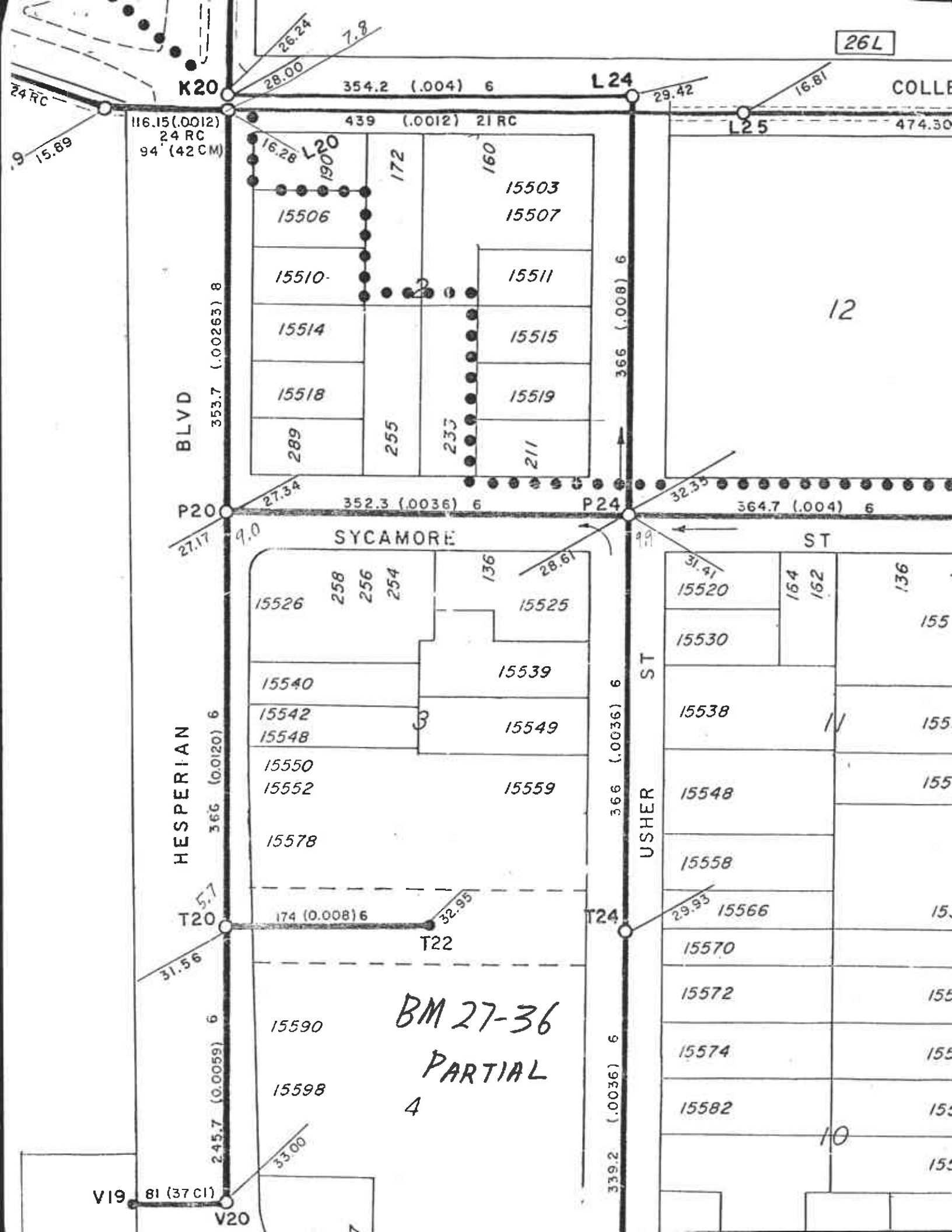
POTENTIOMETRIC SURFACE CONTOUR

GROUNDWATER FLOW DIRECTION



Former Chevron Station 9-
15526 Hesperian Blvd
San Lorenzo, California

VCHEVRON9-23842385-QM.DW



K20

L24

L25

P20

P24

T20

T22

T24

HESPERIAN

BLVD

SYCAMORE

USHER ST

ST

COLLEGE

BM 27-36
PARTIAL
4

116.15 (.0012)
24 RC
94 (42 CM)

354.2 (.004) 6

439 (.0012) 21 RC

29.42

474.30

15.89

26.24

7.8

28.00

16.81

16.28

190

172

160

15503

15507

15506

15510

15511

15514

15515

15518

15519

289

255

233

211

353.7 (.00263) 8

366 (.008) 6

27.34

352.3 (.0036) 6

32.35

364.7 (.004) 6

27.17

9.0

28.61

15526

258

256

254

136

15525

15540

15539

15542

15549

15548

15550

15559

15552

15578

174 (0.008) 6

T22

29.93

15566

31.56

15590

15598

245.7 (.0059) 6

339.2 (.0036) 6

33.00

V19 81 (37 C1)

V20

10

12

155

155

155

155

155

155

155

155