



Contractor's License #643881

Accutite Environmental Engineering

35 So. Linden Avenue, South San Francisco, CA 94080-6407 Tel: (415) 952-5551 Fax: (415) 952-7631 Tank Testing: (415) 952-0327

March 10, 1994

Z Rental Properties
548 1/2 Cleveland Avenue
Albany, Ca 94710
Attn: Mr. Frank Zichichi

RE: REMEDIAL SOIL INVESTIGATION REPORT FOR
711 CLEVELAND STREET, ALBANY, CA 94710

Dear Mr. Zichichi:

Accutite Environmental Engineering is pleased to submit this Remedial Soil Investigation report for the site located at 711 Cleveland Avenue, Albany, California. The work and soil sampling was performed by Accutite and was witnessed by Alameda County inspector Juliet Shin.

If you have any questions, please contact me at (415) 952-5551.

Regards,
Accutite Environmental Engineering

Amy P. Breckenridge
Project Engineer

ALCO
HAZMAT
94 MAR -6 PM 1:15

**Remedial Soil Investigation Report
for
711 Cleveland Avenue, Albany, Ca**

Date: February 15, 1994

Prepared for: Z-Rentals
548 1/2 Cleveland Avenue
Albany, Ca
Attn: Frank & Bob Zichichi

Prepared by: Accutite Environmental Engineering
35 South Linden Avenue
South San Francisco, Ca 94080
Amy P. Breckenridge, Project Engineer

711 Cleveland Avenue, Albany, Ca



TABLE OF CONTENTS

- I. Site Background
- II. Tank Removal Summary (5/19,21/93)
- III. Remedial Soil Investigation (8/17/93)
- IV. Remedial Soil Investigation (2/15/94)
 - A. Summary
 - B. Stockpiled soil
- V. Soil Sampling Identification
- VI. Excavation Soil Sampling Methodology
- VII. Conclusions
- VIII. Recommendations
- IX. Limitations

TABLES - SOIL SAMPLING RESULTS

- 1. Tank Removal (5/19,21/93)
- 2. Over Excavation (8/17/93)
- 3. Over Excavation (2/15/94)

ATTACHMENTS

- A. Site Location
- B. Site Maps -
 - Figure 1, 2 - Tank Removal
 - Figure 3 - Over Excavation 8/17/93
 - Figure 4,5 - Over Excavation 2/15/94
- C. Photographs
 - # 1-6
- D. Original Laboratory Analytical Results
- E. Alameda Inspection Report

**REPORT ON REMEDIAL SOIL INVESTIGATION REPORT CONDUCTED ON FEB. 15, 1994
711 CLEVELAND STREET, ALBANY, CA 94710**

I. Site Background:

The subject property lies East of highway 80 and half a mile South of Central Avenue in Albany, California. The site lies approximately 50 feet above mean sea level. The site is underlain by sandstone encountered at different depths ranging from one to fifteen feet.

II. Tank Removal Summary:

On May 19 & 21, 1993, Accutite Environmental Engineering removed one 2,000 gallon gasoline and one 500 gallon diesel underground storage tank respectively, from the subject site. Upon removal of the tanks, five soil samples were collected, three samples from the excavations, 2 feet beneath tank bottom (labeled on the site maps as N10', S10', and D9'), and two composite samples from the excavated stockpile soil (labeled SP & SP2). Soil in the excavation consisted of sandy backfill material, and underlying clays. Hard sandstone was encountered at approximately 11 feet below surface grade beneath each tank. The two excavated stockpiles, approximately 30 cubic yards, contained hydrocarbon staining and odor. Soil samples SP, N10', and S10' were analyzed for Total Petroleum Hydrocarbons as Gasoline (TPH-G) with Benzene, Toluene, Ethyl Benzene, and Total Xylenes (BTEX) distinctions. Soil samples SP2 and D9' were analyzed for Total Petroleum Hydrocarbons as Diesel (TPH-D) and BTEX. (see Table 1 for summary of results) The excavations were backfilled with excavated soil and imported clean drain rock separated by visqueen on the same day of each removal.

The 2,000 gallon gasoline tank contained several 3/8" size holes on the top flat end of the tank. The 500 gallon diesel tank was found in good condition with no holes. Ground water was not encountered in the excavations.

III. Remedial Soil Investigation. August 17, 1993:

The limited remedial site investigation of the former underground storage tanks (UST) located at 711 Cleveland Avenue was performed on August 17, 1993. Approximately 120 cubic yards of diesel and gasoline contaminated soil was removed and stockpiled on site. Four sidewall samples were collected from the excavation from depths between 5-7 feet. Two composite soil samples were collected from the stockpiled soil. The north and west sidewalls reported **Non-Detect** levels of TPH-D, TPH-G and BTEX. The south sidewall reported **26 ppm** as TPH-G, **150 ppm** as TPH-D and **Non-Detect** for BTEX. The east sidewall next to the building reported **42 ppm** as TPH-G, **3,100 ppm** as TPH-D, **Non-Detect** for Benzene and Toluene, **0.089 ppm** as Ethyl Benzene and **0.068 ppm** as Total Xylenes. The stockpiled soil reported **57 ppm** and **140 ppm** as TPH-G, **1,700** and **770 ppm** as TPH-D, **Non-Detect** for Benzene, Toluene and Ethyl Benzene, and **0.059** and **0.15 ppm** as Total Xylenes, **Non-Detect** for EPA method 8010.

IV. Remedial Soil Investigation. February 15, 1994:

A. Summary

On February 15, 1994, Accutite further over excavated the east, south and part of the north sidewalls. Soil was removed first from the east wall where sample E7' was collected and reported 3,100 ppm as TPH-D on August 17, 1993. As soil was removed, a PID was used to screen for Volatile Organic Concentrations (VOCs). Concentrations, initially 50 ppm, decreased to 0 ppm after excavating 20 linear feet toward the east. Sample E5' was collected at a depth of 5 feet from the east wall.

The bottom of the excavation consisted of hard fractured sandstone. It was noted that the depth to sandstone decreased from ten to seven and a half feet from the west to the east side of the excavation. Groundwater was not encountered in the excavation.

As the soil was removed from the south sidewall a dark grey sand was exposed. The sand

extended from surface level down to the sandstone (approximately 11 feet) and contained high levels of VOCs. The south sidewall was extended forty feet long and seventeen feet wide until the sandy lense was removed and clay was exposed. Sidewall samples were collected at a depth of seven feet from the west, south and east walls (labeled 2W7', S7' and 2E7'). Samples 2W7' and 2E7' consisted of brownish yellow silty clay. Sample S7' consisted of dark greyish brown clay with medium to coarse gravel. (Please refer to Figure 4 in attachment B "Site Maps")

Sample 2N6' was collected from the north sidewall within three feet of the building on February 17, 1994. The sample was collected utilizing a hand auger. Six inches of soil was removed by the auger from the sidewall surface prior to collecting the sample.

B. Stockpiled soil

Approximately 680 cubic yards of soil were excavated, stockpiled on-site and covered with visqueen on February 15, 1994. Five composite soil samples (labeled 1SP2/15/94, 2SP2/15/94, 3SP2/15/94, 4SP2/17/94 and 5SP2/17/94) were collected from the stockpiled soil. Sample 1SP2/15/94 was collected from the 120 cubic yards excavated previously on August 17, 1993. The remaining four samples were collected from the 680 cubic yards excavated on February 15, 1994. All the samples were analyzed for TPH-D, TPH-G with BTEX distinctions.

← Only five?

IV. Soil Sampling Identification:

Sidewall soil samples were collected and labeled as E5', 2E7', 2W7', S7', 2N6', B11.5' where:
2 = second sample from same sidewall
N, S, E, W, B = North, South, East, West, Bottom
5', 6', 7' = depth below surface grade (bsg)

Stockpile soil samples were collected and labeled as 1SP2/15/94 where:
1 = number designator
SP = Stockpile
2/15/94 = date collected

V. Excavation Soil Sampling Methodology:

Soil samples obtained from an excavator bucket from the sidewalls of the excavation were collected in a thin-walled brass cylinder six inches long by two inches in diameter. About one inch of soil was removed from the immediate surface area where the sample was to be taken and the cylinder then pounded into the soil with a mallet. No headspace was present in the cylinder once the sample was collected. When the sample was collected, each end of the cylinder was covered with aluminum foil and then capped with a polyethylene lid, taped, and labeled. Care was taken throughout this process to avoid contamination of the inside, outside, and contents of the cylinder.

Each sample was then immediately placed in an ice chest containing blue ice and kept cold (approximately 4 °C) for delivery to Sequoia Analytical laboratory (DHS certified) in Redwood City. Soil samples were sent under chain of custody to the laboratory. Analytical results are reported in parts per million (ppm).

VI. Conclusions:

The analytical results for all the sidewall samples except sample S7' reported less than 10 ppm as TPH-G, BTEX, TPH-D, EPA method 5030/8020 and EPA method 8080. In addition, sample E5' reported Non-Detect for EPA method 8010 and Total lead. Sample S7' reported 42 ppm as TPH-D, 40 ppb as 4,4' DDD and Non-Detect as TPH-G, BTEX and EPA method 5030/8020.

The analytical results for the samples collected from the excavated stockpiled soil reported 85 to 2,100 ppm as TPH-D, 1.6 to 220 ppm as TPH-G and Non-Detect for Benzene. Utilizing these results, a mass calculation was performed which resulted in approximately 1,000 pounds of petroleum hydrocarbons removed from the subsurface.



VII. Recommendations:

The analytical results for the samples collected from the sidewalls of the excavation reported low concentrations of contaminants. The south wall which reported less than 100 ppm as TPH-D could not be further excavated due to the location of the nearby building. Based on these conditions, Accutite recommends backfilling the excavation with clean imported fill upon the approval of Alameda County. The excavated soil should be profiled for disposal at a regulated landfill or treatment at a recycling center. Profiling should include analyses for TPH-G, BTEX, TPH-D, EPA method 8080 and metals.

You are required to submit to the following agencies for their review, a copy of this report with a cover letter.

Alameda County Health Agency
Division of Hazardous Materials
Department of Environmental Health
80 Swan Way, Rm 350
Oakland, CA 94621
Attn: Juliet Shin

San Francisco Bay Regional Water Quality Control Board
2101 Webster Street, Rm. 500
Oakland, CA 94612
Attn: Fuel Leaks Division

VIII. Limitations:

Our services consist of professional opinions, conclusions, and recommendations made today in accordance with generally accepted engineering principles and practices. This warranty is in lieu of all other warranties, either expressed or implied.

Accutite Environmental Engineering



Amy Breckenridge
Project Engineer

Laboratory Results: **TABLE 1**
Tank Removal

**Analytical Results from Soil Samples
for Total Petroleum Hydrocarbons
EPA Method 5030/8015/8020
EPA Method 3550/8015
Z Rental Properties
711 Cleveland Avenue, Albany, CA
May 19 & 21, 1993**

Sample Location	TPH/D	TPH/G	Benzene	Toluene	Ethyl-Benzene	Total Xylenes
<u>May 19, 1993</u>						
N10'	N.A.	52	N.D.	N.D.	N.D.	N.D.
S10'	N.A.	92	0.028	N.D.	N.D.	N.D.
Composite sample SP	N.A.	14	N.D.	N.D.	N.D.	0.051
<u>May 21, 1993</u>						
D9'	6.8	N.A.	N.D.	N.D.	N.D.	N.D.
Composite sample SP2	1,400	N.A.	0.025	0.057	N.D.	0.29
Detection Limits	1.0	1.0	0.005	0.005	0.005	0.005

All analytical results are reported in parts per million (ppm).

Please refer to the attached original laboratory results.

N.A. = Not Available

N.D. = Non-Detect

Laboratory Results:

TABLE 2
Remedial Soil Investigation

**Analytical Results from Soil Samples
for Total Petroleum Hydrocarbons
EPA Method 5030/8015/8020
EPA Method 3550/8015
Z Rental Properties
711 Cleveland Avenue, Albany, CA
August 17, 1993**

Sample Location	TPH/D	TPH/G	Benzene	Toluene	Ethyl-Benzene	Total Xylenes
<u>August 17, 1993</u>						
N-5'	N.D.	N.D.	N.D.	N.D.	N.D.	N.D.
S-6'	150	26	N.D.	N.D.	N.D.	N.D.
E-7'	3,100	42	N.D.	N.D.	0.089	0.068
W-5.5'	N.D.	N.D.	N.D.	N.D.	N.D.	N.D.
Composite sample SP1(1-4)	1,700	57	N.D.	N.D.	N.D.	0.059
<u>August 26, 1993</u>						
Composite sample (1-4)	770	140	N.D.	N.D.	N.D.	0.15
Detection Limits	1.0	1.0	0.005	0.005	0.005	0.005

All analytical results are reported in parts per million (ppm).

Please refer to the attached original laboratory results.

N.A. = Not Available

N.D. = Non-Detect

TABLE 3

Laboratory Results:

OVER EXCAVATION

Analytical Results from Soil Samples
for Total Petroleum Hydrocarbons
EPA Method 5030/8015/8020
EPA Method 3550/8015
Z Rental Properties
711 Cleveland Avenue, Albany, CA
February 15,17, 1994

Sample Location	TPH/D	TPH/G	Benzene	Toluene	Ethyl-Benzene	Total Xylenes
2N6'	N.D.	N.D.	N.D.	N.D.	N.D.	N.D.
E5'	N.D.	N.D.	N.D.	N.D.	N.D.	N.D.
B11.5'	8.4	N.D.	N.D.	N.D.	N.D.	N.D.
2E7'	5.4	N.D.	N.D.	N.D.	N.D.	N.D.
2W7'	N.D.	N.D.	N.D.	N.D.	N.D.	N.D.
S7'	42	N.D.	N.D.	N.D.	N.D.	N.D.
1SP 2/15/94	280	1.6	N.D.	N.D.	N.D.	N.D.
2SP 2/15/94	2,000	220	N.D.	N.D.	N.D.	1.1
3SP 2/15/94	620	15	N.D.	0.074	0.068	0.32
4SP	2,100	73	N.D.	N.D.	0.072	0.24
5SP	85	15	N.D.	N.D.	N.D.	0.013
Detection Limits	1.0-100	1.0	0.005	0.005	0.005	0.005

All analytical results are reported in parts per million (ppm).

Please refer to the attached original laboratory results.

N.A. = Not Available
N.D. = Non-Detect



TABLE 3

Laboratory Results:

OVER EXCAVATION

Analytical Results from Soil Samples
for Total Petroleum Hydrocarbons
EPA Method 8010
EPA Method 5030/8020
EPA Method 8080

Z Rental Properties
711 Cleveland Avenue, Albany, CA
February 15, 1994

Sample Location	8010 (ppb)	5030/8020 (ppb)	8080 (ppb)	Total Pb (ppm)
2N6'	N.A.	N.D.	N.D.	N.A.
E5'	N.D.	N.D.	N.D.	N.D.
B11.5'	N.A.	N.D.	N.D.	N.A.
2E7'	N.A.	N.D.	N.D.	N.A.
2W7'	N.A.	N.D.	N.D.	N.A.
S7'	N.A.	N.D.	41 - 4,4'-DDD	N.A.
Detection Limits	5-50	5.0	1-400	5

All analytical results are reported in parts per million (ppm).

Please refer to the attached original laboratory results.

N.A. = Not Available

N.D. = Non-Detect



Site Location

711 Cleveland Avenue, Albany, Ca

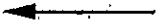


Site Maps

y

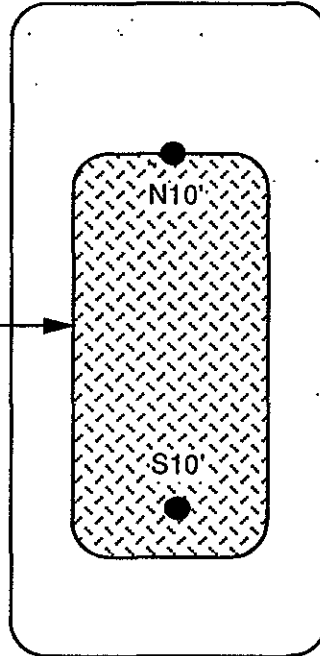


Cleveland St.



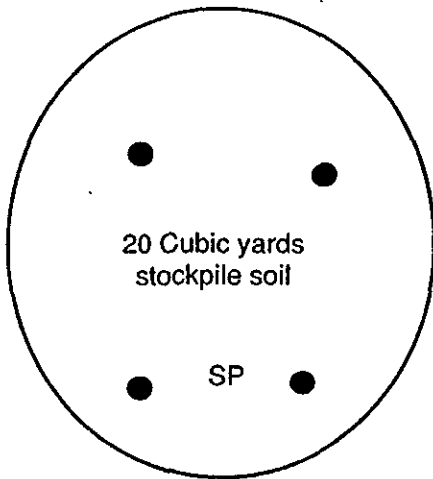
Dispenser

2,000 Gallon Former
Single Wall Steel
Gasoline Underground
Storage Tank



Garage Entrance

20 Cubic yards
stockpile soil



Revisions	Date	Page
	Tank Removal	1
1	19 May 93	of 2

Site: Z Rental
711 Cleveland Street
Albany, CA

By: ACCUTITE
ENVIRONMENTAL
ENGINEERING

NORTH

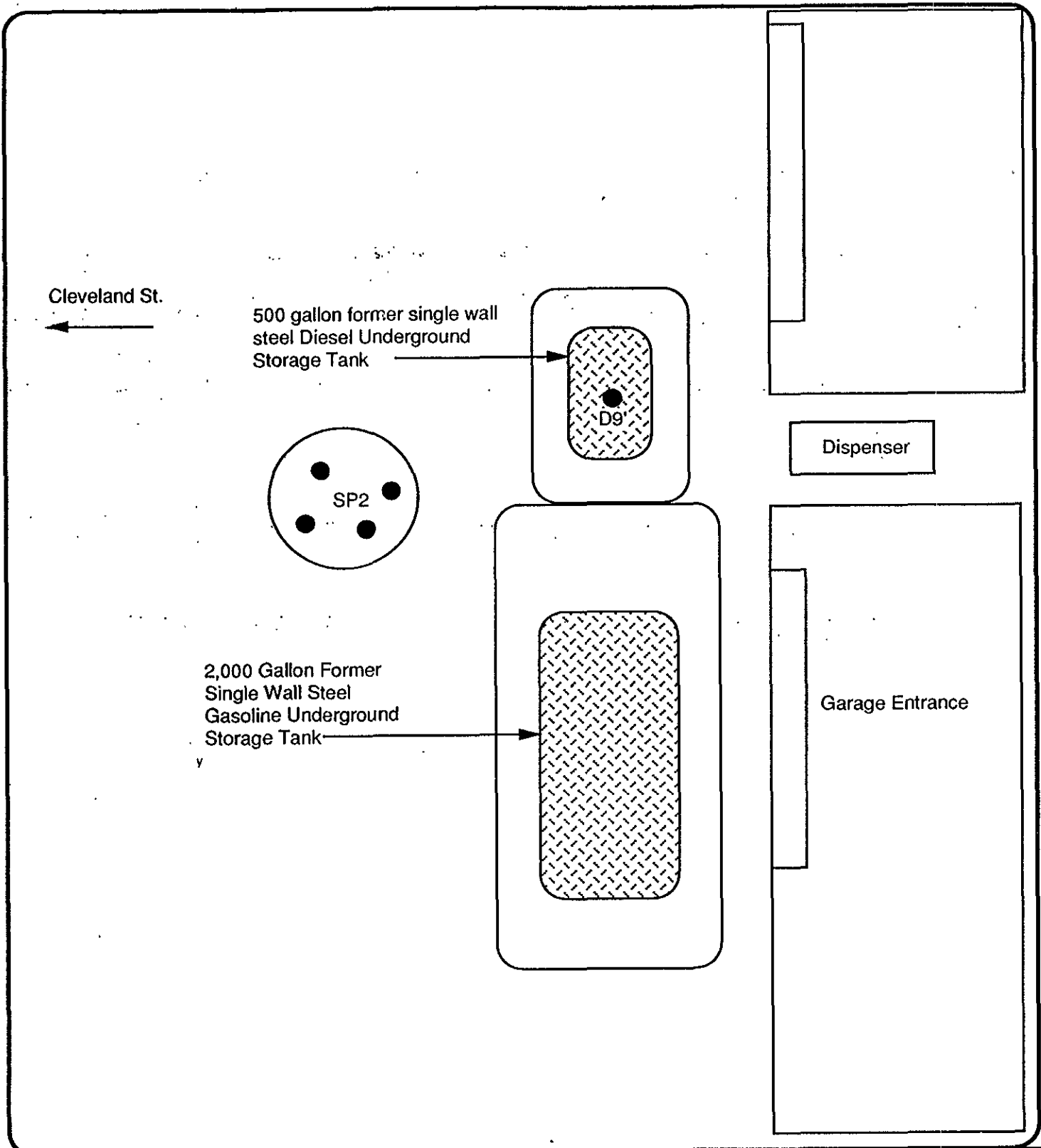



SCALE 1" = 5'

Key: ● Soil sample location

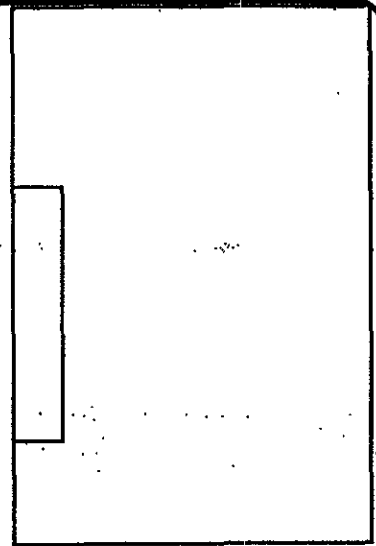
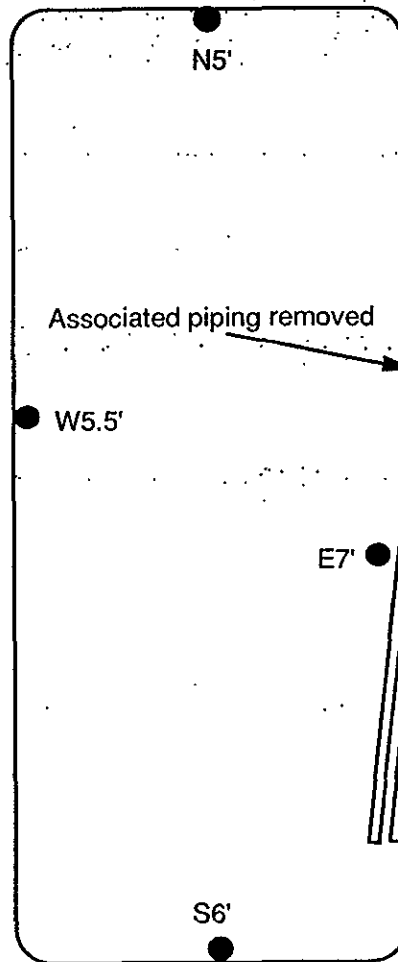
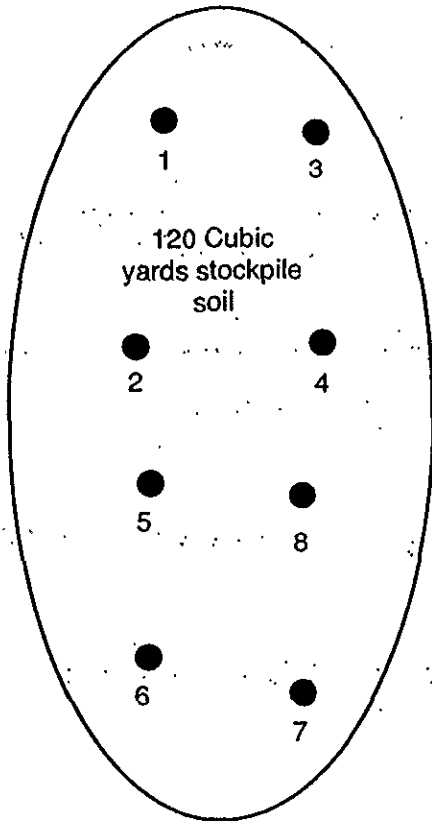
35 South Linden Avenue
South San Francisco
California 94080

Fig. 1

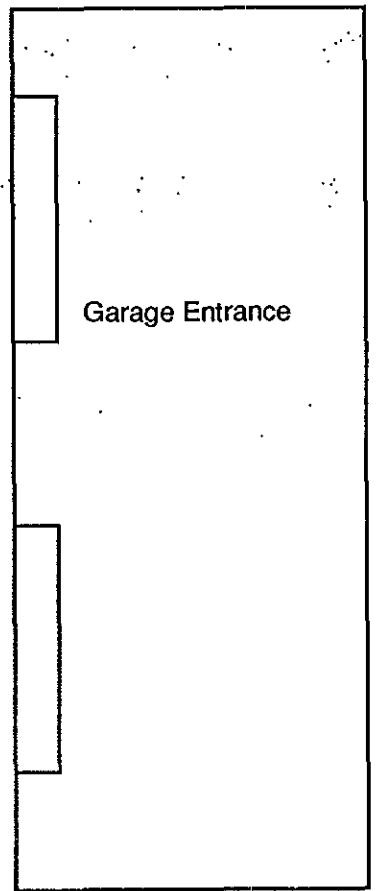



Revisions	Date	Page	Site: Z Rental 711 Cleveland Street Albany, CA	By: ACCUTITE ENVIRONMENTAL ENGINEERING
	Tank Removal	2		
	21 May 93	of 2		
NORTH 	SCALE	1" = 5'	Key: ● Soil sample location	35 South Linden Avenue South San Francisco California 94080
	Fig. 2			

Cleveland St.



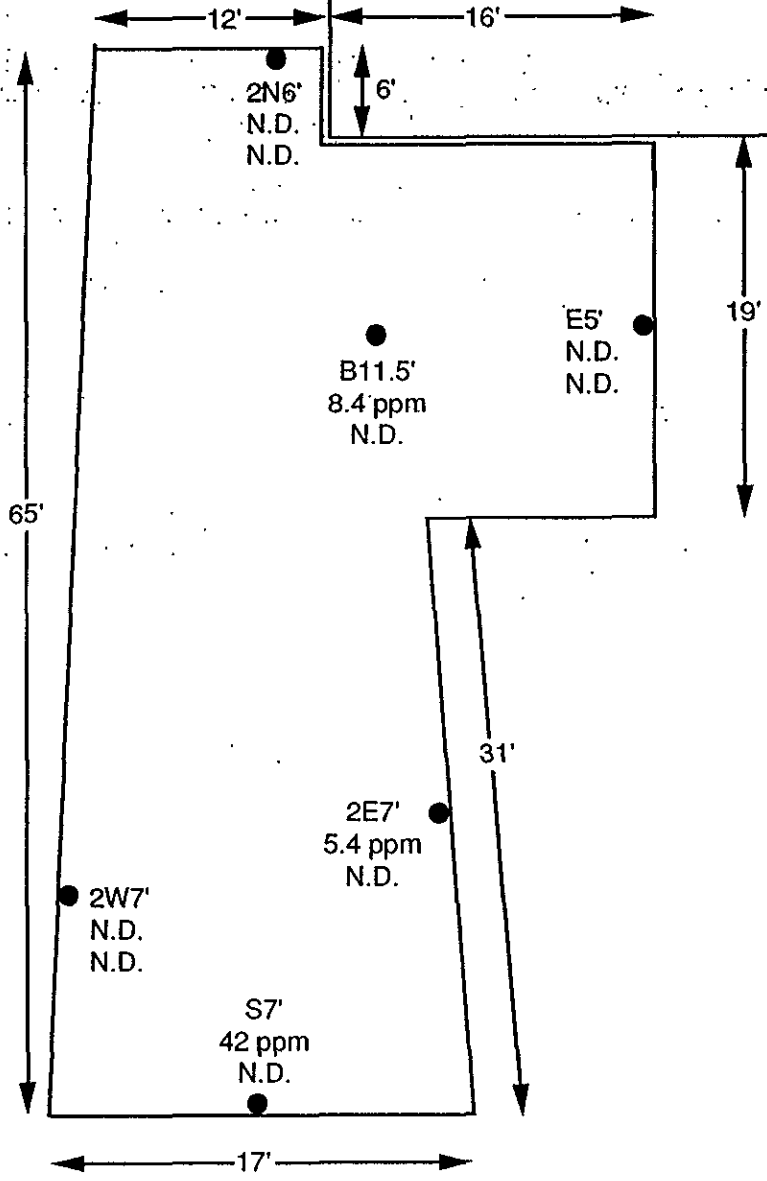
Dispenser




Revisions	Date	Page	Site: Z Rental 711 Cleveland Street Albany, CA	By: ACCUTITE ENVIRONMENTAL ENGINEERING
	Over Dig	1		
	17 Aug 93	of 1		
NORTH 	SCALE	1" = 5'	Key: ● Soil sample location	35 South Linden Avenue South San Francisco California 94080
	Fig. 3			

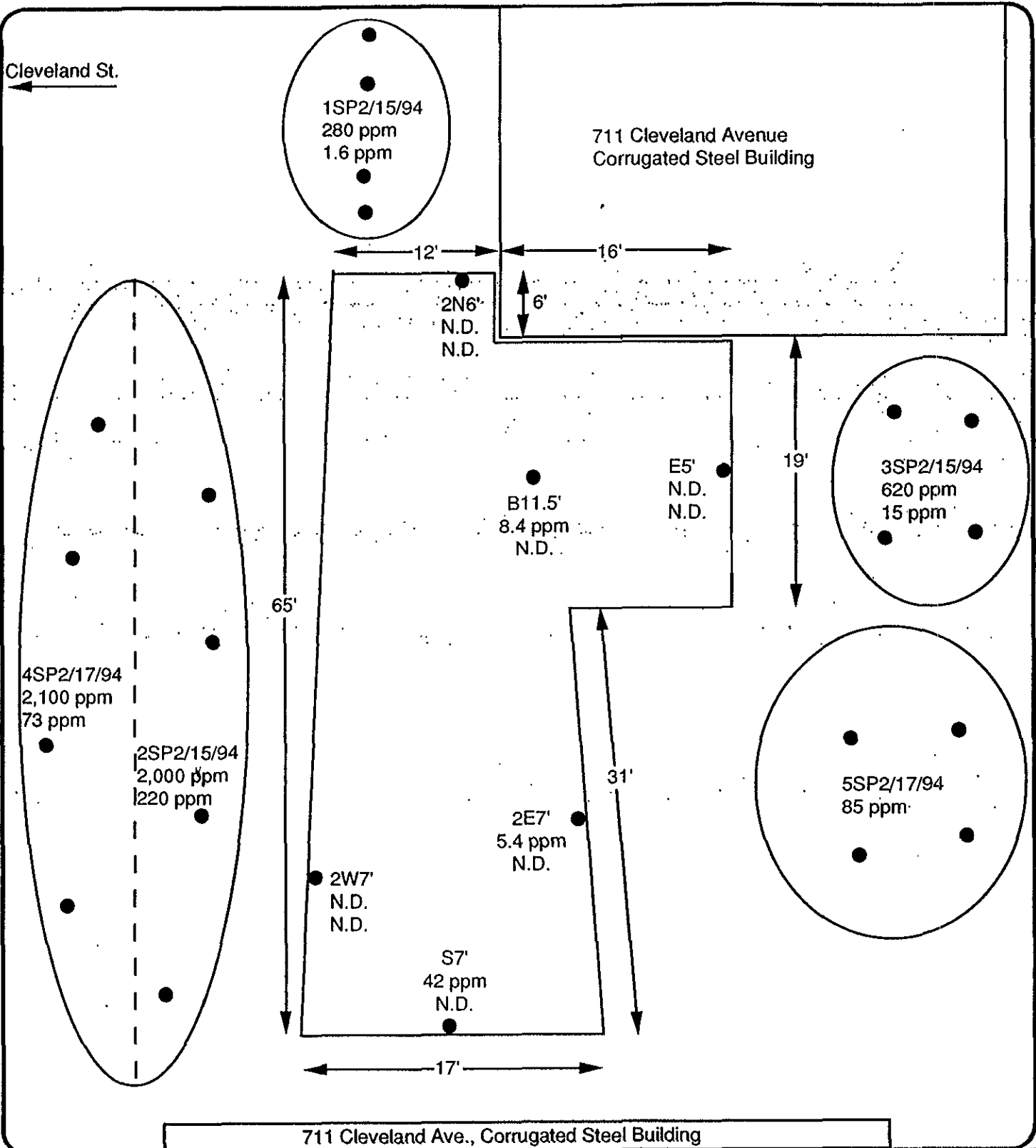
Cleveland St.

711 Cleveland Avenue
Corrugated Steel Building




711 Cleveland Ave., Corrugated Steel Building

Revisions	Date	Page	Site: Z Rental 711 Cleveland Street Albany, CA	By: ACCUTITE ENVIRONMENTAL ENGINEERING
	Over Dig			
	15 Feb 94	of		
NORTH 	Not to SCALE		Key: ● Soil sample location S7' = lable 42 ppm = results for TPH-D N.D. = results for TPH-G	35 South Linden Avenue South San Francisco California 94080
	Fig. 4			



711 Cleveland Ave., Corrugated Steel Building

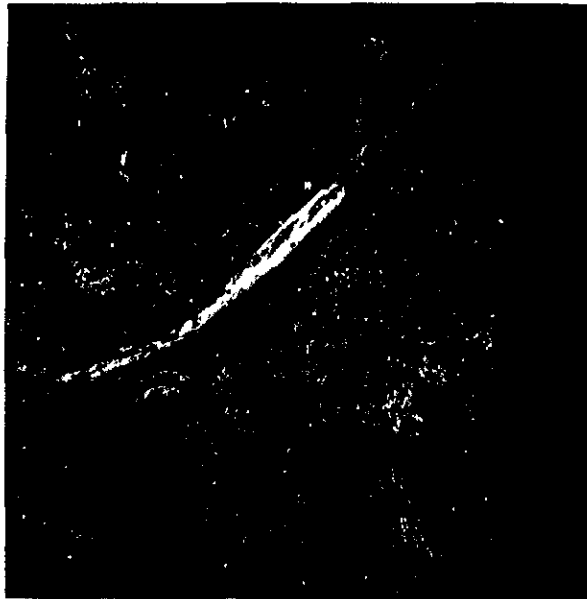
Revisions	Date	Page	Site: Z Rental 711 Cleveland Street Albany, CA	By: ACCUTITE ENVIRONMENTAL ENGINEERING
	Over Dig			
	15 Feb 94	of		
NORTH 	Not to SCALE		Key: ● Soil sample location S7' = label 42 ppm = results for TPH-D N.D. = results for TPH-G	35 South Linden Avenue South San Francisco California 94080
	Fig. 5			

Photographs

711 Cleveland Avenue, Albany, Ca

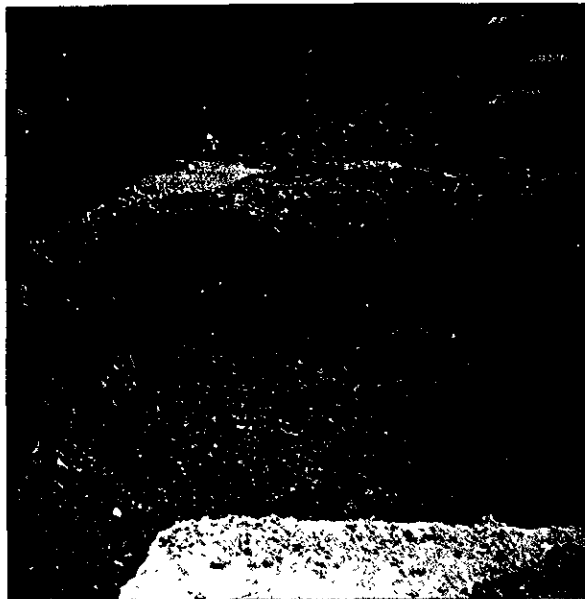
13





Hole in fuel line
Z-Rentals 2/15/94

1. Small hole in fuel line found, 2/15/94.



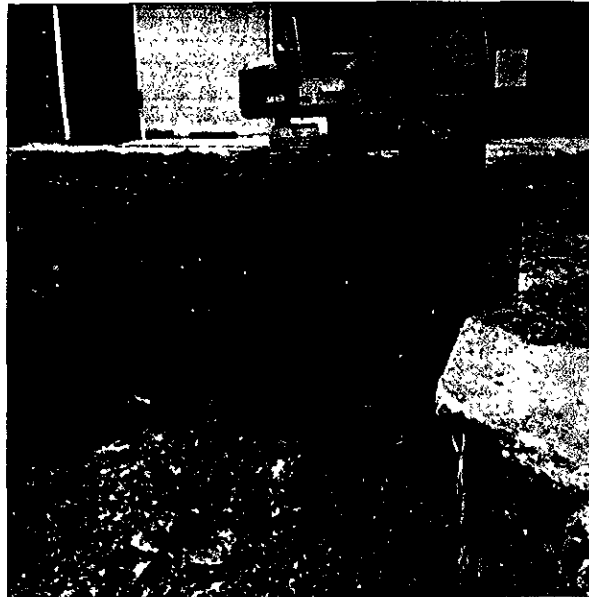
EAST SIDEWALL SAMPLE LOCAT.
Z-Rentals
2/15/94 12:30 - E5'

2. Location of east sidewall sample E5', 2/15/94



11:10 - 2/15/94 - NORTH WALL
Z-rentals OD.

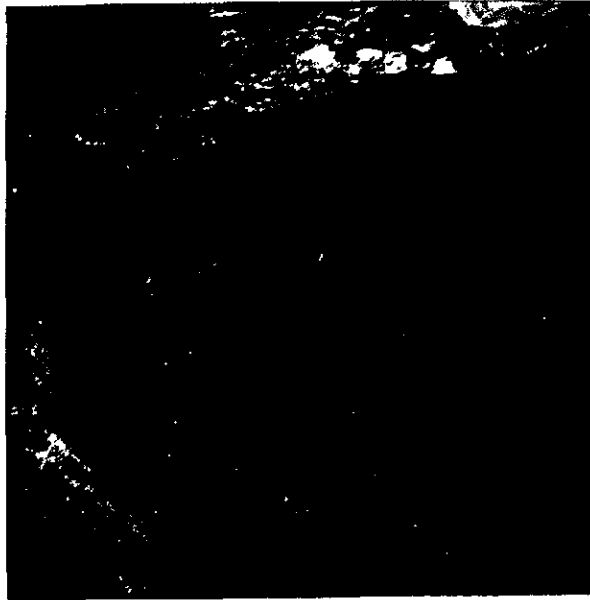
3. North sidewall of over excavation, 2/15/94 (PID 15ppm)



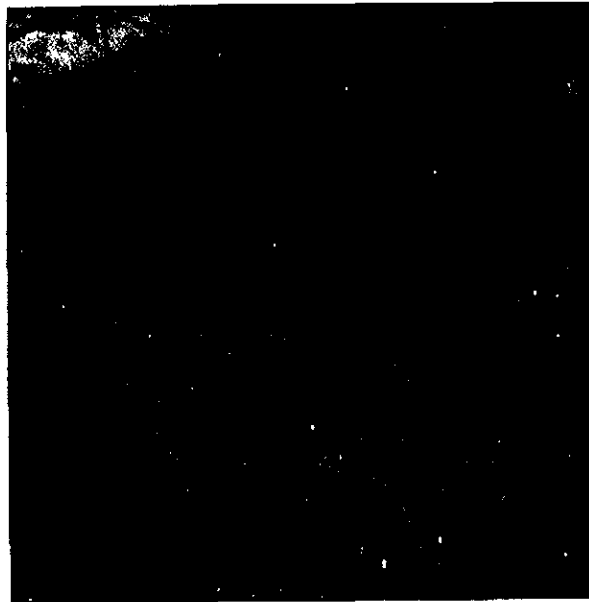
South sidewall
Z-rentals 2/15/95.
grey sand

4. South sidewall of over excavation, 2/15/94

711 Cleveland Avenue, Albany, Ca



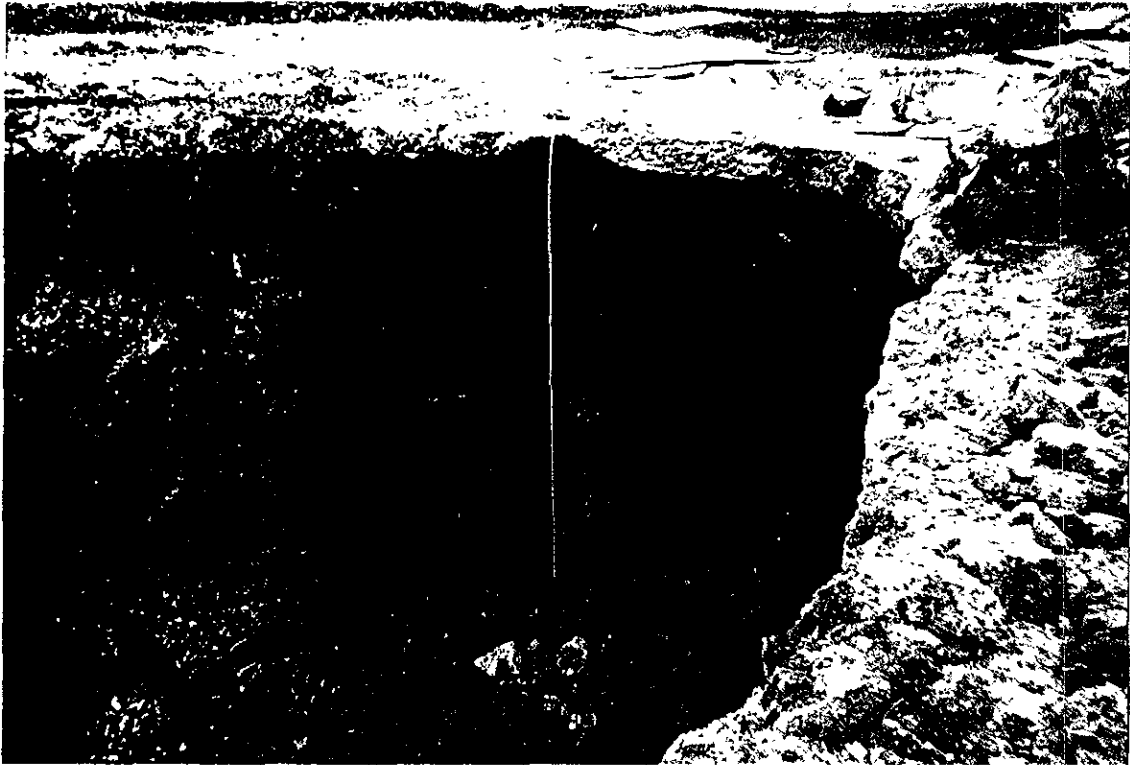
5. Location of South sidewall sample S7', 2/15/94



6. Location of North sidewall sample 2N6', 2/17/94

711 Cleveland Avenue, Albany, Ca





7. Location of South sidewall sample S7' (tape measurer indicates depth of 7 feet)



8. Location of South sidewall sample S7' (tape measurer indicates depth of 7 feet)

711 Cleveland Avenue, Albany, Ca

Analytical Results





Accutite	Client Project ID: Z-Rentals, Albany	Sampled: Feb 15, 1994
35 South Linden Avenue	Sample Matrix: Soil	Received: Feb 17, 1994
South San Francisco, CA 94080	Analysis Method: EPA 3550/8015	Reported: Mar 3, 1994
Attention: Amy Breckenridge	First Sample #: 4BC6301	

TOTAL EXTRACTABLE PETROLEUM HYDROCARBONS

Analyte	Reporting Limit mg/kg	Sample I.D. 4BC6301 E5'	Sample I.D. 4BC6302 B11.5'	Sample I.D. 4BC6303 2E7'	Sample I.D. 4BC6304 2W7'	Sample I.D. 4BC6305 S7'	Sample I.D. 4BC6306 1SP2/15/94 (A-D)
Extractable Hydrocarbons	1.0	N.D.	8.4	5.4	N.D.	42	280
Chromatogram Pattern:		--	Weathered Diesel	Weathered Diesel	--	Weathered Diesel	Weathered Diesel

Quality Control Data

Report Limit							
Multiplication Factor:	1.0	1.0	1.0	1.0	5.0	1.0	
Date Extracted:	2/24/94	2/24/94	2/24/94	2/24/94	2/24/94	2/24/94	2/24/94
Date Analyzed:	2/25/94	2/25/94	2/25/94	2/25/94	2/25/94	2/25/94	2/25/94
Instrument Identification:	GCHP-5	GCHP-5	GCHP-5	GCHP-5	GCHP-5	GCHP-5	GCHP-5

Extractable Hydrocarbons are quantitated against a fresh diesel standard.
Analytes reported as N.D. were not detected above the stated reporting limit.

SEQUOIA ANALYTICAL

Suzanne Chin
Project Manager



Accutite	Client Project ID: Z-Rentals, Albany	Sampled: Feb 15, 1994
35 South Linden Avenue	Sample Matrix: Soil	Received: Feb 17, 1994
South San Francisco, CA 94080	Analysis Method: EPA 3550/8015	Reported: Mar 3, 1994
Attention: Amy Breckenridge	First Sample #: 4BC6307	

TOTAL EXTRACTABLE PETROLEUM HYDROCARBONS

Analyte	Reporting Limit mg/kg	Sample I.D. 4BC6307 2SP2/15/94 (A-D)	Sample I.D. 4BC6308 3SP2/15/94 (A-D)
Extractable Hydrocarbons	1.0	2,000	620
Chromatogram Pattern:		Weathered Diesel	Weathered Diesel

Quality Control Data

Report Limit		
Multiplication Factor:	100	50
Date Extracted:	2/24/94	2/24/94
Date Analyzed:	2/25/94	2/25/94
Instrument Identification:	GCHP-5	GCHP-5

Extractable Hydrocarbons are quantitated against a fresh diesel standard.
Analytes reported as N.D. were not detected above the stated reporting limit.

SEQUOIA ANALYTICAL

Suzanne Chin
Project Manager



Accutite	Client Project ID: Z-Rentals, Albany	Sampled: Feb 15, 1994
35 South Linden Avenue	Sample Matrix: Soil	Received: Feb 17, 1994
South San Francisco, CA 94080	Analysis Method: EPA 5030/8015 Mod./8020	Reported: Mar 3, 1994
Attention: Amy Breckenridge	First Sample #: 4BC6301	

TOTAL PURGEABLE PETROLEUM HYDROCARBONS with BTEX DISTINCTION

Analyte	Reporting Limit mg/kg	Sample I.D. 4BC6301 E5'	Sample I.D. 4BC6302 B11.5'	Sample I.D. 4BC6303 2E7'	Sample I.D. 4BC6304 2W7'	Sample I.D. 4BC6305 S7'	Sample I.D. 4BC6306 1SP2/15/94 (A-D)
Purgeable Hydrocarbons	1.0	N.D.	N.D.	N.D.	N.D.	N.D.	1.6
Benzene	0.0050	N.D.	N.D.	N.D.	N.D.	N.D.	N.D.
Toluene	0.0050	N.D.	N.D.	N.D.	N.D.	N.D.	N.D.
Ethyl Benzene	0.0050	N.D.	N.D.	N.D.	N.D.	N.D.	N.D.
Total Xylenes	0.0050	N.D.	N.D.	N.D.	N.D.	N.D.	N.D.
Chromatogram Pattern:		--	--	--	--	--	Non-Gas Mix > C8

Quality Control Data

Report Limit	1.0	1.0	1.0	1.0	1.0	1.0
Multiplication Factor:						
Date Analyzed:	2/23/94	2/24/94	2/23/94	2/23/94	2/24/94	3/1/94
Instrument Identification:	GCHP-6	GCHP-6	GCHP-6	GCHP-6	GCHP-6	GCHP-6
Surrogate Recovery, %: (QC Limits = 70-130%)	76	93	86	87	82	102

Purgeable Hydrocarbons are quantitated against a fresh gasoline standard.
Analytes reported as N.D. were not detected above the stated reporting limit.

SEQUOIA ANALYTICAL

Suzanne Chin
Project Manager



Accutite	Client Project ID: Z-Rentals, Albany	Sampled: Feb 15, 1994
35 South Linden Avenue	Sample Matrix: Soil	Received: Feb 17, 1994
South San Francisco, CA 94080	Analysis Method: EPA 5030/8015 Mod./8020	Reported: Mar 3, 1994
Attention: Amy Breckenridge	First Sample #: 4BC6307	

TOTAL PURGEABLE PETROLEUM HYDROCARBONS with BTEX DISTINCTION

Analyte	Reporting Limit mg/kg	Sample I.D. 4BC6307 2SP2/15/94 (A-D)	Sample I.D. 4BC6308 3SP2/15/94 (A-D)
Purgeable Hydrocarbons	1.0	220	15
Benzene	0.0050	N.D.	N.D.
Toluene	0.0050	N.D.	0.074
Ethyl Benzene	0.0050	N.D.	0.068
Total Xylenes	0.0050	1.1	0.32
Chromatogram Pattern:		Non-Gas Mix > C6	Non-Gas Mix > C6

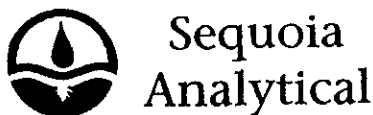
Quality Control Data

Report Limit		
Multiplication Factor:	1.0	1.0
Date Analyzed:	2/28/94	3/1/94
Instrument Identification:	GCHP-7	GCHP-6
Surrogate Recovery, %: (QC Limits = 70-130%)	107	88

Purgeable Hydrocarbons are quantitated against a fresh gasoline standard.
Analytes reported as N.D. were not detected above the stated reporting limit.

SEQUOIA ANALYTICAL


Suzanne Chin
Project Manager



680 Chesapeake Drive Redwood City, CA 94063 (415) 364-9600
1900 Bates Avenue, Suite L Concord, CA 94520 (510) 686-9600
819 Striker Avenue, Suite 8 Sacramento, CA 95834 (916) 921-9600

FAX (415) 364-9233
FAX (510) 686-9689
FAX (916) 921-0100

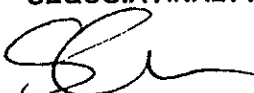
Accutite	Client Project ID: Z-Rentals, Albany	Sampled: Feb 15, 1994
35 South Linden Avenue	Sample Descript: Soil, E5'	Received: Feb 17, 1994
South San Francisco, CA 94080	Analysis Method: EPA 5030/8010	Analyzed: Feb 28, 1994
Attention: Amy Breckenridge	Lab Number: 4BC6301	Reported: Mar 3, 1994

HALOGENATED VOLATILE ORGANICS (EPA 8010)

Analyte	Detection Limit µg/kg	Sample Results µg/kg
Bromodichloromethane.....	5.0	N.D.
Bromoform.....	5.0	N.D.
Bromomethane.....	10	N.D.
Carbon tetrachloride.....	5.0	N.D.
Chlorobenzene.....	5.0	N.D.
Chloroethane.....	10	N.D.
2-Chloroethylvinyl ether.....	10	N.D.
Chloroform.....	5.0	N.D.
Chloromethane.....	10	N.D.
Dibromochloromethane.....	5.0	N.D.
1,3-Dichlorobenzene.....	5.0	N.D.
1,4-Dichlorobenzene.....	5.0	N.D.
1,2-Dichlorobenzene.....	5.0	N.D.
1,1-Dichloroethane.....	5.0	N.D.
1,2-Dichloroethane.....	5.0	N.D.
1,1-Dichloroethene.....	5.0	N.D.
cis-1,2-Dichloroethene.....	5.0	N.D.
trans-1,2-Dichloroethene.....	5.0	N.D.
1,2-Dichloropropane.....	5.0	N.D.
cis-1,3-Dichloropropene.....	5.0	N.D.
trans-1,3-Dichloropropene.....	5.0	N.D.
Methylene chloride.....	50	N.D.
1,1,2,2-Tetrachloroethane.....	5.0	N.D.
Tetrachloroethene.....	5.0	N.D.
1,1,1-Trichloroethane.....	5.0	N.D.
1,1,2-Trichloroethane.....	5.0	N.D.
Trichloroethene.....	5.0	N.D.
Trichlorofluoromethane.....	5.0	N.D.
Vinyl chloride.....	10	N.D.

Analytes reported as N.D. were not present above the stated limit of detection.

SEQUOIA ANALYTICAL


Suzanne Chin
Project Manager



**Sequoia
Analytical**

680 Chesapeake Drive
1900 Bates Avenue, Suite L
819 Striker Avenue, Suite 8

Redwood City, CA 94063
Concord, CA 94520
Sacramento, CA 95834

(415) 364-9600
(510) 686-9600
(916) 921-9600

FAX (415) 364-9233
FAX (510) 686-9689
FAX (916) 921-0100

Accutite	Client Project ID: Z-Rentals, Albany	Sampled: Feb 15, 1994
35 South Linden Avenue	Sample Descript: Soil, E5	Received: Feb 17, 1994
South San Francisco, CA 94080	Analysis Method: EPA 5030/8020	Analyzed: Feb 28, 1994
Attention: Amy Breckenridge	Lab Number: 4BC6301	Reported: Mar 3, 1994

AROMATIC VOLATILE ORGANICS (EPA 8020)

Analyte	Detection Limit µg/kg	Sample Results µg/kg
Benzene.....	5.0	N.D.
Chlorobenzene.....	5.0	N.D.
1,3-Dichlorobenzene.....	5.0	N.D.
1,4-Dichlorobenzene.....	5.0	N.D.
1,2-Dichlorobenzene.....	5.0	N.D.
Ethyl Benzene.....	5.0	N.D.
Toluene.....	5.0	N.D.
Xylene.....	5.0	N.D.

Analytes reported as N.D. were not present above the stated limit of detection.

SEQUOIA ANALYTICAL


Suzanne Chin
Project Manager



**Sequoia
Analytical**

680 Chesapeake Drive
1900 Bates Avenue, Suite L
819 Striker Avenue, Suite 8

Redwood City, CA 94063
Concord, CA 94520
Sacramento, CA 95834

(415) 364-9600
(510) 686-9600
(916) 921-9600

FAX (415) 364-9233
FAX (510) 686-9689
FAX (916) 921-0100

Accutite	Client Project ID: Z-Rentals, Albany	Sampled: Feb. 15, 1994
35 South Linden Avenue	Sample Descript: Soil, B11.5'	Received: Feb 17, 1994
South San Francisco, CA 94080	Analysis Method: EPA 5030/8020	Analyzed: Feb 28, 1994
Attention: Amy Breckenridge	Lab Number: 4BC6302	Reported: Mar 3, 1994

AROMATIC VOLATILE ORGANICS (EPA 8020)

Analyte	Detection Limit µg/kg	Sample Results µg/kg
Benzene.....	5.0	N.D.
Chlorobenzene.....	5.0	N.D.
1,3-Dichlorobenzene.....	5.0	N.D.
1,4-Dichlorobenzene.....	5.0	N.D.
1,2-Dichlorobenzene.....	5.0	N.D.
Ethyl Benzene.....	5.0	N.D.
Toluene.....	5.0	N.D.
Xylene.....	5.0	N.D.

Analytes reported as N.D. were not present above the stated limit of detection.

SEQUOIA ANALYTICAL

Suzanne Chin
Project Manager



**Sequoia
Analytical**

680 Chesapeake Drive
1900 Bates Avenue, Suite L
819 Striker Avenue, Suite 8

Redwood City, CA 94063
Concord, CA 94520
Sacramento, CA 95834

(415) 364-9600
(510) 686-9600
(916) 921-9600

FAX (415) 364-9233
FAX (510) 686-9689
FAX (916) 921-0100

Accutite	Client Project ID: Z-Rentals, Albany	Sampled: Feb 15, 1994
35 South Linden Avenue	Sample Descript: Soil, 2E7	Received: Feb 17, 1994
South San Francisco, CA 94080	Analysis Method: EPA 5030/8020	Analyzed: Feb 28, 1994
Attention: Amy Breckenridge	Lab Number: 4BC6303	Reported: Mar 3, 1994

AROMATIC VOLATILE ORGANICS (EPA 8020)

Analyte	Detection Limit µg/kg	Sample Results µg/kg
Benzene.....	5.0	N.D.
Chlorobenzene.....	5.0	N.D.
1,3-Dichlorobenzene.....	5.0	N.D.
1,4-Dichlorobenzene.....	5.0	N.D.
1,2-Dichlorobenzene.....	5.0	N.D.
Ethyl Benzene.....	5.0	N.D.
Toluene.....	5.0	N.D.
Xylene.....	5.0	N.D.

Analytes reported as N.D. were not present above the stated limit of detection.

SEQUOIA ANALYTICAL

Suzanne Chin
Project Manager



**Sequoia
Analytical**

680 Chesapeake Drive
1900 Bates Avenue, Suite L
819 Striker Avenue, Suite 8

Redwood City, CA 94063
Concord, CA 94520
Sacramento, CA 95834

(415) 364-9600
(510) 686-9600
(916) 921-9600

FAX (415) 364-9233
FAX (510) 686-9689
FAX (916) 921-0100

Accutite	Client Project ID: Z-Rentals, Albany	Sampled: Feb 15, 1994
35 South Linden Avenue	Sample Descript: Soil, 2W7	Received: Feb 17, 1994
South San Francisco, CA 94080	Analysis Method: EPA 5030/8020	Analyzed: Feb 28, 1994
Attention: Amy Breckenridge	Lab Number: 4BC6304	Reported: Mar 3, 1994

AROMATIC VOLATILE ORGANICS (EPA 8020)

Analyte	Detection Limit µg/kg	Sample Results µg/kg
Benzene.....	5.0	N.D.
Chlorobenzene.....	5.0	N.D.
1,3-Dichlorobenzene.....	5.0	N.D.
1,4-Dichlorobenzene.....	5.0	N.D.
1,2-Dichlorobenzene.....	5.0	N.D.
Ethyl Benzene.....	5.0	N.D.
Toluene.....	5.0	N.D.
Xylene.....	5.0	N.D.

Analytes reported as N.D. were not present above the stated limit of detection.

SEQUOIA ANALYTICAL

Suzanne Chin
Project Manager



Accutite	Client Project ID: Z-Rentals, Albany	Sampled: Feb 15, 1994
35 South Linden Avenue	Sample Descript: Soil, S7	Received: Feb 17, 1994
South San Francisco, CA 94080	Analysis Method: EPA 5030/8020	Analyzed: Feb 28, 1994
Attention: Amy Breckenridge	Lab Number: 4BC6305	Reported: Mar 3, 1994

AROMATIC VOLATILE ORGANICS (EPA 8020)

Analyte	Detection Limit µg/kg	Sample Results µg/kg
Benzene.....	5.0	N.D.
Chlorobenzene.....	5.0	N.D.
1,3-Dichlorobenzene.....	5.0	N.D.
1,4-Dichlorobenzene.....	5.0	N.D.
1,2-Dichlorobenzene.....	5.0	N.D.
Ethyl Benzene.....	5.0	N.D.
Toluene.....	5.0	N.D.
Xylene.....	5.0	N.D.

Analytes reported as N.D. were not present above the stated limit of detection.

SEQUOIA ANALYTICAL



Suzanne Chin
Project Manager



Accutite	Client Project ID: Z-Rentals, Albany	Sampled: Feb 15, 1994
35 South Linden Avenue	Sample Descript: Soil, E5	Received: Feb 17, 1994
South San Francisco, CA 94080	Analysis Method: EPA 8080	Extracted: Feb 24, 1994
Attention: Amy Breckenridge	Lab Number: 4BC6301	Analyzed: Feb 24, 1994
		Reported: Mar 3, 1994

ORGANOCHLORINE PESTICIDES AND PCB'S (EPA 8080)

Analyte	Detection Limit µg/kg	Sample Results µg/kg
Aldrin.....	1.0	N.D.
alpha-BHC.....	1.0	N.D.
beta-BHC.....	1.0	N.D.
delta-BHC.....	1.0	N.D.
gamma-BHC (Lindane).....	1.0	N.D.
Chlordane.....	20	N.D.
4,4'-DDD.....	6.0	N.D.
4,4'-DDE.....	2.0	N.D.
4,4'-DDT.....	6.0	N.D.
Dieldrin.....	2.0	N.D.
Endosulfan I.....	2.0	N.D.
Endosulfan II.....	2.0	N.D.
Endosulfan sulfate.....	6.0	N.D.
Endrin.....	2.0	N.D.
Endrin aldehyde.....	6.0	N.D.
Heptachlor.....	1.0	N.D.
Heptachlor epoxide.....	1.0	N.D.
Methoxychlor.....	20	N.D.
Toxaphene.....	80	N.D.
PCB-1016.....	20	N.D.
PCB-1221.....	80	N.D.
PCB-1232.....	20	N.D.
PCB-1242.....	20	N.D.
PCB-1248.....	20	N.D.
PCB-1254.....	20	N.D.
PCB-1260.....	20	N.D.

Analytes reported as N.D. were not present above the stated limit of detection.

SEQUOIA ANALYTICAL

Suzanne Chin
Project Manager



Accutite	Client Project ID: Z-Rentals, Albany	Sampled: Feb 15, 1994
35 South Linden Avenue	Sample Descript: Soil, B11.5'	Received: Feb 17, 1994
South San Francisco, CA 94080	Analysis Method: EPA 8080	Extracted: Feb 24, 1994
Attention: Amy Breckenridge	Lab Number: 4BC6302	Analyzed: Feb 24, 1994
		Reported: Mar 3, 1994

ORGANOCHLORINE PESTICIDES AND PCB'S (EPA 8080)

Analyte	Detection Limit µg/kg	Sample Results µg/kg
Aldrin.....	1.0	N.D.
alpha-BHC.....	1.0	N.D.
beta-BHC.....	1.0	N.D.
delta-BHC.....	1.0	N.D.
gamma-BHC (Lindane).....	1.0	N.D.
Chlordane.....	20	N.D.
4,4'-DDD.....	6.0	N.D.
4,4'-DDE.....	2.0	N.D.
4,4'-DDT.....	6.0	N.D.
Dieldrin.....	2.0	N.D.
Endosulfan I.....	2.0	N.D.
Endosulfan II.....	2.0	N.D.
Endosulfan sulfate.....	6.0	N.D.
Endrin.....	2.0	N.D.
Endrin aldehyde.....	6.0	N.D.
Heptachlor.....	1.0	N.D.
Heptachlor epoxide.....	1.0	N.D.
Methoxychlor.....	20	N.D.
Toxaphene.....	80	N.D.
PCB-1016.....	20	N.D.
PCB-1221.....	80	N.D.
PCB-1232.....	20	N.D.
PCB-1242.....	20	N.D.
PCB-1248.....	20	N.D.
PCB-1254.....	20	N.D.
PCB-1260.....	20	N.D.

Analytes reported as N.D. were not present above the stated limit of detection.

SEQUOIA ANALYTICAL


Suzanne Chln
Project Manager



Accutite
35 South Linden Avenue
South San Francisco, CA 94080
Attention: Amy Breckenridge

Client Project ID: Z-Rentals; Albany
Sample Descript: Soil, 2E7
Analysis Method: EPA 8080
Lab Number: 4BC6303

Sampled: Feb 15, 1994
Received: Feb 17, 1994
Extracted: Feb 24, 1994
Analyzed: Feb 24, 1994
Reported: Mar 3, 1994

ORGANOCHLORINE PESTICIDES AND PCB'S (EPA 8080)

Analyte	Detection Limit µg/kg	Sample Results µg/kg
Aldrin.....	1.0	N.D.
alpha-BHC.....	1.0	N.D.
beta-BHC.....	1.0	N.D.
delta-BHC.....	1.0	N.D.
gamma-BHC (Lindane).....	1.0	N.D.
Chlordane.....	20	N.D.
4,4'-DDD.....	6.0	N.D.
4,4'-DDE.....	2.0	N.D.
4,4'-DDT.....	6.0	N.D.
Dieldrin.....	2.0	N.D.
Endosulfan I.....	2.0	N.D.
Endosulfan II.....	2.0	N.D.
Endosulfan sulfate.....	6.0	N.D.
Endrin.....	2.0	N.D.
Endrin aldehyde.....	6.0	N.D.
Heptachlor.....	1.0	N.D.
Heptachlor epoxide.....	1.0	N.D.
Methoxychlor.....	20	N.D.
Toxaphene.....	80	N.D.
PCB-1016.....	20	N.D.
PCB-1221.....	80	N.D.
PCB-1232.....	20	N.D.
PCB-1242.....	20	N.D.
PCB-1248.....	20	N.D.
PCB-1254.....	20	N.D.
PCB-1260.....	20	N.D.

Analytes reported as N.D. were not present above the stated limit of detection.

SEQUOIA ANALYTICAL

Suzanne Chin
Project Manager



Accutite	Client Project ID: Z-Rentals, Albany	Sampled: Feb 15, 1994
35 South Linden Avenue	Sample Descript: Soil, S7	Received: Feb 17, 1994
South San Francisco, CA 94080	Analysis Method: EPA 8080	Extracted: Feb 24, 1994
Attention: Amy Breckenridge	Lab Number: 4BC6305	Analyzed: Feb 24, 1994
		Reported: Mar 3, 1994

ORGANOCHLORINE PESTICIDES AND PCB'S (EPA 8080)

Analyte	Detection Limit µg/kg	Sample Results µg/kg
Aldrin.....	5.0	N.D.
alpha-BHC.....	5.0	N.D.
beta-BHC.....	5.0	N.D.
delta-BHC.....	5.0	N.D.
gamma-BHC (Lindane).....	5.0	N.D.
Chlordane.....	100	N.D.
4,4'-DDD.....	30	41
4,4'-DDE.....	10	N.D.
4,4'-DDT.....	30	N.D.
Dieldrin.....	10	N.D.
Endosulfan I.....	10	N.D.
Endosulfan II.....	10	N.D.
Endosulfan sulfate.....	30	N.D.
Endrin.....	10	N.D.
Endrin aldehyde.....	30	N.D.
Heptachlor.....	5.0	N.D.
Heptachlor epoxide.....	5.0	N.D.
Methoxychlor.....	100	N.D.
Toxaphene.....	400	N.D.
PCB-1016.....	100	N.D.
PCB-1221.....	400	N.D.
PCB-1232.....	100	N.D.
PCB-1242.....	100	N.D.
PCB-1248.....	100	N.D.
PCB-1254.....	100	N.D.
PCB-1260.....	100	N.D.

Analytes reported as N.D. were not present above the stated limit of detection. Because matrix effects and/or other factors required additional sample dilution, detection limits for this sample have been raised.

SEQUOIA ANALYTICAL


Suzanne Chin
Project Manager



**Sequoia
Analytical**

680 Chesapeake Drive
1900 Bates Avenue, Suite L
819 Striker Avenue, Suite 8

Redwood City, CA 94063
Concord, CA 94520
Sacramento, CA 95834

(415) 364-9600
(510) 686-9600
(916) 921-9600

FAX (415) 364-9233
FAX (510) 686-9689
FAX (916) 921-0100

Accutite
35 South Linden Avenue
South San Francisco, CA 94080
Attention: Amy Breckenridge

Client Project ID: Z-Rentals, Albany
Sample Descript: Soil, E5'
Lab Number: 4BC6301

Sampled: Feb 15, 1994
Received: Feb 17, 1994
Analyzed: see below
Reported: Mar 3, 1994

LABORATORY ANALYSIS

Analyte	Date Analyzed	Detection Limit mg/kg	Sample Result mg/kg
Lead.....	2/24/94	5.0	N.D.

Analytes reported as N.D. were not present above the stated limit of detection.

SEQUOIA ANALYTICAL

Suzanne Chin
Project Manager



Accutite
35 South Linden Avenue
South San Francisco, CA 94080
Attention: Amy Breckenridge

Client Project ID: Z-Rentals, Albany
Matrix: Solid

QC Sample Group: 4BC6301-08

Reported: Mar 3, 1994

QUALITY CONTROL DATA REPORT

ANALYTE	Diesel	Benzene	Toluene	Ethyl Benzene	Xylenes
Method:	EPA 8015	EPA 8020	EPA 8020	EPA 8020	EPA 8020
Analyst:	A. Nagra	T. Costello	T. Costello	T. Costello	T. Costello

MS/MSD Batch#:	4BA1201	4BA7602	4BA7602	4BA7602	4BA7602
Date Prepared:	2/18/94	2/23/94	2/23/94	2/23/94	2/23/94
Date Analyzed:	2/18/94	2/23/94	2/23/94	2/23/94	2/23/94
Instrument I.D.#:	GCHP-5	GCHP-6	GCHP-6	GCHP-6	GCHP-6
Conc. Spiked:	15 mg/kg	0.20 mg/kg	0.20 mg/kg	0.20 mg/kg	0.60 mg/kg
Matrix Spike % Recovery:	59	85	95	95	95
Matrix Spike Duplicate % Recovery:	55	95	100	100	102
Relative % Difference:	7.0	11	5.0	5.0	6.9

LCS Batch#:	-	-	-	-	-
Date Prepared:	-	-	-	-	-
Date Analyzed:	-	-	-	-	-
Instrument I.D.#:	-	-	-	-	-
LCS % Recovery:	-	-	-	-	-

% Recovery Control Limits:	38-122	55-145	47-149	47-155	56-140
----------------------------	--------	--------	--------	--------	--------

SEQUOIA ANALYTICAL

Suzanne Chin
Project Manager

Please Note:

The LCS is a control sample of known, interferent free matrix that is analyzed using the same reagents, preparation, and analytical methods employed for the samples. The matrix spike is an aliquot of sample fortified with known quantities of specific compounds and subjected to the entire analytical procedure. If the recovery of analytes from the matrix spike does not fall within specified control limits due to matrix interference, the LCS recovery is to be used to validate the batch.



680 Chesapeake Drive Redwood City, CA 94063 (415) 364-9600 FAX (415) 364-9233
 1900 Bates Avenue, Suite L Concord, CA 94520 (510) 686-9600 FAX (510) 686-9689
 819 Striker Avenue, Suite 8 Sacramento, CA 95834 (916) 921-9600 FAX (916) 921-0100

Accutite
 35 South Linden Avenue
 South San Francisco, CA 94080
 Attention: Amy Breckenridge

Client Project ID: Z-Rentals, Albany
 Matrix: Solid

QC Sample Group: 4BC6301

Reported: Mar 3, 1994

QUALITY CONTROL DATA REPORT

ANALYTE	1,1-Dichloro- ethene	Trichloro- ethene	Chloro- benzene
Method:	EPA 8010	EPA 8010	EPA 8010
Analyst:	D. George	D. George	D. George

MS/MSD			
Batch#:	4BC6301	4BC6301	4BC6301
Date Prepared:	2/28/94	2/28/94	2/28/94
Date Analyzed:	2/28/94	2/28/94	2/28/94
Instrument I.D.#:	GCHP-15	GCHP-15	GCHP-15
Conc. Spiked:	25 µg/kg	25 µg/kg	25 µg/kg
Matrix Spike			
% Recovery:	100	88	104
Matrix Spike Duplicate %			
Recovery:	92	76	88
Relative %			
Difference:	8.3	15	17

LCS Batch#:	-	-	-
Date Prepared:	-	-	-
Date Analyzed:	-	-	-
Instrument I.D.#:	-	-	-
LCS %			
Recovery:	-	-	-

% Recovery			
Control Limits:	28-167	35-146	38-150

Please Note:

The LCS is a control sample of known, interferent free matrix that is analyzed using the same reagents, preparation, and analytical methods employed for the samples. The matrix spike is an aliquot of sample fortified with known quantities of specific compounds and subjected to the entire analytical procedure. If the recovery of analytes from the matrix spike does not fall within specified control limits due to matrix interference, the LCS recovery is to be used to validate the batch.

SEQUOIA ANALYTICAL

Suzanne Chln
 Project Manager



Accutite
35 South Linden Avenue
South San Francisco, CA 94080
Attention: Amy Breckenridge

Client Project ID: Z-Rentals, Albany
Matrix: Solid

QC Sample Group: 4BC6301-05

Reported: Mar 3, 1994

QUALITY CONTROL DATA REPORT

ANALYTE	Benzene	Toluene	Chloro-benzene
Method:	EPA 8020	EPA 8020	EPA 8020
Analyst:	D. George	D. George	D. George

MS/MSD			
Batch#:	4BC6301	4BC6301	4BC6301
Date Prepared:	2/28/94	2/28/94	2/28/94
Date Analyzed:	2/28/94	2/28/94	2/28/94
Instrument I.D.#:	GCHP-15	GCHP-15	GCHP-15
Conc. Spiked:	25 µg/kg	25 µg/kg	25 µg/kg
Matrix Spike			
% Recovery:	124	112	104
Matrix Spike Duplicate			
% Recovery:	116	108	100
Relative % Difference:	6.7	3.6	3.9

LCS Batch#:	-	-	-
Date Prepared:	-	-	-
Date Analyzed:	-	-	-
Instrument I.D.#:	-	-	-
LCS % Recovery:	-	-	-

% Recovery Control Limits:	39-150	46-148	55-135
-----------------------------------	--------	--------	--------

Please Note:

The LCS is a control sample of known, interferent free matrix that is analyzed using the same reagents, preparation, and analytical methods employed for the samples. The matrix spike is an aliquot of sample fortified with known quantities of specific compounds and subjected to the entire analytical procedure. If the recovery of analytes from the matrix spike does not fall within specified control limits due to matrix interference, the LCS recovery is to be used to validate the batch.

SEQUOIA ANALYTICAL

Suzanne Chin
Project Manager



Accutite
35 South Linden Avenue
South San Francisco, CA 94080
Attention: Amy Breckenridge

Client Project ID: Z-Rentals, Albany
Matrix: Solid

QC Sample Group: 4BC6301-03, 05

Reported: Mar 3, 1994

QUALITY CONTROL DATA REPORT

ANALYTE	Dieldrin	Aldrin	Heptachlor
Method:	EPA 8080	EPA 8080	EPA 8080
Analyst:	A. Savva	A. Savva	A. Savva

MS/MSD			
Batch#:	4BC6301	4BC6301	4BC6301
Date Prepared:	2/24/94	2/24/94	2/24/94
Date Analyzed:	2/24/94	2/24/94	2/24/94
Instrument I.D.#:	GCPE-5	GCPE-5	GCPE-5
Conc. Spiked:	80 µg/kg	80 µg/kg	80 µg/kg
Matrix Spike			
% Recovery:	95	85	80
Matrix Spike Duplicate % Recovery:	98	85	85
Relative % Difference:	3.1	0.0	6.1

LCS Batch#:	BLK022494	BLK022494	BLK022494
Date Prepared:	2/24/94	2/24/94	2/24/94
Date Analyzed:	2/24/94	2/24/94	2/24/94
Instrument I.D.#:	GCPE-5	GCPE-5	GCPE-5
LCS % Recovery:	96	90	95

% Recovery Control Limits:	10-176	31-170	35-145
-----------------------------------	--------	--------	--------

Please Note:

The LCS is a control sample of known, interferent free matrix that is analyzed using the same reagents, preparation, and analytical methods employed for the samples. The matrix spike is an aliquot of sample fortified with known quantities of specific compounds and subjected to the entire analytical procedure. If the recovery of analytes from the matrix spike does not fall within specified control limits due to matrix interference, the LCS recovery is to be used to validate the batch.

SEQUOIA ANALYTICAL

Suzanne Chin
Project Manager



Accutite
 35 South Linden Avenue
 South San Francisco, CA 94080
 Attention: Amy Breckenridge

Client Project ID: Z-Rentals, Albany
 Matrix: Solid

QC Sample Group: 4BC6301

Reported: Mar 3, 1994

QUALITY CONTROL DATA REPORT

ANALYTE	Beryllium	Cadmium	Chromium	Nickel
Method:	EPA 6010	EPA 6010	EPA 6010	EPA 6010
Analyst:	S. O'Donnell	S. O'Donnell	S. O'Donnell	S. O'Donnell

MS/MSD	Beryllium	Cadmium	Chromium	Nickel
Batch#:	4BC6301	4BC6301	4BC6301	4BC6301
Date Prepared:	2/24/94	2/24/94	2/24/94	2/24/94
Date Analyzed:	2/24/94	2/24/94	2/24/94	2/24/94
Instrument I.D.#:	MTJA-2	MTJA-2	MTJA-2	MTJA-2
Conc. Spiked:	100 mg/kg	100 mg/kg	100 mg/kg	100 mg/kg
Matrix Spike % Recovery:	95	94	97	103
Matrix Spike Duplicate % Recovery:	95	94	97	103
Relative % Difference:	0.0	0.0	0.0	0.0

LCS Batch#:	BLK022494	BLK022494	BLK022494	BLK022494
Date Prepared:	2/24/94	2/24/94	2/24/94	2/24/94
Date Analyzed:	2/24/94	2/24/94	2/24/94	2/24/94
Instrument I.D.#:	MTJA-2	MTJA-2	MTJA-2	MTJA-2
LCS % Recovery:	98	98	100	99

% Recovery Control Limits:	Beryllium	Cadmium	Chromium	Nickel
	75-125	75-125	75-125	75-125

Please Note:

The LCS is a control sample of known, interferent free matrix that is analyzed using the same reagents, preparation, and analytical methods employed for the samples. The matrix spike is an aliquot of sample fortified with known quantities of specific compounds and subjected to the entire analytical procedure. If the recovery of analytes from the matrix spike does not fall within specified control limits due to matrix interference, the LCS recovery is to be used to validate the batch.

SEQUOIA ANALYTICAL

Suzanne Chin
 Project Manager

CHAIN OF CUSTODY

CLIENT: ACCUTITE ENVIRONMENTAL ENGINEERING				REPORT TO: Amy Breckenridge		TURNAROUND TIME:							
ADDRESS: 35 S. LINDEN SOUTH SAN FRANCISCO, CA 94080				BILLING TO: ACCUTITE		3 HR	24 HR	15 HR	2-3				
PHONE #: (415) 952-5551				BILLING REFERENCE #: 141		5 DAY	10 DAY	X	OTHER				
PROJECT NAME ADDRESS: Z-Rentals 711 Cleveland, Albany				ANALYSIS REQUESTED:		REMARKS							
SAMPLER: Amy Breckenridge		DATE: 2/15/94		TPH-D						TPH-G/STEX		EPA 8020	
SAMPLER ID:		SAMPLE NUMBER:		TYPE						SAMPLING		DATE/TIME	
STATION		DESCRIPTION		OF CONT						CONT		DATE/TIME	
- ES'		SOIL		1						Brass 2"		12:40	
- B 11.5'												2:05	
- 2 EF'												5:40	
- 2 WF'												6:00	
- S 7'												6:30	
ISP 2/15/94 ^{A-D}				4								1:45	
2SP 2/15/94 ^{A-D}				"				6:00					
3SP 2/15/94 ^{A-D}				"		V		6:45					
RELINQUISHED BY: Amy Breckenridge				DATE: 2/16/94		TIME: 9:20		RECEIVED BY: Palm Henge					
RELINQUISHED BY:				DATE:		TIME:		RECEIVED BY:					
RELINQUISHED BY:				DATE:		TIME:		RECEIVED BY:					

Note: 8010/8020 Halog. Vial. K. for use



Accutite	Client Project ID: Z-Rentals, Albany	Sampled: Feb 17, 1994
35 South Linden Avenue	Sample Matrix: Soil	Received: Feb 18, 1994
South San Francisco, CA 94080	Analysis Method: EPA 5030/8015 Mod./8020	Reported: Mar 3, 1994
Attention: Amy Breckenridge	First Sample #: 4BD8001	

TOTAL PURGEABLE PETROLEUM HYDROCARBONS with BTEX DISTINCTION

Analyte	Reporting Limit mg/kg	Sample I.D. 4BD8001-2N6	Sample I.D. 4BD8002-4SP	Sample I.D. 4BD8003-5SP
Purgeable Hydrocarbons	1.0	N.D.	73	15
Benzene	0.0050	N.D.	N.D.	N.D.
Toluene	0.0050	N.D.	N.D.	N.D.
Ethyl Benzene	0.0050	N.D.	0.072	N.D.
Total Xylenes	0.0050	N.D.	0.24	0.013
Chromatogram Pattern:		--	Non-Gas Mix >C6	Non-Gas Mix >C6

Quality Control Data

Report Limit				
Multiplication Factor:	1.0	5.0	1.0	
Date Analyzed:	2/28/94	3/1/94	3/2/94	
Instrument Identification:	GCHP-7	GCHP-6	GCHP-7	
Surrogate Recovery, %: (QC Limits = 70-130%)	84	103	76	

Purgeable Hydrocarbons are quantitated against a fresh gasoline standard.
Analytes reported as N.D. were not detected above the stated reporting limit.

SEQUOIA ANALYTICAL

Suzanne Chin
Project Manager



Accutite	Client Project ID: Z-Rentals, Albany	Sampled: Feb 17, 1994
35 South Linden Avenue	Sample Matrix: Soil	Received: Feb 18, 1994
South San Francisco, CA 94080	Analysis Method: EPA 3550/8015	Reported: Mar 3, 1994
Attention: Amy Breckenridge	First Sample #: 4BD8001	

TOTAL EXTRACTABLE PETROLEUM HYDROCARBONS

Analyte	Reporting Limit mg/kg	Sample I.D. 4BD8001 2N6	Sample I.D. 4BD8002 4SP	Sample I.D. 4BD8003 5SP
Extractable Hydrocarbons	1.0	N.D.	2,100	85
Chromatogram Pattern:		--	Diesel	Diesel

Quality Control Data

Report Limit			
Multiplication Factor:	1.0	50	2.0
Date Extracted:	2/25/94	2/25/94	2/25/94
Date Analyzed:	2/28/94	2/28/94	2/28/94
Instrument Identification:	GCHP-5	GCHP-5	GCHP-5

Extractable Hydrocarbons are quantitated against a fresh diesel standard.
Analytes reported as N.D. were not detected above the stated reporting limit.

SEQUOIA ANALYTICAL

Suzanne Chin
Project Manager



Accutite
 35 South Linden Avenue
 South San Francisco, CA 94080
 Attention: Amy Breckenridge

Client Project ID: Z-Rentals, Albany
 Matrix: Solid

QC Sample Group: 4BD8001-03

Reported: Mar 3, 1994

QUALITY CONTROL DATA REPORT

ANALYTE	Benzene	Toluene	Ethyl Benzene	Xylenes	Diesel
Method:	EPA 8020	EPA 8020	EPA 8020	EPA 8020	EPA 8015
Analyst:	E. Cunanan	E. Cunanan	E. Cunanan	E. Cunanan	D. Tran

MS/MSD	Benzene	Toluene	Ethyl Benzene	Xylenes	Diesel
Batch#:	4B96201	4B96201	4B96201	4B96201	4BE7101
Date Prepared:	2/24/94	2/24/94	2/24/94	2/24/94	2/25/94
Date Analyzed:	2/25/94	2/25/94	2/25/94	2/25/94	2/25/94
Instrument I.D.#:	GCHP-18	GCHP-18	GCHP-18	GCHP-18	GCHP-5
Conc. Spiked:	0.20 mg/kg	0.20 mg/kg	0.20 mg/kg	0.60 mg/kg	15 mg/kg
Matrix Spike % Recovery:	85	85	85	88	86
Matrix Spike Duplicate % Recovery:	85	90	90	88	95
Relative % Difference:	0.0	5.7	5.7	0.0	9.9

LCS Batch#:	-	-	-	-	BLK022594
Date Prepared:	-	-	-	-	2/25/94
Date Analyzed:	-	-	-	-	2/25/94
Instrument I.D.#:	-	-	-	-	GCHP-5
LCS % Recovery:	-	-	-	-	67

% Recovery Control Limits:	55-145	47-149	47-155	56-140	38-122
----------------------------	--------	--------	--------	--------	--------

Please Note:

The LCS is a control sample of known, interferent free matrix that is analyzed using the same reagents, preparation, and analytical methods employed for the samples. The matrix spike is an aliquot of sample fortified with known quantities of specific compounds and subjected to the entire analytical procedure. If the recovery of analytes from the matrix spike does not fall within specified control limits due to matrix interference, the LCS recovery is to be used to validate the batch.

SEQUOIA ANALYTICAL

Suzanne Chin
 Project Manager

CHAIN OF CUSTODY

CLIENT: ACCUTITE ENVIRONMENTAL ENGINEERING				REPORT TO: <i>A. Breckenridge</i>				TURNAROUND TIME:							
ADDRESS: 35 S. LINDEN SOUTH SAN FRANCISCO, CA 94080				BILLING TO: ACCUTITE				8 HR		24 HR		48 HR		72 HR	
PHONE: (415) 952-5551				BILLING REFERENCE #: 177				5 DAY		10 DAY <input checked="" type="checkbox"/>		OTHER			
PROJECT NAME ADDRESS: <i>Z-Rentals 711 Cleveland, Albany</i>				ANALYSIS REQUESTED:				9402080 SAMPLE NUMBER							
SAMPLER: <i>Bulmar Godinez</i> DATE: <i>2/17/94</i>				TRIT-G/BTEX TPAD											
SAMPLE ID#	SAMPLE STATION	NUMBER OF CONT	TYPE CONT	SAMPLING DATE/TIME	TRIT	G/BTEX	TPAD	REMARKS							
<i>2NG'</i>	<i>Soil</i>	<i>1</i>	<i>Brass</i>		<input checked="" type="checkbox"/>	<input checked="" type="checkbox"/>		9402080-01							
<i>3EG'</i>	<i>↓</i>	<i>1</i>						hold							
<i>HSP</i>	<i>↓</i>	<i>4</i>		<i>2pm</i>	<input checked="" type="checkbox"/>	<input checked="" type="checkbox"/>		-02							
<i>SSP</i>	<i>↓</i>	<i>4</i>			<input checked="" type="checkbox"/>	<input checked="" type="checkbox"/>		-03							
RELINQUISHED BY: <i>Bulmar Godinez</i> DATE: <i>2/18/94</i> TIME: <i>8:45</i>				RECEIVED BY: <i>Steve Tar</i>				LAB COMMENTS:							
RELINQUISHED BY: <i>Steve Tar</i> DATE: <i>2/18/94</i> TIME: <i>1:40</i>				RECEIVED BY: <i>B. Davies</i>				2/18/94 (13:40)							
RELINQUISHED BY:				DATE:				TIME:				RECEIVED BY: -			

(E) 10 1

15 Feb 94
Z Rent OD2

**ACDEH
Inspection Report**

711 Cleveland Avenue, Albany, Ca



ALAMEDA COUNTY, DEPARTMENT OF ENVIRONMENTAL HEALTH

80 Swan Way, #200
Oakland, CA 94621
(415) 271-4320

Hazardous Materials Division Inspection Form

Site ID# 1565 Site Name Z-Rental Properties Today's Date 2/15/94
 Site Address 711 Cleveland Ave EPA ID# _____
 City Albany Zip 94501 Phone _____

MAX Amt. Stored > 500lbs/55g/200cf? Y N
 Hazardous Waste generated per month? _____

Inspection Categories:

- I. Haz. Mat/Waste GENERATOR/TRANSPORTER
- II. Business Plans, Acute Hazardous Materials
- III. Underground Tanks

The marked items represent violations of the Calif. Administration Code (CAC) or the Health & Safety Code (HS&C)

A GENERATOR (Title 22)	
<input type="checkbox"/> 1. Waste ID	66471
<input type="checkbox"/> 2. EPA ID	66472
<input type="checkbox"/> 3. > 90 days	66508
<input type="checkbox"/> 4. Label dates	66508
<input type="checkbox"/> 5. Biennial	66493
<input type="checkbox"/> 6. Records	66492
<input type="checkbox"/> 7. Correct	66484
<input type="checkbox"/> 8. Copy sent	66492
<input type="checkbox"/> 9. Exception	66484
<input type="checkbox"/> 10. Copies Rec'd	66492
<input type="checkbox"/> 11. Treatment	66371
<input type="checkbox"/> 12. On-site Disp. (H.S.&C.)	26189.5
<input type="checkbox"/> 13. Ex Haz. Waste	66570
<input type="checkbox"/> 14. Communications	67121
<input type="checkbox"/> 15. Aisle Space	67124
<input type="checkbox"/> 16. Local Authority	67126
<input type="checkbox"/> 17. Maintenance	67120
<input type="checkbox"/> 18. Training	67105
<input type="checkbox"/> 19. Prepared	67140
<input type="checkbox"/> 20. Name List	67141
<input type="checkbox"/> 21. Copies	67141
<input type="checkbox"/> 22. Emg. Coord. Trng.	67144
<input type="checkbox"/> 23. Condition	67241
<input type="checkbox"/> 24. Compatibility	67242
<input type="checkbox"/> 25. Maintenance	67243
<input type="checkbox"/> 26. Inspection	67244
<input type="checkbox"/> 27. Buffer Zone	67246
<input type="checkbox"/> 28. Tank Inspection	67259
<input type="checkbox"/> 29. Containment	67245
<input type="checkbox"/> 30. Safe Storage	67261
<input type="checkbox"/> 31. Freeboard	67257

B TRANSPORTER (Title 22)	
<input type="checkbox"/> 32. Applic./Insurance	66428
<input type="checkbox"/> 33. Comp. Cert./CHP Insp.	66448
<input type="checkbox"/> 34. Containers	66465
<input type="checkbox"/> 35. Vehicles	66465
<input type="checkbox"/> 36. EPA ID #s	66531
<input type="checkbox"/> 37. Correct	66541
<input type="checkbox"/> 38. HW Delivery	66543
<input type="checkbox"/> 39. Records	66544
<input type="checkbox"/> 40. Name/ Covers	66545
<input type="checkbox"/> 41. Recyclables	66800

Comments:

Came out to site to witness overexcavation sampling of the former tank pit at the east and south sidewalls. Tank pit had been enlarged through overexcavation, and had revealed more stained soil on the north & east wall. An interim scoop of soil from the east wall was sniffed w/ PID. It had odor and PID gave reading of 6 ppm. PID gave reading of 15 ppm from north wall. Odor from pit. The pit needed to be overexcavated quite a bit more to the north, east, and south, so I left the site at 11:00 A; w/ intention of coming back out at 3:30 P to witness sampling. Came back out to witness sampling from excavation at ~3:35 P. East sidewall sample and bottom sample already collected, one at 5' bgs and the bottom sample at ~11' bgs. Apparent staining still remains in place on East sidewall. Stinky soil was noted on southern end of excavation, and greater odors & readings on PID from this soil. On the end that gasoline used to be. Stained soil still on areas of

Contact: Amy Breckenridge Acutite
 Title: Amy Breckenridge Inspector: Juliet Shin
 Signature: Project Engineer Signature: Juliet Shin

ALAMEDA COUNTY, DEPARTMENT OF ENVIRONMENTAL HEALTH

80 Swan Way, #200
Oakland, CA 94621
(415) 271-4320

Hazardous Materials Division Inspection Form

Site ID# 1535 Site Name Z-Rental Properties Today's Date 2/15/94
 Site Address 711 Cleveland Ave. EPA ID# _____
 City Albany Zip 94 Phone _____

MAX Amt. Stored > 500lbs/55g/200cf? Y N
 Hazardous Waste generated per month? _____

Inspection Categories:

- I. Haz. Mat/Waste GENERATOR/TRANSPORTER
- II. Business Plans, Acute Hazardous Materials
- III. Underground Tanks

The marked items represent violations of the Calif. Administration Code (CAC) or the Health & Safety Code (HS&C)

LA GENERATOR (Title 22)	
<input type="checkbox"/> 1. Waste ID	66471
<input type="checkbox"/> 2. EPA ID	66472
<input type="checkbox"/> 3. > 90 days	66508
<input type="checkbox"/> 4. Label dates	66508
<input type="checkbox"/> 5. Biennial	66493
<hr/>	
<input type="checkbox"/> 6. Records	66492
<input type="checkbox"/> 7. Correct	66484
<input type="checkbox"/> 8. Copy sent	66492
<input type="checkbox"/> 9. Exception	66484
<input type="checkbox"/> 10. Copies Rec'd	66492
<hr/>	
<input type="checkbox"/> 11. Treatment	66371
<input type="checkbox"/> 12. On-site Dtp. (H.S.&C.)	26189.5
<input type="checkbox"/> 13. Ex Haz. Waste	66570
<hr/>	
<input type="checkbox"/> 14. Communications	67121
<input type="checkbox"/> 15. Aisle Space	67124
<input type="checkbox"/> 16. Local Authority	67126
<input type="checkbox"/> 17. Maintenance	67120
<input type="checkbox"/> 18. Training	67105
<hr/>	
<input type="checkbox"/> 19. Prepared	67140
<input type="checkbox"/> 20. Name List	67141
<input type="checkbox"/> 21. Copies	67141
<input type="checkbox"/> 22. Emp. Coord. Trng.	67144
<hr/>	
<input type="checkbox"/> 23. Condition	67241
<input type="checkbox"/> 24. Compatibility	67242
<input type="checkbox"/> 25. Maintenance	67243
<input type="checkbox"/> 26. Inspection	67244
<input type="checkbox"/> 27. Buffer Zone	67246
<input type="checkbox"/> 28. Tank Inspection	67259
<input type="checkbox"/> 29. Containment	67245
<input type="checkbox"/> 30. Safe Storage	67261
<input type="checkbox"/> 31. Freeboard	67257
<hr/>	
B TRANSPORTER (Title 22)	
<input type="checkbox"/> 32. Applic./Insurance	66428
<input type="checkbox"/> 33. Comp. Cert./CHP Insp.	66448
<input type="checkbox"/> 34. Containers	66465
<hr/>	
<input type="checkbox"/> 35. Vehicles	66465
<input type="checkbox"/> 36. EPA ID #s	66531
<input type="checkbox"/> 37. Correct	66541
<input type="checkbox"/> 38. HW Delivery	66543
<input type="checkbox"/> 39. Records	66544
<hr/>	
<input type="checkbox"/> 40. Name/ Covers	66545
<input type="checkbox"/> 41. Recyclables	66800

Comments:
 all four sidewalls. The sandy soil, which appears to be fill material, is pretty extensive on the south end of excavation, w/ strong odor & stains. One West wall sample was collected at ~ 5 feet bgs in stained soil. Soil sample collected from East wall towards south end, PID reading of this soil was ~ 13ppm. This sample collected from ~ 7' bgs. Soil sample collected from West wall again in more representative area. No apparent odor, but some staining. Sample collected from ~ 7' bgs. One soil sample collected from South wall, in sandy soil, at ~ 7-8' bgs. Soil had slight odor and had green stains. The soil was not too sandy any more and was more clayey/silt/sand. PID gave a reading as high as 200ppm at one point. However, there was no odor or very little odor in most of the bucket & stockpiled soil will be covered. West wall sample will be collected at future date.

[Signature]

lv 6/88
 Contact: Amy Breckenridge, Acutite
 Title: The Project Engineer Inspector: Juliet Shinn
 Signature: [Signature] Signature: [Signature]