



ACCUTITE  
FAX NO.  
(415) 952-7631

Contractor's License #741312

Accutite Environmental Engineering

3050 S. Conkey Avenue, South San Francisco, CA 94080 6407 Tel (415) 952-7631 Fax (415) 952-7631 Leak Testing (415) 952-8327

# FACSIMILE COVER SHEET

TO: Juliet Shin

Company: Alameda County

Fax Number: (570) 569-4757

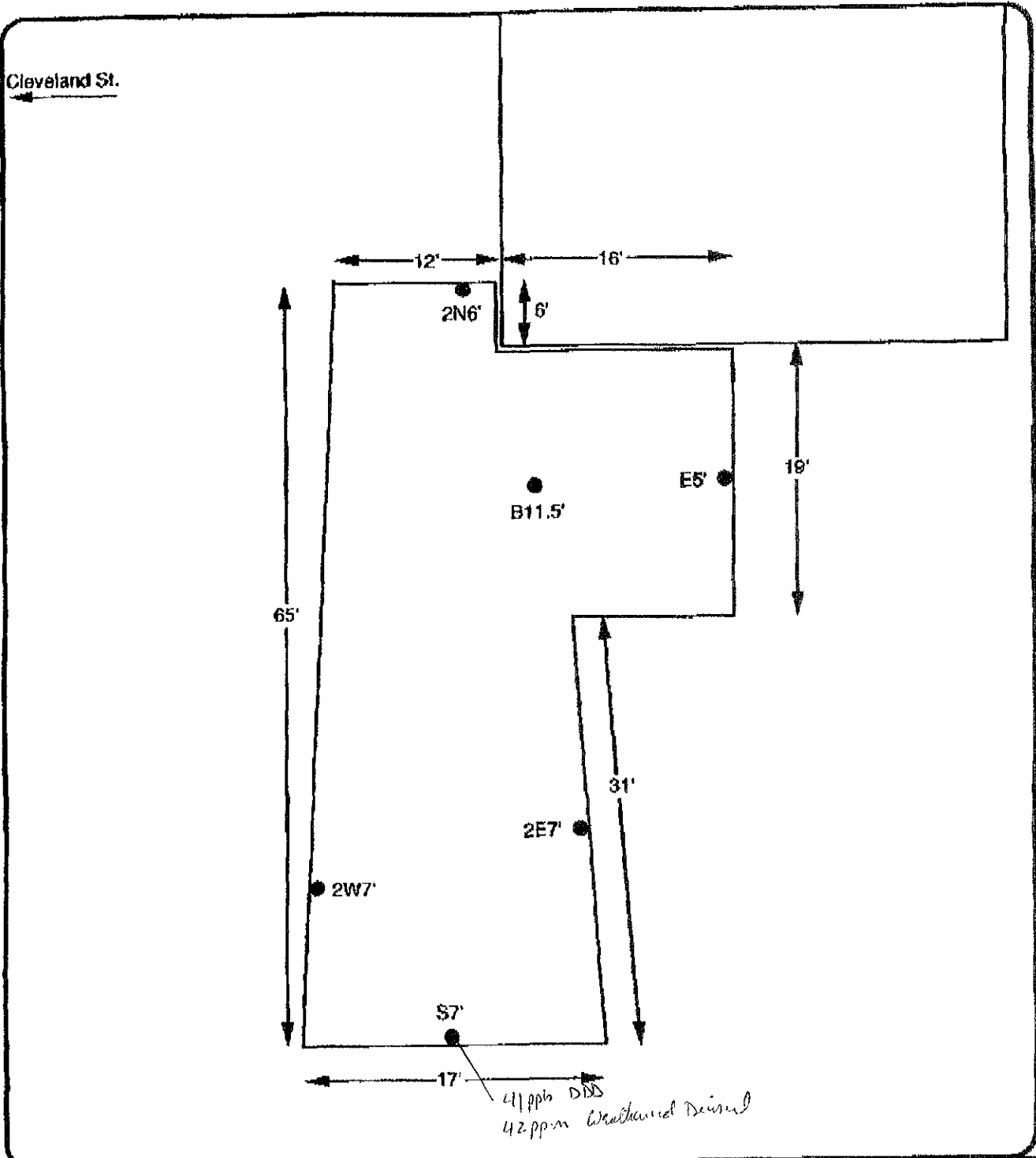
Date: 12/3/94


FROM: Amy Breckenridge

Number of Pages:  
(Including Cover Sheet) 16

Message: Juliet - Please review these  
results from 2 Rentals over excavations.  
And let me know what you think.

Amy



Revisions	Date	Page	Site:	Z Rental 711 Cleveland Street Albany, CA	By: <b>AGCUTTE ENVIRONMENTAL ENGINEERING</b>
	Over Dig	of			
	17 Aug 93				
	15 Feb 94		Key: ● Soil sample location		35 South Linden Avenue South San Francisco California 94080
NORTH		Not to SCALE			
		Fig. 4			



**Sequoia Analytical**

680 Chesapeake Drive Redwood City, CA 94068  
 1905 Bates Avenue, Suite L Concord, CA 94520  
 819 Striker Avenue, Suite B Sacramento, CA 95834

(415) 364-9600  
 (510) 686-9600  
 (916) 921-9600

FAX (415) 364-9288  
 FAX (510) 686-9689  
 FAX (916) 921-0100

Account: 35 South Linden Avenue South San Francisco, CA 94080 Attention: Amy Brackenridge	Client Project ID: Z-Rentals, Albany Sample Matrix: Soil Analysis Method: EPA 3550/8015 First Sample #: 4BC8301	Sampled: Feb 16, 1994 Received: Feb 17, 1994 Reported: Mar 3, 1994
---	--	--

**TOTAL EXTRACTABLE PETROLEUM HYDROCARBONS**

Analyte	Reporting Limit mg/kg	Sample I.D. 4BC8301 E5	Sample I.D. 4BC8302 B11.5	Sample I.D. 4BC8303 2E7	Sample I.D. 4BC8304 2W7	Sample I.D. 4BC8305 87	Sample I.D. 4BC8306 10P2/15/94 (A-D)
Extractable Hydrocarbons	1.0	N.D.	8.4	8.4	N.D.	42	280
Chromatogram Pattern:		--	Weathered Diesel	Weathered Diesel	--	Weathered Diesel	Weathered Diesel

**Quality Control Data**

Report Limit							
Multiplication Factor:	1.0	1.0	1.0	1.0	5.0	1.0	
Date Extracted:	2/24/94	2/24/94	2/24/94	2/24/94	2/24/94	2/24/94	2/24/94
Date Analyzed:	2/25/94	2/25/94	2/25/94	2/25/94	2/25/94	2/25/94	2/25/94
Instrument Identification:	GCHP-5	GCHP-5	GCHP-5	GCHP-5	GCHP-5	GCHP-5	GCHP-5

Extractable Hydrocarbons are quantitated against a trash diesel standard.  
 Analytes reported as N.D. were not detected above the stated reporting limit.

**SEQUOIA ANALYTICAL**

*Suzanne Chin*  
 Suzanne Chin  
 Project Manager

45C8301.ACC <1>





**Sequoia  
Analytical**

680 Chesapeake Drive  
1900 Bates Avenue, Suite L  
819 Sinker Avenue, Suite 8

Redwood City, CA 94063  
Concord, CA 94520  
Sacramento, CA 95834

(415) 364-9600  
(510) 886-9600  
(916) 921-9600

FAX (415) 364-9233  
FAX (510) 886-9689  
FAX (916) 921-0100

Account: 35 South Linden Avenue South San Francisco, CA 94080 Attention: Amy Breckenridge	Client Project ID: Z-Rentals, Albany Sample Matrix: Soil Analysis Method: EPA 3550/8015 First Sample #: 4BC8307	Sampled: Feb 15, 1994 Received: Feb 17, 1994 Reported: Mar 3, 1994
--	--	--

### TOTAL EXTRACTABLE PETROLEUM HYDROCARBONS

Analyte	Reporting Limit mg/kg	Sample I.D.	Sample I.D.
		4BC8307 2SP2/15/84 (A-D)	4BC8308 3SP2/15/84 (A-D)
Extractable Hydrocarbons	1.0	2,000	620
Chromatogram Pattern:		Weathered Diesel	Weathered Diesel

#### Quality Control Data

Report Limit		
Multiplication Factor:	100	50
Date Extracted:	2/24/84	2/24/84
Date Analyzed:	2/25/84	2/25/84
Instrument Identification:	GCHP-8	GCHP-8

Extractable Hydrocarbons are quantitated against a fresh diesel standard.  
Analytes reported as N.D. were not detected above the stated reporting limit.

**SEQUOIA ANALYTICAL**

Suzanne Chin  
Project Manager

4BC8301.ACC <2>





**Sequoia Analytical**

480 Chesapeake Drive Redwood City, CA 94063  
 1900 Bates Avenue, Suite L Concord, CA 94520  
 819 Striker Avenue, Suite B Sacramento, CA 95834

(415) 864-9600  
 (510) 686-9600  
 (916) 921-9600

FAX (415) 864-9233  
 FAX (510) 688-9689  
 FAX (916) 921-0100

Account: 35 South Linden Avenue South San Francisco, CA 94080 Attention: Amy Breckenridge	Client Project ID: Z-Rentals, Albany Sample Matrix: Soil Analysis Method: EPA 5030/8015 Mod./8020 First Sample #: 4BC8301	Sampled: Feb 15, 1994 Received: Feb 17, 1994 Reported: Mar 3, 1994
---	--	--

**TOTAL PURGEABLE PETROLEUM HYDROCARBONS with BTEX DISTINCTION**

Analyte	Reporting Limit mg/kg	Sample I.D. 4BC8301 E5'	Sample I.D. 4BC8302 B11.5'	Sample I.D. 4BC8303 2E7'	Sample I.D. 4BC8304 2W7'	Sample I.D. 4BC8305 S7'	Sample I.D. 4BC8306 18P2/15/94 (A-D)
Purgeable Hydrocarbons	1.0	N.D.	N.D.	N.D.	N.D.	N.D.	1.0
Benzene	0.0050	N.D.	N.D.	N.D.	N.D.	N.D.	N.D.
Toluene	0.0050	N.D.	N.D.	N.D.	N.D.	N.D.	N.D.
Ethyl Benzene	0.0050	N.D.	N.D.	N.D.	N.D.	N.D.	N.D.
Total Xylenes	0.0050	N.D.	N.D.	N.D.	N.D.	N.D.	N.D.
Chromatogram Pattern:	--	--	--	--	--	--	Non-Gas Mix > C8

**Quality Control Data**

Report Limit	1.0	1.0	1.0	1.0	1.0	1.0
Multiplication Factor:						
Date Analyzed:	2/23/94	2/24/94	2/23/94	2/23/94	2/24/94	3/1/94
Instrument Identification:	GCHP-6	GCHP-6	GCHP-6	GCHP-6	GCHP-6	GCHP-6
Surrogate Recovery, %: (QC Limits = 70-130%)	76	93	86	87	82	102

Purgeable Hydrocarbons are quantitated against a fresh gasoline standard.  
 Analytes reported as N.D. were not detected above the stated reporting limit.

**SEQUOIA ANALYTICAL**

*Suzanne Chin*  
 Suzanne Chin  
 Project Manager

4BC8301.ACC <3>





**Sequoia Analytical**

661 Chempeske Drive Redwood City, CA 94063 (415) 564-9600 FAX (415) 864-9288  
 1900 Bates Avenue, Suite L Concord, CA 94320 (510) 686-9600 FAX (510) 686-9689  
 819 Sutter Avenue, Suite B Sacramento, CA 95834 (916) 921-9600 FAX (916) 921-0100

Accufite	Client Project ID: Z-Rentals, Albany	Sampled: Feb 18, 1994
36 South Linden Avenue	Sample Matrix: Soil	Received: Feb 17, 1994
South San Francisco, CA 94080	Analysis Method: EPA 6030/6015 Mod./8020	Reported: Mar 3, 1994
Attention: Amy Brackenridge	First Sample #: 4BC8307	

**TOTAL PURGEABLE PETROLEUM HYDROCARBONS with BTEX DISTINCTION**

Analyte	Reporting Limit mg/kg	Sample I.D. 4BC8307 ZSP2/15/94 (A-D)	Sample I.D. 4BC8308 ZSP2/15/94 (A-D)
Purgeable Hydrocarbons	1.0	220	16
Benzene	0.0050	N.D.	N.D.
Toluene	0.0050	N.D.	0.074
Ethyl Benzene	0.0050	N.D.	0.058
Total Xylenes	0.0050	1.1	0.32

Chromatogram Pattern: Non-Gas Mix > C8 Non-Gas Mix > C8

**Quality Control Data**

Report Limit		
Multiplication Factor:	1.0	1.0
Date Analyzed:	2/28/94	3/1/94
Instrument Identification:	GCHP-7	GCHP-8
Surrogate Recovery, %: (QC Limits = 70-130%)	107	88

Purgeable Hydrocarbons are quantitated against a fresh gasoline standard. Analytes reported as N.D. were not detected above the stated reporting limit.

**SEQUOIA ANALYTICAL**

*Suzanne Chin*  
 Suzanne Chin  
 Project Manager

4BC8301.AOC <4>





**Sequoia Analytical**

680 Chesapeake Drive  
1900 Bates Avenue, Suite L  
819 Striker Avenue, Suite 8

Redwood City, CA 94063  
Concord, CA 94520  
Sacramento, CA 95834

(415) 854-8600  
(510) 686-8600  
(916) 921-9600

FAX (415) 864-9183  
FAX (510) 686-9689  
FAX (916) 921-0100

Accutite	Client Project ID: Z-Rentals, Albany	Sampled: Feb 15, 1994
35 South Linden Avenue	Sample Descript: Soil, E6	Received: Feb 17, 1994
South San Francisco, CA 94080	Analysis Method: EPA 8030/8010	Analyzed: Feb 28, 1994
Attention: Amy Breckenridge	Lab Number: 48C6301	Reported: Mar 3, 1994

**HALOGENATED VOLATILE ORGANICS (EPA 8010)**

Analyte	Detection Limit µg/kg	Sample Results µg/kg
Bromodichloromethane.....	5.0	N.D.
Bromoform.....	5.0	N.D.
Bromomethane.....	10	N.D.
Carbon tetrachloride.....	5.0	N.D.
Chlorobenzene.....	5.0	N.D.
Chloroethane.....	10	N.D.
2-Chloroethylvinyl ether.....	10	N.D.
Chloroform.....	5.0	N.D.
Chloromethane.....	10	N.D.
Dibromochloromethane.....	5.0	N.D.
1,3-Dichlorobenzene.....	5.0	N.D.
1,4-Dichlorobenzene.....	5.0	N.D.
1,2-Dichlorobenzene.....	5.0	N.D.
1,1-Dichloroethane.....	5.0	N.D.
1,2-Dichloroethane.....	5.0	N.D.
1,1-Dichloroethane.....	5.0	N.D.
cis-1,2-Dichloroethane.....	5.0	N.D.
trans-1,2-Dichloroethane.....	5.0	N.D.
1,2-Dichloropropane.....	5.0	N.D.
cis-1,3-Dichloropropene.....	5.0	N.D.
trans-1,3-Dichloropropene.....	5.0	N.D.
Methylene chloride.....	50	N.D.
1,1,2,2-Tetrachloroethane.....	5.0	N.D.
Tetrachloroethene.....	5.0	N.D.
1,1,1-Trichloroethane.....	5.0	N.D.
1,1,2-Trichloroethane.....	5.0	N.D.
Trichloroethene.....	5.0	N.D.
Trichlorofluoromethane.....	5.0	N.D.
Vinyl chloride.....	10	N.D.

Analytes reported as N.D. were not present above the stated limit of detection.

**SEQUOIA ANALYTICAL**

  
Suzanne Chin  
Project Manager

48C6301.ACC <6>





**Sequoia Analytical**

680 Chesapeake Drive Redwood City, CA 94063 (415) 864-9600  
1900 Bates Avenue, Suite L Concord, CA 94520 (510) 886-9600  
819 Striker Avenue, Suite B Sacramento, CA 95834 (916) 921-9600

FAX (415) 864-9333  
FAX (510) 886-9689  
FAX (916) 921-0100

Accutite	Client Project ID: Z-Rentals, Albany	Sampled: Feb 16, 1994
35 South Linden Avenue	Sample Descript: Soil, E5'	Received: Feb 17, 1994
South San Francisco, CA 94080	Analysis Method: EPA 5030/8020	Analyzed: Feb 28, 1994
Attention: Amy Breckenridge	Lab Number: 4BC6301	Reported: Mar 3, 1994

**AROMATIC VOLATILE ORGANICS (EPA 8020)**

Analyte	Detection Limit µg/kg	Sample Results µg/kg
Benzene.....	5.0	N.D.
Chlorobenzene.....	5.0	N.D.
1,3-Dichlorobenzene.....	5.0	N.D.
1,4-Dichlorobenzene.....	5.0	N.D.
1,2-Dichlorobenzene.....	5.0	N.D.
Ethyl Benzene.....	5.0	N.D.
Toluene.....	5.0	N.D.
Xylene.....	5.0	N.D.

Analytes reported as N.D. were not present above the stated limit of detection.

SEQUOIA ANALYTICAL

  
Suzanne Chin  
Project Manager

4BC6301.AOC <e>







**Sequoia  
Analytical**

680 Chesapeake Drive Redwood City, CA 94063 (415) 864-9600 FAX (415) 864-9288  
 1900 Bates Avenue, Suite L Concord, CA 94520 (510) 686-9600 FAX (510) 686-9689  
 819 Striker Avenue, Suite B Sacramento, CA 95834 (916) 921-9600 FAX (916) 921-0100

Account: 35 South Linden Avenue South San Francisco, CA 94080 Attention: Amy Breckenridge	Client Project ID: Z-Rentals, Albany Sample Descript: Soil, B11.5' Analysis Method: EPA 6030/6020 Lab Number: 4BC8302	Sampled: Feb 16, 1994 Received: Feb 17, 1994 Analyzed: Feb 28, 1994 Reported: Mar 3, 1994
---	--	--

**AROMATIC VOLATILE ORGANICS (EPA 8020)**

Analyte	Detection Limit µg/kg	Sample Results µg/kg
Benzene.....	5.0	N.D.
Chlorobenzene.....	5.0	N.D.
1,3-Dichlorobenzene.....	5.0	N.D.
1,4-Dichlorobenzene.....	5.0	N.D.
1,2-Dichlorobenzene.....	5.0	N.D.
Ethyl Benzene.....	5.0	N.D.
Toluene.....	5.0	N.D.
Xylene.....	5.0	N.D.

Analyses reported as N.D. were not present above the stated limit of detection.

**SEQUOIA ANALYTICAL**

Suzanne Chin  
Project Manager

4805301.A00 <7>





**Sequoia Analytical**

880 Chesapeake Drive  
1900 Bates Avenue, Suite 1  
819 Striker Avenue, Suite 8

Redwood City, CA 94065  
Concord, CA 94520  
Sacramento, CA 95834

(415) 564-9800  
(510) 686-9600  
(916) 921-9600

FAX (415) 364-9888  
FAX (510) 686-9689  
FAX (916) 921-0100

Account	Client Project ID: Z-Rentals, Albany	Sampled: Feb 16, 1994
35 South Linden Avenue	Sample Descript: Soil, 2E7	Received: Feb 17, 1994
South San Francisco, CA 94080	Analysis Method: EPA 8030/8020	Analyzed: Feb 28, 1994
Attention: Amy Breckenridge	Lab Number: 4BC6303	Reported: Mar 3, 1994

**AROMATIC VOLATILE ORGANICS (EPA 8020)**

Analyte	Detection Limit µg/kg	Sample Results µg/kg
Benzene.....	5.0	N.D.
Chlorobenzene.....	5.0	N.D.
1,3-Dichlorobenzene.....	5.0	N.D.
1,4-Dichlorobenzene.....	5.0	N.D.
1,2-Dichlorobenzene.....	5.0	N.D.
Ethyl Benzene.....	5.0	N.D.
Toluene.....	5.0	N.D.
Xylene.....	5.0	N.D.

Analytes reported as N.D. were not present above the stated limit of detection.

**SEQUOIA ANALYTICAL**

Suzanne Chin  
Project Manager

4BC9301.ACC <8>





**Sequoia Analytical**

680 Chertapeake Drive Redwood City, CA 94068 (415) 364-9600  
1900 Bates Avenue, Suite L Concord, CA 94520 (510) 686-9600  
819 Striker Avenue, Suite # Sacramento, CA 95834 (916) 921-9600

FAX (415) 864-9233  
FAX (510) 686-9689  
FAX (916) 821-0100

Accutite	Client Project ID: Z-Rentals, Albany	Sampled: Feb 15, 1994
36 South Linden Avenue	Sample Descript: Soil, 2W7'	Received: Feb 17, 1994
South San Francisco, CA 94080	Analysis Method: EPA 8030/8020	Analyzed: Feb 26, 1994
Attention: Amy Breckenridge	Lab Number: 4BC6304	Reported: Mar 3, 1994

**AROMATIC VOLATILE ORGANICS (EPA 8020)**

Analyte	Detection Limit µg/kg	Sample Results µg/kg
Benzene.....	5.0	N.D.
Chlorobenzene.....	5.0	N.D.
1,3-Dichlorobenzene.....	5.0	N.D.
1,4-Dichlorobenzene.....	5.0	N.D.
1,2-Dichlorobenzene.....	5.0	N.D.
Ethyl Benzene.....	5.0	N.D.
Toluene.....	5.0	N.D.
Xylene.....	5.0	N.D.

Analytes reported as N.D. were not present above the stated limit of detection.

**SEQUOIA ANALYTICAL**

Suzanne Chin  
Project Manager

4BC6301.AGC <9>



SENT BY: XEROX Telecopier 7017; 3-3-94 ; 1:26PM ;

4158848233

852 7891:011



**Sequoia Analytical**

680 Chesapeake Drive  
1900 Bates Avenue, Suite L  
819 Striker Avenue, Suite 8

Redwood City, CA 94063  
Concord, CA 94520  
Sacramento, CA 95834

(415) 864-9600  
(510) 686-9600  
(916) 921-9800

FAX (415) 864-9339  
FAX (510) 686-9689  
FAX (916) 921-0100

Accutite	Client Project ID: Z-Rentale, Albany	Sampled: Feb 16, 1994
35 South Linden Avenue	Sample Descript: Soil, S7	Received: Feb 17, 1994
South San Francisco, CA 94080	Analyte Method: EPA 8030/8020	Analyzed: Feb 28, 1994
Attention: Amy Brockenridge	Lab Number: 4BC6305	Reported: Mar 3, 1994

**AROMATIC VOLATILE ORGANICS (EPA 8020)**

Analyte	Detection Limit µg/kg	Sample Results µg/kg
Benzene.....	5.0	N.D.
Chlorobenzene.....	5.0	N.D.
1,3-Dichlorobenzene.....	5.0	N.D.
1,4-Dichlorobenzene.....	5.0	N.D.
1,2-Dichlorobenzene.....	5.0	N.D.
Ethyl Benzene.....	5.0	N.D.
Toluene.....	5.0	N.D.
Xylene.....	5.0	N.D.

Analytes reported as N.D. were not present above the stated limit of detection.

SEQUOIA ANALYTICAL

Suzanne Chin  
Project Manager

4BC6301.ACC <10>





**Sequoia Analytical**

680 Chesapeake Drive Redwood City, CA 94063 (415) 864-9500  
 1900 Batar Avenue, Suite L Concord, CA 94520 (916) 686-9600  
 819 Striker Avenue, Suite B Sacramento, CA 95834 (916) 921-9600

FAX (415) 864-9388  
 FAX (916) 686-9689  
 FAX (916) 921-0100

Accutite	Client Project ID: Z-Rentals, Albany	Sampled: Feb 16, 1994
35 South Linden Avenue	Sample Descript: Soil, E8'	Received: Feb 17, 1994
South San Francisco, CA 94080	Analysis Method: EPA 8080	Extracted: Feb 24, 1994
Attention: Amy Breckenridge	Lab Number: 4BC8301	Analyzed: Feb 24, 1994
		Reported: Mar 3, 1994

**ORGANOCHLORINE PESTICIDES AND PCB'S (EPA 8080)**

Analyte	Detection Limit µg/kg	Sample Results µg/kg
Aldrin.....	1.0	N.D.
alpha-BHC.....	1.0	N.D.
beta-BHC.....	1.0	N.D.
delta-BHC.....	1.0	N.D.
gamma-BHC (Lindane).....	1.0	N.D.
Chlordane.....	20	N.D.
4,4'-DDD.....	5.0	N.D.
4,4'-DDE.....	2.0	N.D.
4,4'-DDT.....	6.0	N.D.
Dieldrin.....	2.0	N.D.
Endosulfan I.....	2.0	N.D.
Endosulfan II.....	2.0	N.D.
Endosulfan sulfate.....	5.0	N.D.
Endrin.....	2.0	N.D.
Endrin aldehyde.....	5.0	N.D.
Heptachlor.....	1.0	N.D.
Heptachlor epoxide.....	1.0	N.D.
Methoxychlor.....	20	N.D.
Toxaphene.....	50	N.D.
PCB-1016.....	20	N.D.
PCB-1221.....	50	N.D.
PCB-1232.....	20	N.D.
PCB-1242.....	20	N.D.
PCB-1248.....	20	N.D.
PCB-1254.....	20	N.D.
PCB-1260.....	20	N.D.

Analytes reported as N.D. were not present above the stated limit of detection.

SEQUOIA ANALYTICAL

Suzanne Chin  
 Project Manager

4BC8301.ACC <11>





**Sequoia Analytical**

680 Chesapeake Drive Redwood City, CA 94063 (415) 864-9600  
 1900 Bates Avenue, Suite L Concord, CA 94320 (910) 686-9600  
 819 Striker Avenue, Suite B Sacramento, CA 95834 (916) 921-9600

FAX (415) 864-9233  
 FAX (910) 686-9699  
 FAX (916) 921-0100

Account: 35 South Linden Avenue South San Francisco, CA 94080 Attention: Amy Breckenridge	Client Project ID: Z-Rentals, Albany Sample Descript: Soil, B11.6' Analysis Method: EPA 8080 Lab Number: 48C6302	Sampled: Feb 15, 1994 Received: Feb 17, 1994 Extracted: Feb 24, 1994 Analyzed: Feb 24, 1994 Reported: Mar 9, 1994
---	---	---

**ORGANOCHLORINE PESTICIDES AND PCB'S (EPA 8080)**

Analyte	Detection Limit µg/kg	Sample Results µg/kg
Aldrin.....	1.0	N.D.
alpha-BHC.....	1.0	N.D.
beta-BHC.....	1.0	N.D.
delta-BHC.....	1.0	N.D.
gamma-BHC (Lindane).....	1.0	N.D.
Chlordane.....	20	N.D.
4,4'-DDD.....	6.0	N.D.
4,4'-DDE.....	2.0	N.D.
4,4'-DDT.....	6.0	N.D.
Dieldrin.....	2.0	N.D.
Endosulfan I.....	2.0	N.D.
Endosulfan II.....	2.0	N.D.
Endosulfan sulfate.....	6.0	N.D.
Endrin.....	2.0	N.D.
Endrin aldehyde.....	6.0	N.D.
Heptachlor.....	1.0	N.D.
Heptachlor epoxide.....	1.0	N.D.
Methoxychlor.....	20	N.D.
Toxaphene.....	80	N.D.
PCB-1018.....	20	N.D.
PCB-1221.....	80	N.D.
PCB-1239.....	20	N.D.
PCB-1242.....	20	N.D.
PCB-1248.....	20	N.D.
PCB-1254.....	20	N.D.
PCB-1260.....	20	N.D.

Analytes reported as N.D. were not present above the stated limit of detection.

SEQUOIA ANALYTICAL

  
 Suzanne Chin  
 Project Manager

4808201.ACC <18>





**Sequoia Analytical**

680 Chesapeake Drive  
1900 Bates Avenue, Suite L  
819 Striker Avenue, Suite B

Redwood City, CA 94063  
Concord, CA 94920  
Sacramento, CA 95834

(415) 364-9600  
(510) 686-9600  
(916) 921-9600

FAX (415) 364-9233  
FAX (510) 686-9689  
FAX (916) 921-0100

Accutite 35 South Linden Avenue South San Francisco, CA 94080 Attention: Amy Breakenridge	Client Project ID: Z-Rentals, Albany Sample Descript: Soil, 2E7 Analysis Method: EPA 8080 Lab Number: 4BC6303	Sampled: Feb 16, 1994 Received: Feb 17, 1994 Extracted: Feb 24, 1994 Analyzed: Feb 24, 1994 Reported: Mar 8, 1994
--	--	---

**ORGANOCHLORINE PESTICIDES AND PCB'S (EPA 8080)**

Analyte	Detection Limit µg/kg	Sample Results µg/kg
Aldrin.....	1.0	N.D.
alpha-BHC.....	1.0	N.D.
beta-BHC.....	1.0	N.D.
delta-BHC.....	1.0	N.D.
gamma-BHC (Lindane).....	1.0	N.D.
Chlordane.....	20	N.D.
4,4'-DDD.....	6.0	N.D.
4,4'-DDE.....	2.0	N.D.
4,4'-DDT.....	6.0	N.D.
Dieldrin.....	2.0	N.D.
Endosulfan I.....	2.0	N.D.
Endosulfan II.....	2.0	N.D.
Endosulfan sulfate.....	6.0	N.D.
Endrin.....	2.0	N.D.
Endrin aldehyde.....	6.0	N.D.
Heptachlor.....	1.0	N.D.
Heptachlor epoxide.....	1.0	N.D.
Methoxychlor.....	20	N.D.
Toxaphene.....	60	N.D.
PCB-1016.....	20	N.D.
PCB-1221.....	60	N.D.
PCB-1232.....	20	N.D.
PCB-1242.....	20	N.D.
PCB-1248.....	20	N.D.
PCB-1254.....	20	N.D.
PCB-1260.....	20	N.D.

Analytes reported as N.D. were not present above the stated limits of detection.

**SEQUOIA ANALYTICAL**

  
Suzanne Chin  
Project Manager

4BC6301.ADC <13>



SENT BY: XEROX Telecopier 7017; 3- 3-94 ; 1:29PM ;

4159648283-

952 7631#15



**Sequoia Analytical**

690 Chesapeake Drive  
1900 Bates Avenue, Suite L  
819 Striker Avenue, Suite B

Redwood City, CA 94068  
Concord, CA 94520  
Sacramento, CA 95834

(415) 864-9600  
(310) 686-9600  
(916) 921-9600

FAX (415) 864-9283  
FAX (310) 686-5689  
FAX (916) 921-0100

Accutite 35 South Linden Avenue South San Francisco, CA 94080 Attention: Amy Breckenridge	Client Project ID: Z-Rentals, Albany Sample Descript: Soil, S7 Analyals Method: EPA 8080 Lab Number: 4BC0305	Sampled: Feb 15, 1994 Received: Feb 17, 1994 Extracted: Feb 24, 1994 Analyzed: Feb 24, 1994 Reported: Mar 3, 1994
--	---	---

**ORGANOCHLORINE PESTICIDES AND PCB'S (EPA 8080)**

Analyte	Detection Limit µg/kg	Sample Results µg/kg
Aldrin.....	5.0	N.D.
alpha-BHC.....	5.0	N.D.
beta-BHC.....	5.0	N.D.
delta-BHC.....	5.0	N.D.
gamma-BHC (Lindane).....	5.0	N.D.
Chlordane.....	100	N.D.
<del>4,4'-DDE.....</del>	<del>10</del>	<del>N.D.</del>
4,4'-DDE.....	10	N.D.
4,4'-DDT.....	30	N.D.
Dieldrin.....	10	N.D.
Endosulfan I.....	10	N.D.
Endosulfan II.....	10	N.D.
Endosulfan sulfate.....	30	N.D.
Erdrin.....	10	N.D.
Erdrin aldehyde.....	30	N.D.
Heptachlor.....	5.0	N.D.
Heptachlor epoxide.....	5.0	N.D.
Methoxychlor.....	100	N.D.
Toxaphene.....	400	N.D.
PCB-1016.....	100	N.D.
PCB-1221.....	400	N.D.
PCB-1232.....	100	N.D.
PCB-1242.....	100	N.D.
PCB-1248.....	100	N.D.
PCB-1254.....	100	N.D.
PCB-1260.....	100	N.D.

*4/2 ppb*

Analytes reported as N.D. were not present above the stated limit of detection. Because matrix effects and/or other factors required additional sample dilution, detection limits for this sample have been raised.

**SEQUOIA ANALYTICAL**

Suzanna Chin  
Project Manager

4BC0301.ACC 4/14







**Sequoia  
Analytical**

680 Cheespeake Drive Redwood City, CA 94063 (415) 864-9600  
1900 Bates Avenue, Suite L Concord, CA 94520 (310) 486-9600  
819 Striker Avenue, Suite 8 Sacramento, CA 95834 (916) 921-9600

FAX (415) 864-9233  
FAX (310) 486-9689  
FAX (916) 921-0100

Account:	Client Project ID: Z-Rentals, Albany	Sampled: Feb 16, 1994
95 South Linden Avenue	Sample Descript: Soil, E5	Received: Feb 17, 1994
South San Francisco, CA 94080	Lab Number: 4BC6301	Analyzed: see below
Attention: Amy Brackenridge		Reported: Mar 3, 1994

**LABORATORY ANALYSIS**

Analyte	Date Analyzed	Detection Limit mg/kg	Sample Result mg/kg
Lead.....	2/24/94	5.0	N.D.

Analytes reported as N.D. were not present above the stated limit of detection.

**SEQUOIA ANALYTICAL**

Suzanne Chin  
Project Manager

4BC6301.ACC <16>

