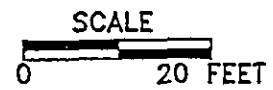



LEGEND

4E x SOIL SAMPLE



DEPTH TO GROUND WATER: 30 FEET

 <small>A GILSON COMPANY</small>	Environmental Science & Engineering, Inc.	
	ALAMEDA COUNTY GSA SANTA RITA CORRECTIONAL FACILITY	
FIGURE 3 TANK PLAN TANK NOS. 2942-4, 2942-4A, 2942-4B		
DRAWN BY DWR	APPROVED BY	REVISED
DATE 6/92	FILE NAME 53482003	PROJ. NO. 6-92-5348

TOG concentrations
 TPH-D concentrations
 (ppm)

4th STREET

MADIGAN AVENUE

Sample 4BE @ 14' BGS
 5,100 PPM Tph/D
 5,300 PPM TOG

B1
 TD 25'

ND

Sample 4AE @ 14' BGS
 600 PPM Tph/D
 1,200 PPM TOG

B4
 TD 25'

Sample 4W @ 14' BGS
 15,000 PPM Tph/D
 5,000 PPM TOG

B2
 TD 40'

ND

B3
 TD 40'

EXISTING
 EXCAVATION

CONCRETE BOILER
 PAD

Estimated
 Groundwater
 Flow Direction

LEGEND

- Approximate Limits of Excavation
- Previous Soil Boring Locations
- Soil Boring
- ⊕ Hydropunch Groundwater Sample
- TD Total Boring Depth, Feet Below Ground Surface (BGS)



NOTE:

ALL DIMENSIONS AND LOCATIONS
 ARE APPROXIMATE



SITE
 MAP

Ref. Map Adopted from ESK Site Map

County of Alameda - G.S.A.
 Santa Rita Site
 4th & Madigan
 Dublin, California

August 1995
 Versar Project:
 2241-014



FIGURE

2

SOIL BORING LOCATIONS

- move borings closer in to pit
 - consolidate number of borings

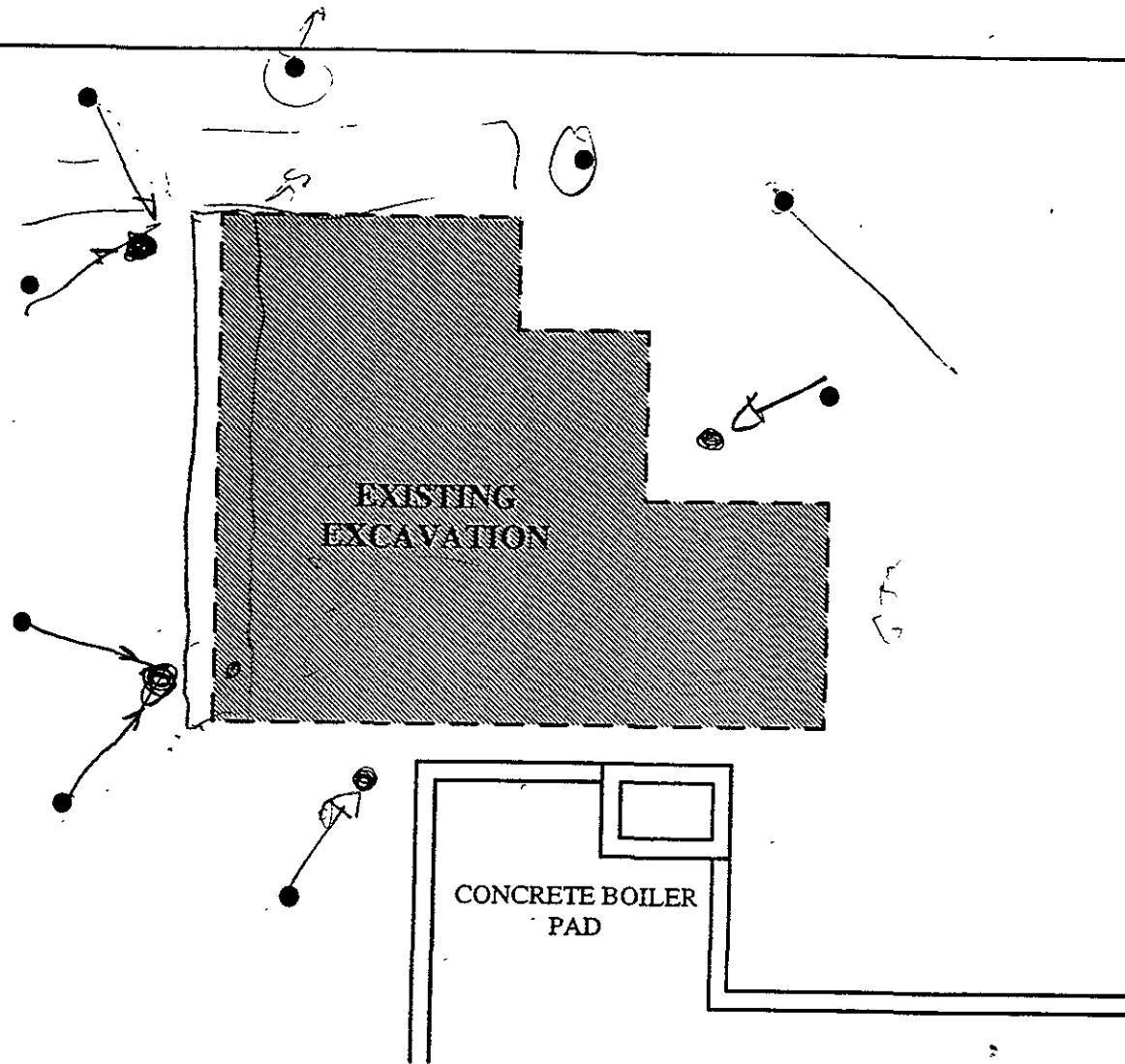
LEGEND

— Approximate Limits of Excavation

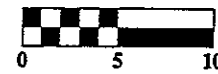
● Proposed Soil Boring Locations

NOTE:

ALL DIMENSIONS AND LOCATIONS ARE APPROXIMATE



SCALE



PROPOSED SOIL BORING LOCATION MAP

Ref: Map Adopted from ESE Site Map

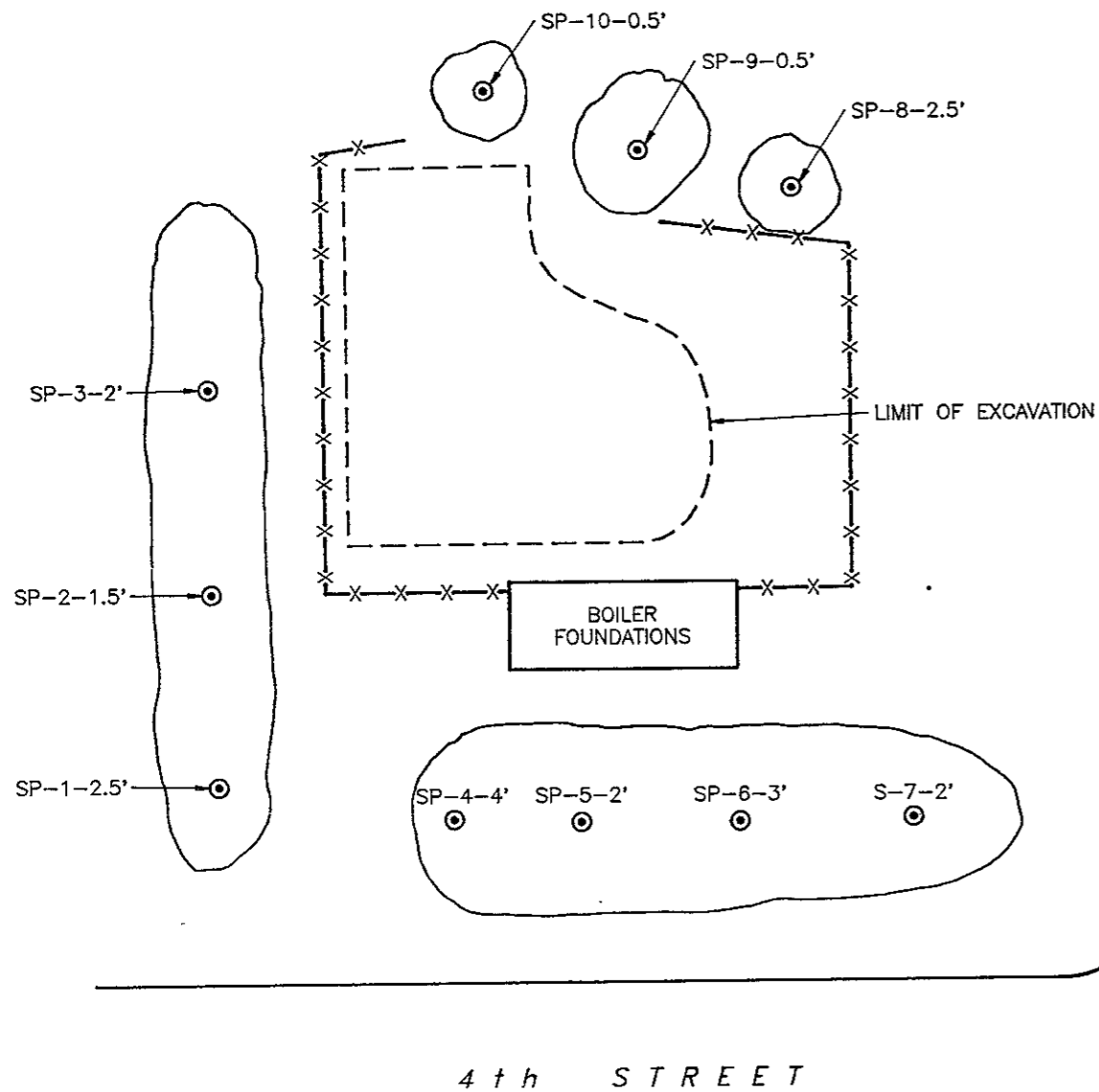
County of Alameda - G.S.A.
 Santa Rita Site
 4th & Madigan
 Dublin, California

August 1994
 Versar Project:
 2241-014



FIGURE 3

FIGGRAPHIC2241-14S.DRW




LEGEND

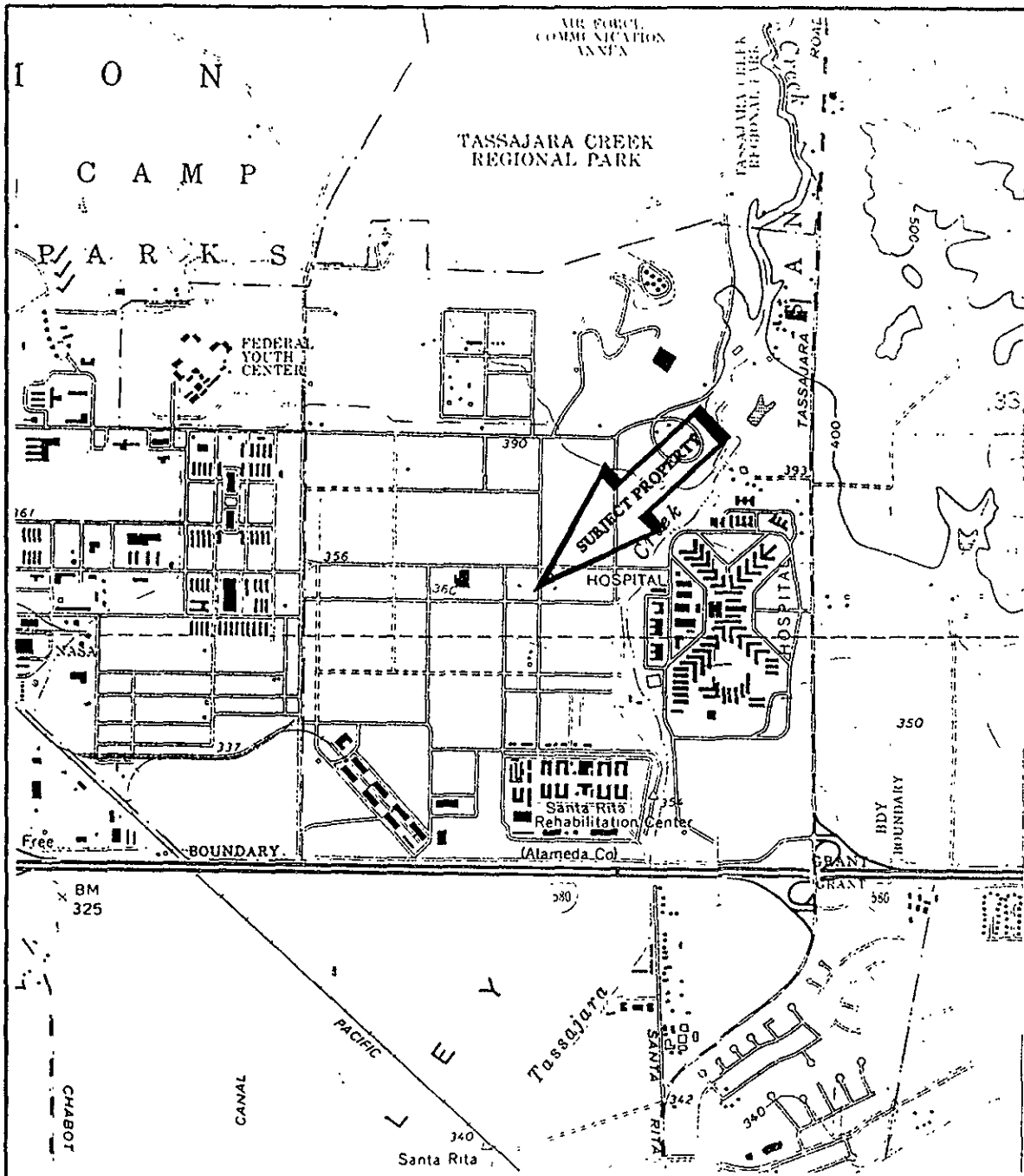
—X— PORTABLE FENCING

⊙ PROPOSED SOIL SAMPLE LOCATION WITH SAMPLE NUMBER AND DEPTH

* NOTE: MAXIMUM HEIGHT OF STOCKPILE IS FOUR FEET.



	DATE 11/93	SOIL STOCKPILE SAMPLE LOCATIONS <i>Alameda County GSA</i>	FIGURE NO 3
	4090 NELSON AVENUE, SUITE J CONCORD, CA 94520		CAD FILE 50771009



Versar INC.
ENVIRONMENTAL RISK MANAGEMENT

NOTE: Base map from USGS Dublin, California and Livermore, California Quadrangles, 7.5 minute series (Topographic) 1961. Photorevised 1980.

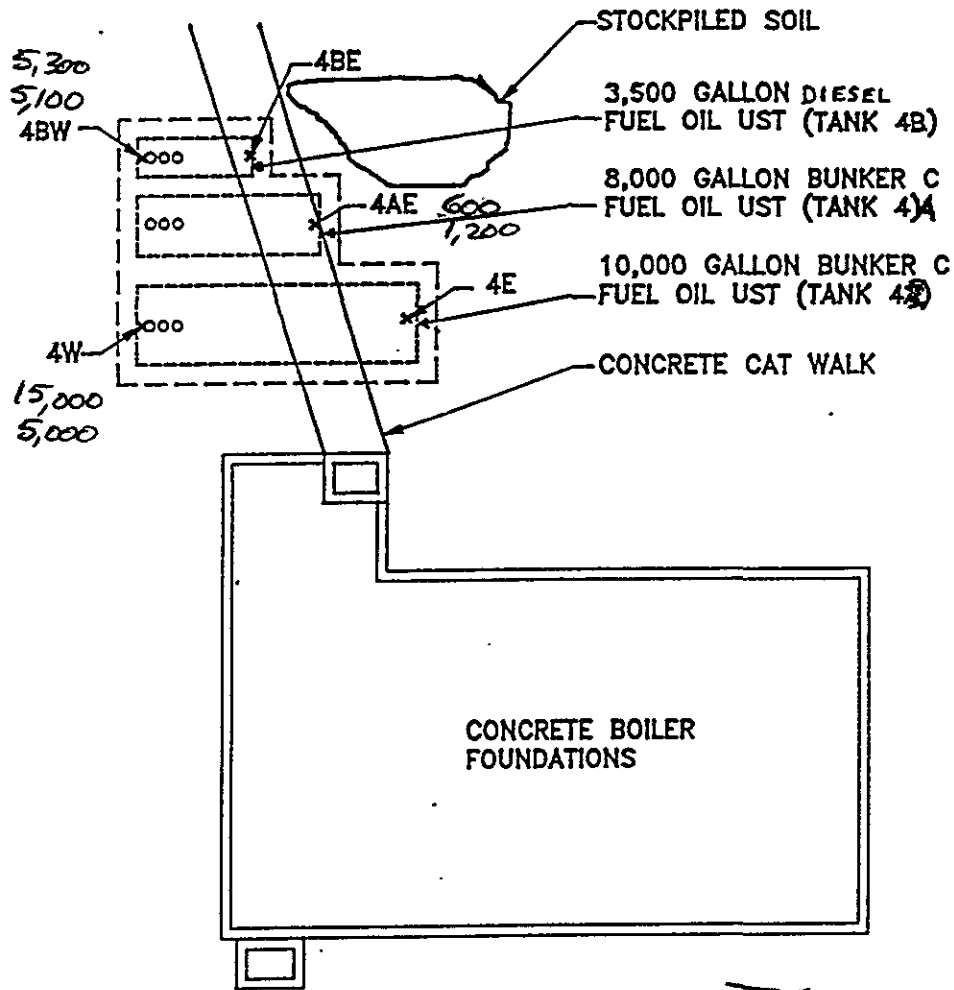


**SITE
LOCATION
MAP**

County of Alameda - G.S.A.
Santa Rita Site
4th & Madigan
Dublin, California

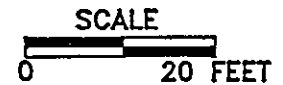
January 1994
Versar Project:
2241-014
F:GRAPHIC\2241-14F

**FIGURE
1**
Not To Scale



LEGEND

4E_x SOIL SAMPLE



DEPTH TO GROUND WATER: 30 FEET


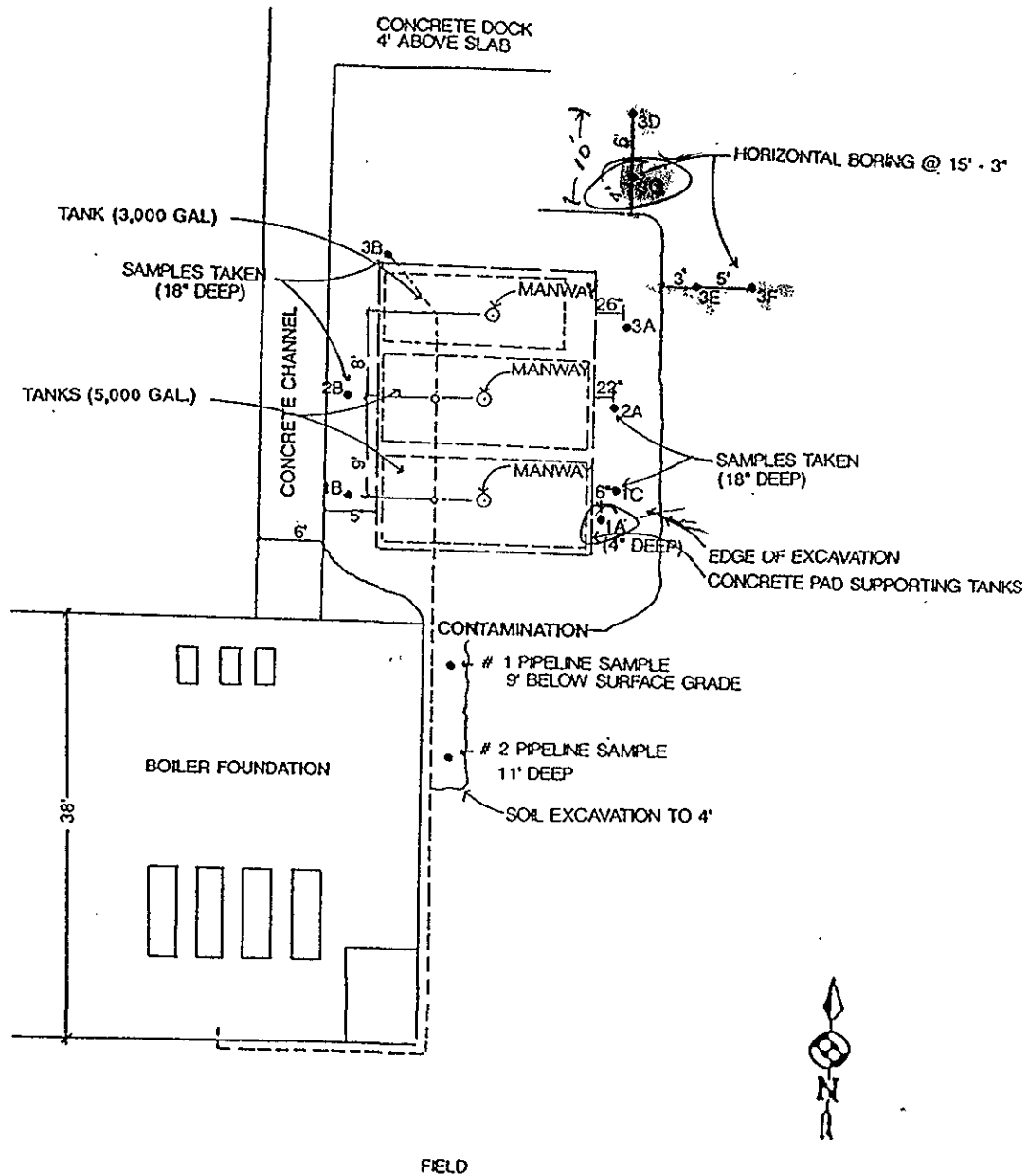
 <small>A CIRCOR COMPANY</small>	Environmental Science & Engineering, Inc.	
	ALAMEDA COUNTY GSA SANTA RITA CORRECTIONAL FACILITY	

FIGURE 3
TANK PLAN
TANK NOS. 2942-4, 2942-4A, 2942-4B

DRAWN BY DWR	APPROVED BY	REVISED
-----------------	-------------	---------

DATE 6/92	FILE NAME 53482003	PROJ. NO. 6-92-5348
--------------	-----------------------	------------------------

UST closure sample locations



**A HUNTER ENVIRONMENTAL
SERVICES, INC. COMPANY**

GREGG & ASSOCIATES, INC.
597 Center Avenue, Suite 350
Martinez, California 94553
(415) 372-3637

**Figure 2942-2
SAMPLING LOCATIONS FOR TANKS 2942-1, 2 & 3
AT SANTA RITA REHABILITATION CENTER**