

MOBILE CHEM LABS INC.

733 Dartmouth Avenue
San Carlos, CA 94070 • (415) 591-5820

STOCK PILE
Samples

2/8/89

STATE OF CALIFORNIA
DEPT. OF ENVIRONMENTAL HEALTH
HAZARDOUS MATERIALS

Shell Oil Company
P.O. BOX 4023
Concord, CA 94524
Attn: Ray Newsome

Date Sampled: 03-06-89
Date Received: 03-06-89
Date Reported: 03-06-89

Sample Number

V039001

Sample Description

011-008-Castro Valley
2724 Castro Valley Blvd.
#1A-D SOIL

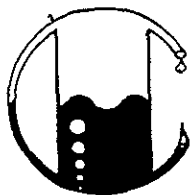
ANALYSIS

	<u>Detection Limit</u>	<u>Sample Results</u>
	ppm	ppm
Total Petroleum Hydrocarbons as Gasoline	1.0	<1.0
Benzene	0.1	<0.1
Toluene	0.1	<0.1
Xylenes	0.1	<0.1
Ethylbenzene	0.1	<0.1

Note: Analysis was performed using EPA methods 5020 and 8015 with method 8020 used for BTX distinction.

MOBILE CHEM LABS

Ronald G. Evans
Lab Director



MOBILE CHEM LABS INC.

733 Dartmouth Avenue
San Carlos, CA 94070 • (415) 591-5820

Shell Oil Company
P.O. BOX 4023
Concord, CA 94524
Attn: Ray Newsome

Date Sampled: 03-06-89
Date Received: 03-06-89
Date Reported: 03-06-89

Sample Number

V039002

Sample Description

011-008-Castro Valley
2724 Castro Valley Blvd.
#2A-D SOIL

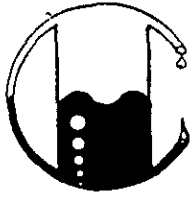
ANALYSIS

	Detection Limit	Sample Results
	----- ppm	----- ppm
Total Petroleum Hydrocarbons as Gasoline	1.0	1.3
Benzene	0.1	<0.1
Toluene	0.1	0.2
Xylenes	0.1	0.3
Ethylbenzene	0.1	<0.1

Note: Analysis was performed using EPA methods 5020 and 8015 with
method 8020 used for BTX distinction.

MOBILE CHEM LABS

Ronald G. Evans
Lab Director



MOBILE CHEM LABS INC.

733 Dartmouth Avenue
San Carlos, CA 94070 • (415) 591-5820

Shell Oil Company
P.O. BOX 4023
Concord, CA 94524
Attn: Ray Newsome

Date Sampled: 03-06-89
Date Received: 03-06-89
Date Reported: 03-06-89

Sample Number

V039003

Sample Description

011-008-Castro Valley
2724 Castro Valley Blvd.
#3A-D SOIL

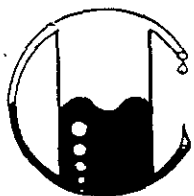
ANALYSIS

	Detection Limit	Sample Results
	----- ppm	----- ppm
Total Petroleum Hydrocarbons as Gasoline	1.0	<1.0
Benzene	0.1	<0.1
Toluene	0.1	<0.1
Xylenes	0.1	<0.1
Ethylbenzene	0.1	<0.1

Note: Analysis was performed using EPA methods 5020 and 8015 with method 8020 used for BTX distinction.

MOBILE CHEM LABS


Ronald G. Evans
Lab Director



MOBILE CHEM LABS INC.

733 Dartmouth Avenue
San Carlos, CA 94070 • (415) 591-5820

Shell Oil Company
P.O. BOX 4023
Concord, CA 94524
Attn: Ray Newsome

Date Sampled: 03-06-89
Date Received: 03-06-89
Date Reported: 03-06-89

Sample Number

V039004

Sample Description

011-008-Castro Valley
2724 Castro Valley Blvd.
#4A-D SOIL

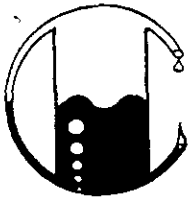
ANALYSIS

	Detection Limit	Sample Results
	----- ppm	----- ppm
Total Petroleum Hydrocarbons as Gasoline	1.0	2.5
Benzene	0.1	<0.1
Toluene	0.1	<0.1
Xylenes	0.1	<0.1
Ethylbenzene	0.1	<0.1 -

Note: Analysis was performed using EPA methods 5020 and 8015 with method 8020 used for BTX distinction.

MOBILE CHEM LABS

Ronald G. Evans
Lab Director



MOBILE CHEM LABS INC.

733 Dartmouth Avenue
San Carlos, CA 94070 • (415) 591-5820

Shell Oil Company
P.O. BOX 4023
Concord, CA 94524
Attn: Ray Newsome

Date Sampled: 03-06-89
Date Received: 03-06-89
Date Reported: 03-06-89

Sample Number

V039005

Sample Description

011-008-Castro Valley
2724 Castro Valey Blvd.
#5A-D SOIL

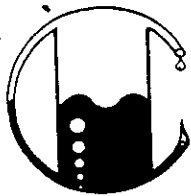
ANALYSIS

	Detection Limit ----- ppm	Sample Results ----- ppm
Total Petroleum Hydrocarbons as Gasoline	1.0	40
Benzene	0.1	0.2
Toluene	0.1	0.1
Xylenes	0.1	1.6
Ethylbenzene	0.1	0.8

Note: Analysis was performed using EPA methods 5020 and 8015 with
method 8020 used for BTX distinction.

MOBILE CHEM LABS

Ronald G. Evans
Lab Director



MOBILE CHEM LABS INC.

733 Dartmouth Avenue
San Carlos, CA 94070 • (415) 591-5820

Shell Oil Company
P.O. BOX 4023
Concord, CA 94524
Attn: Ray Newsome

Date Sampled: 03-06-89
Date Received: 03-06-89
Date Reported: 03-06-89

Sample Number

V039006

Sample Description

011-008-Castro Valley
2724 Castro Valey Blvd.
#6A-D SOIL

ANALYSIS

	Detection Limit	Sample Results
	ppm	ppm
Total Petroleum Hydrocarbons as Gasoline	1.0	2.6
Benzene	0.1	<0.1
Toluene	0.1	<0.1
Xylenes	0.1	<0.1
Ethylbenzene	0.1	<0.1

Note: Analysis was performed using EPA methods 5020 and 8015 with method 8020 used for BTX distinction.

MOBILE CHEM LABS


Ronald G. Evans
Lab Director