

SITE SAFETY PLAN
TANK PROTECT ENGINEERING OF NORTHERN CALIFORNIA, INC.

Site: Castro Valley High School
19400 Santa Maria Avenue
Castro Valley, CA 94546

Project Number: 275

Original Site Safety Plan: Yes (X) No ()
Plan Prepared by Tank Protect Engineering
Plan Approved by Marc Zomorodi

Revision Number:
Date: 7/15/93
Date: 7/15/93

Please respond to each item as completely as possible. Where an item is not applicable, please mark "N/A".

1. KEY PERSONNEL AND RESPONSIBILITIES

(Include name, telephone number and health and safety responsibilities; i.e., project manager - Joe Smith - responsible for supervision of all site activities.)

Project Manager:	Louis Travis,	(510) 429-8088
Site Safety Manager:	Louis Travis,	(510) 429-8088
Alternate Site Safety Manager:		
Field Team Members:	Louis Travis,	(510) 429-8088
	Rick Martin	(510) 429-8088

Agency Reps: [Please specify by one of the following symbols: **Federal:** (F), **State:** (S), **Local:** (L), **Contractor(s):** (C)]

(L) Alameda County Health Care Services Agency (510) 271-4320
(L) Eden Consolidated Fire Protection District (510) 670-5853

TPE SITE SAFETY PLAN

2. JOB HAZARD ANALYSIS

2.1 OVERALL HAZARD EVALUATION

Hazard Level: High () Moderate (X) Low () Unknown ()
Hazard Type: Liquid () Solid () Sludge () Vapor/Gas (X)

Known or suspected hazardous materials present on site

See below: 1 - Gasoline vapors contain benzene, toluene, xylenes, ethylbenzene; 2 - Diesel; 3 - Waste oil

Characteristics of hazardous materials included above (complete for each chemical presents):

MATERIAL #1

Corrosive ()	Ignitable (X)	Toxic (X)	Reactive ()
Volatile (X)	Radioactive ()	Biological Agent ()	
Exposure Routes:	Inhalation (X)	Ingestion ()	Contact (X)
		Skin & Mucous Membrane	

MATERIAL #2

Corrosive ()	Ignitable (X)	Toxic (X)	Reactive ()
Semi-Volatile (X)	Radioactive ()	Biological Agent ()	
Exposure Routes:	Inhalation (X)	Ingestion ()	Contact (X)

MATERIAL #3

Corrosive ()	Ignitable (X)	Toxic (X)	Reactive ()
Volatile ()	Radioactive ()	Biological Agent ()	
Exposure Routes:	Inhalation ()	Ingestion ()	Contact (X)

MATERIAL #4

Corrosive ()	Ignitable ()	Toxic ()	Reactive ()
Volatile ()	Radioactive ()	Biological Agent ()	
Exposure Routes:	Inhalation ()	Ingestion ()	Contact ()

TPE SITE SAFETY PLAN

2.2 JOB-SPECIFIC HAZARDS

For each labor category specify the possible hazards based on information available (i.e., Task-driller, Hazards-trauma from drill rig accidents, etc.) For each hazard, indicate steps to be taken to minimize the hazard.

Task - Tank Removal; Hazard - Gasoline Vapor Explosion: To minimize - use 15 lb of dry ice per each 1,000 gallon capacity to inert vapor present in tank.

The following additional hazards are expected on site (i.e., snake infested area, extreme heat, etc.): N/A

Measures to minimize the effects of the additional hazards are:
N/A

3. MONITORING PLAN

3.1 (a) Air Monitoring Plan

Action levels for implementation of air monitoring. Action levels should be based on published data available on contaminants of concern. Action levels should be set by persons experienced in industrial hygiene.

Level (i.e.,.5 ppm)	Action Taken (i.e., commence perimeter monitoring)
5 ppm	Cease work and commence perimeter monitoring until contamination disperses.

(b) Air Monitoring Equipment

Outline the specific equipment to be used, calibration method, frequency of monitoring, locations to be monitored, and analysis of samples (if applicable).

TPE SITE SAFETY PLAN

Air monitoring will be done by using Gastech Model 1314. Hexane will be used for calibration of Gastech.

If air monitoring is not to be implemented for this site, explain why: N/A

3.2 Personnel Monitoring

(Include hierarchy of responsibilities decision making on the site)

Safety officer advises field manager who delegates responsibilities to individual team workers.

3.3 Sampling Monitoring

- (a) Techniques used for sampling: **Insert a probe inside the tank to determine LEL and oxygen levels.**
- (b) Equipments used for sampling: **Gastech Model 1314**
 - 1 - Hydrocarbon Super Surveyor**
 - 2 - Brass Sleeve and Sampler With Hammer**
- (c) Maintenance and calibration of equipments: **Use hexane for calibration. Equipment will be calibrated prior to operation.**

4. PERSONAL PROTECTIVE EQUIPMENT (PPE)

Equipment used by employees for the site tasks and operations being conducted. Be Specific (i.e., hard hat, impact resistance goggles, other protective glove, etc.).

Hard hat, protective gloves (petroleum resistant), safety glasses or goggles, respirator (with organic vapor filter) for site emergency personnel.

TPE SITE SAFETY PLAN

5. SITE CONTROL AND SECURITY MEASURES

The following general work zone security guidelines should be implemented:

- Work zone shall be barricaded and caution tape used.
- Excavations shall be closed or perimeter shall be barricaded when drilling and sampling activities are not actually taking place.
- No excavations shall be left unattended without perimeter barricaded. Visitors will not enter the work zone unless they have attended a project safety briefing.
- Persons will not leave the work zone without first passing through the decontamination zone.

6. DECONTAMINATION PROCEDURE

List the procedures and specific steps to be taken to decontaminate equipment and PPE. **Wash with tri-sodium phosphate solution and rinse with clean potable water.**

7. TRAINING REQUIREMENTS

Prior to mobilization at the job site, employees will attend a safety briefing. The briefing will include the nature of the wastes and the site, donning personal protection equipment, decontamination procedures and emergency procedures.

8. MEDICAL SURVEILLANCE REQUIREMENTS

If any task requires a very high personnel protection level, personnel shall provide assurances that they have received a physical examination and they are fit to do the task. Also personnel will be instructed to look for any symptom of heat stress, heat stroke, heat exhaustion or any other unusual symptom. If there is any report of that kind it will be immediately followed through, and appropriate action will be taken.

TPE SITE SAFETY PLAN

9. STANDARD OPERATION PROCEDURES

Tank Protect Engineering of Northern California, Inc. (TPE) is responsible for the safety of all TPE employees on site. Each contractor shall provide all the equipment necessary to meet safe operation practices and procedures for their personnel on site and be responsible for the safety of their workers.

A "Three Warning" system is utilized to enforce compliance with Health and Safety procedures practices which will be implemented at the site for worker safety:

- * Eating, drinking, chewing gum or tobacco, and smoking will be allowed only in designated areas.
- * Wash facilities will be utilized by workers in the work areas before eating, drinking, or use of the toilet facilities.
- * Containers will be labeled identifying them as waste, debris or contaminated clothing.
- * All Excavation/drilling work will comply with all applicable regulatory agencies requirements.
- * All site personnel will be required to wear hard hats and advised to take adequate measures for self protection.
- * Any other action which is determined to be unsafe by the site safety officer.

10. CONFINED SPACE ENTRY PROCEDURES

No one is allowed to enter any confined space operation without proper safety measures. Specifically in case of an excavated Tank Pit no one should enter at any time.

TPE SITE SAFETY PLAN

11. EMERGENCY RESPONSE PLAN

Fire extinguisher(s) will be on site prior to excavation. Relevant phone numbers:

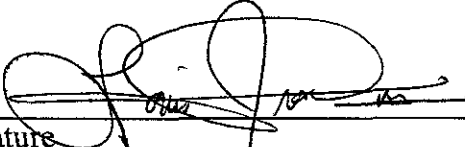
Person	Title	Phone No.
<u>Louis Travis III</u>	Project Manager	(510) 429-8088
_____	Fire	911 or _____
_____	Police	911 or _____
_____	Ambulance	911 or _____
_____	Poison Control Center	(800) 523-2222
_____	Site Phone	(510) 000-0000
_____	Nearest off-site no.	_____
<u>Eden Hospital</u>	Medical Advisor	(510) 889-5015
<u>Will Macedo</u>	Client Contact	(510) 537-3000
U.S EPA - ERT _____		(201) 321-6660
Chemtrec _____		(800) 424-9300
Centers for Disease Control _____	Day	(404) 329-3311
	Night	(404) 329-2888
National Response Center _____		(800) 424-8802
Superfund/RCRA Hotline _____		(800) 424-8802
TSCA Hotline _____		(800) 424-9065
National Pesticide Information Services _____		(800) 845-7633
Bureau of Alcohol, Tobacco, and Firearms _____		(800) 424-9555

TPE SITE SAFETY PLAN

HEALTH AND SAFETY COMPLIANCE STATEMENT

We, Louis Travis and Rick Martin, have received and read a copy of the project Health and Safety Plan.

I understand that I am required to have read the aforementioned document and have received proper training under the occupational Safety and Health Act (29 CFR, Part 1910.120) prior to conducting site activities at the site.



Signature

July 15, 1993
Date



Signature

July 15, 1993
Date

Hospital: **Eden Hospital**
20103 Lake Chabot Road
Castro Valley, CA 94546
Gen. Info. (510) 537-1234
Emergency (510) 889-5015

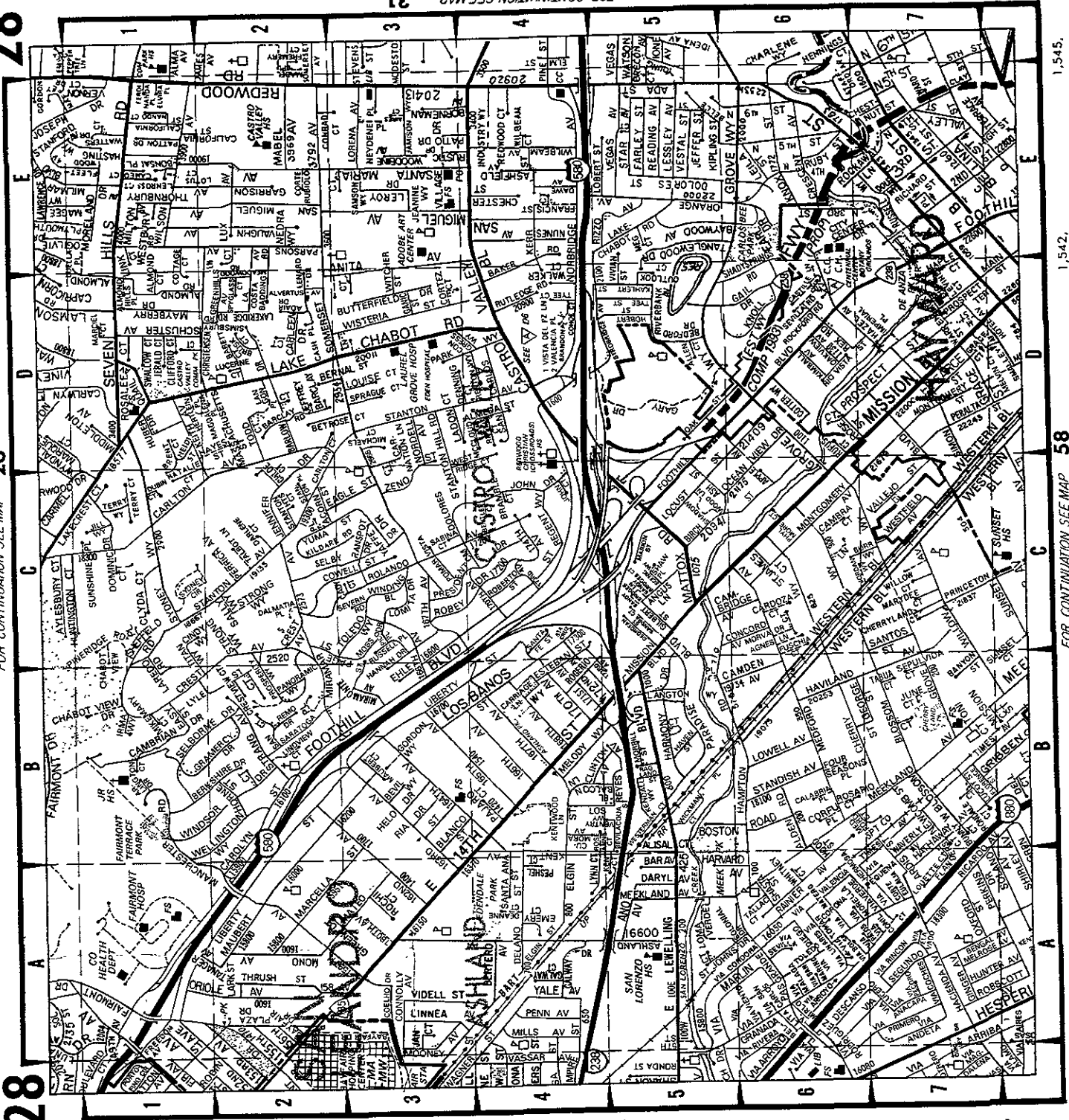
Directions From Site:

Drive southerly on Santa Maria Avenue to Somerset Avenue. Turn right (west) on Somerset Avenue. Proceed on Somerset Avenue to Lake Chabot Road. Turn left (southeast) on Lake Chabot Road. Look for the hospital on the right hand side.

28

FOR CONTINUATION SEE MAP 26

28



ALAMEDA CO.

DETAIL

444,

442,

434,

432,

1,530,

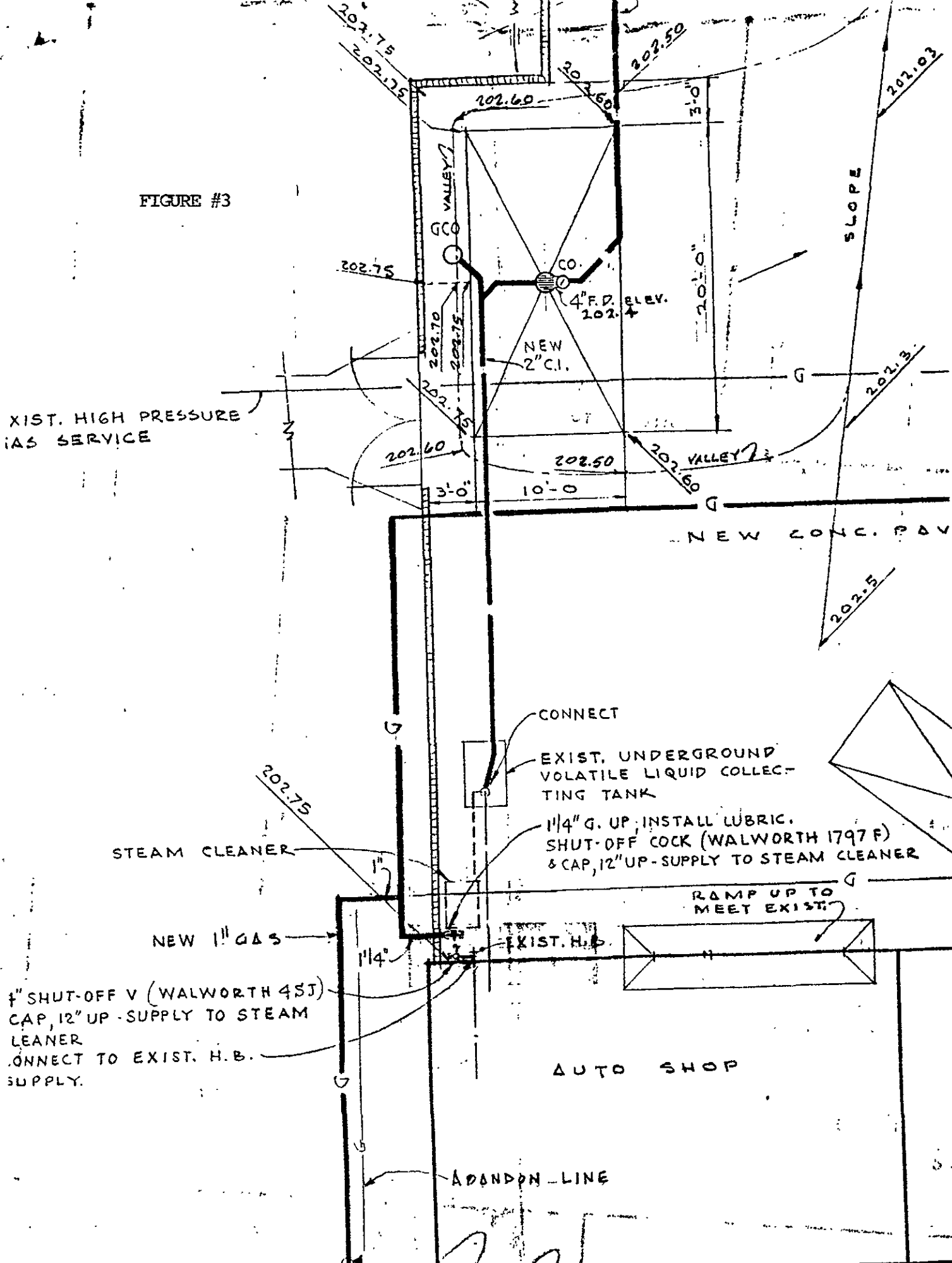
1,533,

FOR CONTINUATION SEE MAP 58

1,542,

1,545.

FIGURE #3



EXIST. HIGH PRESSURE GAS SERVICE

STEAM CLEANER

NEW 1" GAS

1/2" SHUT-OFF V (WALWORTH 45J)
CAP, 12" UP - SUPPLY TO STEAM CLEANER
CONNECT TO EXIST. H.B. SUPPLY.

CONNECT

EXIST. UNDERGROUND VOLATILE LIQUID COLLECTING TANK

1 1/4" G. UP, INSTALL LUBRIC. SHUT-OFF COCK (WALWORTH 1797 F) & CAP, 12" UP - SUPPLY TO STEAM CLEANER

RAMP UP TO MEET EXIST.

AUTO SHOP

ABANDON LINE