

# LEGEND

PARCEL BOUNDARY	---
PROPERTY OR R/W LINE	---
MONUMENT LINE	---
EASEMENTS	---
FENCE	---x---x---x---
TELEPHONE	T
UTILITY LAYOUT	U
OVERHEAD	OH
GAS LINE	C
STORM DRAINAGE	SD
SANITARY SEWER	SS
WATER LINE	W
ELECTROLLER	○
PRIVATE ELECTROLLER	○
POWER FOR JOINT POLE	○
FIRE HYDRANT	○
WATER METER	○
VALVE	○
BLOW OFF	○
MANHOLE	○
CATCH BASIN OR BOX	○
DIRECTION OF FLOW	→
STREET NAME SIGN	○
SIGN	○
APN NUMBER	74-431-25
FOUND CITY MONUMENT/BENCHMARK	⊙
RECORD OR DEED INFORMATION	(N 137° E)

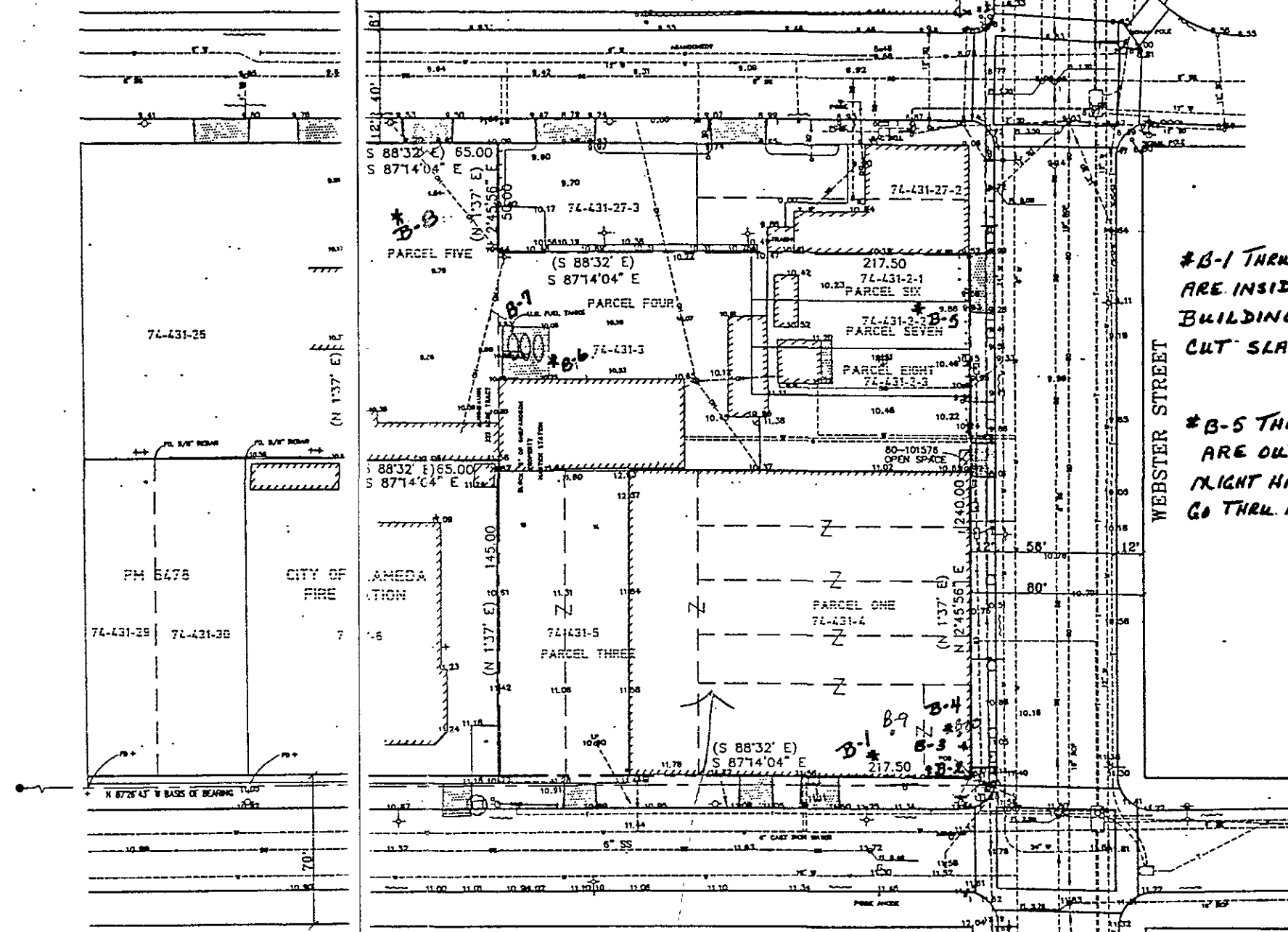
## NOTES

- (1) THE BOUNDARY EASEMENTS, AND OTHER ENCUMBRANCES SHOWN ON THIS DRAWING ARE BASED SOLELY UPON INFORMATION CONTAINED IN THE FOLLOWING DOCUMENTS: PRELIMINARY TITLE REPORT BY PREMIER TITLE CO. OF ALAMEDA COUNTY DATED JULY 5, 1990, ORDER NO. 93857 AND JANUARY 25, 1991, ORDER NO. 25942.
- (2) THE TYPES, LOCATION, SIZE AND OR DEPTHS OF EXISTING UNDERGROUND UTILITIES ARE SHOWN FROM SOURCES OF VARYING RELIABILITY. ONLY ACTUAL EXCAVATION WILL REVEAL THE TYPES, EXTENTS, SIZES AND DEPTHS OF UNDERGROUND UTILITIES.
- (3) BENCHMARK - U.S.C. & G.S. STATION MONUMENT AT THE NORTHWEST CORNER OF BUENA VISTA AVENUE AND WEBSTER STREET. ELEVATION TAKEN AS 7.681 FEET.  
- U.S.C. & G.S. STATION MONUMENT AT NORTHWEST CORNER OF PACIFIC AVENUE AND WEBSTER STREET. ELEVATION TAKEN AS 10.65 FEET.  
ELEVATIONS ARE BASED UPON CITY OF ALAMEDA DATUM.

## BASIS OF BEARINGS

LINE BETWEEN USC & GS MONUMENTS AT PACIFIC, SIXTH AND PACIFIC, WEBSTER TAKEN AS S 87°28'43" W

ENA VISTA AVENUE

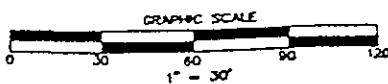


PACIFIC AVENUE

Ethel Koff Trust  
~~Beinta Leskowska~~ ownership  
 Beinta Leskowska Trust  
 LINCOLN AVENUE  
 (FORMERLY RAILROAD AVENUE)

#B-1 THRU #B-4  
 ARE INSIDE THE  
 BUILDING. MUST  
 CUT SLAB.

#B-5 THRU #B-8  
 ARE OUTSIDE.  
 MIGHT HAVE TO  
 GO THRU ASPHALT.



LYNN BOWERS & ASSOCIATES, INC.  
 civil & traffic engineering • land planning • surveying  
 4466 Black Ave., Suite G, Pleasanton, CA 94566  
 Phone (510) 464-3443 • Fax (510) 464-3332  
 DESIGNED UNDER THE SUPERVISION OF  
 LYNN BOWERS  
 LICENSE NO. 51001 EXPIRES 9/30/93

ALTA SURVEY  
 BUENA VISTA COMMERCIAL DEVELOPMENT  
 PEGASUS DEVELOPMENT CO. CALIFORNIA  
 ALAMEDA

DATE: MARCH 92  
 SCALE: 1"=30'  
 PROJ: 92-2  
 DWN. BY: B.L.K.  
 1/2

Map of lot 8 soil borings

B5 - B8 were done on  
the adjacent property which  
we do not own.