

9/5/91

BORING LOG

Project MRCP
 Location Emeryville
 Job # 0389058.00
 Geologist/Engineer Don McClenagan
 Drill Agency Bay Area Exploration

Hole/Well # MW-7
 Diameter of Drill Hole 10.5 inches
 Total Depth of Hole 22 feet
 Date Started 1-3-90
 Date Completed 1-4-90

DEPTH IN FEET	WELL CONSTRUCTION DETAIL	N-VALUE	SAMPLE	GRAPHIC SYMBOL	DESCRIPTION	
0	<p>Diagram labels: PLUG, LOCKING VAULT, CEMENT GROUT, 4" SCH 40 PVC CASING, BENTONITE, 4" SCH 40 PVC SLOTTED CASING, #3 SAND, END CAP.</p>				0-.3' asphalt	
2				GM	.3-1' medium brown sandy gravel, damp, loose	
4						4.5-5' yellow silty gravel, damp, some chemical odor, loose
6			6 8 7	8-1		5-6' black silty clay, 5% gravel, stiff, damp, some odor
8					CL	
10			3 13 21	8-2		9.5-11' yellow silt, 15% gravel, damp, brick and glass fragments, loose, saturated with oily substance at 10'
12					ML	14.5-16 20% gravel
14						
16			3 6 6	8-3		
18					SW	at 20.5' - dark brown silty clay, saturated, shell fragments no chemical odor
20						groundwater first encountered: 14.5'
22			11 8 6	8-4	CL	Static level: 13.25'

BORING LOG

Project MRCP
 Location Emeryville
 Job # 0389058.00
 Geologist/Engineer Don McClenagan
 Drill Agency Bay Area Exploration

Hole/Well # B-9
 Diameter of Drill Hole 5 inches
 Total Depth of Hole 9 feet
 Date Started 1-4-90
 Date Completed 1-5-90

DEPTH IN FEET	WELL CONSTRUCTION DETAIL	N-VALUE	SAMPLE	GRAPHIC SYMBOL	DESCRIPTION
0					0-3' asphalt Yellow brown gravelly silt, damp, 15% gravel, loose
2		ML			
4		11 19 21	9-1	---	4-5.5 Medium brown silty gravel, brick, concrete frags, damp, loose, no odor
6					
8		GM			
10		10 11 21	9-2	---	9-10.5 light brown gravel (brick & concrete frags, glass, nails, aluminum shavings), saturated with oily substance at 10', loose, strong odor
12					
14					
16					
18					

BORING LOG

Project MRCP
 Location Emeryville
 Job # 0389058.00
 Geologist/Engineer Don McClenagan
 Drill Agency Bay Area Exploration

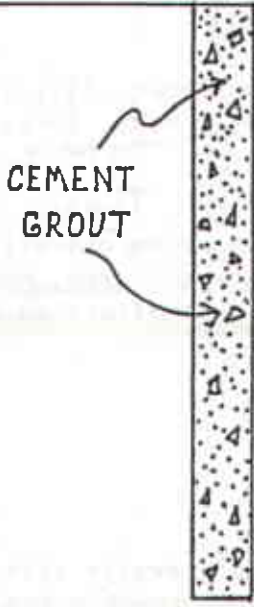
Hole/Well # H-13
 Diameter of Drill Hole 5 inches
 Total Depth of Hole 9 feet
 Date Started 1-4-90
 Date Completed 1-5-90

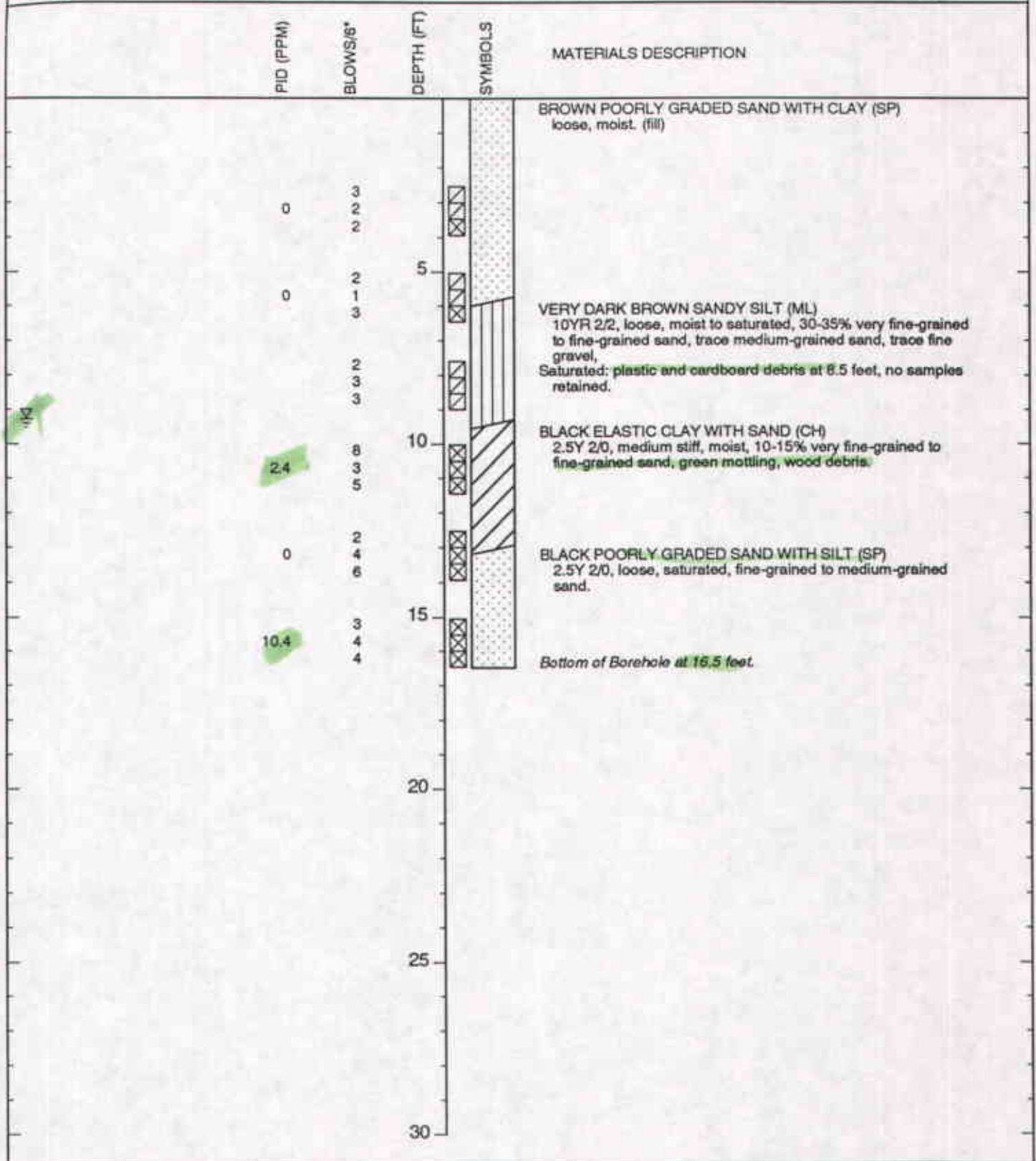
DEPTH IN FEET	WELL CONSTRUCTION DETAIL	N-VALUE	SAMPLE	GRAPHIC SYMBOL	DESCRIPTION	
0					0-.3' asphalt	
2					.3-2' medium brown silt, 5% gravel, slightly damp, loose, no odor	
4			9		ML	4-5.5' 30% construction debris and gravel, loose, no odor
6		14				
8		18	13-1			
10			6		SW	at 10' green, well graded sand, coarse, loose, damp, no odor
			7			
			12	13-2		

BORING LOG

Project MRCP
 Location Emeryville
 Job # 0389058.00
 Geologist/Engineer Don McClenagan
 Drill Agency Bay Area Exploration

Hole/Well # B-10
 Diameter of Drill Hole 5 inches
 Total Depth of Hole 9 feet
 Date Started 1-4-90
 Date Completed 1-5-90

DEPTH IN FEET	WELL CONSTRUCTION DETAIL	N-VALUE	SAMPLE	GRAPHIC SYMBOL	DESCRIPTION
0	 <p>CEMENT GROUT</p>				0-3 asphalt medium brown, damp, loose, slight odor
2				GM	
4			4		
6		7			
8		8	10-1	ML	
10		4			9-10.5 dark brown, gravel cgl, construction debris, saturated with oily substance
		4			
		5	10-2	GM	



CLIENT	Nady Systems Site	DIAMETER OF HOLE	8 inches
LOCATION	6707 Bay Street, Emeryville, CA	TOTAL DEPTH OF HOLE	16.5 feet
JOB NUMBER	MP001B	TOP OF CASING ELEVATION	
GEOLOGIST/ENGINEER	J. Gill	DATE STARTED	9/5/91
DRILL RIG	Truck Mounted C-57	DATE COMPLETED	9/5/91

PLATE
A-2



PID (PPM)	BLOWS/8"	DEPTH (FT)	SYMBOLS	MATERIALS DESCRIPTION
				BROWN POORLY GRADED SAND WITH CLAY AND GRAVEL (SP) - loose, moist, (fill)
0	3	3	[Symbol: Diagonal lines]	
	3	3		
	4	4		
0	4	5	[Symbol: Diagonal lines]	
	3	5		
	2	5		
0.6	3	7	[Symbol: Diagonal lines]	Cobbles or concrete debris at 7 feet.
	3	7		VERY DARK GRAY TO BLACK SILTY SAND (SM)
	4	7		loose, saturated, fine-grained to coarse-grained sand, wood debris and concrete debris.
2.4	2	10	[Symbol: Diagonal lines]	
	5	10		
	4	10		Driller noted cobbles at 11 feet.
7200	5	13	[Symbol: Diagonal lines]	BLACK SANDY GRAVEL WITH SILT (GW)
	9	13		5Y 2.5/1, very loose, saturated.
	7	13		
5.5	3	15	[Symbol: Diagonal lines]	DARK GREENISH GRAY SANDY ELASTIC SILT (MH)
	3	15		5BG 4/1, soft, moist to saturated, 15-20% very fine-grained sand.
	3	15		BLACK SILT WITH SAND (ML)
				7.5YR 2/0, soft, moist, wood debris.
				Bottom of Borehole at 16.5 feet.

CLIENT Nady Systems Site
 LOCATION 6707 Bay Street, Emeryville, CA
 JOB NUMBER MP0018
 GEOLOGIST/ENGINEER J. Gill
 DRILL RIG Truck Mounted C-57

DIAMETER OF HOLE 8 inches
 TOTAL DEPTH OF HOLE 16.5 feet
 TOP OF CASING ELEVATION
 DATE STARTED 9/5/91
 DATE COMPLETED 9/5/91

PLATE
A-3

Blows per 1/2 Ft.	SAMPLE NUMBERS	USCS	DEPTH IN FEET	DESCRIPTION	WELL CONST.
			- 0	0.2 ft. Asphalt Brown, damp, loose gravel and SAND	HEAT CEMENT
		GM	- 1	Gray-brown, damp to moist, medium-dense, gravel (concrete fragments) cobbles and SAND	
			- 2		BENTONITE SEAL BLANK CASING
			- 3		
			- 4		BENTONITE SEAL BLANK CASING
			- 5		
15 19 25	S-B1-5.5	CL	- 5	Blue-gray, damp to moist, firm to stiff, gravelly CLAY OVA = 340	NO. 3 SAND SLOTTED CASING
			- 6		
			- 7		
			- 8		
		SM	- 9	Gray and white (salt & pepper), moist to wet, medium dense, very-fine-grained SAND with shell fragments OVA = 370	
5 12 18	S-B1-10.5		- 10	GROUND WATER	
			- 11		
			- 12		
			- 13		
			- 14		
2 3 19	S-B1-16	CL	- 16	Light-gray and dark blue gray, saturated, stiff, CLAY with wood fibers and greasy, hydrocarbon and transformer odor OVA = 640	
			- 17		
			- 18		
			- 19		
		CL/SM	- 20	Light gray and blue gray, saturated, firm to stiff CLAY with sand and wood fragments OVA = 520	



ALCO HAZMAT
9/4 JUN -7 P112-40

ALCO HAZMAT

ARCP

9/4 JUN -7 P112-40



Environmental Services, Inc.
2111 Jennings St. San Francisco, CA 94124-3224
(415) 822-4555 FAX (415) 822-5290

LOG OF BORING B-1

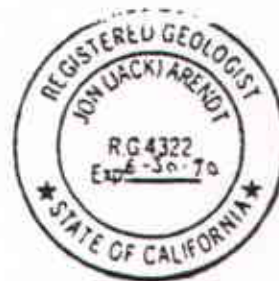
Mike Roberts Color Productions
6707 Bay Street
Emeryville, California

PROJECT NUMBER: 9077

MRCP 00738

PLATK
1a

Blow per 1/2 Ft.	SAMPLE NUMBERS	UNCS	DEPTH IN FEET	DESCRIPTION	WELL CONST.
14 14 17	S-B1-20.5	CL/SM	- 20 - 21 - 22 - 23 - 24	Light gray and blue gray, saturated, firm to stiff CLAY with sand and wood fragments OVA = 520 wood fragments common	NO. 3 SAND SLOTTED CASING
10 13 30	S-B1-25.5	CL	- 25 - 26 - 27 - 28 - 29	Brown to tan, wet, stiff CLAY (few wood fibers) OVA = 350	BLANK CASING
5 11 32	S-B1-30.5	CL SM	- 30 - 31	Brown to tan, saturated, stiff CLAY Light-gray, saturated, medium-dense, silty, very-fine-grained SAND	
			- 32 - 33 - 34 - 35 - 36 - 37 - 38 - 39 - 40	Total Depth: 31.5 feet Ground water encountered at 10.7 feet Monitoring well installed 7-5-89 0 - 5.0 ft. blank casing 5.0 - 25.0 ft. slotted casing 25.0 - 30.0 ft. blank casing Well developed on 7-6-89	



Environmental Services, Inc.
2111 Jennings St., San Francisco, CA 94124-3224
(415) 822-4555 FAX (415) 822-5290

LOG OF BORING B-1

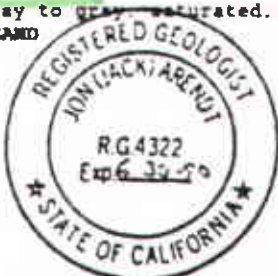
Mike Roberts Color Productions
6707 Bay Street
Emeryville, California

PROJECT NUMBER: 9077

MRCP 00739

PLATE
1b

Blows per 1/2 Ft.	SAMPLE NUMBER	USCS	DEPTH IN FEET	DESCRIPTION	WELL CONST.
		GW	- 0	0.2 ft. Asphalt Gray-brown, damp, loose, sandy GRAVEL	
		CL	- 1		
		CL	- 2	Blue-gray, moist, soft, silty, sandy, <u>CLAY with some organics</u>	
			- 3		
			- 4		
			- 5	Blue-gray, moist, soft, silty, sandy, CLAY with some organics OVA = 0	
7 8 8	S-B2-6		- 6		
			- 7		
			- 8		
			- 9		
12 45 31	S-B2-10	SM	- 10	Blue-gray and light-gray, moist to wet, loose silty, clayey, fine to medium grained SAND <u>slight hydrocarbon odor</u> OVA = 40	
		SM	- 11	<u>GROUND WATER</u> Light-gray to gray, saturated, medium dense, silty, SAND	
			- 12		
			- 13		
			- 14		
10 14 17	S-B2-16	CL	- 15		
		CL	- 16	Light-brown, saturated, soft to firm, gravelly <u>CLAY, trace hydrocarbon odor</u> OVA = 540	
			- 17		
			- 18		
		CL	- 19		
		CL	- 20	Blue gray, saturated, very soft CLAY OVA = 320	



BACKFILLED WITH PORTLAND CEMENT ON JULY 5, 1989

LW Environmental Services, Inc.
2111 Jennings St., San Francisco, CA 94124-3224
(415) 822-4555 FAX (415) 822-5290

LOG OF BORING B-2
Mike Roberts Color Productions
6707 Bay Street
Emeryville, California

PROJECT NUMBER: 9077

MRCP 00740

PLATE
2a

Blows per 1/2 Ft.	SAMPLE NUMBERS	UNCS	DEPTH IN FEET	DESCRIPTION	WELL CONST.
6 5 8	E-B2-20.5	CL	- 20 - 21	Blue gray, saturated, very soft CLAY OVA = 320	
			- 22 - 23 - 24 - 25 - 26 - 27 - 28 - 29 - 30 - 31 - 32 - 33 - 34 - 35 - 36 - 37 - 38 - 39 - 40	<p>Total Depth: 21.5 feet Ground water encountered at 21.5 feet No caving Backfilled with portland cement 7-5-89</p>	



Environmental Services, Inc.
2111 Jennings St. San Francisco, CA 94124-3224
(415) 822-4555 FAX (415) 822-5290

LOG OF BORING B-2

Mike Roberts Color Productions
6707 Bay Street
Emeryville, California

PROJECT NUMBER: 9077

MRCP 00741

PLATE
2b

BLows PER FOOT	SAMPLE NUMBERS	LOGS	DEPTH IN FEET	DESCRIPTION	WELL CONDT.
			- 0	<u>Fill</u>	
			- 1	Chunks of concrete, brick and debris	
			- 2		
		SM	- 3	Dark gray, damp, medium dense, silty <u>SAND</u> with brick and debris	
10 8 7	S-B3- 5.0		- 4	<u>Native bay mud & fill debris</u>	
		SC	- 5	Red-brown and gray, dense, silty <u>CLAYEY SAND</u> with brick and debris OVA = 50	
			- 6		
			- 7		
			- 8	<u>GW encountered</u>	
		CL	- 9	Gray-blue gray, wet, soft, silty <u>CLAY</u> with gravel	
2 2 2	NR		-10		
			-11		
	S-B3- 12	CL	-12	Blue-gray, wet, soft, silty, gravelly <u>CLAY</u> with gravel OVA = 150	
			-13		
			-14	<u>BAY MUD WITH FILL</u>	
Push for 18"	S-B3- 15	CL	-15	Blue, green, gray and black, wet, soft, gravelly <u>CLAY</u> 1/3 sample saturated with black, old HC oil OVA = 260	
			-16		
			-17		
			-18		
			-19	<u>OLDER BAY MUD</u>	
Push for 18	S-B3- 20	CL	-20	Light brown-tan, wet, stiff, sandy <u>CLAY</u> OVA = 260	



Environmental Services, Inc.
 2111 Jennings St. San Francisco, CA 94124-3224
 (415) 622-4555 FAX (415) 622-5290

LOG OF BORING B-3

Mike Roberts Color Productions
 6707 Bay Street
 Emeryville, California

PROJECT NUMBER: 9077

MRCP 00742

PLATE
3a

BLDG PER FOOT	SAMPLE NUMBERS	DEPTH IN FEET	DESCRIPTION	WELL COUNT.
		-20	Light brown-tan, wet, stiff, sandy <u>CLAY</u> OVA - 260	
		-21		
		-22		
		-23		
		-24		
Push for 12"	S-83- 25	-25	Light brown-tan, wet, stiff, sandy <u>CLAY</u>	
1 for 6"		-26		
		-27		
		-28		
		-29	Total Depth: 26.0 feet Ground water encountered at 9.8 feet Monitoring well installed 8-23-89	
		-30	0 - 5.0 ft. blank casing 5.0 - 25.0 ft. slotted casing Well developed on 9-7-89	
		-31		
		-32		
		-33		
		-34		
		-35		
		-36		
		-37		
		-38		
		-39		
		-40		



Environmental Services, Inc.
2111 Jennings St. San Francisco, CA 94124-3224
(415) 622-4555 FAX (415) 622-5290

LOG OF BORING B-3

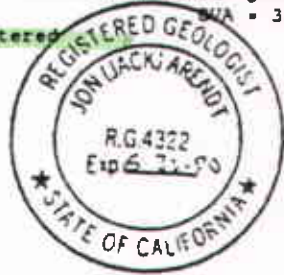
Mike Roberts Color Productions
6707 Bay Street
Emeryville, California

PROJECT NUMBER: 9077

MRCP 00743

PLATE
3b

BLDG PER FOOT	SAMPLE NUMBERS	TEST	DEPTH IN FEET	DESCRIPTION	WELL CONSTR.
		GP	- 0	<u>FILL</u> Light brown, damp, loose to medium dense, silty, gravely <u>SAND</u> /sandy <u>GRAVEL</u>	
			- 1		
			- 2		
			- 3		
12 26 21	S-B4- 4.5	GP	- 4	Light brown, damp, loose to medium dense, gravely <u>SAND</u> , sandy gravel OVA - 140	
			- 5		
			- 6		
			- 7	(Hard drilling)	
			- 8		
		SP	- 9	Light gray to light brown, damp, dense, gravel and <u>SAND</u>	
5 7 5	S-B4- 10	CL	-10	Blue-gray and brown, moist, wet, dense, gravelly, sandy <u>CLAY</u> OVA - 320	
			-11	Ground water encountered	
			-12		
			-13		
			-14		
6 5 3	S-B4- 14.5	GP	-15	Blue-gray, wet, saturated, dense, sandy, clayey <u>GRAVEL</u> , tr. old, black HC OVA - 480	
			-16	Refusal at 16'	
			-17		
			-18	Lost lead auger in hole - abandoned hole Hole caving at 6' - 9'	
			-19	Total Depth: 16.0 feet	
			-20	Ground water encountered at 10.5 ft.	



Environmental Services, Inc.
2111 Jennings St., San Francisco, CA 94124-3224
(415) 822-4555 FAX (415) 822-5290

LOG OF BORING B-4

Mike Roberts Color Productions
6707 Bay Street
Emeryville, California

PROJECT NUMBER: 9077

MRCP 00744

PLATE
4a

BLDG PER FOOT	SAMPLE NUMBERS	DEPTH IN FEET	DESCRIPTION	WELL CONST.
		GP - 0	<u>FILL</u> Light gray-tan. dry to damp. loose. silty. sandy <u>GRAVEL</u>	
		- 1		
		- 2		
		GC - 3	Light gray-gray brown. damp. firm. silty. gravelly <u>CLAY</u>	
		- 4		
		- 5		
8 21 13	S-B5- 6.0	SM - 6	Light gray and medium gray (S & P). damp. moist. mud. dense. silty. finegrained <u>SAND</u> OVM = 190	
		- 7		
		- 8		
		SM - 9	Gray. moist. medium dense. silty <u>SAND</u>	
		- 10		
8 24 28	S-B5- 4.0	GP - 10	<u>GRAVEL</u> and debris	
		- 11	Groundwater encountered OVM = 300	
		- 12	(Oil/grease common in sample shoe)	
		- 13		
		- 14		
1 2 1	S-B5- 15.5	CL - 15	Dark gray. moist-wet. soft. silty <u>CLAY</u> Sampler covered with oil and grease	
		- 16		
		- 17		
		- 18		
		- 19		
		- 20	Dark gray. wet. soft to firm silty <u>CLAY</u>	



Environmental Services, Inc.
2111 Jennings St. San Francisco, CA 94124-3224
(415) 822-4555 FAX (415) 822-5290

LOG OF BORING B-5
Mike Roberts Color Productions
6707 Bay Street
Emeryville, California

PROJECT NUMBER: 9077

MRCP 00745

PLATE
5a

BLOW PER FOOT	SAMPLE NUMBERS	CL	DEPTH IN FEET	DESCRIPTION	WELL CONDT.
11 12 15	no recovery	CL	-20	Dark gray, wet, soft-firm, silty <u>CLAY</u>	
	S-B5- 22.5	CL	-22	Dark gray as above and light brown-tan, moist-wet, stiff, silty <u>CLAY</u> OVA = 430	
10 11 10	S-B5- 25.5	CL	-26	Light brown, tan, wet, stiff, silty <u>CLAY</u> OVA = 430	
			-27		
			-28		
			-29		
			-30	Total Depth: 26.5 feet Ground water encountered at 10.3 ft. Monitoring well installed 8-31-89	
			-31	0 - 5.0 ft. blank casing	
			-32	5.0 - 25.0 ft. slotted casing	
			-33	Well developed on 9-7-89	
			-34		
			-35		
			-36		
			-37		
			-38		
			-39		
			-40		



LW Environmental Services, Inc.
2111 Jennings St., San Francisco, CA 94124-3224
(415) 822-4555 FAX (415) 822-5290

LOG OF BORING B-5
Mike Roberts Color Productions
6707 Bay Street
Emeryville, California

PROJECT NUMBER: 9077

MRCP 00746

PLATE
5b

BLDG PER FOOT	SAMPLE NUMBERS	USCS	DEPTH IN FEET	DESCRIPTION	WELL CONDT.
		GP	- 0	<u>FILL</u> Light gray, damp-moist, loose, medium dense, silty, sandy. <u>GRAVEL</u>	
			- 1		
			- 2		
		GC	- 3	Gray-brown, damp, loose-medium dense, sandy, clayey <u>GRAVEL</u>	
			- 4		
			- 5		
			- 6		
			- 7		
		CL	- 8	Light gray-dark gray, moist, dense, gravelly, sandy <u>CLAY</u>	
			- 9		
		CL	-10	Blue-gray, moist-wet, soft-firm, gravelly, sandy <u>CLAY</u>	
			-11		
			-12		
			-13		
			-14		
		CL	-15	Blue-gray, wet, soft-firm, sandy <u>CLAY</u>	
		CL	-16	Blue-gray, wet, soft-firm, sandy <u>CLAY</u>	
			-17		
			-18		
			-19		
		CL	-20	Blue-gray and tan, wet, soft-stiff, sandy <u>CLAY</u>	



Environmental Services, Inc.
2111 Jennings St., San Francisco, CA 94124-3224
(415) 822-4555 FAX (415) 822-5290

LOG OF BORING B-6

Mike Roberts Color Productions
6707 Bay Street
Emeryville, California

PROJECT NUMBER: 9077

MRCP 00747

PLATE
6a

ELEVATION PER FOOT	SAMPLE NUMBERS	CLASSIFICATION	DEPTH IN FEET	DESCRIPTION	WELL CONST.
10 21 15	S-B6- 20.5	CL	-20 -21 -22 -23 -24	Light brown-tan. wet. stiff, sandy <u>CLAY</u> OVA = 410	
8 10 15	S-B6- 25.0	CL	-25 -26 -27 -28 -29 -30 -31 -32 -33 -34 -35 -36 -37 -38 -39 -40	Light brown-tan. wet. stiff-very stiff. sandy <u>CLAY</u> OVA = 350 Total Depth: 26.5 feet Ground water encountered at 10.5 ft. Monitoring well installed on 8-31-89 0 - 5.0 ft. blank casing 5.0 - 25.0 ft. slotted casing Well developed on 9-7-89	



Environmental Services, Inc.
2111 Jennings St. San Francisco, CA 94124-3224
(415) 822-4555 FAX (415) 822-5290

LOG OF BORING B-6

Mike Roberts Color Productions
6707 Bay Street
Emeryville, California

PROJECT NUMBER: 9077

MRCP 00748

PLATE
6b

BORING LOG

Project MRCP
 Location Emeryville
 Job # 0389058.00
 Geologist/Engineer Don McClenagan
 Drill Agency Bay Area Exploration

Hole/Well # MW-7
 Diameter of Drill Hole 10.5 inches
 Total Depth of Hole 22 feet
 Date Started 1-3-90
 Date Completed 1-4-90

DEPTH IN FEET	WELL CONSTRUCTION DETAIL	N-VALUE	SAMPLE	GRAPHIC SYMBOL	DESCRIPTION	
0	<p> The diagram shows a vertical well casing starting with a PLUG at the surface. Below the plug is a LOCKING VAULT. The casing consists of two sections: 4" SCH 40 PVC CASING from 0 to 6 feet, and 4" SCH 40 PVC SLOTTED CASING from 6 to 22 feet. The casing is surrounded by CEMENT GROUT. At 6 feet, there is a layer of BENTONITE. Below 14 feet, the casing is surrounded by #3 SAND. An END CAP is located at the bottom of the casing at 22 feet. A groundwater table symbol is shown at a depth of 13.25 feet. </p>				0-.3' asphalt	
2				GM	.3-1' medium brown sandy gravel, damp, loose	
4						4.5-5' yellow silty gravel, damp, some chemical odor, loose
6			6			5-6' black silty clay, 5% gravel, stiff, damp, some odor
8			7	8-1	CL	
10			3			9.5-11' yellow silt, 15% gravel, damp, brick and glass fragments, loose, saturated with oily substance at 10'
12			13	8-2	ML	14.5-16 20% gravel
14			21			
16			3			
18			6	8-3	SW	at 20.5' - dark brown silty clay, saturated, shell fragments no chemical odor
20			11			groundwater first encountered: 14.5'
22			8			Static level: 13.25'
			6	8-4	CL	MRCP 00120

BORING LOG

Project MRCP
 Location Emeryville
 Job # 0389058.00
 Geologist/Engineer Don McClenagan
 Drill Agency Bay Area Exploration

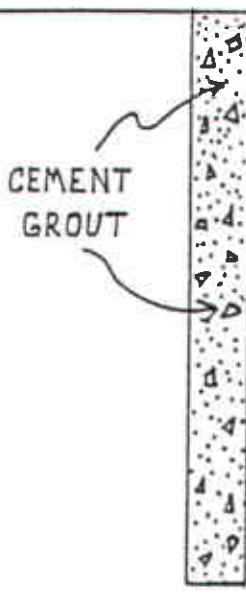
Hole/Well # MW-8
 Diameter of Drill Hole 10.5 inches
 Total Depth of Hole 21.5 feet
 Date Started 1-3-90
 Date Completed 1-4-90

DEPTH IN FEET	WELL CONSTRUCTION DETAIL	N-VALUE	SAMPLE	GRAPHIC SYMBOL	DESCRIPTION	
0	<p> The diagram shows a vertical well casing starting with a PLUG at the surface. Below the plug is a LOCKING VAULT. The casing consists of 4" SCH 40 PVC CASING from 0 to 6 feet, and 4" SCH 40 PVC SLOTTED CASING from 6 to 21.5 feet. The casing is surrounded by CEMENT GROUT. A layer of BENTONITE is located between the 6-foot and 10-foot casing sections. Below the bentonite is #3 SAND. At the bottom of the well is an END CAP. A groundwater table symbol is shown at approximately 11 feet depth. </p>				0-1' dark brown gravelly silt, 20% gravel, damp, loose	
2				ML		
4						5-6.5' dark brown sandy clay, 1% gravel, 10% organic mat., damp, stiff, no chem. odor
6			5			
			8			
			11	7-1		
8						
10			9		CL	
			10			10-11.5' gray, hard concrete or mortar, slightly damp, strong chemical odor
			11	7-2		
12						
14						
			6			15-16.5' dark grey clay, saturated, wood and plant fiber, strong chemical odor
			5			
			4	7-3		
18					CH	20-21.5' dark grey-green to yellow, silty clay, saturated, strong odor
20						groundwater first encountered at 15 feet
22				7-4		

MRCP 00121

Project MRCP
 Location Emeryville
 Job # 0389058.00
 Geologist/Engineer Don McClenagan
 Drill Agency Bay Area Exploration

Hole/Well # B-9
 Diameter of Drill Hole 5 inches
 Total Depth of Hole 9 feet
 Date Started 1-4-90
 Date Completed 1-5-90

DEPTH IN FEET	WELL CONSTRUCTION DETAIL	N-VALUE	SAMPLE	GRAPHIC SYMBOL	DESCRIPTION
0				ML	0-3' asphalt Yellow brown gravelly silt, damp, 15% gravel, loose
2					
4		11			4-5.5 Medium brown silty gravel, brick, concrete frags, damp, loose, no odor
6		19	9-1		
8				GM	
10		10			9-10.5 light brown gravel (brick & concrete frags, glass, nails, aluminum shavings), saturated with oily substance at 10', loose, strong odor
		11			
		21	9-2		

MRCP 00122

Project MRCP
 Location Emeryville
 Job # 0389058.00
 Geologist/Engineer Don McClenagan
 Drill Agency Bay Area Exploration

Hole/Well # B-10
 Diameter of Drill Hole 5 inches
 Total Depth of Hole 9 feet
 Date Started 1-4-90
 Date Completed 1-5-90

DEPTH IN FEET	WELL CONSTRUCTION DETAIL	N-VALUE	SAMPLE	GRAPHIC SYMBOL	DESCRIPTION	
0					0-3 asphalt medium brown, silty gravel, damp, loose, slight odor	
2				GM		
4			4			4-5.5 brown silt, wood fragments, brick and concrete frags, strong odor, staured with oily substance
7			8	10-1		
8					ML	
9			4			9-10-5 dark brown, gravel cgl, construction debris, saturated with oily substance
10			4			
			4		GM	
			5	10-2		

MRCP 00123

Project MRCP
 Location Emeryville
 Job # 0389058.00
 Geologist/Engineer Don McClenagan
 Drill Agency Bay Area Exploration

Hole/Well # B-11
 Diameter of Drill Hole 5 inches
 Total Depth of Hole 9 feet
 Date Started 1-4-90
 Date Completed 1-5-90

DEPTH IN FEET	WELL CONSTRUCTION DETAIL	N-VALUE	SAMPLE	GRAPHIC SYMBOL	DESCRIPTION	
0					0-.3' asphalt	
2				ML	.3-1 yellow brown silt, 20% gravel, slightly damp, loose	
4					4-6.5 medium brown gravelly caly, 15% gravel, damp, medium stiff, construction debris	
6			2 6 8		CL	
8				11-1		
10					9-10.5' brown gravelly silt, 50% gravel, construction debris, loose, chemical odor, saturated with oily substance	
		6 4 8		ML		
			11-2			

MRCP 00124

Project MRCP
 Location Emeryville
 Job # 0389058.00.
 Geologist/Engineer Don McClenagan
 Drill Agency Bay Area Exploration

Hole/Well # B-12
 Diameter of Drill Hole 5 inches
 Total Depth of Hole 9 feet
 Date Started 1-4-90
 Date Completed 1-5-90

DEPTH IN FEET	WELL CONSTRUCTION DETAIL	N-VALUE	SAMPLE	GRAPHIC SYMBOL	DESCRIPTION	
0	<p>CEMENT GROUT</p>				0-.3' asphalt	
2					.3-2' medium brown clayey silt, 5% gravel, loose, slightly damp, no odor	
4			5		ML	4-5.5' dark brown clayey silt, 20% construction debris & gravel, loose, damp
6			9			
8			10			
10			5		SW	10-10.5 Green well graded sand, coarse, damp, loose
			7			
			13			

MRCP 00125

Project MRCP

Hole/Well # B-13

Location Emeryville

Diameter of Drill Hole 5 inches

Job # 0389058.00



Total Depth of Hole 9 feet

Geologist/Engineer Don McClenagan

Date Started 1-4-90

Drill Agency Bay Area Exploration

Date Completed 1-5-90

DEPTH IN FEET	WELL CONSTRUCTION DETAIL	N-VALUE	SAMPLE	GRAPHIC SYMBOL	DESCRIPTION
0					
0-.3'					asphalt
.3-2'					medium brown silt, 5% gravel, slightly damp, loose, no odor
2	CEMENT GROUT				
4					
4-5.5'			9 14 18	ML	30% construction debris and gravel, loose, no odor
6			13-1		
8					
10					
10		6 7 12	SW	at 10' green, well graded sand, coarse, loose, damp, no odor	

MRCP 00126

PID (PPM)	BLOWS/6"	DEPTH (FT)	SYMBOLS	MATERIALS DESCRIPTION
				BROWN POORLY GRADED SAND WITH CLAY (SP) loose, moist (fill)
0	2 2 2	5		
0	2 1 3	5		
	2 3			VERY DARK BROWN SANDY SILT (ML) 10YR 2/2, loose, moist to saturated, 30-35% very fine-grained to fine-grained sand, trace medium-grained sand, trace fine gravel. Saturated: plastic and cardboard debris at 8.5 feet, no samples returned.
2.4	8 3 5	10		BLACK ELASTIC CLAY WITH SAND (CH) 2.5Y 2/0, medium stiff, moist, 10-15% very fine-grained to fine-grained sand, green mottling, wood debris.
0	2 4 6			BLACK POORLY GRADED SAND WITH SILT (SP) 2.5Y 2/0, loose, saturated, fine-grained to medium-grained sand.
10.4	3 4 4	15		
				Bottom of Borehole at 16.5 feet.
		20		
		25		
		30		

MR 000311

CLIENT	Nady Systems Site	DIAMETER OF HOLE	8 inches
LOCATION	6707 Bay Street, Emeryville, CA	TOTAL DEPTH OF HOLE	16.5 feet
JOB NUMBER	MP001B	TOP OF CASING ELEVATION	
GEOLOGIST/ENGINEER	J. Gil	DATE STARTED	9/5/91
DRILL RIG	Truck Mounted C-57	DATE COMPLETED	9/5/91

PLATE
A-2



PID (PPM)	BLOWS/ft*	DEPTH (FT)	SYMBOLS	MATERIALS DESCRIPTION
				BROWN POORLY GRADED SAND WITH CLAY AND GRAVEL (SP) - loose, moist. (fill)
0	3 3 4		[Symbol: Diagonal lines]	
0	4 3 2	5	[Symbol: Diagonal lines]	
				Cobbles or concrete debris at 7 feet.
0.6	3 3 4		[Symbol: Vertical lines]	VERY DARK GRAY TO BLACK SILTY SAND (SM) loose, saturated, fine-grained to coarse-grained sand, wood debris and concrete debris.
				Driller noted cobbles at 11 feet.
2.4	2 5 4	10	[Symbol: Diagonal lines]	
				BLACK SANDY GRAVEL WITH SILT (GW) 5Y 2.5/1, very loose, saturated.
7200	5 9 7		[Symbol: Dotted pattern]	
				DARK GREENISH GRAY SANDY ELASTIC SILT (MH) 5BG 4/1, soft, moist to saturated, 15-20% very fine-grained sand.
5.5	3 3 3	15	[Symbol: Horizontal lines]	BLACK SILT WITH SAND (ML) 7.5YR 2/0, soft, moist, wood debris.
				Bottom of Borehole at 16.5 feet.
		20		
		25		
		30		

MR 000312

CLIENT Nady Systems Site
 LOCATION 6707 Bay Street, Emeryville, CA
 JOB NUMBER MP0018
 GEOLOGIST/ENGINEER J. Gill
 DRILL RIG Truck Mounted C-57

DIAMETER OF HOLE 8 inches
 TOTAL DEPTH OF HOLE 16.5 feet
 TOP OF CASING ELEVATION
 DATE STARTED 9/5/91
 DATE COMPLETED 9/5/91

PLATE

A-3