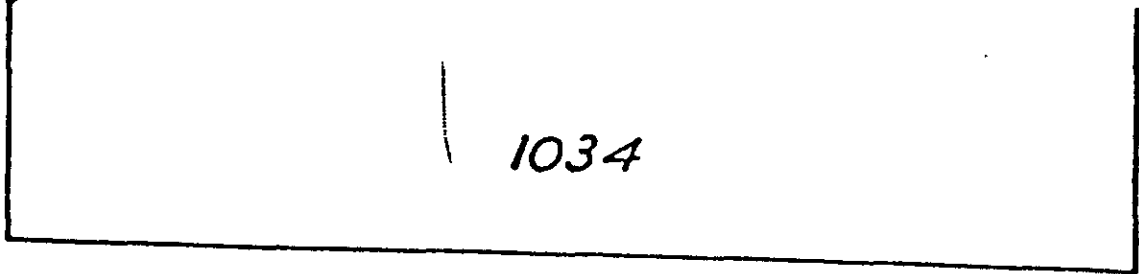


MAP OF PART OF PLOT 6 KELLERSBERGERS SURVEY OF PERALTA RANCHOS (Blk. 19 Pgs. 68) EMERVILLE

Scale: 1" = 40'



PARK AVENUE

80

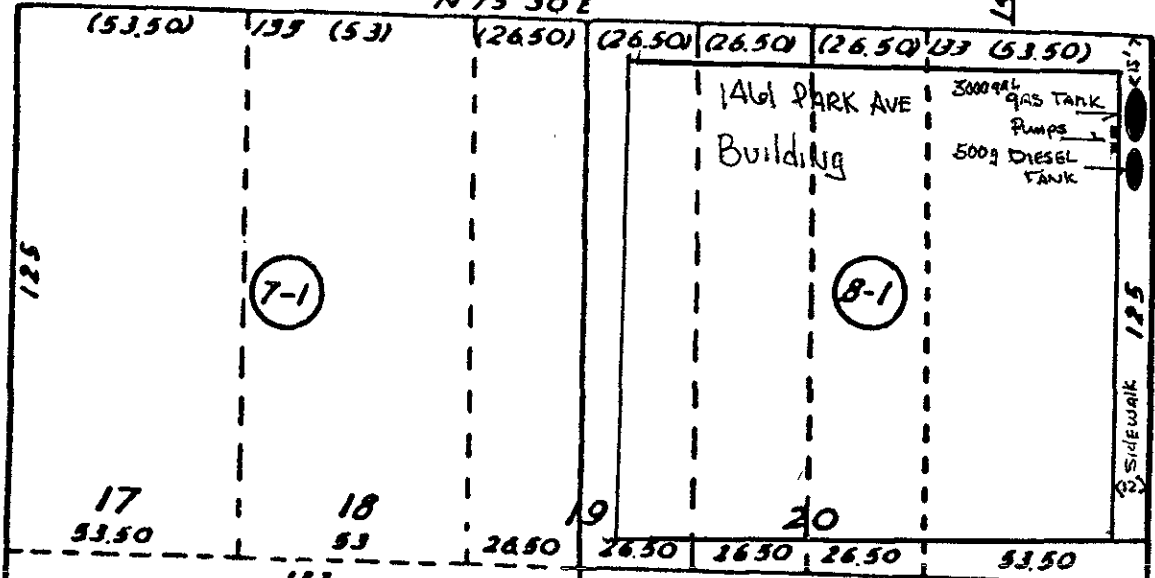
1485

1461

N 75° 30' E



60



HUBBARD STREET

STORM SEWER

HORTON STREET

HUBBARD

HORTON

4070

N 14° 30' W

275

EMERYVILLE

HORTON ST

HUBBARD ST

HALLECK ST

RAILROAD TRACKS

30TH ST

15TH ST

HOLLIS

WILSON ST

HULL ST

HOLDEN

VERBA

WATSON

HARLAN

EMERY

EMERY

EMERY

EMERY

EMERY

EMERY

EMERY

EMERY

STEEL FENCE

OPEN FIELD

EMERY

EMERY

EMERY

EMERY

EMERY

EMERY

EMERY

EMERY

EMERY

EMERY

EMERY

EMERY

EMERY

EMERY

EMERY

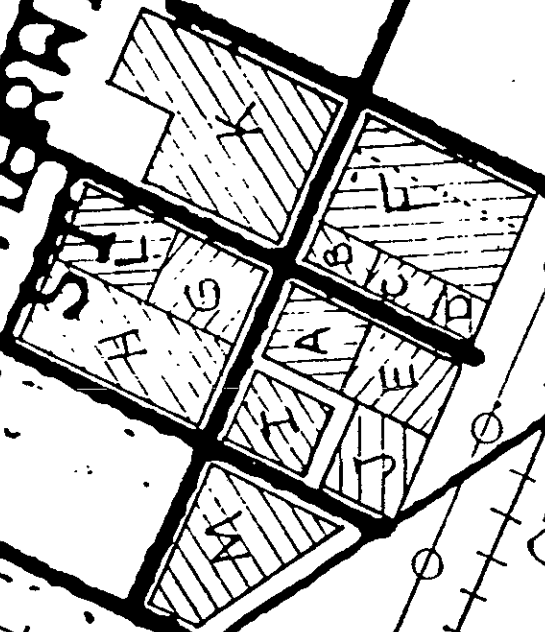
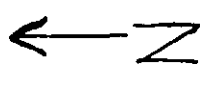
EMERY

EMERY

EMERY

580

80



<u>LETTER</u>	<u>BUSINESS NAME</u>	<u>TYPE OF BUSINESS</u>	<u># OF STORIES</u>
A	Modine		1 story
B	Krist Gudnason, Inc.	Sell clothing mat'l	1 story
C		Crematorium	Cz 2 story
D	Pals Plywood & Lumber Sales		1 story
E	Bon Motif Co.	Sell copper	1 story
F	Electo Coatings	Metal plating	2 story
G	Interior Motion	Furniture Warehouse	2 story
H	Economy Bindery Company	Print/Bind books, magazines	2 story
I	Hallenbeck & Associates	Int'l food wholesalers	2 story
J	Espresso Roma	Roast coffee	1 story
K	Charles Lowe Co/Chromex	Machine works	3 story
L	Chemical Warehouse	Chiron	2 story
M	Timco	Microfilm services	1 story

PARK AVE.



108'

28'

SHIPPING & RECEIVING

OFFICE SPACE



10' DOORS

125'

97'



ROOF CROSS-SECTION

28'

MAX HEIGHT

HORTON ST.



B C D E F G H I



103'

131'



EMERYVILLE BRANCH HAZARDOUS MATERIAL STORAGE LOCATIONS

<u>PART NAME</u>	<u>PART NUMBER</u>
A. FUEL TANK LINER	238-03
B. BLACK GLOSS PAINT	150-03
C. BOILOUT COMPOUND	98-50
D. BOILOUT COMPOUND	33-01
E. SOLDERING SALTS	36-04
F. POWDER FLUX	31-04
G. HYDROCHLORIC ACID MIXTURE	25-04
H. INORGANIC ACID	L-32
I. SOLVENT DEGREASER	L-11
J. SPILL CLEAN-UP KIT	

STID 385

HOLDEN

STREET

ELECTRO-COATINGS INC.

MW11

MW12

MW9

MW10

MW13

(*) - Soil data
(*) - Groundwater data

(15 ft)

E, T, g = ND
B = 0.04 ppm (10 ft)
= .03 ppm (10 ft)

g, E = ND
B = 1.9 ppb
T = 11 ppb (5 ft)

(10 ft)

HORTON STREET

MW2

150 ppm gal
5 ppm B
3.1 T
4.9 E

ND, g, T, XE
B = 0.093 ppm

PARK

TRUST PROPERTY

g = 1,200 ppm
B = 209 ppb
T = 33.7 ppb
E = 5.4 ppb
X = 12 ppb
ND = g, T, XE
B = 5.1 ppb

MW3

g, T, XE = ND
B = 0.0051 ppm (5 ft)
= ND (10 ft)

MW6

STREET

Well locations are approximate

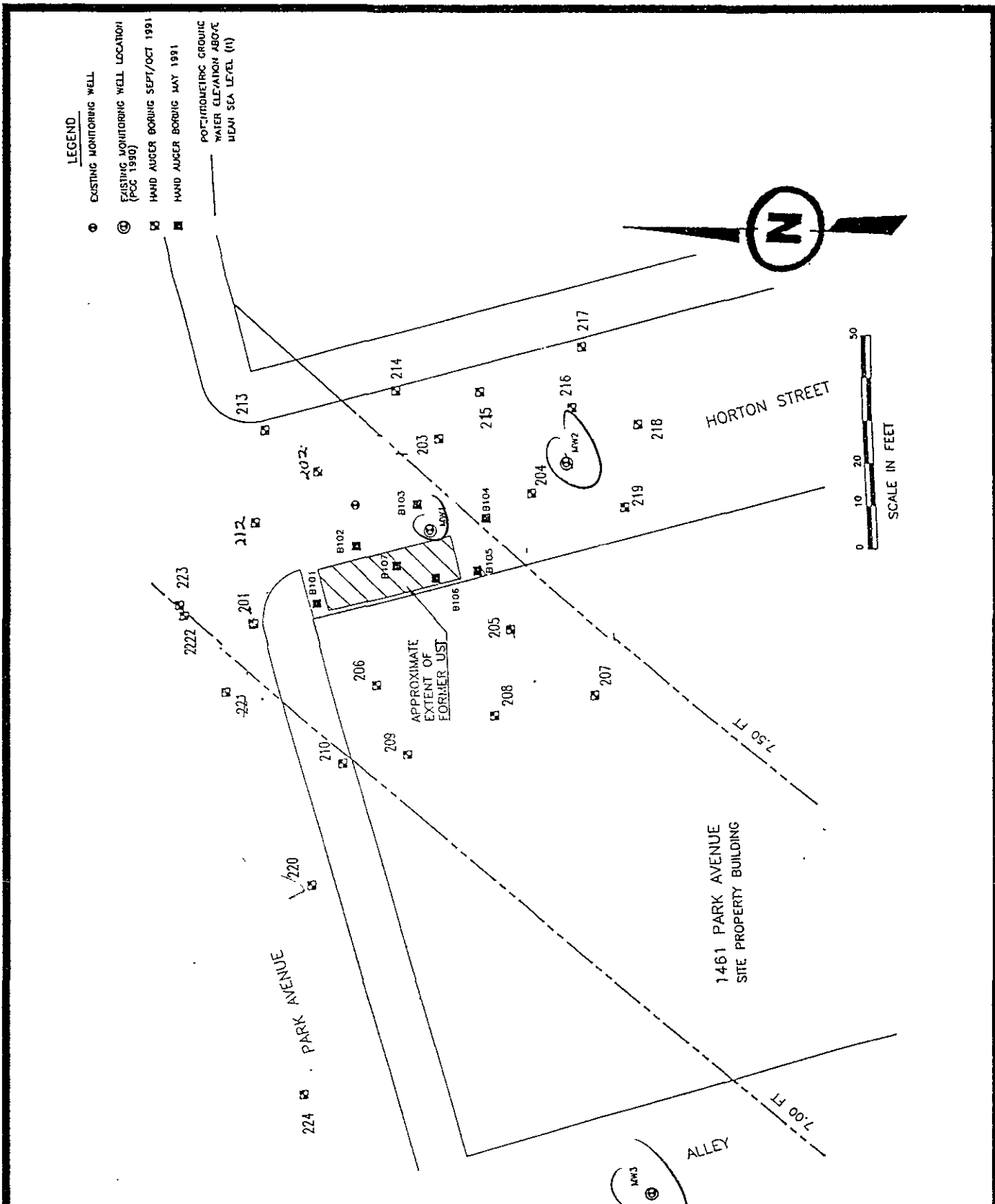
Blakely Environmental Inc.
320 S. Milliken Ave. Suite A
Ontario, CA 91761

Offsite Well Locations
Watson Trust
1461 Park Avenue
Emeryville, California

FIGURE: 2A

March 1995

OTD 385



Blakely Environmental Inc.
 320 S. Milliken Ave. Suite A
 Ontario, CA 91761

Site Layout Map
 Watson Trust
 1461 Park Avenue
 Emeryville, California

FIGURE: 2

March 1995