



3164 Gold Camp Drive
Suite 200
Rancho Cordova, CA 95670-6021
U.S.A.
916/638-2085
FAX: 916/638-8385

July 31, 2000

9/1/00

Why no analysis for MTBE in SV
Samples?

Ms. Eva Chu
Alameda County
Environmental Health Department
470 27th Street, Room 322
Oakland, CA 94612

12/1/00

Should have rec'd 3rd qtr - Sent
Nov 17 per J. Aldridge

No.

Subject: *Quarterly Ground Water Monitoring and
Remediation System Status Report, Second Quarter 2000*
Beacon Station No. 721
44 Lewelling Boulevard
San Lorenzo, California
Delta Project No. D193-936

Mike Banning

Dear Ms. Chu:

This report describes quarterly ground water monitoring and remediation system activities conducted during the **Second Quarter 2000**. The interpretations contained in this report represent our professional opinions and are based, in part, on information supplied by the client. These opinions are based on currently available information and are arrived at in accordance with currently accepted hydrogeologic and engineering practices at this time and location. Other than this, no warranty is implied or intended.

If you have any questions concerning this project, please contact Richard Munsch at (916) 638-2164.

Rmunsch@deltaenv.com.

DELTA ENVIRONMENTAL CONSULTANTS, INC.

Trevor L. Atkinson
Project Engineer

Richard D. Munsch
Project Manager

Steven W. Meeks, P.E.
California Registered Civil Engineer No. C057461



TLA (LRP023.936.DOC)

cc: Mr. Joe Aldridge - Ultramar Inc. 559/583-3231
Mr. Steven Ritchie - California Regional Water Quality Control Board
San Francisco Bay Region

STATUS OF GROUND WATER MONITORING

Delta Environmental Consultants, Inc. (Delta) has been authorized by Ultramar Inc. to perform quarterly ground water monitoring and remediation system oversight for the subject site. This report describes quarterly ground water monitoring and remediation system status for the **Second Quarter 2000**.

Cumulative ground water sampling information is summarized in Table 1. A site location map, site detail map, ground water elevation map and benzene concentration map are shown on Figures 1 through 4, respectively.

Work Performed during the Second Quarter 2000:

- Performed ground water sampling on **June 12, 2000**

SECOND QUARTER 2000 GROUND WATER MONITORING RESULTS:

Monitoring Well	Date	Depth to Groundwater (feet)	Ground Water Elevation (ft amsl)	Benzene (µg/L)	Toluene (µg/L)	Ethyl-benzene (µg/L)	Total Xylenes (µg/L)	TPH as gasoline (µg/L)	MTBE [8260] (µg/L)
MW-1	06/12/00	15.23	28.44	1.3	<1.0	<1.0	<1.0	190	640
MW-2	06/12/00	14.50	28.59	<20	<20	<20	<20	<2,000	53,000
MW-3	06/12/00	14.31	28.79	100	6.2	20	25	920	76
MW-4	06/12/00	16.26	28.40	<20	<20	<20	<20	<2,000	17,000
MW-5	06/12/00	15.08	28.71	NS	NS	NS	NS	NS	NS
MW-6	06/12/00	13.69	28.78	NS	NS	NS	NS	NS	NS
MW-7	06/12/00	13.28	28.26	NS	NS	NS	NS	NS	NS
MW-8	06/12/00	14.19	28.07	NS	NS	NS	NS	NS	NS
MW-9	06/12/00	16.70	28.24	NS	NS	NS	NS	NS	NS
MW-10	06/12/00	14.42	27.92	4.3	47	370	210	7,200	270
MW-11	06/12/00	17.44	27.56	<0.5	<0.5	<0.5	<0.5	52	49
RW-1	06/12/00	13.65	29.52	<0.5	<0.5	<0.5	1.0	<50	40

µg/L = micrograms per liter; NS = Not Sampled; ft amsl = feet above mean sea level

END OF SECTION

STATUS OF REMEDIATION SYSTEM

Operation and maintenance is performed bi-monthly on a remediation system consisting of ground water treatment, soil vapor extraction (SVE) and air sparging components. Details of system performance and cumulative totals are tabulated in Tables 2 through 4. A process flow diagram showing details of the system is shown as Figure 5.

Operation & Maintenance Site Visits:

- Operation and maintenance site visits were conducted for the **Second Quarter 2000** on:
 - **April 3 through 7, 12, 13 and 27, 2000**
 - **May 10 and 24, 2000**
 - **June 8 and 20, 2000**

Ground Water Extraction System Performance:

- The Ground Water Treatment System operated intermittently during the **Second Quarter 2000**.
- During the **Second Quarter 2000**, the ground water system processed **6,559** gallons. As of **June 20, 2000**, the ground water system has processed approximately **189,652** gallons.
- Prior to the **April 12, 2000** site visit, the field technician discovered the system piping had been damaged and had tripped a switch. The ground water system was restarted after the system was repaired.

Soil Vapor Extraction System Performance:

- The SVE system operated intermittently during the **Second Quarter 2000**.
- During the **Second Quarter 2000**, the SVE system removed **3.1** pounds of vapor equivalent gasoline. As of **June 8, 2000**, the SVE system has removed approximately **3.1** pounds (**0.5** gallons) of vapor equivalent gasoline.
- During the **April 3 through 7, 2000** site visits, the SVE system was restarted. Daily PID readings were taken from the system and submitted to the agency. Approval was given to reduce the sampling frequency from daily to biweekly on **April 7, 2000**.

Air Sparging System Performance:

- The Air Sparging system operated intermittently through the **Second Quarter 2000**.
- During the **April 27, 2000** site visit, the system was down due to compressor failure. The system will be restarted after the compressor is replaced.

END OF SECTION

CONCLUSIONS/RECOMMENDATIONS

Delta recommends continued operation of the remediation system and quarterly ground water monitoring.

Enclosures:

- Enclosure A: Site Background Information
- Enclosure B: Ground Water Sampling Information
- Enclosure C: Copy of Groundwater Sampling Frequency Letter
- Enclosure D: Ground Water Monitoring Analytical Results
- Enclosure E: Ground Water Treatment System Analytical Results
- Enclosure F: Soil Vapor Extraction System Analytical Results

END OF SECTION

TABLE 1

GROUND WATER MONITORING DATA

Beacon Station No. 721
44 Lewelling Boulevard
San Lorenzo, California

Monitoring Well	Date	Top of Riser Elevation (ft)	Depth to Water (ft)	Ground Water Elevation (ft)	Benzene (µg/L)	Toluene (µg/L)	Ethyl-benzene (µg/L)	Total Xylenes (µg/L)	TPH as gasoline (µg/L)	MTBE (µg/L)	Comments
MW-1	02/18/92	43.67	16.42	27.25	NS	NS	NS	NS	NS	NS	
	05/14/92		17.28	26.39	NS	NS	NS	NS	NS	NS	
	05/15/92		NM	NC	2,000	47	1,200	400	41,000	NA	
	08/27/92		19.48	24.19	NS	NS	NS	NS	NS	NS	
	08/28/92		NM	NC	3,800	54	850	970	110,000	NA	
	11/19/92		20.57	23.10	200	<5.0	90	140	3,600	NA	
	02/03/93		15.91	27.76	180	22	79	130	3,000	NA	
	06/23/93		16.21	27.46	2,400	74	650	510	12,000	NA	No free product or sheen
	09/22/93		17.85	25.82	3,000	290	1,100	1,200	23,000	NA	No free product or sheen
	01/24/94		17.91	25.76	2,400	280	1,100	1,700	18,000	NA	
	04/07/94		16.94	26.73	4,200	820	1,600	2,100	20,000	NA	No free product or sheen
	06/07/94		17.20	26.47	1,800	510	1,100	1,600	26,000	NA	No free product or sheen
	09/28/94		18.73	24.94	1,700	210	970	870	18,000	NA	No free product or sheen
	12/14/94		17.56	26.11	4,400	2,400	2,300	4,300	31,000	NA	Product sheen
	03/15/95		14.92	28.75	830	310	840	1,200	17,000	NA	Product sheen
	06/13/95		15.38	28.29	1,300	99	1,500	1,100	22,000	NA	No free product or sheen
	09/28/95		16.75	26.92	580	<25	780	410	8,800	NA	No free product or sheen
	12/28/95		17.28	26.39	4.9	<1.3	<1.3	290	4,800	74	No free product or sheen
	01/30/96		NM	NC	17	7.1	20	45	1,500	63	Not measured
	03/12/96		14.13	29.54	<0.5	<0.5	<0.5	<0.5	110	44	No free product or sheen
	06/11/96		14.90	28.77	48	0.9	37	26	600	75	No free product or sheen
	10/02/96		16.31	27.36	16	<0.5	6	0.92	210	11	No free product or sheen
	01/28/97		12.99	30.68	<0.5	<0.5	<0.5	<0.5	150	160	No free product or sheen
	05/20/97		15.28	28.39	<2.5	<2.5	<2.5	<2.5	680	640	No free product or sheen
	08/18/97		16.74	26.93	<2.5	<2.5	<2.5	<2.5	<250	540	No free product or sheen
	09/29/97		NM	NC	NS	NS	NS	NS	NS	NS	Not measured
	11/05/97		17.45	26.22	2.8	<2.5	<2.5	<2.5	<250	400/390 ^b	No free product or sheen
	03/31/98		12.47	31.20	260	13	110	150	3,300	7,900	No free product or sheen
	05/26/98		13.69	29.98	NS	NS	NS	NS	NS	NS	No free product or sheen

TABLE 1

GROUND WATER MONITORING DATA

Beacon Station No. 721
44 Lewelling Boulevard
San Lorenzo, California

Monitoring Well	Date	Top of Riser Elevation (ft)	Depth to Water (ft)	Ground Water Elevation (ft)	Benzene (µg/L)	Toluene (µg/L)	Ethyl-benzene (µg/L)	Total Xylenes (µg/L)	TPH as gasoline (µg/L)	MTBE (µg/L)	Comments
MW-1	05/28/98	43.67	NM	NC	120	<10	39	55	7,800	9,300	No free product or sheen
(Cont.)	08/19/98		14.58	29.09	12	<2.5	6.0 ^c	3.8 ^c	<250 ^c	2,200	No free product or sheen
	11/17/98		15.39	28.28	8.3	<2.5	9.2	7.6	860	4,200	No free product or sheen
	02/18/99		13.52	30.15	2.7	<2.5	<2.5	3.9	310	4,200	No free product or sheen
	06/24/99		15.02	28.65	10	<2.5	12	6.5	860	3,400	No free product or sheen
	08/30/99		15.87	27.80	2.0	<0.5	3.9	2.0	140	2,800	No free product or sheen
	11/09/99		16.65	27.02	<0.5	<0.5	3.1	2.0	170	1,500	No free product or sheen
	03/22/00		13.96	29.71	2.8	<2.0	3.6	<2.0	<200	1,200	No free product or sheen
	06/12/00		15.23	28.44	1.3	<1.0	<1.0	<1.0	190	640	No free product or sheen

TABLE 1

GROUND WATER MONITORING DATA

Beacon Station No. 721
44 Lewelling Boulevard
San Lorenzo, California

Monitoring Well	Date	Top of Riser Elevation (ft)	Depth to Water (ft)	Ground Water Elevation (ft)	Benzene (µg/L)	Toluene (µg/L)	Ethyl-benzene (µg/L)	Total Xylenes (µg/L)	TPH as gasoline (µg/L)	MTBE (µg/L)	Comments
MW-2	02/18/92	43.09	16.65	26.44	<0.5	<0.5	1.9	<0.5	1,600	NA	
	05/14/92		16.64	26.45	1.2	1	1.3	<0.5	740	NA	
	08/27/92		16.61	26.28	6.5	1.1	0.6	<0.5	1,400	NA	
	11/19/92		19.91	23.18	<0.5	<0.5	2.7	<0.5	360	NA	
	02/03/93		15.23	27.86	1.2	1.6	4.5	6.4	590	NA	
	06/23/93		15.55	27.54	<0.5	<0.5	0.52	0.5	160	NA	No free product or sheen
	09/22/93		17.22	25.87	<0.5	0.59	1.2	0.59	290	NA	No free product or sheen
	01/24/94		17.20	25.89	<0.5	<0.5	0.68	<0.5	330	NA	
	04/07/94		16.26	26.83	<0.5	<0.5	<0.5	4.4	490	NA	No free product or sheen
	06/07/94		16.46	26.63	<0.5	<0.5	1.5	<0.5	550	NA	No free product or sheen
	09/28/94		18.06	25.03	<0.5	<0.5	<0.5	<0.5	190	NA	No free product or sheen
	12/14/94		16.86	26.23	7.2	0.84	<0.5	<0.5	1,400	NA	No free product or sheen
	03/15/95		14.08	29.01	39	<0.5	0.53	<0.5	730	NA	No free product or sheen
	06/13/95		14.67	28.42	8.3	<0.5	<0.5	<0.5	750 ^a	NA	No free product or sheen
	09/28/95		16.07	27.02	<0.5	<0.5	<0.5	<0.5	670 ^a	NA	No free product or sheen
	12/28/95		16.46	26.63	9.5	<5.0	<5.0	5.2	3,100	4,600	No free product or sheen
	03/12/96		13.11	29.98	<1.3	<1.3	<1.3	<1.3	710	3,200	No free product or sheen
	06/11/96		14.14	28.95	1.6	<1.3	<1.3	<1.3	1,900 ^a	5,100	No free product or sheen
	10/02/96		15.71	27.38	<2.5	<2.5	<2.5	<2.5	2,800	7,900	No free product or sheen
	01/28/97		12.05	31.04	<0.5	<0.5	<0.5	<0.5	130	210	No free product or sheen
	05/20/97		14.65	28.44	120	16	<2.5	4.0	1,400	390	No free product or sheen
	08/18/97		16.00	27.09	<2.5	<2.5	<2.5	<2.5	<250	2,000	No free product or sheen
	09/29/97		NM	NC	NS	NS	NS	NS	NS	NS	Not measured
	11/05/97		16.75	26.34	<2.5	<2.5	<2.5	<2.5	<250	2,900/2,900 ^b	No free product or sheen
	03/31/98		11.54	31.55	<0.5	<0.5	<0.5	<0.5	<10,000	85,000	No free product or sheen
	05/26/98		12.78	30.31	NS	NS	NS	NS	NS	NS	No free product or sheen
	05/28/98		NM	NC	<500	<500	<500	<500	<50,000	97,000	No free product or sheen
	08/19/98		14.40	28.69	<0.5	<0.5	<0.5	<0.5	210	22,000	No free product or sheen
	11/17/98		15.18	27.91	<0.5	<0.5	<0.5	<0.5	<50	17,000	No free product or sheen

TABLE 1

GROUND WATER MONITORING DATA

Beacon Station No. 721
 44 Lewelling Boulevard
 San Lorenzo, California

Monitoring Well	Date	Top of Riser Elevation (ft)	Depth to Water (ft)	Ground Water Elevation (ft)	Benzene (µg/L)	Toluene (µg/L)	Ethyl-benzene (µg/L)	Total Xylenes (µg/L)	TPH as gasoline (µg/L)	MTBE (µg/L)	Comments
MW-2	02/18/99	43.09	14.07	29.02	<0.5	<0.5	<0.5	<0.5	<50	13,000	No free product or sheen
(Cont.)	06/24/99		14.70	28.39	<15	<0.5	<0.5	<0.5	180	39,000	No free product or sheen
	08/30/99		15.46	27.63	<25	<25	<25	<25	<2,500	18,000	No free product or sheen
	11/09/99		16.03	27.06	<5.0	<5.0	<5.0	<5.0	<500	14,000	No free product or sheen
	03/22/00		13.05	30.04	<5.0	<5.0	<5.0	<5.0	<500	54,000	No free product or sheen
	06/12/00		14.50	28.59	<20	<20	<20	<20	<2,000	53,000	No free product or sheen

TABLE 1

GROUND WATER MONITORING DATA

Beacon Station No. 721
44 Lewelling Boulevard
San Lorenzo, California

Monitoring Well	Date	Top of Riser Elevation (ft)	Depth to Water (ft)	Ground Water Elevation (ft)	Benzene (µg/L)	Toluene (µg/L)	Ethyl-benzene (µg/L)	Total Xylenes (µg/L)	TPH as gasoline (µg/L)	MTBE (µg/L)	Comments
MW-3	02/18/92	43.10	16.89	26.21	NS	NS	NS	NS	NS	NS	
	05/14/92		16.60	26.50	NS	NS	NS	NS	NS	NS	
	05/15/92		NM	NC	6,300	5,900	1,700	6,100	160,000	NA	
	08/27/92		18.96	24.14	NS	NS	NS	NS	NS	NS	
	08/28/92		NM	NC	2,500	40,000	6,700	44,000	1,300,000	NA	
	11/18/92		20.38	23.01	NS	NS	NS	NS	NS	NS	
	11/19/92		NM	NC	NS	NS	NS	NS	NS	NS	
	02/03/93		15.43	27.67	7,200	11,000	2,900	13,000	82,000	NA	
	06/23/93		15.67	27.43	3,200	5,300	2,500	9,100	61,000	NA	Product sheen
	09/22/93		17.20	25.90	12,000	14,000	3,900	18,000	94,000	NA	No free product or sheen
	01/24/94		17.35	25.75	14,000	17,000	4,200	14,000	110,000	NA	
	04/07/94		14.48	28.62	6,500	1,800	1,700	4,100	28,000	NA	No free product or sheen
	06/07/94		13.37	29.73	6,400	2,300	1,500	3,500	27,000	NA	Product sheen
	09/28/94		18.05	25.05	7,400	4,300	1,500	4,600	40,000	NA	No free product or sheen
	12/14/94		16.92	26.18	17,000	21,000	3,900	22,000	140,000	NA	Product sheen
	03/15/95		14.22	28.88	4,900	1,900	1,800	7,100	58,000	NA	Product sheen
	06/13/95		14.49	28.61	7,200	2,900	1,200	4,600	44,000	NA	Product sheen
	09/28/95		15.17	27.93	5,600	2,100	1,900	6,900	30,000	NA	No free product or sheen
	12/28/95		15.45	27.65	32	5.8	18	4,700	16,000	360	No free product or sheen
	01/30/96		NM	NC	850	800	190	1,700	8,700	430	Not measured
	03/12/96		11.35	31.75	48	64	5.3	630	2,400	97	No free product or sheen
	06/11/96		Dry	Dry	NS	NS	NS	NS	NS	NS	Dry
	10/02/96		Dry	Dry	NS	NS	NS	NS	NS	NS	Dry
	01/28/97		Dry	Dry	NS	NS	NS	NS	NS	NS	Dry
	05/20/97		Dry	Dry	NS	NS	NS	NS	NS	NS	Plugged at 14 feet
	07/10/97		NM	NC	<0.50	<0.50	<0.50	4.8	300	40	Not measured
	08/18/97		16.05	27.05	480	8.4	100	230	3,600	170	No free product or sheen
	09/29/97		NM	NC	740	8.6	160	240	3500	210	Not measured
	11/05/97		16.78	26.32	870	15	180	210	4,100	240/210 ^b	No free product or sheen

TABLE 1

GROUND WATER MONITORING DATA

Beacon Station No. 721
 44 Lewelling Boulevard
 San Lorenzo, California

Monitoring Well	Date	Top of Riser Elevation (ft)	Depth to Water (ft)	Ground Water Elevation (ft)	Benzene (µg/L)	Toluene (µg/L)	Ethyl-benzene (µg/L)	Total Xylenes (µg/L)	TPH as gasoline (µg/L)	MTBE (µg/L)	Comments
MW-3	03/31/98	43.10	11.55	31.55	1,800	600	410	1,400	12,000	510	No free product or sheen
(Cont.)	05/26/98		12.80	30.30	NS	NS	NS	NS	NS	NS	No free product or sheen
	05/28/98		NM	NC	1,500	400	280	870	6,500	480	No free product or sheen
	08/19/98		14.27	28.83	130	11	24	60	1,400	140	No free product or sheen
	11/17/98		15.11	27.99	48	3.5	9.9	14	510	120	No free product or sheen
	02/18/99		13.30	29.80	67	28	24	81	690	88	No free product or sheen
	06/24/99		14.44	28.66	27	21	8.6	32	540	61	No free product or sheen
	08/30/99		15.05	28.05	12	12	3.2	13	250	50	No free product or sheen
	11/09/99		15.72	27.38	9.8	5.3	3.4	10	230	48	No free product or sheen
	03/22/00		13.21	29.89	180	47	46	100	1,500	80	No free product or sheen
	06/12/00		14.31	28.79	100	6.2	20	25	920	76	No free product or sheen

TABLE 1

GROUND WATER MONITORING DATA

Beacon Station No. 721
44 Lewelling Boulevard
San Lorenzo, California

Monitoring Well	Date	Top of Riser Elevation (ft)	Depth to Water (ft)	Ground Water Elevation (ft)	Benzene (µg/L)	Toluene (µg/L)	Ethyl-benzene (µg/L)	Total Xylenes (µg/L)	TPH as gasoline (µg/L)	MTBE (µg/L)	Comments
MW-4	02/18/92	44.66	18.51	26.15	<0.5	<0.5	12	21	5,100	NA	
	05/14/92		18.22	26.44	<0.5	5.6	1.8	2.2	4,600	NA	
	08/27/92		20.47	24.19	NS	NS	NS	NS	NS	NS	
	08/28/92		NM	NC	6.6	1.3	1.6	3.1	1,700	NA	
	11/19/92		21.58	23.08	<0.5	<0.5	<0.5	<0.5	400	NA	
	02/03/93		16.98	27.68	<0.5	<0.5	<0.5	<0.5	1,100	NA	
	06/23/93		17.23	27.43	<0.5	<0.5	<0.5	<0.5	120	NA	No free product or sheen
	09/22/93		18.83	25.83	<0.5	<0.5	<0.5	<0.5	110	NA	No free product or sheen
	01/24/94		18.86	25.80	<0.5	<0.5	<0.5	<0.5	260	NA	
	04/07/94		17.90	26.76	<0.5	<0.5	<0.5	<0.5	430	NA	No free product or sheen
	06/07/94		18.08	26.58	<0.5	<0.5	<0.5	<0.5	150	NA	No free product or sheen
	09/28/94		19.70	24.96	<0.5	<0.5	<0.5	<0.5	75	NA	No free product or sheen
	12/14/94		18.55	26.11	<0.5	<0.5	<0.5	<0.5	160	NA	No free product or sheen
	03/15/95		16.14	28.52	<0.5	<0.5	<0.5	<0.5	500	NA	No free product or sheen
	06/13/95		16.41	28.25	<0.5	<0.5	<0.5	<0.5	210 ^a	NA	No free product or sheen
	09/28/95		17.88	26.78	<0.5	<0.5	<0.5	<0.5	140 ^a	NA	No free product or sheen
	12/28/95		17.81	26.85	<0.5	<0.5	<0.5	<0.5	510 ^a	<5.0	No free product or sheen
	03/12/96		14.77	29.89	<0.5	<0.5	<0.5	<0.5	<50	<5.0	No free product or sheen
	06/11/96		15.88	28.78	<0.5	<0.5	<0.5	<0.5	50 ^a	<5.0	No free product or sheen
	10/02/96		17.40	27.26	<0.5	<0.5	<0.5	<0.5	<50	<5.0	No free product or sheen
	01/28/97		14.11	30.55	<0.5	<0.5	<0.5	<0.5	270 ^a	<5.0	No free product or sheen
	05/20/97		16.24	28.42	<0.5	<0.5	<0.5	<0.5	<50	<5.0	No free product or sheen
	08/18/97		17.59	27.07	<0.5	<0.5	<0.5	<0.5	<50	<5.0	No free product or sheen
	09/29/97		NM	NC	NS	NS	NS	NS	NS	NS	Not measured
	11/05/97		18.24	26.42	<0.5	<0.5	<0.5	<0.5	<50	<5.0/<0.5 ^b	No free product or sheen
	03/31/98		13.61	31.05	<0.5	<0.5	<0.5	<0.5	110	<5.0	No free product or sheen
	05/26/98		14.78	29.88	NS	NS	NS	NS	NS	NS	No free product or sheen
	05/28/98		NM	NC	<0.5	<0.5	<0.5	<0.5	94	<5.0	No free product or sheen
	08/19/98		16.15	28.51	<0.5 ^c	<0.5 ^c	<0.5 ^c	<0.5 ^c	120 ^c	46 ^c	No free product or sheen

TABLE 1

GROUND WATER MONITORING DATA

Beacon Station No. 721
 44 Lewelling Boulevard
 San Lorenzo, California

Monitoring Well	Date	Top of Riser Elevation (ft)	Depth to Water (ft)	Ground Water Elevation (ft)	Benzene (µg/L)	Toluene (µg/L)	Ethyl-benzene (µg/L)	Total Xylenes (µg/L)	TPH as gasoline (µg/L)	MTBE (µg/L)	Comments
MW-4 (Cont.)	11/17/98	44.66	16.93	27.73	1.3	<0.5	<0.5	<0.5	<50	780	No free product or sheen
	02/18/99		15.30	29.36	8.2	<0.5	<0.5	<0.5	130	240	No free product or sheen
	06/24/99		16.35	28.31	<1.0	<0.5	<0.5	<0.5	<50	2,100	No free product or sheen
	08/30/99		17.12	27.54	NS	NS	NS	NS	NS	NS	Not sampled
	11/09/99		17.60	27.06	<0.5	<0.5	<0.5	<0.5	<50	2,500	No free product or sheen
	03/22/00		14.98	29.68	<0.5	<0.5	<0.5	<0.5	69	12,000	No free product or sheen
	06/12/00		16.26	28.40	<20	<20	<20	<20	<2,000	17,000	No free product or sheen

TABLE 1

GROUND WATER MONITORING DATA

Beacon Station No. 721
44 Lewelling Boulevard
San Lorenzo, California

Monitoring Well	Date	Top of Riser Elevation (ft)	Depth to Water (ft)	Ground Water Elevation (ft)	Benzene (µg/L)	Toluene (µg/L)	Ethyl-benzene (µg/L)	Total Xylenes (µg/L)	TPH as gasoline (µg/L)	MTBE (µg/L)	Comments
MW-5	02/18/92	43.79	17.37	26.42	<0.5	<0.5	<0.5	<0.5	<50	NA	
	05/14/92		17.29	26.50	<0.5	<0.05	<0.5	<0.5	<50	NA	
	08/27/92		22.18	21.61	<0.5	<0.5	<0.5	<0.5	<50	NA	
	11/19/92		20.68	23.11	<0.5	<0.5	<0.5	<0.5	<50	NA	
	02/03/93		15.91	27.88	3.0	2.7	8.0	9.9	55	NA	
	06/23/93		16.24	27.55	<0.5	<0.5	<0.5	<0.5	<50	NA	No free product or sheen
	09/22/93		17.93	25.86	0.66	1.1	<0.5	0.6	<50	NA	No free product or sheen
	01/24/94		17.82	25.97	<0.5	<0.5	<0.5	<0.5	<50	NA	
	04/07/94		16.91	26.88	<0.5	<0.5	<0.5	<0.5	<50	NA	No free product or sheen
	06/07/94		17.10	26.69	<0.5	<0.5	<0.5	<0.5	<50	NA	No free product or sheen
	09/28/94		18.73	25.06	<0.5	<0.5	<0.5	<0.5	<50	NA	No free product or sheen
	12/14/94		17.53	26.26	<0.5	<0.5	<0.5	<0.5	<50	NA	No free product or sheen
	03/15/95		14.96	28.83	<0.5	<0.5	<0.5	<0.5	<50	NA	No free product or sheen
	06/13/95		15.30	28.49	<0.5	0.52	<0.5	<0.5	<50	NA	No free product or sheen
	09/28/95		16.74	27.05	<0.5	<0.5	<0.5	<0.5	<50	NA	No free product or sheen
	12/28/95		15.10	28.69	<0.5	<0.5	<0.5	<0.5	120	<5.0	No free product or sheen
	03/12/96		13.67	30.12	<0.5	<0.5	<0.5	<0.5	<50	9	No free product or sheen
	06/11/96		14.88	28.91	<0.5	<0.5	<0.5	<0.5	<50	<5.0	No free product or sheen
	10/02/96		16.42	27.37	<0.5	<0.5	<0.5	<0.5	<50	<5.0	No free product or sheen
	01/28/97		12.83	30.96	<0.5	<0.5	<0.5	<0.5	<50	<5.0	No free product or sheen
	05/20/97		15.33	28.46	<0.5	<0.5	<0.5	<0.5	<50	<5.0	No free product or sheen
	08/18/97		16.69	27.10	<0.5	<0.5	<0.5	<0.5	<50	<5.0	No free product or sheen
	09/29/97		NM	NC	NS	NS	NS	NS	NS	NS	Not measured
	11/05/97		17.37	26.42	<0.5	<0.5	<0.5	<0.5	<50	<5.0/<0.5 ^b	No free product or sheen
	03/31/98		12.40	31.39	<0.5	<0.5	<0.5	<0.5	<50	<5.0	No free product or sheen
	05/26/98		13.62	30.17	NS	NS	NS	NS	NS	NS	No free product or sheen
	05/28/98		NM	NC	<0.5	<0.5	<0.5	<0.5	<50	<5.0	No free product or sheen
	08/19/98		15.19	28.60	<0.5	<0.5	<0.5	<0.5	<50	7	No free product or sheen
	11/17/98		15.89	27.90	<0.5	<0.5	<0.5	<0.5	<50	6	No free product or sheen

TABLE 1

GROUND WATER MONITORING DATA

Beacon Station No. 721
44 Lewelling Boulevard
San Lorenzo, California

Monitoring Well	Date	Top of Riser Elevation (ft)	Depth to Water (ft)	Ground Water Elevation (ft)	Benzene (µg/L)	Toluene (µg/L)	Ethyl-benzene (µg/L)	Total Xylenes (µg/L)	TPH as gasoline (µg/L)	MTBE (µg/L)	Comments
MW-5	02/18/99	43.79	14.23	29.56	<0.5	<0.5	<0.5	<0.5	<50	<5.0	No free product or sheen
(Cont.)	06/24/99		15.29	28.50	NS	NS	NS	NS	NS	NS	Not sampled
	08/30/99		16.07	27.72	NS	NS	NS	NS	NS	NS	Not sampled
	11/09/99		16.61	27.18	NS	NS	NS	NS	NS	NS	Not sampled
	03/22/00		13.81	29.98	<0.5	<0.5	<0.5	<0.5	<50	<5.0	No free product or sheen
	06/12/00		15.08	28.71	NS	NS	NS	NS	NS	NS	Not sampled

TABLE 1

GROUND WATER MONITORING DATA

Beacon Station No. 721
44 Lewelling Boulevard
San Lorenzo, California

Monitoring Well	Date	Top of Riser Elevation (ft)	Depth to Water (ft)	Ground Water Elevation (ft)	Benzene (µg/L)	Toluene (µg/L)	Ethyl-benzene (µg/L)	Total Xylenes (µg/L)	TPH as gasoline (µg/L)	MTBE (µg/L)	Comments
MW-6	02/18/92	42.47	15.87	26.60	4.8	<0.5	<0.5	<0.5	370	NA	
	05/14/92		16.04	26.43	<0.5	<0.5	<0.5	<0.5	120	NA	
	08/27/92		18.17	24.30	1.2	<0.5	<0.5	<0.5	<50	NA	
	11/19/92		19.30	23.17	1.3	<0.5	1	1.1	66	NA	
	02/03/93		14.60	27.87	1.9	2.6	23	12	100	NA	
	06/23/93		15.00	27.47	<0.5	<0.5	<0.5	<0.5	<50	NA	No free product or sheen
	09/22/93		16.66	25.81	2.2	3.8	0.53	2.7	81	NA	No free product or sheen
	01/24/94		16.52	25.95	<0.5	<0.5	<0.5	<0.5	98	NA	
	04/07/94		15.70	26.77	0.71	<0.5	<0.5	<0.5	150	NA	No free product or sheen
	06/07/94		15.88	26.59	<0.5	<0.5	<0.5	<0.5	180	NA	No free product or sheen
	09/28/94		17.51	24.96	<0.5	<0.5	<0.5	<0.5	100	NA	No free product or sheen
	12/14/94		16.27	26.20	<0.5	<0.5	<0.5	<0.5	140	NA	No free product or sheen
	03/15/95		13.52	28.95	<0.5	<0.5	<0.5	<0.5	110	NA	No free product or sheen
	06/13/95		13.96	28.51	<0.5	0.87	<0.5	<0.5	150 ^a	NA	No free product or sheen
	09/28/95		15.61	26.86	0.78	<0.5	<0.5	<0.5	<50	NA	No free product or sheen
	12/28/95		15.54	26.93	<0.5	<0.5	<0.5	6.3	410	70	No free product or sheen
	01/30/96		NM	NC	1.0	<0.5	<0.5	11	81	46	Not measured
	03/12/96		11.88	30.59	<0.5	<0.5	<0.5	<0.5	<50	7	No free product or sheen
	06/11/96		13.52	28.95	<0.5	<0.5	<0.5	<0.5	<50	<5.0	No free product or sheen
	10/02/96		15.10	27.37	<0.5	<0.5	<0.5	<0.5	<50	<5.0	No free product or sheen
	01/28/97		11.18	31.29	<0.5	<0.5	<0.5	<0.5	<50	<5.0	No free product or sheen
	05/20/97		14.00	28.47	<0.5	<0.5	<0.5	<0.5	<50	<5.0	No free product or sheen
	08/18/97		15.54	26.93	<0.5	<0.5	<0.5	<0.5	<50	<5.0	No free product or sheen
	09/29/97		NM	NC	NS	NS	NS	NS	NS	NS	Not measured
	11/05/97		16.25	26.22	<0.5	<0.5	<0.5	<0.5	<50	<5.0/2.8 ^b	No free product or sheen
	03/31/98		10.60	31.87	<0.5	<0.5	<0.5	<0.5	<50	<5.0	No free product or sheen
	05/26/98		12.01	30.46	NS	NS	NS	NS	NS	NS	No free product or sheen
	05/28/98		NM	NC	<0.5	<0.5	<0.5	<0.5	<50	<5.0	No free product or sheen
	08/19/98		13.60	28.87	<0.5	<0.5	<0.5	<0.5	<50	<5.0	No free product or sheen

TABLE 1

GROUND WATER MONITORING DATA

Beacon Station No. 721
 44 Lewelling Boulevard
 San Lorenzo, California

Monitoring Well	Date	Top of Riser Elevation (ft)	Depth to Water (ft)	Ground Water Elevation (ft)	Benzene (µg/L)	Toluene (µg/L)	Ethyl-benzene (µg/L)	Total Xylenes (µg/L)	TPH as gasoline (µg/L)	MTBE (µg/L)	Comments
MW-6	11/17/98	42.47	14.53	27.94	<0.5	<0.5	<0.5	<0.5	<50	<5.0	No free product or sheen
(Cont.)	02/18/99		12.39	30.08	<0.5	<0.5	<0.5	<0.5	<50	<5.0	No free product or sheen
	06/24/99		13.89	28.58	NS	NS	NS	NS	NS	NS	Not sampled
	08/30/99		14.75	27.72	NS	NS	NS	NS	NS	NS	Not sampled
	11/09/99		15.18	27.29	NS	NS	NS	NS	NS	NS	Not sampled
	03/22/00		12.30	30.17	<0.5	<0.5	<0.5	<0.5	<50	<5.0	No free product or sheen
	06/12/00		13.69	28.78	NS	NS	NS	NS	NS	NS	Not sampled

TABLE 1

GROUND WATER MONITORING DATA

Beacon Station No. 721
44 Lewelling Boulevard
San Lorenzo, California

Monitoring Well	Date	Top of Riser Elevation (ft)	Depth to Water (ft)	Ground Water Elevation (ft)	Benzene (µg/L)	Toluene (µg/L)	Ethyl-benzene (µg/L)	Total Xylenes (µg/L)	TPH as gasoline (µg/L)	MTBE (µg/L)	Comments
MW-7	02/18/92	41.54	15.51	26.03	16	<0.5	10	16	670	NA	
	05/14/92		15.41	26.13	44	<0.5	38	88	1,500	NA	
	08/27/92		17.45	24.09	400	5.8	290	1,400	23,000	NA	
	11/19/92		18.54	23.00	29	<0.5	10	53	330	NA	
	02/03/93		14.10	27.44	200	<0.5	110	480	2,000	NA	
	06/23/93		14.33	27.21	20	<0.5	16	16	280	NA	No free product or sheen
	09/22/93		15.92	25.62	71	2.2	33	210	860	NA	No free product or sheen
	01/24/94		16.07	25.47	61	<1.3	10	160	900	NA	
	04/07/94		15.10	26.44	53	<0.5	7.1	49	630	NA	
	06/07/94		15.16	26.38	55	<0.5	14	24	730	NA	No free product or sheen
	09/28/94		16.82	24.72	21	<0.5	2.3	3.1	300	NA	No free product or sheen
	12/14/94		15.75	25.79	19	<0.5	3.3	32	430	NA	No free product or sheen
	03/15/95		14.00	27.54	0.88	<0.5	<0.5	<0.5	70	NA	No free product or sheen
	06/13/95		13.44	28.10	7.3	0.79	7.6	8.9	190	NA	No free product or sheen
	09/28/95		14.84	26.70	1.5	<0.5	1.2	0.84	60	NA	No free product or sheen
	12/28/95		14.55	26.99	<0.5	<0.5	0.91	0.69	60	10	No free product or sheen
	03/12/96		11.88	29.66	<0.5	<0.5	<0.5	<0.5	<50	11	No free product or sheen
	06/11/96		13.52	28.58	<0.5	<0.5	<0.5	<0.5	79	16	No free product or sheen
	10/02/96		14.50	27.04	<0.5	<0.5	<0.5	<0.5	<50	26	No free product or sheen
	01/28/97		11.08	30.46	<0.5	<0.5	<0.5	<0.5	<50	13	No free product or sheen
	05/20/97		13.46	28.08	<0.5	0.85	<0.5	<0.5	78	40	No free product or sheen
	08/18/97		14.95	26.59	<0.5	<0.5	<0.5	<0.5	<50	18	No free product or sheen
	09/29/97		NM	NC	NS	NS	NS	NS	NS	NS	Not measured
	11/05/97		15.43	26.11	<0.5	<0.5	<0.5	<0.5	<50	8.9/8.0 ^b	No free product or sheen
	03/31/98		10.25	31.29	<0.5	<0.5	<0.5	1.3	<5.0	6	No free product or sheen
	05/26/98		11.45	30.09	NS	NS	NS	NS	NS	NS	No free product or sheen
	05/28/98		NM	NC	<0.5	<0.5	<0.5	<0.5	<50	10	No free product or sheen
	08/19/98		13.08	28.46	<0.5	<0.5	<0.5	<0.5	<50	27	No free product or sheen
	11/17/98		13.93	27.61	<0.5	<0.5	<0.5	<0.5	<50	30	No free product or sheen

TABLE 1

GROUND WATER MONITORING DATA

Beacon Station No. 721
 44 Lewelling Boulevard
 San Lorenzo, California

Monitoring Well	Date	Top of Riser Elevation (ft)	Depth to Water (ft)	Ground Water Elevation (ft)	Benzene (µg/L)	Toluene (µg/L)	Ethyl-benzene (µg/L)	Total Xylenes (µg/L)	TPH as gasoline (µg/L)	MTBE (µg/L)	Comments
MW-7	02/18/99	41.54	12.16	29.38	<0.5	<0.5	<0.5	<0.5	51	22	No free product or sheen
(Cont.)	06/24/99		13.35	28.19	NS	NS	NS	NS	NS	NS	Not sampled
	08/30/99		14.23	27.31	NS	NS	NS	NS	NS	NS	Not sampled
	11/09/99		14.60	26.94	<0.5	<0.5	<0.5	<0.5	<50	16	No free product or sheen
	03/22/00		11.91	29.63	<0.5	<0.5	<0.5	<0.5	<50	18	No free product or sheen
	06/12/00		13.28	28.26	NS	NS	NS	NS	NS	NS	Not sampled

TABLE 1

GROUND WATER MONITORING DATA

Beacon Station No. 721
44 Lewelling Boulevard
San Lorenzo, California

Monitoring Well	Date	Top of Riser Elevation (ft)	Depth to Water (ft)	Ground Water Elevation (ft)	Benzene (µg/L)	Toluene (µg/L)	Ethyl-benzene (µg/L)	Total Xylenes (µg/L)	TPH as gasoline (µg/L)	MTBE (µg/L)	Comments
MW-8	02/18/92	42.26	16.57	25.69	<0.5	<0.5	9.5	<0.5	1,200	NA	
	05/14/92		16.24	26.02	<0.5	<0.5	<0.5	<0.5	130	NA	
	08/27/92		18.28	23.98	<0.5	<0.5	<0.5	<0.5	140	NA	
	11/19/92		19.32	22.94	<0.5	<0.5	2.0	<0.5	320	NA	
	02/03/93		14.87	27.39	<0.5	<0.5	<0.5	<0.5	<50	NA	
	06/23/93		15.18	27.08	<0.5	<0.5	<0.5	<0.5	<50	NA	No free product or sheen
	09/22/93		18.79	23.47	<0.5	0.67	<0.5	<0.5	<50	NA	No free product or sheen
	01/24/94		17.06	25.20	<0.5	<0.5	<0.5	<0.5	290	NA	
	04/07/94		15.95	26.31	<0.5	<0.5	<0.5	<0.5	<50	NA	No free product or sheen
	06/07/94		15.10	27.16	<0.5	<0.5	<0.5	<0.5	<50	NA	No free product or sheen
	09/28/94		17.63	24.63	<0.5	<0.5	<0.5	<0.5	<50	NA	No free product or sheen
	12/14/94		16.66	25.60	<0.5	<0.5	<0.5	<0.5	<50	NA	No free product or sheen
	03/15/95		14.30	27.96	<0.5	<0.5	<0.5	<0.5	<50	NA	No free product or sheen
	06/13/95		14.37	27.89	<0.5	<0.5	<0.5	<0.5	<50	NA	No free product or sheen
	09/28/95		15.62	26.64	NS	NS	NS	NS	NS	NA	No free product or sheen
	12/28/95		15.62	26.64	<0.5	<0.5	<0.5	<0.5	<50	<5.0	No free product or sheen
	03/12/96		12.75	29.51	<0.5	<0.5	<0.5	<0.5	<50	<5.0	No free product or sheen
	06/11/96		13.94	28.32	<0.5	<0.5	<0.5	<0.5	<50	<5.0	No free product or sheen
	10/02/96		15.41	26.85	<0.5	<0.5	<0.5	<0.5	<50	<5.0	No free product or sheen
	01/28/97		12.30	29.96	<0.5	<0.5	<0.5	<0.5	<50	<5.0	No free product or sheen
	05/20/97		14.42	27.84	<0.5	<0.5	<0.5	<0.5	<50	<5.0	No free product or sheen
	08/18/97		16.16	26.10	<0.5	<0.5	<0.5	<0.5	<50	<5.0	No free product or sheen
	09/29/97		NM	NC	NS	NS	NS	NS	NS	NS	Not measured
	11/05/97		16.25	26.01	<0.5	<0.5	<0.5	<0.5	<50	<5.0/<0.5 ^b	No free product or sheen
	03/31/98		11.49	30.77	<0.5	<0.5	<0.5	<0.5	<50	<5.0	No free product or sheen
	05/26/98		12.60	29.66	NS	NS	NS	NS	NS	NS	No free product or sheen
	05/28/98		NM	NC	<0.5	<0.5	<0.5	<0.5	<50	<5.0	No free product or sheen
	08/19/98		14.15	28.11	<0.5	<0.5	<0.5	<0.5	<50	<5.0	No free Product or sheen
	11/17/98		14.98	27.28	<0.5	<0.5	<0.5	<0.5	<50	<5.0	No free product or sheen

TABLE 1

GROUND WATER MONITORING DATA

Beacon Station No. 721
 44 Lewelling Boulevard
 San Lorenzo, California

Monitoring Well	Date	Top of Riser Elevation (ft)	Depth to Water (ft)	Ground Water Elevation (ft)	Benzene (µg/L)	Toluene (µg/L)	Ethyl-benzene (µg/L)	Total Xylenes (µg/L)	TPH as gasoline (µg/L)	MTBE (µg/L)	Comments
MW-8	02/18/99	42.26	13.41	28.85	<0.5	<0.5	<0.5	<0.5	<50	<5.0	No free product or sheen
(Cont.)	06/24/99		14.35	27.91	NS	NS	NS	NS	NS	NS	Not sampled
	08/30/99		15.16	27.10	NS	NS	NS	NS	NS	NS	Not sampled
	11/09/99		15.61	26.65	NS	NS	NS	NS	NS	NS	Not sampled
	03/22/00		13.17	29.09	<0.5	<0.5	<0.5	<0.5	<50	<5.0	No free product or sheen
	06/12/00		14.19	28.07	NS	NS	NS	NS	NS	NS	Not sampled

TABLE 1

GROUND WATER MONITORING DATA

Beacon Station No. 721
44 Lewelling Boulevard
San Lorenzo, California

Monitoring Well	Date	Top of Riser Elevation (ft)	Depth to Water (ft)	Ground Water Elevation (ft)	Benzene (µg/L)	Toluene (µg/L)	Ethyl-benzene (µg/L)	Total Xylenes (µg/L)	TPH as gasoline (µg/L)	MTBE (µg/L)	Comments
MW-9	02/18/92	44.94	18.87	26.07	<0.5	<0.5	<0.5	<0.5	<50	NA	
	05/14/92		18.55	26.39	<0.5	<0.5	<0.5	<0.5	<50	NA	
	08/27/92		20.80	24.14	<0.5	<0.5	<0.5	<0.5	<50	NA	
	11/19/92		21.90	23.04	<0.5	<0.5	<0.5	1.3	<50	NA	
	02/03/93		17.25	27.69	<0.5	<0.5	<0.5	<0.5	<50	NA	
	06/23/93		17.61	27.33	<0.5	<0.5	<0.5	<0.5	<50	NA	No free product or sheen
	09/22/93		19.18	25.76	<0.5	<0.5	<0.5	<0.5	<50	NA	No free product or sheen
	01/24/94		19.17	25.77	<0.5	<0.5	<0.5	<0.5	<50	NA	
	04/07/94		18.23	26.71	<0.5	<0.5	<0.5	<0.5	<50	NA	No free product or sheen
	06/07/94		18.40	26.54	<0.5	<0.5	<0.5	<0.5	<50	NA	No free product or sheen
	09/28/94		20.01	24.93	<0.5	<0.5	<0.5	<0.5	<50	NA	No free product or sheen
	12/14/94		18.88	26.06	<0.5	<0.5	<0.5	<0.5	<50	NA	No free product or sheen
	03/15/95		16.24	28.70	<0.5	<0.5	<0.5	<0.5	<50	NA	No free product or sheen
	06/13/95		16.75	28.19	<0.5	<0.5	<0.5	<0.5	<50	NA	No free product or sheen
	09/28/95		18.04	26.90	<0.5	<0.5	<0.5	<0.5	<50	NA	No free product or sheen
	12/28/95		17.87	27.07	<0.5	<0.5	<0.5	<0.5	<50	<5.0	No free product or sheen
	03/12/96		NM	NC	NS	NS	NS	NS	NS	NS	Not measured
	06/11/96		16.26	28.68	<0.5	<0.5	<0.5	<0.5	<50	<5.0	No free product or sheen
	10/02/96		17.74	27.20	<0.5	<0.5	<0.5	<0.5	<50	<5.0	No free product or sheen
	01/28/97		14.51	30.43	<0.5	<0.5	<0.5	<0.5	<50	<5.0	No free product or sheen
	05/20/97		16.73	28.21	<0.5	<0.5	<0.5	<0.5	<50	<5.0	No free product or sheen
	08/18/97		NM	NC	NS	NS	NS	NS	NS	NS	Not measured
	09/29/97		NM	NC	NS	NS	NS	NS	NS	NS	Not measured
	11/05/97		18.61	26.33	<0.5	<0.5	<0.5	<0.5	<50	<5.0/<0.5 ^b	No free product or sheen
	03/31/98		NM	NC	NS	NS	NS	NS	NS	NS	Not measured
	05/26/98		15.28	29.66	NS	NS	NS	NS	NS	NS	No free product or sheen
	05/28/98		NM	NC	NS	NS	NS	NS	NS	NS	Not measured
	08/19/98		16.55	28.39	<0.5	<0.5	<0.5	<0.5	<50	<5.0	No free product or sheen
	11/17/98		17.32	27.62	<0.5	<0.5	<0.5	<0.5	<50	<5.0	No free product or sheen

TABLE 1

GROUND WATER MONITORING DATA

Beacon Station No. 721
 44 Lewelling Boulevard
 San Lorenzo, California

Monitoring Well	Date	Top of Riser Elevation (ft)	Depth to Water (ft)	Ground Water Elevation (ft)	Benzene (µg/L)	Toluene (µg/L)	Ethyl-benzene (µg/L)	Total Xylenes (µg/L)	TPH as gasoline (µg/L)	MTBE (µg/L)	Comments
MW-9	02/18/99	44.94	15.74	29.20	<0.5	<0.5	<0.5	<0.5	<50	<5.0	No free product or sheen
(Cont.)	06/24/99		16.73	28.21	NS	NS	NS	NS	NS	NS	Not sampled
	08/30/99		17.48	27.46	NS	NS	NS	NS	NS	NS	Not sampled
	11/09/99		17.98	26.96	NS	NS	NS	NS	NS	NS	Not sampled
	03/22/00		15.46	29.48	<0.5	<0.5	<0.5	<0.5	<50	<5.0	No free product or sheen
	06/12/00		16.70	28.24	NS	NS	NS	NS	NS	NS	Not sampled

TABLE 1

GROUND WATER MONITORING DATA

Beacon Station No. 721
44 Lewelling Boulevard
San Lorenzo, California

Monitoring Well	Date	Top of Riser Elevation (ft)	Depth to Water (ft)	Ground Water Elevation (ft)	Benzene (µg/L)	Toluene (µg/L)	Ethyl-benzene (µg/L)	Total Xylenes (µg/L)	TPH as gasoline (µg/L)	MTBE (µg/L)	Comments
MW-10	02/18/92	42.34	16.63	25.71	110	57	440	53	18,000	NA	
	05/14/92		15.25	27.09	NS	NS	NS	NS	NS	NS	
	05/15/92		NM	NC	24	9.8	97	<0.5	8,500	NA	
	08/27/92		18.35	23.99	NS	NS	NS	NS	NS	NS	
	08/29/92		NM	NC	20	2.8	40	3.5	9,600	NA	
	11/19/92		19.43	22.91	36	21	330	31	5,700	NA	
	02/03/93		15.01	27.33	15	4.6	36	9.6	2,200	NA	
	06/23/93		15.30	27.04	21	24	540	45	8,100	NA	No free product or sheen
	09/22/93		16.90	25.44	22	17	350	16	6,200	NA	No free product or sheen
	01/24/94		NM	NC	NS	NS	NS	NS	NS	NA	Not measured
	04/07/94		15.97	26.37	6.4	2.9	150	4.7	4,000	NA	No free product or sheen
	06/07/94		16.04	26.30	5.6	<2.5	150	5.7	6,700	NA	No free product or sheen
	09/28/94		17.69	24.65	2.2	2.6	110	44	5,700	NA	No free product or sheen
	12/14/94		16.65	25.69	<1.3	<1.3	77	27	3,500	NA	No free product or sheen
	03/15/95		14.08	28.26	<5.0	6.7	150	23	7,200	NA	No free product or sheen
	06/13/95		14.49	27.85	9	48	610	130	8,400	NA	No free product or sheen
	09/28/95		15.81	26.53	22	17	360	24	6,300	NA	No free product or sheen
	12/28/95		15.46	26.88	4.4	5.6	340	11	5,000	37	No free product or sheen
	03/12/96		12.62	29.72	1.4	5.9	41	73	4,500	120	No free product or sheen
	06/11/96		14.40	27.94	<5.0	25	350	81	7,500	<25	No free product or sheen
	10/02/96		15.47	26.87	18	<2.5	<2.5	<2.5	2,600	<25	No free product or sheen
	01/28/97		15.69	26.65	5.9	<2.5	29	19	2,800	<25	No free product or sheen
	05/20/97		14.48	27.86	<20	34	290	74	6,000	<100	No free product or sheen
	08/18/97		15.91	26.43	<20	7.7	94	15	5,900	<50	No free product or sheen
	09/29/97		NM	NC	NS	NS	NS	NS	NS	NS	Not measured
	11/05/97		16.32	26.02	1.1	0.86	47	1.6	5,400	<50/2.3 ^b	No free product or sheen
	03/31/98		12.25	30.09	56	180	1,400	3,700	20,000	250	No free product or sheen
	05/26/98		12.97	29.37	NS	NS	NS	NS	NS	NS	No free product or sheen
	05/28/98		NM	NC	76	200	1,600	3,900	16,000	190	No free product or sheen

TABLE 1

GROUND WATER MONITORING DATA

Beacon Station No. 721
44 Lewelling Boulevard
San Lorenzo, California

Monitoring Well	Date	Top of Riser Elevation (ft)	Depth to Water (ft)	Ground Water Elevation (ft)	Benzene (µg/L)	Toluene (µg/L)	Ethyl-benzene (µg/L)	Total Xylenes (µg/L)	TPH as gasoline (µg/L)	MTBE (µg/L)	Comments
MW-10	08/19/98	42.34	14.27	28.07	95	160	1,300	1,700	14,000	<100	No free product or sheen
(Cont.)	11/17/98		15.08	27.26	82	64	590	150	7500	290	No free product or sheen
	02/18/99		13.61	28.73	41	16	270	79	4,700	<100	No free product or sheen
	06/24/99		14.50	27.84	27	74	280	160	9,400	300	No free product or sheen
	08/30/99		15.26	27.08	15	33	160	33	8,500	290	No free product or sheen
	11/09/99		15.72	26.62	3.9	11	60	14	7,600	120	No free product or sheen
	03/22/00		13.40	28.94	3.5	33	360	320	5,800	160	No free product or sheen
	06/12/00		14.42	27.92	4.3	47	370	210	7,200	270	No free product or sheen

TABLE 1

GROUND WATER MONITORING DATA

Beacon Station No. 721
44 Lewelling Boulevard
San Lorenzo, California

Monitoring Well	Date	Top of Riser Elevation (ft)	Depth to Water (ft)	Ground Water Elevation (ft)	Benzene (µg/L)	Toluene (µg/L)	Ethyl-benzene (µg/L)	Total Xylenes (µg/L)	TPH as gasoline (µg/L)	MTBE (µg/L)	Comments
MW-11	02/18/92	45.00	17.00	28.00	<0.5	<0.5	<0.5	<0.5	2,400	NA	
	05/14/92		19.02	25.98	<0.5	1.9	1.3	0.7	1,600	NA	
	08/27/92		21.13	23.87	15	2	0.6	1.2	2,100	NA	
	11/19/92		17.91	27.09	<0.5	<0.5	<0.5	<0.5	490	NA	
	02/03/92		17.91	27.09	<0.5	<0.5	0.55	<0.5	500	NA	
	06/23/93		18.14	26.86	<0.5	<0.5	<0.5	<0.5	350	NA	No free product or sheen
	09/22/93		19.63	25.37	<0.5	0.65	<0.5	0.71	200	NA	No free product or sheen
	01/24/94		19.79	25.21	<0.5	<0.5	<0.5	<0.5	450	NA	
	04/07/94		18.78	26.22	<0.5	<0.5	<0.5	<0.5	500	NA	No free product or sheen
	06/07/94		18.88	26.12	<0.5	<0.5	<0.5	0.64	560	NA	No free product or sheen
	09/28/94		20.45	24.55	<0.5	<0.5	<0.5	<0.5	600	NA	No free product or sheen
	12/14/94		19.45	25.55	<0.5	<0.5	<0.5	<0.5	340	NA	No free product or sheen
	03/15/95		17.32	27.68	<0.5	<0.5	<0.5	<0.5	340	NA	No free product or sheen
	06/13/95		17.43	27.57	<0.5	<0.5	<0.5	<0.5	210 ^a	NA	No free product or sheen
	09/28/95		18.67	26.33	4.1	0.5	<0.5	<0.5	93	NA	No free product or sheen
	12/28/95		18.31	26.69	<0.5	<0.5	<0.5	<0.5	380 ^a	<5.0	No free product or sheen
	03/12/96		15.89	29.11	<0.5	<0.5	<0.5	<0.5	110	<5.0	No free product or sheen
	06/11/96		16.98	28.02	<0.5	<0.5	<0.5	<0.5	400 ^a	<5.0	No free product or sheen
	10/02/96		18.20	26.80	<0.5	<0.5	<0.5	<0.5	<50	<5.0	No free product or sheen
	01/28/97		12.53	32.47	<0.5	<0.5	<0.5	<0.5	110 ^a	<5.0	No free product or sheen
	05/20/97		17.36	27.64	<0.5	<0.5	<0.5	<0.5	330	<5.0	No free product or sheen
	08/18/97		18.84	26.16	<0.5	<0.5	<0.5	<0.5	<50	<5.0	No free product or sheen
	09/29/97		NM	NC	NS	NS	NS	NS	NS	NS	Not measured
	11/05/97		NM	NC	NS	NS	NS	NS	NS	NS	Not measured
	03/31/98		15.39	29.61	<0.5	2.8	12	16	460	<5.0	No free product or sheen
	05/26/98		16.25	28.75	NS	NS	NS	NS	NS	NS	No free product or sheen
	05/28/98		NM	NC	14	24	88	75	1,100	24	No free product or sheen
	08/19/98		17.30	27.70	16	9.6	69	17	1,200	6	No free product or sheen
	11/17/98		18.05	26.95	15	4.4	14	<0.5	580	21	No free product or sheen

TABLE 1

GROUND WATER MONITORING DATA

Beacon Station No. 721
 44 Lewelling Boulevard
 San Lorenzo, California

Monitoring Well	Date	Top of Riser Elevation (ft)	Depth to Water (ft)	Ground Water Elevation (ft)	Benzene (µg/L)	Toluene (µg/L)	Ethyl-benzene (µg/L)	Total Xylenes (µg/L)	TPH as gasoline (µg/L)	MTBE (µg/L)	Comments
MW-11	02/18/99	45.00	16.87	28.13	8.0	<0.5	1.4	<0.5	390	44	No free product or sheen
(Cont.)	06/24/99		17.50	27.50	4.6	<0.5	0.66	<0.5	610	59	No free product or sheen
	08/30/99		18.19	26.81	NS	NS	NS	NS	NS	NS	Not sampled
	11/09/99		18.64	26.36	0.87	<0.5	<0.5	<0.5	250	66	No free product or sheen
	03/22/00		16.52	28.48	<0.5	<0.5	<0.5	<0.5	330	100	No free product or sheen
	06/12/00		17.44	27.56	<0.5	<0.5	<0.5	<0.5	52	49	No free product or sheen

TABLE 1

GROUND WATER MONITORING DATA

Beacon Station No. 721
44 Lewelling Boulevard
San Lorenzo, California

Monitoring Well	Date	Top of Riser Elevation (ft)	Depth to Water (ft)	Ground Water Elevation (ft)	Benzene (µg/L)	Toluene (µg/L)	Ethyl-benzene (µg/L)	Total Xylenes (µg/L)	TPH as gasoline (µg/L)	MTBE (µg/L)	Comments
RW-1	05/14/92	43.17	16.88	26.29	NS	NS	NS	NS	NS	NS	
	05/15/92		NM	NC	270	62	29	140	790	NA	
	08/27/92		19.05	24.12	1,300	200	68	810	24,000	NA	
	11/19/92		21.11	22.07	NS	NS	NS	NS	NS	NS	
	02/03/92		15.48	27.69	71	35	22	110	620	NA	
	06/23/93		28.25	14.92	30	33	9.8	35	220	NA	No free product or sheen
	09/22/93		17.83	25.34	800	400	170	910	4,100	NA	No free product or sheen
	01/24/94		24.00	19.17	33	6	6.9	23	190	NA	
	04/07/94		16.05	27.12	110	57	32	260	1,500	NA	No free product or sheen
	06/07/94		16.00	27.17	130	51	45	180	1,700	NA	No free product or sheen
	09/28/94		18.35	24.82	54	9.2	12	29	350	NA	No free product or sheen
	12/14/94		19.50	23.67	6.8	2.1	1.2	3.4	79	NA	No free product or sheen
	03/15/95		17.00	26.17	NS	NS	NS	NS	NS	NS	No free product or sheen
	04/10/95		NM	NC	54	11	11	69	410	NA	Not measured
	06/13/95		14.95	28.22	1,600	780	340	1,400	8,200	NA	No free product or sheen
	09/28/95		27.63	15.54	<0.5	<0.5	<0.5	<0.5	<50	NA	No free product or sheen
	12/28/95		14.54	28.63	<0.5	<0.5	<0.5	<0.5	<50	<5.0	No free product or sheen
	03/12/96		11.02	32.15	<0.5	<0.5	<0.5	<0.5	86	110	No free product or sheen
	06/11/96		14.52	28.65	38	11	4.7	50	230	68	No free product or sheen
	10/02/96		15.53	27.64	68	29	14	75	360	47	No free product or sheen
	01/28/97		12.59	30.58	0.77	<0.5	<0.5	<0.5	<50	9	No free product or sheen
	05/20/97		14.85	28.32	<0.5	<0.5	<0.5	<0.5	<50	32	No free product or sheen
	08/18/97		16.19	26.98	25	<0.5	<0.5	3.6	220	170	No free product or sheen
	09/29/97		NM	NC	240	2.8	51	55	900	230	Not measured
	11/05/97		16.95	26.22	340	3.2	59	78	1,300	240/220 ^b	No free product or sheen
	03/31/98		11.85	31.32	450	130	200	940	4,100	4,100	No free product or sheen
	05/26/98		13.13	30.04	NS	NS	NS	NS	NS	NS	No free product or sheen
	05/28/98		NM	NC	830	210	170	720	17,000	14,000	No free product or sheen
	08/19/98		14.70	28.47	20	<2.5	7.1	15	540	2,100	No free product or sheen

TABLE 1

GROUND WATER MONITORING DATA

Beacon Station No. 721
44 Lewelling Boulevard
San Lorenzo, California

Monitoring Well	Date	Top of Riser Elevation (ft)	Depth to Water (ft)	Ground Water Elevation (ft)	Benzene (µg/L)	Toluene (µg/L)	Ethyl-benzene (µg/L)	Total Xylenes (µg/L)	TPH as gasoline (µg/L)	MTBE (µg/L)	Comments
RW-1	11/17/98	43.17	15.54	27.63	7.8	<2.5	5.6	<2.5	630	730	No free product or sheen
(cont)	02/18/99		13.75	29.42	6.7	1.6	3.2	15	180	100	No free product or sheen
	06/24/99		14.96	28.21	<0.5	<0.5	<0.5	<0.5	<50	42	No free product or sheen
	08/30/99		15.75	27.42	<0.5	<0.5	<0.5	<0.5	<50	79	No free product or sheen
	11/09/99		17.45	25.72	<0.5	<0.5	<0.5	<0.5	<50	78	No free product or sheen
	03/22/00		13.51	29.66	1.2	<0.5	<0.5	<0.5	<50	17	No free product or sheen
	06/12/00		13.65	29.52	<0.5	<0.5	<0.5	1.0	<50	40	No free product or sheen

^a Product is not typical gasoline.

^b MTBE by EPA Method 8020/EPA Method 8260.

^c Constituents by EPA Method 8260.

Top of Riser Elevations = Elevations surveyed by Aegis Environmental and are assumed relative to mean sea level.

TPH = Total petroleum hydrocarbons.

MTBE = Methyl tertiary butyl ether.

µg/L = Micrograms per liter.

NS = Not sampled.

NM = Not measured.

NC = Not calculated.

NA = Not analyzed.

Note: Aegis Environmental, Inc. collected data prior to June 23, 1993.

TABLE 2

VOLUME OF GROUND WATER TREATED

Beacon Station No. 721
44 Lewelling Boulevard
San Lorenzo, California

Date	Totalizer Reading (gallons)	Change in Totalizer Reading (gallons)	Total Discharge (gallons)	Average Flow Rate (gallons per Minute)
06/21/93	2,120	NA	2,120	NA
07/14/93	117,367	115,247	117,367	3.48
08/14/93	210,470	93,103	210,470	2.09
09/22/93	255,241	44,771	255,241	0.80
01/24/94	399,520	144,279	399,520	0.81
03/31/94	460,075	60,555	460,075	0.64
06/21/94	597,663	137,588	597,663	1.17
09/28/94	662,894	65,231	662,894	0.46
12/14/94	723,160	60,266	723,160	0.54
03/15/95	902,621	179,461	902,621	1.37
06/30/95	929,056	26,435	929,056	0.17
09/26/95	1,018,150	89,094	1,018,150	0.70
12/06/95	1,053,866	35,716	1,053,866	0.35
01/30/96	1,067,852	13,986	1,067,852	0.18
01/30/96 ^a	0	NA	1,067,852	NA
03/19/96	8,900	8,900	1,076,752	0.13
06/27/96	107,780	98,880	1,175,632	0.69
09/18/96	108,910	1,130	1,176,762	0.01
10/22/96	116,540	7,630	1,184,392	0.16
06/24/99	116,580	40	1,184,432	0.00
07/26/99	117,170	590	1,185,022	0.01
07/27/99	120,840	3,670	1,188,692	2.55
07/28/99	121,030	190	1,188,882	0.13
07/29/99	121,270	240	1,189,122	0.17
07/30/99	121,490	220	1,189,342	0.15
08/02/99	121,840	350	1,189,692	0.08
08/09/99	141,910	20,070	1,209,762	1.99
08/26/99	149,647	7,737	1,217,499	0.32
08/30/99	150,380	733	1,218,232	0.13
09/07/99	152,000	1,620	1,219,852	0.14
09/22/99	154,890	2,890	1,222,742	0.13
10/13/99	159,348	4,458	1,227,200	0.15
10/28/99	162,245	2,897	1,230,097	0.13
11/11/99	164,912	2,667	1,232,764	0.13
11/23/99	167,245	2,333	1,235,097	0.14
12/29/99	174,090	6,845	1,228,252	0.13
01/12/00	176,691	2,601	1,230,853	0.13

TABLE 2**VOLUME OF GROUND WATER TREATED**

Beacon Station No. 721
44 Lewelling Boulevard
San Lorenzo, California

Date	Totalizer Reading (gallons)	Change in Totalizer Reading (gallons)	Total Discharge (gallons)	Average Flow Rate (gallons per Minute)
02/09/00	183,087	6,396	1,237,249	0.16
02/24/00	183,090	3	1,237,252	0.00
03/09/00	183,093	3	1,237,255	0.00
03/30/00	183,093	0	1,237,255	0.00
04/13/00	183,230	137	1,237,392	0.01
04/27/00	183,233	3	1,237,395	0.00
05/10/00	186,871	3,638	1,241,033	0.19
05/24/00	187,563	692	1,241,725	0.03
06/08/00	187,749	186	1,241,911	0.01
06/20/00	189,652	1,903	1,243,814	0.11

^a Flow totalizer replaced on January 30, 1996.

TABLE 3

CUMMULATIVE GROUND WATER SYSTEM ANALYTICAL RESULTS

Beacon Station No. 721
44 Lewelling Boulevard
San Lorenzo, California

Sample ID	Date	Benzene (µg/L)	Toluene (µg/L)	Ethyl- benzene (µg/L)	Total Xylenes (µg/L)	TPH as gasoline (µg/L)	MTBE (µg/L)	Priority Pollutant Metals (µg/L)	Phenols & Cyanide (µg/L)	pH	C.O.D. (mg/L)	T.S.S. (mg/L)
Effluent	05/28/93	<0.5	<0.5	<0.5	<0.5	<50	NA	NA	NA	NA	NA	NA
Effluent	10/01/93	<0.5	<0.5	<0.5	<0.5	<50	NA	NA	NA	NA	NA	NA
Effluent	01/24/94	<0.5	<0.5	<0.5	<0.5	<50	NA	NA	NA	NA	NA	NA
Effluent	04/07/94	<0.5	<0.5	<0.5	<0.5	<50	NA	NA	NA	NA	NA	NA
Effluent	05/18/94	<0.5	<0.5	<0.5	<0.5	<50	NA	NA	NA	NA	NA	NA
Influent	12/14/94	<0.5	<0.5	<0.5	<0.5	<50	NA	NA	NA	NA	NA	NA
Mid-Carbon	12/14/94	<0.5	<0.5	<0.5	<0.5	<50	NA	NA	NA	NA	NA	NA
Effluent	12/14/94	<0.5	<0.5	<0.5	<0.5	<50	NA	NA	NA	NA	NA	NA
Influent	03/22/95	<0.5	<0.5	<0.5	<0.5	<50	NA	NA	NA	NA	NA	NA
Mid-Carbon	03/22/95	<0.5	<0.5	<0.5	<0.5	<50	NA	NA	NA	NA	NA	NA
Effluent	03/22/95	<0.5	<0.5	<0.5	<0.5	<50	NA	NA	NA	NA	NA	NA
Influent	04/10/95	3.9	0.57	0.65	5.5	<50	NA	NA	NA	NA	NA	NA
Mid-Carbon	04/10/95	<0.5	<0.5	<0.5	<0.5	<50	NA	NA	NA	NA	NA	NA
Effluent	04/10/95	<0.5	<0.5	<0.5	<0.5	<50	NA	NA	NA	NA	NA	NA
Effluent	07/28/95	<0.5	<0.5	<0.5	<0.5	<50	NA	NA	NA	NA	NA	NA
Influent	08/10/95	<0.5	<0.5	<0.5	<0.5	<50	NA	NA	NA	NA	NA	NA
Mid-Carbon	08/10/95	<0.5	<0.5	<0.5	<0.5	<50	NA	NA	NA	NA	NA	NA
Effluent	08/10/95	<0.5	<0.5	<0.5	<0.5	<50	NA	NA	NA	NA	NA	NA

TABLE 3

CUMMULATIVE GROUND WATER SYSTEM ANALYTICAL RESULTS

Beacon Station No. 721
44 Lewelling Boulevard
San Lorenzo, California

Sample ID	Date	Benzene (µg/L)	Toluene (µg/L)	Ethyl- benzene (µg/L)	Total Xylenes (µg/L)	TPH as gasoline (µg/L)	MTBE (µg/L)	Priority Pollutant Metals (µg/L)	Phenols & Cyanide (µg/L)	pH	C.O.D. (mg/L)	T.S.S. (mg/L)
Influent	09/14/95	<0.5	<0.5	<0.5	<0.5	490 ^a	NA	NA	NA	NA	NA	NA
Mid-Carbon	09/14/95	<0.5	<0.5	<0.5	<0.5	<50	NA	NA	NA	NA	NA	NA
Effluent	09/14/95	<0.5	<0.5	<0.5	<0.5	<50	NA	NA	NA	NA	NA	NA
Influent	12/06/95	<0.5	<0.5	<0.5	<0.5	<50	NA	NA	NA	NA	NA	NA
Mid-Carbon	12/06/95	<0.5	<0.5	<0.5	<0.5	<50	NA	NA	NA	NA	NA	NA
Effluent	12/06/95	<0.5	<0.5	<0.5	<0.5	<50	NA	NA	NA	NA	NA	NA
Influent	01/30/96	<0.5	<0.5	<0.5	<0.5	<50	<5.0	NA	NA	NA	NA	NA
Mid-Carbon	01/30/96	<0.5	<0.5	<0.5	<0.5	<50	<5.0	NA	NA	NA	NA	NA
Effluent	01/30/96	<0.5	<0.5	<0.5	<0.5	<50	NA	NA	NA	NA	NA	NA
Influent	02/27/96	<0.5	<0.5	<0.5	<0.5	<50	NA	NA	NA	NA	NA	NA
Mid-Carbon	02/27/96	<0.5	<0.5	<0.5	<0.5	<50	NA	NA	NA	NA	NA	NA
Effluent	02/27/96	<0.5	<0.5	<0.5	<0.5	<50	NA	NA	NA	NA	NA	NA
Influent	03/12/96	<0.5	<0.5	<0.5	<0.5	<50	5.3	NA	NA	NA	NA	NA
Mid-Carbon	03/12/96	<0.5	<0.5	<0.5	<0.5	<50	<5.0	NA	NA	NA	NA	NA
Effluent	03/12/96	<0.5	<0.5	<0.5	<0.5	<50	<5.0	NA	NA	NA	NA	NA
Influent	04/16/96	<0.5	<0.5	<0.5	<0.5	<50	<5.0	NA	NA	NA	NA	NA
Mid-Carbon	04/16/96	<0.5	<0.5	<0.5	<0.5	<50	<5.0	NA	NA	NA	NA	NA
Effluent	04/16/96	<0.5	<0.5	<0.5	<0.5	<50	<5.0	NA	NA	NA	NA	NA

TABLE 3

CUMMULATIVE GROUND WATER SYSTEM ANALYTICAL RESULTS

Beacon Station No. 721
44 Lewelling Boulevard
San Lorenzo, California

Sample ID	Date	Benzene (µg/L)	Toluene (µg/L)	Ethyl- benzene (µg/L)	Total Xylenes (µg/L)	TPH as gasoline (µg/L)	MTBE (µg/L)	Priority Pollutant Metals (µg/L)	Phenols & Cyanide (µg/L)	pH	C.O.D. (mg/L)	T.S.S. (mg/L)
Influent	05/07/96	<0.5	<0.5	<0.5	<0.5	<50	7.9	NA	NA	NA	NA	NA
Mid-Carbon	05/07/96	<0.5	<0.5	<0.5	<0.5	<50	<5.0	NA	NA	NA	NA	NA
Effluent	05/07/96	<0.5	<0.5	<0.5	<0.5	<50	<5.0	NA	NA	NA	NA	NA
Influent	06/11/96	2.4	0.57	5.9	2.8	190	610	NA	NA	NA	NA	NA
Mid-Carbon	06/11/96	<0.5	<0.5	<0.5	<0.5	<50	<5.0	NA	NA	NA	NA	NA
Effluent	06/11/96	<0.5	<0.5	<0.5	<0.5	<50	<5.0	NA	NA	NA	NA	NA
Influent	09/18/96	<0.5	<0.5	<0.5	<0.5	<50	11	NA	NA	NA	NA	NA
Mid-Carbon	09/18/96	<0.5	<0.5	<0.5	<0.5	<50	<5.0	NA	NA	NA	NA	NA
Effluent	09/18/96	<0.5	<0.5	<0.5	<0.5	<50	<5.0	NA	NA	NA	NA	NA
Influent	06/24/99	<0.5	<0.5	<0.5	<0.5	<50	NA	NA	NA	NA	NA	NA
DAT Effluent	06/24/99	<0.5	<0.5	<0.5	<0.5	<50	NA	NA	NA	NA	NA	NA
Mid-Carbon	06/24/99	<0.5	<0.5	<0.5	<0.5	<50	NA	NA	NA	NA	NA	NA
Effluent	06/24/99	<0.5	<0.5	<0.5	<0.5	<50	NA	0.0037 ^a	ND	8.9	NA	NA
Influent	07/26/99	<0.5	<0.5	<0.5	<0.5	<50	NA	NA	NA	NA	NA	NA
Influent	07/27/99	<0.5	<0.5	<0.5	<0.5	<50	NA	NA	NA	NA	NA	NA
Influent	07/28/99	<0.5	<0.5	<0.5	<0.5	<50	NA	NA	NA	NA	NA	NA
Influent	08/02/99	<0.5	<0.5	<0.5	<0.5	<50	NA	NA	NA	NA	NA	NA
DAT Effluent	08/02/99	<0.5	<0.5	<0.5	<0.5	<50	NA	NA	NA	NA	NA	NA
Mid-Carbon	08/02/99	<0.5	<0.5	<0.5	<0.5	<50	NA	NA	NA	NA	NA	NA
Effluent	08/02/99	<0.5	<0.5	<0.5	<0.5	<50	NA	NA	NA	NA	NA	NA

TABLE 3

CUMMULATIVE GROUND WATER SYSTEM ANALYTICAL RESULTS

Beacon Station No. 721
44 Lewelling Boulevard
San Lorenzo, California

Sample ID	Date	Benzene (µg/L)	Toluene (µg/L)	Ethyl- benzene (µg/L)	Total Xylenes (µg/L)	TPH as gasoline (µg/L)	MTBE (µg/L)	Priority Pollutant Metals (µg/L)	Phenols & Cyanide (µg/L)	pH	C.O.D. (mg/L)	T.S.S. (mg/L)
Effluent	08/30/99	NA	NA	NA	NA	NA	NA	NA	NA	7.9	<1.0	2.6
Influent	09/07/99	<0.5	<0.5	<0.5	<0.5	91	NA	NA	NA	NA	NA	NA
DAT Effluent	09/07/99	<0.5	<0.5	<0.5	<0.5	<50	NA	NA	NA	NA	NA	NA
Mid-Carbon	09/07/99	<0.5	<0.5	<0.5	<0.5	<50	NA	NA	NA	NA	NA	NA
Effluent	09/07/99	<0.5	<0.5	<0.5	<0.5	<50	NA	NA	NA	NA	NA	NA
Influent	10/13/99	<0.5	<0.5	<0.5	<0.5	<50	110	NA	NA	NA	NA	NA
DAT Effluent	10/13/99	<0.5	<0.5	<0.5	<0.5	<50	<5.0	NA	NA	NA	NA	NA
Mid-Carbon	10/13/99	<0.5	<0.5	<0.5	<0.5	<50	<5.0	NA	NA	NA	NA	NA
Effluent	10/13/99	<0.5	<0.5	<0.5	<0.5	<50	<5.0	NA	NA	7.96	<10	<5.0
Influent	11/11/99	<0.5	<0.5	<0.5	0.95	<50	28	NA	NA	NA	NA	NA
DAT Effluent	11/11/99	<0.5	<0.5	<0.5	<0.5	<50	<5.0	NA	NA	NA	NA	NA
Mid-Carbon	11/11/99	<0.5	<0.5	<0.5	<0.5	<50	<5.0	NA	NA	NA	NA	NA
Effluent	11/11/99	<0.5	<0.5	<0.5	<0.5	<50	<5.0	NA	NA	8.05	<10	<5.0
Influent	12/16/99	<0.5	<0.5	<0.5	<0.5	<50	NA	NA	NA	NA	NA	NA
DAT Effluent	12/16/99	<0.5	<0.5	<0.5	<0.5	<50	<5.0	NA	NA	NA	NA	NA
Mid-Carbon	12/16/99	<0.5	<0.5	<0.5	<0.5	<50	<5.0	NA	NA	NA	NA	NA
Effluent	12/16/99	<0.5	<0.5	<0.5	<0.5	<50	<5.0	NA	NA	8.27	<10	<5.0
Influent	01/12/00	<0.5	<0.5	<0.5	<0.5	<50	NA	NA	NA	NA	NA	NA
DAT Effluent	01/12/00	<0.5	<0.5	<0.5	<0.5	<50	NA	NA	NA	NA	NA	NA
Mid-Carbon	01/12/00	<0.5	<0.5	<0.5	<0.5	<50	NA	NA	NA	NA	NA	NA
Effluent	01/12/00	<0.5	<0.5	<0.5	<0.5	<50	NA	NA	NA	7.92	<10	<5.0

TABLE 3

CUMMULATIVE GROUND WATER SYSTEM ANALYTICAL RESULTS

Beacon Station No. 721
44 Lewelling Boulevard
San Lorenzo, California

Sample ID	Date	Benzene (µg/L)	Toluene (µg/L)	Ethyl- benzene (µg/L)	Total Xylenes (µg/L)	TPH as gasoline (µg/L)	MTBE (µg/L)	Priority Pollutant Metals (µg/L)	Phenols & Cyanide (µg/L)	pH	C.O.D. (mg/L)	T.S.S. (mg/L)
Influent	02/09/00	<0.5	<0.5	<0.5	<0.5	<50	68	NA	NA	NA	NA	NA
DAT Effluent	02/09/00	<0.5	<0.5	<0.5	<0.5	<50	<5.0	NA	NA	NA	NA	NA
Mid-Carbon	02/09/00	<0.5	<0.5	<0.5	<0.5	<50	<5.0	NA	NA	NA	NA	NA
Effluent	02/09/00	<0.5	<0.5	<0.5	<0.5	<50	<5.0	NA	NA	7.82	<10	<5.0
Influent	03/09/00	<0.5	<0.5	<0.5	<0.5	<50	NA	NA	NA	NA	NA	NA
DAT Effluent	03/09/00	<0.5	<0.5	<0.5	<0.5	<50	NA	NA	NA	NA	NA	NA
Mid-Carbon	03/09/00	<0.5	<0.5	<0.5	<0.5	<50	NA	NA	NA	NA	NA	NA
Effluent	03/09/00	<0.5	<0.5	<0.5	<0.5	<50	<5.0	NA	NA	7.88	<10	<5.0
Influent	04/13/00	1.9	<0.5	0.74	4.6	69	34	NA	NA	NA	NA	NA
DAT Effluent	04/13/00	<0.5	<0.5	<0.5	<0.5	<50	<5.0	NA	NA	NA	NA	NA
Mid-Carbon	04/13/00	<0.5	<0.5	<0.5	<0.5	<50	<5.0	NA	NA	NA	NA	NA
Effluent	04/13/00	<0.5	<0.5	<0.5	<0.5	<50	<5.0	NA	NA	7.43	<10	<5.0
Influent	05/10/00	13	1.3	<0.5	5.0	<50	76	NA	NA	NA	NA	NA
DAT Effluent	05/10/00	<0.5	1.2	<0.5	1.3	<50	<5.0	NA	NA	NA	NA	NA
Mid-Carbon	05/10/00	<0.5	0.56	<0.5	<0.5	<50	<5.0	NA	NA	NA	NA	NA
Effluent	05/10/00	<0.5	<0.5	<0.5	<0.5	<50	<5.0	NA	NA	8.19	<10	<5.0

TABLE 3

CUMMULATIVE GROUND WATER SYSTEM ANALYTICAL RESULTS

Beacon Station No. 721
44 Lewelling Boulevard
San Lorenzo, California

Sample ID	Date	Benzene (µg/L)	Toluene (µg/L)	Ethyl- benzene (µg/L)	Total Xylenes (µg/L)	TPH as gasoline (µg/L)	MTBE (µg/L)	Priority Pollutant Metals (µg/L)	Phenols & Cyanide (µg/L)	pH	C.O.D. (mg/L)	T.S.S. (mg/L)
Influent	06/08/00	29	1.1	<0.5	1.8	73	170	NA	NA	NA	NA	NA
DAT Effluent	06/08/00	<0.5	1.0	<0.5	1.4	<50	<5.0	NA	NA	NA	NA	NA
Mid-Carbon	06/08/00	<0.5	0.72	<0.5	0.96	<50	<5.0	NA	NA	NA	NA	NA
Effluent	06/08/00	<0.5	1.0	<0.5	1.5	<50	<5.0	NA	NA	8.02	<10	<5.0

^a Not typical gasoline.

^b Arsenic

µg/L = Micrograms per liter.

mg/L = Milligrams per liter.

TPH = Total petroleum hydrocarbons.

MTBE = Methyl-tertiary butyl ether.

C.O.D. = Chemical oxygen demand.

T.S.S. = Total suspended solids.

TABLE 4

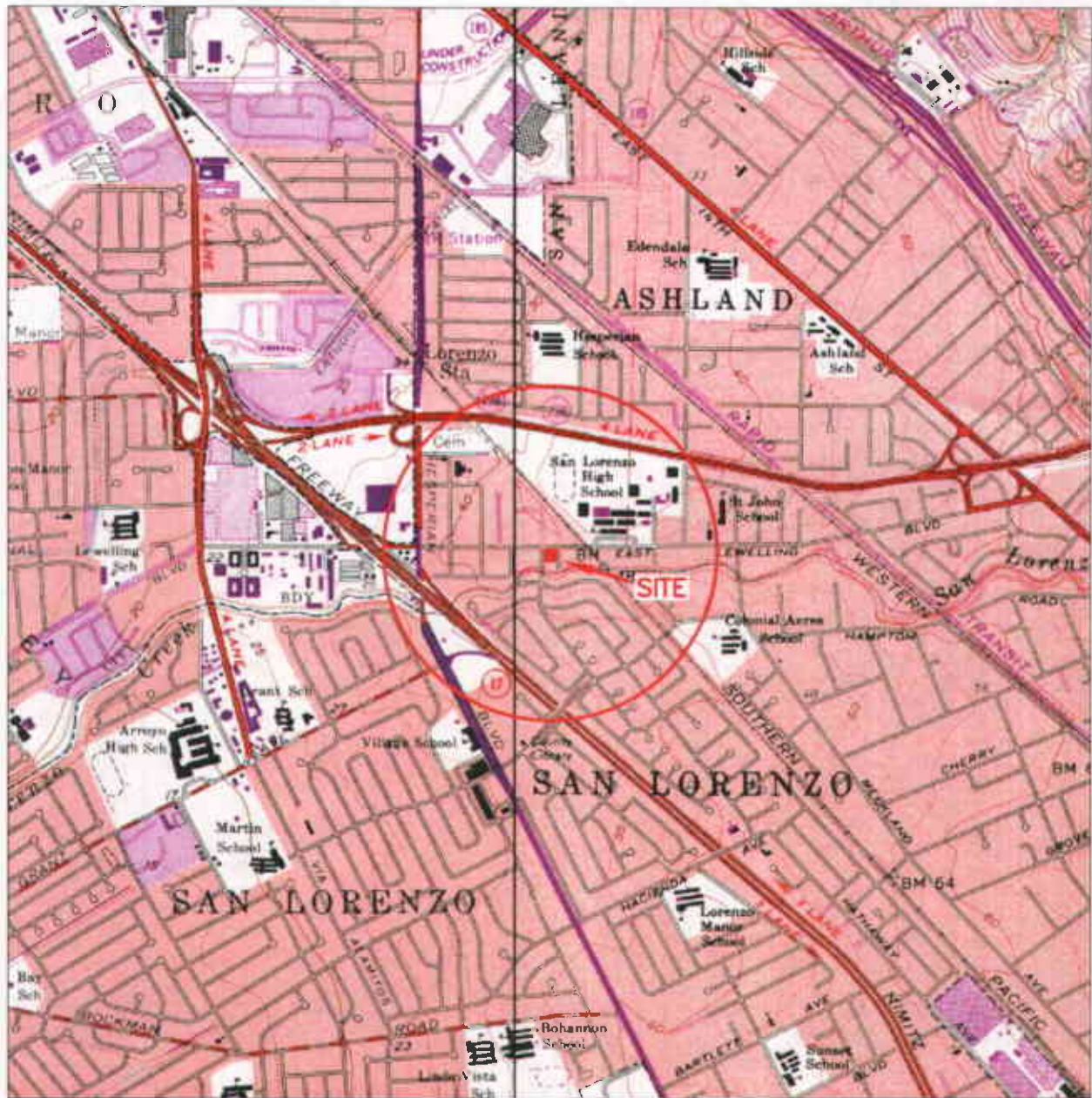
SVE SYSTEM ANALYTICAL RESULTS

Beacon Station No. 721
 44 Lewelling Boulevard
 San Lorenzo, California

Sample I.D.	Date	Benzene (ppmv)	Toluene (ppmv)	Ethyl-benzene (ppmv)	Total Xylenes (ppmv)	TPH as gasoline (ppmv)
Influent	04/07/00	<0.05	<0.05	<0.05	<0.05	<5.0
Mid	04/07/00	<0.05	<0.05	<0.05	<0.05	<5.0
Effluent	04/07/00	<0.05	<0.05	<0.05	<0.05	<5.0
Influent	05/10/00	<0.05	<0.05	<0.05	<0.05	<5.0
Mid	05/10/00	<0.05	<0.05	<0.05	<0.05	<5.0
Effluent	05/10/00	<0.05	<0.05	<0.05	<0.05	<5.0
Influent	06/08/00	<0.05	<0.05	<0.05	<0.05	<5.0
Mid	06/08/00	<0.05	<0.05	<0.05	<0.05	<5.0
Effluent	06/08/00	<0.05	<0.05	<0.05	<0.05	<5.0

Why no analysis for MTBE in vapor samples?

TPH = Total Petroleum Hydrocarbons
 ppmv = parts per million by volume



R 2 W

GENERAL NOTES:
 BASE MAP FROM U.S.G.S.
 HAYWARD, CA.
 7.5 MINUTE TOPOGRAPHIC
 PHOTOREVISED 1980



QUADRANGLE LOCATION

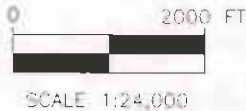
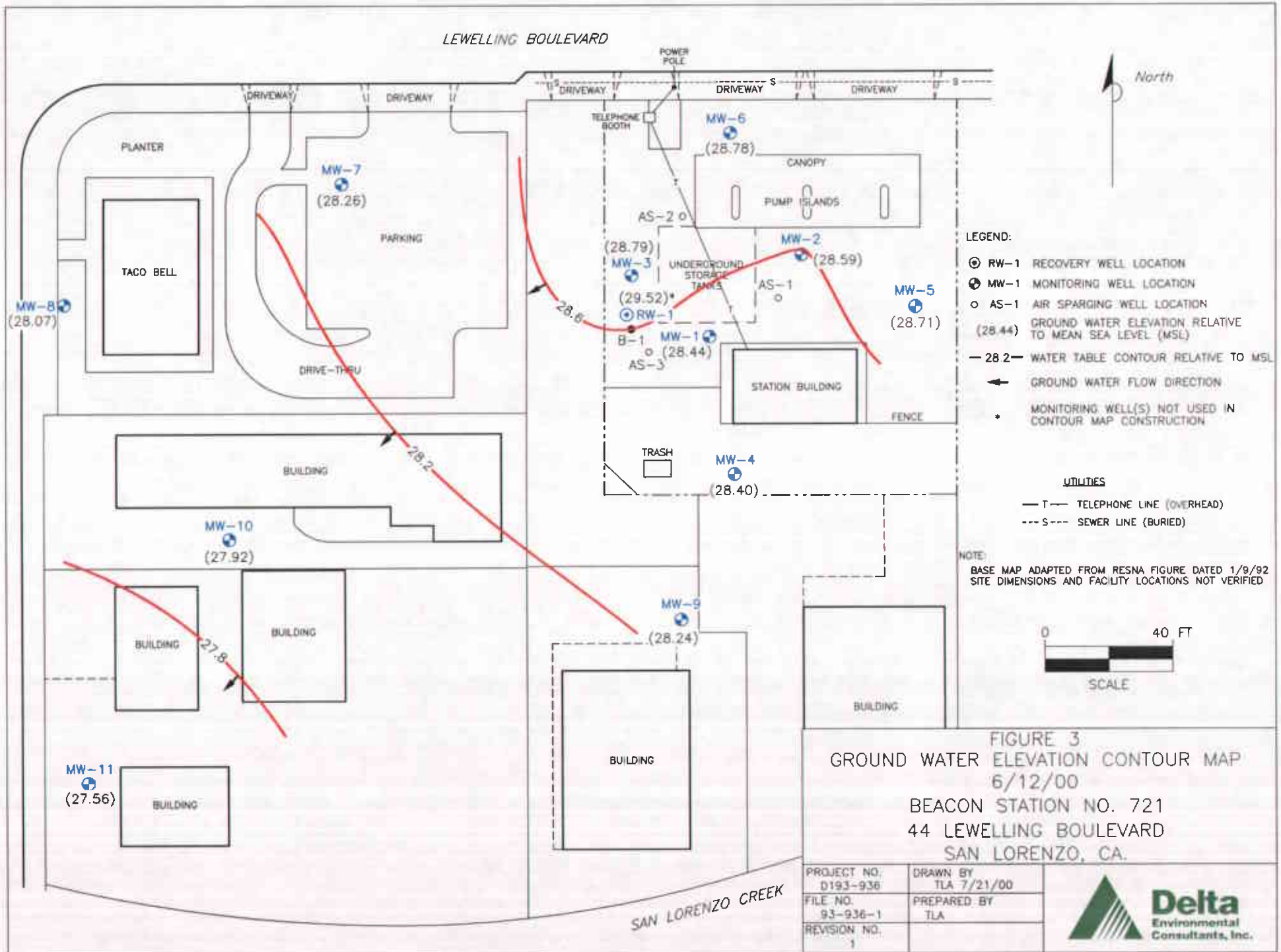


FIGURE 3
 SITE LOCATION MAP

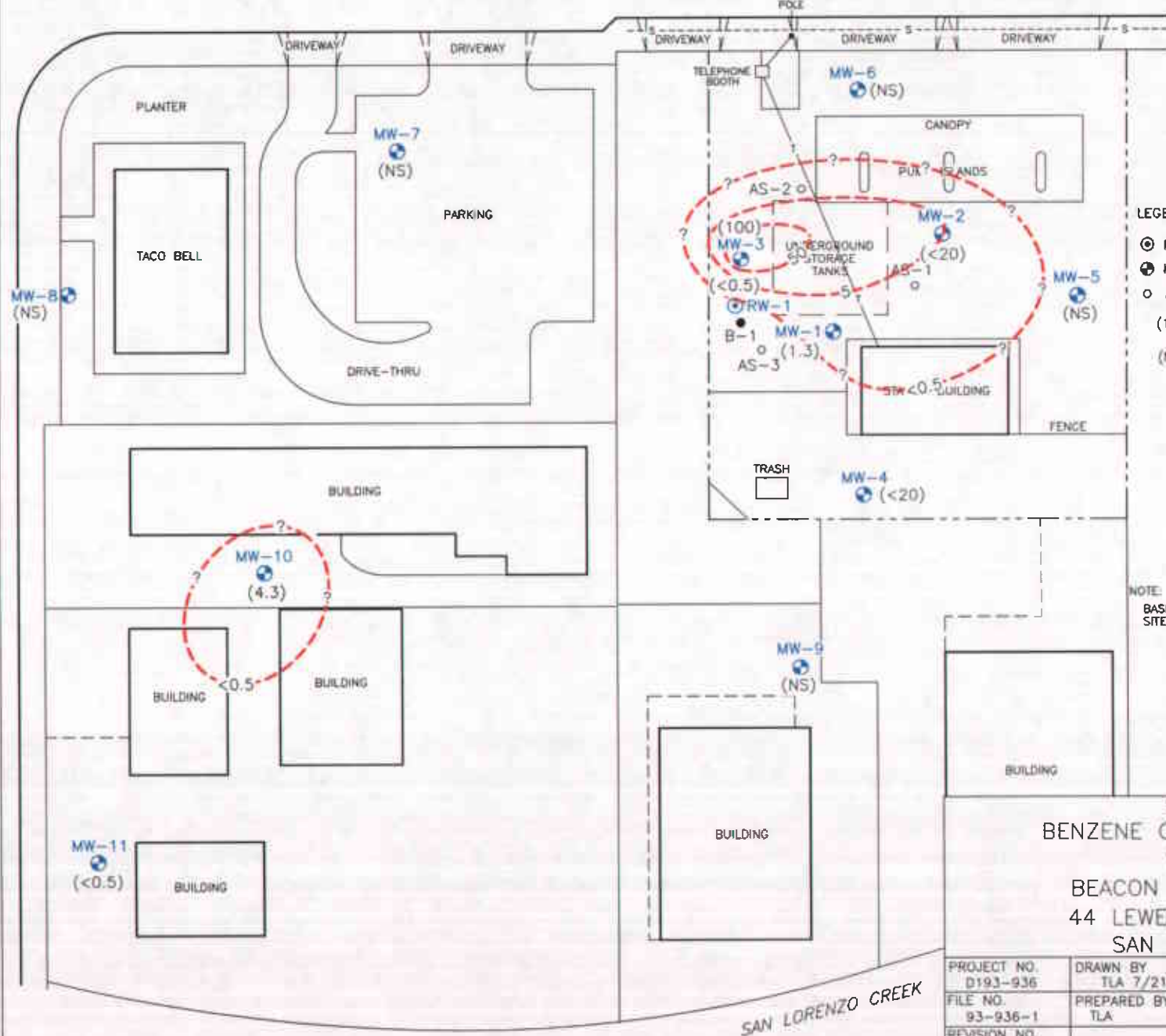
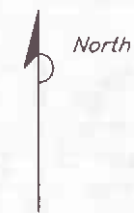
BEACON STATION NO. 721
 44 LEWELLING BOULEVARD
 SAN LORENZO, CA.

PROJECT NO. 0093-936	DRAWN BY ML 12/8/99
FILE NO. 93-936-1A	PREPARED BY TLA
REVISION NO. 4	REVIEWED BY





LEWELLING BOULEVARD



- LEGEND:
- ⊙ RW-1 RECOVERY WELL LOCATION
 - ⊕ MW-1 MONITORING WELL LOCATION
 - AS-1 AIR SPARGING WELL LOCATION
 - (1.3) BENZENE CONCENTRATION IN MICROGRAMS PER LITER (ug/L)
 - (NS) NOT SAMPLED

- UTILITIES
- T— TELEPHONE LINE (OVERHEAD)
 - S--- SEWER LINE (BURIED)

NOTE:
BASE MAP ADAPTED FROM RESNA FIGURE DATED 1/9/92
SITE DIMENSIONS AND FACILITY LOCATIONS NOT VERIFIED



FIGURE 4
BENZENE CONCENTRATION MAP
6/12/00
BEACON STATION NO. 721
44 LEWELLING BOULEVARD
SAN LORENZO, CA.

PROJECT NO. D193-936	DRAWN BY TLA 7/21/00
FILE NO. 93-936-1	PREPARED BY TLA
REVISION NO. 1	



SAN LORENZO CREEK

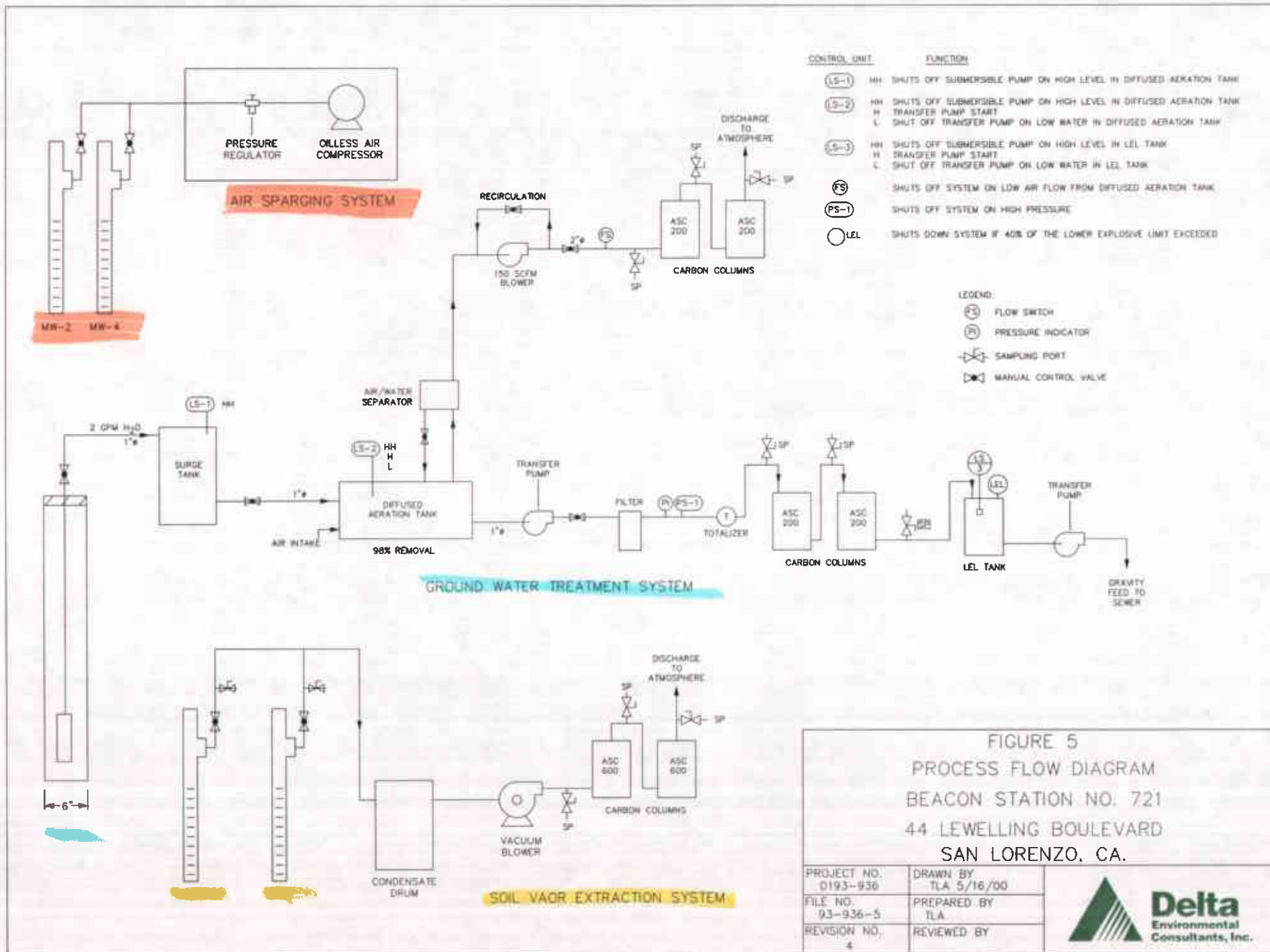


FIGURE 5
 PROCESS FLOW DIAGRAM
 BEACON STATION NO. 721
 44 LEWELLING BOULEVARD
 SAN LORENZO, CA.

PROJECT NO. 0193-936	DRAWN BY TLA 5/16/00
FILE NO. 93-936-5	PREPARED BY TLA
REVISION NO. 4	REVIEWED BY



HISTORICAL BACKGROUND INFORMATION

Beacon Station No. 721
44 Lewelling Boulevard
San Lorenzo, California

PRE - ULTRAMAR INC.

- April 1987 - Three underground gasoline storage tanks were excavated and removed. Samples collected from beneath the former tanks indicated that hydrocarbons were present in the soil.
- May 1987 - Conoco installed three monitoring wells (MW-1 through MW-3). Hydrocarbons were detected in soil and ground-water samples collected from the wells. The site has been on a monitoring program since May 1987.
- December 1988 - Four additional wells (MW-4 through MW-7) were installed. Dissolved-phase hydrocarbons were detected in the new wells.
- September 1989 - Two additional wells (MW-8 and MW-9) were installed.

ULTRAMAR INC.

- July 1990 - Ultramar Inc purchased the site from Conoco. The monitoring program has continued
- March 14, 1991 - Work Plan for additional assessment submitted.
- October 1991 - Drilled two additional offsite wells (MW-10 and MW-11) southwest of the site and one onsite recovery well (RW-1).
- November 1991 - Performed ground-water pump test and vapor extraction test.
- April 1992 - Ultramar submitted an Interim Remediation Plan.
- June 1992 - Interim Remediation Plan was approved.
- March 1993 - Installed the subsurface piping for the remediation system.
- April 1993 - Completed installation of ground-water remediation system.
- June 1993 - Began operation.
- April 1993 - The ground-water extraction system began operation.
- March 1994 - The vapor extraction system began operation.
- June 8, 1994 - Obtained the Permit to Operate for the vapor extraction system.
- December 1995 - Installed an air sparging system.
- January 1997 - Discontinued to operate the remediation system. Approximately 1,184,392 gallons of ground water have been removed, treated, and discharged. Approximately 103 gallons of hydrocarbons have been removed the vapor extraction system.

CONTINUED NEXT PAGE

HISTORICAL BACKGROUND INFORMATION

Beacon Station No. 721
44 Lewelling Boulevard
San Lorenzo, California

ULTRAMAR INC. (continued)

- October 1997 - Drilled confirmation borings. Results indicate soil clean.
- June 1998 - The air sparging system was restarted.
- July 1999 - The ground water system was restarted.
- April 3, 2000 – The soil vapor extraction system was restarted.

END OF SECTION

ENCLOSURE B

Ground Water Sampling Information



3164 Gold Camp Drive, Suite 200
 Rancho Cordova, California 95670
 Direct: (916) 638-2085
 Fax: (916) 638-8385

Site Address: 44 Lewelling Boulevard
San Lorenzo, CA
 Sampled By: Hal Hansen (Doulos)

Site Name: Beacon 721
 Delta Project No.: D193-936
 Date: 06/12/00

Water Level Data					Purge Volume Calculations					Sampling Analytes					Sample Record	
Well ID	Time	Depth to Water (feet)	Depth to Bottom (feet)	D.O. (mg/L)	Casing Water Column*	Well Diameter (inches)	Multiplier Value (**)	Three Casing Volumes (gallons)	Actual Water Purged (gallons)	BTEX (8260) VOA	TPH-g (8260) VOA	MTBE (8260) VOA	TPHd (8015M) Amber	Other	Sample I.D.	Sample Time
MW-1	4:43	15.23	33.6	NM	18.41	2 inch	0.5	9.2	11.7	<input checked="" type="checkbox"/>	<input checked="" type="checkbox"/>	<input checked="" type="checkbox"/>	<input type="checkbox"/>	<input type="checkbox"/>	MW-1	
MW-2	4:50	14.50	34.4	NM	19.85	2 inch	0.5	9.9	12.7	<input checked="" type="checkbox"/>	<input checked="" type="checkbox"/>	<input checked="" type="checkbox"/>	<input type="checkbox"/>	<input type="checkbox"/>	MW-2	
MW-3	4:48	14.31	34.2	NM	19.92	2 inch	0.5	10.0	12.4	<input checked="" type="checkbox"/>	<input checked="" type="checkbox"/>	<input checked="" type="checkbox"/>	<input type="checkbox"/>	<input type="checkbox"/>	MW-3	
MW-4*	4:40	16.26	24.5	NM	8.21	2 inch	0.5	4.1	5.2	<input checked="" type="checkbox"/>	<input checked="" type="checkbox"/>	<input checked="" type="checkbox"/>	<input type="checkbox"/>	<input type="checkbox"/>	MW-4	
MW-5	4:36	15.08	29.3	NM	14.23	2 inch	0.5	7.1		<input type="checkbox"/>	<input type="checkbox"/>	<input type="checkbox"/>	<input type="checkbox"/>	<input type="checkbox"/>		
MW-6	4:32	13.69	28.4	NM	14.73	2 inch	0.5	7.4		<input type="checkbox"/>	<input type="checkbox"/>	<input type="checkbox"/>	<input type="checkbox"/>	<input type="checkbox"/>		
MW-7*	4:21	13.28	24.2	NM	10.91	2 inch	0.5	5.5		<input type="checkbox"/>	<input type="checkbox"/>	<input type="checkbox"/>	<input type="checkbox"/>	<input type="checkbox"/>		
MW-8	4:18	14.19	23.0	NM	8.76	2 inch	0.5	4.4		<input type="checkbox"/>	<input type="checkbox"/>	<input type="checkbox"/>	<input type="checkbox"/>	<input type="checkbox"/>		
MW-9	4:29	16.70	23.6	NM	6.91	2 inch	0.5	3.5		<input type="checkbox"/>	<input type="checkbox"/>	<input type="checkbox"/>	<input type="checkbox"/>	<input type="checkbox"/>		
MW-10	4:13	14.42	29.4	NM	14.99	2 inch	0.5	7.5	9.5	<input checked="" type="checkbox"/>	<input checked="" type="checkbox"/>	<input checked="" type="checkbox"/>	<input type="checkbox"/>	<input type="checkbox"/>	MW-10	
MW-11*	4:10	17.44	29.4	NM	11.91	2 inch	0.5	6.0	7.6	<input checked="" type="checkbox"/>	<input checked="" type="checkbox"/>	<input checked="" type="checkbox"/>	<input type="checkbox"/>	<input type="checkbox"/>	MW-11	
RW-1	4:46	13.65	34.1	NM	20.46	6 inch	4.4	90.0	-	<input checked="" type="checkbox"/>	<input checked="" type="checkbox"/>	<input checked="" type="checkbox"/>	<input type="checkbox"/>	<input type="checkbox"/>	RW-1	
										<input type="checkbox"/>	<input type="checkbox"/>	<input type="checkbox"/>	<input type="checkbox"/>	<input type="checkbox"/>		
										<input type="checkbox"/>	<input type="checkbox"/>	<input type="checkbox"/>	<input type="checkbox"/>	<input type="checkbox"/>		
										<input type="checkbox"/>	<input type="checkbox"/>	<input type="checkbox"/>	<input type="checkbox"/>	<input type="checkbox"/>		
										<input type="checkbox"/>	<input type="checkbox"/>	<input type="checkbox"/>	<input type="checkbox"/>	<input type="checkbox"/>		
										<input type="checkbox"/>	<input type="checkbox"/>	<input type="checkbox"/>	<input type="checkbox"/>	<input type="checkbox"/>		
										<input type="checkbox"/>	<input type="checkbox"/>	<input type="checkbox"/>	<input type="checkbox"/>	<input type="checkbox"/>		
										<input type="checkbox"/>	<input type="checkbox"/>	<input type="checkbox"/>	<input type="checkbox"/>	<input type="checkbox"/>		
										<input type="checkbox"/>	<input type="checkbox"/>	<input type="checkbox"/>	<input type="checkbox"/>	<input type="checkbox"/>		

Purge Method: Pump Bailor Sample Port *Casing Water Column: Depth to Bottom - Depth to Water **Multiplier Values: (2" Well: 0.5) (4" Well: 2.0) (6" Well: 4.4)

Sampling Notes: *Sample MW-4 and MW-11 during 2nd and 4th Quarters Only & MW-7 during the 4th Quarter Only. Original Copies of Field Sampling Sheets are Located in Project File



3154 Gold Camp Drive, Suite 200
 Rancho Cordova, California 95670
 Direct: (916) 638-2085
 Fax: (916) 638-8385

Site Address: 44 Lewelling Boulevard
San Lorenzo, CA
 Sampled By: Hal Hansen (Doulos)

Site Name: Beacon 721
 Delta Project No.: D193-936
 Date: 06/12/00

Well ID	Time	Temp °F	pH Units	Sp. Cond.	Volume	Well ID	Time	Temp °F	pH Units	Sp. Cond.	Volume	Well ID	Time	Temp °F	pH Units	Sp. Cond.	Volume	
MW-1	6:17	72.0	7.12	1,045	1	MW-8												
	6:18	72.3	7.10	1,010	2													
	6:19	72.5	7.08	999	3													
	6:20	71.9	7.04	996	4													
MW-2	6:32	69.3	7.16	1,068	1	MW-9												
	6:33	71.0	7.11	1,051	2													
	6:35	71.5	7.09	1,045	3													
	6:36	71.8	7.09	1,040	4													
MW-3	6:52	71.8	7.20	1,191	1	MW-10	5:19	72.3	7.51	1,051	1							
	6:53	72.0	7.16	1,160	2		5:20	72.5	7.11	1,040	2							
	6:55	72.2	7.13	1,145	3		5:21	72.8	7.08	999	3							
	6:57	72.5	7.12	1,140	4		5:22	73.1	7.09	996	4							
MW-4	5:59	69.3	7.14	1,040	1	MW-11	5:06	70.8	7.35	1,158	1							
	6:00	69.4	7.12	999	2		5:06	71.0	7.30	1,140	2							
	6:01	70.4	7.09	998	3		5:07	71.7	7.22	1,059	3							
	6:02	71.0	7.08	990	4		5:08	71.8	7.20	1,058	4							
MW-5						RW-1	Sample collected from sample port											
MW-6																		
MW-7																		

ENCLOSURE C

Copy of Groundwater Sampling Frequency Letter

ALAMEDA COUNTY
HEALTH CARE SERVICES

AGENCY
DAVID J. KEARS, Agency Director



RECEIVED

JAN 25 1999

StID 1497

January 19, 1999

Mr. Terrence Fox
Ultramar
PO Box 466
Hanford, CA 93232-0406

ENVIRONMENTAL HEALTH SERVICES
1131 Harbor Bay Parkway, Suite 250
Alameda, CA 94502-6577
(510) 567-6700
(510) 337-9335 (FAX)

RE: Groundwater Sampling Frequency at 44 Lewelling Blvd, San Lorenzo, CA

Dear Mr. Fox:

I have completed review of Delta Environmental's January 1999 *Quarterly Groundwater Monitoring Report, Fourth Quarter 1998* prepared for the above referenced site. Groundwater from well MW-2 continues to exhibit elevated levels of MTBE (up to 17,000ppb). Ultramar is planning to restart the vapor extraction system in the first quarter of 1999 to reduce the MTBE levels.

Once the remediation system is operation, please keep me apprised of the effectiveness of MTBE removal from soil and groundwater. At this time, it is appropriate to reduce the groundwater sampling frequency of the various monitoring wells as follows:

- discontinue sampling of wells MW-5, MW-6, MW-8, and MW-9;
- semi-annual sampling of wells MW-4, and MW-11;
- annual sampling of well MW-7; and,
- quarterly sampling of wells MW-1, MW-2, MW-3 and MW-10.

If you have any questions, I can be reached at (510) 567-6762.

eva chu
Hazardous Materials Specialist

ENCLOSURE D

Ground Water Monitoring
Analytical Results



Report Number : 16961

Date : 7/3/00

Richard Munsch
Delta Environmental Consultants, Inc.
3164 Gold Camp Drive, Suite 200
Rancho Cordova, CA 95670

Subject : 7 Water Samples
Project Name : Beacon 721
Project Number : 721

Dear Mr. Munsch,

Chemical analysis of the samples referenced above has been completed. Summaries of the data are contained on the following pages. Sample(s) were received under documented chain-of-custody. US EPA protocols for sample storage and preservation were followed.

Kiff Analytical is certified by the State of California (# 2236). If you have any questions regarding procedures or results, please call me at 530-297-4800.

Sincerely,

A handwritten signature in black ink that reads "Joel Kiff". The signature is written in a cursive style with a large, looped "J" and "K".

Joel Kiff



Report Number : 16961

Date : 7/3/00

Project Name : **Beacon 721**

Project Number : **721**

Sample : **MW-1**

Matrix : Water

Sample Date :6/12/00

Parameter	Measured Value	Method Reporting Limit	Units	Analysis Method	Date Analyzed
Benzene	1.3	1.0	ug/L	EPA 8260B	6/23/00
Toluene	< 1.0	1.0	ug/L	EPA 8260B	6/23/00
Ethylbenzene	< 1.0	1.0	ug/L	EPA 8260B	6/23/00
Total Xylenes	< 1.0	1.0	ug/L	EPA 8260B	6/23/00
Methyl-t-butyl ether	640	10	ug/L	EPA 8260B	6/23/00
TPH as Gasoline	190	100	ug/L	EPA 8260B	6/23/00
Toluene - d8 (Surr)	95.6		% Recovery	EPA 8260B	6/23/00
4-Bromofluorobenzene (Surr)	93.2		% Recovery	EPA 8260B	6/23/00

Sample : **MW-2**

Matrix : Water

Sample Date :6/12/00

Parameter	Measured Value	Method Reporting Limit	Units	Analysis Method	Date Analyzed
Benzene	< 20	20	ug/L	EPA 8260B	6/21/00
Toluene	< 20	20	ug/L	EPA 8260B	6/21/00
Ethylbenzene	< 20	20	ug/L	EPA 8260B	6/21/00
Total Xylenes	< 20	20	ug/L	EPA 8260B	6/21/00
Methyl-t-butyl ether	53000	2000	ug/L	EPA 8260B	6/21/00
TPH as Gasoline	< 2000	2000	ug/L	EPA 8260B	6/21/00
Toluene - d8 (Surr)	96.0		% Recovery	EPA 8260B	6/21/00
4-Bromofluorobenzene (Surr)	97.6		% Recovery	EPA 8260B	6/21/00

Approved By:  Joel Kiff



Report Number : 16961

Date : 7/3/00

Project Name : **Beacon 721**

Project Number : **721**

Sample : **MW-3**

Matrix : Water

Sample Date :6/12/00

Parameter	Measured Value	Method Reporting Limit	Units	Analysis Method	Date Analyzed
Benzene	100	0.50	ug/L	EPA 8260B	6/21/00
Toluene	6.2	0.50	ug/L	EPA 8260B	6/21/00
Ethylbenzene	20	0.50	ug/L	EPA 8260B	6/21/00
Total Xylenes	25	0.50	ug/L	EPA 8260B	6/21/00
Methyl-t-butyl ether	76	5.0	ug/L	EPA 8260B	6/21/00
TPH as Gasoline	920	50	ug/L	EPA 8260B	6/21/00
Toluene - d8 (Surr)	97.3		% Recovery	EPA 8260B	6/21/00
4-Bromofluorobenzene (Surr)	98.8		% Recovery	EPA 8260B	6/21/00

Sample : **MW-4**

Matrix : Water

Sample Date :6/12/00

Parameter	Measured Value	Method Reporting Limit	Units	Analysis Method	Date Analyzed
Benzene	< 20	20	ug/L	EPA 8260B	6/24/00
Toluene	< 20	20	ug/L	EPA 8260B	6/24/00
Ethylbenzene	< 20	20	ug/L	EPA 8260B	6/24/00
Total Xylenes	< 20	20	ug/L	EPA 8260B	6/24/00
Methyl-t-butyl ether	17000	200	ug/L	EPA 8260B	6/24/00
TPH as Gasoline	< 2000	2000	ug/L	EPA 8260B	6/24/00
Toluene - d8 (Surr)	101		% Recovery	EPA 8260B	6/24/00
4-Bromofluorobenzene (Surr)	106		% Recovery	EPA 8260B	6/24/00

Approved By:  Joel Kiff



Report Number : 16961

Date : 7/3/00

Project Name : **Beacon 721**

Project Number : **721**

Sample : **MW-10**

Matrix : Water

Sample Date :6/12/00

Parameter	Measured Value	Method Reporting Limit	Units	Analysis Method	Date Analyzed
Benzene	4.3	0.50	ug/L	EPA 8260B	6/24/00
Toluene	47	0.50	ug/L	EPA 8260B	6/24/00
Ethylbenzene	370	3.0	ug/L	EPA 8260B	6/26/00
Total Xylenes	210	0.50	ug/L	EPA 8260B	6/24/00
Methyl-t-butyl ether	270	5.0	ug/L	EPA 8260B	6/24/00
TPH as Gasoline	7200	300	ug/L	EPA 8260B	6/26/00
Toluene - d8 (Surr)	96.4		% Recovery	EPA 8260B	6/24/00
4-Bromofluorobenzene (Surr)	93.9		% Recovery	EPA 8260B	6/24/00

Sample : **MW-11**

Matrix : Water

Sample Date :6/12/00

Parameter	Measured Value	Method Reporting Limit	Units	Analysis Method	Date Analyzed
Benzene	< 0.50	0.50	ug/L	EPA 8260B	6/24/00
Toluene	< 0.50	0.50	ug/L	EPA 8260B	6/24/00
Ethylbenzene	< 0.50	0.50	ug/L	EPA 8260B	6/24/00
Total Xylenes	< 0.50	0.50	ug/L	EPA 8260B	6/24/00
Methyl-t-butyl ether	49	5.0	ug/L	EPA 8260B	6/24/00
TPH as Gasoline	52	50	ug/L	EPA 8260B	6/24/00
Toluene - d8 (Surr)	95.9		% Recovery	EPA 8260B	6/24/00
4-Bromofluorobenzene (Surr)	90.2		% Recovery	EPA 8260B	6/24/00

Approved By:  Joel Kiff



Report Number : 16961

Date : 7/3/00

Project Name : **Beacon 721**

Project Number : **721**

Sample : **RW-1**

Matrix : Water

Sample Date :6/12/00

Parameter	Measured Value	Method Reporting Limit	Units	Analysis Method	Date Analyzed
Benzene	< 0.50	0.50	ug/L	EPA 8260B	6/24/00
Toluene	< 0.50	0.50	ug/L	EPA 8260B	6/24/00
Ethylbenzene	< 0.50	0.50	ug/L	EPA 8260B	6/24/00
Total Xylenes	1.0	0.50	ug/L	EPA 8260B	6/24/00
Methyl-t-butyl ether	40	5.0	ug/L	EPA 8260B	6/24/00
TPH as Gasoline	< 50	50	ug/L	EPA 8260B	6/24/00
Toluene - d8 (Surr)	94.5		% Recovery	EPA 8260B	6/24/00
4-Bromofluorobenzene (Surr)	90.4		% Recovery	EPA 8260B	6/24/00

Approved By: Joel Kiff



Ultramar Inc.
CHAIN OF CUSTODY REPORT

16961

BEACON

Beacon Station No. 721	Sampler (Print Name) <i>Edgar Chiribian</i>			ANALYSES				Date 6-12-00	Form No. 1 of 1
Project No. 721	Sampler (Signature) <i>[Signature]</i>			BTEX	TPH (gasoline)	TPH (diesel)	No. of Containers	STANDARD TAT	
Project Location SAN LORENZO	Affiliation DOULOS								
Sample No./Identification	Date	Time	Lab No.					REMARKS	
MW-1	6-12-00	6:24	-01	<input checked="" type="checkbox"/>			W		
MW-2		6:43	-02						
MW-3		7:03	-03						
MW-4		6:11	-04						
MW-10		5:29	-05						
MW-11		5:11	-06						
RW-1	✓	7:15	-07	✓			✓		
Relinquished by: (Signature/Affiliation) <i>[Signature] DOULOS</i>			Date	Time	Received by: (Signature/Affiliation)			Date	Time
Relinquished by: (Signature/Affiliation)			Date	Time	Received by: (Signature/Affiliation)			Date	Time
Relinquished by: (Signature/Affiliation)			Date	Time	Received by: (Signature/Affiliation) <i>Agos / K.G.</i>			Date 6/16	Time 1810
Report To: DELTA					Bill to: ULTRAMAR INC. 525 West Third Street Hanford, CA 93230 Attention: JOE A. BRIDGE				

WHITE: Return to Client with Report

YELLOW: Laboratory Copy

PINK: Originator Copy

ENCLOSURE E

Ground Water Treatment System
Analytical Results



Report Number : 16471

Date : 04/24/2000

Richard Munsch
Delta Environmental Consultants, Inc.
3164 Gold Camp Drive, Suite 200
Rancho Cordova, CA 95670

Subject : 4 Water Samples
Project Name : Beacon 721
Project Number :

Dear Mr. Munsch,

Chemical analysis of the samples referenced above has been completed. Summaries of the data are contained on the following pages. Sample(s) were received under documented chain-of-custody. US EPA protocols for sample storage and preservation were followed.

Kiff Analytical is certified by the State of California (# 2236). If you have any questions regarding procedures or results, please call me at 530-297-4800.

Sincerely,

A handwritten signature in black ink that reads "Joel Kiff". The signature is written in a cursive style with a large, looped "J" and "K".

Joel Kiff



Report Number : 16471

Date : 04/24/2000

Project Name : **Beacon 721**

Project Number :

Sample : **W-Inf.**

Matrix : Water

Sample Date :04/13/2000

Parameter	Measured Value	Method Reporting Limit	Units	Analysis Method	Date Analyzed
Benzene	1.9	0.50	ug/L	EPA 8020	04/13/2000
Toluene	< 0.50	0.50	ug/L	EPA 8020	04/13/2000
Ethylbenzene	0.74	0.50	ug/L	EPA 8020	04/13/2000
Total Xylenes	4.6	0.50	ug/L	EPA 8020	04/13/2000
Methyl-t-butyl ether	34	5.0	ug/L	EPA 8020	04/13/2000
TPH as Gasoline	69	50	ug/L	M EPA 8015	04/13/2000
aaa-Trifluorotoluene (8020 Surrogate)	100		% Recovery	EPA 8020	04/13/2000
aaa-Trifluorotoluene (Gasoline Surrogate)	110		% Recovery	M EPA 8015	04/13/2000

Sample : **W-DATS Eff**

Matrix : Water

Sample Date :04/13/2000

Parameter	Measured Value	Method Reporting Limit	Units	Analysis Method	Date Analyzed
Benzene	< 0.50	0.50	ug/L	EPA 8020	04/13/2000
Toluene	< 0.50	0.50	ug/L	EPA 8020	04/13/2000
Ethylbenzene	< 0.50	0.50	ug/L	EPA 8020	04/13/2000
Total Xylenes	< 0.50	0.50	ug/L	EPA 8020	04/13/2000
Methyl-t-butyl ether	< 5.0	5.0	ug/L	EPA 8020	04/13/2000
TPH as Gasoline	< 50	50	ug/L	M EPA 8015	04/13/2000
aaa-Trifluorotoluene (8020 Surrogate)	104		% Recovery	EPA 8020	04/13/2000
aaa-Trifluorotoluene (Gasoline Surrogate)	110		% Recovery	M EPA 8015	04/13/2000

Approved By:  Joel Kiff



Report Number : 16471

Date : 04/24/2000

Project Name : **Beacon 721**

Project Number :

Sample : **W-Mid. Carbon**

Matrix : Water

Sample Date :04/13/2000

Parameter	Measured Value	Method Reporting Limit	Units	Analysis Method	Date Analyzed
Benzene	< 0.50	0.50	ug/L	EPA 8020	04/13/2000
Toluene	< 0.50	0.50	ug/L	EPA 8020	04/13/2000
Ethylbenzene	< 0.50	0.50	ug/L	EPA 8020	04/13/2000
Total Xylenes	< 0.50	0.50	ug/L	EPA 8020	04/13/2000
Methyl-t-butyl ether	< 5.0	5.0	ug/L	EPA 8020	04/13/2000
TPH as Gasoline	< 50	50	ug/L	M EPA 8015	04/13/2000
aaa-Trifluorotoluene (8020 Surrogate)	109		% Recovery	EPA 8020	04/13/2000
aaa-Trifluorotoluene (Gasoline Surrogate)	112		% Recovery	M EPA 8015	04/13/2000

Sample : **W-Effl.**

Matrix : Water

Sample Date :04/13/2000

Parameter	Measured Value	Method Reporting Limit	Units	Analysis Method	Date Analyzed
Benzene	< 0.50	0.50	ug/L	EPA 8020	04/14/2000
Toluene	< 0.50	0.50	ug/L	EPA 8020	04/14/2000
Ethylbenzene	< 0.50	0.50	ug/L	EPA 8020	04/14/2000
Total Xylenes	< 0.50	0.50	ug/L	EPA 8020	04/14/2000
Methyl-t-butyl ether	< 5.0	5.0	ug/L	EPA 8020	04/14/2000
TPH as Gasoline	< 50	50	ug/L	M EPA 8015	04/14/2000
aaa-Trifluorotoluene (8020 Surrogate)	106		% Recovery	EPA 8020	04/14/2000
aaa-Trifluorotoluene (Gasoline Surrogate)	111		% Recovery	M EPA 8015	04/14/2000

Approved By:  Joel Kiff

CLS Labs

Joel Kiff
720 Olive Drive,
Suite D
Davis, CA 95616

04/20/2000

Attention: Joel Kiff

Reference: Analytical Results

Project Name: Beacon 721
Project No.:
Date Received: 04/13/2000
Chain Of Custody: 16471

CLS ID No.: R8883
CLS Job No.: 828883

The following analyses were performed on the above referenced project:

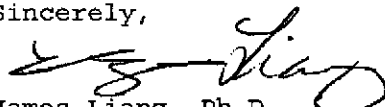
<u>No. of Samples</u>	<u>Turnaround Time</u>	<u>Analysis Description</u>
1	5 Days	Total Suspended Solids, EPA Method 160.2
1	5 Days	Chemical Oxygen Demand, EPA Method 410.4
1	5 Days	pH, EPA Method 9040

These samples were received by CLS Labs in a chilled, intact state and accompanied by a valid chain of custody document.

Calibrations for analytical testing have been performed in accordance to and pass the EPA's criteria for acceptability.

Analytical results are attached to this letter. Please call if we can provide additional assistance.

Sincerely,



James Liang, Ph.D.
Laboratory Director

CLS Labs

Analysis Report: Total Suspended Solids, EPA Method 160.2

Client: Joel Kiff
720 Olive Drive,
Suite D
Davis, CA 95616

Project No.:
Contact: Joel Kiff
Phone: (530)297-4800

Project: Beacon 721

Lab Contact: James Liang
Lab ID No.: R9883
Job No.: 828883
COC Log No.: 16471
Batch No.: WY2K0413S
Instrument ID: BA005
Analyst ID: PONGC
Matrix: WATER

Date Sampled: 04/13/2000
Date Received: 04/13/2000
Date Extracted: N/A
Date Analyzed: 04/17/2000
Date Reported: 04/20/2000

ANALYTICAL RESULTS

Lab / Client ID Analyte	CAS No.	Results (mg/L)	Rep. Limit (mg/L)	Dilution (factor)
1A / W-Effl. Total Suspended Solids	N/A	ND	5.0	1.0

ND = Not detected at or above indicated Reporting Limit

CLS Labs

Analysis Report: Chemical Oxygen Demand, EPA Method 410.4

Client: Joel Kiff
720 Olive Drive,
Suite D
Davis, CA 95616

Project No.:
Contact: Joel Kiff
Phone: (530)297-4800

Project: Beacon 721

Lab Contact: James Liang
Lab ID No.: R8883
Job No.: 828883
COC Log No.: 16471
Batch No.: WY2K0413S
Instrument ID: UV002
Analyst ID: PONGC
Matrix: WATER

Date Sampled: 04/13/2000
Date Received: 04/13/2000
Date Extracted: N/A
Date Analyzed: 04/19/2000
Date Reported: 04/20/2000

ANALYTICAL RESULTS

Lab / Client ID Analyte	CAS No.	Results (mg/L)	Rep. Limit (mg/L)	Dilution (factor)
1A / W-Effl. Chemical Oxygen Demand	N/A	ND	10	1.0

ND = Not detected at or above indicated Reporting Limit

CLS Labs

Analysis Report: pH, EPA Method 9040

Client: Joel Kiff
720 Olive Drive,
Suite D
Davis, CA 95616

Project No.:
Contact: Joel Kiff
Phone: (530)297-4800

Project: Beacon 721

Date Sampled: 04/13/2000
Date Received: 04/13/2000
Date Extracted: N/A
Date Analyzed: 04/14/2000
Date Reported: 04/20/2000

Lab Contact: James Liang
Lab ID No.: R8883
Job No.: 828883
COC Log No.: 16471
Batch No.: WY2K0413S
Instrument ID: PH002
Analyst ID: PONGC
Matrix: WATER

ANALYTICAL RESULTS

Lab / Client ID Analyte	CAS No.	Value (Standard Units)
1A / W-Effl. pH	N/A	7.43

16471

165080

KIFF ANALYTICAL SUBCONTRACT FORM

Please mail results to :

Please fax to :

JOEL KIFF
KIFF ANALYTICAL
720 OLIVE DRIVE, SUITE D
DAVIS, CA 95616

530-297-4803

Subcontract Lab:

CLS Labs

3249 Fitzgerald Rd.

Rancho, Cordova, CA 95742

916-638-7301

Account No. :

PROJECT NAME : Beacon 721

PROJECT NUMBER:

Sample	Matrix	Sampled	Tests	Due	Container
W-Effl.	WA	04/13/2000	Chemical Oxygen Demand	04/20/2000	
W-Effl.	WA	04/13/2000	pH	04/20/2000	
W-Effl.	WA	04/13/2000	Total Suspended Solids	04/20/2000	

Relinquished by :

Andreas Agues

Date/Time:

4/12/00 / 1805

Received by:

[Signature]

Relinquished by :

Date/Time:

Received by:

Relinquished by :

Date/Time:

Received by:



Ulramar Inc.
CHAIN OF CUSTODY REPORT

BEACON

16471

Beacon Station No. 721		Sampler (Print Name) Charles B. Parker			ANALYSES		Date 4-13-00	Form No. 1 of 1			
Project No. _____		Sampler (Signature) <i>[Signature]</i>			BTEX	TPH (gasoline)	TPH (diesel)	MTBE	PH, CO ₂ , S.S.	No. of Containers	REMARKS Normal Turnaround
Project Location San Lorenzo, CA		Affiliation WSIS									
Sample No./Identification	Date	Time	Lab No.	BTEX	TPH (gasoline)	TPH (diesel)	MTBE	PH, CO ₂ , S.S.	No. of Containers	REMARKS	
W- Inf.	4-13-00	1230	-01	<input checked="" type="checkbox"/>	<input checked="" type="checkbox"/>	<input checked="" type="checkbox"/>	<input checked="" type="checkbox"/>		3		
W- DATS Eff	4-13-00	1233	-02	<input checked="" type="checkbox"/>	<input checked="" type="checkbox"/>	<input checked="" type="checkbox"/>	<input checked="" type="checkbox"/>		3		
W- Mid. Carbon	4-13-00	1235	-03	<input checked="" type="checkbox"/>	<input checked="" type="checkbox"/>	<input checked="" type="checkbox"/>	<input checked="" type="checkbox"/>		3		
W- Effl.	4-13-00	1240	-04	<input checked="" type="checkbox"/>	<input checked="" type="checkbox"/>	<input checked="" type="checkbox"/>	<input checked="" type="checkbox"/>		4		
Relinquished by: (Signature/Affiliation) <i>[Signature]</i> / WSIS		Date 4/13/00	Time 1255	Received by: (Signature/Affiliation) <i>[Signature]</i>				Date	Time		
Relinquished by: (Signature/Affiliation) <i>[Signature]</i>		Date	Time	Received by: (Signature/Affiliation) <i>[Signature]</i>				Date	Time		
Relinquished by: (Signature/Affiliation) <i>[Signature]</i>		Date	Time	Received by: (Signature/Affiliation) Richard Pray / Keff				Date 4/13/00	Time 1255		
Report To: Richard Munsey Delta Environmental				Bill to: ULTRAMAR INC. 525 West Third Street Hanford, CA 93230 Attention: Jae Melbridge							

WHITE: Return to Client with Report

YELLOW: Laboratory Copy

PINK: Originator Copy



Report Number : 16644

Date : 5/19/00

Richard Munsch
Delta Environmental Consultants, Inc.
3164 Gold Camp Drive, Suite 200
Rancho Cordova, CA 95670

Subject : 4 Water Samples
Project Name : Beacon 721
Project Number :

Dear Mr. Munsch,

Chemical analysis of the samples referenced above has been completed. Summaries of the data are contained on the following pages. Sample(s) were received under documented chain-of-custody. US EPA protocols for sample storage and preservation were followed.

Kiff Analytical is certified by the State of California (# 2236). If you have any questions regarding procedures or results, please call me at 530-297-4800.

Sincerely,

A handwritten signature in black ink that reads "Joel Kiff". The signature is written in a cursive style with a large initial "J".

Joel Kiff



Report Number : 16644

Date : 5/19/00

Project Name : **Beacon 721**

Project Number :

Sample : **W-Effl.**

Matrix : Water

Sample Date :5/10/00

Parameter	Measured Value	Method Reporting Limit	Units	Analysis Method	Date Analyzed
Benzene	< 0.50	0.50	ug/L	EPA 8260B	5/12/00
Toluene	< 0.50	0.50	ug/L	EPA 8260B	5/12/00
Ethylbenzene	< 0.50	0.50	ug/L	EPA 8260B	5/12/00
Total Xylenes	< 0.50	0.50	ug/L	EPA 8260B	5/12/00
Methyl-t-butyl ether	< 5.0	5.0	ug/L	EPA 8260B	5/12/00
TPH as Gasoline	< 50	50	ug/L	EPA 8260B	5/12/00
Toluene - d8 (Surr)	99.2		% Recovery	EPA 8260B	5/12/00
4-Bromofluorobenzene (Surr)	101		% Recovery	EPA 8260B	5/12/00

Sample : **W-Carb. M.P.**

Matrix : Water

Sample Date :5/10/00

Parameter	Measured Value	Method Reporting Limit	Units	Analysis Method	Date Analyzed
Benzene	< 0.50	0.50	ug/L	EPA 8260B	5/12/00
Toluene	0.56	0.50	ug/L	EPA 8260B	5/12/00
Ethylbenzene	< 0.50	0.50	ug/L	EPA 8260B	5/12/00
Total Xylenes	< 0.50	0.50	ug/L	EPA 8260B	5/12/00
Methyl-t-butyl ether	< 5.0	5.0	ug/L	EPA 8260B	5/12/00
TPH as Gasoline	< 50	50	ug/L	EPA 8260B	5/12/00
Toluene - d8 (Surr)	102		% Recovery	EPA 8260B	5/12/00
4-Bromofluorobenzene (Surr)	100		% Recovery	EPA 8260B	5/12/00

Approved By:  Joel Kiff



Report Number : 16644

Date : 5/19/00

Project Name : **Beacon 721**

Project Number :

Sample : **W-DATS Effl.**

Matrix : Water

Sample Date :5/10/00

Parameter	Measured Value	Method Reporting Limit	Units	Analysis Method	Date Analyzed
Benzene	< 0.50	0.50	ug/L	EPA 8260B	5/12/00
Toluene	1.2	0.50	ug/L	EPA 8260B	5/12/00
Ethylbenzene	< 0.50	0.50	ug/L	EPA 8260B	5/12/00
Total Xylenes	1.3	0.50	ug/L	EPA 8260B	5/12/00
Methyl-t-butyl ether	< 5.0	5.0	ug/L	EPA 8260B	5/12/00
TPH as Gasoline	< 50	50	ug/L	EPA 8260B	5/12/00
Toluene - d8 (Surr)	100		% Recovery	EPA 8260B	5/12/00
4-Bromofluorobenzene (Surr)	101		% Recovery	EPA 8260B	5/12/00

Sample : **W-Inf.**

Matrix : Water

Sample Date :5/10/00

Parameter	Measured Value	Method Reporting Limit	Units	Analysis Method	Date Analyzed
Benzene	13	0.50	ug/L	EPA 8260B	5/12/00
Toluene	1.3	0.50	ug/L	EPA 8260B	5/12/00
Ethylbenzene	< 0.50	0.50	ug/L	EPA 8260B	5/12/00
Total Xylenes	5.0	0.50	ug/L	EPA 8260B	5/12/00
Methyl-t-butyl ether	76	5.0	ug/L	EPA 8260B	5/12/00
TPH as Gasoline	< 50	50	ug/L	EPA 8260B	5/12/00
Toluene - d8 (Surr)	102		% Recovery	EPA 8260B	5/12/00
4-Bromofluorobenzene (Surr)	101		% Recovery	EPA 8260B	5/12/00

Approved By:  Joel Kiff

CLS Labs

05/17/2000

Joel Kiff
720 Olive Drive,
Suite D
Davis, CA 95616

Attention: Joel Kiff

Reference: Analytical Results

Project Name: Beacon 721
Project No.:
Date Received: 05/11/2000
Chain Of Custody: 16644

CLS ID No.: R9527
CLS Job No.: 829527

The following analyses were performed on the above referenced project:

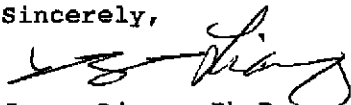
<u>No. of Samples</u>	<u>Turnaround Time</u>	<u>Analysis Description</u>
1	4 Days	Total Suspended Solids, EPA Method 160.2
1	4 Days	Chemical Oxygen Demand, EPA Method 410.4
1	4 Days	pH, EPA Method 9040

These samples were received by CLS Labs in a chilled, intact state and accompanied by a valid chain of custody document.

Calibrations for analytical testing have been performed in accordance to and pass the EPA's criteria for acceptability.

Analytical results are attached to this letter. Please call if we can provide additional assistance.

Sincerely,



James Liang, Ph.D.
Laboratory Director

CLS Labs

Analysis Report: Total Suspended Solids, EPA Method 160.2

Client: Joel Kiff
720 Olive Drive,
Suite D
Davis, CA 95616

Project No.:
Contact: Joel Kiff
Phone: (530)297-4800

Project: Beacon 721

Date Sampled: 05/10/2000
Date Received: 05/11/2000
Date Extracted: N/A
Date Analyzed: 05/12/2000
Date Reported: 05/17/2000

Lab Contact: James Liang
Lab ID No.: R9527
Job No.: 829527
COC Log No.: 16644
Batch No.: WY2K05111
Instrument ID: BA005
Analyst ID: PONGC
Matrix: WATER

ANALYTICAL RESULTS

Lab / Client ID Analyte	CAS No.	Results (mg/L)	Rep. Limit (mg/L)	Dilution (factor)
1A / W-Effl. Total Suspended Solids	N/A	ND	5.0	1.0

ND = Not detected at or above indicated Reporting Limit

CLS Labs

Analysis Report: Chemical Oxygen Demand, EPA Method 410.4

Client: Joel Kiff
720 Olive Drive,
Suite D
Davis, CA 95616

Project No.:
Contact: Joel Kiff
Phone: (530)297-4800

Project: Beacon 721

Date Sampled: 05/10/2000
Date Received: 05/11/2000
Date Extracted: N/A
Date Analyzed: 05/16/2000
Date Reported: 05/17/2000

Lab Contact: James Liang
Lab ID No.: R9527
Job No.: 829527
COC Log No.: 16644
Batch No.: WY2K0511I
Instrument ID: UV002
Analyst ID: PONGC
Matrix: WATER

ANALYTICAL RESULTS

Lab / Client ID Analyte	CAS No.	Results (mg/L)	Rep. Limit (mg/L)	Dilution (factor)
1A / W-Effl. Chemical Oxygen Demand	N/A	ND	10	1.0

ND = Not detected at or above indicated Reporting Limit

CLS Labs

Analysis Report: pH, EPA Method 9040

Client: Joel Kiff
720 Olive Drive,
Suite D
Davis, CA 95616

Project No.:
Contact: Joel Kiff
Phone: (530)297-4800

Project: Beacon 721

Date Sampled: 05/10/2000
Date Received: 05/11/2000
Date Extracted: N/A
Date Analyzed: 05/11/2000
Date Reported: 05/17/2000

Lab Contact: James Liang
Lab ID No.: R9527
Job No.: 829527
COC Log No.: 16644
Batch No.: WY2K0511I
Instrument ID: PH002
Analyst ID: PONGC
Matrix: WATER

ANALYTICAL RESULTS

Lab / Client ID Analyte	CAS No.	Value (Standard Units)
1A / W-Effl. pH	N/A	8.19

16644

K4527

KIFF ANALYTICAL SUBCONTRACT FORM

Subcontract Lab:

CLS Labs

Please mail results to :

Please fax to :

3249 Fitzgerald Rd.

JOEL KIFF
KIFF ANALYTICAL
720 OLIVE DRIVE, SUITE D
DAVIS, CA 95616

530-297-4803

Rancho, Cordova, CA 95742

916-638-7301

Account No. :

PROJECT NAME : Beacon 721

PROJECT NUMBER:

Sample	Matrix	Sampled	Tests	Due	Container
W-Effl.	WA	05/10/2000	Chemical Oxygen Demand	05/17/2000	
W-Effl.	WA	05/10/2000	pH	05/17/2000	
W-Effl.	WA	05/10/2000	Total Suspended Solids	05/17/2000	

Relinquished by : *Maury Benginger / Kiff Analytical*

Date/Time: 05-11-00 15:41

Received by: *[Signature]* **CONRAD CLS-**

Relinquished by : *[Signature]*

Date/Time: 5/11/00-16:00

Received by: *[Signature]*

Relinquished by : _____

Date/Time: _____

Received by: _____



Ultramar Inc.
CHAIN OF CUSTODY REPORT

16644

BEACON

Beacon Station No. 721		Sampler (Print Name) Charles E. Parker			ANALYSES			Date 5-10-00	Form No. 1 of 1		
Project No. _____		Sampler (Signature) <i>[Signature]</i>			BTEX	TPH (gasoline)	TPH (diesel)	MTBE	PH, COP, S.S.		
Project Location San Lorenzo, CA		Affiliation WSIS								No. of Containers	REMARKS Normal Turnaround
Sample No./Identification	Date	Time	Lab No.								
W- Effl.	5-10-00	0850	-01	✓	✓	✓	✓	4			
W- Carb. M.P.	5-10-00	0855	-02	✓	✓	✓		3			
W- OATS Effl.	5-10-00	0858	-03	✓	✓	✓		3			
W- Inf.	5-10-00	0900	-04	✓	✓	✓		3			
Relinquished by: (Signature/Affiliation) <i>[Signature]</i> / WSIS		Date 5/10/00	Time 0915	Received by: (Signature/Affiliation) _____			Date	Time			
Relinquished by: (Signature/Affiliation) _____		Date	Time	Received by: (Signature/Affiliation) _____			Date	Time			
Relinquished by: (Signature/Affiliation) _____		Date	Time	Received by: (Signature/Affiliation) <i>[Signature]</i> / WSIS			Date 5/10/00	Time 9:20			
Report To: Richard Munsch Delta Environmental				Bill to: ULTRAMAR INC. 525 West Third Street Hanford, CA 93230 Attention: <i>[Signature]</i> Aldridge							

WHITE: Return to Client with Report

YELLOW: Laboratory Copy

PINK: Originator Copy



Report Number : 16886

Date : 6/20/00

Richard Munsch
Delta Environmental Consultants, Inc.
3164 Gold Camp Drive, Suite 200
Rancho Cordova, CA 95670

Subject : 4 Water Samples
Project Name : Beacon 721
Project Number :

Dear Mr. Munsch,

Chemical analysis of the samples referenced above has been completed. Summaries of the data are contained on the following pages. Sample(s) were received under documented chain-of-custody. US EPA protocols for sample storage and preservation were followed.

Kiff Analytical is certified by the State of California (# 2236). If you have any questions regarding procedures or results, please call me at 530-297-4800.

Sincerely,

A handwritten signature in black ink that reads "Joel Kiff". The signature is written in a cursive style with a large, looping initial "J".

Joel Kiff



Report Number : 16886

Date : 6/20/00

Project Name : **Beacon 721**

Project Number :

Sample : **W-Inf.**

Matrix : Water

Sample Date :6/8/00

Parameter	Measured Value	Method Reporting Limit	Units	Analysis Method	Date Analyzed
Benzene	29	0.50	ug/L	EPA 8260B	6/17/00
Toluene	1.1	0.50	ug/L	EPA 8260B	6/17/00
Ethylbenzene	< 0.50	0.50	ug/L	EPA 8260B	6/17/00
Total Xylenes	1.8	0.50	ug/L	EPA 8260B	6/17/00
Methyl-t-butyl ether	170	5.0	ug/L	EPA 8260B	6/17/00
TPH as Gasoline	73	50	ug/L	EPA 8260B	6/17/00
Toluene - d8 (Surr)	100		% Recovery	EPA 8260B	6/17/00
4-Bromofluorobenzene (Surr)	99.9		% Recovery	EPA 8260B	6/17/00

Sample : **W-Dats Effl.**

Matrix : Water

Sample Date :6/8/00

Parameter	Measured Value	Method Reporting Limit	Units	Analysis Method	Date Analyzed
Benzene	< 0.50	0.50	ug/L	EPA 8260B	6/16/00
Toluene	1.0	0.50	ug/L	EPA 8260B	6/16/00
Ethylbenzene	< 0.50	0.50	ug/L	EPA 8260B	6/16/00
Total Xylenes	1.4	0.50	ug/L	EPA 8260B	6/16/00
Methyl-t-butyl ether	< 5.0	5.0	ug/L	EPA 8260B	6/16/00
TPH as Gasoline	50	50	ug/L	EPA 8260B	6/16/00
Toluene - d8 (Surr)	99.3		% Recovery	EPA 8260B	6/16/00
4-Bromofluorobenzene (Surr)	100		% Recovery	EPA 8260B	6/16/00

Approved By:  Joel Kiff



Report Number : 16886

Date : 6/20/00

Project Name : **Beacon 721**

Project Number :

Sample : **W-Carb. M.P.**

Matrix : Water

Sample Date :6/8/00

Parameter	Measured Value	Method Reporting Limit	Units	Analysis Method	Date Analyzed
Benzene	< 0.50	0.50	ug/L	EPA 8260B	6/17/00
Toluene	0.72	0.50	ug/L	EPA 8260B	6/17/00
Ethylbenzene	< 0.50	0.50	ug/L	EPA 8260B	6/17/00
Total Xylenes	0.96	0.50	ug/L	EPA 8260B	6/17/00
Methyl-t-butyl ether	< 5.0	5.0	ug/L	EPA 8260B	6/17/00
TPH as Gasoline	< 50	50	ug/L	EPA 8260B	6/17/00
Toluene - d8 (Surr)	99.9		% Recovery	EPA 8260B	6/17/00
4-Bromofluorobenzene (Surr)	101		% Recovery	EPA 8260B	6/17/00

Sample : **W-Effi.**

Matrix : Water

Sample Date :6/8/00

Parameter	Measured Value	Method Reporting Limit	Units	Analysis Method	Date Analyzed
Benzene	< 0.50	0.50	ug/L	EPA 8260B	6/17/00
Toluene	1.0	0.50	ug/L	EPA 8260B	6/17/00
Ethylbenzene	< 0.50	0.50	ug/L	EPA 8260B	6/17/00
Total Xylenes	1.5	0.50	ug/L	EPA 8260B	6/17/00
Methyl-t-butyl ether	< 5.0	5.0	ug/L	EPA 8260B	6/17/00
TPH as Gasoline	< 50	50	ug/L	EPA 8260B	6/17/00
Toluene - d8 (Surr)	99.4		% Recovery	EPA 8260B	6/17/00
4-Bromofluorobenzene (Surr)	101		% Recovery	EPA 8260B	6/17/00

Approved By:  Joel Kiff

CLS Labs

Joel Kiff
720 Olive Drive,
Suite D
Davis, CA 95616

06/19/2000

Attention: Joel Kiff

Reference: Analytical Results

Project Name: Beacon 721
Project No.: 16886
Date Received: 06/08/2000
Chain Of Custody: 16886

CLS ID No.: 90155
CLS Job No.: 830155

The following analyses were performed on the above referenced project:

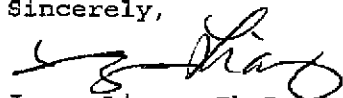
<u>No. of Samples</u>	<u>Turnaround Time</u>	<u>Analysis Description</u>
1	5 Days	Total Suspended Solids, EPA Method 160.2
1	5 Days	Chemical Oxygen Demand, EPA Method 410.4
1	5 Days	pH, EPA Method 9040

These samples were received by CLS Labs in a chilled, intact state and accompanied by a valid chain of custody document.

Calibrations for analytical testing have been performed in accordance to and pass the EPA's criteria for acceptability.

Analytical results are attached to this letter. Please call if we can provide additional assistance.

Sincerely,



James Liang, Ph.D.
Laboratory Director

CLS Labs

Analysis Report: Total Suspended Solids, EPA Method 160.2

Client: Joel Kiff
720 Olive Drive,
Suite D
Davis, CA 95616

Project No.: 16886
Contact: Joel Kiff
Phone: (530)297-4800

Project: Beacon 721

Lab Contact: James Liang
Lab ID No.: 80155
Job No.: 830155
COC Log No.: 16886
Batch No.: WY2K0608J
Instrument ID: BA005
Analyst ID: PONGC
Matrix: WATER

Date Sampled: 06/08/2000
Date Received: 06/08/2000
Date Extracted: N/A
Date Analyzed: 06/14/2000
Date Reported: 06/15/2000

ANALYTICAL RESULTS

Lab / Client ID Analyte	CAS No.	Results (mg/L)	Rep. Limit (mg/L)	Dilution (factor)
1A / W-Effl. Total Suspended Solids	N/A	ND	5.0	1.0

ND = Not detected at or above indicated Reporting Limit

CLS Labs

Analysis Report: Chemical Oxygen Demand, EPA Method 410.4

Client: Joel Kiff
720 Olive Drive,
Suite D
Davis, CA 95616

Project No.: 16886
Contact: Joel Kiff
Phone: (530)297-4800

Project: Beacon 721

Date Sampled: 06/08/2000
Date Received: 06/08/2000
Date Extracted: N/A
Date Analyzed: 06/12/2000
Date Reported: 06/15/2000

Lab Contact: James Liang
Lab ID No.: S0155
Job No.: 830155
COC Log No.: 16886
Batch No.: WY2K0608J
Instrument ID: UV002
Analyst ID: PONGC
Matrix: WATER

ANALYTICAL RESULTS

Lab / Client ID Analyte	CAS No.	Results (mg/L)	Rep. Limit (mg/L)	Dilution (factor)
1A / W-Effl. Chemical Oxygen Demand	N/A	ND	10	1.0

ND = Not detected at or above indicated Reporting Limit

CLS Labs

Analysis Report: pH, EPA Method 9040

Client: Joel Kiff
720 Olive Drive,
Suite D
Davis, CA 95616

Project No.: 16886
Contact: Joel Kiff
Phone: (530)297-4800

Project: Beacon 721

Lab Contact: James Liang
Lab ID No.: S0155
Job No.: 830155
COC Log No.: 16886
Batch No.: WY2K0608J
Instrument ID: PH002
Analyst ID: PONGC
Matrix: WATER

Date Sampled: 06/08/2000
Date Received: 06/08/2000
Date Extracted: N/A
Date Analyzed: 06/09/2000
Date Reported: 06/15/2000

ANALYTICAL RESULTS

Lab / Client ID Analyte	CAS No.	Value (Standard Units)
1A / W-Effl. pH	N/A	8.02



Ultramar Inc.
CHAIN OF CUSTODY REPORT

16886

BEACON

Beacon Station No. 721		Sampler (Print Name) Charles E. Payler			ANALYSES				Date 6-8-00	Form No. 2 of 1	
Project No. _____		Sampler (Signature) <i>[Signature]</i>			BTEX	TPH (gasoline)	TPH (diesel)	BC MTBE	PH, COD, S.S.	No. of Containers	REMARKS Normal Turnaround
Project Location San Lorenzo, CA		Affiliation WRS									
Sample No./Identification	Date	Time	Lab No.								
W- Ind.	6-8-00	1246	-01	✓	✓	✓	✓		3		
W- DATS Effl.	6-8-00	1255	-02	✓	✓	✓	✓		3		
W- Carbo M.P.	6-8-00	1300	-03	✓	✓	✓	✓		3		
W- Effl.	6-8-00	1308	-04	✓	✓	✓	✓		4		
Relinquished by: (Signature/Affiliation) <i>[Signature]</i>				Date 6/8/00	Time 1315	Received by: (Signature/Affiliation)				Date	Time
Relinquished by: (Signature/Affiliation)				Date	Time	Received by: (Signature/Affiliation)				Date	Time
Relinquished by: (Signature/Affiliation)				Date	Time	Received by: (Signature/Affiliation) <i>[Signature]</i>				Date 6/8/00	Time 1215
Report To: Richard Munsch Delta Environmental						Bill to: ULTRAMAR INC. 525 West Third Street Hanford, CA 93230 Attention: <u>Doc Aldridge</u>					

WHITE: Return to Client with Report

YELLOW: Laboratory Copy

PINK: Originator Copy

ENCLOSURE F

Soil Vapor Extraction System
Analytical Results



Report Number : 16429

Date : 4/14/00

Richard Munsch
Delta Environmental Consultants, Inc.
3164 Gold Camp Drive, Suite 200
Rancho Cordova, CA 95670

Subject : 3 Air Samples
Project Name : Beacon 721
Project Number : DO93-936

Dear Mr. Munsch,

Chemical analysis of the samples referenced above has been completed. Summaries of the data are contained on the following pages. Sample(s) were received under documented chain-of-custody. US EPA protocols for sample storage and preservation were followed.

Kiff Analytical is certified by the State of California (# 2236). If you have any questions regarding procedures or results, please call me at 530-297-4800.

Sincerely,

A handwritten signature in black ink that reads "Joel Kiff". The signature is written in a cursive style with a large, looped "J" and "K".

Joel Kiff



Report Number : 16429

Date : 4/14/00

Project Name : **Beacon 721**

Project Number : **DO93-936**

Sample : **INF AIR**

Matrix : Air

Sample Date :4/7/00

Parameter	Measured Value	Method Reporting Limit	Units	Analysis Method	Date Analyzed
Benzene	< 0.050	0.050	Molar ppm	EPA 8020	4/7/00
Toluene	< 0.050	0.050	Molar ppm	EPA 8020	4/7/00
Ethylbenzene	< 0.050	0.050	Molar ppm	EPA 8020	4/7/00
Total Xylenes	< 0.050	0.050	Molar ppm	EPA 8020	4/7/00
TPH as Gasoline	< 5.0	5.0	Molar ppm	M EPA 8015	4/7/00
aaa-Trifluorotoluene (8020 Surrogate)	96.6		% Recovery	EPA 8020	4/7/00
aaa-Trifluorotoluene (Gasoline Surrogate)	103		% Recovery	M EPA 8015	4/7/00

Sample : **MID AIR**

Matrix : Air

Sample Date :4/7/00

Parameter	Measured Value	Method Reporting Limit	Units	Analysis Method	Date Analyzed
Benzene	< 0.050	0.050	Molar ppm	EPA 8020	4/7/00
Toluene	< 0.050	0.050	Molar ppm	EPA 8020	4/7/00
Ethylbenzene	< 0.050	0.050	Molar ppm	EPA 8020	4/7/00
Total Xylenes	< 0.050	0.050	Molar ppm	EPA 8020	4/7/00
TPH as Gasoline	< 5.0	5.0	Molar ppm	M EPA 8015	4/7/00
aaa-Trifluorotoluene (8020 Surrogate)	95.2		% Recovery	EPA 8020	4/7/00
aaa-Trifluorotoluene (Gasoline Surrogate)	103		% Recovery	M EPA 8015	4/7/00

Approved By:  Joel Kiff



Report Number : 16429

Date : 4/14/00

Project Name : **Beacon 721**

Project Number : **DO93-936**

Sample : **EFF AIR**

Matrix : Air

Sample Date :4/7/00

Parameter	Measured Value	Method Reporting Limit	Units	Analysis Method	Date Analyzed
Benzene	< 0.050	0.050	Molar ppm	EPA 8020	4/7/00
Toluene	< 0.050	0.050	Molar ppm	EPA 8020	4/7/00
Ethylbenzene	< 0.050	0.050	Molar ppm	EPA 8020	4/7/00
Total Xylenes	< 0.050	0.050	Molar ppm	EPA 8020	4/7/00
TPH as Gasoline	< 5.0	5.0	Molar ppm	M EPA 8015	4/7/00
aaa-Trifluorotoluene (8020 Surrogate)	99.8		% Recovery	EPA 8020	4/7/00
aaa-Trifluorotoluene (Gasoline Surrogate)	102		% Recovery	M EPA 8015	4/7/00

Approved By:  Joel Kiff



Ultrammar Inc.
CHAIN OF CUSTODY REPORT

BEACON

16429

Beacon Station No. 721		Sampler (Print Name) Chris Hill			ANALYSES				Date 4.7.00	Form No. 1 of 1	
Project No. D093-936		Sampler (Signature) <i>[Signature]</i>							No. of Containers		
Project Location SAN LORENZO		Affiliation V. Ka			BTEX	TPH (gasoline)	TPH (diesel)				
Sample No./Identification	Date	Time	Lab No.	BTEX	TPH (gasoline)	TPH (diesel)	No. of Containers		REMARKS		
EIF Air	4.7.00	0536	-01	X	X		1				
MID Air	\	0534	-02	X	X		1				
EIF Air	4.7.00	0532	-03	X	X		1				
Relinquished by: (Signature/Affiliation) <i>[Signature]</i>		Date 4.7.00	Time 1010	Received by: (Signature/Affiliation) <i>[Signature]</i>				Date	Time		
Relinquished by: (Signature/Affiliation)		Date	Time	Received by: (Signature/Affiliation)				Date	Time		
Relinquished by: (Signature/Affiliation)		Date	Time	Received by: (Signature/Affiliation) Renee Miller / Kipp				Date 4/10/00	Time 1010		
Report To: Richard Munsch Dett				Bill to: ULTRAMAR INC. 525 West Third Street Hanford, CA 93230 Attention: Joe Albrecht							

WHITE: Return to Client with Report

YELLOW: Laboratory Copy

PINK: Originator Copy



Report Number : 16646

Date : 5/17/00

Richard Munsch
Delta Environmental Consultants, Inc.
3164 Gold Camp Drive, Suite 200
Rancho Cordova, CA 95670

Subject : 3 Air Samples
Project Name : Beacon 721
Project Number :

Dear Mr. Munsch,

Chemical analysis of the samples referenced above has been completed. Summaries of the data are contained on the following pages. Sample(s) were received under documented chain-of-custody. US EPA protocols for sample storage and preservation were followed.

Kiff Analytical is certified by the State of California (# 2236). If you have any questions regarding procedures or results, please call me at 530-297-4800.

Sincerely,

A handwritten signature in black ink that reads "Joel Kiff". The signature is written in a cursive style with a large initial "J".

Joel Kiff



Report Number : 16646

Date : 5/17/00

Project Name : **Beacon 721**

Project Number :

Sample : **A-Soil Carb. Effl.**

Matrix : Air

Sample Date :5/10/00

Parameter	Measured Value	Method Reporting Limit	Units	Analysis Method	Date Analyzed
Benzene	< 0.050	0.050	Molar ppm	EPA 8260B	5/11/00
Toluene	< 0.050	0.050	Molar ppm	EPA 8260B	5/11/00
Ethylbenzene	< 0.050	0.050	Molar ppm	EPA 8260B	5/11/00
Total Xylenes	< 0.050	0.050	Molar ppm	EPA 8260B	5/11/00
TPH as Gasoline	< 5.0	5.0	Molar ppm	EPA 8260B	5/11/00
Toluene - d8 (Surr)	101		% Recovery	EPA 8260B	5/11/00
4-Bromofluorobenzene (Surr)	100		% Recovery	EPA 8260B	5/11/00

Sample : **A-Soil Carb. M.P.**

Matrix : Air

Sample Date :5/10/00

Parameter	Measured Value	Method Reporting Limit	Units	Analysis Method	Date Analyzed
Benzene	< 0.050	0.050	Molar ppm	EPA 8260B	5/11/00
Toluene	< 0.050	0.050	Molar ppm	EPA 8260B	5/11/00
Ethylbenzene	< 0.050	0.050	Molar ppm	EPA 8260B	5/11/00
Total Xylenes	< 0.050	0.050	Molar ppm	EPA 8260B	5/11/00
TPH as Gasoline	< 5.0	5.0	Molar ppm	EPA 8260B	5/11/00
Toluene - d8 (Surr)	100		% Recovery	EPA 8260B	5/11/00
4-Bromofluorobenzene (Surr)	102		% Recovery	EPA 8260B	5/11/00

Approved By:  Joel Kiff



Report Number : 16646

Date : 5/17/00

Project Name : **Beacon 721**

Project Number :

Sample : **A-Soil Carb Inf.**

Matrix : Air

Sample Date :5/10/00

Parameter	Measured Value	Method Reporting Limit	Units	Analysis Method	Date Analyzed
Benzene	< 0.050	0.050	Molar ppm	EPA 8260B	5/12/00
Toluene	< 0.050	0.050	Molar ppm	EPA 8260B	5/12/00
Ethylbenzene	< 0.050	0.050	Molar ppm	EPA 8260B	5/12/00
Total Xylenes	< 0.050	0.050	Molar ppm	EPA 8260B	5/12/00
TPH as Gasoline	< 5.0	5.0	Molar ppm	EPA 8260B	5/12/00
Toluene - d8 (Surr)	100		% Recovery	EPA 8260B	5/12/00
4-Bromofluorobenzene (Surr)	101		% Recovery	EPA 8260B	5/12/00

Approved By:  Joel Kiff



Ultramar Inc.
CHAIN OF CUSTODY REPORT

16646

BEACON

Beacon Station No. 721		Sampler (Print Name) Charles E. Parker			ANALYSES				Date 5-10-00	Form No. Col 1																
Project No. _____		Sampler (Signature) <i>[Signature]</i>			<table border="1"> <tr> <td rowspan="2">BTEX</td> <td rowspan="2">TPH (gasoline)</td> <td rowspan="2">TPH (diesel)</td> <td rowspan="2"></td> <td rowspan="2"></td> <td rowspan="2"></td> <td rowspan="2"></td> <td rowspan="2"></td> <td rowspan="2">No. of Containers</td> <td rowspan="2">REMARKS Normal Turnaround</td> </tr> <tr> <td></td> <td></td> <td></td> <td></td> <td></td> <td></td> <td></td> <td></td> </tr> </table>				BTEX	TPH (gasoline)	TPH (diesel)						No. of Containers	REMARKS Normal Turnaround								
BTEX	TPH (gasoline)	TPH (diesel)																				No. of Containers	REMARKS Normal Turnaround			
Project Location San Lorenzo, CA		Affiliation WSIS																								
Sample No./Identification		Date	Time	Lab No.																						
A-Soil Carb Effl.		5-10-00	0815	-01					1																	
A-Soil Carb M.P.		5-10-00	0818	-02					1																	
A-Soil Carb Inf.		5-10-00	0820	-03					1																	
Relinquished by: (Signature/Affiliation) <i>[Signature]</i> / WSIS		Date 5/10/00	Time 0815	Received by: (Signature/Affiliation) _____				Date	Time																	
Relinquished by: (Signature/Affiliation) _____		Date	Time	Received by: (Signature/Affiliation) _____				Date	Time																	
Relinquished by: (Signature/Affiliation) _____		Date	Time	Received by: (Signature/Affiliation) Andrew Pappas / Kuff				Date 05/10/00	Time 0915																	
Report To: Richard Munsch Delta Environmental				Bill to: ULTRAMAR INC. 525 West Third Street Hanford, CA 93230 Attention: The Aldridge																						

WHITE: Return to Client with Report

YELLOW: Laboratory Copy

PINK: Originator Copy



Report Number : 16887

Date : 6/12/00

Richard Munsch
Delta Environmental Consultants, Inc.
3164 Gold Camp Drive, Suite 200
Rancho Cordova, CA 95670

Subject : 3 Air Samples
Project Name : Beacon 721
Project Number :

Dear Mr. Munsch,

Chemical analysis of the samples referenced above has been completed. Summaries of the data are contained on the following pages. Sample(s) were received under documented chain-of-custody. US EPA protocols for sample storage and preservation were followed.

Kiff Analytical is certified by the State of California (# 2236). If you have any questions regarding procedures or results, please call me at 530-297-4800.

Sincerely,

A handwritten signature in black ink that reads "Joel Kiff". The signature is stylized and cursive.

Joel Kiff



Report Number : 16887

Date : 6/12/00

Project Name : **Beacon 721**

Project Number :

Sample : **A-Soil Carb Inf.**

Matrix : Air

Sample Date :6/8/00

Parameter	Measured Value	Method Reporting Limit	Units	Analysis Method	Date Analyzed
Benzene	< 0.050	0.050	Molar ppm	EPA 8260B	6/9/00
Toluene	< 0.050	0.050	Molar ppm	EPA 8260B	6/9/00
Ethylbenzene	< 0.050	0.050	Molar ppm	EPA 8260B	6/9/00
Total Xylenes	< 0.050	0.050	Molar ppm	EPA 8260B	6/9/00
TPH as Gasoline	< 5.0	5.0	Molar ppm	EPA 8260B	6/9/00
Toluene - d8 (Surr)	99.4		% Recovery	EPA 8260B	6/9/00
4-Bromofluorobenzene (Surr)	97.1		% Recovery	EPA 8260B	6/9/00

Sample : **A-Soil Carb M.P.**

Matrix : Air

Sample Date :6/8/00

Parameter	Measured Value	Method Reporting Limit	Units	Analysis Method	Date Analyzed
Benzene	< 0.050	0.050	Molar ppm	EPA 8260B	6/9/00
Toluene	< 0.050	0.050	Molar ppm	EPA 8260B	6/9/00
Ethylbenzene	< 0.050	0.050	Molar ppm	EPA 8260B	6/9/00
Total Xylenes	< 0.050	0.050	Molar ppm	EPA 8260B	6/9/00
TPH as Gasoline	< 5.0	5.0	Molar ppm	EPA 8260B	6/9/00
Toluene - d8 (Surr)	98.7		% Recovery	EPA 8260B	6/9/00
4-Bromofluorobenzene (Surr)	96.0		% Recovery	EPA 8260B	6/9/00

Approved By:  Joel Kiff



Report Number : 16887

Date : 6/12/00

Project Name : **Beacon 721**

Project Number :

Sample : **A-Soil Carb Effl.**

Matrix : Air

Sample Date :6/8/00

Parameter	Measured Value	Method Reporting Limit	Units	Analysis Method	Date Analyzed
Benzene	< 0.050	0.050	Molar ppm	EPA 8260B	6/8/00
Toluene	< 0.050	0.050	Molar ppm	EPA 8260B	6/8/00
Ethylbenzene	< 0.050	0.050	Molar ppm	EPA 8260B	6/8/00
Total Xylenes	< 0.050	0.050	Molar ppm	EPA 8260B	6/8/00
TPH as Gasoline	< 5.0	5.0	Molar ppm	EPA 8260B	6/8/00
Toluene - d8 (Surr)	98.8		% Recovery	EPA 8260B	6/8/00
4-Bromofluorobenzene (Surr)	96.6		% Recovery	EPA 8260B	6/8/00

Approved By:  Joel Kiff



ULTRAMAR INC.
CHAIN OF CUSTODY REPORT

16887

BEACON

Beacon Station No. 721	Sampler (Print Name) Carlos E. Paler			ANALYSES				Date 6-8-00	Form No. 1 of 1
Project No. /	Sampler (Signature) [Signature]			BTEX	TPH (gasoline)	TPH (diesel)	No. of Containers	REMARKS Normal Turnaround	
Project Location San Lorenzo	Affiliation WSIS								
Sample No./Identification	Date	Time	Lab No.						
A-Soil Carb Inf.	6-8-00	1330	-01	✓			1		
A-Soil Carb M.P.	6-8-00	1332	-02	✓			1		
A-Soil Carb Eff.	6-8-00	1334	-03	✓			1		
Relinquished by: (Signature/Affiliation) [Signature] WSIS			Date 6/8/00	Time 1340	Received by: (Signature/Affiliation) /			Date	Time
Relinquished by: (Signature/Affiliation) /			Date	Time	Received by: (Signature/Affiliation) /			Date	Time
Relinquished by: (Signature/Affiliation) /			Date	Time	Received by: (Signature/Affiliation) Andrews Hayes K.F.			Date 06/09/00	Time 1335
Report To: Richard Munsely Delta Environmental				Bill to: ULTRAMAR INC. 525 West Third Street Hanford, CA 93230 Attention: <u>Doc Aldridge</u>					

WHITE: Return to Client with Report

YELLOW: Laboratory Copy

PINK: Originator Copy