



RECEIVED

JUN 22 2005

ENVIRONMENTAL HEALTH SERVICE-Denis L. Brown

June 20, 2005

Jerry Wickham
Alameda County Health Care Services Agency
1131 Harbor Bay Parkway, Suite 250
Alameda, CA 94502-6577

Shell Oil Products US
HSE – Environmental Services
20945 S. Wilmington Ave.
Carson, CA 90810-1039
Tel (707) 865 0251
Fax (707) 865 2542
Email denis.l.brown@shell.com

Re: Second Quarter 2005 Monitoring Report
Shell-branded Service Station
29 Wildwood Avenue
Piedmont, California
SAP Code 135765
Incident No. 98995822

Dear Mr. Wickham:

Attached for your review and comment is a copy of the *Second Quarter 2005 Monitoring Report* for the above referenced site. Upon information and belief, I declare, under penalty of perjury, that the information contained in the attached document is true and correct.

If you have any questions or concerns, please call me at (707) 865-0251.

Sincerely,

Denis L. Brown
Sr. Environmental Engineer

RECEIVED

JUN 22 2005

C A M B R I A

ENVIRONMENTAL HEALTH SERVICES

June 20, 2005

Jerry Wickham
Alameda County Health Care Services Agency
1131 Harbor Bay Parkway, Suite 250
Alameda, California 94502-6577

Re: **Second Quarter 2005 Monitoring Report**
Shell-branded Service Station
29 Wildwood Avenue
Piedmont, California
Incident #98995822
Cambria Project# 247-0687-002



Dear Mr. Wickham:

On behalf of Equilon Enterprises LLC dba Shell Oil Products US (Shell), Cambria Environmental Technology, Inc. (Cambria) is submitting this groundwater monitoring report in accordance with the reporting requirements of 23 CCR 2652d.

SECOND QUARTER 2005 ACTIVITIES

Groundwater Monitoring: Blaine Tech Services, Inc. (Blaine) of San Jose, California measured dissolved oxygen (DO) concentrations, gauged and sampled all site wells, calculated groundwater elevations, and compiled the analytical data. Cambria prepared a vicinity map that includes previously submitted well survey information (Figure 1) and a groundwater elevation contour map (Figure 2). Blaine's report, presenting the laboratory report and supporting field documents, is included as Attachment A.

Additional Oxygenate Analysis: The Alameda County Health Care Services Agency's May 16, 2003 letter directed Shell to continue analyzing all groundwater monitoring samples for the fuel oxygenates methyl tertiary butyl ether (MTBE), tert amyl methyl ether, ethyl tert butyl ether, di-isopropyl ether, and tert butyl alcohol (TBA) by EPA Method 8260 until further notice. During second quarter 2005, samples from wells MW-1, MW-2, and MW-3 were analyzed for these target analytes. Of the target analytes, only TBA and MTBE were detected and only in two of the sampled wells. TBA was detected in well MW-3 at a concentration of 610 parts per billion (ppb). MTBE was detected in wells MW-2 and MW-3 at concentrations of 16 ppb and 110 ppb, respectively.

**Cambria
Environmental
Technology, Inc.**

5900 Hollis Street
Suite A
Emeryville, CA 94608
Tel (510) 420-0700
Fax (510) 420-9170

The October 2001 and July 2003 samples from wells MW-2 and MW-3 were also analyzed for ethanol. Ethanol was previously detected only in MW-2. The MW-2 ethanol results were 150,000 ppb in October 2001 and 7,000 ppb in July 2003. In second quarter 2005, samples from MW-2 and MW-3 were analyzed for ethanol, and results were below laboratory detection limits.

Fuel System Upgrade: In April 2005, the station's fuel system was upgraded. Cambria's June 7, 2005 *Dispenser and Piping Upgrade Sampling Report* describes and presents the results of sampling conducted during upgrade activities.



August 2003 Well Survey and Site Conceptual Model Report: Cambria submitted the agency-requested well survey and site conceptual model report on August 14, 2003. To date, no response or comments on the report have been received.

ANTICIPATED THIRD QUARTER 2005 ACTIVITIES

Groundwater Monitoring: Blaine will measure DO, gauge and sample all site wells, and tabulate the data.

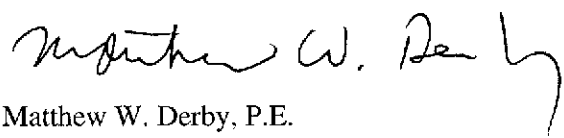
CLOSING

We appreciate the opportunity to work with you on this project. Please call David Gibbs at (510) 420-3363 if you have any questions or comments.

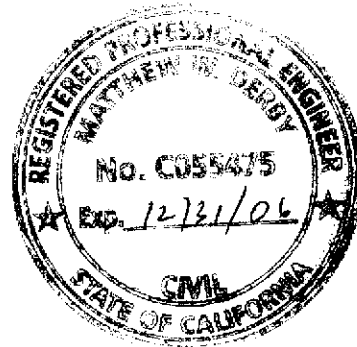
Sincerely,
Cambria Environmental Technology, Inc



David Gibbs
Project Geologist



Matthew W. Derby, P.E.
Senior Project Manager

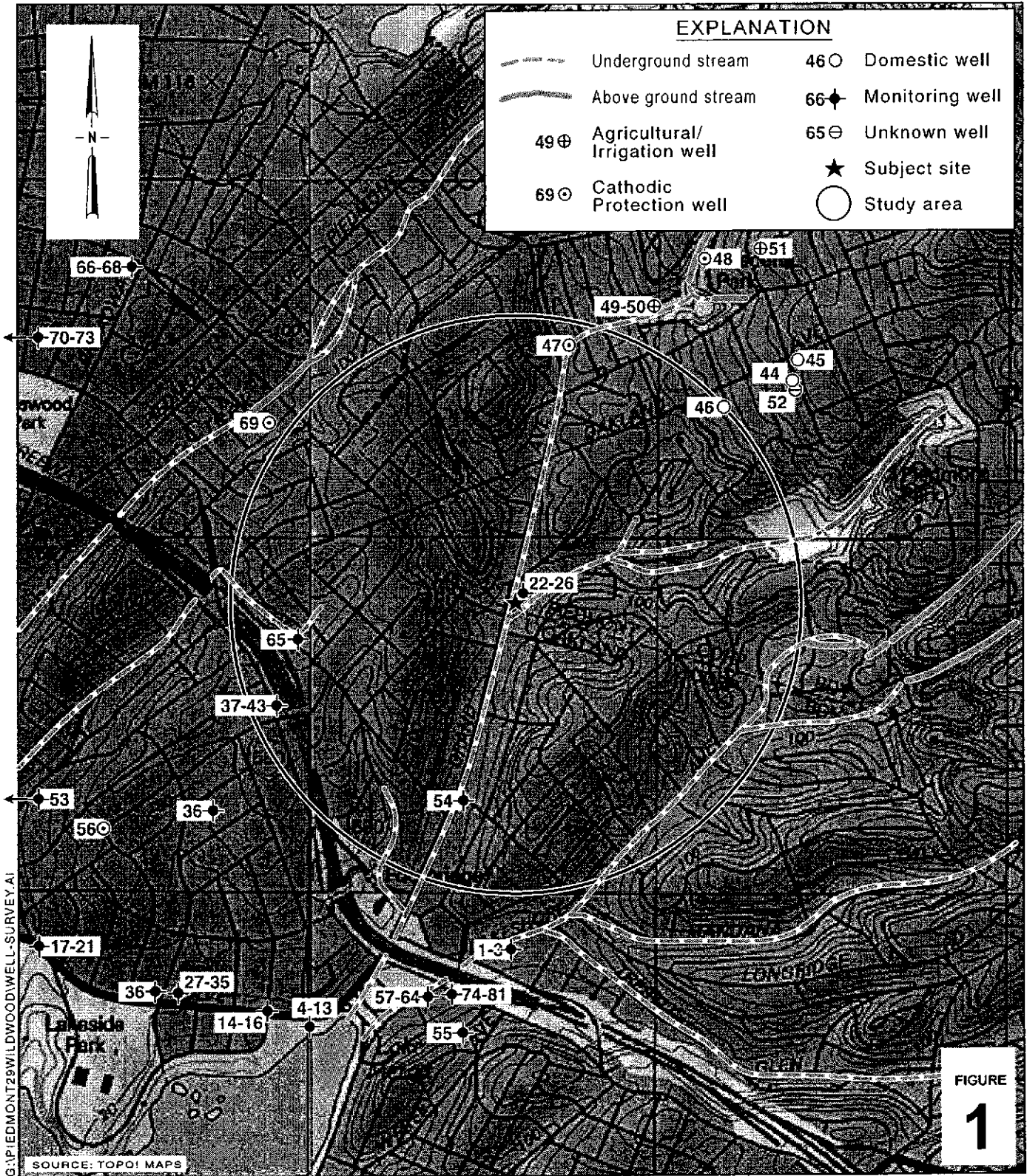


Figures: 1 - Vicinity/Area Well Survey Map
 2 - Groundwater Elevation Contour Map

Attachment: A - Blaine Groundwater Monitoring Report and Field Notes

cc: Denis Brown, Shell Oil Products US, 20945 S. Wilmington Ave., Carson, CA 90810

G:\Piedmont 29 Wildwood\QM\2q05\2q05qm.doc



Shell-branded Service Station

29 Wildwood Avenue
Piedmont, California
Incident #98995822



C A M B R I A

Vicinity/Area Well Survey Map

1/2 Mile Radius

G:\PIEDMONT 29 WILDWOOD\FIGURES\2Q05.A1

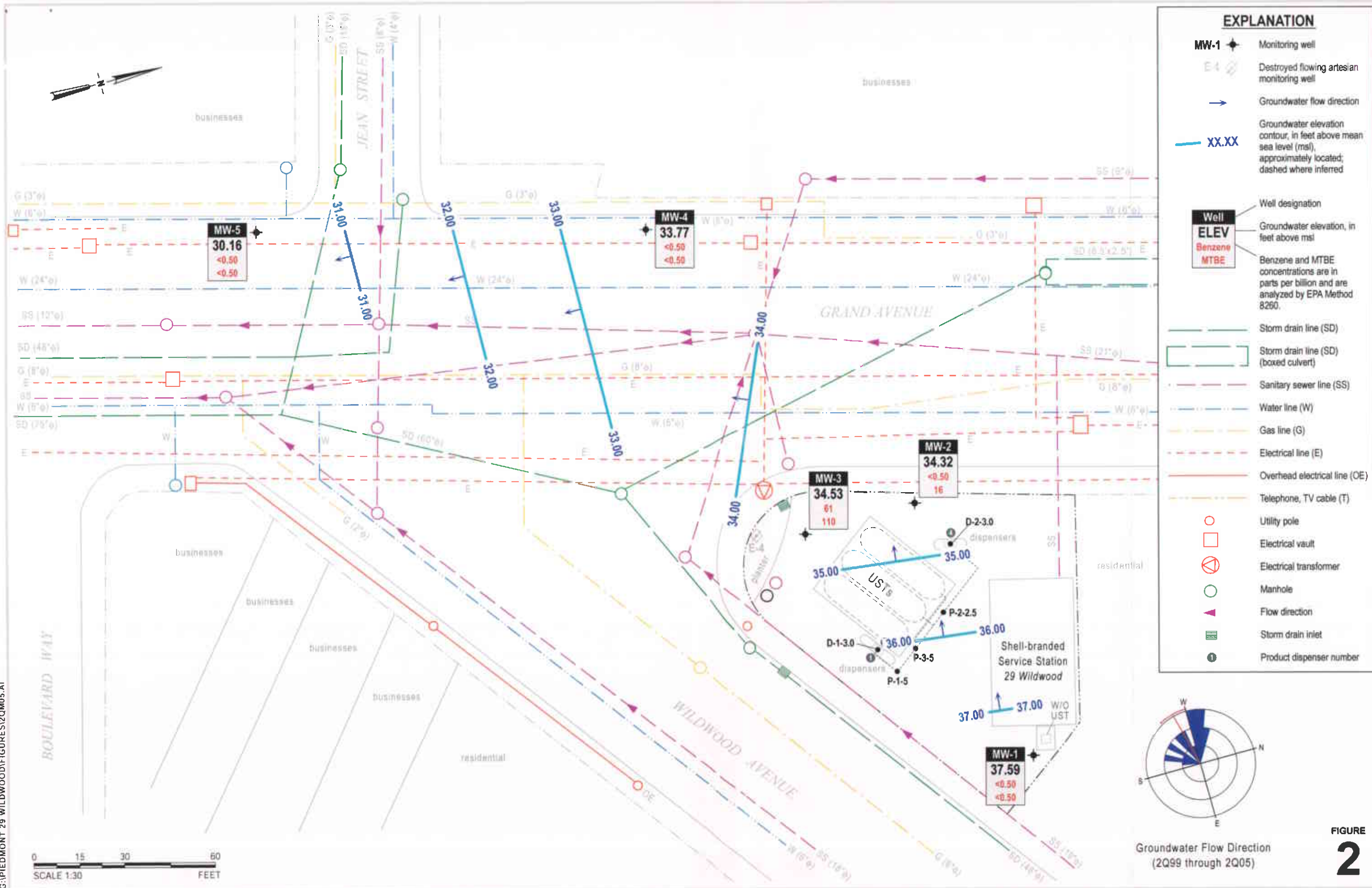


FIGURE 2

Groundwater Elevation Contour Map



C A M B R I A

May 19, 2005

Shell-branded Service Station
 29 Wildwood Avenue
 Piedmont, California
 Incident No. 98995822

ATTACHMENT A
Blaine Groundwater Monitoring Report
and Field Notes

BLAINE
TECH SERVICES INC.

GROUNDWATER SAMPLING SPECIALISTS
SINCE 1985

June 7, 2005

Denis Brown
Shell Oil Products US
20945 South Wilmington Avenue
Carson, CA 90810

Second Quarter 2005 Groundwater Monitoring at
Shell-branded Service Station
29 Wildwood Avenue
Piedmont, CA

Monitoring performed on May 19, 2005

Groundwater Monitoring Report 050519-MD-1

This report covers the routine monitoring of groundwater wells at this Shell-branded facility. In accordance with standard procedures that conform to Regional Water Quality Control Board requirements, routine field data collection includes depth to water, total well depth, thickness of any separate immiscible layer, water column volume, calculated purge volume (if applicable), elapsed evacuation time (if applicable), total volume of water removed (if applicable), and standard water parameter instrument readings. Sample material is collected, contained, stored, and transported to the laboratory in conformance with EPA standards. Purgewater (if applicable) is, likewise, collected and transported to the Martinez Refining Company.

Basic field information is presented alongside analytical values excerpted from the laboratory report in the cumulative table of **WELL CONCENTRATIONS**. The full analytical report for the most recent samples and the field data sheets are attached to this report.

At a minimum, Blaine Tech Services, Inc. field personnel are certified on completion of a forty-hour Hazardous Materials and Emergency Response training course per 29 CFR 1910.120. Field personnel are also enrolled in annual eight-hour refresher courses.

Blaine Tech Services, Inc. conducts sampling and documentation assignments of this type as an independent third party. Our activities at this site consisted of objective data and sample collection only. No interpretation of analytical results, defining of hydrological conditions or formulation of recommendations was performed.

Please call if you have any questions.

Yours truly,

Leon Gearhart
Project Coordinator

LG/cl

attachments: Cumulative Table of WELL CONCENTRATIONS
Certified Analytical Report
Field Data Sheets

cc: Anni Kreml
Cambria Environmental Technology, Inc.
5900 Hollis Street, Suite A
Emeryville, CA 94608

WELL CONCENTRATIONS
Shell-branded Service Station
29 Wildwood Avenue
Piedmont, CA

Well ID	Date	TPPH (ug/L)	B (ug/L)	T (ug/L)	E (ug/L)	X (ug/L)	MTBE 8020 (ug/L)	MTBE 8260 (ug/L)	DIPE (ug/L)	ETBE (ug/L)	TAME (ug/L)	TBA (ug/L)	Ethanol (ug/L)	1,2-DCA (ug/L)	EDB (ug/L)	TOC (MSL)	Depth to Water (ft.)	GW Elevation (MSL)	DO Reading (ppm)
MW-1	7/12/1989	<50	<0.5	<1	<1	<3	NA	NA	NA	NA	NA	NA	NA	NA	NA	37.96	2.76	35.20	NA
MW-1	1/30/1990	<50	<0.5	<0.5	<0.5	<0.5	NA	NA	NA	NA	NA	NA	NA	NA	NA	37.96	3.10	34.86	NA
MW-1	4/27/1990	<50	<0.5	<0.5	<0.5	<0.5	NA	NA	NA	NA	NA	NA	NA	NA	NA	37.96	3.24	34.72	NA
MW-1	7/31/1990	<50	<0.5	<0.5	<0.5	<0.5	NA	NA	NA	NA	NA	NA	NA	NA	NA	37.96	4.26	33.70	NA
MW-1	10/30/1990	<50	<0.5	<0.5	<0.5	<0.5	NA	NA	NA	NA	NA	NA	NA	NA	NA	37.96	4.25	33.71	NA
MW-1	1/31/1991	<50	<0.5	<0.5	<0.5	<0.5	NA	NA	NA	NA	NA	NA	NA	NA	NA	37.96	3.66	34.30	NA
MW-1	4/30/1991	<50	0.8	<0.5	0.6	1.2	NA	NA	NA	NA	NA	NA	NA	NA	NA	37.96	3.46	34.50	NA
MW-1	7/30/1991	<50	<0.5	<0.5	<0.5	<0.5	NA	NA	NA	NA	NA	NA	NA	NA	NA	37.96	4.14	33.82	NA
MW-1	10/29/1991	<50	<0.5	<0.5	<0.5	<0.5	NA	NA	NA	NA	NA	NA	NA	NA	NA	37.96	3.96	34.00	NA
MW-1	1/20/1992	<30	<0.3	<0.3	<0.3	<0.3	NA	NA	NA	NA	NA	NA	NA	NA	NA	37.96	3.59	34.37	NA
MW-1	4/14/1992	<50	<0.5	<0.5	<0.5	<0.5	NA	NA	NA	NA	NA	NA	NA	NA	NA	37.96	3.18	31.71	NA
MW-1	7/21/1992	<50	<0.5	<0.5	<0.5	<0.5	NA	NA	NA	NA	NA	NA	NA	NA	NA	37.96	4.17	33.79	NA
MW-1	10/2/1992	<50	<0.5	<0.5	<0.5	<0.5	NA	NA	NA	NA	NA	NA	NA	NA	NA	37.96	4.29	33.67	NA
MW-1	1/20/1993	<50	<0.5	<0.5	<0.5	<0.5	NA	NA	NA	NA	NA	NA	NA	NA	NA	37.96	2.32	35.64	NA
MW-1	5/3/1993	<50	<0.5	<0.5	<0.5	<0.5	NA	NA	NA	NA	NA	NA	NA	NA	NA	37.96	3.50	34.46	1.9
MW-1	6/28/1993	NA	NA	NA	NA	NA	NA	NA	NA	NA	NA	NA	NA	NA	NA	37.96	3.76	34.20	NA
MW-1	7/21/1993	<50	<0.5	<0.5	<0.5	<0.5	NA	NA	NA	NA	NA	NA	NA	NA	NA	37.96	4.09	33.87	4.6
MW-1	10/19/1993	50	<0.5	<0.5	<0.5	<0.5	NA	NA	NA	NA	NA	NA	NA	NA	NA	37.96	3.58	34.38	4.3
MW-1	1/20/1994	Well inaccessible		NA	NA	NA	NA	NA	NA	NA	NA	NA	NA	NA	NA	37.96	NA	NA	NA
MW-1	4/12/1994	<50	<0.5	<0.5	<0.5	<0.5	NA	NA	NA	NA	NA	NA	NA	NA	NA	37.96	3.60	34.36	7.5
MW-1	7/20/1994	<50	<0.5	<0.5	<0.5	<0.5	NA	NA	NA	NA	NA	NA	NA	NA	NA	37.96	4.10	33.86	3.2
MW-1	10/6/1994	<50	<0.5	<0.5	<0.5	<0.5	NA	NA	NA	NA	NA	NA	NA	NA	NA	37.96	4.30	33.66	3.2
MW-1	1/20/1995	<50	<0.5	<0.5	<0.5	<0.5	NA	NA	NA	NA	NA	NA	NA	NA	NA	37.96	2.94	35.02	10.6
MW-1	7/6/1995	<50	<0.5	<0.5	<0.5	<0.5	NA	NA	NA	NA	NA	NA	NA	NA	NA	37.96	3.68	34.28	NA
MW-1	1/24/1996	<50	<0.5	<0.5	<0.5	<0.5	NA	NA	NA	NA	NA	NA	NA	NA	NA	37.96	2.12	35.84	NA
MW-1	7/12/1996	<50	<0.5	<0.5	<0.5	<0.5	<2.5	NA	NA	NA	NA	NA	NA	NA	NA	37.96	3.58	34.38	2.7
MW-1	1/16/1997	120	.14	10	3.6	14	<2.5	NA	NA	NA	NA	NA	NA	NA	NA	37.96	2.30	35.66	3
MW-1	10/24/1997	<50	<0.50	<0.50	<0.50	<0.50	8.6	NA	NA	NA	NA	NA	NA	NA	NA	37.96	3.66	34.30	4.5
MW-1	5/13/1998	<50	<0.50	<0.50	<0.50	<0.50	<2.5	NA	NA	NA	NA	NA	NA	NA	NA	37.96	2.81	35.15	5.1
MW-1	10/1/1998	<50	<0.50c	<0.50c	<0.50c	<0.50c	<2.5c	NA	NA	NA	NA	NA	NA	NA	NA	37.96	3.75	34.21	5.0

WELL CONCENTRATIONS
Shell-branded Service Station
29 Wildwood Avenue
Piedmont, CA

Well ID	Date	TPPH (ug/L)	B (ug/L)	T (ug/L)	E (ug/L)	X (ug/L)	MTBE 8020 (ug/L)	MTBE 8260 (ug/L)	DIPE (ug/L)	ETBE (ug/L)	TAME (ug/L)	TBA (ug/L)	Ethanol (ug/L)	1,2-DCA (ug/L)	EDB (ug/L)	TOC (MSL)	Depth to Water (ft.)	GW Elevation (MSL)	DO Reading (ppm)
MW-1	4/29/1999	<50	<0.50	<0.50	<0.50	<0.50	<2.5	NA	NA	NA	NA	NA	NA	NA	NA	37.96	3.52	34.44	4.1
MW-1	11/1/1999	<50.0	<0.500	<0.500	<0.500	<0.500	5.03	NA	NA	NA	NA	NA	NA	NA	NA	37.96	4.05	33.91	3.6
MW-1	4/5/2000	<50.0	<0.500	<0.500	<0.500	<0.500	3.22	NA	NA	NA	NA	NA	NA	NA	NA	37.96	3.74	34.22	4.2
MW-1	10/30/2000	<50.0	<0.500	<0.500	<0.500	<0.500	<2.50	NA	NA	NA	NA	NA	NA	NA	NA	37.96	2.19	35.77	4.1
MW-1	4/27/2001	<50.0	<0.500	<0.500	<0.500	<0.500	<2.50	NA	NA	NA	NA	NA	NA	NA	NA	37.96	4.43	33.53	1.9
MW-1	10/31/2001	<50	<0.50	<0.50	<0.50	<0.50	NA	<5.0	NA	NA	NA	NA	NA	NA	NA	37.96	4.34	33.62	2.4
MW-1	5/9/2002	Well inaccessible		NA	NA	NA	NA	NA	NA	NA	NA	NA	NA	NA	NA	37.96	NA	NA	NA
MW-1	7/25/2002	<50	<0.50	<0.50	<0.50	<0.50	NA	<5.0	NA	NA	NA	NA	NA	NA	NA	37.96	3.53	34.43	1.2
MW-1	10/23/2002	<50	<0.50	<0.50	<0.50	<0.50	NA	<0.50	<2.0	<2.0	<2.0	<50	NA	<2.0	<2.0	40.94	3.68	37.26	3.5
MW-1	1/22/2003	Well inaccessible		NA	NA	NA	NA	NA	NA	NA	NA	NA	NA	NA	NA	40.94	NA	NA	NA
MW-1	1/29/2003	<50	<0.50	<0.50	<0.50	<0.50	NA	<5.0	NA	NA	NA	NA	NA	NA	NA	40.94	3.25	37.69	3.7
MW-1	4/30/2003	<50	<0.50	<0.50	<0.50	<1.0	NA	<5.0	NA	NA	NA	NA	NA	NA	NA	40.94	2.76	38.18	3.6
MW-1	7/14/2003	<50	<0.50	<0.50	<0.50	<1.0	NA	<1.4	<2.0	<2.0	<2.0	<5.0	NA	NA	NA	40.94	3.15	37.79	0.5
MW-1	10/23/2003	<50	<0.50	<0.50	<0.50	<1.0	NA	0.64	<2.0	<2.0	<2.0	<5.0	NA	NA	NA	40.94	3.82	37.12	3.9
MW-1	1/5/2004	<50	<0.50	<0.50	<0.50	<1.0	NA	<0.50	<2.0	<2.0	<2.0	<5.0	NA	NA	NA	40.94	3.39	37.55	1.8
MW-1	4/14/2004	<50	<0.50	<0.50	<0.50	<1.0	NA	<0.50	<2.0	<2.0	<2.0	<5.0	NA	NA	NA	40.94	3.43	37.51	4.5
MW-1	7/13/2004	<50	<0.50	<0.50	0.53	1.4	NA	<0.50	<2.0	<2.0	<2.0	<5.0	NA	NA	NA	40.94	3.70	37.24	2.5
MW-1	10/25/2004	<50	<0.50	<0.50	<0.50	<1.0	NA	<0.50	<2.0	<2.0	<2.0	<5.0	NA	NA	NA	40.94	3.60	37.34	5.45
MW-1	1/6/2005	<50	<0.50	<0.50	<0.50	<1.0	NA	<0.50	<2.0	<2.0	<2.0	<5.0	NA	NA	NA	40.94	2.90	38.04	1.5
MW-1	5/19/2005	<50	<0.50	<0.50	<0.50	1.2	NA	<0.50	<2.0	<2.0	<2.0	<5.0	NA	NA	NA	40.94	3.35	37.59	1.2

MW-2	7/12/1989	60	2.7	<1	<1	<3	NA	NA	NA	NA	NA	NA	NA	NA	NA	34.89	3.66	31.23	NA
MW-2	1/30/1990	<50	6.6	<0.5	0.54	0.93	NA	NA	NA	NA	NA	NA	NA	NA	NA	34.89	3.49	31.40	NA
MW-2	4/27/1990	60	2.1	<0.5	<0.5	<0.5	NA	NA	NA	NA	NA	NA	NA	NA	NA	34.89	3.79	31.10	NA
MW-2	7/31/1990	70	1.5	<0.5	<0.5	<0.5	NA	NA	NA	NA	NA	NA	NA	NA	NA	34.89	4.03	30.86	NA
MW-2	10/30/1990	70	<0.5	0.7	<0.5	1.6	NA	NA	NA	NA	NA	NA	NA	NA	NA	34.89	4.21	30.68	NA
MW-2	1/31/1991	80	<0.5	<0.5	0.9	1.9	NA	NA	NA	NA	NA	NA	NA	NA	NA	34.89	4.09	30.80	NA
MW-2	4/30/1991	100	5.9	0.6	0.7	2	NA	NA	NA	NA	NA	NA	NA	NA	NA	34.89	3.95	30.94	NA
MW-2	7/30/1991	<50	<0.5	<0.7	<0.5	<0.5	NA	NA	NA	NA	NA	NA	NA	NA	NA	34.89	4.07	30.82	NA
MW-2	10/29/1991	<50	<0.5	<0.5	<0.5	<0.5	NA	NA	NA	NA	NA	NA	NA	NA	NA	34.89	4.11	30.78	NA
MW-2	1/20/1992	<30	0.84	<0.3	<0.41	<0.48	NA	NA	NA	NA	NA	NA	NA	NA	NA	34.89	3.86	31.03	NA

WELL CONCENTRATIONS
Shell-branded Service Station
29 Wildwood Avenue
Piedmont, CA

Well ID	Date	TPPH (ug/L)	B (ug/L)	T (ug/L)	E (ug/L)	X (ug/L)	MTBE 8020 (ug/L)	MTBE 8260 (ug/L)	DIPE (ug/L)	ETBE (ug/L)	TAME (ug/L)	TBA (ug/L)	Ethanol (ug/L)	1,2-DCA (ug/L)	EDB (ug/L)	TOC (MSL)	Depth to Water (ft.)	GW Elevation (MSL)	DO Reading (ppm)
MW-2	4/14/1992	70	16	<0.5	3.1	2.1	NA	NA	NA	NA	NA	NA	NA	NA	NA	34.89	3.66	34.30	NA
MW-2	7/21/1992	<50	<0.5	<0.5	<0.5	<0.5	NA	NA	NA	NA	NA	NA	NA	NA	NA	34.89	3.92	30.97	NA
MW-2	10/2/1992	<50	<0.5	<0.5	<0.5	<0.5	NA	NA	NA	NA	NA	NA	NA	NA	NA	34.89	4.45	30.44	NA
MW-2	1/20/1993	<50	3.8	<0.5	0.52	<0.5	NA	NA	NA	NA	NA	NA	NA	NA	NA	34.89	3.74	31.15	NA
MW-2	5/3/1993	680a	2.8	<0.5	<0.5	<0.5	NA	NA	NA	NA	NA	NA	NA	NA	NA	34.89	3.77	31.12	0.9
MW-2	6/28/1993	NA	NA	NA	NA	NA	NA	NA	NA	NA	NA	NA	NA	NA	NA	34.89	3.96	30.93	NA
MW-2	7/21/1993	<50	8	1.2	1.8	7.9	NA	NA	NA	NA	NA	NA	NA	NA	NA	34.89	4.39	30.50	5.9
MW-2	10/19/1993	<50	<0.5	<0.5	<0.5	<0.5	NA	NA	NA	NA	NA	NA	NA	NA	NA	34.89	3.92	30.97	5.7
MW-2	1/20/1994	<50	1.5	<0.5	<0.5	<0.5	NA	NA	NA	NA	NA	NA	NA	NA	NA	34.89	4.45	30.44	3.2
MW-2	4/12/1994	<50	2.9	<0.5	<0.5	<0.5	NA	NA	NA	NA	NA	NA	NA	NA	NA	34.89	4.72	30.17	11.4
MW-2	7/20/1994	<50	<0.5	<0.5	<0.5	<0.5	NA	NA	NA	NA	NA	NA	NA	NA	NA	34.89	5.32	29.57	2.4
MW-2	10/6/1994	<50	<0.5	<0.5	<0.5	<0.5	NA	NA	NA	NA	NA	NA	NA	NA	NA	34.89	4.03	30.86	2.9
MW-2	1/20/1995	290	28	<0.5	<0.5	<0.5	NA	NA	NA	NA	NA	NA	NA	NA	NA	34.89	3.89	31.00	4.6
MW-2	7/6/1995	120	3	<0.5	<0.5	<0.5	NA	NA	NA	NA	NA	NA	NA	NA	NA	34.89	8.84	26.05	NA
MW-2	1/24/1996	70	3.1	<0.5	0.8	1.5	NA	NA	NA	NA	NA	NA	NA	NA	NA	34.89	3.80	31.09	NA
MW-2 (D)	1/24/1996	70	3.2	0.5	0.7	1.5	NA	NA	NA	NA	NA	NA	NA	NA	NA	34.89	NA	NA	NA
MW-2	7/12/1996	<50	0.68	<0.5	<0.5	<0.5	270	NA	NA	NA	NA	NA	NA	NA	NA	34.89	3.85	31.04	3.8
MW-2	1/16/1997	230	34	1.6	1.6	4.2	460	NA	NA	NA	NA	NA	NA	NA	NA	34.89	3.84	31.05	NA
MW-2	10/24/1997	<50	<0.50	<0.50	<0.50	<0.50	54	NA	NA	NA	NA	NA	NA	NA	NA	34.89	3.75	31.14	2.9
MW-2	5/13/1998	NA	NA	NA	NA	NA	NA	NA	NA	NA	NA	NA	NA	NA	NA	34.89	3.78	31.11	NA
MW-2	10/1/1998	<50	<0.50c	<0.50c	<0.50c	<0.50c	100	NA	NA	NA	NA	NA	NA	NA	NA	34.89	4.90	29.99	3.0
MW-2	4/29/1999	NA	NA	NA	NA	NA	NA	NA	NA	NA	NA	NA	NA	NA	NA	34.89	4.69	30.20	NA
MW-2	11/1/1999	<50.0	<0.500	1.29	0.669	4.52	7.21	NA	NA	NA	NA	NA	NA	NA	NA	34.89	5.24	29.65	2.9
MW-2	4/5/2000	376d	68.1d	3.10d	2.88d	5.35d	729d	NA	NA	NA	NA	NA	NA	NA	NA	34.89	3.43	31.46	3.6
MW-2	10/30/2000	5,790	59.2	315	162	1320	346	NA	NA	NA	NA	NA	NA	NA	NA	34.89	2.35	32.54	2.8
MW-2	4/27/2001	2,720	90.8	22.8	18.1	165	512	578	NA	NA	NA	NA	NA	NA	NA	34.89	4.67	30.22	0.9
MW-2	10/31/2001	<10,000	<100	<100	<100	<100	NA	<100	<100	<100	<100	<1,000	150,000	NA	NA	34.89	3.68	31.21	1.3
MW-2	5/9/2002	490	1.5	7.8	2.1	14	NA	200	NA	NA	NA	NA	NA	NA	NA	34.89	3.18	31.71	1.1
MW-2	7/25/2002	1,200	1.0	3.3	1.3	8.3	NA	45	NA	NA	NA	NA	NA	NA	NA	34.89	3.30	31.59	0.4
MW-2	10/23/2002	1,100	0.85	3.8	1.3	7.9	NA	140	<2.0	<2.0	<2.0	<50	NA	<2.0	<2.0	37.87	3.87	34.00	0.8
MW-2	1/22/2003	730	<0.50	100	0.96	5.4	NA	230	NA	NA	NA	NA	NA	NA	NA	37.87	2.68	35.19	1.5

WELL CONCENTRATIONS
Shell-branded Service Station
29 Wildwood Avenue
Piedmont, CA

Well ID	Date	TPPH (ug/L)	B (ug/L)	T (ug/L)	E (ug/L)	X (ug/L)	MTBE 8020 (ug/L)	MTBE 8260 (ug/L)	DIPE (ug/L)	ETBE (ug/L)	TAME (ug/L)	TBA (ug/L)	Ethanol (ug/L)	1,2-DCA (ug/L)	EDB (ug/L)	TOC (MSL)	Depth to Water (ft.)	GW Elevation (MSL)	DO Reading (ppm)
MW-2	4/30/2003	<500	<5.0	23	<5.0	<10	NA	410	NA	NA	NA	NA	NA	NA	NA	37.87	3.42	34.45	0.1
MW-2	7/14/2003	<800	1.2	59	1.4	9.8	NA	60	<2.0	<2.0	<2.0	8.6	7,000	NA	NA	37.87	3.50	34.37	1.1
MW-2	10/23/2003	2,000	1.7	0.88	1.5	<1.0	NA	0.98	<2.0	<2.0	<2.0	<5.0	<50	NA	NA	37.87	5.08	32.79	0.8
MW-2	1/5/2004	240	<0.50	8.3	<0.50	1.8	NA	64	<2.0	<2.0	<2.0	<5.0	<50	NA	NA	37.87	2.59	35.28	0.4
MW-2	4/14/2004	81	4.8	10	1.0	5.3	NA	170	<2.0	<2.0	<2.0	9.7	<50	NA	NA	37.87	4.15	33.72	0.2
MW-2	7/13/2004	280	1.1	44	2.4	10	NA	85	<2.0	<2.0	<2.0	5.1	<50	NA	NA	37.87	4.20	33.67	0.1
MW-2	10/25/2004	150	0.75	13	1.3	6.3	NA	41	<2.0	<2.0	<2.0	5.1	<50	NA	NA	38.32 f	4.65	33.67	3.30
MW-2	1/6/2005	180	7.1	4.3	0.79	3.3	NA	120	<2.0	<2.0	<2.0	14	<50	NA	NA	38.32	3.30	35.02	0.5
MW-2	5/19/2005	130	<0.50	4.4	0.90	4.0	NA	16	<2.0	<2.0	<2.0	<5.0	<50	NA	NA	38.32	4.00	34.32	0.5

MW-3	7/12/1989	3,900	380	41	99	30	NA	NA	NA	NA	NA	NA	NA	NA	NA	35.00	3.83	31.17	NA
MW-3	1/30/1990	5,500	440	35	79	130	NA	NA	NA	NA	NA	NA	NA	NA	NA	35.00	3.24	31.76	NA
MW-3	4/27/1990	4,500	310	26	37	110	NA	NA	NA	NA	NA	NA	NA	NA	NA	35.00	4.02	30.98	NA
MW-3	7/31/1990	3,500	210	17	8.4	62	NA	NA	NA	NA	NA	NA	NA	NA	NA	35.00	4.31	30.69	NA
MW-3	10/30/1990	2,300	610	<0.5	<0.5	28	NA	NA	NA	NA	NA	NA	NA	NA	NA	35.00	4.52	30.48	NA
MW-3	1/31/1991	4,100	300	20	19	81	NA	NA	NA	NA	NA	NA	NA	NA	NA	35.00	4.33	30.67	NA
MW-3	4/30/1991	3,800	370	19	8.6	60	NA	NA	NA	NA	NA	NA	NA	NA	NA	35.00	3.79	31.21	NA
MW-3	7/30/1991	3,300	160	13	15	87	NA	NA	NA	NA	NA	NA	NA	NA	NA	35.00	4.37	30.63	NA
MW-3	10/29/1991	1,000	35	2.8	2.9	8.1	NA	NA	NA	NA	NA	NA	NA	NA	NA	35.00	4.00	31.00	NA
MW-3	1/20/1992	6,900	380	18	47	48	NA	NA	NA	NA	NA	NA	NA	NA	NA	35.00	3.87	31.13	NA
MW-3	4/14/1992	6,000	480	38	41	55	NA	NA	NA	NA	NA	NA	NA	NA	NA	35.00	3.15	31.85	NA
MW-3	7/21/1992	3,700	330	13	30	23	NA	NA	NA	NA	NA	NA	NA	NA	NA	35.00	4.17	30.83	NA
MW-3	10/2/1992	4,200	260	10	13	12	NA	NA	NA	NA	NA	NA	NA	NA	NA	35.00	4.43	30.57	NA
MW-3	1/20/1993	4,200	360	15	32	26	NA	NA	NA	NA	NA	NA	NA	NA	NA	35.00	2.20	32.80	NA
MW-3 (D)	1/20/1993	3,900	370	15	32	26	NA	NA	NA	NA	NA	NA	NA	NA	NA	35.00	NA	NA	NA
MW-3	5/3/1993	12,000	290	520	120	620	NA	NA	NA	NA	NA	NA	NA	NA	NA	35.00	3.50	31.50	0.6
MW-3	6/28/1993	NA	NA	NA	NA	NA	NA	NA	NA	NA	NA	NA	NA	NA	NA	35.00	4.08	30.92	NA
MW-3	7/21/1993	2,000	170	12	<10	11	NA	NA	NA	NA	NA	NA	NA	NA	NA	35.00	4.12	30.88	4.3
MW-3 (D)	7/21/1993	2,000	170	10	<10	14	NA	NA	NA	NA	NA	NA	NA	NA	NA	35.00	NA	NA	NA
MW-3	10/19/1993	2,000	240	<0.5	<0.5	<0.5	NA	NA	NA	NA	NA	NA	NA	NA	NA	35.00	4.20	30.80	5.7
MW-3	1/20/1994	4,200	280	<10	<10	<10	NA	NA	NA	NA	NA	NA	NA	NA	NA	35.00	4.08	30.92	4.1

WELL CONCENTRATIONS
Shell-branded Service Station
29 Wildwood Avenue
Piedmont, CA

Well ID	Date	TPPH (ug/L)	B (ug/L)	T (ug/L)	E (ug/L)	X (ug/L)	MTBE 8020 (ug/L)	MTBE 8260 (ug/L)	DIPE (ug/L)	ETBE (ug/L)	TAME (ug/L)	TBA (ug/L)	Ethanol (ug/L)	1,2-DCA (ug/L)	EDB (ug/L)	TOC (MSL)	Depth to Water (ft.)	GW Elevation (MSL)	DO Reading (ppm)
MW-3 (D)	1/20/1994	3,800	250	<10	<10	<10	NA	NA	NA	NA	NA	NA	NA	NA	NA	35.00	NA	NA	4.1
MW-3	4/12/1994	4,700	380	<10	<10	<10	NA	NA	NA	NA	NA	NA	NA	NA	NA	35.00	3.70	31.30	10.6
MW-3 (D)	4/12/1994	3,400	370	<25	<25	<25	NA	NA	NA	NA	NA	NA	NA	NA	NA	35.00	NA	NA	NA
MW-3	7/20/1994	5,100	320	77	15	34	NA	NA	NA	NA	NA	NA	NA	NA	NA	35.00	4.26	30.74	2.3
MW-3 (D)	7/20/1994	4,400	250	14	13	32	NA	NA	NA	NA	NA	NA	NA	NA	NA	35.00	NA	NA	NA
MW-3	10/6/1994	4,300	280	9.7	4	15	NA	NA	NA	NA	NA	NA	NA	NA	NA	35.00	4.31	30.69	2.3
MW-3	1/20/1995	4,600	180	18	16	10	NA	NA	NA	NA	NA	NA	NA	NA	NA	35.00	3.00	32.00	11.1
MW-3 (D)	1/20/1995	4,300	170	12	15	7.2	NA	NA	NA	NA	NA	NA	NA	NA	NA	35.00	NA	NA	NA
MW-3	7/6/1995	3,900	310	<0.5	7.6	13	NA	NA	NA	NA	NA	NA	NA	NA	NA	35.00	3.75	31.25	NA
MW-3 (D)	7/6/1995	4,100	330	<0.5	7.9	2.4	NA	NA	NA	NA	NA	NA	NA	NA	NA	35.00	NA	NA	NA
MW-3	1/24/1996	5,000	210	14	14	12	NA	NA	NA	NA	NA	NA	NA	NA	NA	35.00	3.26	31.74	NA
MW-3	7/12/1996	2,700	210	<0.5	<0.5	<0.5	3,600	NA	NA	NA	NA	NA	NA	NA	NA	35.00	3.77	31.23	2.4
MW-3 (D)	7/12/1996	2,800	210	<0.5	<0.5	<0.5	3,400	NA	NA	NA	NA	NA	NA	NA	NA	35.00	NA	NA	2.4
MW-3	1/16/1997	4,200	130	19	10	34	4,400	4,600	NA	NA	NA	NA	NA	NA	NA	35.00	2.38	32.62	2.3
MW-3	10/24/1997	4,100	270	9	5.1	8.8	2,000	NA	NA	NA	NA	NA	NA	NA	NA	35.00	4.12	30.88	1.9
MW-3 (D)	10/24/1997	1,700	220	<5.0	<5.0	<5.0	1,500	NA	NA	NA	NA	NA	NA	NA	NA	35.00	NA	NA	1.9
MW-3	5/13/1998	NA	NA	NA	NA	NA	NA	NA	NA	NA	NA	NA	NA	NA	NA	35.00	3.22	31.78	NA
MW-3	10/1/1998	1,400	84c	<5.0c	<5.0c	<5.0c	2,300	NA	NA	NA	NA	NA	NA	NA	NA	35.00	4.15	30.85	2.0
MW-3 (D)	10/1/1998	2,100	100c	<10c	<10c	<10c	2,600	NA	NA	NA	NA	NA	NA	NA	NA	35.00	NA	NA	2.0
MW-3	4/29/1999	NA	NA	NA	NA	NA	NA	NA	NA	NA	NA	NA	NA	NA	NA	35.00	4.27	30.73	NA
MW-3	11/1/1999	1,850	94.3	6.09	<5.00	6.67	4,140	NA	NA	NA	NA	NA	NA	NA	NA	35.00	4.65	30.35	2.2
MW-3	4/5/2000	3,070	96.9	12.1	<10.0	<10.0	1,050	NA	NA	NA	NA	NA	NA	NA	NA	35.00	3.50	31.50	2.7
MW-3	10/30/2000	1,570	56.8	1.91	1.39	3.06	572	524	NA	NA	NA	NA	NA	NA	NA	35.00	3.40	31.60	3.1
MW-3	4/27/2001	2,420	103	12.6	<5.00	15.6	314	NA	NA	NA	NA	NA	NA	NA	NA	35.00	3.67	31.33	0.9
MW-3	10/31/2001	<50	0.71	<0.50	<0.50	<0.50	NA	31	<2.0	<2.0	<2.0	<50	<500	NA	NA	35.00	3.79	31.21	1.6
MW-3	5/9/2002	2,000	52	<10	<10	<10	NA	4,100	NA	NA	NA	NA	NA	NA	NA	35.00	3.76	31.24	0.9
MW-3	7/25/2002	1,800	50	<5.0	<5.0	<5.0	NA	1,900	NA	NA	NA	NA	NA	NA	NA	35.00	4.17	30.83	3.7
MW-3	10/23/2002	1,700	27	<5.0	<5.0	<5.0	NA	1,400	<5.0	<5.0	7.4	300	NA	<5.0	<5.0	37.97	4.36	33.61	1.6
MW-3	1/22/2003	1,800	38	2.4	1.5	2.4	NA	390	NA	NA	NA	NA	NA	NA	NA	37.97	3.09	34.88	1.3
MW-3	4/30/2003	3,300	56	5.2	<5.0	<10	NA	540	NA	NA	NA	NA	NA	NA	NA	37.97	3.39	34.58	1.5
MW-3	7/14/2003	1,000	20	2.7	<2.5	<5.0	NA	360	<10	<10	<10	72	<250	NA	NA	37.97	4.05	33.92	1.5

WELL CONCENTRATIONS
Shell-branded Service Station
29 Wildwood Avenue
Piedmont, CA

Well ID	Date	TPPH (ug/L)	B (ug/L)	T (ug/L)	E (ug/L)	X (ug/L)	MTBE 8020 (ug/L)	MTBE 8260 (ug/L)	DIPE (ug/L)	ETBE (ug/L)	TAME (ug/L)	TBA (ug/L)	Ethanol (ug/L)	1,2-DCA (ug/L)	EDB (ug/L)	TOC (MSL)	Depth to Water (ft.)	GW Elevation (MSL)	DO Reading (ppm)
MW-3	10/23/2003	2,100	27	<5.0	<5.0	<10	NA	260	<20	<20	<20	<50	<500	NA	NA	37.97	4.32	33.65	1.0
MW-3	1/5/2004	2,800	91	6.0	<5.0	<10	NA	1,100	<20	<20	<20	450	510	NA	NA	37.97	1.89	36.08	1.8
MW-3	4/14/2004	3,400	47	<5.0	<5.0	<10	NA	360	<20	<20	<20	260	<500	NA	NA	37.97	3.64	34.33	3.6
MW-3	7/13/2004	2,300	21	<5.0	<5.0	<10	NA	210	<20	<20	<20	190	<500	NA	NA	37.97	4.27	33.70	2.7
MW-3	10/25/2004	1,600	21	<5.0	<5.0	<10	NA	190	<20	<20	<20	100	<500	NA	NA	37.97	3.87	34.10	3.65
MW-3	1/6/2005	2,300	46	4.3	2.9	5.8	NA	120	<8.0	<8.0	<8.0	480	<200	NA	NA	37.97	2.30	35.67	2.5
MW-3	5/19/2005	1,600	61	4.1	1.9	3.1	NA	110	<2.0	<2.0	<2.0	610	<50	NA	NA	37.97	3.44	34.53	1.1
MW-4	1/30/1990	<50	<0.5	<0.5	<0.5	<0.5	NA	NA	NA	NA	NA	NA	NA	NA	NA	33.73	4.50	29.23	NA
MW-4	4/27/1990	130a	<0.5	<0.5	<0.5	<0.5	NA	NA	NA	NA	NA	NA	NA	NA	NA	33.73	3.62	30.11	NA
MW-4	7/31/1990	<50	<0.5	<0.5	<0.5	<0.5	NA	NA	NA	NA	NA	NA	NA	NA	NA	33.73	4.19	29.54	NA
MW-4	10/30/1990	<50	<0.5	<0.5	<0.5	<0.5	NA	NA	NA	NA	NA	NA	NA	NA	NA	33.73	4.19	29.54	NA
MW-4	1/31/1991	50a	<0.5	<0.5	<0.5	<0.5	NA	NA	NA	NA	NA	NA	NA	NA	NA	33.73	4.49	29.24	NA
MW-4	4/30/1991	<50	<0.5	<0.5	<0.5	<0.5	NA	NA	NA	NA	NA	NA	NA	NA	NA	33.73	4.02	29.71	NA
MW-4	7/30/1991	<50	<0.5	<0.5	<0.5	<0.5	NA	NA	NA	NA	NA	NA	NA	NA	NA	33.73	4.39	29.34	NA
MW-4	10/29/1991	<50	<0.5	<0.5	<0.5	<0.5	NA	NA	NA	NA	NA	NA	NA	NA	NA	33.73	3.75	29.98	NA
MW-4	1/20/1992	<30	<0.3	<0.3	<0.3	<0.3	NA	NA	NA	NA	NA	NA	NA	NA	NA	33.73	3.94	29.79	NA
MW-4	4/14/1992	<50	<0.5	<0.5	<0.5	<0.5	NA	NA	NA	NA	NA	NA	NA	NA	NA	33.73	3.71	30.02	NA
MW-4	7/21/1992	<50	<0.5	<0.5	<0.5	<0.5	NA	NA	NA	NA	NA	NA	NA	NA	NA	33.73	4.02	29.71	NA
MW-4	10/2/1992	<50	<0.5	<0.5	<0.5	<0.5	NA	NA	NA	NA	NA	NA	NA	NA	NA	33.73	4.13	29.60	NA
MW-4	1/20/1993	<50	<0.5	<0.5	<0.5	<0.5	NA	NA	NA	NA	NA	NA	NA	NA	NA	33.73	3.10	30.63	NA
MW-4	5/3/1993	<50	<0.5	<0.5	<0.5	<0.5	NA	NA	NA	NA	NA	NA	NA	NA	NA	33.73	3.70	30.03	1.7
MW-4	6/28/1993	NA	NA	NA	NA	NA	NA	NA	NA	NA	NA	NA	NA	NA	NA	33.73	3.81	29.92	NA
MW-4	7/21/1993	<50	0.56	<0.5	<0.5	<0.5	NA	NA	NA	NA	NA	NA	NA	NA	NA	33.73	3.81	29.92	4.5
MW-4	10/19/1993	<50	<0.5	<0.5	<0.5	<0.5	NA	NA	NA	NA	NA	NA	NA	NA	NA	33.73	3.94	29.79	5.8
MW-4	1/20/1994	<50	0.71	<0.5	<0.5	<0.5	NA	NA	NA	NA	NA	NA	NA	NA	NA	33.73	4.00	29.73	4.4
MW-4	4/12/1994	<50	<0.5	<0.5	<0.5	<0.5	NA	NA	NA	NA	NA	NA	NA	NA	NA	33.73	4.01	29.72	7.3
MW-4	7/20/1994	160	<0.5	<0.5	<0.5	<0.5	NA	NA	NA	NA	NA	NA	NA	NA	NA	33.73	3.91	29.82	6.4
MW-4	10/6/1994	410	<0.5	<0.5	<0.5	<0.5	NA	NA	NA	NA	NA	NA	NA	NA	NA	33.73	3.99	29.74	5.0
MW-4	1/20/1995	<50	<0.5	<0.5	<0.5	<0.5	NA	NA	NA	NA	NA	NA	NA	NA	NA	33.73	3.56	30.17	4.9
MW-4	7/6/1995	<50	<0.5	<0.5	<0.5	<0.5	NA	NA	NA	NA	NA	NA	NA	NA	NA	33.73	3.85	29.88	NA

WELL CONCENTRATIONS
Shell-branded Service Station
29 Wildwood Avenue
Piedmont, CA

Well ID	Date	TPPH (ug/L)	B (ug/L)	T (ug/L)	E (ug/L)	X (ug/L)	MTBE 8020 (ug/L)	MTBE 8260 (ug/L)	DIPE (ug/L)	ETBE (ug/L)	TAME (ug/L)	TBA (ug/L)	Ethanol (ug/L)	1,2-DCA (ug/L)	EDB (ug/L)	TOC (MSL)	Depth to Water (ft.)	GW Elevation (MSL)	DO Reading (ppm)
MW-4	1/24/1996	<50	<0.5	<0.5	0.6	1.8	NA	NA	NA	NA	NA	NA	NA	NA	NA	33.73	2.56	31.17	NA
MW-4	7/12/1996	<50	<0.5	<0.5	<0.5	<0.5	b	NA	NA	NA	NA	NA	NA	NA	NA	33.73	3.36	30.37	2.7
MW-4	1/16/1997	Well inaccessible		NA	NA	NA	NA	NA	NA	NA	NA	NA	NA	NA	NA	33.73	NA	NA	NA
MW-4	10/24/1997	Well inaccessible		NA	NA	NA	NA	NA	NA	NA	NA	NA	NA	NA	NA	33.73	NA	NA	NA
MW-4	5/13/1998	Well inaccessible		NA	NA	NA	NA	NA	NA	NA	NA	NA	NA	NA	NA	33.73	NA	NA	NA
MW-4	10/1/1998	<50	<0.50c	<0.50c	<0.50c	0.74c	8.1	NA	NA	NA	NA	NA	NA	NA	NA	33.73	3.90	29.83	2.5
MW-4	4/29/1999	<50	<0.50	<0.50	<0.50	<0.50	5.7	NA	NA	NA	NA	NA	NA	NA	NA	33.73	3.97	29.76	2.1
MW-4	11/1/1999	Well inaccessible		NA	NA	NA	NA	NA	NA	NA	NA	NA	NA	NA	NA	33.73	NA	NA	NA
MW-4	4/5/2000	<50.0	<0.500	<0.500	<0.500	<0.500	3.64	NA	NA	NA	NA	NA	NA	NA	NA	33.73	3.63	30.10	2.1
MW-4	10/30/2000	<50.0	<0.500	<0.500	<0.500	<0.500	<2.50	NA	NA	NA	NA	NA	NA	NA	NA	33.73	3.33	30.40	3.0
MW-4	4/27/2001	<50.0	<0.500	<0.500	<0.500	<0.500	<2.50	NA	NA	NA	NA	NA	NA	NA	NA	33.73	3.48	30.25	2.2
MW-4	10/31/2001	<50	<0.50	<0.50	<0.50	<0.50	NA	<5.0	NA	NA	NA	NA	NA	NA	NA	33.73	3.58	30.15	2.8
MW-4	5/9/2002	<50	<0.50	<0.50	<0.50	<0.50	NA	<5.0	NA	NA	NA	NA	NA	NA	NA	33.73	3.74	29.99	2.0
MW-4	7/25/2002	<50	<0.50	<0.50	<0.50	<0.50	NA	<5.0	NA	NA	NA	NA	NA	NA	NA	33.73	3.71	30.02	1.3
MW-4	10/23/2002	<50	<0.50	<0.50	<0.50	<0.50	NA	<0.50	<2.0	<2.0	<2.0	<50	NA	<2.0	<2.0	36.72	3.93	32.79	2.6
MW-4	1/22/2003	<50	<0.50	<0.50	<0.50	<0.50	NA	<5.0	NA	NA	NA	NA	NA	NA	NA	36.72	3.67	33.05	3.1
MW-4	4/30/2003	<50	<0.50	<0.50	<0.50	<1.0	NA	<5.0	NA	NA	NA	NA	NA	NA	NA	36.72	3.46	33.26	2.8
MW-4	7/14/2003	56 a	<0.50	<0.50	<0.50	<1.0	NA	<0.50	<2.0	<2.0	<2.0	<5.0	NA	NA	NA	36.72	3.75	32.97	2.4
MW-4	10/23/2003	<50	<0.50	<0.50	<0.50	<1.0	NA	<0.50	<2.0	<2.0	<2.0	<5.0	NA	NA	NA	36.72	3.93	32.79	2.0
MW-4	1/5/2004	<50	<0.50	<0.50	<0.50	<1.0	NA	<0.50	<2.0	<2.0	<2.0	<5.0	NA	NA	NA	36.72	3.72	33.00	0.8
MW-4	4/14/2004	<50	<0.50	<0.50	<0.50	<1.0	NA	<0.50	<2.0	<2.0	<2.0	<5.0	NA	NA	NA	36.72	3.81	32.91	1.1
MW-4	7/13/2004	<50	<0.50	<0.50	<0.50	<1.0	NA	<0.50	NA	NA	NA	NA	NA	NA	NA	36.72	3.82	32.90	1.6
MW-4	10/25/2004	<50	<0.50	<0.50	<0.50	<1.0	NA	<0.50	NA	NA	NA	NA	NA	NA	NA	36.72	3.63	33.09	2.66
MW-4	1/6/2005	<50	<0.50	<0.50	<0.50	<1.0	NA	<0.50	NA	NA	NA	NA	NA	NA	NA	36.72	3.20	33.52	1.6
MW-4	5/19/2005	<50	<0.50	<0.50	<0.50	<1.0	NA	<0.50	NA	NA	NA	NA	NA	NA	NA	36.72	2.95	33.77	0.9
MW-5	1/30/1990	<50	<0.5	<0.5	<0.5	<0.5	NA	NA	NA	NA	NA	NA	NA	NA	NA	31.38	7.12	24.26	NA
MW-5	4/27/1990	210a	<0.5	<0.5	<0.5	<0.5	NA	NA	NA	NA	NA	NA	NA	NA	NA	31.38	4.19	27.19	NA
MW-5	7/31/1990	90	<0.5	<0.5	<0.5	<0.5	NA	NA	NA	NA	NA	NA	NA	NA	NA	31.38	4.09	27.29	NA
MW-5	10/30/1990	100	0.8	0.7	0.6	1.4	NA	NA	NA	NA	NA	NA	NA	NA	NA	31.38	4.39	26.99	NA
MW-5	1/31/1991	80a	<0.5	<0.5	<0.5	<0.5	NA	NA	NA	NA	NA	NA	NA	NA	NA	31.38	4.49	26.89	NA

WELL CONCENTRATIONS
Shell-branded Service Station
29 Wildwood Avenue
Piedmont, CA

Well ID	Date	TPPH (ug/L)	B (ug/L)	T (ug/L)	E (ug/L)	X (ug/L)	MTBE 8020 (ug/L)	MTBE 8260 (ug/L)	DIPE (ug/L)	ETBE (ug/L)	TAME (ug/L)	TBA (ug/L)	Ethanol (ug/L)	1,2-DCA (ug/L)	EDB (ug/L)	TOC (MSL)	Depth to Water (ft.)	GW Elevation (MSL)	DO Reading (ppm)
MW-5	4/30/1991	90	<0.5	<0.5	<0.5	<0.5	NA	NA	NA	NA	NA	NA	NA	NA	NA	31.38	4.27	27.11	NA
MW-5	7/30/1991	90	<0.5	<0.5	<0.5	<0.5	NA	NA	NA	NA	NA	NA	NA	NA	NA	31.38	4.32	27.06	NA
MW-5	10/29/1991	<50	<0.5	<0.5	<0.5	<0.5	NA	NA	NA	NA	NA	NA	NA	NA	NA	31.38	3.79	27.59	NA
MW-5	1/20/1992	<30	<0.3	<0.3	<0.3	<0.3	NA	NA	NA	NA	NA	NA	NA	NA	NA	31.38	4.09	27.29	NA
MW-5	4/14/1992	<50a	<0.5	<0.5	<0.5	<0.5	NA	NA	NA	NA	NA	NA	NA	NA	NA	31.38	4.12	27.26	NA
MW-5	7/21/1992	74a	<0.5	<0.5	<0.5	<0.5	NA	NA	NA	NA	NA	NA	NA	NA	NA	31.38	4.13	27.25	NA
MW-5	10/2/1992	76a	<0.5	<0.5	<0.5	<0.5	NA	NA	NA	NA	NA	NA	NA	NA	NA	31.38	4.30	27.08	NA
MW-5	1/20/1993	72a	<0.5	<0.5	<0.5	<0.5	NA	NA	NA	NA	NA	NA	NA	NA	NA	31.38	3.12	28.26	NA
MW-5	5/3/1993	70a	<0.5	<0.5	<0.5	<0.5	NA	NA	NA	NA	NA	NA	NA	NA	NA	31.38	4.07	27.31	1.6
MW-5 (D)	5/4/1993	80a	<0.5	<0.5	<0.5	<0.5	NA	NA	NA	NA	NA	NA	NA	NA	NA	31.38	NA	NA	NA
MW-5	6/28/1993	NA	NA	NA	NA	NA	NA	NA	NA	NA	NA	NA	NA	NA	NA	31.38	4.08	27.30	NA
MW-5	7/21/1993	<50	<0.5	<0.5	<0.5	<0.5	NA	NA	NA	NA	NA	NA	NA	NA	NA	31.38	4.05	27.33	3.5
MW-5	10/19/1993	51	<0.5	<0.5	<0.5	<0.5	NA	NA	NA	NA	NA	NA	NA	NA	NA	31.38	4.20	27.18	3.8
MW-5	1/20/1994	90	<0.5	<0.5	<0.5	<0.5	NA	NA	NA	NA	NA	NA	NA	NA	NA	31.38	4.40	26.98	4.2
MW-5	4/12/1994	67	<0.5	<0.5	<0.5	<0.5	NA	NA	NA	NA	NA	NA	NA	NA	NA	31.38	4.18	27.20	NA
MW-5	7/20/1994	<50	<0.5	<0.5	<0.5	<0.5	NA	NA	NA	NA	NA	NA	NA	NA	NA	31.38	4.06	27.32	3.2
MW-5	10/6/1994	80	<0.5	<0.5	<0.5	<0.5	NA	NA	NA	NA	NA	NA	NA	NA	NA	31.38	4.01	27.37	2.1
MW-5 (D)	10/6/1994	60	<0.5	<0.5	<0.5	<0.5	NA	NA	NA	NA	NA	NA	NA	NA	NA	31.38	NA	NA	NA
MW-5	1/20/1995	<50	<0.5	<0.5	<0.5	<0.5	NA	NA	NA	NA	NA	NA	NA	NA	NA	31.38	3.49	27.89	3.2
MW-5	7/6/1995	<50	<0.5	<0.5	<0.5	<0.5	NA	NA	NA	NA	NA	NA	NA	NA	NA	31.38	4.06	27.32	NA
MW-5	1/24/1996	70	<0.5	<0.5	0.8	2.9	NA	NA	NA	NA	NA	NA	NA	NA	NA	31.38	2.90	28.48	NA
MW-5	7/12/1996	62	<0.5	<0.5	<0.5	<0.5	b	NA	NA	NA	NA	NA	NA	NA	NA	31.38	4.02	27.36	1.9
MW-5	1/16/1997	66	0.91	0.89	<0.50	1.7	<2.5	NA	NA	NA	NA	NA	NA	NA	NA	31.38	2.59	28.79	2.2
MW-5 (D)	1/16/1997	<50	0.7	0.78	<0.50	1.3	<2.5	NA	NA	NA	NA	NA	NA	NA	NA	31.38	NA	NA	2.2
MW-5	10/24/1997	59	<0.50	<0.50	<0.50	<0.50	17	NA	NA	NA	NA	NA	NA	NA	NA	31.38	4.15	27.23	4.6
MW-5	5/13/1998	72	<0.50	<0.50	<0.50	<0.50	<2.5	NA	NA	NA	NA	NA	NA	NA	NA	31.38	3.64	27.74	2.1
MW-5 (D)	5/13/1998	70	<0.50	<0.50	<0.50	<0.50	<2.5	NA	NA	NA	NA	NA	NA	NA	NA	31.38	NA	NA	2.1
MW-5	10/1/1998	57	<0.50c	<0.50c	<0.50c	0.62c	20	NA	NA	NA	NA	NA	NA	NA	NA	31.38	4.25	27.13	2.2
MW-5	4/29/1999	<50	<0.50	<0.50	<0.50	<0.50	16	NA	NA	NA	NA	NA	NA	NA	NA	31.38	4.56	26.82	2.0
MW-5	11/1/1999	<50.0	<0.500	<0.500	<0.500	<0.500	3.06	NA	NA	NA	NA	NA	NA	NA	NA	31.38	4.19	27.19	2.2
MW-5	4/5/2000	<50.0	<0.500	<0.500	<0.500	<0.500	22.5	NA	NA	NA	NA	NA	NA	NA	NA	31.38	4.34	27.04	2.2

WELL CONCENTRATIONS
Shell-branded Service Station
29 Wildwood Avenue
Piedmont, CA

Well ID	Date	TPPH (ug/L)	B (ug/L)	T (ug/L)	E (ug/L)	X (ug/L)	MTBE 8020 (ug/L)	MTBE 8260 (ug/L)	DIPE (ug/L)	ETBE (ug/L)	TAME (ug/L)	TBA (ug/L)	Ethanol (ug/L)	1,2-DCA (ug/L)	EDB (ug/L)	TOC (MSL)	Depth to Water (ft.)	GW Elevation (MSL)	DO Reading (ppm)
MW-5	10/30/2000	<50.0	<0.500	<0.500	<0.500	<0.500	19.3	NA	NA	NA	NA	NA	NA	NA	NA	31.38	3.25	28.13	4.0
MW-5	4/27/2001	51.5	<0.500	<0.500	<0.500	<0.500	4.29	NA	NA	NA	NA	NA	NA	NA	NA	31.38	4.07	27.31	1.0
MW-5	10/31/2001	210	<0.50	<0.50	<0.50	<0.50	NA	<5.0	NA	NA	NA	NA	NA	NA	NA	31.38	4.02	27.36	1.5
MW-5	5/9/2002	280	0.71	<0.50	<0.50	<0.50	NA	<5.0	NA	NA	NA	NA	NA	NA	NA	31.38	4.31	27.07	1.7
MW-5	7/25/2002	410	<0.50	<0.50	<0.50	<0.50	NA	<5.0	NA	NA	NA	NA	NA	NA	NA	31.38	4.32	27.06	0.7
MW-5	10/23/2002	290	<0.50	<0.50	<0.50	<0.50	NA	<0.50	<2.0	<2.0	<2.0	<50	NA	<2.0	<2.0	34.36	4.37	29.99	2.3
MW-5	1/22/2003	260	<0.50	<0.50	<0.50	<0.50	NA	<5.0	NA	NA	NA	NA	NA	NA	NA	34.36	4.12	30.24	2.4
MW-5	4/30/2003	90 a	<0.50	<0.50	<0.50	<1.0	NA	<5.0	NA	NA	NA	NA	NA	NA	NA	34.36	3.88	30.48	1.5
MW-5	7/14/2003	72 a	<0.50	<0.50	<0.50	<1.0	NA	<0.50	<2.0	<2.0	<2.0	<5.0	NA	NA	NA	34.36	4.57	29.79	1.0
MW-5	10/23/2003	120 e	<0.50	<0.50	<0.50	<1.0	NA	<0.50	<2.0	<2.0	<2.0	<5.0	NA	NA	NA	34.36	4.45	29.91	1.8
MW-5	1/5/2004	120 a	<0.50	<0.50	<0.50	1.1	NA	<0.50	<2.0	<2.0	<2.0	<5.0	NA	NA	NA	34.36	3.33	31.03	0.6
MW-5	4/14/2004	180 a	<0.50	<0.50	<0.50	<1.0	NA	<0.50	<2.0	<2.0	<2.0	<5.0	NA	NA	NA	34.36	4.52	29.84	0.6
MW-5	7/13/2004	150 a	<0.50	<0.50	<0.50	<1.0	NA	<0.50	NA	NA	NA	NA	NA	NA	NA	34.36	4.42	29.94	0.1
MW-5	10/25/2004	85 g	<0.50	<0.50	<0.50	<1.0	NA	<0.50	NA	NA	NA	NA	NA	NA	NA	34.36	4.04	30.32	2.21
MW-5	1/6/2005	88 g	<0.50	<0.50	<0.50	<1.0	NA	<0.50	NA	NA	NA	NA	NA	NA	NA	34.36	4.00	30.36	0.5
MW-5	5/19/2005	99 g	<0.50	<0.50	<0.50	<1.0	NA	<0.50	NA	NA	NA	NA	NA	NA	NA	34.36	4.20	30.16	1.0

E-4	7/12/1989	<50	<0.5	<1	<1	<3	NA	NA	NA	NA	NA	NA	NA	NA	NA	34.63	NA	>39.13	NA
E-4	1/30/1990	<50	<0.5	<0.5	<0.5	<0.5	NA	NA	NA	NA	NA	NA	NA	NA	NA	34.63	NA	>34.63	NA
E-4	4/27/1990	120a	<0.5	<0.5	<0.5	<0.5	NA	NA	NA	NA	NA	NA	NA	NA	NA	34.63	NA	>34.63	NA
E-4	7/31/1990	<50	<0.5	<0.5	<0.5	<0.5	NA	NA	NA	NA	NA	NA	NA	NA	NA	34.63	NA	>34.63	NA
E-4	10/30/1990	<50	<0.5	<0.5	<0.5	<0.5	NA	NA	NA	NA	NA	NA	NA	NA	NA	34.63	NA	>34.63	NA
E-4	1/31/1991	<50	<0.5	<0.5	<0.5	<0.5	NA	NA	NA	NA	NA	NA	NA	NA	NA	34.63	NA	>34.63	NA
E-4	4/30/1991	<50	<0.5	<0.5	<0.5	<0.5	NA	NA	NA	NA	NA	NA	NA	NA	NA	34.63	NA	>34.63	NA
E-4	7/30/1991	<50	<0.5	0.6	<0.5	<0.5	NA	NA	NA	NA	NA	NA	NA	NA	NA	34.63	NA	>34.63	NA
E-4	10/29/1991	<50	<0.5	<0.5	<0.5	<0.5	NA	NA	NA	NA	NA	NA	NA	NA	NA	34.63	NA	>34.63	NA
E-4	1/20/1992	<30	<0.3	<0.3	<0.3	<0.3	NA	NA	NA	NA	NA	NA	NA	NA	NA	34.63	NA	>34.63	NA
E-4	4/14/1992	<50	<0.5	<0.5	<0.5	<0.5	NA	NA	NA	NA	NA	NA	NA	NA	NA	34.63	NA	>34.63	NA
E-4	7/21/1992	<50	<0.5	<0.5	<0.5	<0.5	NA	NA	NA	NA	NA	NA	NA	NA	NA	34.63	NA	>34.63	NA
E-4	10/2/1992	<50	<0.5	<0.5	<0.5	<0.5	NA	NA	NA	NA	NA	NA	NA	NA	NA	34.63	NA	>34.63	NA
E-4	1/20/1993	<50	<0.5	<0.5	<0.5	<0.5	NA	NA	NA	NA	NA	NA	NA	NA	NA	34.63	NA	>34.63	NA

WELL CONCENTRATIONS
Shell-branded Service Station
29 Wildwood Avenue
Piedmont, CA

Well ID	Date	TPPH (ug/L)	B (ug/L)	T (ug/L)	E (ug/L)	X (ug/L)	MTBE 8020 (ug/L)	MTBE 8260 (ug/L)	DIPE (ug/L)	ETBE (ug/L)	TAME (ug/L)	TBA (ug/L)	Ethanol (ug/L)	1,2-DCA (ug/L)	EDB (ug/L)	TOC (MSL)	Depth to Water (ft.)	GW Elevation (MSL)	DO Reading (ppm)
E-4	5/3/1993	<50	<0.5	<0.5	<0.5	<0.5	NA	NA	NA	NA	NA	NA	NA	NA	NA	34.63	NA	>34.63	0.6
E-4	6/28/1993	NA	NA	NA	NA	NA	NA	NA	NA	NA	NA	NA	NA	NA	NA	34.63	NA	>34.63	NA
E-4	7/21/1993	<50	5.4	0.72	1	4.4	NA	NA	NA	NA	NA	NA	NA	NA	NA	34.63	NA	>34.63	5.4
E-4	10/19/1993	<50	<0.5	<0.5	<0.5	<0.5	NA	NA	NA	NA	NA	NA	NA	NA	NA	34.63	NA	>34.63	5.6
E-4	1/20/1994	<50	<0.5	<0.5	<0.5	<0.5	NA	NA	NA	NA	NA	NA	NA	NA	NA	34.63	NA	>34.63	NA
E-4	4/12/1994	<50	<0.5	<0.5	<0.5	<0.5	NA	NA	NA	NA	NA	NA	NA	NA	NA	34.63	NA	>34.63	9.4
E-4	7/20/1994	<50	<0.5	<0.5	<0.5	<0.5	NA	NA	NA	NA	NA	NA	NA	NA	NA	34.63	NA	>34.63	2.0
E-4	10/6/1994	<50	<0.5	<0.5	<0.5	<0.5	NA	NA	NA	NA	NA	NA	NA	NA	NA	34.63	NA	>34.63	1.3
E-4	1/20/1995	<50	<0.5	<0.5	<0.5	<0.5	NA	NA	NA	NA	NA	NA	NA	NA	NA	34.63	NA	>34.63	3.7
E-4	5/16/1995	Well abandoned		NA	NA	NA	NA	NA	NA	NA	NA	NA	NA	NA	NA	NA	NA	NA	NA

WELL CONCENTRATIONS
Shell-branded Service Station
29 Wildwood Avenue
Piedmont, CA

Well ID	Date	TPPH (ug/L)	B (ug/L)	T (ug/L)	E (ug/L)	X (ug/L)	MTBE 8020 (ug/L)	MTBE 8260 (ug/L)	DIPE (ug/L)	ETBE (ug/L)	TAME (ug/L)	TBA (ug/L)	Ethanol (ug/L)	1,2-DCA (ug/L)	EDB (ug/L)	TOC (MSL)	Depth to Water (ft.)	GW Elevation (MSL)	DO Reading (ppm)
---------	------	----------------	-------------	-------------	-------------	-------------	------------------------	------------------------	----------------	----------------	----------------	---------------	-------------------	-------------------	---------------	--------------	----------------------------	--------------------------	------------------------

Abbreviations:

TPPH = Total petroleum hydrocarbons as gasoline by EPA Method 8260B; prior to October 31, 2001, analyzed by EPA Method 8015.

BTEX = Benzene, toluene, ethylbenzene, xylenes by EPA Method 8260B; prior to October 31, 2001, analyzed by EPA Method 8020.

MTBE = Methyl tertiary butyl ether

DIPE = Di-isopropyl ether, analyzed by EPA Method 8260B

ETBE = Ethyl tertiary butyl ether, analyzed by EPA Method 8260B

TAME = Tertiary amyl methyl ether, analyzed by EPA Method 8260B

TBA = Tertiary butyl alcohol, analyzed by EPA Method 8260B

1,2-DCA = 1,2-Dichloroethane, analyzed by EPA Method 8260B

EDB = 1,2-Dibromoethane, analyzed by EPA Method 8260B

TOC = Top of Casing Elevation

SPH = Separate-Phase Hydrocarbons

GW = Groundwater

DO = Dissolved Oxygen

ug/L = Parts per billion

ppm = Parts per million

MSL = Mean sea level

ft. = Feet

<n = Below detection limit

(D) = Duplicate sample

NA = Not applicable

WELL CONCENTRATIONS
Shell-branded Service Station
29 Wildwood Avenue
Piedmont, CA

Well ID	Date	TPPH (ug/L)	B (ug/L)	T (ug/L)	E (ug/L)	X (ug/L)	MTBE 8020 (ug/L)	MTBE 8260 (ug/L)	DIPE (ug/L)	ETBE (ug/L)	TAME (ug/L)	TBA (ug/L)	Ethanol (ug/L)	1,2-DCA (ug/L)	EDB (ug/L)	TOC (MSL)	Depth to Water (ft.)	GW Elevation (MSL)	DO Reading (ppm)
---------	------	----------------	-------------	-------------	-------------	-------------	------------------------	------------------------	----------------	----------------	----------------	---------------	-------------------	-------------------	---------------	--------------	----------------------------	--------------------------	------------------------

Notes:

- a = Chromatogram pattern indicated an unidentified hydrocarbon/Hydrocarbon reported does not match laboratory's standard.
 - b = Due to coelution with early eluters, no result could be determined for MTBE.
 - c = Laboratory reported 1.3 ug/L benzene, 11 ug/L toluene, 0.98 ug/L ethyl benzene, and 6.5 ug/L total xylenes in the equipment blank.
 - d = Result reported was generated out of hold time.
 - e = Sample contains discrete peaks which are Chlorinated solvents, in addition to gasoline.
 - f = Top of casing altered +0.45 feet due to wellhead maintenance on August 2, 2004.
 - g = The concentration reported reflects individual or discrete unidentified peaks not matching a typical fuel pattern.
- Ethanol analyzed by EPA Method 8260B.
- Well E-4 is a flowing artesian well; potentiometric surface above top of casing elevation.
- Site surveyed March 5, 2002 by Virgil Chavez Land Surveying of Vallejo, CA.

Blaine Tech Services, Inc.

June 03, 2005

1680 Rogers Avenue
San Jose, CA 95112-1105
Attn.: Leon Gearhart
Project#: 050519-MD1
Project: 98995822
Site: 29 Wildwood Avenue, Piedmont

Dear Mr. Gearhart,

Attached is our report for your samples received on 05/20/2005 15:00
This report has been reviewed and approved for release. Reproduction of this report
is permitted only in its entirety.

Please note that any unused portion of the samples will be discarded after
07/04/2005 unless you have requested otherwise.

We appreciate the opportunity to be of service to you. If you have any questions,

You can also contact me via email. My email address is: mbrewer@stl-inc.com

Sincerely,



Melissa Brewer
Project Manager

Gas/BTEX Fuel Oxygenates by 8260B (C6-C12)

Blaine Tech Services, Inc.

Attn.: Leon Gearhart

1680 Rogers Avenue

San Jose, CA 95112-1105

Phone: (408) 573-0555 Fax: (408) 573-7771

Project: 050519-MD1

98995822

Received: 05/20/2005 15:00

Site: 29 Wildwood Avenue, Piedmont

Samples Reported

Sample Name	Date Sampled	Matrix	Lab #
MW-1	05/19/2005 09:40	Water	1
MW-2	05/19/2005 10:20	Water	2
MW-3	05/19/2005 10:30	Water	3
MW-4	05/19/2005 08:40	Water	4
MW-5	05/19/2005 09:10	Water	5

Gas/BTEX Fuel Oxygenates by 8260B (C6-C12)

Blaine Tech Services, Inc.

Attn.: Leon Gearhart

1680 Rogers Avenue

San Jose, CA 95112-1105

Phone: (408) 573-0555 Fax: (408) 573-7771

Project: 050519-MD1

98995822

Received: 05/20/2005 15:00

Site: 29 Wildwood Avenue, Piedmont

Prep(s): 5030B	Test(s): 8260B
Sample ID: MW-1	Lab ID: 2005-05-0627 - 1
Sampled: 05/19/2005 09:40	Extracted: 5/27/2005 02:32
Matrix: Water	QC Batch#: 2005/05/26-2A.62
pH: <2	

Compound	Conc.	RL	Unit	Dilution	Analyzed	Flag
Gasoline [Shell]	ND	50	ug/L	1.00	05/27/2005 02:32	
Benzene	ND	0.50	ug/L	1.00	05/27/2005 02:32	
Toluene	ND	0.50	ug/L	1.00	05/27/2005 02:32	
Ethylbenzene	ND	0.50	ug/L	1.00	05/27/2005 02:32	
Total xylenes	1.2	1.0	ug/L	1.00	05/27/2005 02:32	
tert-Butyl alcohol (TBA)	ND	5.0	ug/L	1.00	05/27/2005 02:32	
Methyl tert-butyl ether (MTBE)	ND	0.50	ug/L	1.00	05/27/2005 02:32	
Di-isopropyl Ether (DIPE)	ND	2.0	ug/L	1.00	05/27/2005 02:32	
Ethyl tert-butyl ether (ETBE)	ND	2.0	ug/L	1.00	05/27/2005 02:32	
tert-Amyl methyl ether (TAME)	ND	2.0	ug/L	1.00	05/27/2005 02:32	
Surrogate(s)						
1,2-Dichloroethane-d4	114.7	73-130	%	1.00	05/27/2005 02:32	
Toluene-d8	101.0	81-114	%	1.00	05/27/2005 02:32	

Severn Trent Laboratories, Inc.

STL San Francisco * 1220 Quarry Lane, Pleasanton, CA 94566

Tel 925 484 1919 Fax 925 484 1096 * www.stl-inc.com * CA DHS ELAP# 2496

05/31/2005 15:59

Gas/BTEX Fuel Oxygenates by 8260B (C6-C12)

Blaine Tech Services, Inc.

Attn.: Leon Gearhart

1680 Rogers Avenue
San Jose, CA 95112-1105
Phone: (408) 573-0555 Fax: (408) 573-7771

Project: 050519-MD1
98995822

Received: 05/20/2005 15:00

Site: 29 Wildwood Avenue, Piedmont

Prep(s): 5030B	Test(s): 8260B
Sample ID: MW-2	Lab ID: 2005-05-0627 - 2
Sampled: 05/19/2005 10:20	Extracted: 5/27/2005 02:58
Matrix: Water	QC Batch#: 2005/05/26-2A.62
pH: <2	

Compound	Conc.	RL	Unit	Dilution	Analyzed	Flag
Gasoline [Shell]	130	50	ug/L	1.00	05/27/2005 02:58	
Benzene	ND	0.50	ug/L	1.00	05/27/2005 02:58	
Toluene	4.4	0.50	ug/L	1.00	05/27/2005 02:58	
Ethylbenzene	0.90	0.50	ug/L	1.00	05/27/2005 02:58	
Total xylenes	4.0	1.0	ug/L	1.00	05/27/2005 02:58	
tert-Butyl alcohol (TBA)	ND	5.0	ug/L	1.00	05/27/2005 02:58	
Methyl tert-butyl ether (MTBE)	16	0.50	ug/L	1.00	05/27/2005 02:58	
Di-isopropyl Ether (DIPE)	ND	2.0	ug/L	1.00	05/27/2005 02:58	
Ethyl tert-butyl ether (ETBE)	ND	2.0	ug/L	1.00	05/27/2005 02:58	
tert-Amyl methyl ether (TAME)	ND	2.0	ug/L	1.00	05/27/2005 02:58	
Ethanol	ND	50	ug/L	1.00	05/27/2005 02:58	
Surrogate(s)						
1,2-Dichloroethane-d4	110.3	73-130	%	1.00	05/27/2005 02:58	
Toluene-d8	101.7	81-114	%	1.00	05/27/2005 02:58	

Gas/BTEX Fuel Oxygenates by 8260B (C6-C12)

Blaine Tech Services, Inc.

Attn.: Leon Gearhart

1680 Rogers Avenue

San Jose, CA 95112-1105

Phone: (408) 573-0555 Fax: (408) 573-7771

Project: 050519-MD1

98995822

Received: 05/20/2005 15:00

Site: 29 Wildwood Avenue, Piedmont

Prep(s): 5030B	Test(s): 8260B
Sample ID: MW-3	Lab ID: 2005-05-0627 - 3
Sampled: 05/19/2005 10:30	Extracted: 5/27/2005 23:53
Matrix: Water	QC Batch#: 2005/05/27-2B.64

Compound	Conc.	RL	Unit	Dilution	Analyzed	Flag
Gasoline [Shell]	1600	50	ug/L	1.00	05/27/2005 23:53	
Benzene	61	0.50	ug/L	1.00	05/27/2005 23:53	
Toluene	4.1	0.50	ug/L	1.00	05/27/2005 23:53	
Ethylbenzene	1.9	0.50	ug/L	1.00	05/27/2005 23:53	
Total xylenes	3.1	1.0	ug/L	1.00	05/27/2005 23:53	
tert-Butyl alcohol (TBA)	610	5.0	ug/L	1.00	05/27/2005 23:53	
Methyl tert-butyl ether (MTBE)	110	0.50	ug/L	1.00	05/27/2005 23:53	
Di-isopropyl Ether (DIPE)	ND	2.0	ug/L	1.00	05/27/2005 23:53	
Ethyl tert-butyl ether (ETBE)	ND	2.0	ug/L	1.00	05/27/2005 23:53	
tert-Amyl methyl ether (TAME)	ND	2.0	ug/L	1.00	05/27/2005 23:53	
Ethanol	ND	50	ug/L	1.00	05/27/2005 23:53	
Surrogate(s)						
1,2-Dichloroethane-d4	93.4	73-130	%	1.00	05/27/2005 23:53	
Toluene-d8	96.6	81-114	%	1.00	05/27/2005 23:53	

Gas/BTEX Fuel Oxygenates by 8260B (C6-C12)

Blaine Tech Services, Inc.

Attn.: Leon Gearhart

1680 Rogers Avenue
San Jose, CA 95112-1105
Phone: (408) 573-0555 Fax: (408) 573-7771

Project: 050519-MD1
98995822

Received: 05/20/2005 15:00

Site: 29 Wildwood Avenue, Piedmont

Prep(s): 5030B	Test(s): 8260B
Sample ID: MW-4	Lab ID: 2005-05-0627 - 4
Sampled: 05/19/2005 08:40	Extracted: 5/27/2005 03:50
Matrix: Water	QC Batch#: 2005/05/26-2A.62
pH: <2	

Compound	Conc.	RL	Unit	Dilution	Analyzed	Flag
Gasoline [Shell]	ND	50	ug/L	1.00	05/27/2005 03:50	
Benzene	ND	0.50	ug/L	1.00	05/27/2005 03:50	
Toluene	ND	0.50	ug/L	1.00	05/27/2005 03:50	
Ethylbenzene	ND	0.50	ug/L	1.00	05/27/2005 03:50	
Total xylenes	ND	1.0	ug/L	1.00	05/27/2005 03:50	
Methyl tert-butyl ether (MTBE)	ND	0.50	ug/L	1.00	05/27/2005 03:50	
Surrogate(s)						
1,2-Dichloroethane-d4	108.9	73-130	%	1.00	05/27/2005 03:50	
Toluene-d8	99.8	81-114	%	1.00	05/27/2005 03:50	

Gas/BTEX Fuel Oxygenates by 8260B (C6-C12)

Blaine Tech Services, Inc.

Attn.: Leon Gearhart

1680 Rogers Avenue

San Jose, CA 95112-1105

Phone: (408) 573-0555 Fax: (408) 573-7771

Project: 050519-MD1

98995822

Received: 05/20/2005 15:00

Site: 29 Wildwood Avenue, Piedmont

Prep(s): 5030B	Test(s): 8260B
Sample ID: MW-5	Lab ID: 2005-05-0627 - 5
Sampled: 05/19/2005 09:10	Extracted: 5/27/2005 04:17
Matrix: Water	QC Batch#: 2005/05/26-2A.62
pH: <2	

Compound	Conc.	RL	Unit	Dilution	Analyzed	Flag
Gasoline [Shell]	99	50	ug/L	1.00	05/27/2005 04:17	Q6
Benzene	ND	0.50	ug/L	1.00	05/27/2005 04:17	
Toluene	ND	0.50	ug/L	1.00	05/27/2005 04:17	
Ethylbenzene	ND	0.50	ug/L	1.00	05/27/2005 04:17	
Total xylenes	ND	1.0	ug/L	1.00	05/27/2005 04:17	
Methyl tert-butyl ether (MTBE)	ND	0.50	ug/L	1.00	05/27/2005 04:17	
Surrogate(s)						
1,2-Dichloroethane-d4	110.1	73-130	%	1.00	05/27/2005 04:17	
Toluene-d8	98.9	81-114	%	1.00	05/27/2005 04:17	

Gas/BTEX Fuel Oxygenates by 8260B (C6-C12)

Blaine Tech Services, Inc.

Attn.: Leon Gearhart

1680 Rogers Avenue
San Jose, CA 95112-1105
Phone: (408) 573-0555 Fax: (408) 573-7771

Project: 050519-MD1
98995822

Received: 05/20/2005 15:00

Site: 29 Wildwood Avenue, Piedmont

Batch QC Report

Prep(s): 5030B

Test(s): 8260B

Method Blank

Water

QC Batch # 2005/05/26-2A.62

MB: 2005/05/26-2A.62-059

Date Extracted: 05/26/2005 18:59

Compound	Conc.	RL	Unit	Analyzed	Flag
Gasoline [Shell]	ND	50	ug/L	05/26/2005 18:59	
tert-Butyl alcohol (TBA)	ND	5.0	ug/L	05/26/2005 18:59	
Methyl tert-butyl ether (MTBE)	ND	0.5	ug/L	05/26/2005 18:59	
Di-isopropyl Ether (DIPE)	ND	2.0	ug/L	05/26/2005 18:59	
Ethyl tert-butyl ether (ETBE)	ND	2.0	ug/L	05/26/2005 18:59	
tert-Amyl methyl ether (TAME)	ND	2.0	ug/L	05/26/2005 18:59	
Benzene	ND	0.5	ug/L	05/26/2005 18:59	
Toluene	ND	0.5	ug/L	05/26/2005 18:59	
Ethylbenzene	ND	0.5	ug/L	05/26/2005 18:59	
Total xylenes	ND	1.0	ug/L	05/26/2005 18:59	
Ethanol	ND	50	ug/L	05/26/2005 18:59	
Surrogates(s)					
1,2-Dichloroethane-d4	115.4	73-130	%	05/26/2005 18:59	
Toluene-d8	106.2	81-114	%	05/26/2005 18:59	

Gas/BTEX Fuel Oxygenates by 8260B (C6-C12)

Blaine Tech Services, Inc.

Attn.: Leon Gearhart

1680 Rogers Avenue

San Jose, CA 95112-1105

Phone: (408) 573-0555 Fax: (408) 573-7771

Project: 050519-MD1

98995822

Received: 05/20/2005 15:00

Site: 29 Wildwood Avenue, Piedmont

Batch QC Report

Prep(s): 5030B

Method Blank

MB: 2005/05/27-2B.64-037

Water

Test(s): 8260B

QC Batch # 2005/05/27-2B.64

Date Extracted: 05/27/2005 18:37

Compound	Conc.	RL	Unit	Analyzed	Flag
Gasoline [Shell]	ND	50	ug/L	05/27/2005 18:37	
tert-Butyl alcohol (TBA)	ND	5.0	ug/L	05/27/2005 18:37	
Methyl tert-butyl ether (MTBE)	ND	0.5	ug/L	05/27/2005 18:37	
Di-isopropyl Ether (DIPE)	ND	2.0	ug/L	05/27/2005 18:37	
Ethyl tert-butyl ether (ETBE)	ND	2.0	ug/L	05/27/2005 18:37	
tert-Amyl methyl ether (TAME)	ND	2.0	ug/L	05/27/2005 18:37	
Benzene	ND	0.5	ug/L	05/27/2005 18:37	
Toluene	ND	0.5	ug/L	05/27/2005 18:37	
Ethylbenzene	ND	0.5	ug/L	05/27/2005 18:37	
Total xylenes	ND	1.0	ug/L	05/27/2005 18:37	
Ethanol	ND	50	ug/L	05/27/2005 18:37	
Surrogates(s)					
1,2-Dichloroethane-d4	96.6	73-130	%	05/27/2005 18:37	
Toluene-d8	97.6	81-114	%	05/27/2005 18:37	

Gas/BTEX Fuel Oxygenates by 8260B (C6-C12)

Blaine Tech Services, Inc.

Attn.: Leon Gearhart

1680 Rogers Avenue

San Jose, CA 95112-1105

Phone: (408) 573-0555 Fax: (408) 573-7771

Project: 050519-MD1

98995822

Received: 05/20/2005 15:00

Site: 29 Wildwood Avenue, Piedmont

Batch QC Report

Prep(s): 5030B

Test(s): 8260B

Laboratory Control Spike

Water

QC Batch # 2005/05/26-2A.62

LCS 2005/05/26-2A.62-033

Extracted: 05/26/2005

Analyzed: 05/26/2005 18:33

LCSD

Compound	Conc. ug/L		Exp.Conc.	Recovery %		RPD	Ctrl.Limits %		Flags	
	LCS	LCSD		LCS	LCSD		%	Rec.	RPD	LCS
Methyl tert-butyl ether (MTBE)	20.0		25	80.0			65-165	20		
Benzene	23.7		25	94.8			69-129	20		
Toluene	25.7		25	102.8			70-130	20		
Surrogates(s)										
1,2-Dichloroethane-d4	475		500	95.0			73-130			
Toluene-d8	498		500	99.6			81-114			

Gas/BTEX Fuel Oxygenates by 8260B (C6-C12)

Blaine Tech Services, Inc.

Attn.: Leon Gearhart

1680 Rogers Avenue

San Jose, CA 95112-1105

Phone: (408) 573-0555 Fax: (408) 573-7771

Project: 050519-MD1

98995822

Received: 05/20/2005 15:00

Site: 29 Wildwood Avenue, Piedmont

Batch QC Report

Prep(s): 5030B

Test(s): 8260B

Laboratory Control Spike

Water

QC Batch # 2005/05/27-2B.64

LCS 2005/05/27-2B.64-013

Extracted: 05/27/2005

Analyzed: 05/27/2005 18:13

LCSD

Compound	Conc. ug/L		Exp.Conc.	Recovery %		RPD %	Ctrl.Limits %		Flags	
	LCS	LCSD		LCS	LCSD		Rec.	RPD	LCS	LCSD
Methyl tert-butyl ether (MTBE)	28.6		25	114.4			65-165	20		
Benzene	26.3		25	105.2			69-129	20		
Toluene	28.5		25	114.0			70-130	20		
Surrogates(s)										
1,2-Dichloroethane-d4	464		500	92.8			73-130			
Toluene-d8	493		500	98.6			81-114			

Gas/BTEX Fuel Oxygenates by 8260B (C6-C12)

Blaine Tech Services, Inc.

Attn.: Leon Gearhart

1680 Rogers Avenue
San Jose, CA 95112-1105
Phone: (408) 573-0555 Fax: (408) 573-7771

Project: 050519-MD1
98995822

Received: 05/20/2005 15:00

Site: 29 Wildwood Avenue, Piedmont

Batch QC Report

Prep(s): 5030B

Test(s): 8260B

Matrix Spike (MS / MSD)

Water

QC Batch # 2005/05/26-2A.62

MS/MSD

Lab ID: 2005-05-0629 - 004

MS: 2005/05/26-2A.62-026

Extracted: 05/26/2005

Analyzed: 05/26/2005 20:26

Dilution: 1.00

MSD: 2005/05/26-2A.62-052

Extracted: 05/26/2005

Analyzed: 05/26/2005 20:52

Dilution: 1.00

Compound	Conc. ug/L			Spk.Level ug/L	Recovery %			Limits %		Flags	
	MS	MSD	Sample		MS	MSD	RPD	Rec.	RPD	MS	MSD
Methyl tert-butyl ether	22.5	24.1	ND	25	90.0	96.4	6.9	65-165	20		
Benzene	25.0	24.7	ND	25	100.0	98.8	1.2	69-129	20		
Toluene	26.0	26.6	ND	25	104.0	106.4	2.3	70-130	20		
Surrogate(s)											
1,2-Dichloroethane-d4	530	545		500	106.0	109.0		73-130			
Toluene-d8	519	530		500	103.8	106.0		81-114			

Gas/BTEX Fuel Oxygenates by 8260B (C6-C12)

Blaine Tech Services, Inc.

Attn.: Leon Gearhart

1680 Rogers Avenue

San Jose, CA 95112-1105

Phone: (408) 573-0555 Fax: (408) 573-7771

Project: 050519-MD1
98995822

Received: 05/20/2005 15:00

Site: 29 Wildwood Avenue, Piedmont

Batch QC Report

Prep(s): 5030B

Test(s): 8260B

Matrix Spike (MS / MSD)

Water

QC Batch # 2005/05/27-2B.64

MS/MSD

Lab ID: 2005-05-0645 - 001

MS: 2005/05/27-2B.64-054

Extracted: 05/27/2005

Analyzed: 05/27/2005 19:54

Dilution: 1.00

MSD: 2005/05/27-2B.64-017

Extracted: 05/27/2005

Analyzed: 05/27/2005 20:17

Dilution: 1.00

Compound	Conc. ug/L			Spk.Level ug/L	Recovery %			Limits %		Flags	
	MS	MSD	Sample		MS	MSD	RPD	Rec.	RPD	MS	MSD
Methyl tert-butyl ether	26.5	26.3	ND	25	106.0	105.2	0.8	65-165	20		
Benzene	26.5	25.4	ND	25	106.0	101.6	4.2	69-129	20		
Toluene	27.9	27.6	ND	25	111.6	110.4	1.1	70-130	20		
Surrogate(s)											
1,2-Dichloroethane-d4	417	422		500	83.3	84.5		73-130			
Toluene-d8	480	478		500	95.9	95.6		81-114			

Severn Trent Laboratories, Inc.

STL San Francisco * 1220 Quarry Lane, Pleasanton, CA 94566

Tel 925 484 1919 Fax 925 484 1096 * www.stl-inc.com * CA DHS ELAP# 2496

05/31/2005 15:59

Gas/BTEX Fuel Oxygenates by 8260B (C6-C12)

Blaine Tech Services, Inc.

Attn.: Leon Gearhart

1680 Rogers Avenue

San Jose, CA 95112-1105

Phone: (408) 573-0555 Fax: (408) 573-7771

Project: 050519-MD1

98995822

Received: 05/20/2005 15:00

Site: 29 Wildwood Avenue, Piedmont

Legend and Notes

Result Flag

Q6

The concentration reported reflect(s) individual or discrete unidentified peaks not matching a typical fuel pattern.

Brewer, Melissa

From: Kremi, Anni [akremi@cambria-env.com]
Sent: Wednesday, May 25, 2005 1:15 PM
To: Brewer, Melissa; 'Leon Gearhart'
Subject: RE: Verification 29 Wildwood Avenue, Piedmont : 2005-05-0627

MW-2 and MW-3 need to be run for ethanol, as well.

Thanks
Anni Kremi
Senior Staff Scientist
Cambria Environmental Technology, Inc.
(510) 420-3335

-----Original Message-----

From: Brewer, Melissa [mailto:MBrewer@stl-inc.com]
Sent: Wednesday, May 25, 2005 10:54 AM
To: Leon Gearhart
Cc: Kremi, Anni
Subject: Verification 29 Wildwood Avenue, Piedmont : 2005-05-0627

From: Melissa Brewer <mbrewer@stl-inc.com>

Project#: 050519-MD1
Project Name: 98995822

This email includes reports for the following tests:

- Cover Letter

File: STLSF2005050627-ChainofCustody-COC0000472944.PDF

- Project Verification Sheet

File: STLSF2005050627-ProjectVerificationSheet-PVS0000474185.PDF

Please let me know if you have any questions.

Melissa Brewer
Project Manager

STL San Francisco
1220 Quarry Lane
Pleasanton, CA 94566-4756
Phone: (925) 484-1919
Fax: (925) 484-1096

5/25/2005

SHELL Chain Of Custody Record

117316

Lab Identification (if necessary):

Address:

City, State, Zip:

Shell Project Manager to be Invoiced:

- SCIENCE & ENGINEERING
- TECHNICAL SERVICES
- CRMT HOUSTON

Denis Brown

2005-05-0627

INCIDENT NUMBER (S&E ONLY)

9 8 9 9 5 8 2 2

SAP or CRMT NUMBER (TS/CRMT)

DATE: 05/19/05

PAGE: 1 of 1

SAMPLING COMPANY: Blaine Tech Services		LOG CODE: BTSS	SITE ADDRESS (Street and City): 29 Wildwood Avenue, Piedmont		GLOBAL ID NO.: T0600101246
ADDRESS: 1680 Rogers Avenue, San Jose, CA 95112		EPA DELIVERABLE TO (Responsible Party or Company): Anni Kream		PHONE NO.: 510-420-3335	CONSULTANT PROJECT NO.: 050519-MPI
PROJECT CONTACT (Person or PCF Report to): Leon Gearhart		E-MAIL: lgearhart@blainetech.com		SHELL OAKLAND EDP/TS/CRMT: ShellOaklandEDP@cambria-env.com	
TELEPHONE: 408-573-0555	FAX: 408-573-7771	LAB USE ONLY			

John Dewing

TURNAROUND TIME (BUSINESS DAYS):
 10 DAYS 5 DAYS 72 HOURS 48 HOURS 24 HOURS LESS THAN 24 HOURS

LA - RWQCS REPORT FORMAT UST AGENCY: _____

GC/MS MTRC CONFIRMATION: HIGHEST _____ HIGHEST per BORING _____ ALL _____

SPECIAL INSTRUCTIONS OR NOTES: CHECK BOX IF EDD IS NOT NEEDED:

REQUESTED ANALYSIS

LAB USE ONLY	Field Sample Identification	SAMPLING		MATRIX	NO. OF CONT.	REQUESTED ANALYSIS											FIELD NOTES: Container/Preservative or PID Readings or Laboratory Notes <i>200</i>	
		DATE	TIME			TPH - Gas, Purgeable	BTEX	MTBE (80218 - 5ppb RL)	MTBE (82608 - 0.5ppb RL)	Oxygenates (5) by (82608)	Ethanol (82608)	Methanol	1,2-DCA (82608)	EDB (82608)	TPH - Diesel, Extractable (6015ml)	TEMPERATURE ON RECEIPT °C		
	MW-1	5/18/05	0840	W	3	X	X		X									
	MW-2	1	020		3	X	X		X									
	MW-3		1030		5	X	X		X									
	MW-4	6	0840		2	X	X		X									
	MW-5	6	0910		3	X	X		X									

Retrieved by (Signature): <i>[Signature]</i>	Received by (Signature): <i>[Signature]</i>	Date: 5/20/05	Temp: 1500
Retrieved by (Signature): <i>[Signature]</i>	Received by (Signature): <i>[Signature]</i>	Date: 5/20/05	Temp: 1703
Retrieved by (Signature):	Received by (Signature):	Date:	Temp:

QMS Control: 5740-BSP-0702

WELL GAUGING DATA

Project # 050519-ND1 Date 5/19/05 Client Shell

Site 29 Wildwood Ave., Piedmont

Well ID	Well Size (in.)	Sheen / Odor	Depth to Immiscible Liquid (ft.)	Thickness of Immiscible Liquid (ft.)	Volume of Immiscibles Removed (ml)	Depth to water (ft.)	Depth to well bottom (ft.)	Survey Point: TOB or TOC
MW-1	4					3.35	13.07	↓
MW-2	4	sheen odor				4.00	11.65	
MW-3	4	odor				3.44	8.99	
MW-4	4					2.95	13.10	
MW-5	4					4.20	15.98	

SHELL WELL MONITORING DATA SHEET

BTS #: <u>050519-MW1</u>	Site: <u>98995827</u>
Sampler: <u>MW</u>	Date: <u>5/19/05</u>
Well I.D.: <u>MW-1</u>	Well Diameter: 2 3 <u>4</u> 6 8
Total Well Depth (TD): <u>13.07</u>	Depth to Water (DTW): <u>3.35</u>
Depth to Free Product:	Thickness of Free Product (feet):
Referenced to: <u>PVC</u> Grade	D.O. Meter (if req'd): <u>YSI</u> HACH
DTW with 80% Recharge [(Height of Water Column x 0.20) + DTW]: <u>5.29</u>	

Purge Method: Bailer Waterra Sampling Method: Bailer
 Disposable Bailer Peristaltic Disposable Bailer
 Positive Air Displacement Extraction Pump Extraction Port
 Electric Submersible Other _____ Dedicated Tubing

$\frac{6.3 \text{ (Gals.)} \times 3}{1 \text{ Case Volume Specified Volumes}} = \frac{18.9 \text{ Gals.}}{\text{Calculated Volume}}$	<table border="1" style="width: 100%; border-collapse: collapse; font-size: small;"> <tr> <th>Well Diameter</th> <th>Multiplier</th> <th>Well Diameter</th> <th>Multiplier</th> </tr> <tr> <td>1"</td> <td>0.04</td> <td>4"</td> <td>0.65</td> </tr> <tr> <td>2"</td> <td>0.16</td> <td>6"</td> <td>1.47</td> </tr> <tr> <td>3"</td> <td>0.37</td> <td>Other</td> <td>radius² * 0.163</td> </tr> </table>	Well Diameter	Multiplier	Well Diameter	Multiplier	1"	0.04	4"	0.65	2"	0.16	6"	1.47	3"	0.37	Other	radius ² * 0.163
Well Diameter	Multiplier	Well Diameter	Multiplier														
1"	0.04	4"	0.65														
2"	0.16	6"	1.47														
3"	0.37	Other	radius ² * 0.163														

Time	Temp (°F)	pH	Cond. (mS or μ S)	Turbidity (NTUs)	Gals. Removed	Observations
<u>0925</u>	<u>63.0</u>	<u>7.0</u>	<u>731</u>	<u>94</u>	<u>6.3</u>	<u>clear</u>
<u>0929</u>	<u>63.0</u>	<u>6.9</u>	<u>729</u>	<u>241</u>	<u>12.6</u>	<u>cloudy</u>
<u>0933</u>	<u>63.0</u>	<u>6.9</u>	<u>724</u>	<u>294</u>	<u>18.9</u>	<u>cloudy</u>

Did well dewater? Yes No Gallons actually evacuated: 18.9

Sampling Date: 5/19/05 Sampling Time: 0940 Depth to Water: 5.29

Sample I.D.: MW-1 Laboratory: STL Other _____

Analyzed for: TPH-G BTEX MTBE TPH-D Other: OKY 12

EB I.D. (if applicable): _____ @ _____ Time Duplicate I.D. (if applicable): _____

Analyzed for: TPH-G BTEX MTBE TPH-D Other: _____

D.O. (if req'd):	Pre-purge:	mg/L	Post-purge:	1.2 mg/L
O.R.P. (if req'd):	Pre-purge:	mV	Post-purge:	mV

SHELL WELL MONITORING DATA SHEET

BTS #: <u>050519-MW1</u>	Site: <u>98995822</u>
Sampler: <u>MW</u>	Date: <u>5/19/05</u>
Well I.D.: <u>MW-2</u>	Well Diameter: 2 3 <u>4</u> 6 8
Total Well Depth (TD): <u>11.65</u>	Depth to Water (DTW): <u>4.00</u>
Depth to Free Product:	Thickness of Free Product (feet):
Referenced to: <u>RVC</u> Grade	D.O. Meter (if req'd): <u>YSI</u> HACH
DTW with 80% Recharge [(Height of Water Column x 0.20) + DTW]: <u>9.53</u>	

Purge Method: Bailer <input checked="" type="checkbox"/> Disposable Bailer Positive Air Displacement Electric Submersible	Waterra Peristaltic Extraction Pump Other _____	Sampling Method: Bailer <input checked="" type="checkbox"/> Disposable Bailer Extraction Port Dedicated Tubing Other: _____
--	--	---

$\frac{5 \text{ (Gals.)} \times 3}{1 \text{ Case Volume}} = 15 \text{ Gals. Calculated Volume}$	<table border="1" style="width: 100%; border-collapse: collapse;"> <thead> <tr> <th>Well Diameter</th> <th>Multiplier</th> <th>Well Diameter</th> <th>Multiplier</th> </tr> </thead> <tbody> <tr> <td>1"</td> <td>0.04</td> <td>4"</td> <td>0.65</td> </tr> <tr> <td>2"</td> <td>0.16</td> <td>6"</td> <td>1.47</td> </tr> <tr> <td>3"</td> <td>0.37</td> <td>Other</td> <td>radius² * 0.163</td> </tr> </tbody> </table>	Well Diameter	Multiplier	Well Diameter	Multiplier	1"	0.04	4"	0.65	2"	0.16	6"	1.47	3"	0.37	Other	radius ² * 0.163
Well Diameter	Multiplier	Well Diameter	Multiplier														
1"	0.04	4"	0.65														
2"	0.16	6"	1.47														
3"	0.37	Other	radius ² * 0.163														

Time	Temp (°F)	pH	Cond. (mS or μ S)	Turbidity (NTUs)	Gals. Removed	Observations
<u>0955</u>	<u>660</u>	<u>8.1</u>	<u>687</u>	<u>7000</u>	<u>5</u>	<u>Black sheen, odor</u>
					<u>6</u>	<u>well dewatered @</u>
<u>1020</u>	<u>662</u>	<u>8.5</u>	<u>727</u>	<u>7000</u>	<u>-</u>	<u>Black sheen, odor</u>

Did well dewater? Yes No Gallons actually evacuated: 6

Sampling Date: 5/19/05 Sampling Time: 1020 Depth to Water: 7.8 @ site

Sample I.D.: MW-2 Laboratory: STL Other: Depart.

Analyzed for: TPH-G RTEX MTBE TPH-D Other: any's

EB I.D. (if applicable): _____ @ _____ Time Duplicate I.D. (if applicable): _____

Analyzed for: TPH-G BTEX MTBE TPH-D Other: _____

D.O. (if req'd):	Pre-purge:	mg/L	Post-purge:	mg/L
			<u>0.5</u>	
O.R.P. (if req'd):	Pre-purge:	mV	Post-purge:	mV

Blaine Tech Services, Inc. 1680 Rogers Ave., San Jose, CA 95112 (800) 545-7558

** removed ORC'S & brought back to base*

SHELL WELL MONITORING DATA SHEET

BTS #: <u>050519-MD1</u>	Site: <u>98995B22</u>
Sampler: <u>MU</u>	Date: <u>5/19/05</u>
Well I.D.: <u>NW-3</u>	Well Diameter: 2 3 <u>4</u> 6 8
Total Well Depth (TD): <u>8.99</u>	Depth to Water (DTW): <u>3.49</u>
Depth to Free Product:	Thickness of Free Product (feet):
Referenced to: <u>PVC</u> Grade	D.O. Meter (if req'd): <u>YSI</u> HACH
DTW with 80% Recharge [(Height of Water Column x 0.20) + DTW]: <u>4.55</u>	

Purge Method: Bailer Waterra Sampling Method: Bailer
 Disposable Bailer Peristaltic Disposable Bailer
 Positive Air Displacement Extraction Pump Extraction Port
 Electric Submersible Other _____ Dedicated Tubing

$\underline{3.6} \text{ (Gals.)} \times \underline{3} = \underline{10.8} \text{ Gals.}$ 1 Case Volume Specified Volumes Calculated Volume	<table border="1" style="width: 100%; border-collapse: collapse; font-size: small;"> <tr> <th>Well Diameter</th> <th>Multiplier</th> <th>Well Diameter</th> <th>Multiplier</th> </tr> <tr> <td>1"</td> <td>0.04</td> <td>4"</td> <td>0.65</td> </tr> <tr> <td>2"</td> <td>0.16</td> <td>6"</td> <td>1.47</td> </tr> <tr> <td>3"</td> <td>0.37</td> <td>Other</td> <td>radius² * 0.163</td> </tr> </table>	Well Diameter	Multiplier	Well Diameter	Multiplier	1"	0.04	4"	0.65	2"	0.16	6"	1.47	3"	0.37	Other	radius ² * 0.163
Well Diameter	Multiplier	Well Diameter	Multiplier														
1"	0.04	4"	0.65														
2"	0.16	6"	1.47														
3"	0.37	Other	radius ² * 0.163														

Time	Temp (°F)	pH	Cond. (mS or μS)	Turbidity (NTUs)	Gals. Removed	Observations
<u>1005</u>	<u>65.7</u>	<u>7.4</u>	<u>1038</u>	<u>101</u>	<u>3.6</u>	<u>Clear</u>
<u>1008</u>	<u>65.0</u>	<u>7.6</u>	<u>1060</u>	<u>7000</u>	<u>7.2</u>	<u>cloudy</u>
<u>1011</u>	<u>65.0</u>	<u>7.5</u>	<u>1029</u>	<u>315</u>	<u>10.8</u>	<u>cloudy</u>
						<u>DTW = 7.39</u>

Did well dewater? Yes No Gallons actually evacuated: 10.8

Sampling Date: 5/19/05 Sampling Time: 1030 Depth to Water: 4.23

Sample I.D.: NW-3 Laboratory: STL Other _____

Analyzed for: TPH-G BTEX MTBE TPH-D Other: DPY5

EB I.D. (if applicable): _____ @ _____ Time Duplicate I.D. (if applicable): _____

Analyzed for: TPH-G BTEX MTBE TPH-D Other: _____

D.O. (if req'd): Pre-purge:	mg/L	Post-purge:	mg/L
O.R.P. (if req'd): Pre-purge:	mV	Post-purge:	mV

SHELL WELL MONITORING DATA SHEET

BTS #: <u>050519-MD1</u>	Site: <u>98995822</u>
Sampler: <u>MM</u>	Date: <u>5/19/05</u>
Well I.D.: <u>MW-4</u>	Well Diameter: 2 3 <u>4</u> 6 8
Total Well Depth (TD): <u>13.10</u>	Depth to Water (DTW): <u>2.95</u>
Depth to Free Product:	Thickness of Free Product (feet):
Referenced to: <u>PVC</u> Grade	D.O. Meter (if req'd): <u>XSL</u> HACH
DTW with 80% Recharge [(Height of Water Column x 0.20) + DTW]: <u>4.98</u>	

Purge Method: Bailer Waterra Sampling Method: Bailer
 Disposable Bailer Peristaltic Disposable Bailer
 Positive Air Displacement Extraction Pump Extraction Port
 Electric Submersible Other _____ Dedicated Tubing

Other: _____

<u>6.6</u> (Gals.) X	<u>3</u> =	_____ Gals.
I Case Volume	Specified Volumes	Calculated Volume

Well Diameter	Multiplier	Well Diameter	Multiplier
1"	0.04	4"	0.65
2"	0.16	6"	1.47
3"	0.37	Other	radius ² * 0.163

Time	Temp (°F)	pH	Cond. (mS or µS)	Turbidity (NTUs)	Gals. Removed	Observations
0828	64.3	6.5	379	71000	6.6	cloudy
						well dewatered @ (DTW 12.11) 10gal
0840	64.9	7.0	375	71000	=	cloudy

Did well dewater? Yes No Gallons actually evacuated: 10

Sampling Date: 5/19/05 Sampling Time: 0840 Depth to Water: 7.85 to top of well

Sample I.D.: MW-4 Laboratory: STL Other: _____

Analyzed for: TPH-G BTEX MTBE TPH-D Other: SEE SCOPE

EB I.D. (if applicable): _____ @ _____ Time Duplicate I.D. (if applicable): _____

Analyzed for: TPH-G BTEX MTBE TPH-D Other: _____

D.O. (if req'd):	Pre-purge:	mg/L	Post-purge:	mg/L
O.R.P. (if req'd):	Pre-purge:	mV	Post-purge:	mV

SHELL WELL MONITORING DATA SHEET

BTS #: <u>050519-MW1</u>	Site: <u>98995822</u>
Sampler: <u>MW</u>	Date: <u>5/19/85</u>
Well I.D.: <u>MW-5</u>	Well Diameter: 2 3 <u>4</u> 6 8 _____
Total Well Depth (TD): <u>15.98</u>	Depth to Water (DTW): <u>9.20</u>
Depth to Free Product:	Thickness of Free Product (feet):
Referenced to: <u>PVC</u> Grade	D.O. Meter (if req'd): <u>YSI</u> <u>MACH</u>
DTW with 80% Recharge [(Height of Water Column x 0.20) + DTW]: <u>4.56</u> <u>6.56</u>	

Purge Method: <input type="checkbox"/> Bailer <input checked="" type="checkbox"/> Disposable Bailer <input type="checkbox"/> Positive Air Displacement <input type="checkbox"/> Electric Submersible	Waterra: <input type="checkbox"/> Peristaltic <input type="checkbox"/> Extraction Pump Other: _____	Sampling Method: <input type="checkbox"/> Bailer <input checked="" type="checkbox"/> Disposable Bailer <input type="checkbox"/> Extraction Port <input type="checkbox"/> Dedicated Tubing Other: _____
---	---	--

$\frac{7.7 \text{ (Gals.)} \times 3 \text{ Specified Volumes}}{1 \text{ Case Volume}} = 23.1 \text{ Gals. Calculated Volume}$	<table border="1" style="width: 100%; border-collapse: collapse;"> <tr> <th>Well Diameter</th> <th>Multiplier</th> <th>Well Diameter</th> <th>Multiplier</th> </tr> <tr> <td>1"</td> <td>0.04</td> <td>4"</td> <td>0.65</td> </tr> <tr> <td>2"</td> <td>0.16</td> <td>6"</td> <td>1.47</td> </tr> <tr> <td>3"</td> <td>0.37</td> <td>Other</td> <td>radius² * 0.163</td> </tr> </table>	Well Diameter	Multiplier	Well Diameter	Multiplier	1"	0.04	4"	0.65	2"	0.16	6"	1.47	3"	0.37	Other	radius ² * 0.163
Well Diameter	Multiplier	Well Diameter	Multiplier														
1"	0.04	4"	0.65														
2"	0.16	6"	1.47														
3"	0.37	Other	radius ² * 0.163														

Time	Temp (°F)	pH	Cond. (mS or μ S)	Turbidity (NTUs)	Gals. Removed	Observations
<u>0855</u>	<u>64.9</u>	<u>7.0</u>	<u>618</u>	<u>259</u>	<u>7.7</u>	<u>cloudy</u>
<u>0859</u>	<u>64.7</u>	<u>6.9</u>	<u>631</u>	<u>263</u>	<u>15.4</u>	<u>"</u>
<u>0903</u>	<u>64.7</u>	<u>6.9</u>	<u>629</u>	<u>208</u>	<u>23.1</u>	<u>cloudy</u>

Did well dewater? Yes No Gallons actually evacuated: 23.1

Sampling Date: 5/19/85 Sampling Time: 0910 Depth to Water: 4.93

Sample I.D.: MW-5 Laboratory: STL Other: _____

Analyzed for: TPH-G BTEX MTBE TPH-D Other: _____

EB I.D. (if applicable): _____ @ _____ Time Duplicate I.D. (if applicable): _____

Analyzed for: TPH-G BTEX MTBE TPH-D Other: _____

D.O. (if req'd):	Pre-purge:	mg/L	Post-purge:	mg/L
			<u>1.0</u>	
O.R.P. (if req'd):	Pre-purge:	mV	Post-purge:	mV