



RECEIVED

1:50 pm, Aug 04, 2008

**Alameda County
Environmental Health**

*Southern California
Northern California
Pacific Northwest
Southwest
Texas
Montana*

July 31, 2008
ERI 201003MP.L33

Mr. Mo Mashoon
Mash Petroleum
1721 Jefferson Street
Oakland, California 94612

SUBJECT Notification of Scheduled Environmental Activities
Former Exxon Service Station 73006
720 High Street, Oakland, California


Mr. Mashoon:

At the request of ExxonMobil Environmental Services Company, on behalf of ExxonMobil Oil Corporation (ExxonMobil), Environmental Resolutions, Inc. (ERI) is notifying you of upcoming environmental activities at the subject site. As part of the ongoing environmental investigation at the subject site, ERI is advancing three off-site hand-auger soil borings (HA1 through HA3). The proposed boring locations are shown on the attached Generalized Site Plan. Work is being performed at the direction of the Alameda County Health Care Services Agency Department of Environmental Health. This work is anticipated to occur August 18 and August 19, 2008. A project orientation meeting and utility mark-out activities are scheduled for August 13, 2008, at 9:00 am.

Soil cuttings and rinsate water from drilling activities will be placed in 55-gallon drums and stored at the site pending characterization and disposal. Upon receipt of laboratory analytical results of soil samples from the drums, ERI will coordinate with ExxonMobil for disposal of the soil and water. ERI appreciates your cooperation to ensure that field work occurs safely and efficiently, and will minimize disruptions to station operations during the field work. Please note, however, that the location of hand-auger boring HA1 will necessitate closure of the southwest driveway for approximately 8 hours as shown on the approved Traffic Control Plan.

Please call Ms. Paula Sime, ERI's project manager for this site, at (707) 766-2000 with any questions regarding the work.

Sincerely,
Environmental Resolutions, Inc.


Rebekah A. Westrup
Senior Staff Geologist

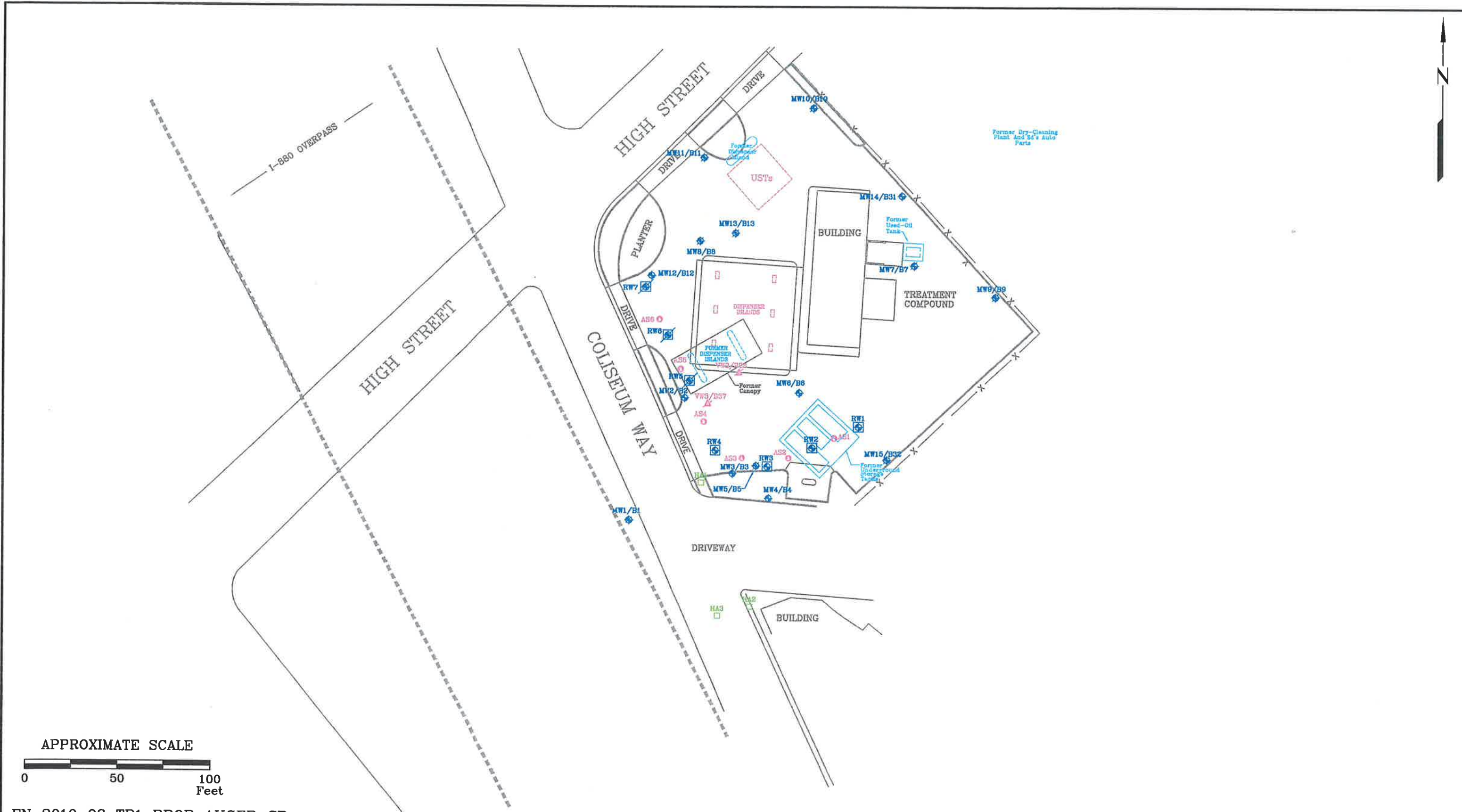

Paula Sime
Project Manager

Environmental Resolutions, Inc.

601 North McDowell Blvd., Petaluma, CA 94954-2312 | Tel: 707.766.2000 | Fax: 707.789.0414 | Contractor # A/C10-611383

Attachments: Generalized Site Plan
Traffic Control Plan

cc: Ms. Jennifer C. Sedlachek, ExxonMobil Environmental Services Company
Ms. Barbara Jakub P.G., Alameda County Health Care Services Agency, Department of
Environmental Health
Mr. Mansour Sepehr, Ph.D., P.E., SOMA Environmental Engineering, Incorporated



APPROXIMATE SCALE



FN 2010 08 TR1 PROP AUGER_SP

PROPOSED HAND-AUGER LOCATION MAP
 FORMER
 EXXON SERVICE STATION 73006
 720 High Street
 Oakland, California

EXPLANATION

- MW14 Groundwater Monitoring Well
- MW15 Destroyed Groundwater Monitoring Well
- AS0 Air Sparge Well
- RW4 Recovery Well
- RW7 Destroyed Recovery Well
- VW3/B37 Soil Vapor Extraction Well
- HA3 Proposed Hand Auger



PROJECT NO.
 2010
 PLATE
 1

TRAFFIC CONTROL PLAN - COLISEUM WAY @ HIGH STREET (LOCATIONS 1, 2, & 4)

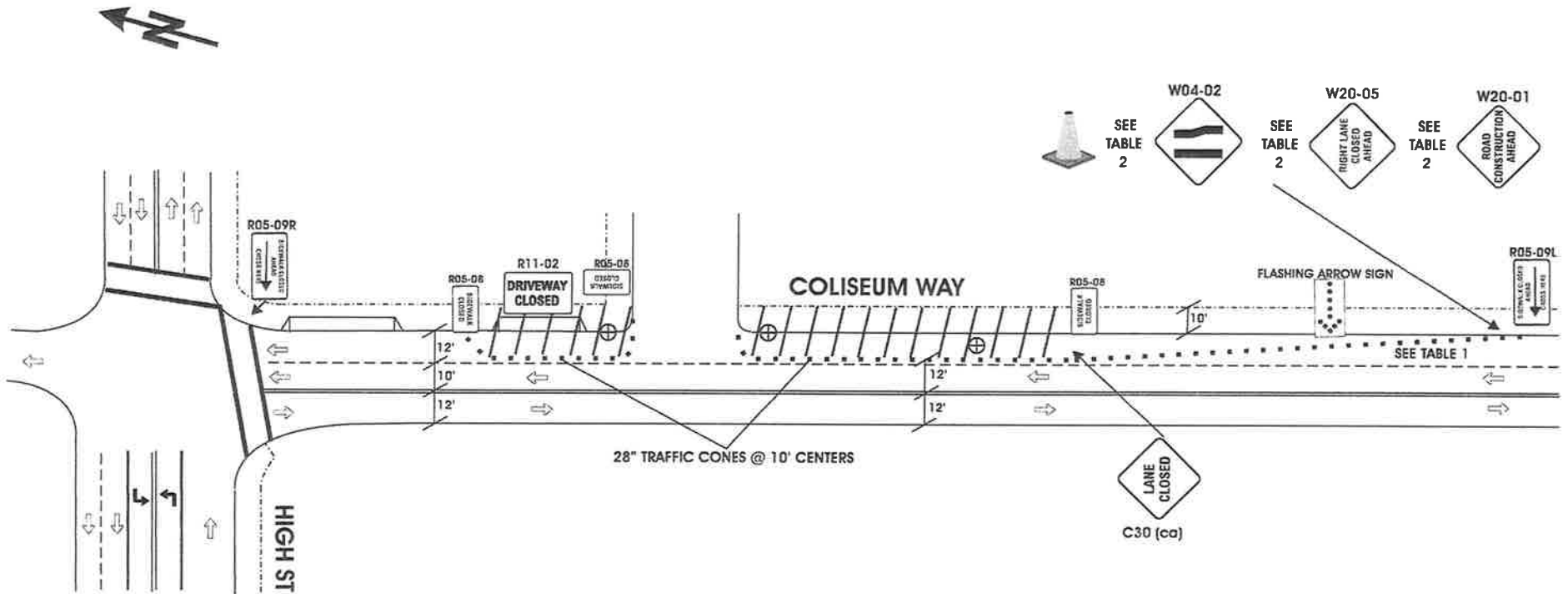


TABLE 1 - Typical Application Taper - Cones

Approach Speed (MPH)	taper length (feet)	# of cones for taper (feet)	spacing cones along taper (ft)
0 - 25	125	6	25
26 - 40	320	9	40
41 - 50	600	13	50

0 - 25	125	6	25
26 - 40	320	9	40
41 - 50	600	13	50

TABLE 2 - Typical Application Signs

Approach Speed (MPH)	between signs (feet) A first sign	between signs (feet) B second sign	between signs (feet) C third sign
Urban low / moderate speeds	100	100	100
Urban high speeds	350	350	350
Rural	500	500	500
Freeway	1000	1500	2640

Urban low / moderate speeds	100	100	100
Urban high speeds	350	350	350
Rural	500	500	500
Freeway	1000	1500	2640

PREPARED BY: ROBERT SCULLY
 HIGHWAY TECHNOLOGIES, INC.
 1277 OLD BAYSHORE HWY.
 SAN JOSE CA. 95112
 (408) 295-8210
 (408) 998-5939 FAX
 C-31 C-32 CONTRACTORS LIC. 796782