



ENVIRONMENTAL HEALTH SERVICES
ENVIRONMENTAL PROTECTION
1131 Harbor Bay Parkway, Suite 250
Alameda, CA 94502-6577
(510) 567-6700
FAX (510) 337-9335

May 22, 2013
NOTIFICATION OF POTENTIAL CASE
CLOSURE
Chevron #9-6991

Site Location: 2920 Castro Valley
Boulevard, Castro Valley, CA 94546
Fuel Leak Case RO0000475
and GeoTracker Global ID T0600101245

Summary – This fact sheet has been prepared to inform community members and other interested parties of potential case closure for a fuel leak case at the Chevron service station located at the corner of Castro Valley Boulevard and Anita Avenue in Castro Valley, California. Based on data and reports submitted by the property owner it does not appear that the petroleum release presents a risk to human health or the environment.

Background – The property has been a gasoline service station since approximately 1946. The first generation service station existed from 1946 to 1990, when it was remodeled to its current configuration.

A soil and groundwater investigation was conducted at the time of removal of one gasoline underground storage tank (UST) 10,000-gallon unleaded gasoline tank and one waste oil tank. Soil and groundwater samples collected during the investigation contained Total Petroleum Hydrocarbons as gasoline (TPHg), Total Petroleum Hydrocarbons as diesel (TPHd), and Total Oil and Grease (TOG), benzene, and ethylbenzene. Contamination appeared to be

concentrated southwest of the USTs. Additional contaminated soil was excavated from the site.

Subsequent activities at the site have included the installation of groundwater monitoring wells and soil bores and the collection of additional samples. Recent groundwater data indicate that the plume containing dissolved petroleum hydrocarbons appears to be stable and delineated. The plume and residual petroleum hydrocarbons in soil are expected to biodegrade over time.

This fuel leak case has been evaluated for closure consistent with the criteria in the State Water Resource Control Board's Low Threat Closure Policy (LTCP). Sites that meet the general and media-specific criteria in the LTCP are considered to not pose a threat to human health, safety, or the environment and are appropriate for closure pursuant to Health and Safety Code section 25296.10. The plume and residual petroleum hydrocarbons in soil are expected to biodegrade over time.

Next Step – The public is invited to review and comment on the potential closure of the fuel leak case. The entire case file can be viewed over the Internet on the ACEH website (<http://www.acgov.org/aceh/lop/ust.htm>) or the State of California Water Resources Control Board GeoTracker website (<http://geotracker.swrcb.ca.gov>). Please send written comments to Mark Detterman at the address below; all comments will be forwarded to the responsible parties. **Comments received by July 22, 2013** will be considered and responded to prior to a final determination on the proposed case closure.

Additional information: Contact Mark Detterman of the Alameda County Department of Environmental Health, 1131 Harbor Bay Parkway, Alameda, CA 94502 at 510-567-6876 or by email at mark.detterman@acgov.org

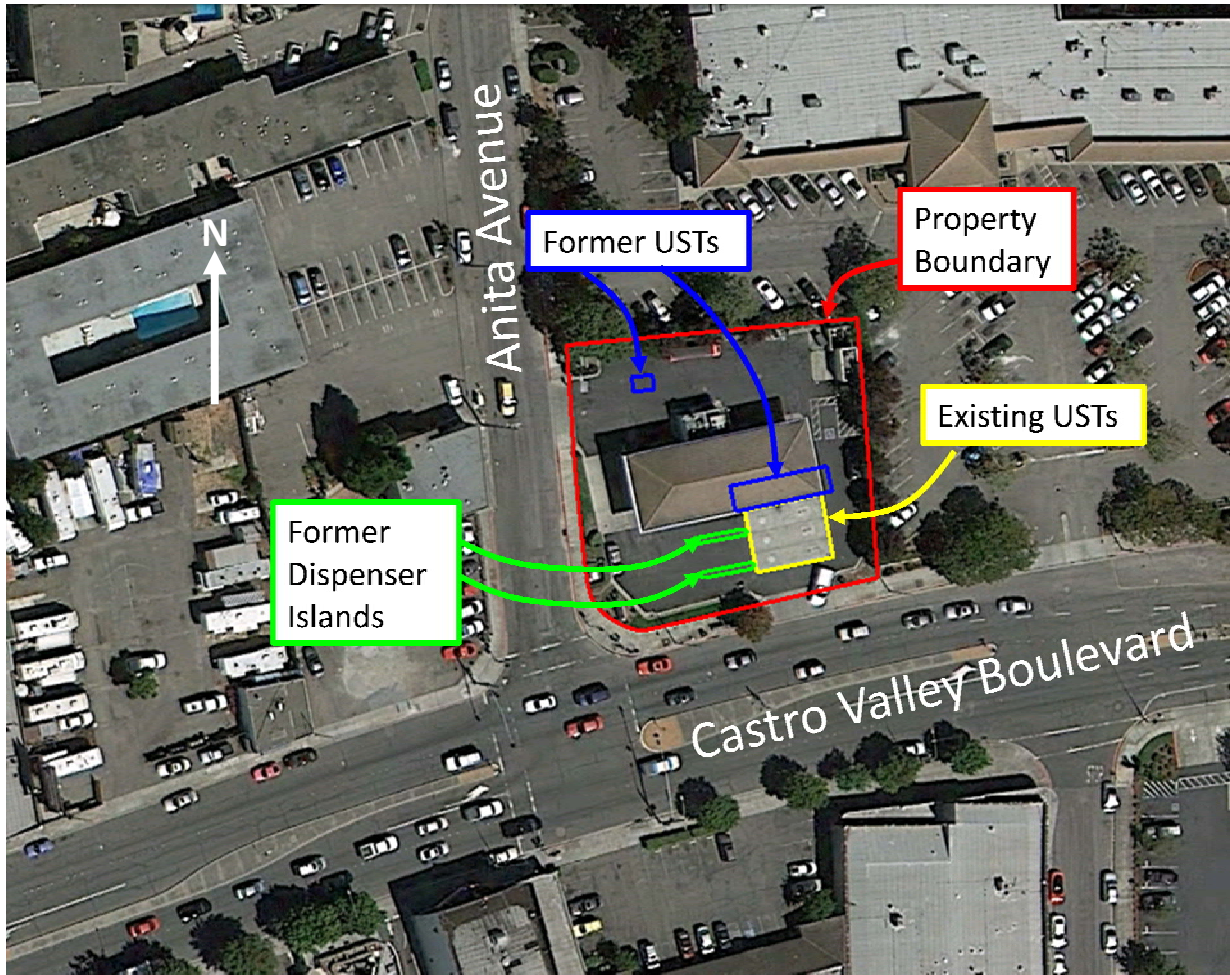


Figure 1: Aerial View of Property (Google Earth, 2013)