

Ro-473
copy

2880 Bishop Drive Suite 203
San Ramon, CA 94583
Ph (925) 244-6600
Fax (925) 244-6601



Fax

To: Eva Chu / ACDEH **From:** Roger Papler

Fax: (510) 337-9335 **Pages:** 2 (including cover sheet)

Phone: (510) 567-6762 **Date:** 26 August 2003

Re: 2552: Workplan Addendum items **Site:** 15101 Freedom Ave.

Urgent For Review Please Comment Please Reply Please Recycle

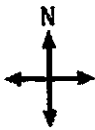
Included with this fax package is a copy of the revised borehole location map with the sixth temporary well borehole located almost mid-way between TWB-1 and TWB-4. The west side of Fairmont Drive has no parking slots and all lanes are active traffic lanes. Traffic disruption would be substantial on this major traffic artery. Given that the side-street location will be in a parking lane and that the proposed location is almost half way, SOMA strongly prefers this proposed location for TWB-6.



As per prior conversations, SOMA will incorporate the additional items required by ACDEH into the workplan:

- Minimum borehole depth: 40' bgs*
- Soil samples will be continuously collected from no lower than the capillary fringe (anticipated at approximately 25' bgs) to the bottom of the borehole of at least 40' bgs.*
- Selected soil samples will be submitted to a laboratory for chemical analysis
- Additional borehole - TWB-6 - has been added to the proposed boreholes for this investigation
- Based on data from the proposed off-site soil and gw investigation, SOMA will propose off-site monitoring well locations

*Given the ACDEH request for deeper boreholes, SOMA has subcontracted PSI (Richmond) who has the largest variety of DPT rigs in the Bay Area. PSI will provide the track mounted XD drilling rig - one of the most powerful yet compact - Geoprobe rigs available. It has been conveyed to SOMA that the general depth limitation of DPT rigs is approximately 50 feet. Because of the presence of very dense gravels in the site vicinity, however, the driller cannot guarantee drill rig penetration below 40-45'. The most ideal equipment has been selected for the safety constraints of this off-site work.

9/17/03 Roger Papler called. Drilling taking longer than thought, will not be able to do 6 proposed boreholes in 2 days. Rig only scheduled for 2 day. Discussed gwe TWB-2 last priority. Wait for analytical results to determine if TWB-2 should be completed



-  TEMPORARY WELL BOREHOLE
-  WATER SUPPLY WELL

approximate scale in feet
0 250

Figure 2: Site vicinity map showing proposed locations of offsite temporary well boreholes and approximate location of a water supply well.

