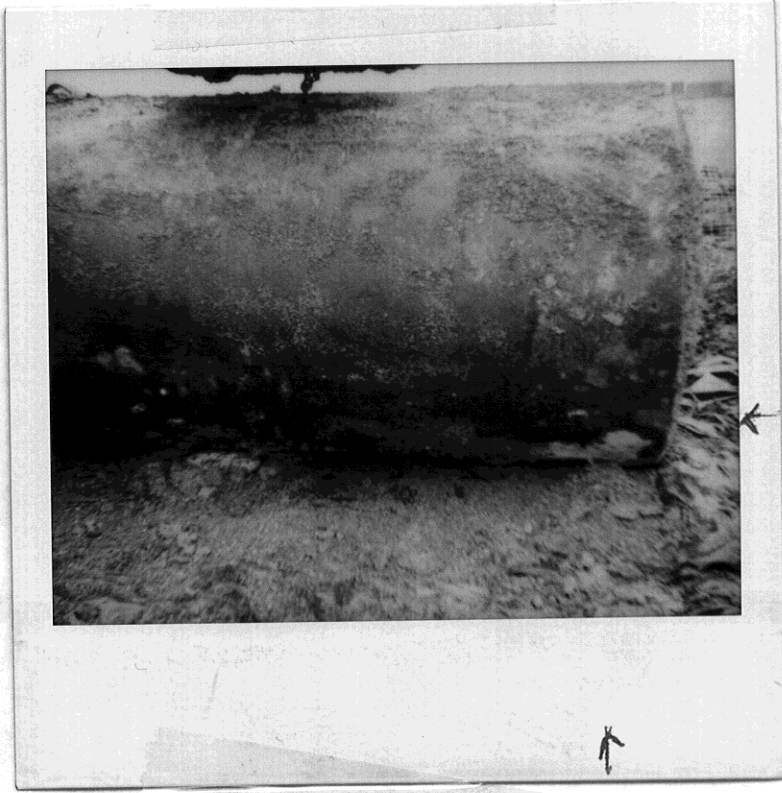
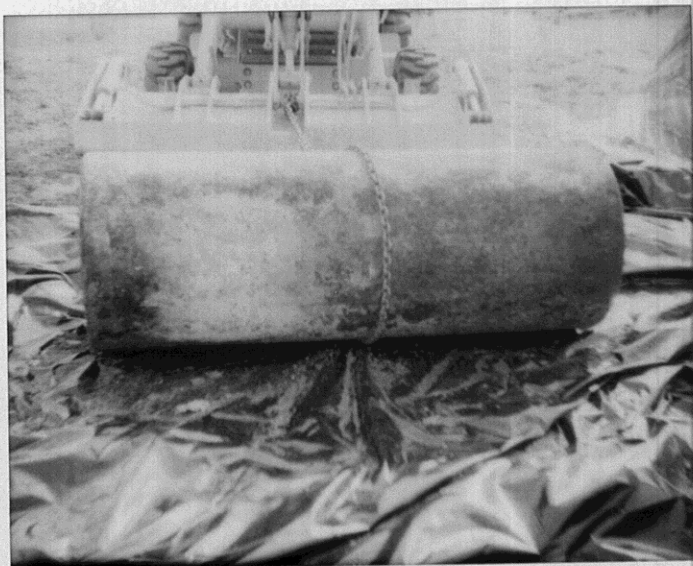
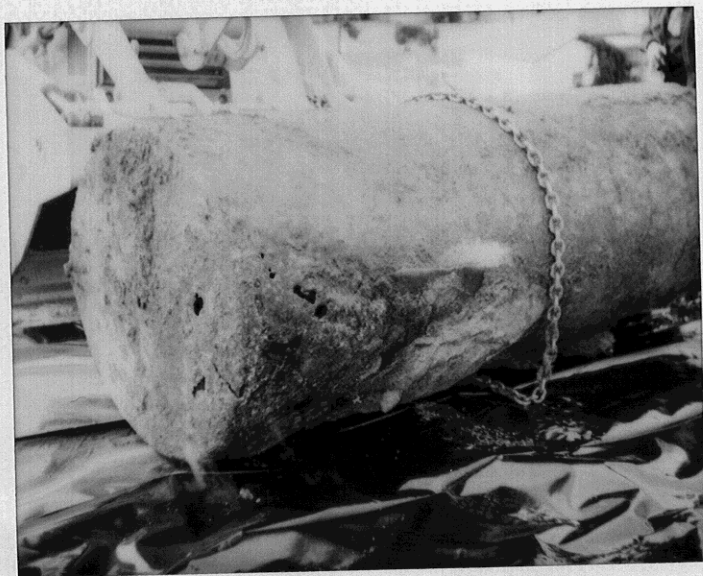


712196

12.14-94



11-4-94



↑

3/17/93



CAMP PARKS

3/17/93

JS

Pipeline Trench 732-A

Water in Trench, 50 L Samples

Taken From Right Side of Trench



CAMP PARKS

3/17/93

JS

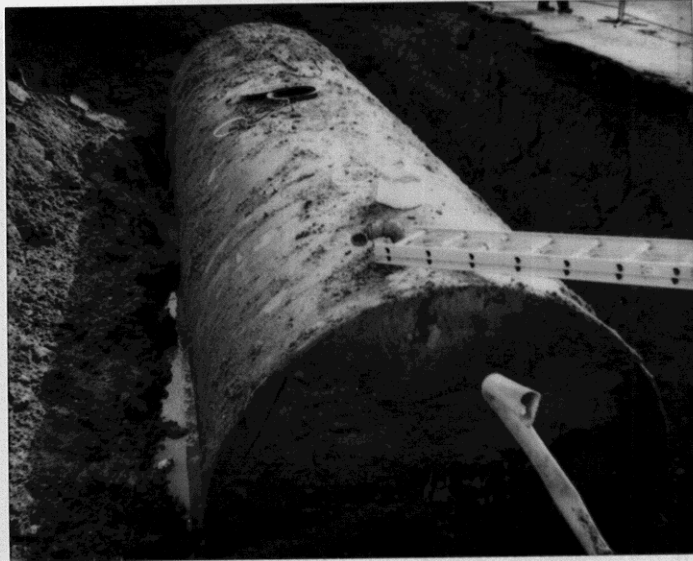
Pipeline Trench 732-B

Rain H<sub>2</sub>O in Some Areas of

Trench.



CAMP PARKS 1-550 Diesel 2/23/93  
Water in pit  
Jeff



CAMP PARKS 1-20K Gal. Diesel 2/23/93  
Water in pit  
Jeff



Open pit where 20K Gal ~~was~~ was  
removed. 2/23/93. Geo. H. D.  
Jeff S. CAMP PARKS

2/23/93

