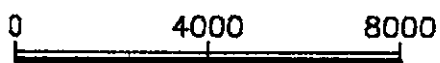


VICINITY MAP

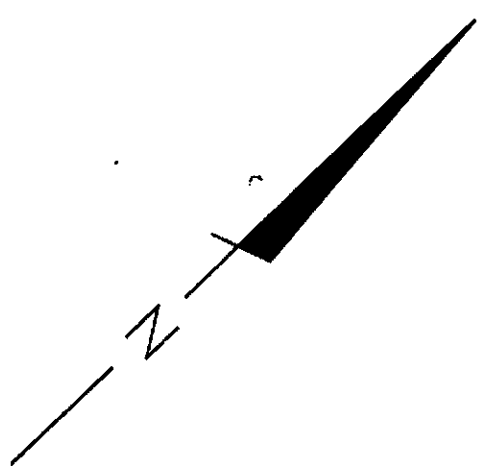


SCALE IN FEET
1" = 4000'

		SCALE: AS SHOWN
		DESIGNED BY: CEM
		DRAWN BY: JEB
		CHECKED BY: JPA
		DATE: 9/6/91
		APPROVED BY:
REVISIONS	BY	DATE:

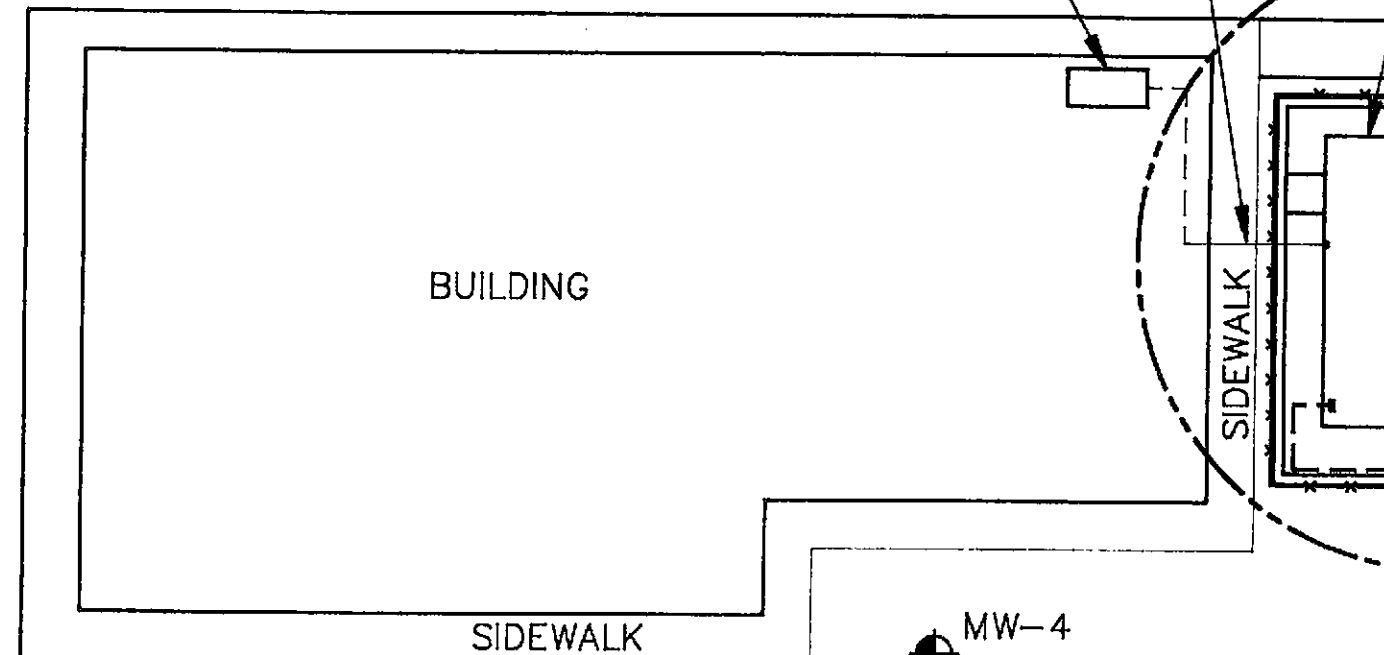


HLA
En
En
P.O.
Nov
(415)



OVERHEAD ELECTRICAL CONDUIT INTO BUILDING

EXISTING ELECTRICAL PANEL



BUILDING

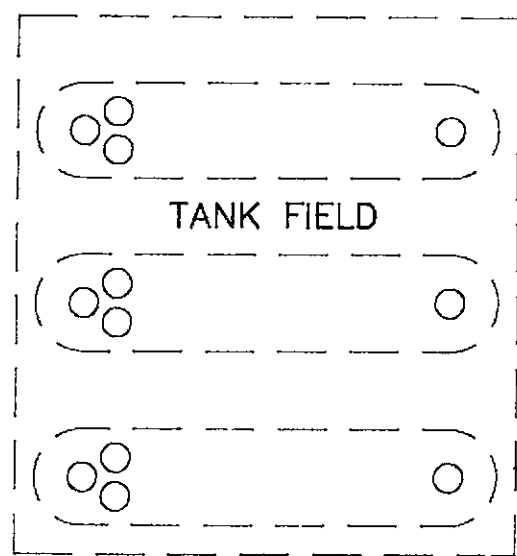
SIDEWALK

GARBAGE BIN

AIR/WATER

SIDEWALK

MW-4



TANK FIELD

MW-7

PLANTER

MW-6

PUMP ISLANDS

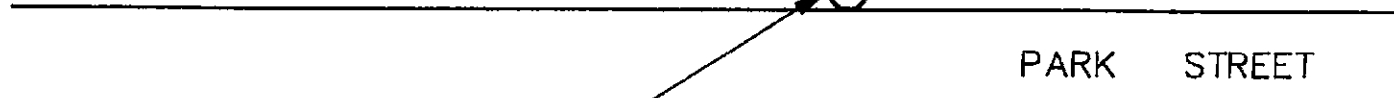
MW-3

PYLONS

EW-5

PLANTER

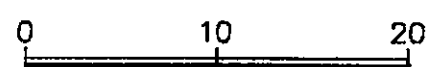
CURB



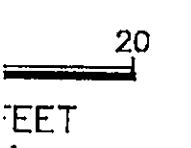
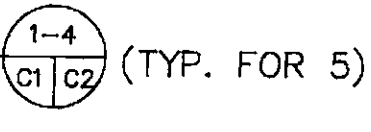
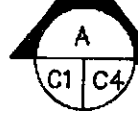
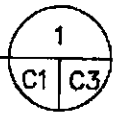
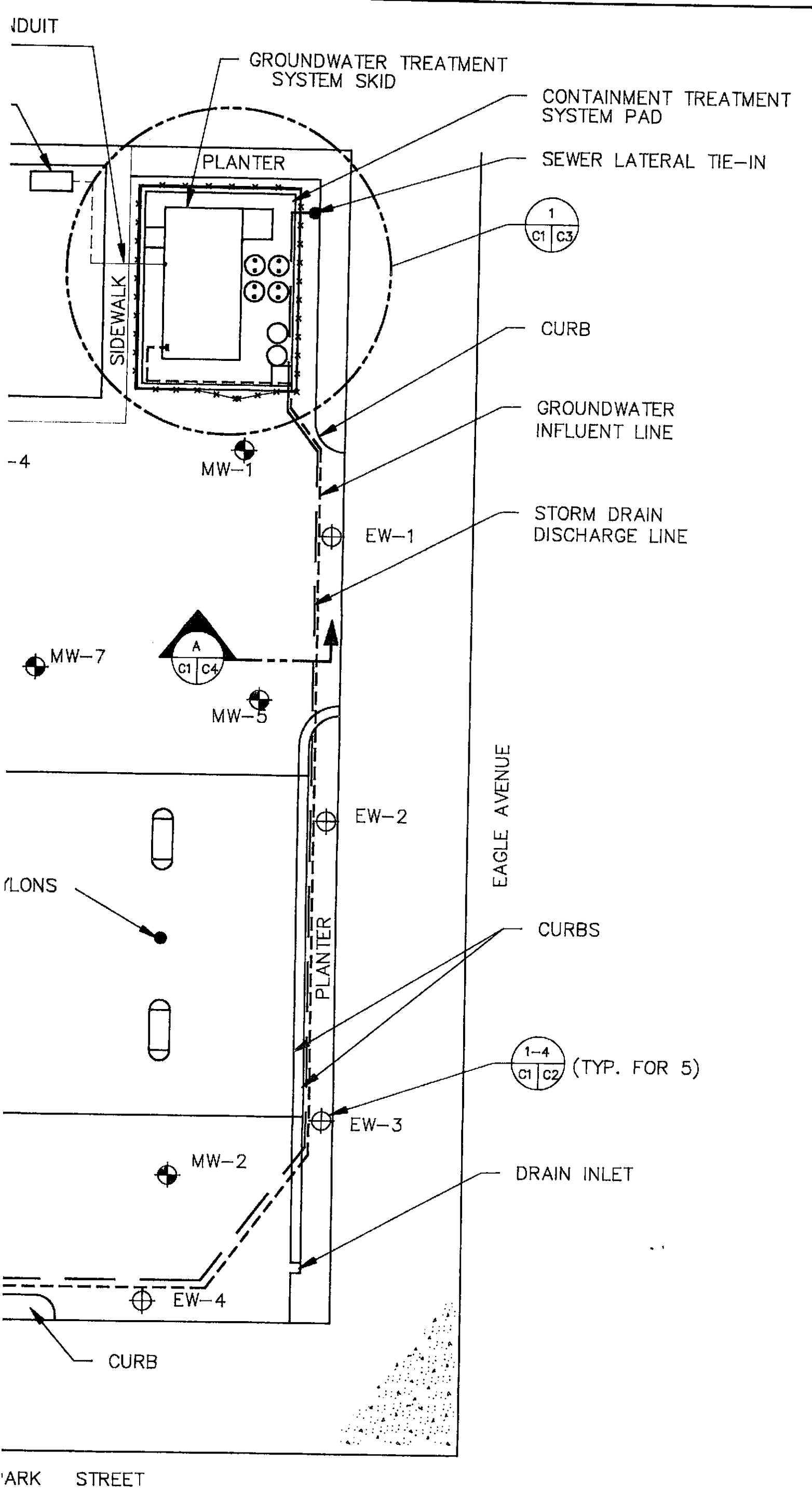
STORM DRAIN INLET

PARK STREET

SITE PLAN



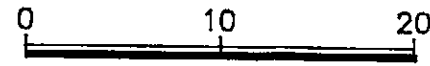
SCALE IN FEET



STORM DRAIN INLET

PARK STREET

SITE PLAN



SCALE IN FEET
1" = 10'

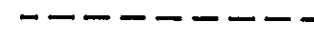
LEGEND



MONITORING WELL



EXTRACTION WELL



GROUNDWATER COLLECTION LINE



GROUNDWATER DISCHARGE LINE

ON STATION #7-0104

GROUNDWATER RECOVERY SYSTEM

JOB NO.:

04167,390.02

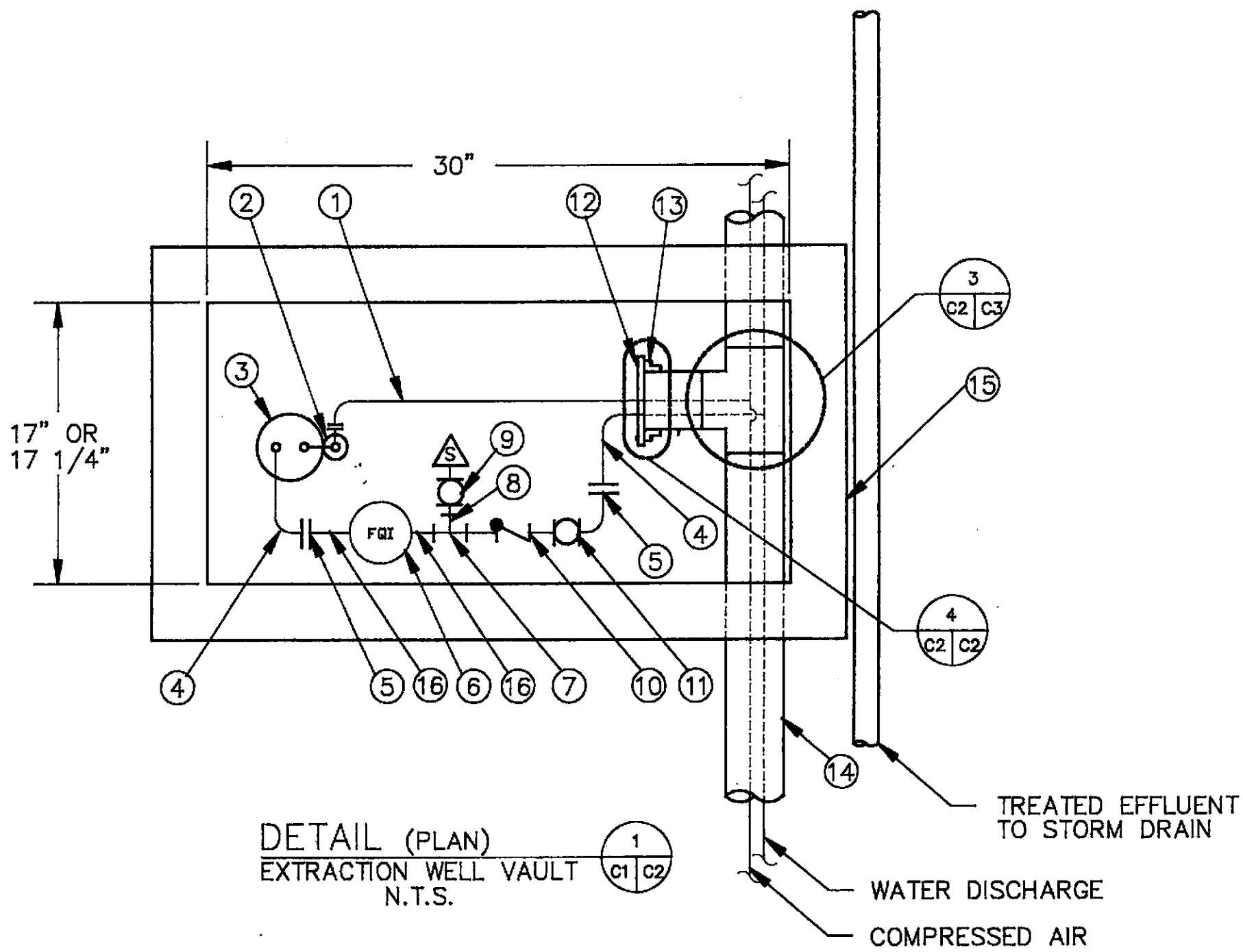
PARK STREET
EDA,CALIFORNIA

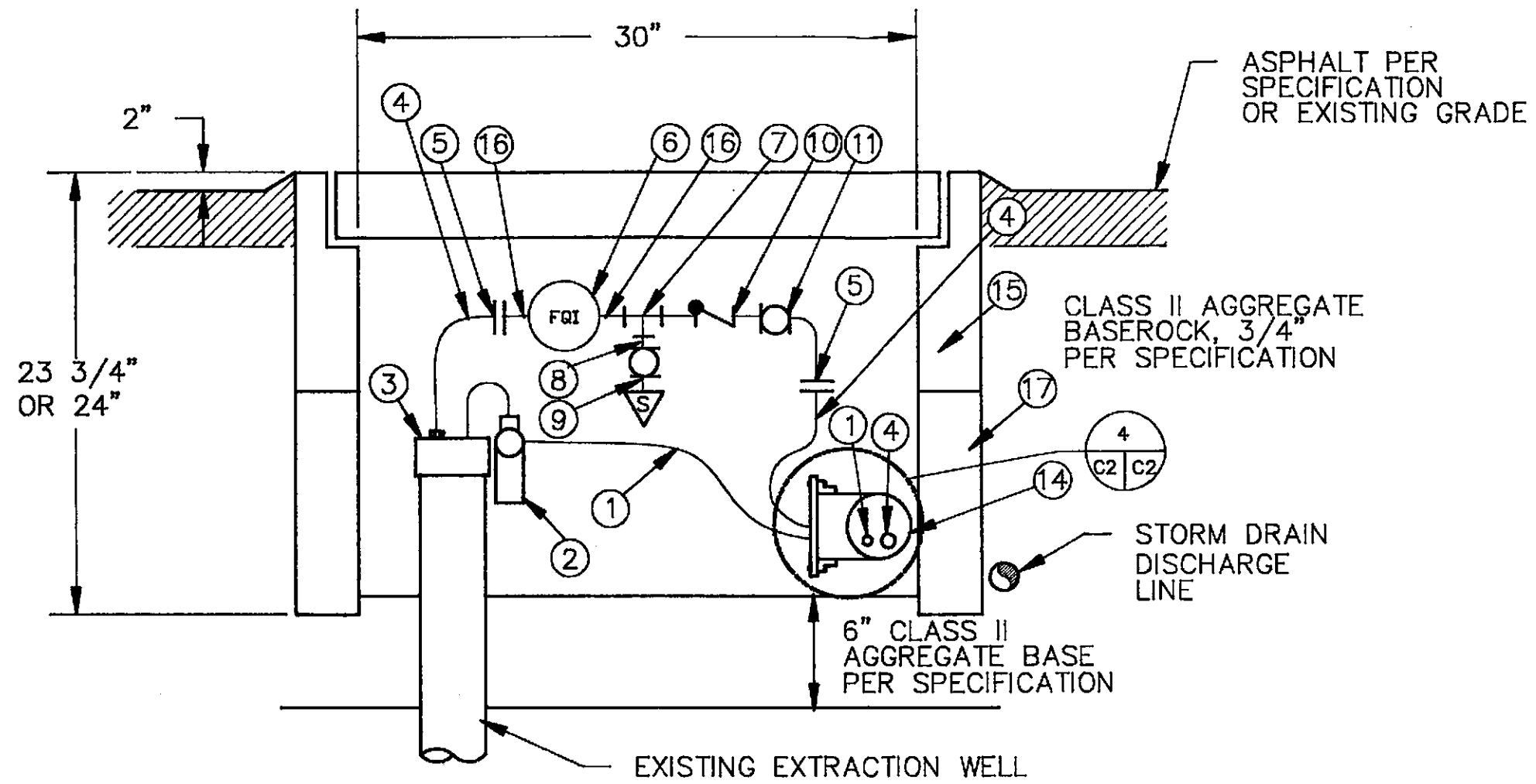
VICINITY MAP & SITE PLAN

DRAWING NO.:

C1

REV.:





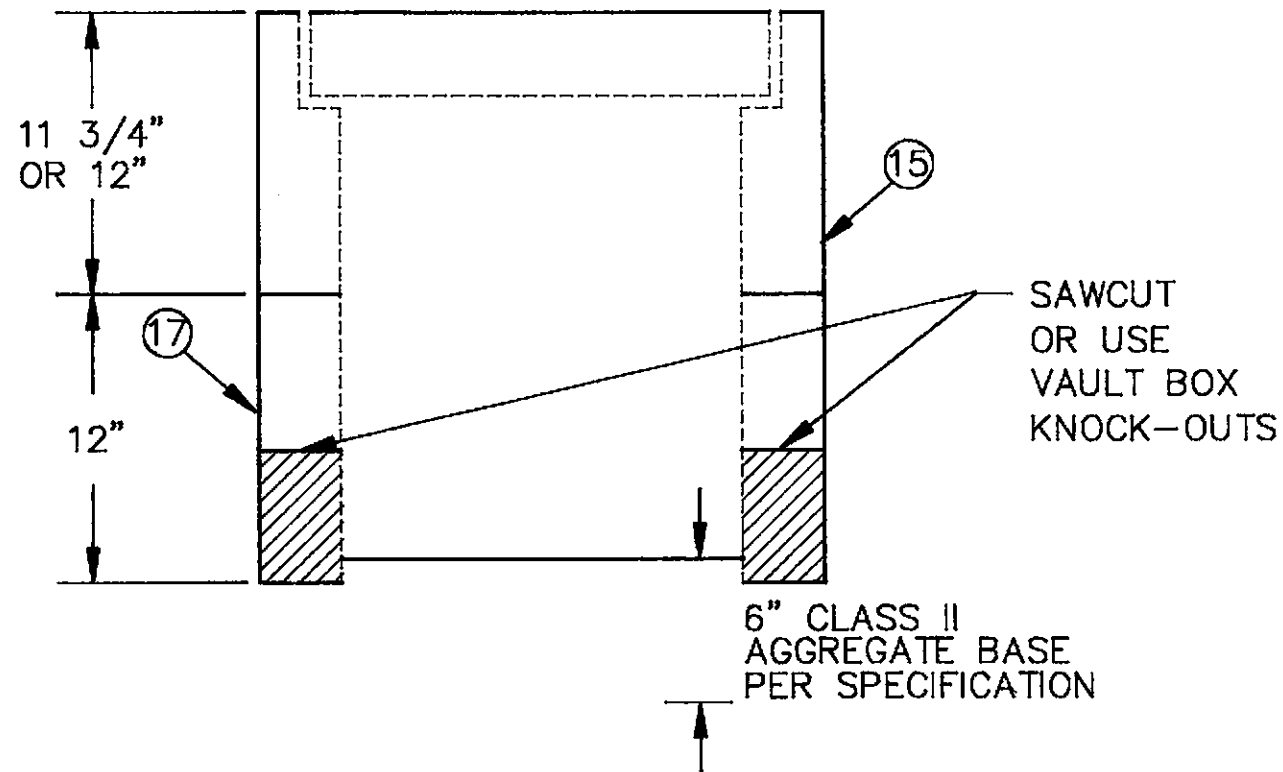
DETAIL (ELEVATION) 2
 EXTRACTION WELL VAULT C1|C2
 N.T.S.

BILL OF MATERIALS:

- ① 1/2" I.D. PRIMO-FLEX NYLON TUBING, 200 PSI RATING
- ② QED "SOLO" AIR FILTER/REGULATOR, SUPPLIED BY OWNER
- ③ QED "SOLO" WELL CAP, SUPPLIED BY OWNER
- ④ 3/4" I.D. PRIMO-FLEX NYLON TUBING, 200 PSI RATING
- ⑤ 3/4" X 3/4" PVC SOCKET X HOSE BARB ADAPTER
- ⑥ FLOW TOTALIZER, KENT C-700 5/8" X 3/4" OR EQUIVALENT, 0.25 GPM MINIMUM MEASURABLE FLOW RATE
- ⑦ 3/4" X 3/4" X 1/2" (ALL SOCKET) PVC REDUCING TEE AND 1/2" X 1/4" SOCKET X SOCKET PVC REDUCING BUSHING
- ⑧ 1/4" SCH. 80 PVC PIPE
- ⑨ 1/4" PVC FPT ADAPTER AND 1/4" PVC MPT X HOSE BARB LABCOCK VALVE
- ⑩ 3/4" PVC BALL CHECK VALVE WITH UNION CONNECTORS
- ⑪ 3/4" PVC TRUE UNION BALL VALVE
- ⑫ 4" PVC SCH. 80 BLIND FLANGE
- ⑬ 4" PVC SCH. 80 SOCKET FLANGE
- ⑭ 4" SCH. 80 PVC PIPE
- ⑮ 17" X 30" X 12" VAULT BOX (CHRISTY N17" X 30" BOX H/20 LOADING, SCREW DOWN COVER, OR EQUIVALENT FOR WELLS EW-1 AND EW-4; CHRISTY N36 ELECTRICAL BOX, FIBERLYTE LID W/HOLD DOWN BOLTS OR EQUIVALENT FOR WELLS EW-2, EW-3, AND EW-5.)
- ⑯ 3/4" SCH. 80 PVC PIPE
- ⑰ 17" X 30" X 12" EXTENSION BOX (CHRISTY N17" X 30" BOX H/20 LOADING OR EQUIVALENT FOR WELLS EW-1 AND EW-4; CHRISTY N36 12" EXTENSION OR EQUIVALENT FOR WELLS EW-2, EW-3, AND EW-5.)

NOTES:

1. APPLY TEFLON TAPE TO ALL THREADED CONNECTIONS.
2. ALL CLAMPS SHALL BE RATED AT 200 PSI.
3. PLACE TOP OF VAULT BOX 1/2" ABOVE EXISTING ASPHALT GRADE.



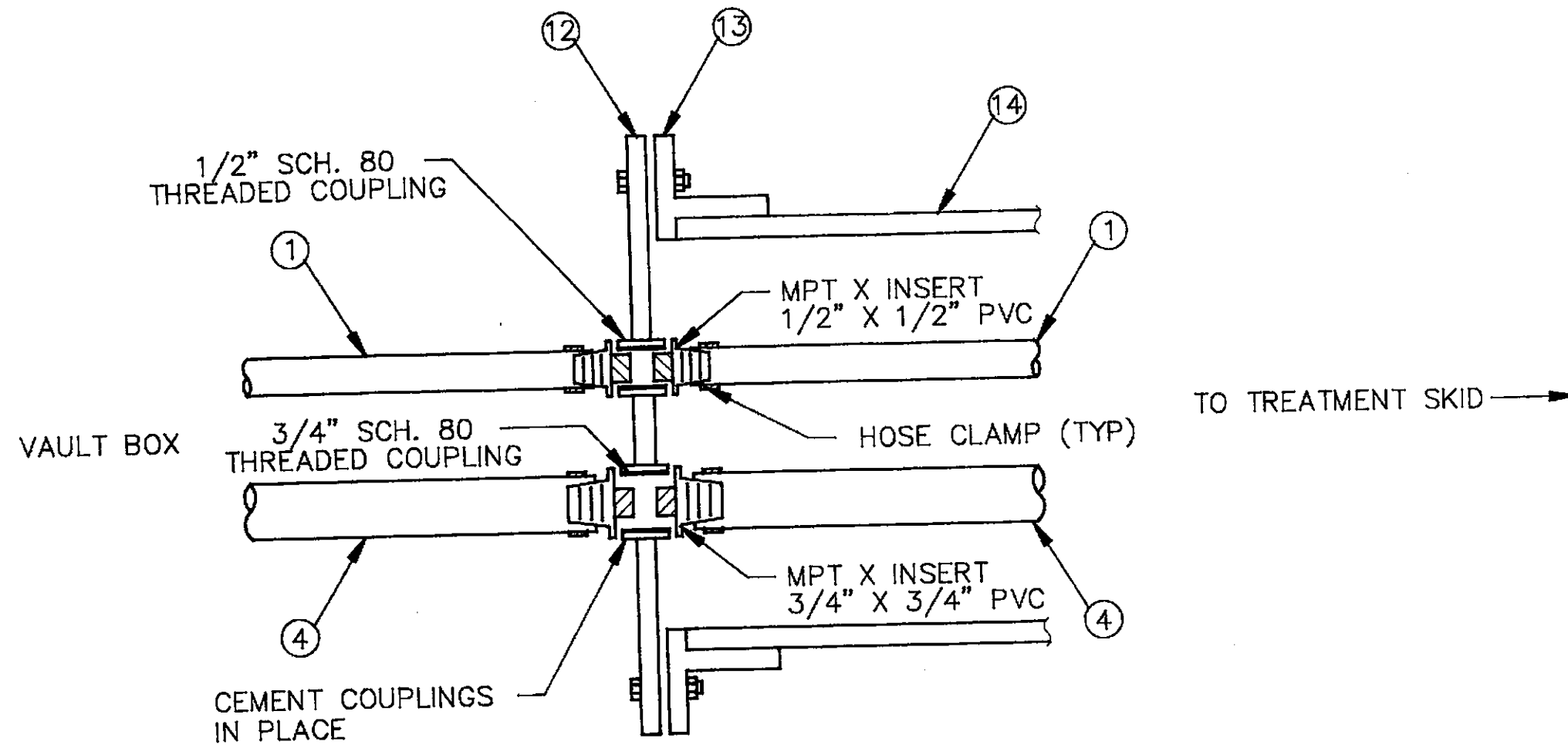
DETAIL (ELEVATION) 3
 EXTRACTION WELL VAULT C1 | C2
 N.T.S.

\04167\380\C2.DWG 08-05-81 GMD\23\08\LA140

				SCALE: AS SHOWN
				DESIGNED BY: CEM
				DRAWN BY: JEB
				CHECKED BY: <i>DPA</i>
				DATE: 9/6/91
				APPROVED BY:
				DATE:
NO.	DATE	REVISIONS	BY	



Harding
 Engineering
 Environmental
 P.O. Box 578
 Novato, Calif
 (415) 892-0821

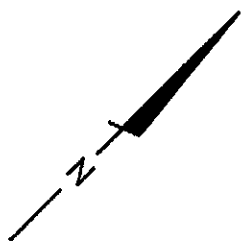


DETAIL
 VAULT BOX DOUBLE CONTAINMENT
 TERMINATION (TYP.)
 N.T.S.

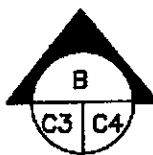
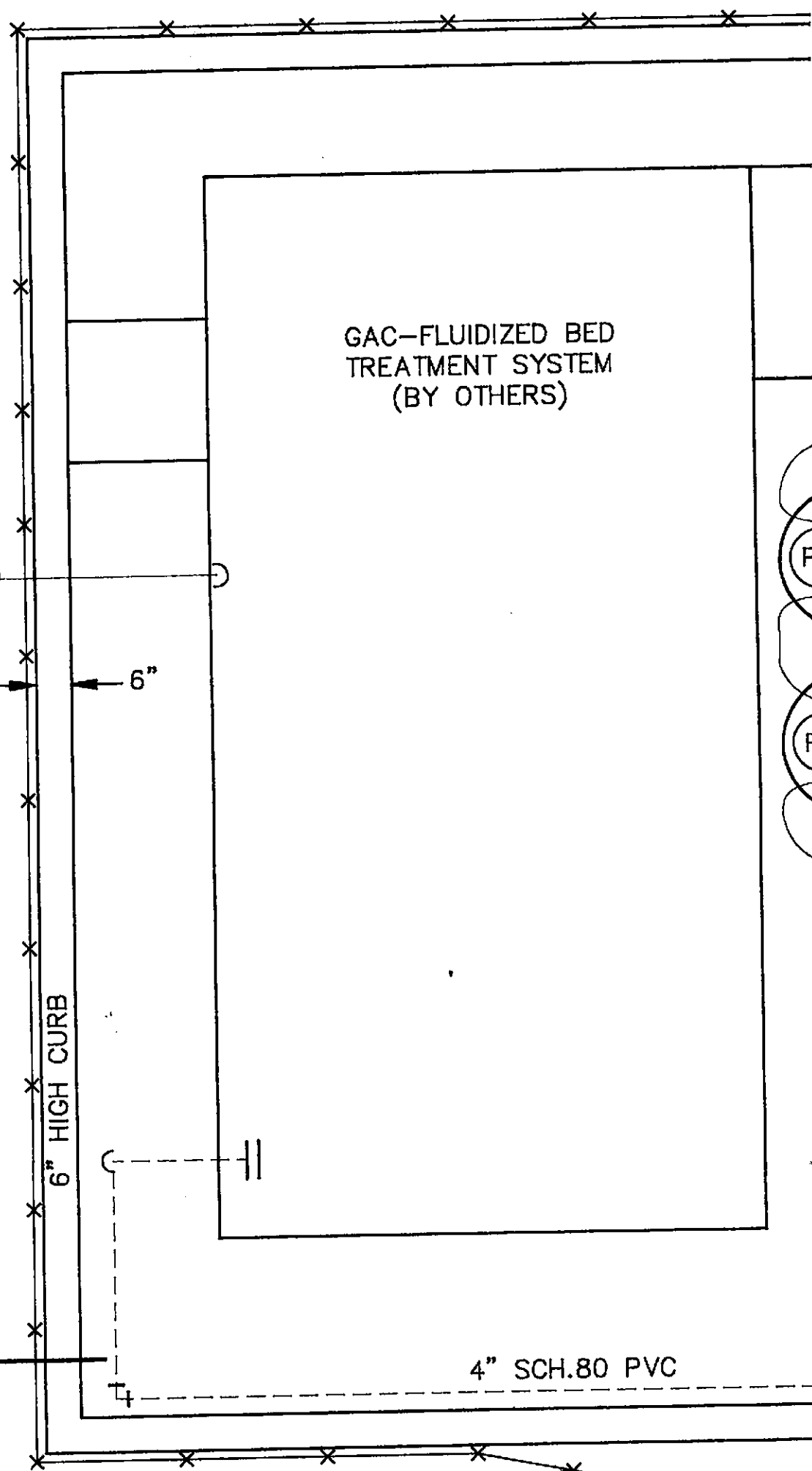
Harding Lawson Associates
 Engineering and
 Environmental Services
 P.O. Box 578
 Novato, California
 (415) 892-0821

EXXON STATION #7-0104
 1725 PARK STREET
 ALAMEDA, CALIFORNIA

GROUNDWATER RECOVERY SYSTEM
 EXTRACTION WELL VAULT DETAILS



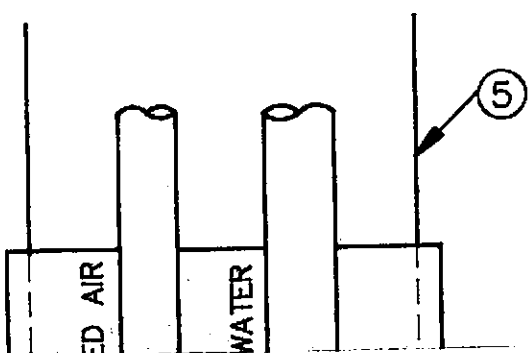
OVERHEAD
ELECTRICAL
CONDUIT
TO BUILDING



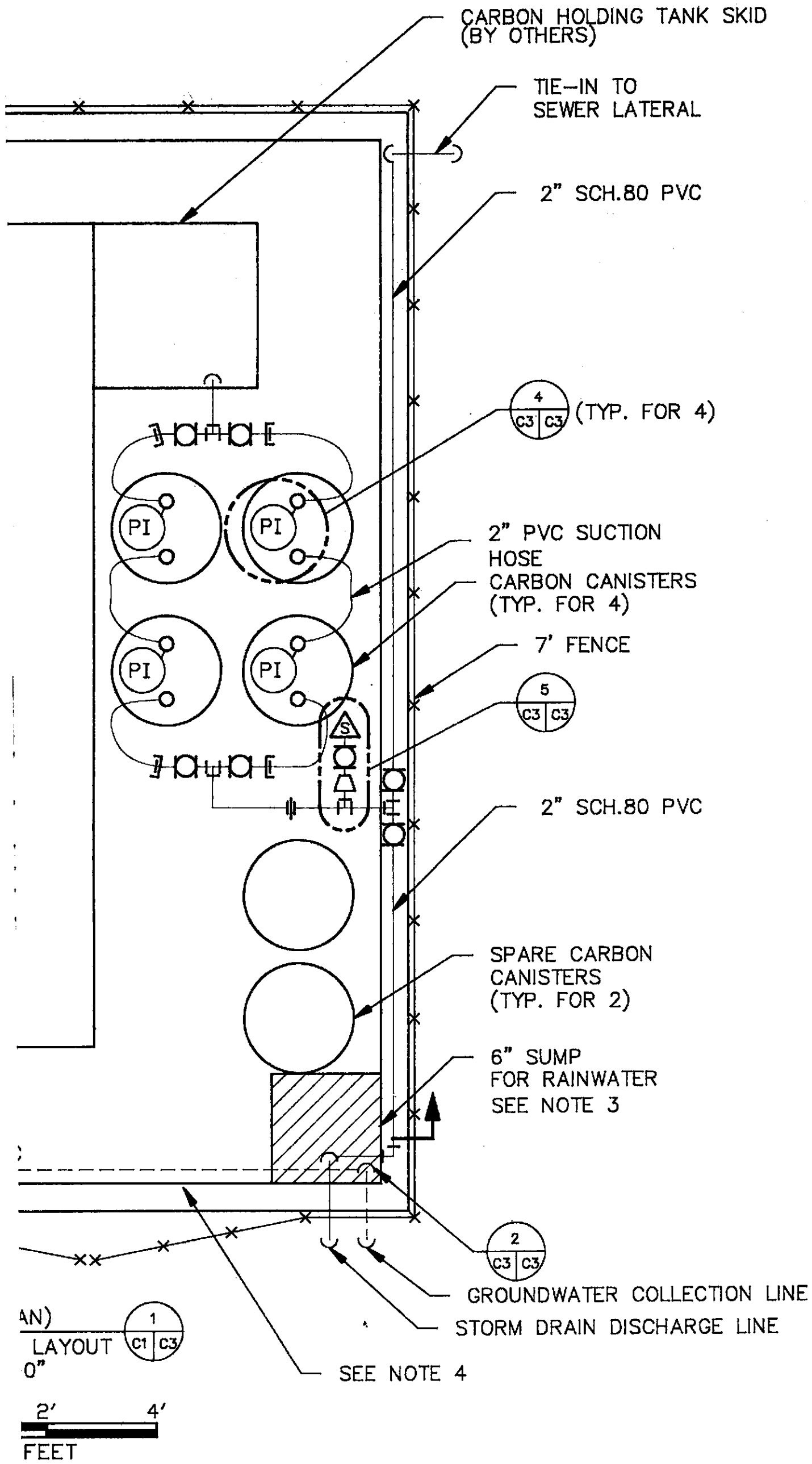
4" SCH.80 PVC

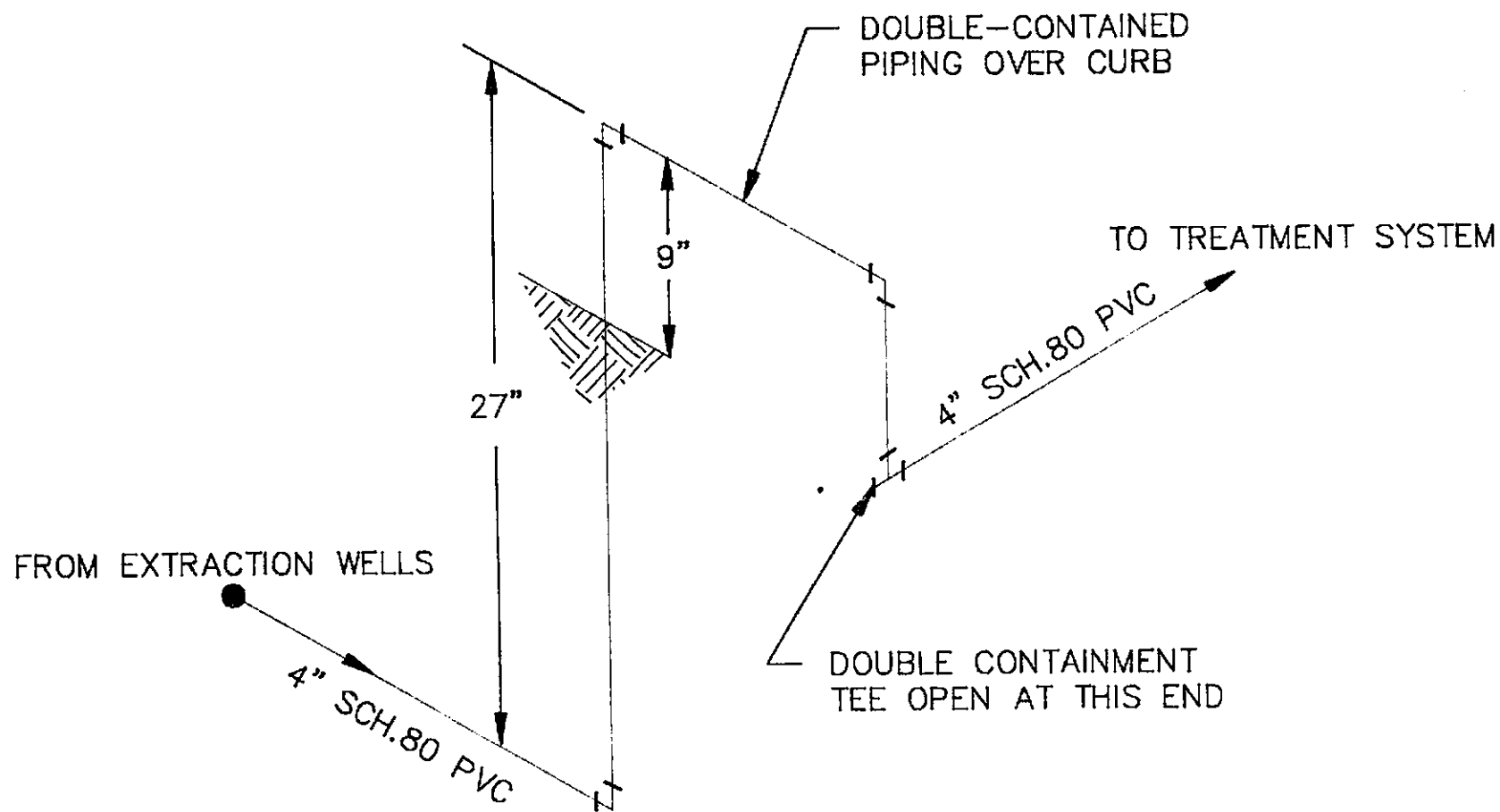
8' GATE

DETAIL (PLAN)
TREATMENT SYSTEM LAYOUT
SCALE: 1/2" = 1'-0"



5





DETAIL (ISOMETRIC) 2
 DOUBLE-CONTAINED PIPING OVER CURB
 N.T.S. C3 C3

BILL OF MATERIALS:

- ① 1" I.D. PRIMO-FLEX NYLON TUBING, 200 PSI RATING
- ② 3/4" I.D. PRIMO-FLEX NYLON TUBING, 200 PSI RATING
- ③ 3/4" I.D. PRIMO-FLEX NYLON TUBING, 200 PSI RATING
- ④ 1/2" I.D. PRIMO-FLEX NYLON TUBING, 200 PSI RATING
- ⑤ 4" SCH. 80 PVC PIPE
- ⑥ 4" X 4" X 4" PVC TEE, 2-PIECE, "FLO-SAFE" OR APPROVED EQUIVALENT
- ⑦ 3/4" X 3/4" X 1/2" (ALL HOSE BARB) PVC REDUCING TEE
- ⑧ 1" X 1" X 3/4" (ALL HOSE BARB) PVC REDUCING TEE
- ⑨ HOSE CLAMP, 200 PSI RATED
- ⑩ 2" PVC SUCTION HOSE, HEAVY DUTY, GREEN
- ⑪ QUICK-CONNECT COUPLING AND FITTINGS
- ⑫ 2" SCH. 80 PVC PIPE
- ⑬ 2" X 2" X 1/2" SCH.80 PVC REDUCING TEE
- ⑭ PRESSURE INDICATOR, 0 - 20 PSI RANGE
- ⑮ 1/2" X 1/2" X 1/4" SCH.80 PVC REDUCING TEE
- ⑯ 1/4" PVC FPT ADAPTER AND 1/4" PVC MPT X HOSE BARB LABCOCK VALVE
- ⑰ 1/2" X 1/4" SCH. 80 PVC REDUCER BUSHING.

NOTES:

- 1. APPLY TEFLON TAPE TO ALL THREADED CONNECTIONS.
- 2. ALL CLAMPS SHALL BE RATED AT 200 PSI.
- 3. PROVIDE DRAIN LINE FROM BOTTOM OF SUMP TO PLANTER AREA OUTSIDE OF CURB WITH BALL VALVE ON SUMP SIDE.
- 4. PROVIDE SET OF TWO REMOVABLE STEEL RAMPS, EACH 4' X 2' X 1/4" CHECKER PLATE OVER 4" PVC PIPE AT GATE. RAMP ASPHALT TO TOP OF CURB OUTSIDE OF COMPOUND IN FRONT OF 8' GATE.

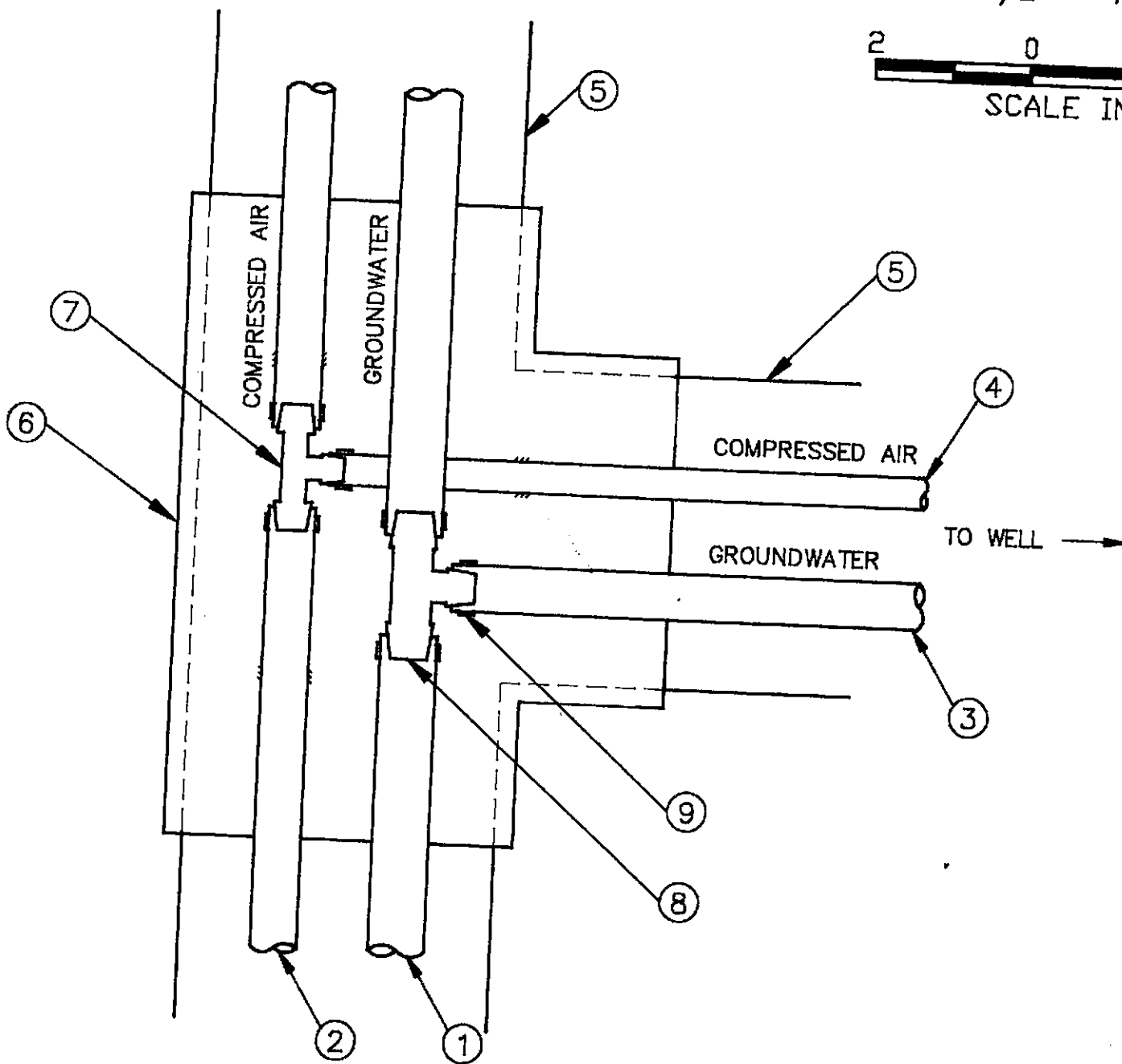
8' GATE

DETAIL (PLAN)

TREATMENT SYSTEM LAYOUT
SCALE: 1/2" = 1'-0"

1
C1 | C3

2 0 2' 4'
SCALE IN FEET



DETAIL (TYP. FOR 5)
EXTRACTION WELL TRENCH
PIPING TIE-IN
N.T.S.

3
C1 | C3

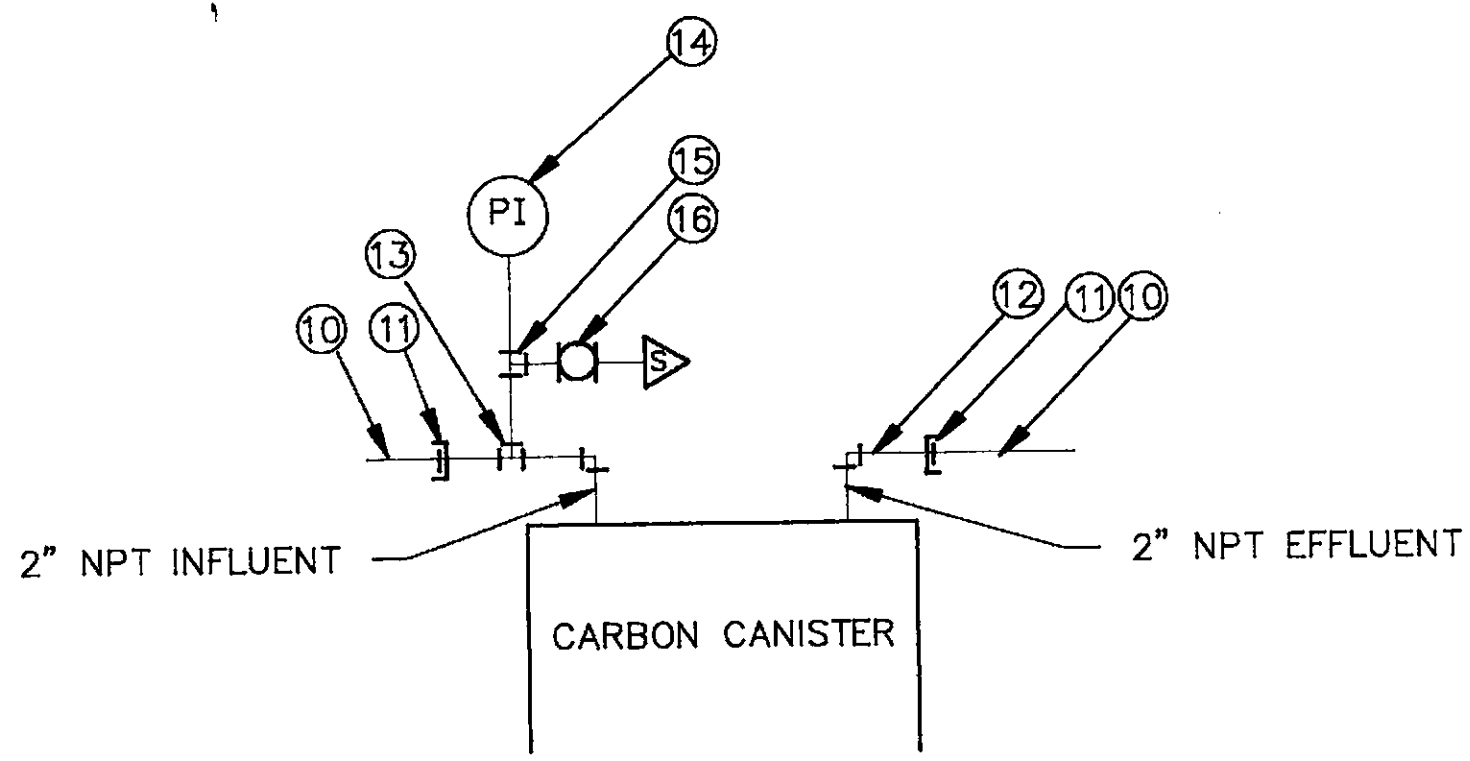
SCALE: AS SHOWN
DESIGNED BY: CEM
DRAWN BY: JEB
CHECKED BY: JEB
DATE: 9/6/91
APPROVED BY:
DATE:



REVISIONS

BY

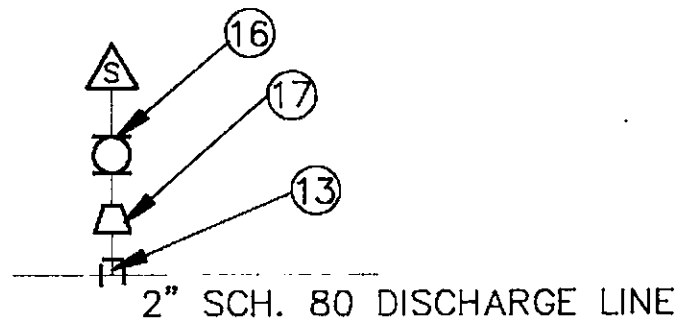
E



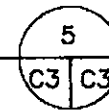
DETAIL (TYP. FOR 4) 4
 CARBON CANISTER CONNECTIONS C3 | C3
 N.T.S.

Harding Lawson Associates
 Engineering and
 Environmental Services
 P.O. Box 578
 Novato, California
 (415) 892-0821

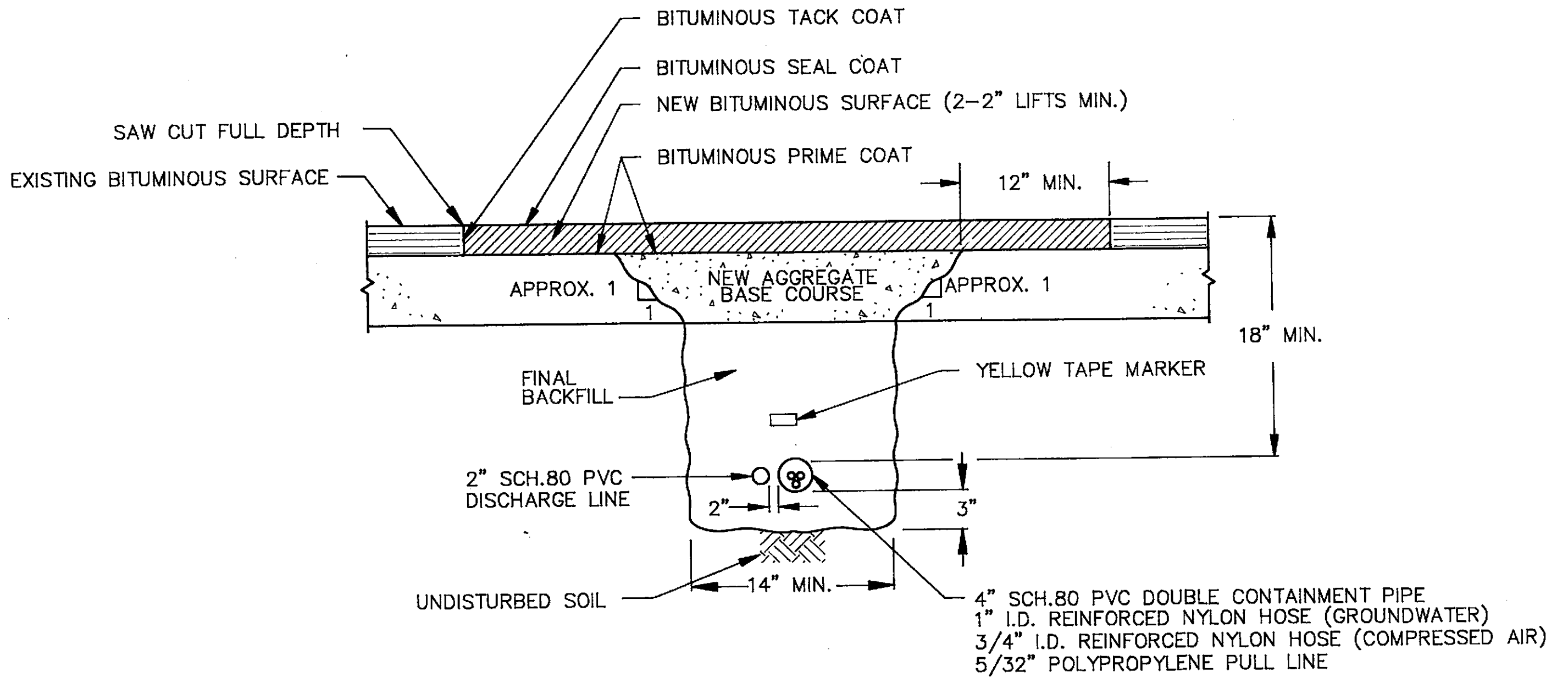
EXXON STATION #7-0104
 1725 PARK STREET
 ALAMEDA, CALIFORNIA



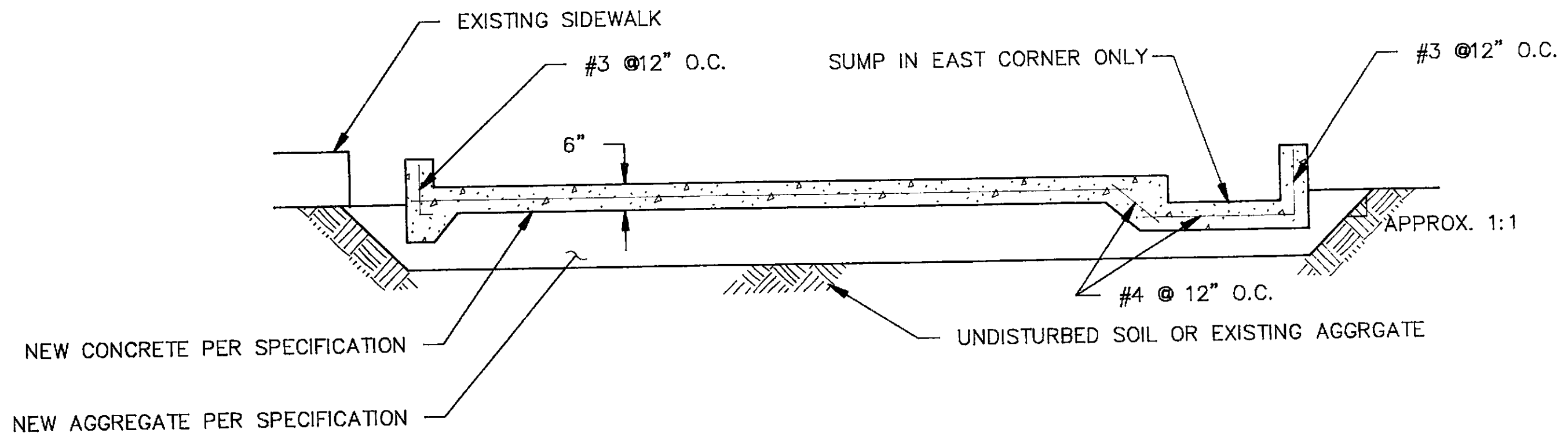
DETAIL
DISCHARGE SAMPLE PORT
N.T.S.



<p>GROUNDWATER RECOVERY SYSTEM</p> <p>TREATMENT SYSTEM LAYOUT DETAILS</p>	<p>JOB NO.:</p> <p style="text-align: center;">04167,390.02</p>	
	<p>DRAWING NO.:</p> <p style="text-align: center;">C3</p>	<p>REV.:</p>



SECTION A
 TRENCH SECTION AND ASPHALT PAVEMENT REPAIR
 N.T.S. C1 | C4



SECTION
 TREATMENT SYSTEM PAD
 SCALE: 1/2" = 1'-0"

B
C3 C4

SCALE IN FEET

\\D:\167\390\C4.DWG 05-05-91

				SCALE: AS SHOWN
				DESIGNED BY: CEM
				DRAWN BY: JEB
				CHECKED BY: <i>DPK</i>
				DATE: 9/6/91
				APPROVED BY:
				DATE:
NO.	DATE	REVISIONS	BY	



Harding Lawson Associates
Engineering and
Environmental Services

P.O. Box 578
Novato, California
(415) 892-0821

EXXON STATION #7-0104

1725 PARK STREET
ALAMEDA, CALIFORNIA

GROUNDWATER RECOVERY SYSTEM

SECTIONS

JOB NO.:

04167,390.02

DRAWING NO.:

C4